

# SETTING UP

Thank you for your purchase.

Your computer includes the following items:

- **Remote control** (may look different than the one shown)
- **Batteries** (for the wireless remote control)
- **Infrared (IR) blaster cable**—Sends input to a set-top box to change channels
- **Infrared (IR) receiver cable**—Sends input from the remote control to your computer
- **FM antenna**—Receives FM radio signals (optional)

Remove your computer components from the packaging and lay them out for easy access during the setup process.



Remote control and batteries



Infrared (IR) blaster cable



Infrared (IR) receiver cable



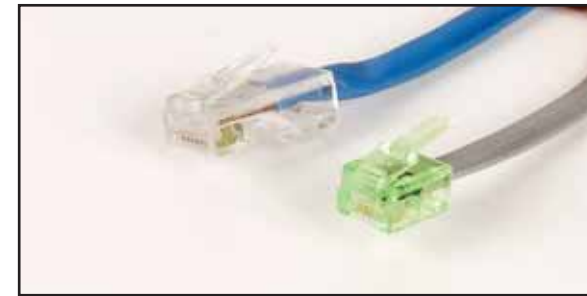
FM antenna

## PLANNING YOUR COMPUTER SETUP

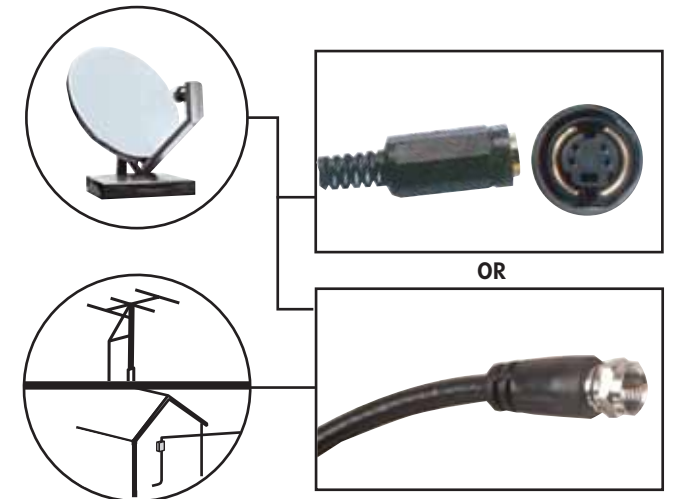
Before you start connecting computer components, take a few minutes to make sure that all of these connections are available in the location you have selected for your computer.

- **Power outlet**

- **Internet connection**



- **Video source**



# SETTING UP YOUR MEDIA CENTER HARDWARE

## SETTING UP MEDIA CENTER HARDWARE

### Install remote control batteries

Insert two AA batteries into the remote control, matching the + and – on the batteries with the + and – inside the battery compartment.



### Connect the IR receiver cable (optional)\*

NOTE: If the front of your computer is not visible when you use the remote control, position the head of the IR receiver cable so that it is visible.

Plug the IR receiver cable into the IR receiver jack on the back of your computer.

NOTE: When the IR receiver cable is connected, it acts as the infrared sensor for the remote control and the infrared sensor on the front of the computer is disabled.



\*necessary only if you want to use the Media Center remote control to control your set-top box

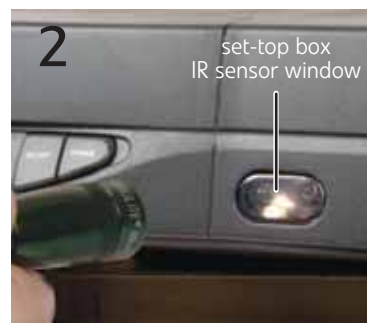
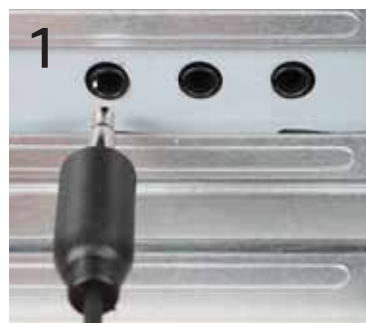
### Connect the IR blaster cable

If your Media Center configuration uses a set-top box for the video source, connect the IR blaster cable to one of the two IR blaster jacks on the back of your computer and to the set-top box IR sensor window. The IR blaster cable sends input to your set-top box to change channels.

- 1 Plug the IR blaster cable into one of the two IR blaster jacks on the back of your computer.
  - 2 Refer to the manual that came with your set-top box to determine the location of its IR sensor.
- OR -

Locate the IR sensor on the set-top box by shining a flashlight through the set-top box IR sensor window. Look for a 1/2- to 3/8-inch metallic rectangle with a 1/8-inch dark circle in the middle. This is the IR sensor.

- 3 Remove the adhesive paper from the sensor head of the IR blaster cable, then place the sticky side on the set-top box sensor window.



NOTE: See your set-top box guide for more information about remote settings.

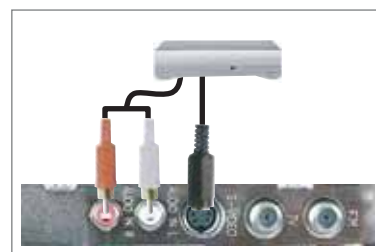
### Connect the video and audio source

**S-Video**—Provides acceptable video. If you use S-Video, you also need to connect the audio using RCA stereo cables.

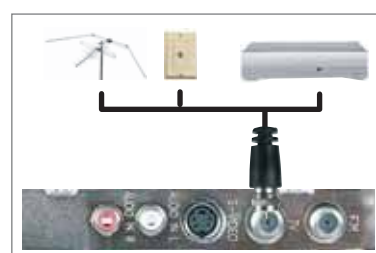
Connect an S-Video cable (not included) from a video device to the S-Video in jack on the back of your computer, then connect an RCA cable (not included) from the audio out jacks on the video device to the audio in RCA jacks on your computer.

**Coaxial (TV)**—Carries both video and audio signals. Use this to connect a direct cable or an antenna video source to your computer.

Connect a coaxial cable (not included) from a video device to the TV jack on your computer.



S-Video computer connection



Coaxial computer connection

## SETTING UP OPTIONAL COMPUTER CONNECTIONS

### Connecting a TV

You can use a TV as a display device. However, some older TVs provide a lower quality display than computer monitors or flat-panel TVs that are optimized for your computer.

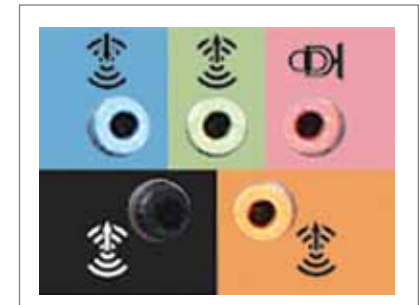
Your computer provides display outputs from a VGA (monitor) port or an S-Video port. Select the highest quality port that your TV supports:

VGA—Best. If your TV has a VGA port, use this.

S-Video—Good. Display quality is acceptable for TV images but not as good for Media Center functions.

For a better picture on a 4:3 aspect ratio (standard) TV, you may need to lower the computer screen resolution to 800 × 600 or 640 × 480.

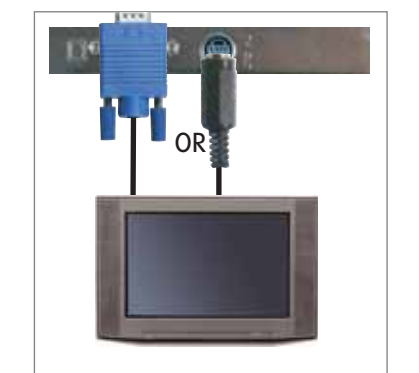
- 1 Connect a VGA cable (not included) or S-Video cable (not included) to the VGA port or S-Video out port on the back of your computer.
- 2 Connect the other end of the cable to the VGA port or S-Video port on the back of your TV.
- 3 Turn on your TV and select the TV In video source. For more information about selecting the TV In video source, see your TV's documentation.



Analog audio jacks  
(your computer's jacks may vary)



VGA/S-Video TV connection



VGA/S-Video computer connection

### Connecting the computer to an existing home stereo or home theater

Your computer includes audio jacks that support a 7.1 Surround Sound audio system. The sound system setup varies, depending on your sound system's audio inputs. Use your computer and sound system's setup posters and other documentation to connect your computer to the sound system.

## COMPLETING MEDIA CENTER SETUP

After your computer components are connected, you are ready to turn on the power and finish installing the software.

- 1 After you complete the initial Windows setup, click **(Start)** @ then **Media Center** on your computer, or press the **Start** button on the remote control to start the Media Center setup wizard.
- 2 Follow the setup screens to configure the Media Center software for your specific requirements.

## Free Manuals Download Website

<http://myh66.com>

<http://usermanuals.us>

<http://www.somanuals.com>

<http://www.4manuals.cc>

<http://www.manual-lib.com>

<http://www.404manual.com>

<http://www.luxmanual.com>

<http://aubethermostatmanual.com>

Golf course search by state

<http://golfingnear.com>

Email search by domain

<http://emailbydomain.com>

Auto manuals search

<http://auto.somanuals.com>

TV manuals search

<http://tv.somanuals.com>