

# MULTIMEDIA KEYBOARD AND OPTICAL MOUSE

**H098056**  
Rev. 2

## USER'S MANUAL



[www.jascoproducts.com](http://www.jascoproducts.com)

# TABLE OF CONTENTS

|   |           |
|---|-----------|
| <b>1. Introduction</b>                                  | <b>3</b>  |
| <b>2. Feature Description</b>                           | <b>3</b>  |
| <b>3. Package Contents</b>                              | <b>4</b>  |
| <b>4. System Requirements</b>                           | <b>4</b>  |
| <b>5. Hardware Installation Instructions</b>            | <b>5</b>  |
| <b>6. Software Installation Instructions</b>            | <b>6</b>  |
| <b>7. Keyboard Settings</b>                             | <b>8</b>  |
| <b>7-1. Programming Hot Keys</b>                        | <b>8</b>  |
| <b>7-2. Customize the Hot Key Display</b>               | <b>10</b> |
| <b>7-3. Scroll Lock, Num Lock &amp; Caps Lock icons</b> | <b>10</b> |
| <b>8. Mouse Settings</b>                                | <b>11</b> |
| <b>8-1. Scroll Wheel Settings</b>                       | <b>11</b> |
| <b>8-2. Button Programming</b>                          | <b>12</b> |
| <b>9. Software Un-Install Instructions</b>              | <b>13</b> |
| <b>10. Special Function Hot Keys</b>                    | <b>14</b> |
| <b>10-1. Description of Multimedia Key Zone</b>         | <b>14</b> |
| <b>10-2. Description of Internet Key Zone</b>           | <b>15</b> |
| <b>10-3. Description of Windows Key Zone</b>            | <b>16</b> |
| <b>11. Special Mouse Functions</b>                      | <b>17</b> |
| <b>12. Troubleshooting</b>                              | <b>18</b> |
| <b>13. 3 Year Limited Warranty</b>                      | <b>19</b> |
| <b>14. FCC Statement</b>                                | <b>20</b> |

**Thank you for purchasing the GE branded Multimedia Keyboard and Optical Mouse. This User's Manual contains all of the information needed to operate your keyboard and mouse. Please keep the enclosed CD in a safe place for future maintenance after installation.**

## **1. Introduction**

The Multimedia Keyboard and Optical Mouse are specially designed to optimize your efficiency. With 19 special one-touch keys, you can execute your favorite commands instantly from your desktop! The 5-button optical mouse allows easy scrolling in your applications, and forward and back Internet buttons that can be programmed to perform other common tasks. The detachable wrist rest and crisp keys ensure comfort. This solution is designed to maximize your total productivity! You can just plug in the Multimedia Keyboard and Optical Mouse and it is immediately ready to use, or install the software to empower the keyboard with more functions.

## **2. Feature Description**

- Optical mouse provides pinpoint precision on almost any surface.  
(The mouse may not work on glass, very dark or very glossy surfaces)
- Optical mouse stays clean and won't wear out.
- 7 hot keys for "Internet Zone".
- 7 hot keys for "Multimedia Zone".
- 4 hot keys for "Windows® Zone".
- Sleep mode to save power.
- Compatible with Windows® 95, NT, 98, ME, 2000, and XP.
- No driver or software required except for special application keys.
- Wrist Rest for added comfort.

### 3. Package Contents

- Multimedia Keyboard
- Optical 5-Button Mouse
- 2 USB to PS2 adapters
- Wrist Rest
- CD with Software
- User's Manual

### 4. System Requirements

- Pentium 133 MHz or higher processor
- Windows® 95 or later
- Microsoft® Office 95 or later
- Microsoft® Internet Explorer 4.0 or later; Netscape Navigator 4.73 or later; MSN Explorer and AOL.
- For Windows® 95, 98: 32 MB of RAM recommended
- For Windows® NT, 2000, ME, XP: 64 MB of RAM recommended
- 4MB of available hard disk space
- CD-ROM or DVD drive
- 2 PS/2 ports

**Note:**

1. "Sleep" hot key function is available if your system supports power management (ACPI) and has it enabled and all the peripherals (e.g. VGA, Sound card...) are compatible with power management.

## 5. Hardware Installation Instructions

The GE Multimedia keyboard and optical mouse can each be connected to either a USB or PS2 port. You may choose a different connection type for each. Please follow the instructions below for your preferred connection method.

### USB



1. Disconnect the existing keyboard and mouse from your computer.  
(Shut down your computer before disconnecting any PS2 device from your computer.  
You may restart your computer after the PS2 device is removed.)
2. Plug the USB plug of your keyboard into any USB port on your computer or hub.
3. Plug the USB plug of your mouse into any USB port on your computer or hub.

### PS2



1. **Shut down** and **turn off** your computer. Failure to do so could damage your computer.
2. Disconnect the existing keyboard and mouse from your computer.
3. Plug the USB plug of your keyboard into the USB port on the USB to PS2 adapter.
4. Plug the PS2 plug of the USB to PS2 adapter into the keyboard PS2 port on the back of your computer.  
(This port is usually purple with a small icon of a keyboard as a label.)
5. Plug the USB plug of your mouse into the USB port on the USB to PS2 adapter.
6. Plug the PS2 plug of the USB to PS2 adapter into the mouse PS2 port on the back of your computer.  
(This port is usually green with a small icon of a mouse as a label.)
7. Turn on your computer and start your Operating System.

## 6. Software Installation Instructions



It is not necessary to load the software in order to use the standard functions of your keyboard or mouse. The software is only required to use the hot keys and to program the keyboard and/or mouse buttons.

Please read all instructions before you begin. If you are not confident in your ability to load the enclosed software, please contact a computer technician in your area. It is always a good idea to back up your system before adding any new software to your computer.




1. Close all open applications before beginning.
2. Uninstall any previously installed third-party keyboard or mouse software from your computer by going to “**Add/Remove Programs**” in the **Control Panel**. **Control Panel** is located in the **Start Menu**. (In some operating systems Control Panel is located under “Settings” in the Start Menu.)

**DO NOT remove the standard Microsoft drivers!!**

3. Insert the included CD into your CD-ROM drive. It should auto run.  
If the CD does not run automatically, you have two options.
  - a) Click on **My Computer** located on the desktop or in the **Start Menu**. Locate your **CD drive**, which usually has an icon with a picture of a CD. Double click on the icon with your left mouse button. Locate “**Setup**”. Double click on the icon with your left mouse button. The CD should run.
  - b) Click on **Run** in the **Start Menu**. Click on **Browse**. Locate and click on your CD drive. Click on “**Setup**”. Click **Open**. If your CD drive is your D drive, it should say "D:\Setup.exe" in the Run window. Click **OK**. The CD should run.
4. On the “Select Language” screen, “**English**” is selected by default. Click “**Next**” to continue.
5. On the “Welcome” screen, click “**Next**” to continue.
6. On the “Select Destination Directory” screen, you may “**Browse**” to select an alternate destination for the keyboard and mouse software folder. It is recommended that you use the default destination. Click “**Next**” to continue.

7. On the “Select Program Folder” screen, you may select the folder under Programs in the Start Menu that the keyboard and mouse menus are placed. It is recommended that you use the default folder. Click “**Next**” to continue.
8. On the “Start Copying Files” screen, click “**Next**” to continue.
9. When prompted, select “**Yes, I want to restart my computer now**”. Then click “**Finish**”. Your computer will restart.
10. After the drivers and software have been loaded and the computer has rebooted, all keyboard and mouse functions should work properly. Hot keys and mouse buttons can be customized by double clicking on the keyboard () or mouse () icon in the system tray and selecting from the menu screens. See section 7 and 8 for more details.
11. Clicking on the Keyboard or Mouse icon in the Control Panel allows you to customize standard keyboard and mouse functions. The Control Panel is located in the Start Menu. (In some versions of Windows, the Control Panel is located under “Settings” in the Start menu.)

**PLEASE NOTE THE FOLLOWING SPECIAL FEATURES OF YOUR KEYBOARD:**

1. After the drivers and software have been installed, there are icons in the system tray for **Scroll Lock** , **Number Lock** , and **Caps Lock**  to indicate when these items are active (green box with white characters) or inactive (gray box with gray characters). These icons can be turned on or off in the Keyboard Settings menu.
2. When **Num Lock** is active, the green Num Lock LED will illuminate.

## 7. Keyboard Settings

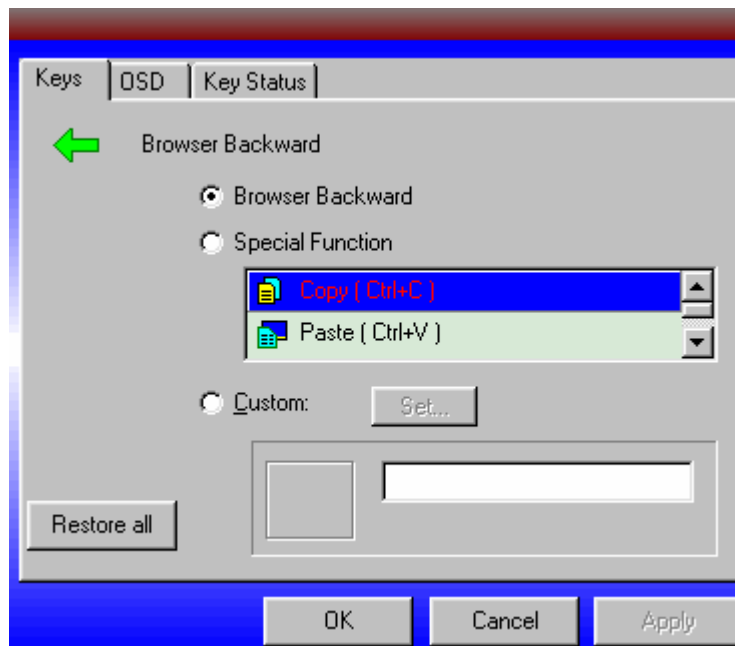
To access the keyboard settings, double-click on the keyboard icon (🖱️) in the system tray located in the lower right hand side of your screen.

### 7-1. Programming Hot Keys

1. Select the hot key you wish to program from the keyboard picture shown below. The selected key will be highlighted in yellow.



2. Select the desired function from the “Keys” tab.
  - a. Select from the list shown and click **OK**. You’re finished!
  - b. If you don’t see the function you want, click **Custom** and **Set**. Continue on to step 3.





3. Choose the special function using step a or step b below. You may not reuse shortcuts already utilized by the keyboard hot keys. This includes things like your web browser and default mail program.
  - a. Click “**Browse**” to locate an executable file.
  - b. Drag the shortcut of an executable application or folder and drop it in the square indicated below.
4. Click **Next** to continue.



Drop the application or folder short cut here.

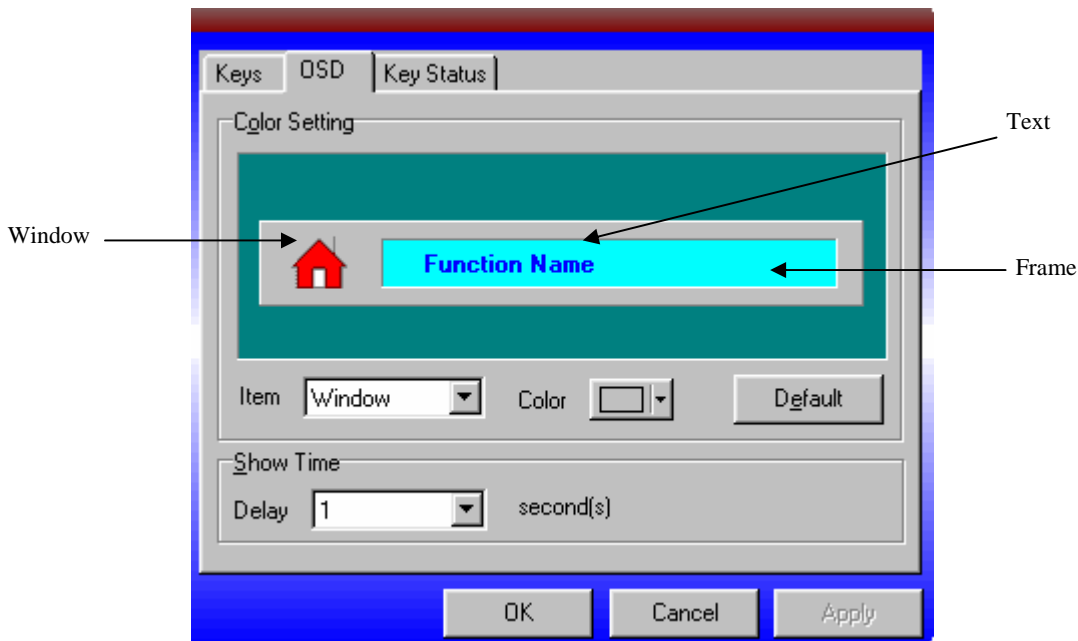
5. Enter a name for the function you have selected. When you use the selected hot key, the function name will appear in the lower right hand corner of the screen while the application is loading or the folder is opening.
6. Click **Next** to continue.
7. Click **Finish** on the next screen to complete the process.



## 7-2. Customize the Hot Key Display

When you use any hot key, the Function Name and icon are briefly displayed in the lower right hand corner. You can select the colors and duration of the display from the OSD tab.

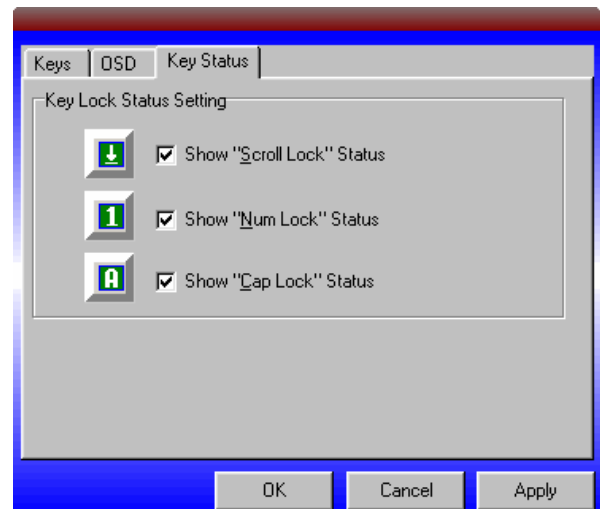
1. Select the area you want to change from the Item drop down menu. You can select Window, Frame or Text.
2. Select the color you would like to change to from the Color drop down menu.
3. Select the amount of time the Function Name and icon are displayed from the Delay drop down menu. You may select between 1 and 10 seconds.



## 7-3. Scroll Lock, Num Lock & Caps Lock icons

On the Key Status tab, check the boxes next to the icons you want displayed in the task bar.

Uncheck the boxes next to the icons you don't want displayed in the task bar.

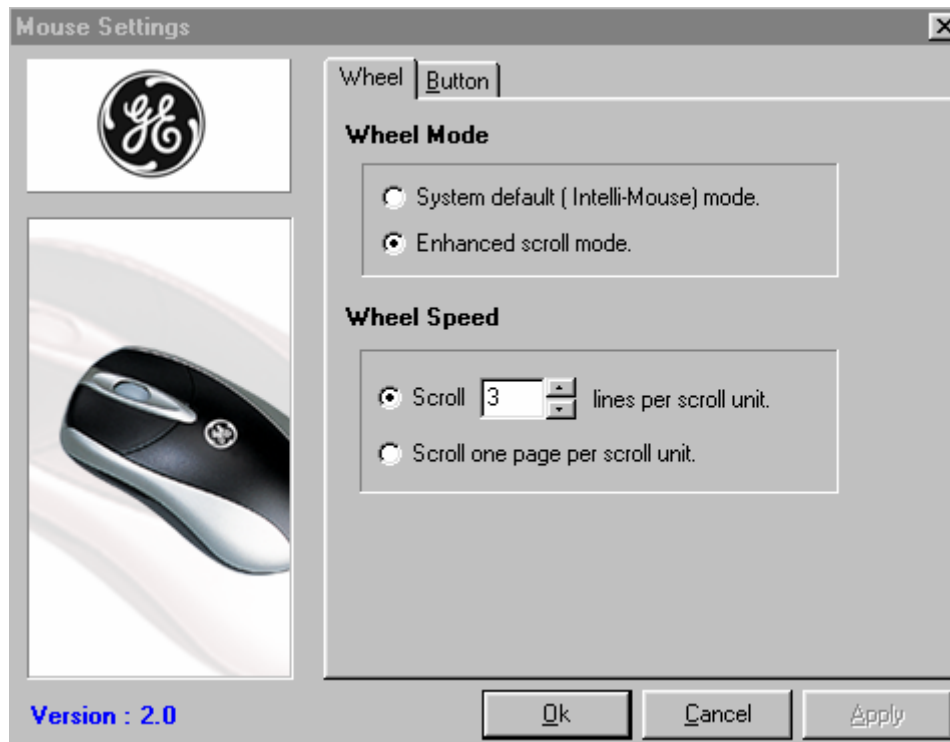


## 8. Mouse Settings

To access the mouse settings, double-click on the mouse icon (🖱️) in the system tray located in the lower right hand side of your screen.

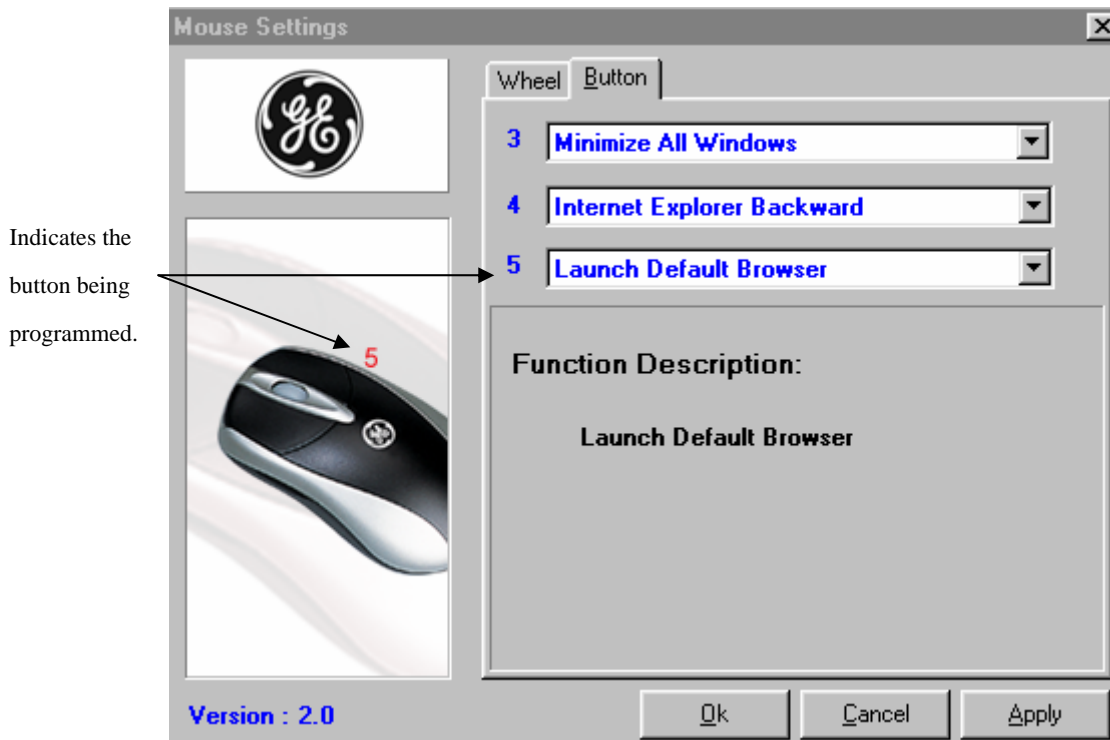
### 8-1. Scroll Wheel Settings

On the “Wheel” tab, select **System default mode** if you’d like your scroll wheel to act like a standard scroll mouse. Select **Enhanced scroll mode** to select wheel speed under “Wheel Speed”.



## 8-2. Button Programming

From the **Button** tab, select one of 47 options from the drop down menu. When you select a drop down menu, the button number will appear on the picture of the mouse next to the corresponding button being programmed. After selecting the function of each button, press **Apply**. Press **OK** to close the dialogue box.



## 9. Software Un-Install Instructions

1. When you are ready to uninstall the keyboard and mouse software, you must exit the programs. To do so right-click on the keyboard icon in the system tray, then click **Exit**. Right-click on the mouse icon in the system tray, and then click **Exit**.
2. Close all open applications, then you have two choices. Follow either method below.

### Method 1

1. Open the **Start Menu**
2. Click on **Programs**
3. Click on **Keyboard Mouse Tool**
4. Click on **Uninstall Keyboard Mouse Tool**
5. The uninstall screen will open. Click **Next**.
6. When prompted, select “**Yes, I want to restart my computer now**”. Then click “**Finish**”. Your computer will restart.









### Method 2

1. Open the **Start Menu**.
2. Select “**Control Panel**”. (In some versions of Windows, Control Panel is located under Settings in the Start Menu.)
3. Select “**Add/Remove Programs**”.
4. In the list of software, select “**Keyboard Mouse Tool**”.
5. Select “**Add/Remove**”.
6. Click “**Next**”.
7. When prompted, select “**Yes, I want to restart my computer now**”. Then click “**Finish**”. Your computer will restart.


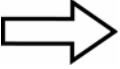





## 10. Special Function Hot Keys

Hot keys give you quick and direct access to programs, files or commands. Using hot keys can increase your productivity, as you do not have to take your hand off the keyboard so frequently (e.g. to use the mouse). The available hot keys depend on the operating system and application being used. The following list shows the icon on each hot key and the standard assignment of each. Most hot keys can be reconfigured with the Multimedia Keyboard and Optical Mouse Software (see sections 7 & 8).





### 10-1. Description of Multimedia Key Zone

|   |                                 |  |
|---|---------------------------------|--|
|    | <b>Volume down</b>              | Decreases the volume. Hold down to decrease the volume more quickly.   |
|    | <b>Volume up</b>                | Increases the volume. Hold down to increase the volume more quickly.   |
|    | <b>Mute</b>                     | Turn all sound off or on.  |
|   | <b>Launch Media Application</b> | Open your default media application.   |
|  | <b>Play/Pause</b>               | Play or pause media. Once paused, press this key again to resume playing.  |
|  | <b>Stop</b>                     | Stop playing media.  |
|  | <b>Previous Track</b>           | Skip to the previous media track. Press once to return to the beginning of the current track and press again for each preceding track. |
|  | <b>Next Track</b>               | Skip to the next media track.  |

## 10-2. Description of Internet Key Zone

|  |              |   |
|--|--------------|---|
|   | Back         | Go back to the previously viewed page in programs that support the “Back” command, such as a Web browser.   |
|   | Forward      | Go to the next page (if it was previously viewed in the same session) in programs that support the “Forward” command, such as a Web browser.        |
|   | Stop         | Stop loading or refreshing a Web page or the contents of a particular window.   |
|   | Refresh      | Update the information on an active Web page or the contents of a particular window.  |
|   | Search       | Open the Internet Explorer Search pane  |
|   | My favorites | Open the Internet Explorer Favorites pane. This is where you can store shortcuts to frequently used files, websites or other items for easy access. |
|  | Home         | Opens your default web browser in a new window and goes to the Home Web page.   |

### 10-3. Description of Windows Key Zone

|   |             |  |
|---|-------------|--|
|  | Email       | Starts the default e-mail program. If you are not sure what the default e-mail program is, press this key to find out.   |
|  | My Computer | Opens My Computer. My computer shows the contents of all your storage drives and network drives. From here you can search for and open files and folders.  |
|  | Calculator  | Opens the calculator.  |
|  | Sleep       | Puts the system into sleep mode if the PC supports power management and has it enabled. The user can put the computer to sleep at the press of any button, protecting data and saving energy. If power management is not enabled, this key will not work. Press sleep again to bring your system back to operational mode. |



## 11. Special Mouse Functions

1. Standard Left Mouse Button – In any Windows® application, click once to select files or programs or double click to open selected applications. This button cannot be programmed.
2. Standard Right Mouse Button – In any Windows® application, right click to select item and display a pop-up menu of common commands. This button cannot be programmed.



3. Scroll Wheel and Button – In applications that support it, roll the scroll wheel to move up or down. The scroll wheel also doubles as a third button. By default, this button activates or deactivates scroll lock. This feature allows any movement of the mouse to scroll through your document. This button can also be programmed to any one of 47 common functions using the included mouse software.
4. Back Web Navigation Button – Click to back up to the previous screen in internet browsers, Windows® Explorer, or any other supporting application. This button can also be programmed to any one of 47 common functions using the included mouse software.
5. Forward Web Navigation Button - Click to skip to the next screen in Internet browsers, Windows® Explorer, or any other supporting application. This function typically works only if you have already been to the next screen and used the “back” function to return to the current screen. This button can also be programmed to any one of 47 common functions using the included mouse software.

## 12. Troubleshooting

- **The Multimedia Keyboard and Mouse Software does not work properly**  
Make sure all other keyboard and mouse software has been removed from your PC. To remove the other software, use “Add/Remove Programs” in the Control Panel. Then restart your computer and re-install the Multimedia Keyboard and Mouse Software following the instructions in Section 6.
- **Add, Remove or Re-install the Multimedia Keyboard and Mouse Software**  
Before Re-installing the software, make sure it has been removed. To remove the software, follow the steps in Section 9. To Re-Install the software, follow the steps in Section 6.
- **Other application software will not install properly**  
This may be due to the Multimedia Keyboard and Mouse Software. Remove the software following the steps in Section 9. Install the required application, and then reinstall the Multimedia Keyboard and Mouse Software using the steps in Section 6.
- **“Pre-track” and “Next track” do not stop**  
When these hot keys are held down the CD player normally continues searching for the next or previous track. If this does not work it is due to the speed of your CD-ROM drive. The use of a high performance CD-ROM drive is recommended.
- **VCD tracks or MPEG files cannot be played**  
Make sure you have installed Windows® Media Player 6 or later. You can download the current Media Player from the Microsoft® Web site.
- **The default Microsoft Windows shortcut keys by cannot be assigned**  
The Multimedia Keyboard and Mouse Software has taken over some system resources for the shortcut keys. The following 5 combination keys cannot be used again:  
“Ctrl + Alt + E”, “Ctrl + Alt + P”, “Ctrl + Alt + O”, “Ctrl + Alt + D”, “Ctrl + Alt + C”
- **Scrolling left & right does not move smoothly**  
Your operating system may not support this function.
- **The keyboard does not work properly**  
Turn off your computer. Disconnect the keyboard plug from the PC. Wait 30 seconds. Reconnect your keyboard. Turn on your computer.

**If you still cannot solve the problem, please contact Customer Support.**

## 13. 3 Year Limited Warranty

**THREE YEAR LIMITED WARRANTY:** Jasco Products Company warrants this product to be free from manufacturing defects for a period of 3 years from the original date of consumer purchase. This warranty is limited to the repair or replacement of this product only and does not extend to consequential or incidental damage to other products that may be used with this unit. This warranty is in lieu of all other warranties express or implied. Some states do not allow limitations on how long an implied warranty lasts or permit the exclusion or limitation of incidental or consequential damages, so the above limitations may not apply to you. This warranty gives you specific rights, and you may also have other rights which vary from state to state. If unit should prove defective within the warranty period, return prepaid with dated proof of purchase to:

Jasco Products Company

311 N.W. 122nd

Oklahoma City, OK. 73114

## 14. FCC Statement

### **Notice: Federal Communications Commission (FCC) requirements, Part 15**

This equipment has been tested and found to comply with the limits for a class B digital device, pursuant to part 15 of the FCC Rules. These limits are designed to provide reasonable protection against harmful interference in a residential installation. This equipment generates, uses and can radiate radio frequency energy and, if not installed and used in accordance with the instructions, may cause harmful interference to radio communications. However, there is no guarantee that interference will not occur in a particular installation. If this equipment does cause harmful interference to radio or television reception, which can be determined by turning the equipment off and on, the user is encouraged to try to correct the interference by one or more of the following measures:

- Reorient or relocate the receiving antenna.
- Increase the separation between the equipment and receiver.
- Connect the equipment into an outlet on a circuit different from that to which the receiver is connected.
- Consult the dealer or an experienced radio/TV technician for help.

**CAUTION:** Any changes of modifications not expressly approved by the grantee of this device could void the users authority to operate the equipment. This device complies with Part 15 of the FCC Rules. Operation is subject to the following two conditions: (1) this device may not cause harmful interference, and (2) this device must accept any interference received, including interference that may cause undesired operation.

**Distributed for THOMSON INC**  
**by Jasco Products Company**  
**311 N.W. 122<sup>nd</sup> Street, Oklahoma City, OK 73114**  
**[www.jascoproducts.com](http://www.jascoproducts.com)**

## Free Manuals Download Website

<http://myh66.com>

<http://usermanuals.us>

<http://www.somanuals.com>

<http://www.4manuals.cc>

<http://www.manual-lib.com>

<http://www.404manual.com>

<http://www.luxmanual.com>

<http://aubethermostatmanual.com>

Golf course search by state

<http://golfingnear.com>

Email search by domain

<http://emailbydomain.com>

Auto manuals search

<http://auto.somanuals.com>

TV manuals search

<http://tv.somanuals.com>