



GENERAC® STANDBY GENERATORS

22 kVA

Liquid-Cooled Engine Generator Sets

Standby Power Rating

Model QT02724MNAX - 22 kVA, 50Hz, 1Ø

Model QT02724RNAX - 27 kVA, 50Hz, 3Ø

INCLUDES:

- Generac Naturally Aspirated Gaseous Fueled 2.4L Engine
- Two Line LCD Tri-lingual Digital Nexus™ Controller
- Sound Attenuated Enclosure
- Isochronous Electronic Governor
- Closed Coolant Recovery System
- Smart Battery Charger
- UV/Ozone Resistant Hoses
- ±1% Voltage Regulation
- Natural Gas or LP Operation
- 1 Year Limited Warranty



FEATURES

- **INNOVATIVE DESIGN & PROTOTYPE TESTING** are key components of GENERAC'S success in "IMPROVING POWER BY DESIGN." But it doesn't stop there. Total commitment to component testing, reliability testing, environmental testing, destruction and life testing, plus testing to applicable CSA, NEMA, EGSA, and other standards, allows you to choose GENERAC POWER SYSTEMS with the confidence that these systems will provide superior performance.
- **TEST CRITERIA:**
 - ✓ **PROTOTYPE TESTED**
 - ✓ **SYSTEM TORSIONAL TESTED**
 - ✓ **NEMA MG1-22 EVALUATION**
 - ✓ **MOTOR STARTING ABILITY**
- **SOLID-STATE, FREQUENCY COMPENSATED VOLTAGE REGULATION.** This state-of-the-art power maximizing regulation system is standard on all Generac models. It provides optimized FAST RESPONSE to changing load conditions and MAXIMUM MOTOR STARTING CAPABILITY by electronically torque-matching the surge loads to the engine. An unequalled ±1% voltage regulation.
- **SINGLE SOURCE SERVICE RESPONSE** from Generac's extensive dealer network provides parts and service know-how for the entire unit, from the engine to the smallest electronic component.
- **GENERAC TRANSFER SWITCHES.** Long life and reliability are synonymous with GENERAC POWER SYSTEMS. One reason for this confidence is that the GENERAC product line includes its own transfer systems and controls for total system compatibility.



GENERATOR SPECIFICATIONS

TYPE	Synchronous
ROTOR INSULATION	Class H
STATOR INSULATION	Class H
TELEPHONE INTERFERENCE FACTOR (TIF)	< 50
ALTERNATOR OUTPUT LEADS 3 PHASE	4 wire
BEARINGS	Sealed Ball
COUPLING	Flexible Disc
LOAD CAPACITY (STANDBY RATING)	22kVA 1Ø 27kVA 3Ø
EXCITATION SYSTEM	Direct

VOLTAGE REGULATION

TYPE	Electronic
SENSING	Single Phase
REGULATION	± 1%

GENERATOR FEATURES

Revolving field heavy duty generator
Directly connected to the engine
Operating temperature rise 120 °C above a 40 °C ambient
Insulation is Class H rated at 150 °C rise
All models are fully prototyped tested

ENCLOSURE FEATURES

Aluminum weather protective enclosure	Ensures protection against mother nature. Electrostatically applied textured epoxy paint for added durability.
Enclosed critical grade muffler	Quiet, critical grade muffler is mounted inside the unit to prevent injuries.
Small, compact, attractive	Makes for an easy, eye appealing installation.
SAE	Sound attenuated enclosure ensures quiet operation

ENGINE SPECIFICATIONS

MAKE	Generac
MODEL	In line
CYLINDERS	4
DISPLACEMENT	2.4 Liter
BORE	3.41
STROKE	3.94
COMPRESSION RATIO	8.5:1
INTAKE AIR SYSTEM	Naturally Aspirated
LIFTER TYPE	Hydraulic

GOVERNOR SPECIFICATIONS

TYPE	Electronic
FREQUENCY REGULATION	Isochronous
STEADY STATE REGULATION	± 0.25%

ENGINE LUBRICATION SYSTEM

OIL PUMP	Gear
OIL FILTER	Full flow spin-on cartridge
CRANKCASE CAPACITY	4 Quarts

ENGINE COOLING SYSTEM

TYPE	Closed
WATER PUMP	Belt driven
FAN SPEED	1650
FAN DIAMETER	17.75 inches
FAN MODE	Pusher

FUEL SYSTEM

FUEL TYPE	Natural gas, propane vapor
CARBURETOR	Down Draft
SECONDARY FUEL REGULATOR	Standard
FUEL SHUT OFF SOLENOID	Standard
OPERATING FUEL PRESSURE	5" - 14" H ₂ O

ELECTRICAL SYSTEM

BATTERY CHARGE ALTERNATOR	12V 30 Amp
STATIC BATTERY CHARGER	2 Amp
RECOMMENDED BATTERY	Group 26, 525CCA
SYSTEM VOLTAGE	12 Volts

Rating definitions - Standby: Applicable for supplying emergency power for the duration of the utility power outage. No overload capability is available for this rating. (All ratings in accordance with BS5514, ISO3046 and DIN6271). (All ratings in accordance with BS5514, ISO3046, ISO8528, SAE J1349 and DIN6271).

OPERATING DATA					
KVA RATING	22, 1Ø 27, 3Ø				
ENGINE SIZE	2.4 Liter Inline 4				
GENERATOR OUTPUT VOLTAGE/kVA - 50Hz	kVA	AMP		CB Size	
110/220V, 1-phase, 1.0 pf 231/400V, 3-phase, 0.8 pf	21.6 27	98 39		125 50	
ENGINE FUEL CONSUMPTION	Natural Gas		Propane		
	(ft ³ /hr.)	(M ³ /hr.)	(gal/hr.)	(liters/hr.)	(M ³ /hr.)
25% of rated load	90	2.55	0.99	3.75	1.02
50% of rated load	164	4.65	1.81	6.84	1.86
75% of rated load	239	6.77	2.63	9.97	2.71
100% of rated load	299	8.47	3.30	12.47	3.39
For Btu content, multiply ft ³ /hr x 2520 (LP) or ft ³ /hr x 1000 (NG)					
ENGINE COOLING					
Air flow (inlet air including alternator and combustion air)	ft ³ /min.	2,000			
System coolant capacity	US gal.	2.5			
Heat rejection to coolant	BTU/hr.	100,000			
Max. operating air temp. on radiator	°C (°F)	60 (150)			
Max. ambient temperature	°C (°F)	50 (140)			
COMBUSTION AIR REQUIREMENTS					
Flow at rated power 50 Hz	cfm	57			
SOUND EMISSIONS IN DBA					
Normal operation at 7 meters		61			
EXHAUST					
Exhaust flow at rated output 50 Hz	cfm	110			
Exhaust temp. at muffler outlet	°F	885			
ENGINE PARAMETERS					
Rated synchronous RPM	50 Hz	1500			
HP at rated kVA	50 Hz	35			
POWER ADJUSTMENT FOR AMBIENT CONDITIONS					
Temperature Deration	3% for every 10 °C above - °C 1.65% for every 10 °F above - °F	25 77			
Altitude Deration	1% for every 100 m above - m 3% for every 1000 ft. above - ft.	183 600			
ENCLOSURE					
Material		Aluminum			
Color		PMS 422 (Bisque)			

RATING: All three phase units are rated at 0.8 power factor. All single phase units are rated at 1.0 power factor. STANDBY RATING: Standby ratings apply to installations served by a reliable utility source. The standby rating is applicable to varying loads for the duration of a power outage. There is no overload capability for this rating. Ratings are in accordance with ISO-3046-1. Design and specifications are subject to change without notice.

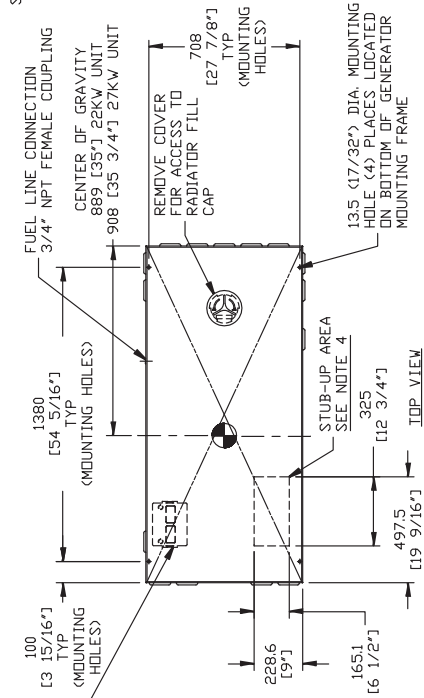
NEXUS™ CONTROL FEATURES

2-Line Plain Text LCD Display	Simple user interface for ease of operation.
Mode Switch	
-Auto	Automatic Start on Utility failure. 7 day exerciser.
-Off	Stops unit. Power is removed. Control and charger still operate.
-Manual/Test (start)	Start with starter control, unit stays on. If utility fails, transfer to load takes place.
Programmable start delay between 10-30 seconds	Standard
Engine Start Sequence	Cyclic cranking: 16 sec. on, 7 rest (90 sec. maximum duration).
Engine Warm-up	5 seconds
Engine Cool-Down	1 minute
Starter Lock-out	Starter cannot re-engage until 5 sec. after engine has stopped.
Smart Battery Charger	Standard
Automatic Voltage Regulation with Over and Under Voltage Protection	Standard
Automatic Low Oil Pressure Shutdown	Standard
Overspeed Shutdown	Standard, 62.5Hz
High Temperature Shutdown	Standard
Overcrank Protection	Standard
Safety Fused	Standard
Failure to Transfer Protection	Standard
Low Battery Protection	Standard
50 Event Run Log	Standard
Future Set Capable Exerciser	Standard
Incorrect Wiring Protection	Standard
Internal Fault Protection	Standard
Common External Fault Capability	Standard
Governor Failure Protection	Standard

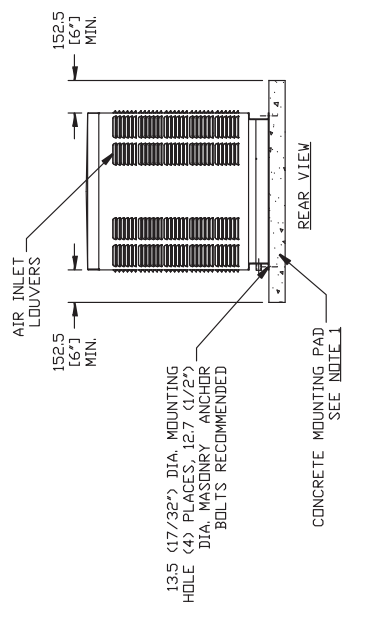
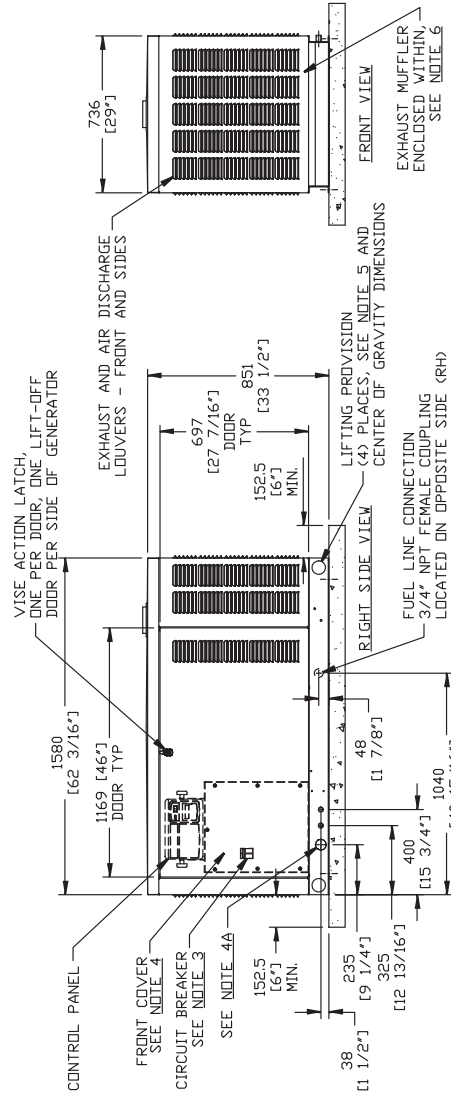
*Connections may vary , refer to the owner's manual for specific connection information.

SERVICE ITEM	ACCESS
OIL FILL CAP	THRU RIGHT DOOR
OIL DIP STICK	THRU RIGHT DOOR
OIL FILTER	THRU RIGHT DOOR
RADIATOR DRAIN HOSE	THRU LEFT DOOR
AIR CLEANER ELEMENT	THRU LEFT DOOR
SPARK PLUGS	THRU LEFT DOOR
MUFFLERS	SEE NOTE 6
FAN BELT	THRU RIGHT DOOR
BATTERY	THRU LEFT DOOR

REFERENCE OWNERS MANUAL FOR PERIODIC REPLACEMENT PART LISTINGS



- NOTES:**
- 1) MINIMUM RECOMMENDED CONCRETE PAD SIZE: 104" (41.0") WIDE X 189" (74 1/2") LONG. REFERENCE INSTALLATION GUIDE SUPPLIED WITH UNIT FOR CONCRETE PAD GUIDELINES.
 - 2) ALLOW SUFFICIENT ROOM ON ALL SIDES OF THE GENERATOR FOR MAINTENANCE AND SERVICING. THIS UNIT MUST BE INSTALLED IN ACCORDANCE WITH CURRENT APPLICABLE NFPA 37 AND NFPA 70 STANDARDS AS WELL AS ANY OTHER FEDERAL, STATE AND LOCAL CODES FOR MINIMUM DISTANCES FROM OTHER STRUCTURES.
 - 3) CIRCUIT BREAKER INFORMATION: SEE SPECIFICATION SHEET WITHIN OWNERS MANUAL.
 - 4) INSIDE STUB-UP AREA FOR AC LOAD LEAD CONDUIT CONNECTION, NEUTRAL CONNECTION, BATTERY CHARGER 120 VOLT AC (0.5 AMP MAX.) CONNECTION, ACCESS TO TRANSFER SWITCH CONTROL WIRES, AND TRANSFER SWITCH CONNECTION (IF SO EQUIPPED). REMOVE FRONT COVER FOR ACCESS.
 - 4A) ONE 1-1/2" NEMA ELECTRICAL KNOCKOUT AND TWO 1/2" NEMA ELECTRICAL KNOCKOUTS PROVIDED FOR OUTSIDE AC LOAD CONDUIT CONNECTION, NEUTRAL CONNECTION, BATTERY CHARGER 120 VOLT AC (0.5 AMP MAX.) CONNECTION, ACCESS TO TRANSFER SWITCH CONTROL WIRES, AND TRANSFER SWITCH CONNECTION (IF SO EQUIPPED). REMOVE FRONT COVER FOR ACCESS.
 - 5) REFERENCE OWNERS MANUAL FOR LIFTING WARNINGS.
 - 6) REMOVE LIFT-OFF ENCLOSURE TO ACCESS EXHAUST MUFFLER.



WEIGHT DATA			
ENGINE/KW	ENCLOSURE MATERIAL	WEIGHT (GENSET ONLY) (KG (LBS))	WEIGHT (SHIPPING CARTON/SKID) (GENSET, SKID, & CARTON) (KG (LBS))
2.4L/22KVA	ALUMINUM	405 (891)	434 (957)

Free Manuals Download Website

<http://myh66.com>

<http://usermanuals.us>

<http://www.somanuals.com>

<http://www.4manuals.cc>

<http://www.manual-lib.com>

<http://www.404manual.com>

<http://www.luxmanual.com>

<http://aubethermostatmanual.com>

Golf course search by state

<http://golfingnear.com>

Email search by domain

<http://emailbydomain.com>

Auto manuals search

<http://auto.somanuals.com>

TV manuals search

<http://tv.somanuals.com>