

Liquid Coffee Dispenser

Model LCD2-1-SS



MODEL LCD2-1-SS



GRINDMASTER™
CORPORATION



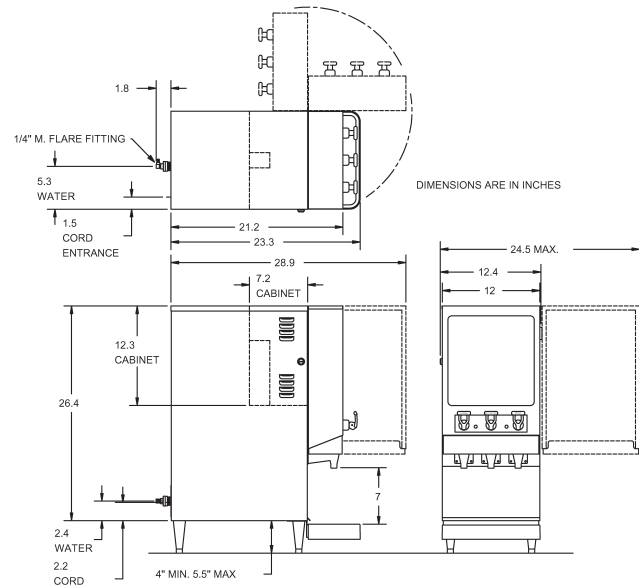
GRINDMASTER™

CORPORATION

Liquid Coffee Dispenser

Features:

- High ratio (50:1 - 110:1) and mid ratio (22:1 - 55:1) dispensers available
- Accommodates most 1/2 gal. (1.9 L) and 1 gal. (3.8 L) bag-in-the-box (2 per machine)
- 4.5 gal. (17 L) stainless steel hot water tank
- 7" (17.8 cm) cup clearance accommodates most 20 oz. (592 ml) cups
- Large attractive backlit merchandiser
- 3 dispense heads: Regular, Decaf, & Hot Water
- Digital controls for accurate mix ratios
- Product system shuts off dispense system when the bag-in-the-box is empty
- 15KW, 3ph for high volume applications



Specifications	Model LCD2-1-SS	Model LCD2-3-SS
Volts/Watts/Amps	(120/240V) / 6,600W / 28A 120V / 1,650W / 14A	(120/240V) / 15,000W / 36A / 3ph (120/208V) / 11,300W / 32A / 3ph
# Dispensers	2 heads + hot water	2 heads + hot water
Dispense Rate	2 oz. (59 ml) per second	2 oz. (59 ml) per second
Portion Range	50:1 to 110:1/or 22:1 to 55:1	50:1 to 110:1/or 22:1 to 55:1
Water Line Connection	3/8" (9.5 mm) male flare	3/8" (9.5 mm) male flare
Tank Size	4.5 gal. (17 L)	4.5 gal. (17 L)
Cup Clearance	7" (17.8 cm)	7" (17.8 cm)
Dimensions (H x W x D)	31" x 12" x 23" (79 cm x 31 cm x 59 cm)	31" x 12" x 23" (79 cm x 31 cm x 59 cm)
Ship Dimensions (H x W x D)	32" x 16-1/4" x 26-1/2" (81 cm x 41 cm x 67 cm)	32" x 16-1/4" x 26-1/2" (81 cm x 41 cm x 67 cm)
Weight	85 lbs. (38.2 kg)	85 lbs. (38.2 kg)
Ship Weight	90 lbs. (40.5 kg)	90 lbs. (40.5 kg)
Listings	UL, CUL & NSF	UL, CUL & NSF

Drink Output - # of 6 oz. (178 ml) cups per hour at:		
Water Inlet Temperature	120V	208V
60°F	110	340
160°F	500	1500

All specifications are subject to improvement or change without notice.

Ask about Grindmaster Corporation's line of Coffee Grinders, Coffee Brewers, Coffee Urns, Coffee Shuttles, Coffee Grindbrewers, Espresso Grinders, Espresso Brewers, Beverage Dispensers, Granita Machines and Beverage Freezers.



GRINDMASTER™

CORPORATION



Grindmaster® Coffee Grinders and Brewers • PrecisionBrew™ Brewing Systems • Espresso® Espresso Machines
Crathco® Hot Beverage Dispensers • Crathco® Cold and Frozen Beverage Dispensers • AMW Coffee and Tea Systems
Tel (502) 425-4776 • Fax (502) 425-4664 • 1-800-695-4500 (USA & Canada only)

P.O. Box 35020 • Louisville, KY 40232 • USA

www.grindmaster.com • email: info@grindmaster.com

Free Manuals Download Website

<http://myh66.com>

<http://usermanuals.us>

<http://www.somanuals.com>

<http://www.4manuals.cc>

<http://www.manual-lib.com>

<http://www.404manual.com>

<http://www.luxmanual.com>

<http://aubethermostatmanual.com>

Golf course search by state

<http://golfingnear.com>

Email search by domain

<http://emailbydomain.com>

Auto manuals search

<http://auto.somanuals.com>

TV manuals search

<http://tv.somanuals.com>