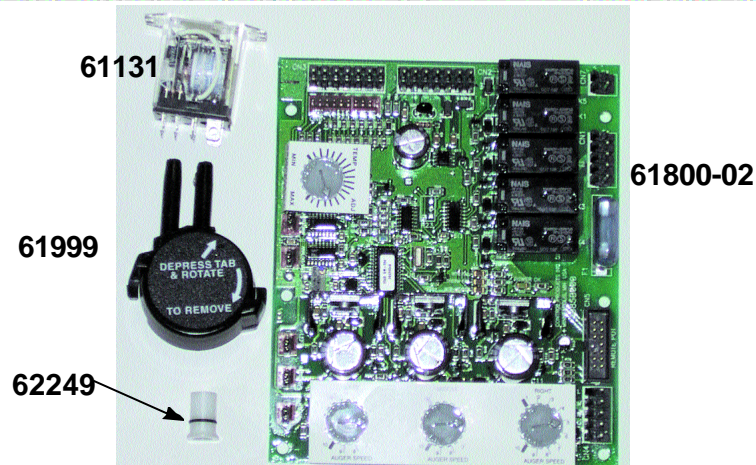
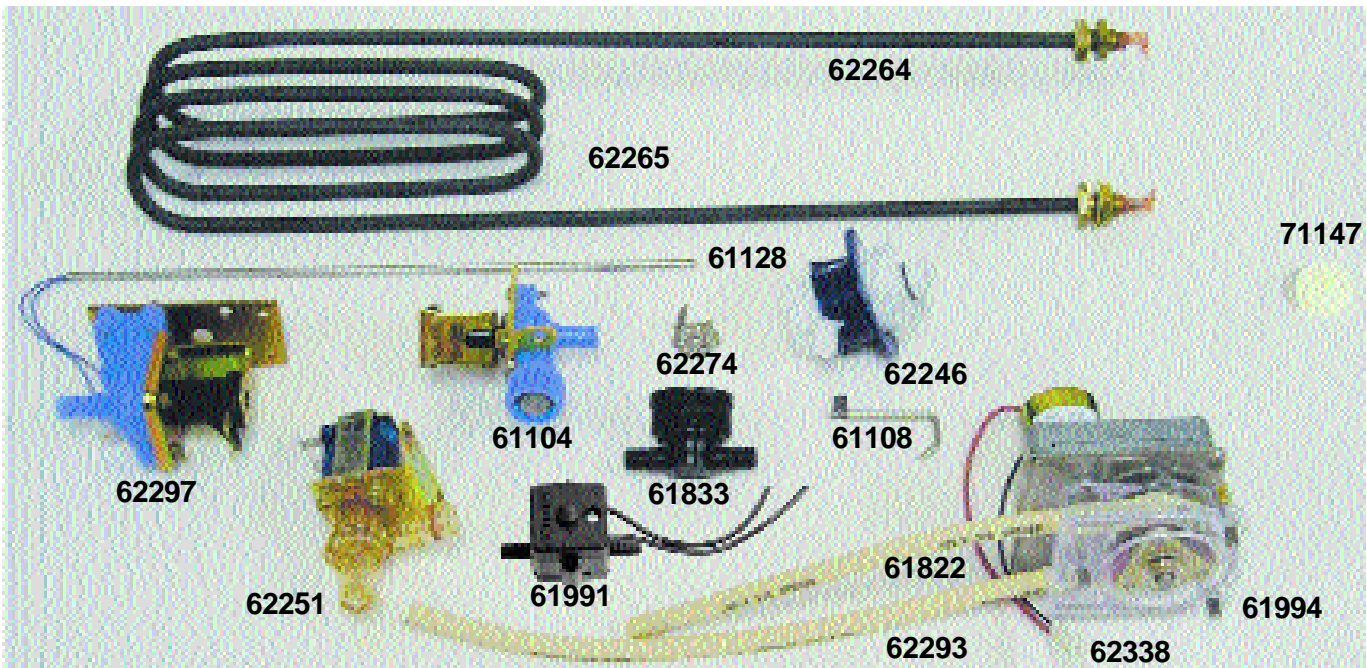


Models LCD2-1 & LCD2-3 Parts List



| Part # | Description |
|----------|-----------------------------------|
| 61104 | VALVE, INLET 1.2GPM |
| 61108 | PROBE, WATER LEVEL |
| 61128 | PROBE, THERMISTOR |
| 61131 | RELAY, HEATER |
| 61800-02 | CONTROLLER, AUTO/REMOTE/3-PORTION |
| 61882 | TUBING, 3-16 ID PUMP TUBING |
| 61991 | SWITCH, VACUUM 14" BDR |
| 61994 | PUMP, 3 ROLLER |
| 61999 | CAP, LCD DISPENSE SPOUT |
| 62246 | FITTING, RAYPAC BIB |
| 62249 | RESTRICTOR, LCD SPOUT |
| 62251 | VALVE, DUMP |
| 62264 | ELEMENT, HEATING 240V 500W |
| 62265 | ELEMENT, HEATING 240V 500W |
| 62274 | DIFFUSER, SPOUT |
| 62293 | TUBING, 1-8 ID PUMP TUBING |
| 62297 | VALVE, INLET 2.5GPM |
| 62338 | PUMP, 2 ROLLER |
| 61833 | FITTING, SCHOLLE "T" BIB |
| 71147 | GROMMET, PROBE |

Free Manuals Download Website

<http://myh66.com>

<http://usermanuals.us>

<http://www.somanuals.com>

<http://www.4manuals.cc>

<http://www.manual-lib.com>

<http://www.404manual.com>

<http://www.luxmanual.com>

<http://aubethermostatmanual.com>

Golf course search by state

<http://golfingnear.com>

Email search by domain

<http://emailbydomain.com>

Auto manuals search

<http://auto.somanuals.com>

TV manuals search

<http://tv.somanuals.com>