



Item # _____

Project _____

Date _____

Tamper Resistant Coffee Urn - Twin 10 gallon

High Capacity: Two Independent Brewing Systems

High Security: No Exposed Fasteners

Model 67710

Electric



Features:

- **Will Exceed High Volume Demand Burst, Two Independent Brewing Systems**

Two independent brewing heads brew into the 10 gallon (38L) liners simultaneously or independently. Brew heads are mounted under hinged lockable covers.

- **Innovative Indicators Eliminate Exterior Parts**

Indicator lights replace gauge glasses. Water hot light replaces thermometer. Completely internal air agitation system for each liner.

- **Designed For Safety**

Eliminates potential burn hazard with two layers of high density fiberglass insulated body.

- **Flanged Feet**

Urn can be fastened to counter top to prevent tipping or movement

- **Tamper Resistant**

All adjustable controls (timer, thermostats, sprayover flow control), are inside a lockable control box. Master on/off switch is behind a stainless steel, lockable panel. Control switches and pilot lights are protected behind a tamper resistant, one inch thick Lexan® cover plate.

- **Longer Average Life**

Internal frame is all A.I.S.I. type 304, 18-8 stainless steel.

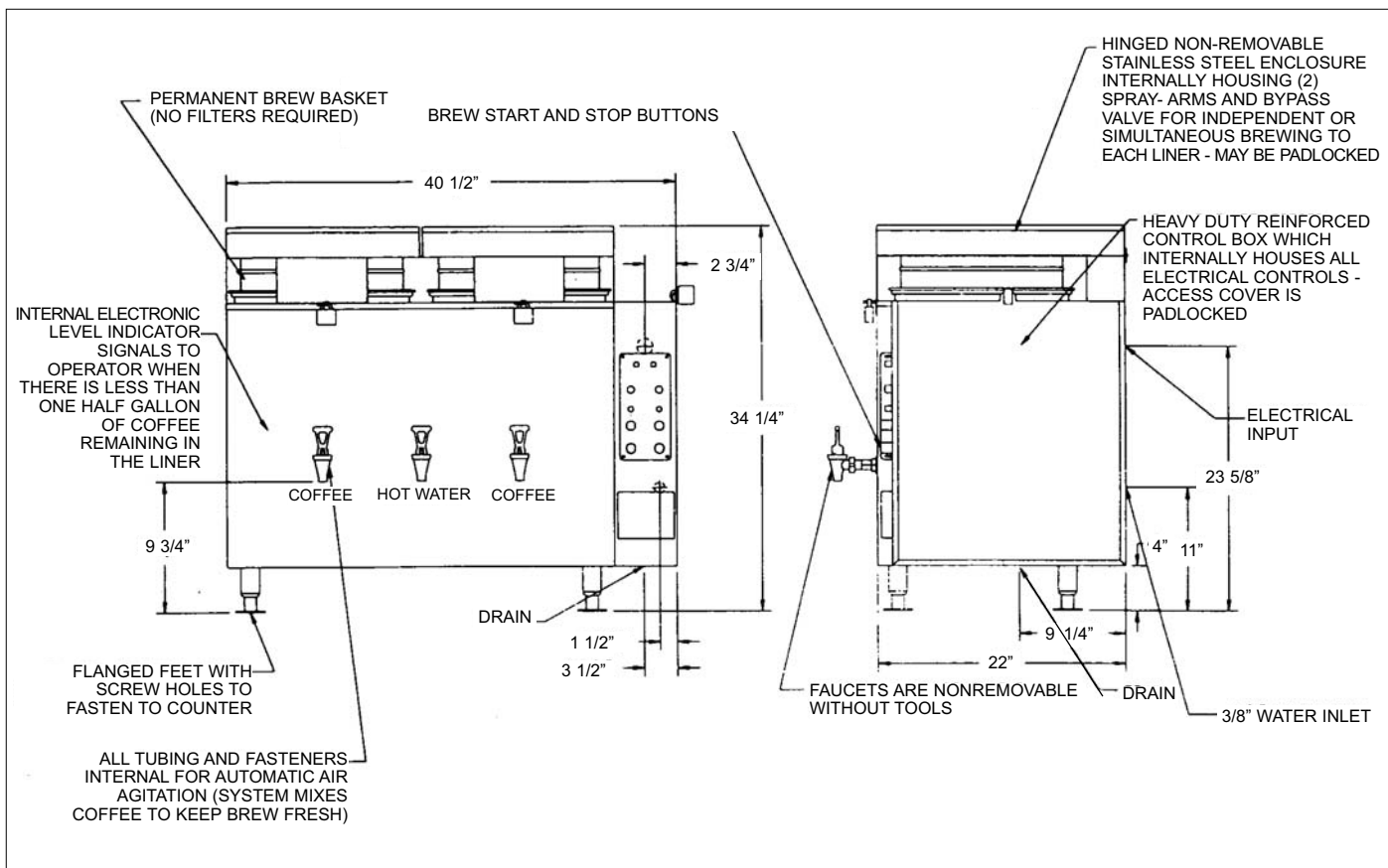
- **Saves Steps In Brewing**

Two permanent stainless steel brew baskets, so filter paper is eliminated.

Coffee Urn - Tamper Resistant

High Security / High Capacity

Coffee Brewing Equipment



67710				
Productivity, 50°F Inlet	40 gal. per hour			
Productivity, 130°F Inlet	80 gal. per hour			
Dimensions	40-1/2" W X 22" D X 34-1/4" H, (51" H With Cover Open)			
Electrical Options all models 15 KW	120/240V	1 Phase	3 Wire	63 Amps
	120/208V	1 Phase	3 Wire	72 Amps
	240V	3 Phase	3 Wire	36 Amps
	120/208V	3 Phase	4 Wire	42 Amps
	480V	3 Phase	3 Wire	18 Amps



GRINDMASTER™
CORPORATION

Grindmaster® Coffee Grinders and Brewers • PrecisionBrew™ Brewing Systems • Espresso® Espresso Machines
Crathco® Hot Beverage Dispensers • Crathco® Cold and Frozen Beverage Dispensers • AMW Coffee and Tea Systems
Tel (502) 425-4776 • Fax (502) 425-4664 • 1-800-695-4500 (USA & Canada only)

P.O. Box 35020 • Louisville, KY 40232 • USA

© Grindmaster Corporation, 1995
PRINTED IN USA

www.grindmaster.com • email: info@grindmaster.com

0807 Form # AM-204-03

Free Manuals Download Website

<http://myh66.com>

<http://usermanuals.us>

<http://www.somanuals.com>

<http://www.4manuals.cc>

<http://www.manual-lib.com>

<http://www.404manual.com>

<http://www.luxmanual.com>

<http://aubethermostatmanual.com>

Golf course search by state

<http://golfingnear.com>

Email search by domain

<http://emailbydomain.com>

Auto manuals search

<http://auto.somanuals.com>

TV manuals search

<http://tv.somanuals.com>