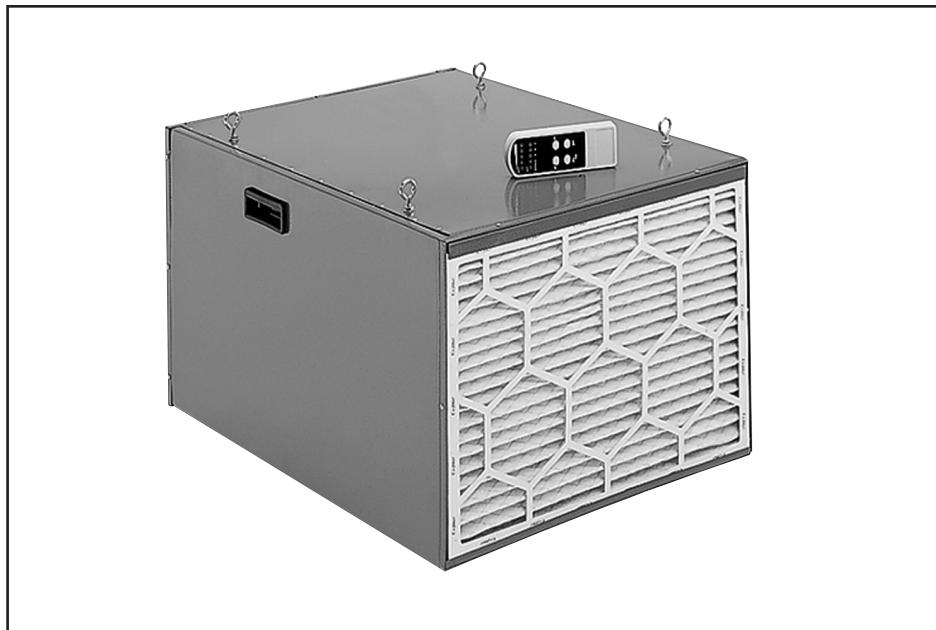


Grizzly **Industrial, Inc.**®

Heavy-Duty Double Air Filter **MODEL G9956** **INSTRUCTION MANUAL**



COPYRIGHT © APRIL, 2004 BY GRIZZLY INDUSTRIAL, INC.
**WARNING: NO PORTION OF THIS MANUAL MAY BE REPRODUCED IN ANY SHAPE
OR FORM WITHOUT THE WRITTEN APPROVAL OF GRIZZLY INDUSTRIAL, INC.**
#6008 PRINTED IN TAIWAN

WARNING

Some dust created by power sanding, sawing, grinding, drilling, and other construction activities contains chemicals known to the State of California to cause cancer, birth defects or other reproductive harm. Some examples of these chemicals are:

- Lead from lead-based paints.
- Crystalline silica from bricks, cement, and other masonry products.
- Arsenic and chromium from chemically treated lumber.

Your risk from these exposures varies, depending on how often you do this type of work. To reduce your exposure to these chemicals: work in a well ventilated area, and work with approved safety equipment, such as those dust masks that are specially designed to filter out microscopic particles.

Table of Contents

SECTION 1: SAFETY	2
Safety Instructions for Power Tools	2
Additional Safety for Double Air Filters	4
SECTION 2: GENERAL INFORMATION	5
Commentary	5
Contact Info	5
Machine Data	5
SECTION 3: CIRCUIT REQUIREMENTS	6
110V Operation	6
SECTION 4: SET UP	7
Unpacking	7
Inventory	7
Site Planning	8
Filter Capacity	9
Mounting Preparation	9
Eye Bolts	9
Hanging the Filter	10
SECTION 5: OPERATIONS	11
Operations	11
Speeds and Timer	12
SECTION 6: MAINTENANCE	13
Cleaning the Filters	13
SECTION 7: REFERENCE INFO	14
Aftermarket Accessories	14
G9956 Parts Breakdown	15
G9956 Parts List	16
G9956 Wire Diagram	17
Warranty and Returns	18

SECTION 1: SAFETY

WARNING

For Your Own Safety, Read Instruction Manual Before Operating this Equipment

The purpose of safety symbols is to attract your attention to possible hazardous conditions. This manual uses a series of symbols and signal words which are intended to convey the level of importance of the safety messages. The progression of symbols is described below. Remember that safety messages by themselves do not eliminate danger and are not a substitute for proper accident prevention measures.



Indicates an imminently hazardous situation which, if not avoided, **WILL** result in death or serious injury.



Indicates a potentially hazardous situation which, if not avoided, **COULD** result in death or serious injury.



Indicates a potentially hazardous situation which, if not avoided, **MAY** result in minor or moderate injury. It may also be used to alert against unsafe practices.

NOTICE

This symbol is used to alert the user to useful information about proper operation of the equipment.

WARNING

Safety Instructions for Power Tools

- KEEP GUARDS IN PLACE** and in working order.
- REMOVE ADJUSTING KEYS AND WRENCHES.** Form a habit of checking to see that keys and adjusting wrenches are removed from tool before turning on.
- KEEP WORK AREA CLEAN.** Cluttered areas and benches invite accidents.
- DO NOT USE IN DANGEROUS ENVIRONMENT.** DO NOT use power tools in damp or wet locations, or where any flammable or noxious fumes may exist. Keep work area well lighted.
- KEEP CHILDREN AND VISITORS AWAY.** All children and visitors should be kept at a safe distance from work area.
- MAKE WORKSHOP CHILD PROOF** with padlocks, master switches, or by removing starter keys.
- DO NOT FORCE TOOL.** It will do the job better and safer at the rate for which it was designed.
- USE RIGHT TOOL.** DO NOT force tool or attachment to do a job for which it was not designed.

WARNING

Safety Instructions for Power Tools

9. **USE PROPER EXTENSION CORD.** Make sure your extension cord is in good condition. Conductor size should be in accordance with the chart below. The amperage rating should be listed on the motor or tool nameplate. An undersized cord will cause a drop in line voltage resulting in loss of power and overheating. Your extension cord must also contain a ground wire and plug pin. Always repair or replace extension cords if they become damaged.

Minimum Gauge for Extension Cords

AMP RATING	LENGTH		
	25ft	50ft	100ft
0-6	16	16	16
7-10	16	16	14
11-12	16	16	14
13-16	14	12	12
17-20	12	12	10
21-30	10	10	No

10. **WEAR PROPER APPAREL.** DO NOT wear loose clothing, gloves, neckties, rings, bracelets, or other jewelry which may get caught in moving parts. Non-slip footwear is recommended. Wear protective hair covering to contain long hair.
11. **ALWAYS USE SAFETY GLASSES.** Also use face or dust mask if cutting operation is dusty. Everyday eyeglasses only have impact resistant lenses, they are NOT safety glasses.
12. **SECURE WORK.** Use clamps or a vise to hold work when practical. It is safer than using your hand and frees both hands to operate tool.
13. **DO NOT OVERREACH.** Keep proper footing and balance at all times.
14. **MAINTAIN TOOLS WITH CARE.** Keep tools sharp and clean for best and safest performance. Follow instructions for lubricating and changing accessories.

15. **USE RECOMMENDED ACCESSORIES.** Consult the instruction manual for recommended accessories. The use of improper accessories may cause risk of injury.

16. **REDUCE THE RISK OF UNINTENTIONAL STARTING.** On machines with magnetic contact starting switches there is a risk of starting if the machine is bumped or jarred. Always disconnect from power source before adjusting or servicing. Make sure switch is turned OFF before reconnecting.

17. **MANY WOODWORKING TOOLS CAN "KICKBACK" THE WORKPIECE** toward the operator if not handled properly. Know what conditions can create "kickback" and know how to avoid them. Read the manual accompanying the machine thoroughly.

18. **CHECK DAMAGED PARTS.** Before further use of the tool, a guard or other part that is damaged should be carefully checked to determine that it will operate properly and perform its intended function. Check for alignment of moving parts, binding of moving parts, breakage of parts, mounting, and any other conditions that may affect its operation. A guard or other part that is damaged should be properly repaired or replaced.

19. **NEVER LEAVE TOOL RUNNING UNATTENDED. TURN POWER OFF. DO NOT** leave tool until it comes to a complete stop.

20. **NEVER OPERATE A MACHINE WHEN TIRED, OR UNDER THE INFLUENCE OF DRUGS OR ALCOHOL.** Full mental alertness is required at all times when running a machine.

21. **NEVER ALLOW UNSUPERVISED OR UNTRAINED PERSONNEL TO OPERATE THE MACHINE.** Make sure any instructions you give in regards to the operation of the machine are approved, correct, safe, and clearly understood.

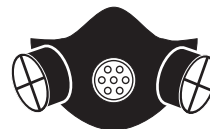
WARNING

Additional Safety for Double Air Filters

- 1. THIS DOUBLE AIR FILTER IS TO BE USED FOR WOOD DUST COLLECTION ONLY.** DO NOT use this machine to filter toxic fumes or paint spray. DO NOT use this machine to dissipate smoke or fumes.
- 2. UNPLUG MACHINE BEFORE REMOVING FILTER.** Removing the filters exposes the fan blade, which may cause serious injury if contacted while the machine is connected to its power source.
- 3. PROBLEMS CONCERNED WITH ANY MOVING PARTS** or accessories must be investigated and corrected with the power disconnected and after everything has come to a complete stop.
- 4. SUSPENDED DUST PARTICLES IN CONJUNCTION WITH AN IGNITION SOURCE,** may cause an explosion. Do not operate this machine in areas where explosion risks would be high if dust were dispersed into the area. Areas of high risk include, but are not limited to, areas near pilot lights or open flames.
- 5. AVOID COLLECTING ANY MATERIAL THAT IS BURNING OR SMOKING,** this includes matches, cigarettes, and hot ashes.
- 6. ALWAYS OPERATE THE MACHINE WITH THE FILTER IN PLACE.** When the filter is removed, the impeller is exposed to the unfiltered opening.
- 7. WHEN EMPTYING DUST FROM THE COLLECTION BAGS,** wear a respirator and safety glasses. Empty dust into an approved container and dispose of properly.
- 8. IF AT ANY TIME YOU ARE EXPERIENCING DIFFICULTIES PERFORMING THE INTENDED OPERATION,** stop using the machine! Then contact our service department or ask a qualified expert how the operation should be performed.
- 9. BE AWARE THAT CERTAIN WOODS MAY CAUSE AN ALLERGIC** reaction in people and animals, especially when exposed to fine dust. Make sure you know what type of wood dust you will be exposed to in case there is a possibility of an allergic reaction. Always wear an ANSI approved respirator!
- 10. THIS MACHINE WILL NOT PROTECT AGAINST LEAD-PAINT DUST OR ASBESTOS FIBERS.** These materials must be collected with special equipment because of the high hazard to human health. DO NOT attempt to collect these materials with this machine.

CAUTION

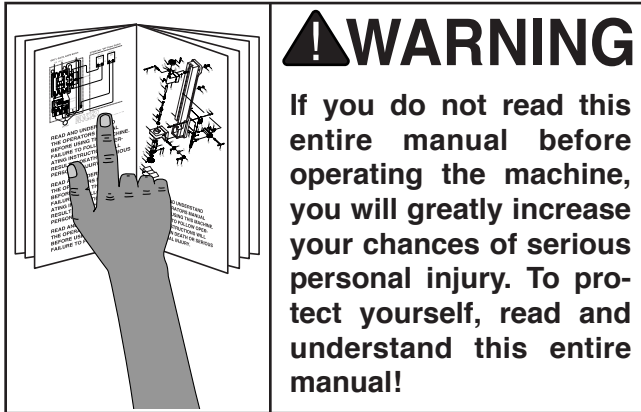
No list of safety guidelines can be complete. Every shop environment is different. Always consider safety first, as it applies to your individual working conditions. Use this and other machinery with caution and respect. Failure to do so could result in serious personal injury, damage to equipment or poor work results.



CAUTION

Operations that generate large amounts of any kind of dust may warrant the use of a respirator even though the air filter is running. The double air filter is not a substitute for a respirator!

SECTION 2: GENERAL INFORMATION



Commentary

Grizzly Industrial, Inc. is proud to offer the Model G9956 Heavy-Duty Double Air Filter. This air filter is part of Grizzly's growing family of fine machinery. When used according to the guidelines stated in this manual, you can expect years of trouble-free, enjoyable operation.

We are also pleased to provide this manual with the Model G9956. It was written to guide you through assembly, review safety considerations, and cover general operating procedures. It represents our latest effort to produce the best documentation possible.

The specifications, drawings, and photographs illustrated in this manual represent the Model G9956 as supplied when the manual was prepared. However, owing to Grizzly's policy of continuous improvement, changes may be made at any time with no obligation on the part of Grizzly. For your convenience, we always keep current Grizzly manuals available on our website at www.grizzly.com. Any updates to your machine will be reflected in these manuals as soon as they are complete.



Contact Info

If you have any comments or criticisms that you feel we should address in our next printing, please write to us at:

Grizzly Industrial, Inc.
% Technical Documentation
P.O. Box 2069
Bellingham, WA 98227

Most importantly, we stand behind our machines. We have excellent regional service departments at your disposal should the need arise.

If you have any service questions or parts requests, please call or write to us at the location listed below.

Grizzly Industrial, Inc
1203 Lycoming Mall Circle
Muncy, PA 17756
Phone: (570) 546-9663
Fax: (800) 438-5901
E-Mail: techsupport@grizzly.com
Web Site: <http://www.grizzly.com>



Machine Data

- 30 $\frac{1}{8}$ "L x 19 $\frac{7}{8}$ "W x 16 $\frac{3}{8}$ "H
- Weighs 73 lbs.
- Moves 1400 CFM of air
- $\frac{1}{3}$ HP Motor
- 5 fan speeds
- Programmable timer
- Remote control
- Filters down to 1 Micron



SECTION 3: CIRCUIT REQUIREMENTS

110V Operation

⚠ WARNING

Serious personal injury could occur if you connect the machine to the power source before you have completed the set up process. **DO NOT** connect the machine to the power source until instructed to do so.

Amperage Draw

The 1/3 HP motor on the Model G9956 will draw the following amps:

110V Motor Draw 3 Amps

Circuit Breaker Requirements

Install your machine on a dedicated circuit to reduce the possibility of tripping the circuit breaker. If the circuit breaker frequently trips, have the circuit inspected by a qualified electrician. Never use a larger circuit breaker than stated below.

Circuit Breaker..... 10 Amp, 1 Pole

Plug Type

The Model G9956 is supplied with a 5-15 plug, similar to **Figure 1**.

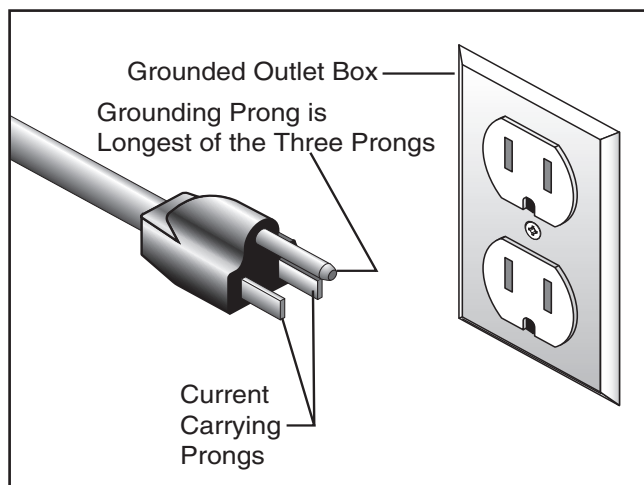
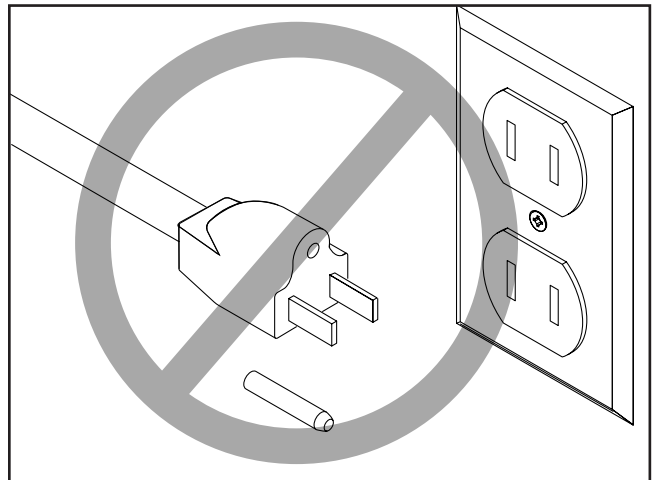


Figure 1. Typical type 5-15 plug and receptacle.

Grounding

In the event of an electrical short, grounding reduces the risk of electric shock by providing a path of least resistance to disperse electric current. This tool is equipped with a power cord that has a plug with an equipment-grounding prong. The outlet must be properly installed and grounded in accordance with all local codes and ordinances.



⚠ CAUTION

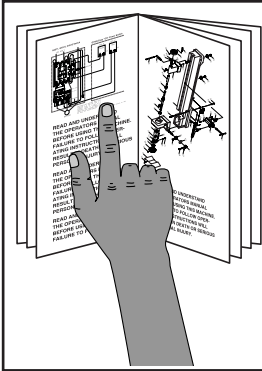
This machine must have a ground prong in the plug to help ensure that it is grounded. **DO NOT** remove ground prong from plug to fit into a two-pronged outlet! If the plug will not fit the outlet, have the proper outlet installed by a qualified electrician.

Extension Cords

- Make sure the cord is rated Standard Service (grade S) or better.
- The extension cord must also contain a ground wire and plug pin.
- Use at least a 16 gauge cord.
- **DO NOT** use a cord longer than 50 feet!

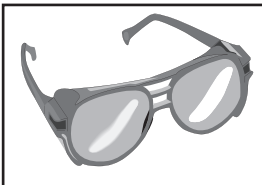


SECTION 4: SET UP



!WARNING

This machine presents serious injury hazards to untrained users. Read through this entire manual to become familiar with the controls and operations **BEFORE** starting the machine!



!WARNING

Wear safety glasses during the entire set up process!



!WARNING

The Model G9956 weighs 79 lbs. **DO NOT** over-exert yourself while unpacking or moving your machine—get assistance.

Unpacking

Your machine left our warehouse in a carefully packed box. If you discover the machine is damaged after you have signed for delivery, *please immediately call Customer Service at (570) 546-9663 for advice.*

Save the containers and all packing materials for possible inspection by the carrier or its agent. *Otherwise, filing a freight claim can be difficult.*

When you are completely satisfied with the condition of the shipment, you should inventory the equipment.



Inventory

After all the parts have been removed from the carton, you should have:

- A. Double Air Filter 1
- B. Remote Control 1
- C. Hardware Bag 1

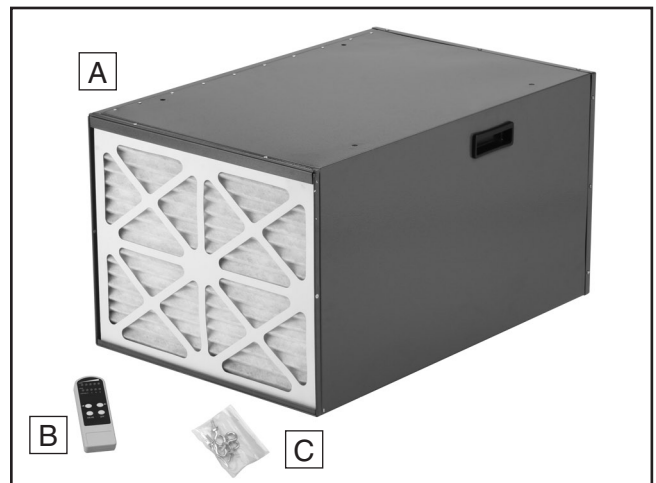


Figure 2. Package inventory.

Hardware Bag Inventory (use page 8 to identify hardware)

- Hex Nuts 1/4"-20 4
- Eye bolts..... 4

In the event that any non proprietary parts are missing (e.g. one or two bolts), we would be glad to replace them, or, for the sake of expediency, replacements can also be obtained at your local hardware store.



Site Planning

Site planning is an important step to maximize the effectiveness of the double air filter. Air circulation must be thought out and all obstructions in the air path considered.

The G9956 Double Air Filter is supplied with a pair of directional vents which allows the user to direct the flow of circulation. However, while the vents will optimize a good layout, as in **Figure 3**, they will have a limited effect when the double air filter is placed incorrectly in the room as in **Figure 4**. When placed too close to obstructions, the velocity of the air is lost and circulation

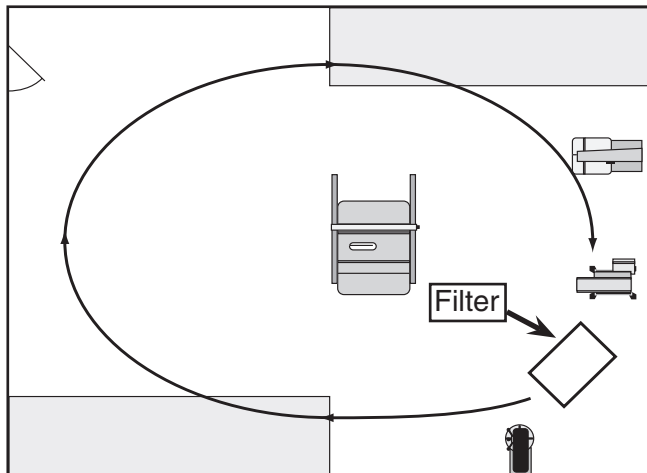


Figure 3. Good circulation. The air filter placement promotes circular air motion.

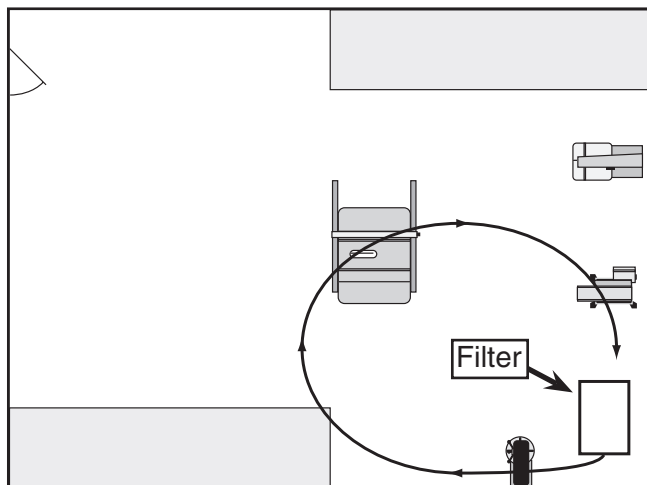


Figure 4. Poor circulation. Placed too close to the wall, the air circulation short cycles leaving much of the room unfiltered.

is diminished. The following is a list of things to keep in mind when determining the placement of the air filter:

- Study your shop layout to determine the best location for the double air filter. Air flow that is obstructed will cause a short cycle effect producing unsatisfactory results. There must be a clearance of at least 12" from any obstructions in front and back of the unit.
- Place the air filter in front of high dust producers like sanders or near areas where sanding will take place.
- Do not place the double air filter in the path of garage doors or where it may impede transport or movement of any other object.
- Place the unit in a location that provides easy access to turn on, clean and maintain.



Filter Capacity

The G9956 Heavy-Duty Double Air Filter is designed to recirculate the entire volume of air in a 20' x 20' x 8' room approximately 26 times in one hour. For the best filtering effect, the volume in a room should be recirculated at least 6-8 times every hour.

To calculate the recirculating rate for a given volume:

Step 1. Calculate, how long it takes to circulate all the volume of air in a room with the double air filter; where W = Width, L = Length and H = Height of your room, in feet. The rate of air movement for the air filter is 1400 cubic feet per minute.

$$\frac{W' \times L' \times H'}{1400} = \text{Minutes for circulating 1 time}$$

Step 2. Calculate how many times per hour the volume is recirculated through the double air filter by dividing 60 minutes by the amount of time it takes to circulate the volume once. The result is listed as times per hour.

$$\text{Step 1: } \frac{20' \times 20' \times 8'}{1400} = \frac{5000}{1400} = 2.28 \text{ Minutes}$$

$$\text{Step 2: } \frac{60}{2.28} = 26.3 \text{ Times per Hour}$$



Mounting Preparation

It is very important that the double air filter is supported properly. Please use these guidelines when preparing to mount the unit.

- For the sake of clarity, the surface where the eyebolts attach will be called the top throughout the manual.
- Make sure that an electrical outlet with a properly grounded receptacle is available at your location of choice.

- The double air filter must be supported by joists when hanging. These joists should be capable of supporting at least 150 lbs. DO NOT attach the double air filter to sheet rock, press board or paneling. These cannot support the filter and it may fall.
- To avoid hitting your head on the double air filter, make sure there is enough clearance between the unit and the ground (at least seven feet). This is especially important in a basement. If possible, position the air filter in an area that has little or no foot traffic but still offers easy access to the switch and filters.



Eye Bolts

Components and Hardware Needed	Qty
Eye bolts	4
Hex Nuts 1/4"-20	4

Tools Needed	
Wrench 12mm	1

To attach the eye bolts:

1. If the nuts are not already on the eye bolts, thread one onto each eye.
2. Thread one eye bolt into each hole on the top of the double air filter. Use as much of the available thread as possible.
3. Tighten the nuts on each eye bolt until the eyes will not move by hand. DO NOT over tighten.



Hanging the Filter

Hardware Needed (not included)	Qty
Chain, rated 150 lbs. or higher.....	varies
Connecting link.....	8
Lag eye bolts $\frac{5}{16}$ " x 3" or 4".....	4

Tools Needed

Drill	1
Drill bit $\frac{1}{4}$ ".....	1



Follow these steps and refer to **Figure 5** when hanging the double air filter.

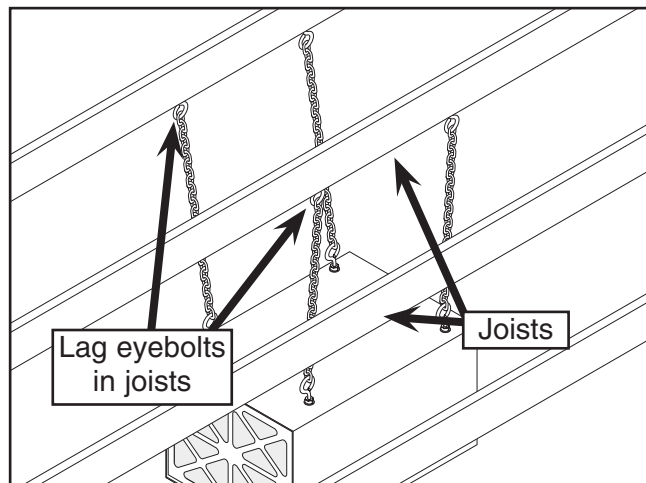


Figure 5. Hanging from the joists.

1. If the joists are covered by sheet rock, press board, paneling or other covering, use a stud finder to locate them, and mark their centers.
2. Pre-drill $\frac{1}{4}$ " pilot holes into the marks on the joists. This will make threading the lag eyebolts much easier and reduce the risk of splitting the joists.
3. Thread the eye bolts into the pilot holes. Be sure to thread the eye bolts at least $1\frac{1}{2}$ " into the joists.
4. Measure the desired length of your chains from the eyebolts. Remember to account for the connecting links and eyebolts on the double air filter.
5. Cut the chain to equal lengths and attach a connecting link to each end.
6. Secure a length of chain to each mounting eye.
7. **GET SOME HELP!** With at least one other person supporting the weight of the double air filter, connect the chains to the lag eye bolts.

NOTE—DO NOT use hooks in place of lag eye bolts. If the double air filter is bumped it could fall.



SECTION 5: OPERATIONS

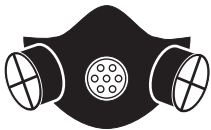
! WARNING

Operating this equipment creates the potential for flying debris to cause eye injury. Always wear safety glasses when operating equipment. Everyday glasses or reading glasses only have impact resistant lenses, they are not safety glasses. Be certain the safety glasses you wear meet the appropriate standards of the American National Standards Institute (ANSI).



! CAUTION

Operations that generate large amounts of any kind of dust may warrant the use of a respirator even though the air filter is running. The double air filter is not a substitute for a respirator!



Operations

Operating the G9956 Double Air Filter can be done in two ways. Refer to **Figure 6** while following the instructions below.

For manual *ON/OFF* use:

1. Connect power to the double air filter.
2. Set the main (red) switch to “No Remote Control.”
3. Pull the switch chain to turn the fan *ON* and *OFF*.

The remote control will not work when the main switch is in this position.



Figure 6. The air filter control panel.

For remote control *ON/OFF* use:

1. Connect power to the double air filter.
2. Set the main (red) switch to “Remote Control.”
3. Push the *ON/HR* button on the remote control to turn it on. Push *OFF* to turn it off.

If the fan does not start when you turn the double air filter *ON*, turn the switch *OFF*, disconnect the power and follow these steps:

- Check the breaker/reset switch located next to the start switch and reset if needed.
- Check to make sure the outlet you have plugged the filter into is in working condition. Reset its breaker if needed.
- If you are using a remote control system with this unit, double check main switch setting.
- Check batteries in the remote.

If the double air filter will not operate after the following steps, please call customer support lines for more help.



Speeds and Timer

You can adjust the fan speed and the length of time your double air filter runs by programming it with the included remote controller. To toggle between fan speed and timer control functions, press the *ON/HR* button.

To set the fan speed:

1. Press the *ON/HR* button once. The fan should start to run.
—If one or more of the lower lights comes on, press the *ON/HR* again.
2. Increase the fan speed by pressing the increase button designated by the right hand pointer.
3. Decrease the fan speed by pressing the decrease button designated by the left hand pointer.

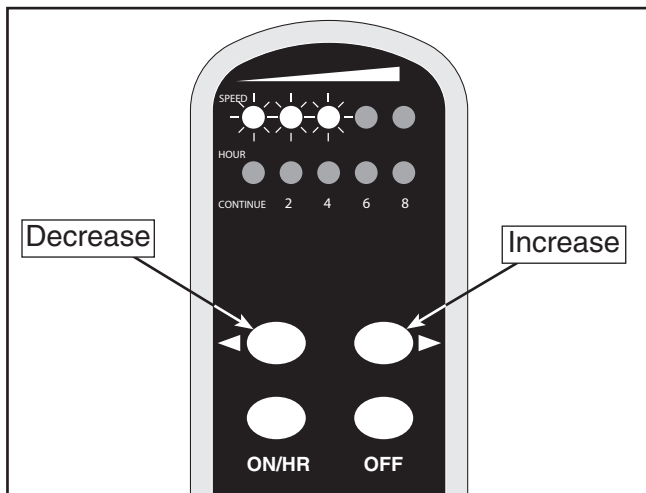


Figure 7. Lights indicate a fan speed of 3.

To set the fan timer:

1. Press the *ON/HR* button after setting the fan speed.
—If some or all of the lights in the upper row come on, press the *ON/HR* button again.
2. Increase the amount of time the fan runs before automatically shutting off by pressing the increase button.
—Each time this button is pressed, the amount of time increases by two hours, up to a maximum 8 hour cycle.
3. Decrease the amount of time the fan runs before automatically shutting off by pressing the decrease button.

NOTE—When the automatic shut off feature is not going to be used, press the decrease button until the light over “continue” is illuminated.

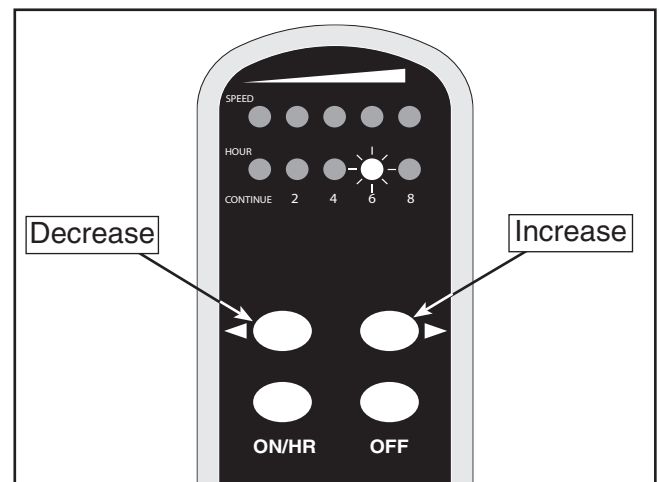


Figure 8. Light indicates time set for 6 hours of operation.



SECTION 6: MAINTENANCE

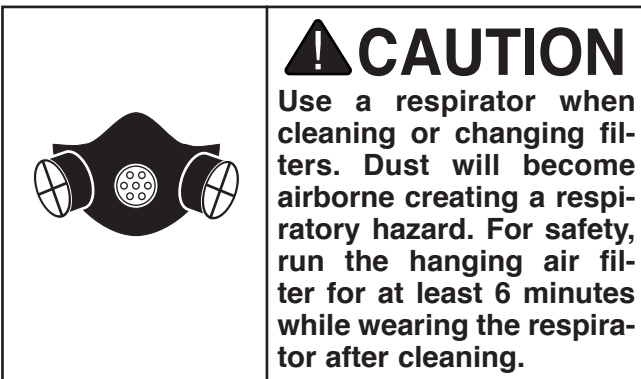
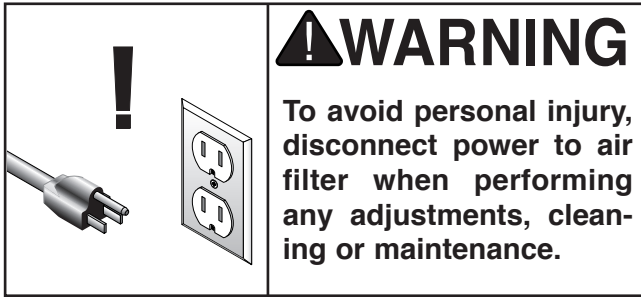


Figure 9. Lifting the primary filter so the bottom edge clears retaining rim.

Cleaning the Filters

In order to maintain optimal operation, the filters in the double air filter should be checked, cleaned and/or replaced regularly depending on usage. Checking the filters once a week in a small home shop is a good habit. Checking them once a day during heavy use is important. Always wear a respirator when checking the filters.

To check, clean or replace the filters:

1. **Disconnect power to the double air filter.**
2. Lift the primary filter so it can clear the retaining rim; remove and examine carefully and replace as needed. **Figure 9**
3. Remove the secondary filter, place it inside a trash bag, and gently shake the dust from the filter.
4. The secondary filter can be washed with water to remove the last of the dust and help maximize its filtering effect. **DO NOT** use compressed air to clean the filter as it will be damaged and lose its filtering capabilities.
5. Be sure the secondary filter is completely dry before installing it into the double air filter.
6. Install a new primary air filter over the secondary filter.

During regular use, the secondary filter can be cleaned several times before it needs to be replaced. It is important to look for holes in the filter that would reduce the filtering effect. Please see the current Grizzly catalog for replacement information.



SECTION 7: REFERENCE INFO

The following pages contain the parts list, parts breakdown diagram, wiring diagram, and the Warranty/Return information for the Model G9956.

If you have any comments regarding this manual, please write to Grizzly at the address below:

Grizzly Industrial, Inc.
c/o Technical Documentation
P.O. Box 2069
Bellingham, WA 98227-2069

We recommend you keep a copy of our current catalog for complete information regarding Grizzly's warranty and return policy. If you need additional technical information, general assistance or replacement parts relating to this machine, please contact the Service Department at the location listed below:

Grizzly Industrial, Inc.
1203 Lycoming Mall Circle
Muncy, PA 17756
Phone: (570) 546-9663
Fax: (800) 438-5901
E-Mail: techsupport@grizzly.com
Web Site: <http://www.grizzly.com>.



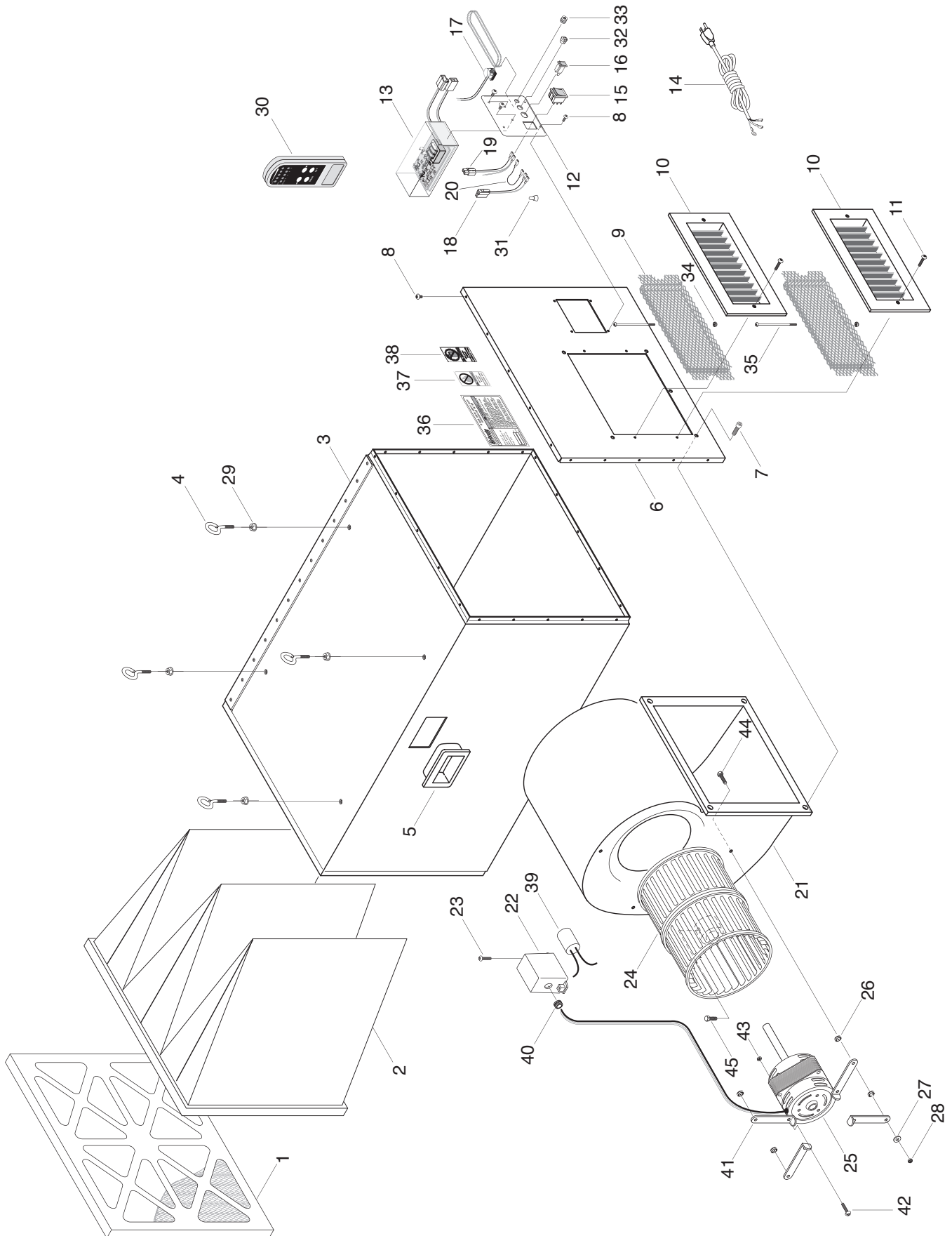
Aftermarket Accessories

Grizzly carries a complete selection of fine accessories for all of its equipment. Below is a list of useful replacement filters and accessories.

- H2451 1 Micron Bag. Collects dust down to 1 micron, cleans easily and washes out with water.
- H2452 Washable Prefilter. Easy-to-replace filter for your double air filter!



G9956 Parts Breakdown



-15- Heavy-Duty Hanging Air Filter

G9956 Heavy-Duty Double Air Filter

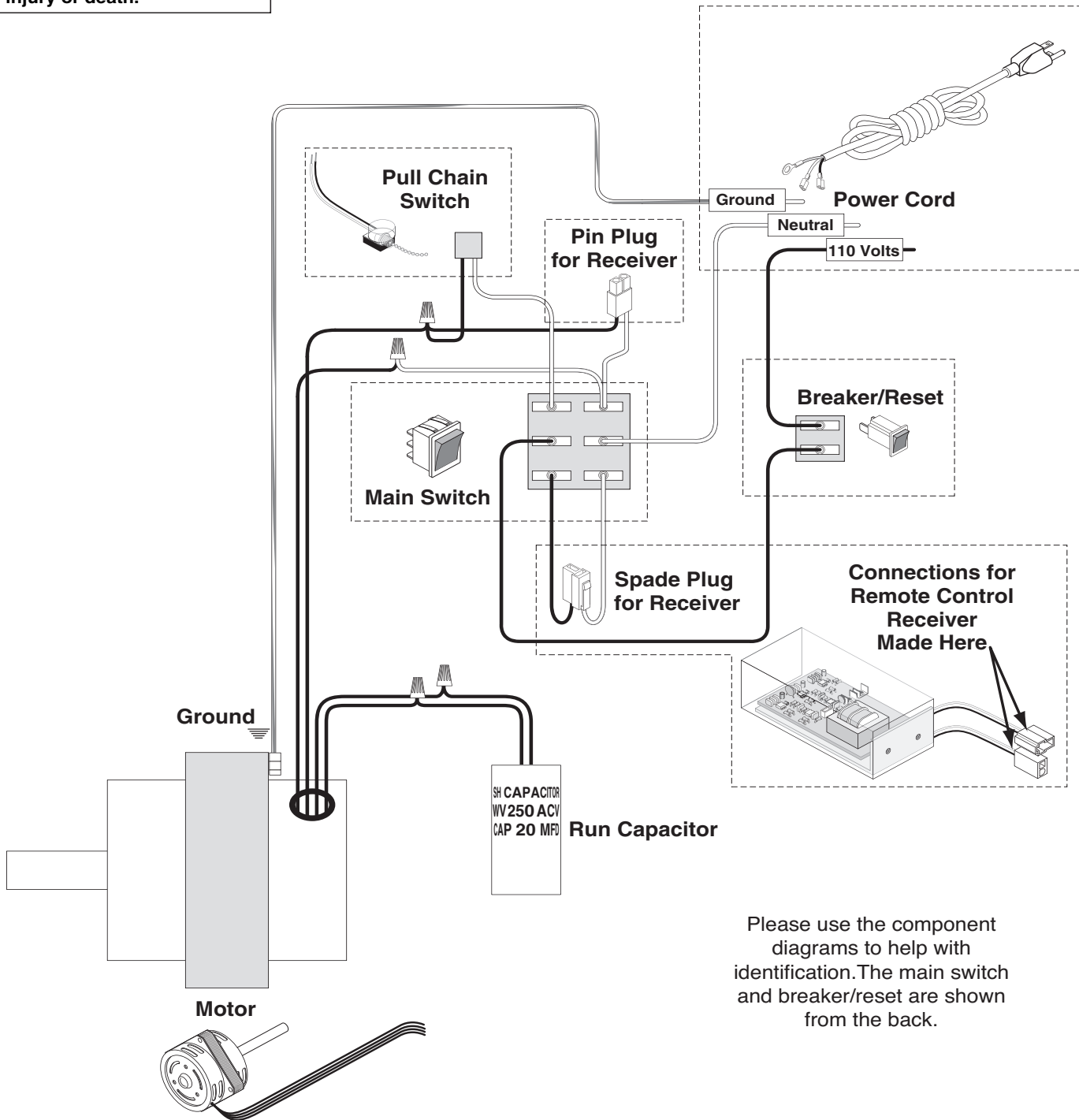
G9956 Parts List

REF	PART #	DESCRIPTION
1	H2452	REAR FILTER
2	H2451	INNER FILTER
3	P9956003	BODY
4	P9956004	EYE BOLT 1/4-20 x 7/8
5	P9956005	HANDLE
6	P9956006	OUTLET COVER
7	PSB30	CAP SCREW 5/16-18 x 1/2
8	PS07M	PHLP HD SCR M4-.7 x 8
9	P9956009	SAFETY SCREEN
10	P9956010	OUTLET PORT
11	PS01	PHLP HD SCR 10-24 x 1/2
12	P9956012	SWITCH COVER
13	P9956013	REMOTE RECEIVER
14	PWRCRD110L	PWR CORD 110V, LONG W/PLUG
15	P9956015	SWITCH
16	P9956016	CIRCUIT BREAKER 3AMP
17	P9956017	CHAIN SWITCH
18	P9956018	SWITCH CONNECTOR
19	P9956019	CIRCUIT BREAKER CONNECTOR
20	P9956020	JUMP CONNECTOR
21	P9956021	FAN HOUSING
22	P9956022	CONDENSER COVER
23	PS08	PHLP HD SCR 10-24 x 3/4
24	P9956024	SQUIRREL CAGE
25	P9956025	MOTOR 1/3 HP
26	P9956026	RUBBER GROMMET
27	PW06	FLAT WASHER 1/4
28	PLN02	LOCK NUT 1/4-20
29	PFN01	FLANGE NUT 1/4-20
30	P9956030	REMOTE CONTROL
31	P9956031	C4 CONNECTOR 16-24 GAUGE
32	P9956032	STRAIN RELIEF
33	P9956033	ROUND NUT FOR #17
34	PLN01M	LOCK NUT M4-.7
35	P9956035	PHLP HD SCR M4-.7 x 100
36	P9956036	MACHINE ID/WARNING LABEL
37	P9956037	SPARKS/FLAMES LABEL
38	P9956038	FUMES WARNING LABEL
39	PC020A	CAPACITOR 20 MFD 250 V
40	P9956040	RUBBER GROMMET
41	P9956041	MOTOR BRACKET
42	P9956042	PHLP HD SCR M5-.8 x 50
43	PLN02M	LOCK NUT M5-.8
44	PB31	HEX BOLT 1/4-20 x 1
45	PB18M	HEX BOLT M6-1 x 15

⚠ DANGER

Disconnect power from machine before performing any electrical service. Failure to do this will result in a shock hazard leading to injury or death.

G9956 Wire Diagram



Please use the component diagrams to help with identification. The main switch and breaker/reset are shown from the back.

Warranty and Returns

Grizzly Industrial, Inc. warrants every product it sells for a period of **1 year** to the original purchaser from the date of purchase. This warranty does not apply to defects due directly or indirectly to misuse, abuse, negligence, accidents, repairs or alterations or lack of maintenance. This is Grizzly's sole written warranty and any and all warranties that may be implied by law, including any merchantability or fitness, for any particular purpose, are hereby limited to the duration of this written warranty. We do not warrant or represent that the merchandise complies with the provisions of any law or acts unless the manufacturer so warrants. In no event shall Grizzly's liability under this warranty exceed the purchase price paid for the product and any legal actions brought against Grizzly shall be tried in the State of Washington, County of Whatcom.

We shall in no event be liable for death, injuries to persons or property or for incidental, contingent, special, or consequential damages arising from the use of our products.

To take advantage of this warranty, contact us by mail or phone and give us all the details. We will then issue you a "Return Number," which must be clearly posted on the outside as well as the inside of the carton. We will not accept any item back without this number. Proof of purchase must accompany the merchandise.

The manufacturers reserve the right to change specifications at any time because they constantly strive to achieve better quality equipment. We make every effort to ensure that our products meet high quality and durability standards and we hope you never need to use this warranty.

Please feel free to write or call us if you have any questions about the machine or the manual.

Thank you again for your business and continued support. We hope to serve you again soon.

WARRANTY CARD

Name _____
 Street _____
 City _____ State _____ Zip _____
 Phone Number _____ E-Mail _____ FAX _____
MODEL: G9956 DOUBLE AIR FILTER Serial # _____ Order _____

The following information is given on a voluntary basis. It will be used for marketing purposes to help us develop better products and services. Of course, all information is strictly confidential.

CUT ALONG DOTTED LINE

<p>1. How did you learn about us? <input type="checkbox"/> Advertisement <input type="checkbox"/> Friend <input type="checkbox"/> Catalog <input type="checkbox"/> Card Deck <input type="checkbox"/> World Wide Web <input type="checkbox"/> Other _____</p> <p>2. Which of the following magazines do you subscribe to. <input type="checkbox"/> American Woodworker <input type="checkbox"/> Practical Homeowner <input type="checkbox"/> Cabinetmaker <input type="checkbox"/> Shop Notes <input type="checkbox"/> Family Handyman <input type="checkbox"/> Today's Homeowner <input type="checkbox"/> Fine Homebuilding <input type="checkbox"/> WOOD <input type="checkbox"/> Fine Woodworking <input type="checkbox"/> Wooden Boat <input type="checkbox"/> Home Handyman <input type="checkbox"/> Woodshop News <input type="checkbox"/> Journal of Light Construction <input type="checkbox"/> Woodsmith <input type="checkbox"/> Old House Journal <input type="checkbox"/> Woodwork <input type="checkbox"/> Popular Mechanics <input type="checkbox"/> Woodworker <input type="checkbox"/> Popular Science <input type="checkbox"/> Woodworker's Journal <input type="checkbox"/> Popular Woodworking <input type="checkbox"/> Workbench <input type="checkbox"/> Other _____</p> <p>3. Which of the following woodworking/remodeling shows do you watch? <input type="checkbox"/> Backyard America <input type="checkbox"/> The New Yankee Workshop <input type="checkbox"/> Home Time <input type="checkbox"/> This Old House <input type="checkbox"/> The American Woodworker <input type="checkbox"/> Woodwright's Shop <input type="checkbox"/> Other _____</p> <p>4. What is your annual household income? <input type="checkbox"/> \$20,000-\$29,999 <input type="checkbox"/> \$60,000-\$69,999 <input type="checkbox"/> \$30,000-\$39,999 <input type="checkbox"/> \$70,000-\$79,999 <input type="checkbox"/> \$40,000-\$49,999 <input type="checkbox"/> \$80,000-\$89,999 <input type="checkbox"/> \$50,000-\$59,999 <input type="checkbox"/> \$90,000 +</p> <p>5. What is your age group? <input type="checkbox"/> 20-29 <input type="checkbox"/> 50-59 <input type="checkbox"/> 30-39 <input type="checkbox"/> 60-69 <input type="checkbox"/> 40-49 <input type="checkbox"/> 70 +</p> <p>6. How long have you been a woodworker? <input type="checkbox"/> 0 - 2 Years <input type="checkbox"/> 8 - 20 Years <input type="checkbox"/> 2 - 8 Years <input type="checkbox"/> 20+ Years</p> <p>7. How would you rank your woodworking skills? <input type="checkbox"/> Simple <input type="checkbox"/> Advanced <input type="checkbox"/> Intermediate <input type="checkbox"/> Master Craftsman</p> <p>8. What stationary woodworking tools do you own? Check all that apply. <input type="checkbox"/> Air Compressor <input type="checkbox"/> Panel Saw <input type="checkbox"/> Band Saw <input type="checkbox"/> Planer <input type="checkbox"/> Drill Press <input type="checkbox"/> Power Feeder <input type="checkbox"/> Drum Sander <input type="checkbox"/> Radial Arm Saw <input type="checkbox"/> Dust Collector <input type="checkbox"/> Shaper <input type="checkbox"/> Horizontal Boring Machine <input type="checkbox"/> Spindle Sander <input type="checkbox"/> Jointer <input type="checkbox"/> Table Saw <input type="checkbox"/> Lathe <input type="checkbox"/> Vacuum Veneer Press <input type="checkbox"/> Mortiser <input type="checkbox"/> Wide Belt Sander <input type="checkbox"/> Other _____</p>	<p>9. How many of your woodworking machines are Grizzly? _____</p> <p>10. Which benchtop tools do you own? Check all that apply. <input type="checkbox"/> 1" x 42" Belt Sander <input type="checkbox"/> 6" - 8" Grinder <input type="checkbox"/> 5" - 8" Drill Press <input type="checkbox"/> Mini Lathe <input type="checkbox"/> 8" Table Saw <input type="checkbox"/> 10" - 12" Thickness Planer <input type="checkbox"/> 8" - 10" Bandsaw <input type="checkbox"/> Scroll Saw <input type="checkbox"/> Disc / Belt Sander <input type="checkbox"/> Spindle / Belt Sander <input type="checkbox"/> Mini Jointer <input type="checkbox"/> Other _____</p> <p>11. How many of the machines checked above are Grizzly? _____</p> <p>12. Which portable, hand held power tools do you own? Check all that apply. _____ _____ _____</p> <p>13. What machines and/or supplies would you like Grizzly Industrial to carry? _____ _____ _____</p> <p>14. What new accessories would you like Grizzly Industrial to carry? <input type="checkbox"/> Builders Hardware <input type="checkbox"/> Hand Tools <input type="checkbox"/> Fasteners <input type="checkbox"/> Wood Components <input type="checkbox"/> Other _____</p> <p>15. What other companies do you purchase your tools and supplies from? _____ _____</p> <p>16. Do you think your purchase represents good value? <input type="checkbox"/> Yes <input type="checkbox"/> No</p> <p>17. Would you recommend Grizzly Industrial to a friend? <input type="checkbox"/> Yes <input type="checkbox"/> No</p> <p>18. Would you allow us to use your name as a reference for Grizzly customers in your area? Note: We never use names more than three times. <input type="checkbox"/> Yes <input type="checkbox"/> No</p> <p>19. Comments: _____ _____ _____ _____ _____</p>
--	---

FOLD ALONG DOTTED LINE



Place
Stamp
Here



GRIZZLY INDUSTRIAL, INC.
P.O. BOX 2069
BELLINGHAM, WA 98227-2069



FOLD ALONG DOTTED LINE

Send a Grizzly Catalog to a friend:

Name _____
Street _____
City _____ State _____ Zip _____

TAPE ALONG EDGES--PLEASE DO NOT STAPLE

grizzly.com

TOOL WEBSITE

Buy Direct and Save with Grizzly® – Trusted, Proven and a Great Value!

*Visit Our Website Today And Discover Why
Grizzly® Is The Industry Leader!*

- SECURE ORDERING
- ORDERS SHIPPED WITHIN 24 HOURS
- E-MAIL RESPONSE WITHIN ONE HOUR

-OR-

Call Today For A **FREE**

Full Color Catalog

1-800-523-4777



Free Manuals Download Website

<http://myh66.com>

<http://usermanuals.us>

<http://www.somanuals.com>

<http://www.4manuals.cc>

<http://www.manual-lib.com>

<http://www.404manual.com>

<http://www.luxmanual.com>

<http://aubethermostatmanual.com>

Golf course search by state

<http://golfingnear.com>

Email search by domain

<http://emailbydomain.com>

Auto manuals search

<http://auto.somanuals.com>

TV manuals search

<http://tv.somanuals.com>