

EMULEX[®]

We network storage

Combined Boot Version 5.01a0

for Emulex HBAs

User Manual

Copyright© 2005 Emulex Corporation. All rights reserved worldwide. No part of this document may be reproduced by any means nor translated to any electronic medium without the written consent of Emulex Corporation.

Information furnished by Emulex Corporation is believed to be accurate and reliable. However, no responsibility is assumed by Emulex Corporation for its use; or for any infringements of patents or other rights of third parties which may result from its use. No license is granted by implication or otherwise under any patent or patent rights of Emulex Corporation.

Emulex and LightPulse are registered trademarks, and AutoPilot Installer, AutoPilot Manager, BlockGuard, FibreSpy, HBAnyware, InSpeed, MultiPulse and SBOD are trademarks, of Emulex Corporation. All other brand or product names referenced herein are trademarks or registered trademarks of their respective companies or organizations.

Emulex provides this manual "as is" without any warranty of any kind, either expressed or implied, including but not limited to the implied warranties of merchantability or fitness for a particular purpose. Emulex Corporation may make improvements and changes to the product described in this manual at any time and without any notice. Emulex Corporation assumes no responsibility for its use, nor for any infringements of patents or other rights of third parties that may result. Periodic changes are made to information contained herein; although these changes will be incorporated into new editions of this manual, Emulex Corporation disclaims any undertaking to give notice of such changes.

Introduction.....	1
Compatibility.....	1
Things to Know Before You Download	1
Known Issues.....	1
Files Included in This Release.....	1
Loading x86 BootBIOS	2
Load x86 BootBIOS Using lputilnt	2
Load x86 BootBIOS Using elxcfg	3
Load x86 BootBIOS Using lputil	4
Loading x86 BootBIOS Using lp6dutil.....	4
Enable x86 BootBIOS on HBAs Using the BIOS Utility	6
Configuring x86 BootBIOS.....	8
Introduction	8
Start the BIOS Utility.....	8
Adapter Configuration Menu Summaries.....	9
Change the Default AL_PA.....	10
Change the PLOGI Retry Timer	11
Change Topology	11
Enable/Disable the Spinup Delay	12
Set Auto Scan	13
Enable/Disable EDD 3.0.....	14
Enable/Disable the Start Unit Command	14
Enable/Disable the Environment Variable.....	15
Enable/Disable Auto Sector Format Select.....	15
Configure Boot Devices.....	16
Install Windows 2000 Server on a Fibre Channel Disk	17
Use Multi-Boot BIOS	18
Troubleshooting x86 BootBIOS	19
The x86 BootBIOS Message Does Not Appear on Bootup.....	19
Retry This Adapter Message	19
The .prg File Fails During Downloading.....	19
Loading OpenBoot.....	20
Load OpenBoot using lputil	20
Configuring OpenBoot	21
Creating a Fibre Channel Remote Boot Disk.....	21
Making a Bootable System Disk.....	23
Viewing OpenBoot Commands.....	26
Troubleshooting OpenBoot.....	27
The System Cannot mount or fsck /etc/vfstab Fibre Channel Boot Disk.....	27
A Loaded File Is Not Executable	27
The System Hangs or Reboots After Displaying Driver Information.....	27
Fibre Channel Disk Is Not Found	27

Introduction

Combined Boot contains two types of boot code: x86 BootBIOS for x86 systems, and OpenBoot for SPARC Peripheral Component Interconnect (PCI) and AIX systems. Combined Boot determines your system platform (x86 or SPARC) and automatically downloads the proper boot code image to the host bus adapter (HBA).

x86 BootBIOS works with the existing basic input output system (BIOS) on x86 systems. x86 BootBIOS allows you to designate a Fibre Channel drive as the boot drive.

OpenBoot is a set of FCode instructions in the HBA flash read-only memory (ROM) that allows you to designate a Fibre Channel hard drive as the boot drive. OpenBoot works with the existing system BIOS on SPARC PCI systems.

Compatibility

- Combined Boot is compatible with the following Emulex[®] Fibre Channel PCI HBAs:
 - LP9402DC, LP9002DC, LP9002L and LP9000 (minimum firmware version 3.82a1)
 - LP8000 and LP8000DC (minimum firmware version 2.81)

Things to Know Before You Download

- Combined Boot is a complete single boot image. Therefore, the HBA utility software enables or disables two types of boot code (x86 BootBIOS and OpenBoot).
- This download assumes that there is already a local boot disk.
- As a measure of protection, ensure that critical files on your local boot disk are backed up.
- The .PRG files included in this release contain only the boot code overlay (no firmware).

Known Issues

The following issue has been reported at the time of publication.

- None at this time.

Files Included in This Release

This kit includes the following files:

File Name	Description
readme.txt	Release notes for Combined Boot version 5.01a0
cc501a0.prg	LP9402DC, LP9002DC, LP9002L and LP9000 Combined Boot image
dc501a0.prg	LP8000 and LP8000DC Combined Boot image

Loading x86 BootBIOS

Before you update x86 BootBIOS, decide which utility to use. Emulex offers a variety of utilities that you can use to update x86 BootBIOS. The utilities that you can use depend on your operating system and, in some cases, driver:

Operating System	lputilnt*	elxcfg**	lputil	lp6dutil***
Windows	X	X		X
Linux			X	X
Solaris (x86 system)			X	X
* SCSIport Miniport and Storport Miniport drivers only ** FC Port driver only *** Requires DOS (will not run in a DOS window)				

After you decide which utility to use, see the appropriate update procedures:

- lputilnt: See *Load x86 BootBIOS Using lputilnt* on page 2.
- elxcfg: See *Load x86 BootBIOS Using elxcfg* on page 3.
- lputil: See *Load x86 BootBIOS Using lputil* on page 4.
- lp6dutil : See *Loading x86 BootBIOS Using lp6dutil* on page 4.

Load x86 BootBIOS Using lputilnt

Prerequisites

- One of the following drivers is installed and loaded properly:
 - SCSIport Miniport driver for Windows Server 2003, Windows 2000 Server or Windows NT.
 - Storport Miniport driver for Windows Server 2003.
- lputilnt is installed properly.
- The x86 BootBIOS file has been downloaded from the Emulex Web site and extracted to a folder on your local hard drive.
- The system is in a state in which this type of maintenance can be performed:
 - I/O activity on the bus has been quieted.
 - Cluster software, or any other software that relies on the HBA to be available, has been stopped or paused.

To load x86 BootBIOS using lputilnt:

1. Start lputilnt: Click **Start, Programs, Emulex** and **lputilnt**.
2. Select the desired HBA.
3. Select **Firmware Maintenance** from the Category list.
4. Click **Download** and locate the new x86 BootBIOS file.
5. Click **Open**. The new boot code is transferred to flash ROM.

6. Click **Boot Bios Firmware** (Figure 1).

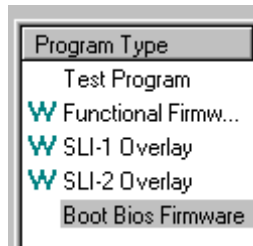


Figure 1: Iputilnt, Program Type list.

7. If the **Disable** button appears, the boot code is already enabled; skip to step 9. Otherwise, continue with step 8.
8. Click **Enable**; the **Enable** button changes to **Disable** and the letter W appears to the left of "Boot Bios Firmware" in the Program Type list. This indicates that x86 BootBIOS is in use.
9. Continue by enabling x86 BootBIOS on HBAs (page 6).

Load x86 BootBIOS Using elxcfg

Prerequisites

- The FC Port driver for Windows Server 2003, Windows 2000 Server or Windows NT is installed.
- elxcfg is installed properly.
- The x86 BootBIOS file has been downloaded from the Emulex Web site and extracted to a folder on your local hard drive.
- The system is in a state in which this type of maintenance can be performed:
 - I/O activity on the bus has been quieted.
 - Cluster software, or any other software that relies on the HBA to be available, has been stopped or paused.

To load x86 BootBIOS using elxcfg:

1. Start elxcfg: Click **Start, Programs, Emulex** and **elxcfg**.
2. Locate and select an HBA from the Available Adapters list (Figure 2).

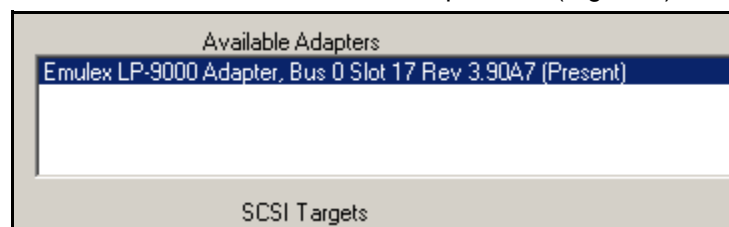


Figure 2: elxcfg Utility, Available Adapters List

3. Select **Download Firmware** from the Tools menu. A browse window is displayed.
4. Browse to the folder into which you extracted the x86 BootBIOS file and select the file.
5. Click **Open**. The file is downloaded, and a confirmation window is displayed.
6. Click **OK** to close the confirmation window.
7. Enable the x86 BootBIOS Bootup Message Using lp6dutil, if necessary (page 4).
8. Continue by enabling x86 BootBIOS on HBAs (page 6).

Load x86 BootBIOS Using lputil

Prerequisites

- The Emulex driver for Linux or Solaris is installed and loaded properly.
- The x86 BootBIOS file has been downloaded from the Emulex Web site and extracted to a directory on your local hard drive.
- lputil is installed properly.

To load x86 BootBIOS using lputil:

1. Start lputil by entering the complete path. The path in the example reflects the default installation path. If the installation path was modified, adjust the command appropriately.

```
/usr/sbin/lpfc/lputil
```
2. From the Main menu, enter **3**, Firmware Maintenance.
3. From the list that appears, choose the HBA onto which you want to load x86 BootBIOS.
4. Enter **1**, Load Firmware Image.
5. Enter the full path to the remote boot image file. The new boot code is transferred to flash ROM.
6. From the Firmware Maintenance menu, press **6**, Boot BIOS Maintenance.
7. Press **1**, Enable Boot BIOS, to enable the Boot message. (If item 1 is Disable Boot BIOS, the BIOS message is already enabled.)
8. Continue by enabling x86 BootBIOS on HBAs (page 6).

Loading x86 BootBIOS Using lp6dutil

Prerequisites

- The x86 BootBIOS file has been downloaded from the Emulex Web site and extracted to a directory on your local hard drive.

All lp6dutil tasks can be performed using the graphical user interface (GUI) screen menus. All screens require navigation and selection using the keyboard.

Note: You cannot start lp6dutil at the screen's command prompt.

To load x86 BootBIOS using lp6dutil:

1. Start lp6dutil:
 - a. Boot up your system with DOS.
 - b. From the directory where the lp6dutil.exe file resides, enter the following command:

```
lp6dutil
```
2. Press and hold down the < Alt> key and press **L**. The flash menu is displayed.



Figure 3: lp6dutil, Flash Menu

3. Press **D**. The Download Image window is displayed.

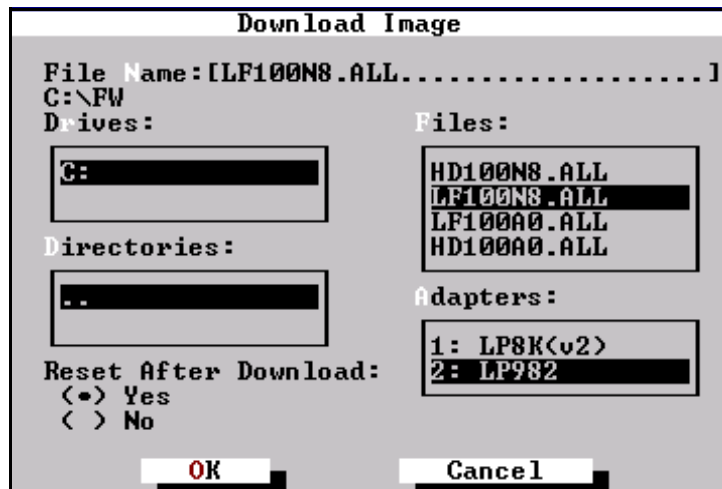


Figure 4: Ip6dutil, Download Image Window

4. Specify the location of the image file and the adapter to be updated.
5. Specify the Reset After Download setting.
 - Defaults to Yes. If you are updating a single file to one HBA, keep the default setting.
 - If you are updating several HBAs or several files to one HBA, select No.
6. Tab to the **OK** button and press <Enter>. The screen closes and the load process begins. Various steps of the download process are displayed along with the results of the download (success or error).
7. Press and hold down the <Alt> key and press **L**. The flash menu is displayed (Figure 3).
8. Press **B**. The Change Boot BIOS State window is displayed. This window is used to change the x86 BootBIOS state for an adapter.

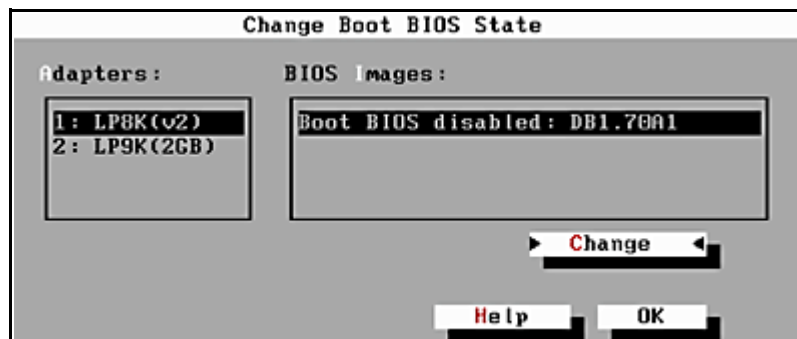


Figure 5: Ip6dutil, Change Boot BIOS State Window - Disabled BootBIOS Message

9. Highlight the HBA in the Adapters list.
10. Highlight the x86 BootBIOS image in the BIOS Images list.
11. Tab to **Change** and press <Enter>. The BootBIOS message is enabled for the selected HBA.
12. Tab to **OK** and press <Enter> to close the window.
13. Continue by enabling x86 BootBIOS on HBAs (page 6).

Enable x86 BootBIOS on HBAs Using the BIOS Utility

To use any of its features, x86 BootBIOS must be enabled on at least one installed HBA.

Prerequisites

- x86 BootBIOS is loaded on the HBA.
- The BIOS message is enabled.

To enable BootBIOS on the HBA:

1. Boot the system.
2. Press <Alt E> immediately (within five seconds) when the x86 BootBIOS message is displayed to start the BIOS utility. A menu displays a list of HBAs (Figure 6).

```
Emulex Light Pulse BIOS Utility, SB1.70a1
Copyright 2005 Emulex Corp.

Emulex Adapters in the System:

1. LP 9000 PCI Bus #:00 PCI Device #:0A
2. LP 9000 PCI Bus #:00 PCI Device #:12
3. LP 9000 PCI Bus #:00 PCI Device #:0C
4. LP 9000 PCI Bus #:00 PCI Device #:23

Enter a Selection:
Enter <x> to Exit
```

Figure 6: BIOS Utility, HBA Listing

3. Select the HBA by entering the appropriate number.
4. The main configuration menu is displayed (Figure 7).

```
Adapter 1: PCI Bus #:00 PCI Device #:0A

LP9000: I/O Base: 6600 Firmware Version: C93.90A7
Port Name: 10000000 C928274A Node Name: 20000000 C928274A
Topology: Auto Topology: Loop first (Default)

1. Configure Boot Devices
2. Configure This Adapter's Parameters

Enter a Selection:

Enter <x> to Exit <d> to Default Values <Esc> to Previous Menu
```

Figure 7: BIOS Utility, Main Configuration Menu

5. Press **2** to configure the HBA. The adapter configuration menu is displayed (Figure 8).

```
Adapter 1: PCI Bus #:00 PCI Device #:0A

LP9000: I/O Base:6600 Firmware Version: CS3.90A7
Port Name: 10000000 C928274A Node Name: 20000000 C928274A
Topology: FC_AL

1. Enable or Disable BIOS
2. Change Default ALPA of this adapter
3. Change PLOGI Retry Timer (+Advanced Option+)
4. Topology Selection (+Advanced Option+)
5. Enable or Disable Spinup delay (+Advanced Option+)
6. Auto Scan Setting (+Advanced Option+)
7. Enable or Disable ED D 3.0 (+Advanced Option+)
8. Enable or Disable Start Unit Command (+Advanced Option+)
9. Enable or Disable Environment Variable (+Advanced Option+)
A. Auto Sector Format Select (+For MSA1000 Array Use Only+)

Enter a Selection:

Enter <x> to Exit          <Esc> to Previous Menu
```

Figure 8: BIOS Utility, Adapter Configuration Menu

6. Press **1** to Enable or Disable BIOS.
7. Exit the BIOS utility and reboot the system. After x86 BootBIOS is enabled on the HBAs, refer to the Configuration section for information on other adapter configuration menu options.

Configuring x86 BootBIOS

Introduction

The BIOS utility allows you to change HBA parameters (such as topology, PLOGI retry timer and auto scan setting) and configure boot devices.

- Default settings are acceptable for most installations.
- In the BIOS utility, press <d> to reset the selected adapter to default values.
- The default topology is auto topology with loop first. For FC-AL, each HBA has a default AL_PA of 01 (Hex). Change this topology setting, if necessary, before configuring boot devices.
- All HBAs or boot drives can be configured to other AL_PAs than their default values.
- If more than one HBA is in the system with the same PCI bus number, and each has a boot drive attached, the first PCI-scan HBA will be the boot HBA. The first HBA is usually in the lowest PCI slot in the system. This information can be viewed from the BIOS utility.

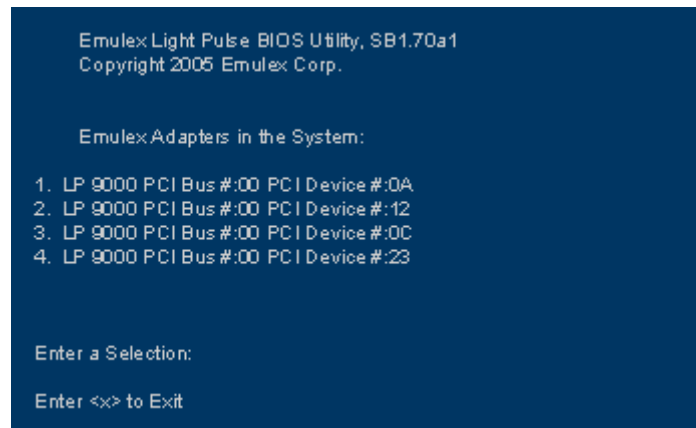
Start the BIOS Utility

Prerequisites

- x86 BootBIOS must be loaded and the bootup message enabled on at least one of the host bus adapters in your system to run the BIOS Utility.

To start the BIOS utility to configure your adapters:

1. Turn on the computer.
2. Press <Alt E> immediately (within five seconds) when the x86 BootBIOS message displays to start the BIOS Utility. An HBA listing is displayed.
3. Select the adapter to configure by entering the appropriate number.



```
Emulex Light Pulse BIOS Utility, SB1.70a1
Copyright 2005 Emulex Corp.

Emulex Adapters in the System:

1. LP 8000 PCI Bus #:00 PCI Device #:0A
2. LP 8000 PCI Bus #:00 PCI Device #:12
3. LP 8000 PCI Bus #:00 PCI Device #:0C
4. LP 8000 PCI Bus #:00 PCI Device #:23

Enter a Selection:

Enter <x> to Exit
```

Figure 9: BIOS Utility, HBA Listing

Note: If the x86 BootBIOS message does not appear, enable this message. See *Enable x86 BootBIOS on HBAs Using the BIOS Utility* on page 6 for more information.

- Select **1** to configure boot devices or **2** to configure the adapter's parameters.

```

Adapter 1: PCI Bus #:00 PCI Device #:0A

LP9000: I/O Base: 6600 Firmware Version: CS3.90A7
Port Name: 10000000 C928274A Node Name: 20000000 C928274A
Topology: Auto Topology: Loop first (Default)

1. Configure Boot Devices
2. Configure This Adapter's Parameters

Enter a Selection:

Enter <x> to Exit <d> to Default Values <Esc> to Previous Menu

```

Figure 10: BIOS Utility, Main Configuration Menu

- If you select to configure the adapter's parameters, the adapter configuration menu is displayed.

```

Adapter 1: PCI Bus #:00 PCI Device #:0A

LP9000: I/O Base:6600 Firmware Version: CS3.90A7
Port Name: 10000000 C928274A Node Name: 20000000 C928274A
Topology: FC_AL

1. Enable or Disable BIOS
2. Change Default ALPA of this adapter
3. Change PLOGI Retry Timer (+Advanced Option+)
4. Topology Selection (+Advanced Option+)
5. Enable or Disable Spinup delay (+Advanced Option+)
6. Auto Scan Setting (+Advanced Option+)
7. Enable or Disable EDD 3.0 (+Advanced Option+)
8. Enable or Disable Start Unit Command (+Advanced Option+)
9. Enable or Disable Environment Variable (+Advanced Option+)
A. Auto Sector Format Select (+For MSA1000 Array Use Only+)

Enter a Selection:

Enter <x> to Exit <Esc> to Previous Menu

```

Figure 11: Adapter Configuration Menu

Adapter Configuration Menu Summaries

- Enable or Disable BIOS.** Enable or disable x86 BootBIOS on the selected adapter. To use any of its features, x86 BootBIOS must be enabled on at least one installed HBA. See *Enable x86 BootBIOS on HBAs Using the BIOS Utility* on page 6 for more information.
- Change Default ALPA of this adapter.** This option applies only to arbitrated loop (FC-AL). The factory default is 01 (hexadecimal). See *Change the Default AL_PA* on page 10 for more information.
- Change PLOGI Retry Timer(+ Advanced Option+).** Set the interval for the port log in retry timer. The factory default is No PLOGI Retry: 0 msec. See *Change the PLOGI Retry Timer* on page 11 for more information.
- Topology Selection(+Advanced Option+).** If it is necessary to change the topology, do so before you configure boot devices. See *Change Topology* on page 11 for more information.
- Enable or Disable Spinup Delay(+ Advanced Option+).** Enable or disable the spinup delay. The factory default is disabled. See *Enable/Disable the Spinup Delay* on page 12 for more information.

6. **Auto Scan Setting(+ Advanced Option+)**. Enable the first device in the boot entry list to issue a Name Server Inquiry. The factory default is disabled. See *Set Auto Scan* on page 13 for more information.
7. **Enable or Disable EDD 3.0(+ Advanced Option+)**. Enable or disable the Enhanced Disk Driver (EDD) option, which is available on Itanium 64-bit servers only. The factory default is disabled. See *Enable/Disable EDD 3.0* on page 14 for more information.
8. **Enable or Disable Start Unit Command(+ Advanced Option+)**. You must know the specific LUN to issue the SCSI Start Unit Command. The factory default is disabled. See *Enable/Disable the Start Unit Command* on page 14 for more information.
9. **Enable or Disable Environment Variable(+ Advanced Option+)**. Enable or disable the ability to set the boot controller order, if the system supports the environment variable. The factory default is disabled. See *Enable/Disable the Environment Variable* on page 15 for more information.
- A. **Auto Sector Format Select(+ For MSA10000 Array use Only+)**. This option automatically defines the boot sector (32-sector or 63-sector) of the target disk. The factory default is enabled. See *Enable/Disable Auto Sector Format Select* on page 15 for more information.

Change the Default AL_PA

This option allows you to change the AL_PA (Arbitrated Loop Physical Address) of the selected adapter. The default value of the AL_PA for the adapter BIOS is 01 (hex).

Note: This option applies only to arbitrated loop (FC-AL).

To change the default AL_PA:

1. Start the BIOS utility and select the adapter.
2. When the main menu opens select **2**, Configure This Adapter's Parameters. The adapter configuration menu is displayed (Figure 11).
3. Select **2**, Change Default ALPA of this adapter.

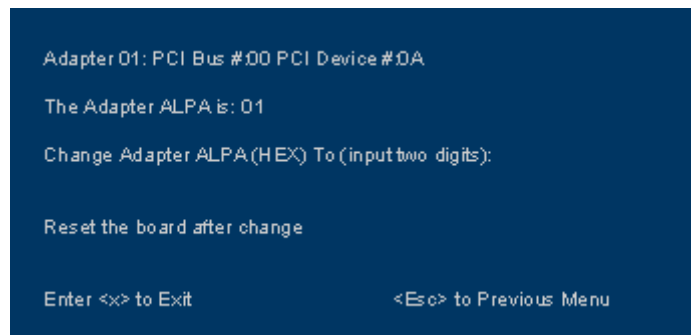


Figure 12: Change Default ALPA Screen

4. Type the AL_PA, in hexadecimal notation, to which you want to change the default.
5. Press <x> to exit the BIOS utility and reboot the system.

Note: If the host adapter's AL_PA is changed, it will not show on the NVRAM AL_PA until the system has been reset.

Change the PLOGI Retry Timer

This option allows you to set the interval for the PLOGI (port login) retry timer. This option is especially useful for Tachyon-based RAID arrays. Under very rare occasions, a Tachyon-based RAID array will reset itself and the port will go offline temporarily in the loop. When the port comes to life, the PLOGI retry interval scans the loop to discover this device. This default setting is No PLOGI Retry: 0 msec.

To set the interval for the PLOGI retry timer:

1. Start the BIOS utility and select the adapter.
2. When the main menu opens select **2**, Configure This Adapter's Parameters. The adapter configuration menu is displayed (Figure 11).
3. Select **3**, Change PLOGI Retry Timer (+Advanced Option+).

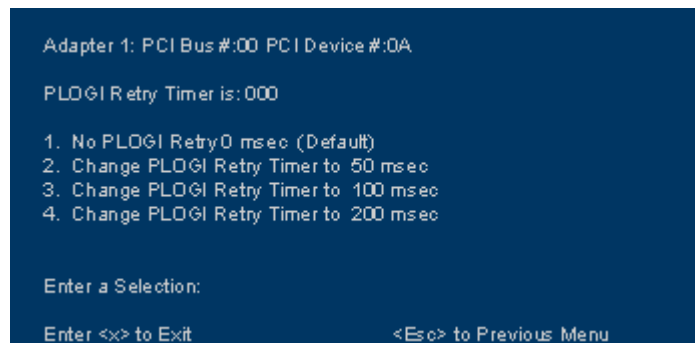


Figure 13: Change the PLOGI Retry Timer Screen

4. Select the PLOGI retry timer interval. The time it takes for one PLOGI to scan the whole loop (if 126 AL_PA are on the loop) is shown below:
 - 50 msec will take 5 to 6 seconds per device.
 - 100 msec will take 12 seconds per device.
 - 200 msec will take 22 seconds per device.
5. Press <x> to exit the BIOS utility and reboot the system.

Change Topology

This option allows you to select the topology for the host adapter.

Note: The default topology is auto topology with loop first. Change this topology setting, if necessary, before configuring boot devices.

To select the host adapter topology:

1. Start the BIOS utility and select the adapter.
2. When the main menu opens select **2**, Configure This Adapter's Parameters. The adapter configuration menu is displayed (Figure 11).

3. Select **4**, Topology Selection (+Advanced Option+).

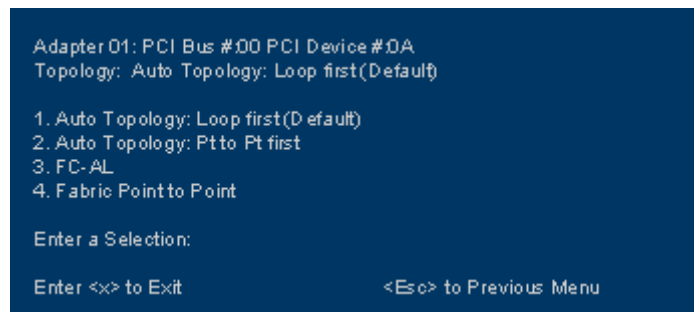


Figure 14: Topology Menu

4. Select the topology for the HBA:
 - Select 1 for auto topology with loop first.
 - Select 2 for auto topology with point-to-point first.
 - Select 3 for FC-AL.
 - Select 4 for fabric point-to-point.
5. Press <x> to exit the BIOS utility and reboot the system.

Enable/Disable the Spinup Delay

This option allows you to enable or disable the spinup delay. The factory default setting is disabled.

If at least one boot device has been defined, and the spinup delay is enabled, the BIOS searches for the first available boot device.

- If a boot device is present, the BIOS boots from it immediately.
- If a boot device is not ready, the BIOS waits for the spinup delay and, for up to three additional minutes, continues the boot scanning algorithm to find another Multi-boot device.

If no boot devices have been defined, and auto scan is enabled, then the BIOS waits for five minutes before scanning for devices.

- In a private loop, it attempts to boot from the lowest target AL_PA it finds.
- In an attached fabric, it attempts to boot from the first target found in the NameServer data.

To enable or disable the spinup delay, do the following:

1. Start the BIOS utility and select the adapter.
2. When the main menu opens select **2**, Configure This Adapter's Parameters. The adapter configuration menu is displayed (Figure 11).
3. Select **5**, Enable or Disable Spinup Delay (+Advanced Option+).

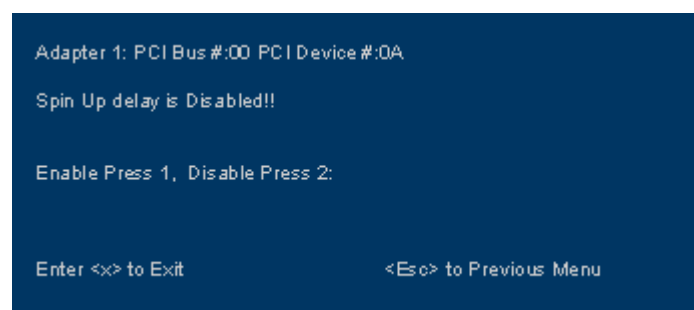


Figure 15: Enable or Disable Spinup Delay Screen

4. Select 1 to enable the spinup delay, or press 2 to disable it.
5. Press <x> to exit the BIOS utility and reboot the system.

Set Auto Scan

This option allows you to set auto scan. The factory default setting is disabled. Auto Scan is available only if none of the eight boot entries is configured to boot via DID or WWPN. It is strongly recommended that you use the Configure Boot Devices menu to configure eight boot entries for fabric point-to-point, public loop or private loop configurations.

With auto scan enabled, the first device will issue a Name Server Inquiry. The boot device will be either the first DID, LUN 0, or not LUN 0 device returned, depending on the option you select. Only this device will be the boot device and it will be the only device exported to the Multi-boot menu.

To set auto scan:

1. Start the BIOS utility and select the adapter for which you want to set auto scan.
2. When the main menu opens select **2**, Configure This Adapter's Parameters. The adapter configuration menu is displayed (Figure 11).
3. Select **6**, Auto Scan Setting (+Advanced Option+).

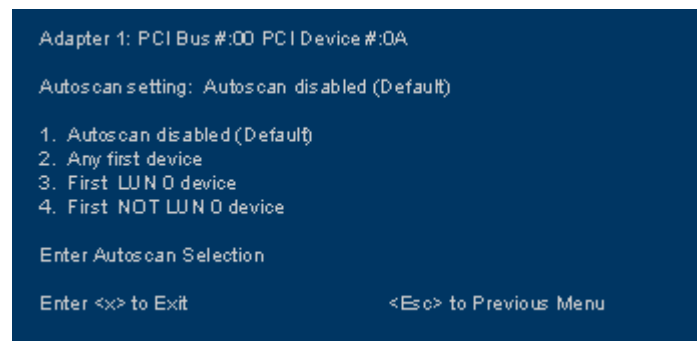


Figure 16: Set Auto Scan Screen

4. Select the auto scan option:
 - Select 1 to disable auto scan.
 - Select 2 to scan for any first device. The first adapter issues a name server inquiry, and the first D_ID from the inquiry becomes the boot device. The adapter attempts to log in to a public loop first. If it fails, it logs in to a private loop. The first successfully scanned device becomes the boot device. Only this device is exported to the Multi-boot menu.
 - Select 3 to scan for the first LUN 0 device.
 - Select 4 to scan for the first device that is not LUN 0.
5. Press <x> to exit the BIOS utility and reboot the system.

Enable/Disable EDD 3.0

This option allows you to enable or disable the Enhanced Disk Drive (EDD) option, which is available on Intel Itanium servers only. Enabling EDD 3.0 displays the path to the boot device. The default setting is disabled.

Note: An x86 system could hang during Windows 2000 Server installation if EDD 3.0 is enabled.

To enable or disable EDD 3.0:

1. Start the BIOS utility and select the adapter for which you want to enable or disable EDD 3.0.
2. When the main menu opens select **2**, Configure This Adapter's Parameters. The adapter configuration menu is displayed (Figure 11).
3. Select **7**, Enable or Disable EDD 3.0(+Advanced Option+).

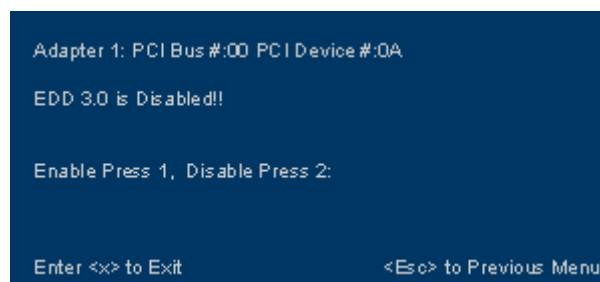


Figure 17: Enable or Disable EDD 3.0 Screen

4. Select **1** to enable EDD 3.0, or press **2** to disable it.
5. Press <x> to exit the BIOS utility and reboot the system.

Enable/Disable the Start Unit Command

This command is used to issue the SCSI start unit command. You must know the specific LUN to issue the SCSI start unit command. The default setting is disabled.

To enable or disable the start unit command:

1. Start the BIOS utility. Select the HBA for which you want to enable or disable the start unit command.
2. When the main menu opens select **2**, Configure This Adapter's Parameters. The adapter configuration menu is displayed (Figure 11).
3. Select **8**, Enable or Disable Start Unit Command(+Advanced Option+).

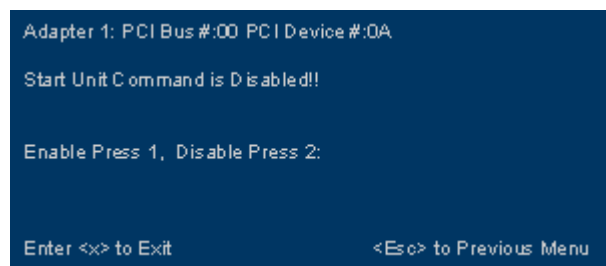


Figure 18: Enable or Disable Start Unit Command Screen

4. Select **1** to enable the start unit command, or **2** to disable it.
5. Press <x> to exit the BIOS utility and reboot the system.

Enable/Disable the Environment Variable

This option allows you to set the boot controller order if the system supports the environment variable. The default setting is disabled.

To enable or disable the environment variable:

1. Start the BIOS utility and select the adapter for which you want to enable or disable the environment variable.
2. When the main menu opens select **2**, Configure This Adapter's Parameters. The adapter configuration menu is displayed (Figure 11).
3. Select **9**, Enable or Disable Environment Variable(+Advanced Option+).

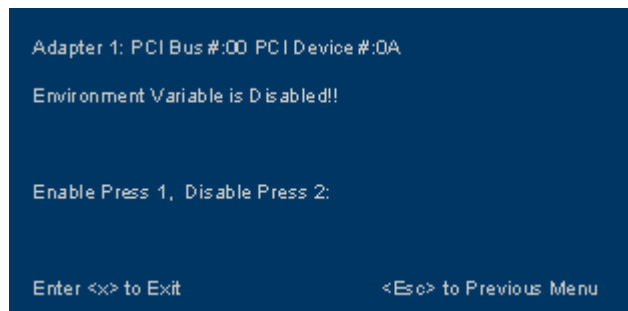


Figure 19: Enable or Disable Environment Variable Screen

4. Select **1** to enable the Environment Variable, or **2** to disable it.
5. Press <x> to exit the BIOS utility and reboot the system.

Enable/Disable Auto Sector Format Select

This option automatically defines the boot sector (32-sector or 63-sector) of the target disk. If there is no partition on the target, the default boot sector format is 63 sectors. The default setting is enabled.

To enable or disable auto sector format select, do the following:

1. Start the BIOS utility and select the adapter for which you want to enable or disable the command.
2. When the main menu opens select **2**, Configure This Adapter's Parameters. The adapter configuration menu is displayed (Figure 11).
3. Select **A**, Enable or Disable Auto Sector Format Select(+For MSA1000 Array Use Only+).

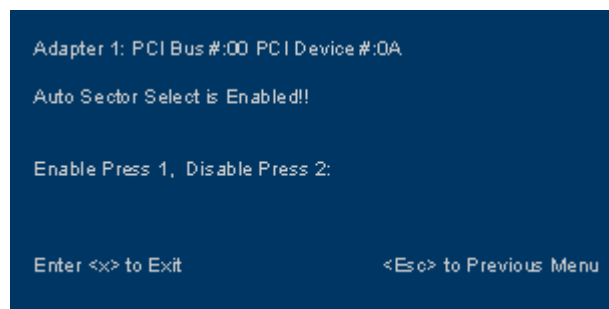


Figure 20: Enable or Disable Auto Sector Format Select Screen

4. Select **1** to enable auto sector format select, or **2** to disable it.
5. Press <x> to exit the BIOS utility and reboot the system.

Configure Boot Devices

This option supports FC_AL: (public loop and private loop) and fabric point-to-point. When operating in loop (FC_AL) topology, the system automatically determines whether you are configured for a public or private loop. The BIOS looks for a fabric loop (FL_Port) first. If a fabric loop is not detected, the BIOS looks for a private loop. For the "Configure Boot Devices" option, the 64 boot entries will be zero by default (<d> key).

To configure boot devices:

1. Start the BIOS utility and select the adapter for which you want to configure boot devices.
2. When the Main menu opens select 1, Configure Boot Devices.

A list of 8 boot devices is shown. We recommend that only the bootable devices be configured. The primary boot device is the first entry shown, and it is the first bootable device.

- If the first boot entry fails due to a hardware error, the system can boot from the second bootable entry.
- If the second boot device fails, the system will boot from the third bootable entry and so on.

```

Adapter 1: S_ID:000001 PCI Bus #:00 I D evice #:0A

List of Saved Boot Devices:

1. Used DID:011CE1 WWPN:22000020 37 191954 LUN:0 Primary Boot
2. Unused DID:011CE1 WWPN:22000020 37 191954 LUN:0
3. Unused DID:011CE1 WWPN:22000020 37 191954 LUN:0
4. Unused DID:011CE1 WWPN:22000020 37 191954 LUN:0
5. Unused DID:011CE1 WWPN:22000020 37 191954 LUN:0
6. Unused DID:011CE1 WWPN:22000020 37 191954 LUN:0
7. Unused DID:011CE1 WWPN:22000020 37 191954 LUN:0
8. Unused DID:011CE1 WWPN:22000020 37 191954 LUN:0

Select a Boot Entry:

Enter <x> to exit                               <Esc> to Previous Page
  
```

Figure 21: List of Saved Boot Devices

3. Select a boot entry. The following screen opens:

```

00. Clear Selected Boot Entry!!
01. ALPA: E2(03) WWPN: 22000020 37191954 LUN:CE SEAGATE ST29103FC 0002
02. ALPA: E4(02) WWPN: 22000020 37191954 LUN:00 SEAGATE ST29103FC 0002
03. ALPA: E8(01) WWPN: 22000020 37191954 LUN:00 SEAGATE ST29103FC 0002
  
```

Figure 22: Device Selection List

Note: We recommend that you select the drive with the lowest AL_PA as the boot device.

4. Select 00 to clear the selected boot entry, or select a device to configure booting via WWPN or DID. If you select a device, you will be asked for the starting LUN.

5. Enter the starting LUN. The starting LUN can be any number between 0 and 255.

```

Adapter 1: S_ID:000001) PCI Bus #:00 PCI Device #:0A
ALPA:E2 Select ID:03 WWPN:22000020 37 19 1954

01. B1W LUN 00 SEAGATE ST39103FC 0002
02.   LUN 01 SEAGATE ST39103FC 0002
03.   LUN 02 SEAGATE ST39103FC 0002
04.   LUN 03 SEAGATE ST39103FC 0002

Enter a Selection:
B#W: Boot number via WWPN.      B#D: Boot number via DID
Enter <x> to Exit                <Esc> to Previous Menu

```

Figure 23: LUN Listing

There are a possible 256 LUNs that can be defined per adapter, but the screen displays up to 16 consecutive LUNs at a time. In front of each entry, B#D or B#W specifies the boot entry number and whether the device boots via DID or WWPN. For example, B1D means that boot entry one will boot via DID. B2W means that boot entry two will boot via WWPN.

6. Select an entry. Another menu displays the following options:
 1. Boot this device via WWPN
 2. Boot this device via DID
7. Select the desired boot method.

If you select to boot the device via WWPN, the WWPN of the earlier selected entry is saved in the flash. However, during the initial BIOS scan, it will issue a Name Server Inquiry GID_PN (Get Port Identifier). Then, based on this DID, it will continue with the remainder of the scanning.

If you select to boot this device via DID, the earlier selected entry will be saved in the flash.

Install Windows 2000 Server on a Fibre Channel Disk

This procedure installs the Windows 2000 Server operating system onto a previously unformatted Fibre Channel disk drive that is connected to the Emulex adapter.

Note: Your computer's system BIOS may require that another controller take precedence over the Emulex adapter during boot. If this occurs, you must disconnect or disable the other adapter. This will allow you to configure and build your operating system on the drive connected to the Emulex adapter.

To install Windows 2000 Server on a Fibre Channel disk:

1. From either the Emulex Web site or the CD-ROM that accompanies your Emulex product, download the latest version of the Emulex driver for Windows 2000 Server.
2. Extract the driver files onto a formatted floppy disk.
3. Boot with the Windows 2000 Setup Media. (This procedure assumes you are using CD-ROM medium. See Microsoft documentation for details.) The following message is displayed in the status bar:

"Setup is detecting your hardware."

4. Press <F6>. The following message is displayed in the status bar:

"Specify additional storage driver"

5. Press <S> to specify additional drivers.
6. Select **Other**.
7. Insert the floppy disk onto which you unzipped the Emulex driver in step 2.
8. If you downloaded the port driver, select a topology from the list and press <Enter>. If you downloaded the miniport driver, select your adapter from the list and press <Enter>.
9. Follow the instructions to complete the Emulex installation.
10. Remove the floppy disk that contains the driver files.
11. Complete the Windows 2000 Server installation.

Use Multi-Boot BIOS

Multi-boot BIOS is in compliance with BIOS Boot Specification (BBS). The system must have a Multi-boot system BIOS in order to take advantage of this feature. Multi-boot BIOS allows you to select any boot disk in the system BIOS setup menu. The boot disk can be a Fibre Channel drive, a SCSI drive, an IDE drive or a floppy drive. The Emulex BIOS supplies the first eight drives to the system BIOS menu. The Multi-boot BIOS can override the Fibre Channel drive that is selected in the BIOS utility.

For example, the system has only eight Fibre Channel disks. The boot disk has AL_PA 02. However, you can select AL_PA 23 in the system BIOS setup menu. The boot device will be the Fibre Channel disk with AL_PA 23 instead of AL_PA 02, as is set in the BIOS utility.

If your system supports Multi-boot BBS, the boot disk (drive C) is the first entry in Multi-boot on the system BIOS setup menu. The list of entries is determined by the list of configured boot entries in the BIOS utility. For example:

Adapter 1: boot_entry0, boot_entry1

Adapter 2: boot_entry2, boot_entry3

The order of boot entries that is exported to Multi-boot (BBS) is

boot_entry0, boot_entry1, boot_entry2, and boot_entry3.

However, Multi-boot can overwrite this order by using the following command:

boot_entry2, boot_entry0, boot_entry1, and boot_entry3.

In this case, drive C is

boot_entry2.

Troubleshooting x86 BootBIOS

There are circumstances in which your system may operate in an unexpected manner. This Troubleshooting section explains several of these circumstances and offers one or more workarounds for each situation.

The x86 BootBIOS Message Does Not Appear on Bootup

Situation: You want to access the x86 BootBIOS, but on bootup the x86 BootBIOS message does not appear.

Resolution: Make sure that x86 BootBIOS has been loaded and enabled.

Retry This Adapter Message

Situation: The message "Retry This Adapter" appears during BIOS scanning.

Resolution: Check the hardware configuration or reconfigure the HBA BIOS using the BIOS utility.

The .prg File Fails During Downloading

Situation: The .prg file fails during downloading. The 1.70a1 version of the BIOS image is 48k, which may cause the file to fail during downloading.

Resolution:

1. Download the firmware .awc file (without the BIOS image)
2. Download the BIOS image file.

Note: This problem may occur with LP9402DC, LP9002L, LP9002DC, LP9000, LP952L, LP8000, LP8000DC or LP850 host bus adapters.

Loading OpenBoot

You can use one of the following utilities to load the OpenBoot image on the HBA:

- `lputil`: See *Load OpenBoot using lputil* on page 20.
- `lp6dutil` Utility for DOS: See the `lp6dutil` utility for DOS manual (click the HBA's Troubleshooting link).

Load OpenBoot using lputil

Prerequisites

- The Emulex driver for Solaris is installed and loaded properly.
- The OpenBoot file has been downloaded from the Emulex Web site and extracted to a directory on your local hard drive.
- `lputil` is installed properly.

To load OpenBoot using `lputil`:

Note: If this is the first time boot code is to be loaded on the adapter, the Device Driver Instances will be different because boot code adapters are identified by `lpfc` while non-boot code adapters are identified by Fibre Channel or the PCI device/vendor ID. If the driver instances change, it will make existing `lpfc.conf` configuration settings (like persistent binding) invalid as well as any previously used `/dev` and `/devices` directory links. To preserve existing configuration changes, enter:

```
/usr/sbin/lpfc/convert_path_lpfc /etc/path_to_inst
```

1. Start `lputil` by entering the complete path. The path in the example reflects the default installation path. If the installation path was modified, adjust the command appropriately.

```
/usr/sbin/lpfc/lputil
```
2. From the Main menu, enter **3**, Firmware Maintenance.
3. From the list that appears, choose the adapter onto which you want to load OpenBoot.
4. Enter **1**, Load Firmware Image.
5. Enter the full path to the remote boot image file. The new boot code is transferred to flash ROM.
6. From the Firmware Maintenance menu, press **6**, Boot BIOS Maintenance.
7. Press **1**, Enable Boot BIOS, to enable the BootBIOS message. (If item 1 is Disable Boot BIOS, the BootBIOS message is already enabled.)

Note: This step applies only to Solaris PCI systems, not to Solaris SBus systems.

8. To exit `lputil`, press **0** twice.
9. Follow the instructions in *Creating a Fibre Channel Remote Boot Disk* on page 21.

Configuring OpenBoot

Creating a Fibre Channel Remote Boot Disk

The procedures in this section explain how to set up your boot disk in a Solaris system.

Note: This section pertains only to Solaris systems. If you are using AIX with the IBM driver, refer to the documentation from IBM for instructions on configuring OpenFirmware.

From the system monitor prompt:

1. Reset to default value mode.
`ok set-default-mode`
-

Note: Always reset the system before making changes to your boot settings. Changes will not be saved if a reset is not performed first.

2. Show all system devices.

```
ok show-devs
```

The actual output will vary depending on your system. The path to the Emulex adapter will end with `lpfc@#` or with `fibre-channel`. If the path ends with `fibre-channel`, OpenBoot is not loaded in the adapter's firmware. You must load OpenBoot before continuing with this procedure. This procedure is an example only.

```
/pci@1f,2000/lpfc@1  
/pci@1f,4000/lpfc@2  
/pci@1f,2000/fibre-channel
```

3. Select the Emulex adapter. Select the second adapter shown above by entering the path to the adapter. The path you enter will be similar to, but different from, the one entered in this sample command.

```
ok " /pci@1f,4000/lpfc@2" select-dev
```

4. Check the OpenBoot version.

```
ok .version
```

5. Check the topology of the current device.

```
ok show-devs  
ok " /pci@1f,4000/lpfc@2" select-dev  
ok .topology  
ok unselect-dev
```

6. Use these commands to set the topology for the intended Fibre Channel boot disk to point-to-point (if the HBA is connected to a switch).

```
ok " /pci@1f,4000/lpfc@2" select-dev  
ok set-ptp  
ok unselect-dev  
ok reset
```


To set the topology back to loop (if the HBA is connected to a hub), enter these commands.

```
ok" /pci@1f,4000/lpfc@2" select-dev
ok set-fc-al
ok unselect-dev
ok reset
```

By default, the topology is set to auto-FCAL. To set auto topology with public or private loop first, enter these commands.

```
ok" /pci@1f,4000/lpfc@2" select-dev
ok set-auto-fcal
ok unselect-dev
ok reset-all
```

To set auto topology with point-to-point first, enter these commands.

```
ok" /pci@1f,4000/lpfc@2" select-dev
ok set-auto-ptp
ok unselect-dev
ok reset-all
```

- Determine the device: WWPN, DID, or AL_PA.

```
ok probe-scsi-all
```

Make note of the actual DID, WWPN, or AL_PA and the corresponding boot entry.

- Set the boot device ID.

```
ok" /pci@1f,4000/lpfc@2" select-dev
ok [wwpn|did|alpa] [lun] [target id] set-boot-id
ok unselect-dev
```

where **[wwpn|did|alpa]** - enter the device WWPN (point to point), DID (public loop), or ALPA (private loop).

[lun] - enter the LUN number in hex. To enter the decimal LUN number, enter d# [lun].

[target id] - enter the target id in hex. To enter the decimal target ID, enter d# [target id].

For example, with alpa=e1, lun=100 (decimal) and target id=10 (decimal):

```
ok did e1 d# 100 d# 10 set-boot-id
```

- Boot to the original local disk to set up the newly defined Fibre Channel disk.

```
ok boot [local disk]
```

where **[local disk]** - enter the complete path or the alias of the original boot disk.

Note: If the Fibre Channel disk is not found when the system is rebooted, enter "touch / reconfigure" and reboot. If the disk is still not discovered, edit the "/kernel/drv/lpfc.conf" file and change the topology from 4 to 2 or reverse. It may also be necessary to add an entry for the boot drive to the sd.conf file.

Table 1: Signature Table

Signature	OpenBoot signature
Valid_flag	internal flag for OpenBoot

Table 1: Signature Table (Continued)

Signature	OpenBoot signature
Host_did	shows host DID number
Enable_flag	internal flag for OpenBoot
Boot_id	shows target ID number
Lnk_timer	internal use for OpenBoot
Plogi_timer	internal use for OpenBoot
LUN	shows boot LUN in use
DID	shows boot ID in use
WWPN	shows boot WWPN in use

Note: Target ID can be bound to either DID (destination ID) or WWPN (worldwide port name) and saved in an adapter nvram. It can also be saved in an environmental variable boot-device.

Making a Bootable System Disk

The examples in this procedure use the logical drive designated as "c1t1d0" (controller 1, target 1, lun 0). Your logical drive may be different.

1. Boot from the local system disk.
2. Run the format utility.
3. Select the logical drive to become the boot disk (in this case, c1t1d0).
4. Select the partition option and partition the disk as desired.
5. Select the label option and write a volume label to the target disk.

For help with the format utility, refer to the man page "man format".

6. Install the boot on partition 0 of the target disk. (Enter this command as one line.)

```
# installboot /usr/platform/ `uname -i`/lib/fs/ufs/bootblk /dev/
rdsk/c1t1d0s0
```

7. Create a filesystem for each partition that will contain a mounted filesystem.

```
# newfs -v /dev/rdsk/c1t1d0s0 (will become root)
# newfs -v /dev/rdsk/c1t1d0s6 (will become usr)
# newfs -v /dev/rdsk/c1t1d0s7 (will become export/home)
```

8. Create temporary mount points for the new partitions.

```
# mkdir root2
# mkdir usr2
# mkdir export2
```

9. /dev/fd must be unmounted to copy the root file system. First, kill the volume manger.

```
# ps -ef|grep vold (to obtain the PID or process id)
# kill -9 PID (where PID is obtained above)
# umount /dev/fd
```

10. Mount, copy, then unmount the usr2 file system.

```
# mount /dev/dsk/c1t1d0s6 /usr2
# cd /usr
# tar cvf - * | ( cd /usr2; tar xf - )
# umount /usr2
```

11. Copy the export/home file system.

```
# mount /dev/dsk/c1t1d0s7 /export2
# cd /export# tar cvf - * | (cd /export2; tar xf -)
# umount /export2
```

12. Copy the root file system by first building a file list.

```
# cd /
ls -a > root_copy
```

13. Use the vi editor to edit root_copy and delete all entries that refer to mount points.

., .., usr, tmp, proc, export, root2, export2, usr2, opt (if a separate mount point)
and any other apparent filesystems displayed by the df command. Your goal in editing this file is to have the root_copy point to system files on the root directory without pointing to mount points.

14. Join file names so that they are on one line; if you are using vi, press <shift> <j> to do this.

15. Add the tar command to the file list so that the result looks like this:

```
tar cvf - TT_DB arg bak bin cdrom dev devices doit etc firmware
fun kernel lib mnt mt net platform .Xauthority .cpr_config .dt
.dtprofile sbin timer var x xfn | (cd /root2; tar xf - )
```

16. Perform copy.

```
# mount /dev/dsk/c1t1d0s0 /root2
chmod 777 root_copy
sh root_copy
```

17. Create the additional mount points (filesystem names).

```
# cd /root2
# mkdir export
# mkdir opt (if opt is a separate mount point)
```

```
# mkdir proc# mkdir tmp
# mkdir vol
# mkdir usr
```

18. Repeat for any other mounts unique to your system that were excluded in the copy.
19. Edit /root2/etc/vfstab, changing the controller number, target number and LUN number to point to the new Fibre Channel boot disk. For example, if the Fibre Channel boot disk is c1t1d0, replace all local disk entries of c0t0d0 with c1t1d0.

Currently file shows:
<pre>/dev/dsk/c0t0d0s1 (swap) /dev/dsk/c0t0d0s0 and /dev/rdisk/c0t0d0s0 (root) /dev/dsk/c0t0d0s6 and /dev/rdisk/c0t0d0s6 (usr) /dev/dsk/c0t0d0s7 and /dev/rdisk/c0t0d0s7 (export)</pre>

Edit file to show:
<pre>/dev/dsk/clt1d1s1 (swap) /dev/dsk/clt1d0s0 and /dev/rdisk/clt1d0s0 (root) /dev/dsk/clt1d0s6 and /dev/rdisk/clt1d0s6 (usr) /dev/dsk/clt1d0s7 and /dev/rdisk/clt1d0s7 (export)</pre>

20. Reboot the system.

```
# sync
# sync
# halt
ok reset
```

21. Boot to disk.

```
ok boot disk
```

The system should boot to the Fibre Channel disk.

22. View the current dump device setting.

```
# dumpadm
```

23. Change the dump device to the swap area of the Fibre Channel drive.

```
# dumpadm -d /dev/dsk/clt1d0s1
```

where /dev/dsk/clt1d0s1 is a sample path to the swap area of the Fibre Channel drive. Your path may be different from the one shown here. Enter your path.

Viewing OpenBoot Commands

Table 2: OpenBoot Commands

Command	Effect
ok .boot - id	Displays current boot device id
ok .version	Displays current version of OpenBoot
ok .topology	Displays current topology
ok .nvram	Displays current flags for OpenBoot
ok .host-did	Displays actual current AL_PA of adapter
ok set-default-mode	Resets to default value mode
ok remove-boot-id	Removes boot id from boot list
ok devalias	Displays boot list
ok show-devs	Displays list of devices found
ok probe-scsi-all	Displays current SCSI and FC devices

Troubleshooting OpenBoot

There are circumstances in which your system may operate in an unexpected manner. The Troubleshooting section explains several of these circumstances and offers one or more workarounds for each situation.

The System Cannot mount or fsck /etc/vfstab Fibre Channel Boot Disk

Situation: During the boot process, the system cannot mount or fsck /etc/vfstab Fibre Channel boot disk.

Resolution: Make sure that persistent binding is implemented correctly.

A Loaded File Is Not Executable

Situation: After entering boot disk, a message states that the file that was loaded is not executable.

Resolution: The boot block may not be installed correctly to the Fibre Channel drive. See the make bootable system disk procedure.

The System Hangs or Reboots After Displaying Driver Information

Situation: The system hangs for a long time after displaying driver information, or reboots after displaying driver information.

Resolution: Possible incorrect topology set in the /kernel/drv/lpfc.conf file on the target disk.

Fibre Channel Disk Is Not Found

Situation: You have performed the setup tasks and the Fibre Channel disk is not found when you reboot the system.

Resolution: Enter "touch/reconfigure" and reboot. If the disk is still not discovered, edit the "kernel/drv/lpfc.conf" file and change the topology from 4 to 2 or the reverse. It may also be necessary to add an entry for the boot drive to the sd.conf file.

Free Manuals Download Website

<http://myh66.com>

<http://usermanuals.us>

<http://www.somanuals.com>

<http://www.4manuals.cc>

<http://www.manual-lib.com>

<http://www.404manual.com>

<http://www.luxmanual.com>

<http://aubethermostatmanual.com>

Golf course search by state

<http://golfingnear.com>

Email search by domain

<http://emailbydomain.com>

Auto manuals search

<http://auto.somanuals.com>

TV manuals search

<http://tv.somanuals.com>