

Slim type remote control

RC105/IR507 USER GUIDE

BM-RC105507/LF

INDEX

1. Introduction.....	2
2. Appearance.....	2
3. Features.....	3
4. Package contents.....	3
5. System Requirements.....	3
6. Installation and Operation.....	4
7. Specifications.....	7
8. Troubleshooting.....	8

Caution!

No part of manual may be reproduced or modified without our express written permission; otherwise the right of using the device will be cancelled.

Trademarks

Microsoft®, Windows®, and Windows NT® are U.S. registered trademarks of Microsoft Corporation. IBM, DOS, and PC are registered trademarks of IBM Corporation. All brands, products and companies are trademarks of registered trademarks of their respective companies.

Notice

The information contained in this document is subject to change without notice. All rights are reserved. No part of document may be photocopied, reproduced, or translated to another language, for any purpose, without our express written permission.

Introduction :

Slim type remote control is not only a remote control, it also provides to enhance user's experience and enjoyment during the entertainment mode with PC/NB. It is your total solution to control various software with your desktop PC or Laptop PC by using this remote control.

Slim type remote control can turn any PC or Laptop into an AV center like CD or DVD player, even a TV set (tuner not include) with wireless controlling of all the application on your PC. It's also easy collect in your PCMCIA slot.

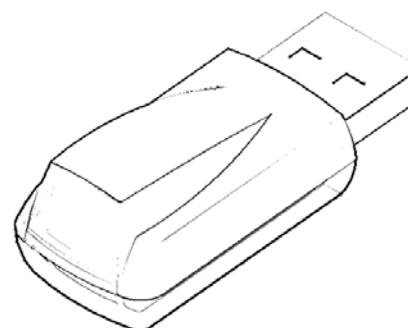
Software hotkey could be program by user. User may open/close 3 software on a remote control, even can integrate other remote control function in a Slim type remote control.

Bundle with eDio USB receiver to receive the IR (Infrared) signal from the remote control, and analyzes the signal then transfer it to PC.

Appearance :



Slim Remote Control: RC105



IR Receiver : IR507

Features :

1. Innovation design of Slim type remote control RC105 for controlling DVD/CD/MP3 software with desktop or laptop PC.
2. Bundle with tiny eDio receiver with USB Port, it's easy to connect with your computer.
3. O.S.D.(On Screen Display) to show each working function of RC105 on computer screen while you are using it.
4. Provide default settings for computer software (PowerCinema3, Windows Media Player, PowerPoint, Home Theater) and can be reset-up depends on user demands.
5. 3 software hotkeys convenient to edit personal hot key for different computer software with easy operation setting program.
6. Offer Value software "Remote Master" including application of Multi Remote Control Application.
7. Slim type design, easy collect in your PCMCIA slot.

Package contents :

- Slim Multi Remote Control (RC105)
- (USB Port) type receiver IR507
- User's Guide
- Value Software CD-ROM
- Coin Type Lithium battery CR2016 x 1
- USB extender cable

System Requirements :

- Intel® Pentium® 100 MHz PC included in 16M RAM or above
- Microsoft® Windows® 98SE/Me/2000/XP
- USB Port; PC platform
- CD-ROM drive

Installation and operation :

1. **Installing battery** -- Open the back cover of Remote Control and put in Coin Type **CR2016** Lithium battery.
2. **Installing receiver of remote control kit RC105** -- Plugging IR507 receiver (with USB Port on it) into the USB port of your computer. If the USB port in the back of desktop or laptop, recommend use USB extender cable to connect with your USB port of desktop or laptop and IR507 receiver and then put the IR507 receiver in front of you in order to get the signal from remote control.
3. **Installing CD-ROM** -- Place Value Software CD-ROM into your CD-ROM drive or DVD-ROM drive and execute **Setup.exe** file on CD. The installing application will be start after you double-click it. Please follow the instructions to finalize installation.
4. **Start to use remote control RC105** -- The application of RC105 will execute automatically after power up your computer. Then RC105 is on working condition; If you close automatic execute file, while you are using RC105, please press "Start" and "Program Files", and then click "Remote Control Administrator" and "Remote Master" to execute application and activate IR507. (You also can set up short cut on the table screen to activate IR507 easily.)
5. **Aim at infrared rays receiver** -- Before you start to use RC105 Remote Control, please aim at infrared rays RC105 receiver under effective range.
6. **How to use current setting software** -- If your computer is under RC105 default settings, there are three default software hotkeys: "DVD-PowerCinema3", "MUSIC-Windows Media Player", "PRESENT-PowerPoint". You can check Remote Master AP (figure 1). Click "Default" button is help you to re-cover to original settings.

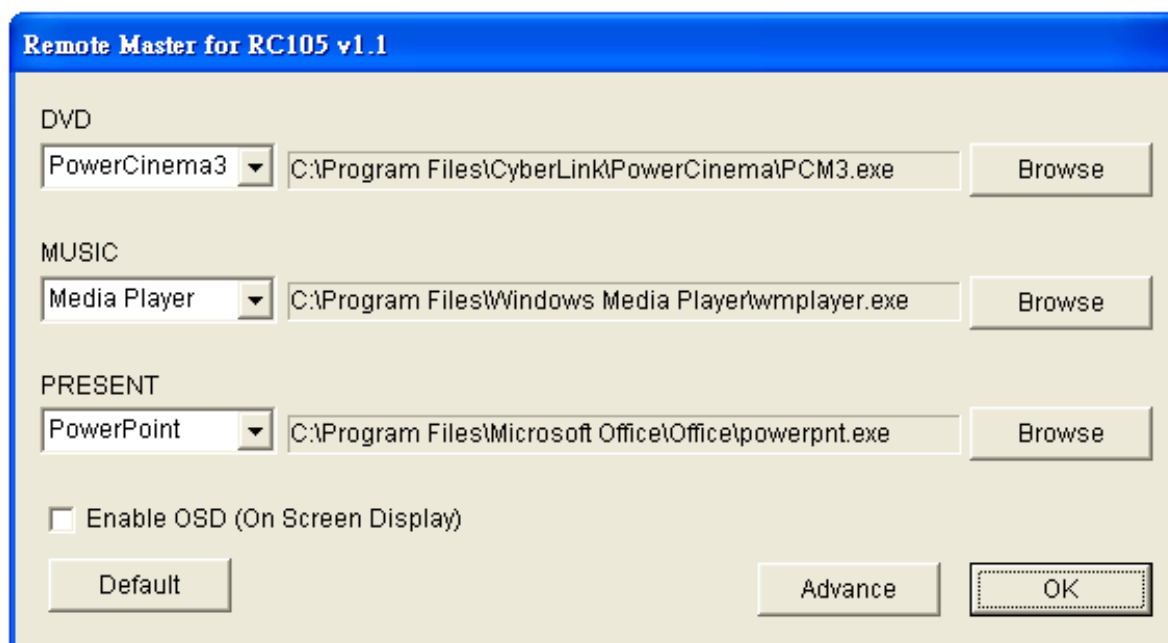



Figure 1

7. **How to change new software** --You may also modify computer software default setting of RC105 Remote Control by double-clicking 「」 --RC105 Remote Control setting program on taskbar. Please modify RC105 computer software default setting from hotkey setting menu. For example if select from PowerCinema3 to Home Theater or other software. (Figure 2).

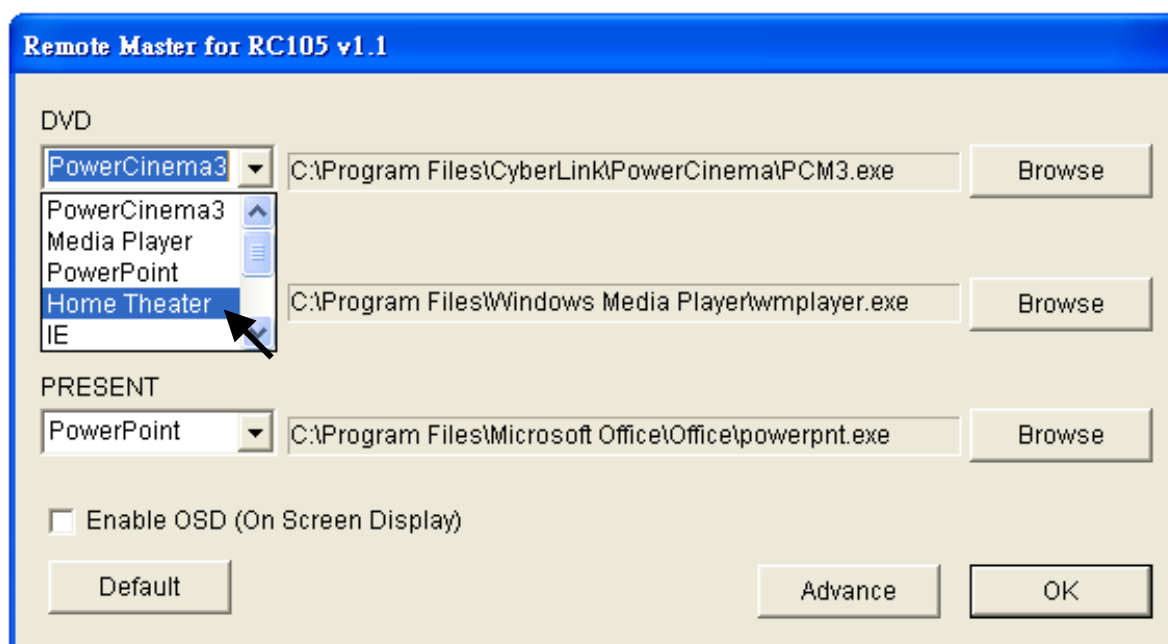
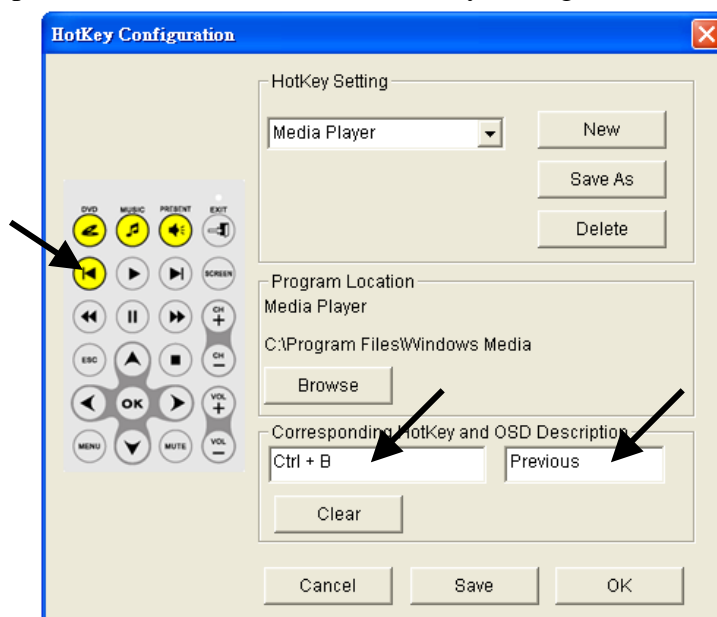


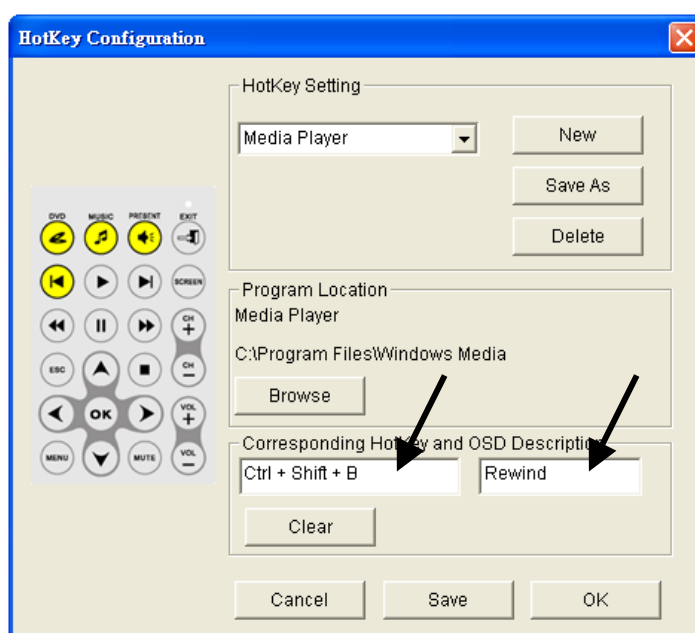
Figure 2

8. How to set up Hot Key –

- 1) Click the “advanced” setting.
- 2) If you are under Media Player software, you would like to modify original hotkey Ctrl+B (Previous function), please click “Pre/Ch- button”. (Figure 3)
- 3) Then key in the hotkey you want to in the corresponding Hotkey column. For example: ctrl+shift+B.
- 4) Then key in the description you like for this hotkey (for example: Rewind for ctrl+shift+B hotkey) in OSD (OSD, On Screen Display) display column. (Figure 4).
- 5) Then press “Save” button for new HotKey setting



【Figure 3】



【Figure 4】

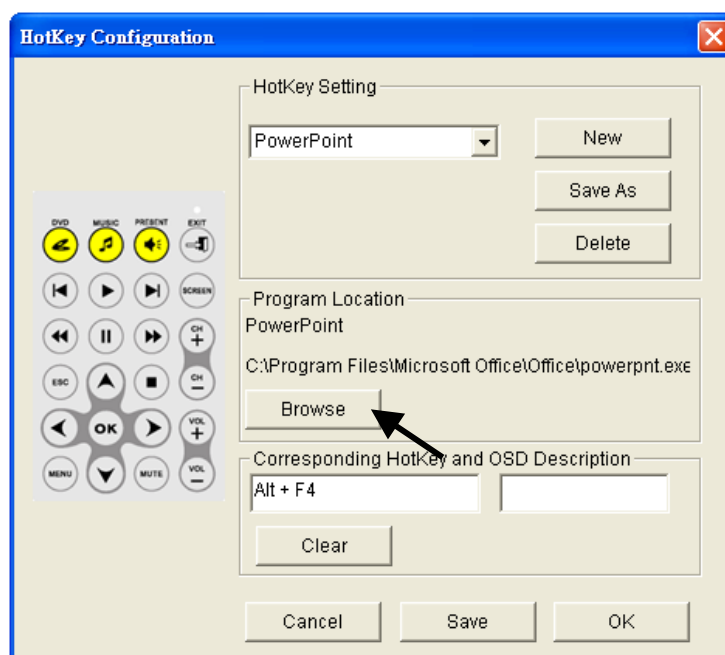
9. How to call a prepared file –

*If you're a business professional, this step is very useful for your presentation.

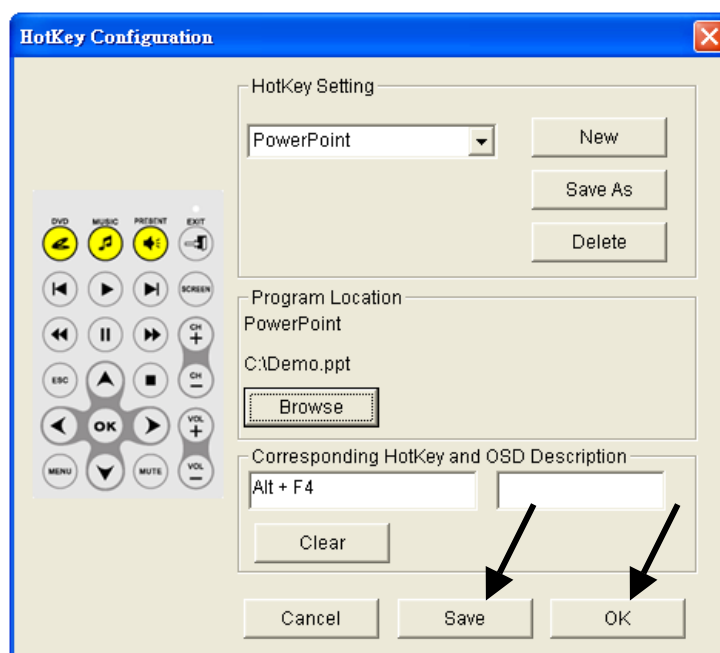
- 1) Click the “Advance” setting, and then change Hotkey Setting to “PowerPoint”.
- 2) Click the “Browse” button and then select the file that you prepared.

(Figure 5)

- 3) Then press “Save” & “OK” buttons for new program location setting. (Figure 6)
(The path & file name were an example, for your reference only.)
- 4) That's it, next time you press the “PRESENT” key on remote control, then file in the program location you select will open directly.



【Figure 5】



【Figure 6】

Specifications :

- Operation Voltage : 3V ; Battery : Coin Type Lithium CR2016
- Power Consumption : 10mA~150mA
- Infrared Rays Frequency : 38KHz ; Infrared Rays transmission distance : 5~7 meter
- Remote Control size : 86 x 53.8 x 4.9 mm
- Remote Control weight : 10 g (Not included in battery)
- Receiver Inter face : USB Port
- Remote Control Button Quantity : 24 buttons

Troubleshooting :

Question	Reason	Solution
If RC105 Remote Control doesn't work.	<ul style="list-style-type: none"> ● This is no battery or battery died or un-correct battery installation ● Un-correct RC105 Remote Control installation ● Un-properly connect with Receiver and computer. 	<ul style="list-style-type: none"> ● Check battery and installation ● Uninstall and re-install by following manual "Installation and operation third point". ● Check right connect with receiver (USB port) and computer (USB port)
RC105 irregular reaction	<ul style="list-style-type: none"> ● There is not activate RC105 application ● Computer software wrong saving route for RC105 installation. ● It doesn't work after press buttons due to the computer software is not working window. ● Editing HotKey of installation without closing the software you wants to use in advanced. 	<ul style="list-style-type: none"> ● Activate RC105 Remote Control application by following "Installation and operation forth point". ● Modify your save route of software by following "Installation and operation seventh point". ● HotKey setting is working after activating this software by RC105 Remote Control.

Notice:

Please activate software by RC105 Remote Control and then you can use all function of buttons

Status : It's doesn't operate software by RC105 Remote Control after Plugging IR507 receiver (with USB Port on it) into the USB port of your Sound card or Mainboard and finishing installation.

Solution : Please re-plug IR507 receiver (with USB Port on it) with your computer or restart your computer.

Free Manuals Download Website

<http://myh66.com>

<http://usermanuals.us>

<http://www.somanuals.com>

<http://www.4manuals.cc>

<http://www.manual-lib.com>

<http://www.404manual.com>

<http://www.luxmanual.com>

<http://aubethermostatmanual.com>

Golf course search by state

<http://golfingnear.com>

Email search by domain

<http://emailbydomain.com>

Auto manuals search

<http://auto.somanuals.com>

TV manuals search

<http://tv.somanuals.com>