

NOTE:
Please read all instructions
carefully before using this
product

Table of Contents

Safety Notice

Hardware Pack

Assembly Instruction

Parts List

Warranty

Ordering Parts

Model
TT-220

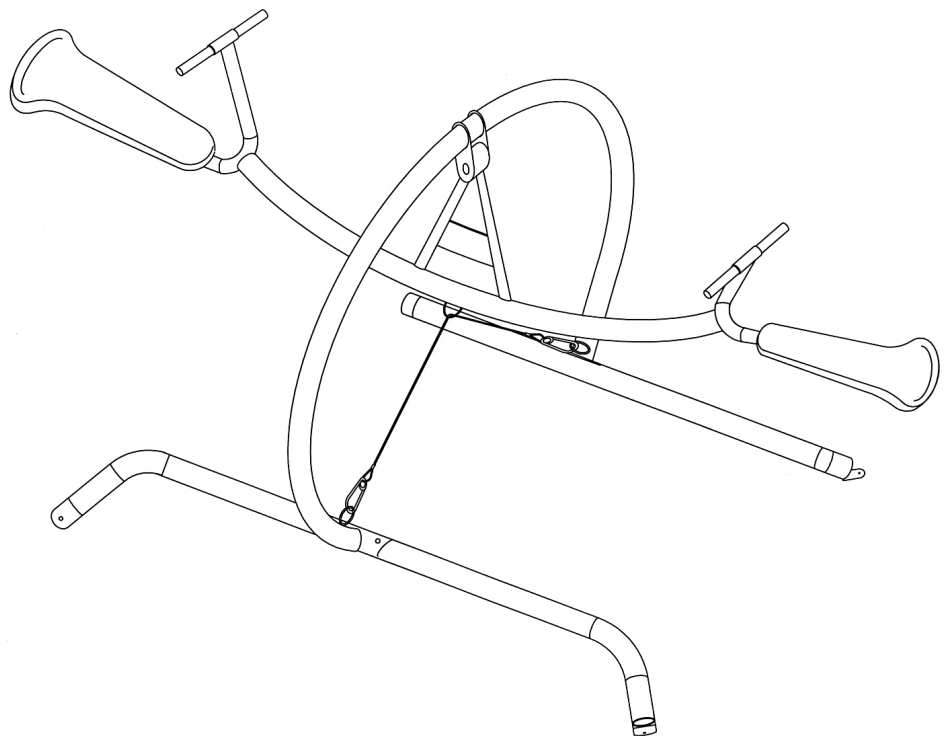
Retain This
Manual for
Reference

02-17-05

OWNER'S
MANUAL

Gym Dandy

TEETER TOTTER TT-220



IMPEX INC.

14777 DON JULIAN RD., CITY OF INDUSTRY, CA 91746

Tel: (800) 999-8899 Fax: (626) 961-9966

www.impex-fitness.com

info@impex-fitness.com

TABLE OF CONTENTS

BEFORE YOU BEGIN.....	1
IMPORTANT SAFETY NOTICES.....	3
HARDWARE PACK.....	5
ASSEMBLY INSTRUCTIONS.....	6
EXPLODED DIAGRAM.....	8
PARTS LIST.....	9
WARRANTY.....	10
ORDERING PARTS.....	10

BEFORE YOU BEGIN

Thank you for selecting the Gym Dandy Teeter Totter TT-220 by IMPEX INC. For your safety and benefit, read this manual carefully before using the machine. As a manufacturer, we are committed to provide you complete customer satisfaction. If you have any questions, or find there are missing or damaged parts, we guarantee you complete satisfaction through direct assistance from our factory. **DO NOT RETURN THE UNIT TO THE STORE!** To avoid unnecessary delays, please call our *TOLL-FREE customer service number*. Our Customer Service Agents will provide immediate assistance to you.

Toll-Free Customer Service Number

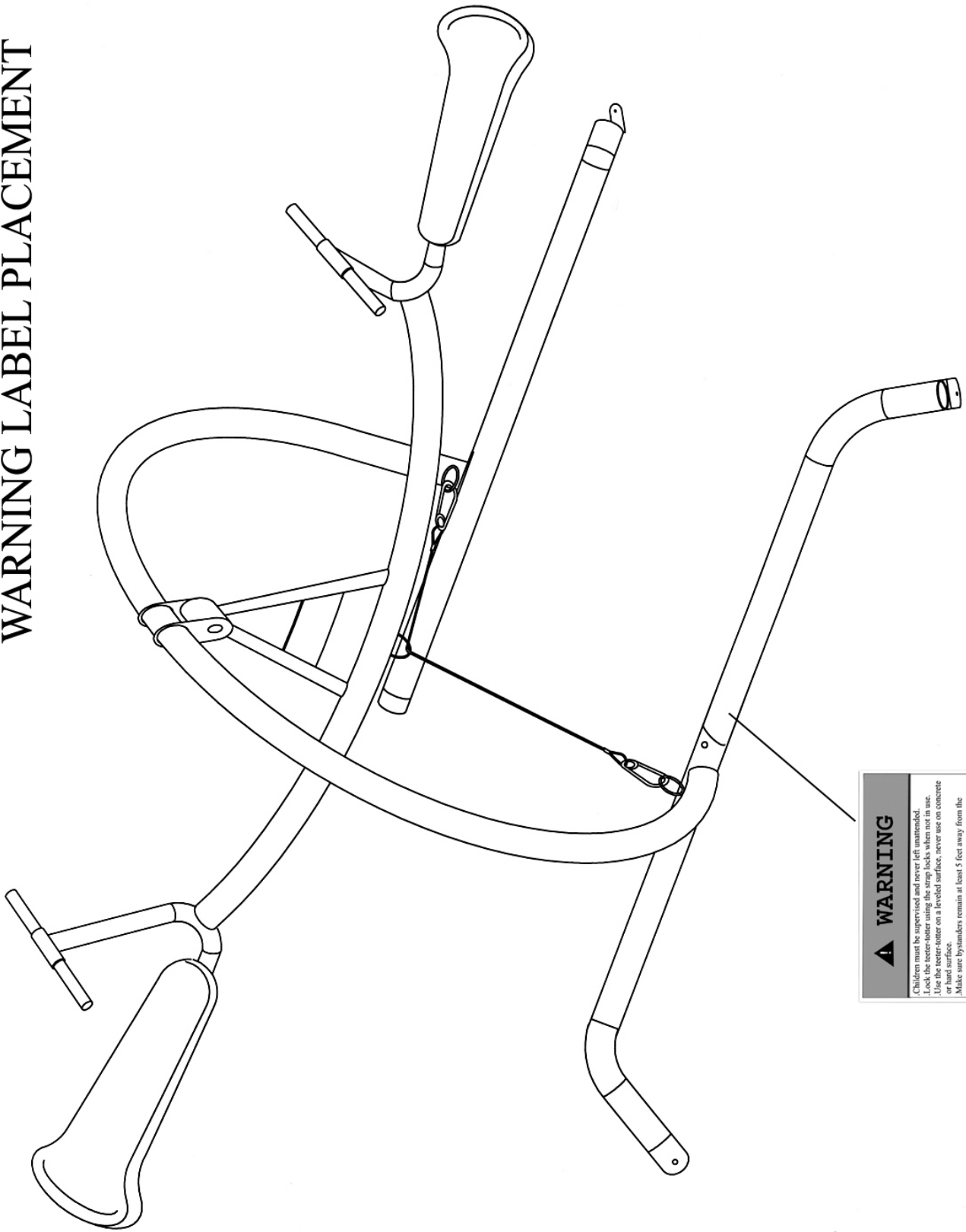
1-800-999-8899

Mon. – Fri. 9 a.m. – 5 p.m. PST

www.impex-fitness.com

info@impex-fitness.com

WARNING LABEL PLACEMENT



▲ WARNING

Children must be supervised and never left unattended.
Lock the teeter-totter using the strap locks when not in use.
Use the teeter-totter on a leveled surface, never use on concrete or hard surface.
Make sure bystanders remain at least 5 feet away from the teeter-totter when in use.
Keep hands and feet away from the pivot area.
Do not get off seat while it is in motion.
Do not stand on the teeter-totter, this could cause damage to the ride and result in injury.
The teeter-totter is intended for use by children from ages 3 to 13.

IMPORTANT SAFETY NOTICE

This play ground equipment is built for optimum safety. However, certain precautions apply whenever you operate a piece of play ground equipment. Be sure to read the entire manual before you assemble or operate your equipment. In particular, note the following safety precautions:

1. Children must be supervised at all times and never left unattended.
2. Use the teeter totter on a leveled surface. Never used on concrete or hard surface.
3. Make sure the surfaces, either indoors or outdoors, are free of objects that may cause tipping over.
4. Always place the teeter totter at least 6 feet away from any structure or obstruction.
5. Lock the teeter-totter with the strap locks when not in use.
6. Make sure bystanders are at least 5 feet away from the teeter totter while it is in motion.
7. Keeps hands and feet away from the pivot area.
8. Do not get off from seat while it is in motion.
9. Do no stand on the teeter-totter. This could cause damage to the ride and result in injury.
10. Do not swing with empty seat.
11. Children should not wear loose clothing. Attire should include well-fitting shoes.
12. This teeter totter is intended for use by children from ages 3 to 13.
13. Maximum weight capacity 300 lbs.
14. Only two persons should be using the equipment at the same time.
15. Impact-absorbing material must be placed around the teeter totter. Please refer to the PLAYGROUND SURFACING MATERIALS in page 4.

Care and Maintenance

1. Periodically inspect all parts.
2. Replace any worn and damaged part immediately.
3. Cover the equipment with tarp when left outdoor.
4. Use mild household spray cleaners and/or a damp rag to wipe clean. Do not use harsh cleaning chemicals.

SAVE THESE INSTRUCTIONS.

CONSUMER INFORMATION SHEET FOR PLAYGROUND SURFACING MATERIALS

The U.S. Consumer Product Safety Commission (CPSC) estimates that about 100,000 playground equipment-related injuries resulting from falls to the ground surface are treated annually in U.S. hospital emergency rooms. Injuries involving this hazard pattern tend to be among the most serious of all playground injuries, and have the potential to be fatal, particularly when the injury is to the head. The surface under and around playground equipment can be a major factor in determining the injury-causing potential of a fall. It is self evident that a fall onto a shock absorbing surface is less likely to cause a serious injury than a fall onto a hard surface. Playground equipment should never be placed on hard surfaces such as concrete or asphalt and while grass may appear to be acceptable it may quickly turn to hard packed earth in areas of high traffic. Shredded bark mulch, wood chips, fine sand or fine gravel are considered to be acceptable shock absorbing surfaces when installed and maintained at a sufficient depth under and around playground equipment.

The following table lists the maximum height from which a child would not be expected to sustain a life-threatening head injury in a fall onto four different loose-fill surfacing materials if they are installed and maintained at depths of 6, 9, and 12 inches. However, it should be recognized that all injuries due to falls cannot be prevented no matter what surfacing material is used.

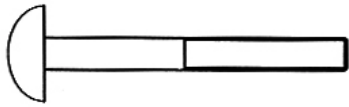
FALL HEIGHT IN FEET FROM WHICH A LIFE THREATENING HEAD INJURY WOULD NOT BE EXPECTED			
TYPE OF MATERIAL	6-INCH DEPTH	9-INCH DEPTH	12-INCH DEPTH
Double Shredded Bark Mulch	6	10	11
Wood Chips	6	7	12
Fine Sand	5	5	9
Fine Gravel	6	7	10

It is recommended that a shock absorbing material should extend a minimum of 6 feet in all directions from the perimeter of stationary equipment such as climbers and slides. However, because children may deliberately jump from a moving swing, the shock absorbing material should extend in the front and rear of a swing a minimum distance of 2 times the height of the pivot point measured from a point directly beneath the pivot on the supporting structure.

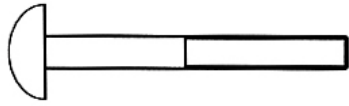
This information is intended to assist in comparing the relative shock-absorbing properties of various material. No particular material is recommended over another. However, every material is only effective when properly maintained. Materials should be checked periodically and replenished to maintain correct depth as determined necessary for your equipment. The choice of a material depends on the type and height of the playground equipment, the availability of the material in your area, and its cost.

'This information has been extracted from the CPSC publications "Playground Surfacing - Technical Information Guide" and "Handbook for Public Playground Safety." Copies of these reports can be obtained by sending a postcard to the: Office of Public Affairs, U.S. Consumer Product Safety Commission, Washington, D.C., 20207 or call the toll-free hot line: 1-800-638-2772.

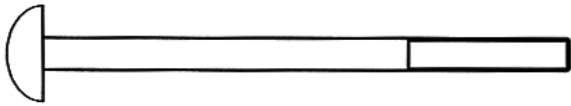
HARDWARE PACK



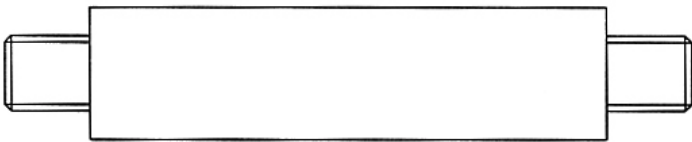
#19 M10 x 2 1/2" Allen Bolt (Qty 2)



#15 M10 x 2 7/8" Allen Bolt (Qty 8)



#20 M10 x 4 3/8" Allen Bolt (Qty 2)



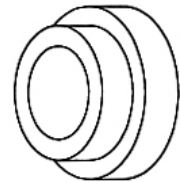
#11 Axle (Qty 1)



#17 M10 Aircraft Nut (Qty 8)



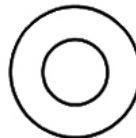
#14 M12 Aircraft Nut (Qty 2)



#18 Bushing (Qty 2)



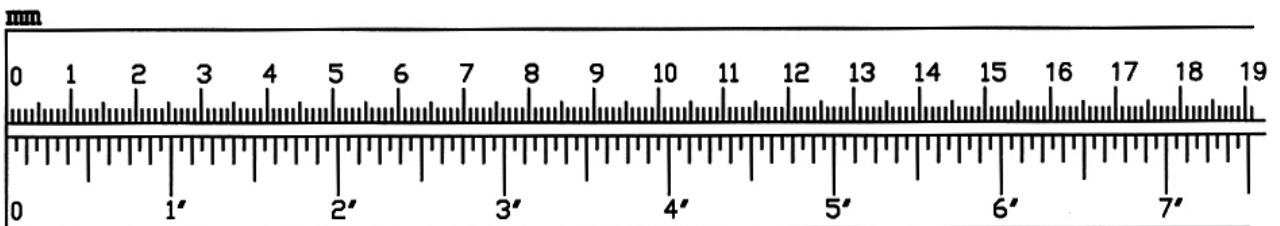
#21 Ø 3/4" Washer (Qty 2)



#13 Ø 1" Washer (Qty 2)



#16 Ø 3/4" Bent Washer (Qty 18)



ASSEMBLY INSTRUCTION

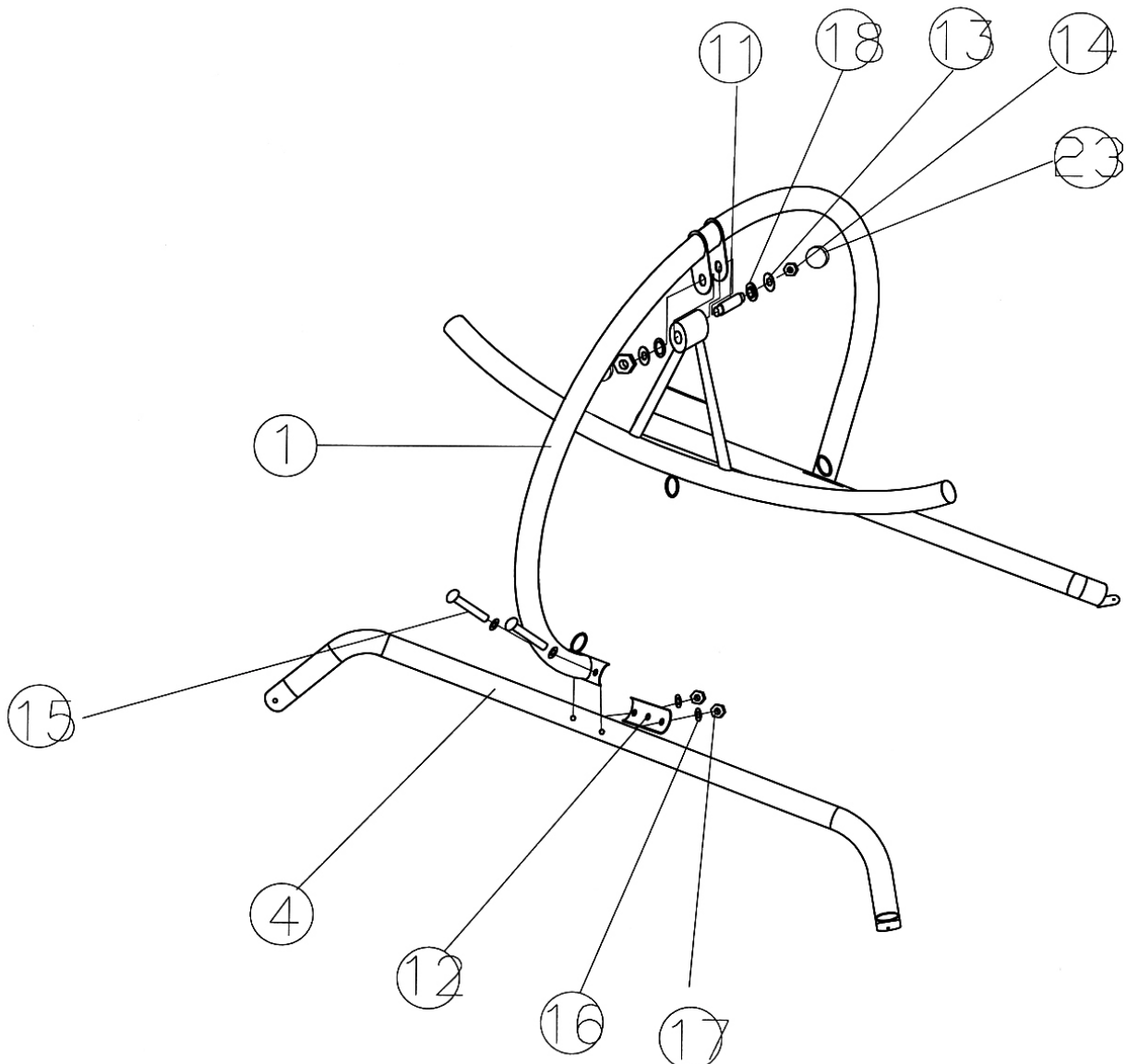
Tools Required Assembling the Machine: Two Adjustable Wrenches and Allen Wrench

NOTE: It is strongly recommended this machine be assembled by two or more people to avoid possible injury.

STEP 1 (See Diagram 1)

- A.) Place the two Base Stabilizers (#4) on a flat surface. Attach one end of the Main Frame (#1) to a Base Stabilizer. Secure it with two M10 x 2 7/8" Allen Bolts (#15), one Bracket (#12), four Ø 3/4" Bent Washers (#16), and two M10 Aircraft Nuts (#17).
- B.) Repeat the same procedure to install the other Base Stabilizer.
- C.) NOTE: Help of another person is strongly recommended for this step. Place the Pivot on the Swing Frame (#2) in between the brackets on the Main Frame. Attach a Bushing (#18) to each end of the Bracket.
- D.) Align the holes then insert the Axle (#11) through the holes and secure it with one Ø1" Washer (#13) and M12 Aircraft Nut (#14) on each end of the Axle. Cover the ends of the Axle with two Axle End Caps (#23).

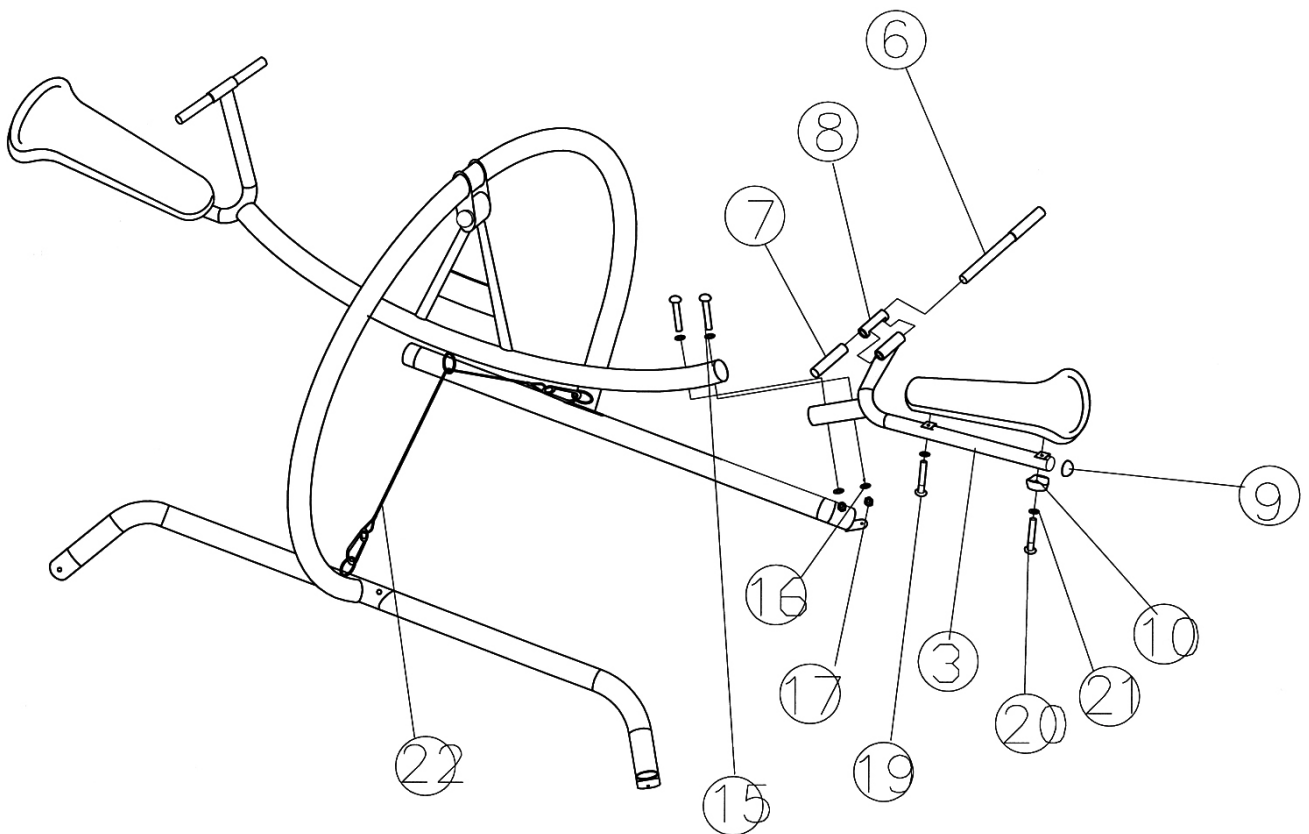
DIAGRAM 1



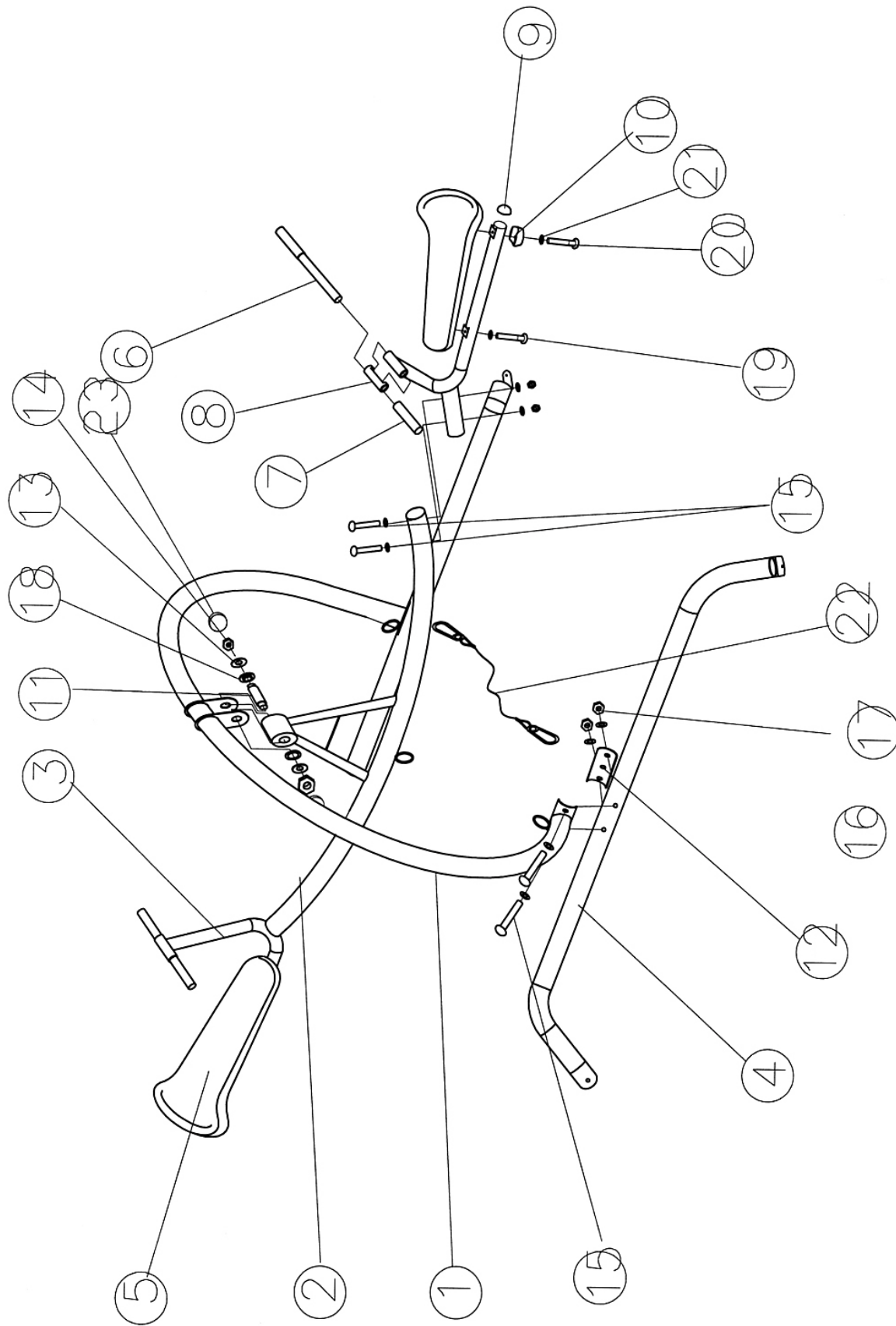
STEP 2 (See Diagram 2)

- A.) Insert a Seat Support (#3) into one end of the Swing Frame (#2). Align the holes and secure it with two M10 x 2 7/8" Allen Bolts (#15), four Ø 3/4" Bent Washers (#16), and two M10 Aircraft Nuts (#17).
- B.) Place the Seat (#5) onto the Seat Support. Secure the front hole with one M10 x 2 1/2" Allen Bolt (#19) and Ø 3/4" Bent Washer (#16). Secure the rear hole with one M10 x 4 3/8" Allen Bolt (#20), Ø 3/4" Washer (#21), and Rubber Bumper (#10).
- C.) Attach the Handle Cover (#8) to the tube on the Seat Support. Align the holes and insert the Handle Bar (#6) halfway through the tube. Push two Handlebar Grips (#7) onto the Handle Bar from both ends. Note: Use water or soap water to lubricate the inside of the Grips when installing the Grips. DO NOT use oil.
- D.) Repeat Procedures A, B, and C above to install the other Seat.
- E.) To lock the equipment when not in use, insert the Cable through the "ring" on the bottom of the Swing Frame and attach both ends of the Cable to the "ring" on the Base Stabilizers. When ready to use the equipment, remove the Cable.

DIAGRAM 2



EXPLODED DIAGRAM



Parts list

KEY NO.	DESCRIPTION	Q'ty
1	Main Frame	1
2	Swing Frame	1
3	Seat Support	2
4	Base Stabilizer	2
5	Seat	2
6	Handle Bar	2
7	Handle Grip	4
8	Handle Cover	2
9	Ø 2" End Cap	2
10	Rubber Bumper	2
11	Axle	1
12	Bracket	2
13	Ø 1" Washer	2
14	M12 Aircraft Nut	2
15	M10 x 2 7/8" Allen Bolt	8
16	Ø 3/4" Bent Washer	18
17	M10 Aircraft Nut	8
18	Bushing	2
19	M10 x 2 1/2" Allen Bolt	2
20	M10 x 4 3/8" Allen Bolt	2
21	Ø 3/4" Washer	2
22	Cable Strap	1
23	Axle End Cap	2

IMPEX INC.

LIMITED WARRANTY

IMPEX FITNESS PRODUCTS ("IMPEX") warrants this product to be free from defects in workmanship and material, under normal use and service conditions, for a period of 2 YEARS from the date of purchase. This warranty extends only to the original purchaser. IMPEX's obligation under this Warranty is limited to replacing or repairing, at IMPEX's option.

All returns must be pre-authorized by IMPEX. Pre-authorization may be obtained by calling IMPEX Customer Service Department at 1-800-999-8899. All freights on products returned to IMPEX must be prepaid by the customer. This warranty does not extend to any product or damage to a product caused by or attributable to freight damage, abuse, misuse, improper or abnormal usage or repairs not provided by an IMPEX authorized service center or for products used for heavy commercial or rental purposes. No other warranty beyond that specifically set forth above is authorized by IMPEX.

IMPEX is not responsible or liable for indirect, special or consequential damages arising out of or in connection with the use or performance of the product or other damages with respect to any economic loss, loss of property, loss of revenues or profits, loss of enjoyments or use, costs of removal, installation or other consequential damages or whatsoever natures. Some states do not allow the exclusion or limitation of incidental or consequential damages. Accordingly, the above limitation may not apply to you.

The warranty extended hereunder is in lieu of any and all other warranties and any implied warranties of merchantability or fitness for a particular purpose is limited in its scope and duration to the terms set forth herein. Some states do not allow limitations on how long an implied warranty lasts. Accordingly, the above limitation may not apply to you.

This warranty gives you specific legal right. You may also have other rights which vary from state to state. Register on-line at www.impex-fitness.com

IMPEX INC.
14777 Don Julian Rd.,
City of Industry, CA 91746

ORDERING REPLACEMENT PARTS

Replacement parts can be ordered by calling our Customer Service Department toll-free at **1-800-999-8899** during our regular business hours: Monday through Friday, 9 am until 5 pm Pacific standard time.

info@impex-fitness.com

When ordering replacement parts, always give the following information.

1. Model
2. Description of Part
3. Part Number
4. Date of Purchase

Free Manuals Download Website

<http://myh66.com>

<http://usermanuals.us>

<http://www.somanuals.com>

<http://www.4manuals.cc>

<http://www.manual-lib.com>

<http://www.404manual.com>

<http://www.luxmanual.com>

<http://aubethermostatmanual.com>

Golf course search by state

<http://golfingnear.com>

Email search by domain

<http://emailbydomain.com>

Auto manuals search

<http://auto.somanuals.com>

TV manuals search

<http://tv.somanuals.com>