

Grizzly *Industrial, Inc.*®

MODEL G0595 **Electric Chipper/Shredder** **OWNER'S MANUAL**



COPYRIGHT © NOVEMBER, 2005 BY GRIZZLY INDUSTRIAL, INC.
**WARNING: NO PORTION OF THIS MANUAL MAY BE REPRODUCED IN ANY SHAPE
OR FORM WITHOUT THE WRITTEN APPROVAL OF GRIZZLY INDUSTRIAL, INC.**
#EW7655 PRINTED IN CHINA



WARNING!

Some dust created by power sanding, sawing, grinding, drilling, and other construction activities contains chemicals known to the State of California to cause cancer, birth defects or other reproductive harm. Some examples of these chemical are:

- Lead from lead-based paints.
- Crystalline silica from bricks, cement and other masonry products.
- Arsenic and chromium from chemically-treated lumber.

Your risk from these exposures varies, depending on how often you do this type of work. To reduce your exposure to these chemicals: Work in a well ventilated area, and work with approved safety equipment, such as those dust masks that are specially designed to filter out microscopic particles.

WARNING

Safety labels warn about machine hazards and ways to prevent injury. The owner of this machine **MUST** maintain the original location and readability of the labels on the machine. If any label is removed or becomes unreadable, **REPLACE** that label before using the machine again. Contact Grizzly at (800) 523-4777 or www.grizzly.com to order new labels.

Table of Contents

INTRODUCTION.....	2
Foreword	2
Machine Data Sheet.....	2
Contact Info	2
Identification	3
SECTION 1: SAFETY	4
Safety Instructions for Machinery	4
Additional Safety Instructions for Chipper/Shredders	6
SECTION 2: CIRCUIT REQUIREMENTS	7
110V Operation	7
SECTION 3: SET UP	8
Set Up Safety	8
Unpacking	8
Site Considerations	8
Items Needed for Set Up	8
Inventory.....	9
Assembly.....	9
SECTION 4: OPERATIONS	10
Operation Safety	10
Safety Key.....	10
Chipping/Shredding.....	10
SECTION 5: MAINTENANCE	12
Visual Inspection	12
Cleaning	12
Replacing Knives	12
SECTION 6: SERVICE	13
Troubleshooting.....	13
Electrical Components	14
Wiring Diagram	15
Parts Breakdown.....	16
Parts List	17
WARRANTY AND RETURNS	18

INTRODUCTION

Foreword

We are proud to offer the Model G0595 Electric Chipper/Shredder. This machine is part of a growing Grizzly family of fine machinery. When used according to the guidelines set forth in this manual, you can expect years of trouble-free, enjoyable operation and proof of Grizzly's commitment to customer satisfaction.

We are pleased to provide this manual with the Model G0595. It was written to guide you through assembly, review safety considerations, and cover general operating procedures.

The specifications, drawings, and photographs illustrated in this manual represent the Model G0595 as supplied when the manual was prepared. For your convenience, we always keep current Grizzly manuals available on our website at www.grizzly.com. Any updates to your machine will be reflected in these manuals as soon as they are complete.

Contact Info

If you have any comments regarding this manual, please write to us at the address below:

Grizzly Industrial, Inc.
c/o Technical Documentation Manager
P.O. Box 2069
Bellingham, WA 98227-2069

We stand behind our machines. If you have any service questions or parts requests, please call or write us at the location listed below.

Grizzly Industrial, Inc.
1203 Lycoming Mall Circle
Muncy, PA 17756
Phone: (570) 546-9663
Fax: (800) 438-5901
E-Mail: techsupport@grizzly.com
Web Site: <http://www.grizzly.com>

Grizzly
Industrial, Inc.®

MACHINE DATA SHEET

Customer Service #: (570) 546-9663 • To Order Call: (800) 523-4777 • Fax #: (800) 438-5901

MODEL G0595 ELECTRIC CHIPPER/SHREDDER

Overall Dimensions:

Overall Dimensions 14¼"W x 21½"D x 36¼"H
Net Weight..... 58 lbs.

Capacities:

Maximum Diameter of Wood..... 1"

Motor:

Type 2 HP, 110V, 14.5A, Single-Phase, ODP

General Construction:

Body Steel
Hopper..... Plastic

Specifications, while deemed accurate, are not guaranteed.



Identification



Figure 1. Chipper/shredder identification.

Machine Identification (Figures 1 and 2)

- A. Hopper
- B. Motor
- C. Chip Outlet
- D. Cover Release Knobs
- E. Impeller
- F. Blades
- G. Reset Button
- H. ON/OFF switch

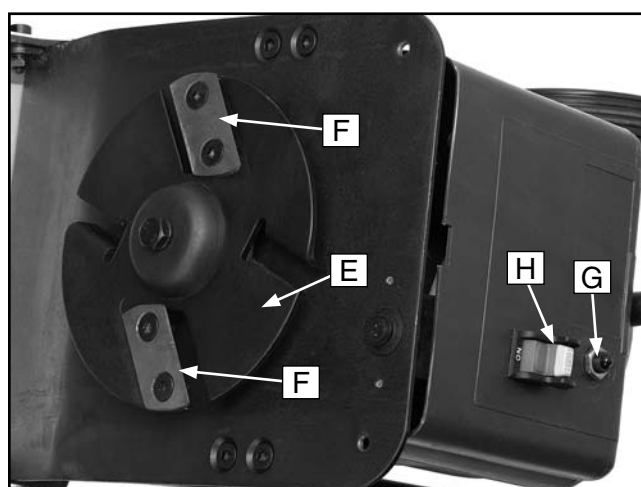



Figure 2. Inner components.

SECTION 1: SAFETY


WARNING

For Your Own Safety, Read Instruction Manual Before Operating this Machine

The purpose of safety symbols is to attract your attention to possible hazardous conditions. This manual uses a series of symbols and signal words which are intended to convey the level of importance of the safety messages. The progression of symbols is described below. Remember that safety messages by themselves do not eliminate danger and are not a substitute for proper accident prevention measures.

 **DANGER** Indicates an imminently hazardous situation which, if not avoided, WILL result in death or serious injury.

 **WARNING** Indicates a potentially hazardous situation which, if not avoided, COULD result in death or serious injury.

 **CAUTION** Indicates a potentially hazardous situation which, if not avoided, MAY result in minor or moderate injury. It may also be used to alert against unsafe practices.

NOTICE This symbol is used to alert the user to useful information about proper operation of the machine.

WARNING

Safety Instructions for Machinery

- 1. READ THROUGH THE ENTIRE MANUAL BEFORE STARTING MACHINERY.** Machinery presents serious injury hazards to untrained users.
- 2. ALWAYS USE ANSI APPROVED SAFETY GLASSES WHEN OPERATING MACHINERY.** Everyday eyeglasses only have impact resistant lenses, they are NOT safety glasses.
- 3. ALWAYS WEAR AN ANSI APPROVED RESPIRATOR WHEN OPERATING MACHINERY THAT PRODUCES DUST.** Wood dust is a carcinogen and can cause cancer and severe respiratory illnesses.
- 4. ALWAYS USE HEARING PROTECTION WHEN OPERATING MACHINERY.** Machinery noise can cause permanent hearing damage.
- 5. WEAR PROPER APPAREL. DO NOT** wear loose clothing, gloves, neckties, rings, or jewelry which may get caught in moving parts. Wear protective hair covering to contain long hair and wear non-slip footwear.
- 6. NEVER OPERATE MACHINERY WHEN TIRED, OR UNDER THE INFLUENCE OF DRUGS OR ALCOHOL.** Be mentally alert at all times when running machinery.



WARNING

Safety Instructions for Machinery

7. **ONLY ALLOW TRAINED AND PROPERLY SUPERVISED PERSONNEL TO OPERATE MACHINERY.** Make sure operation instructions are safe and clearly understood.
8. **KEEP CHILDREN AND VISITORS AWAY.** Keep all children and visitors a safe distance from the work area.
9. **MAKE WORKSHOP CHILD PROOF.** Use padlocks, master switches, and remove start switch keys.
10. **NEVER LEAVE WHEN MACHINE IS RUNNING.** Turn power **OFF** and allow all moving parts to come to a complete stop before leaving machine unattended.
11. **DO NOT USE IN DANGEROUS ENVIRONMENTS.** DO NOT use machinery in damp, wet locations, or where any flammable or noxious fumes may exist.
12. **KEEP WORK AREA CLEAN AND WELL LIT.** Clutter and dark shadows may cause accidents.
13. **USE A GROUNDED EXTENSION CORD RATED FOR THE MACHINE AMPERAGE.** Undersized cords overheat and lose power. Replace extension cords if they become damaged. DO NOT use extension cords for 220V machinery.
14. **ALWAYS DISCONNECT FROM POWER SOURCE BEFORE SERVICING MACHINERY.** Make sure switch is in OFF position before reconnecting.
15. **MAINTAIN MACHINERY WITH CARE.** Keep blades sharp and clean for best and safest performance. Follow instructions for lubricating and changing accessories.
16. **MAKE SURE GUARDS ARE IN PLACE AND WORK CORRECTLY BEFORE USING MACHINERY.**
17. **REMOVE ADJUSTING KEYS AND WRENCHES.** Make a habit of checking for keys and adjusting wrenches before turning machinery **ON**.
18. **CHECK FOR DAMAGED PARTS BEFORE USING MACHINERY.** Check for binding and alignment of parts, broken parts, part mounting, loose bolts, and any other conditions that may affect machine operation. Repair or replace damaged parts.
19. **USE RECOMMENDED ACCESSORIES.** Refer to the instruction manual for recommended accessories. The use of improper accessories may cause risk of injury.
20. **DO NOT FORCE MACHINERY.** Work at the speed for which the machine or accessory was designed.
21. **SECURE WORKPIECE.** Use clamps or a vise to hold the workpiece when practical. A secured workpiece protects your hands and frees both hands to operate the machine.
22. **DO NOT OVERREACH.** Keep proper footing and balance at all times.
23. **MANY MACHINES WILL EJECT THE WORKPIECE TOWARD THE OPERATOR.** Know and avoid conditions that cause the workpiece to "kickback."
24. **ALWAYS LOCK MOBILE BASES (IF USED) BEFORE OPERATING MACHINERY.**
25. **BE AWARE THAT CERTAIN WOODS MAY CAUSE AN ALLERGIC REACTION** in people and animals, especially when exposed to fine dust. Make sure you know what type of wood dust you will be exposed to and always wear an approved respirator.



WARNING

Additional Safety Instructions for Chipper/Shredders

- 1. READ THIS ENTIRE MANUAL BEFORE OPERATING MACHINE:** This manual contains proper operating and safety instructions for this chipper/shredder.
- 2. SAFETY EQUIPMENT:** Wear eye and ear protection, and gloves when operating a chipper/shredder. Make sure any bystanders are also wearing safety equipment.
- 3. HAND SAFETY:** DO NOT put hands or other body parts into hopper or outlet while the blades are turning. The chipper/shredder can drag you into the blade, causing amputation of fingers, hands or other body parts.
- 4. CLOTHING:** DO NOT wear loose clothing, neckties, scarves, or jewelry which may get caught in moving parts. DO NOT wear clothing or gloves with pull ties or straps. This type of clothing could get tangled with material that is being shredded, pulling you into the chipper/shredder.
- 5. OPERATING LOCATION:** Set up the chipper/shredder on firm, level grass or dirt. DO NOT set up the chipper/shredder on gravel, asphalt, concrete, or stone. The chips are expelled from the machine with enough force to ricochet off of hard surfaces and cause serious injury.
- 6. SECURE FOOTING:** Placing the chipper/shredder on a slope or slippery surface may cause the operator to fall into the machine, causing an amputation if an arm accidentally goes into the hopper. Wear non-slip, closed-toed shoes or boots to maintain secure footing.
- 7. JAMS AND CLOGGING:** Turn the chipper/shredder **OFF**, allow the blades to stop rotating, and unplug the machine before attempting to free a jam or clog.
- 8. FEEDING MATERIAL:** Hold material loosely and allow the chipper/shredder to draw it in. The machine may draw material in quickly, drawing your hand in if you are holding tightly. If the machine begins to make an unusual noise or vibration, immediately shut the chipper/shredder **OFF**.
- 10. TURN OFF CHIPPER/SHREDDER:** Turn **OFF** the machine, allow the blades to come to a complete stop, and disconnect the machine from power before moving the machine, unclogging the inlets or outlets, or performing maintenance and repairs.
- 11. STARTING THE CHIPPER/SHREDDER:** Make sure the hopper is empty when starting the machine. If there is material in the hopper when starting, the motor will overload the breaker.

WARNING

Like all machinery there is potential danger when operating this machine. Accidents are frequently caused by lack of familiarity or failure to pay attention. Use this machine with respect and caution to lessen the possibility of operator injury. If normal safety precautions are overlooked or ignored, serious personal injury may occur.

CAUTION

No list of safety guidelines can be complete. Every environment is different. Always consider safety first, as it applies to your individual working conditions. Use this and other machinery with caution and respect. Failure to do so could result in serious personal injury, damage to equipment, or poor work results.



SECTION 2: CIRCUIT REQUIREMENTS

110V Operation

⚠️ WARNING

Serious personal injury could occur if you connect the machine to the power source before you have completed the set up process. **DO NOT** connect the machine to the power source until instructed to do so.

Amperage Draw

The Model G0595 motor draws the following amps under maximum load:

Motor Draw 14.5 Amps

Circuit Recommendations

We recommend connecting this machine to a dedicated circuit with a verified ground, using the circuit breaker size given below. Never replace a circuit breaker with one of higher amperage without consulting a qualified electrician to ensure compliance with wiring codes. **If you are unsure about the wiring codes in your area or you plan to connect your machine to a shared circuit, you may create a fire hazard—consult a qualified electrician to reduce this risk.**

Circuit Breaker..... 20 Amps

Plug/Receptacle Type

Included Plug Type..... NEMA 5-15

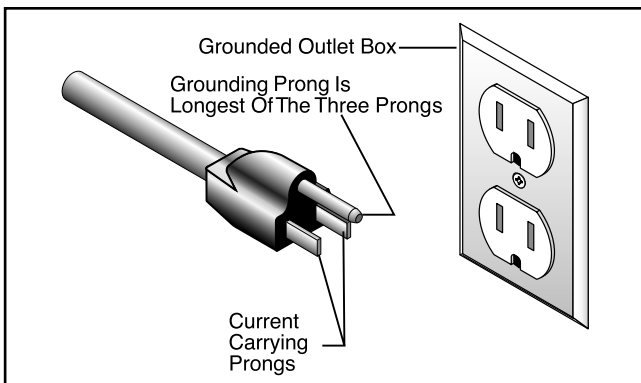

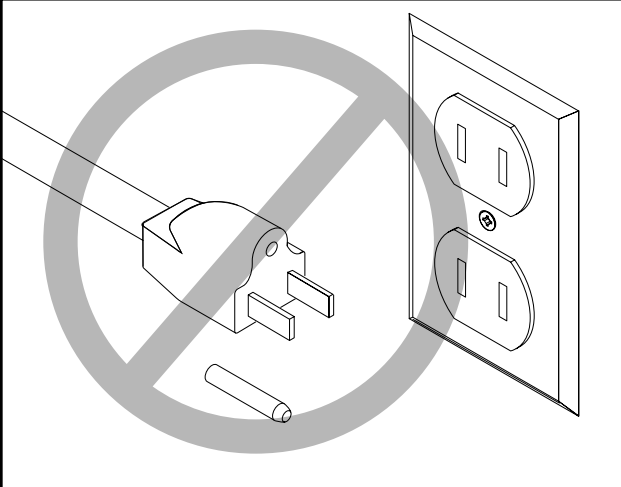


Figure 3. Typical type 5-15 plug and receptacle.



⚠️ WARNING

Electrocution or fire could result if this machine is not grounded correctly or if your electrical configuration does not comply with local and state codes. Ensure compliance by checking with a qualified electrician!



⚠️ CAUTION

This machine must have a ground prong in the plug to help ensure that it is grounded. **DO NOT** remove ground prong from plug to fit into a two-pronged outlet! If the plug will not fit the outlet, have the proper outlet installed by a qualified electrician.

Extension Cords

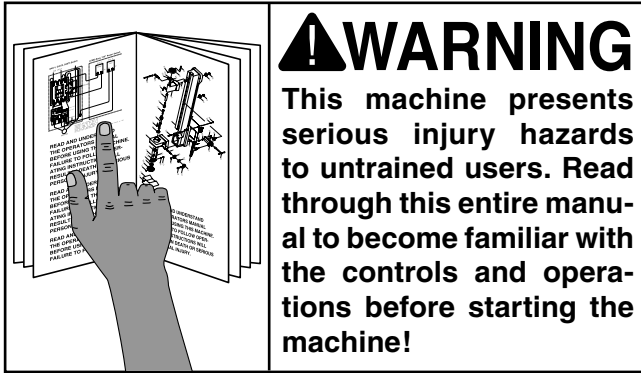
We do not recommend the use of extension cords, if you find it absolutely necessary:

- Use at least a 12 gauge cord that does not exceed 50 feet in length!
- The extension cord must also contain a ground wire and plug pin.
- A qualified electrician **MUST** size cords over 50 feet long to prevent motor damage.



SECTION 3: SET UP

Set Up Safety



Unpacking

The Model G0595 was carefully packed when it left our warehouse. If you discover the machine is damaged after you have signed for delivery, please immediately call Customer Service at (570) 546-9663 for advice.

Save the containers and all packing materials for possible inspection by the carrier or its agent. Otherwise, filing a freight claim can be difficult.

When you are completely satisfied with the condition of your shipment, you should inventory the contents.

Site Considerations

Location

The chipper/shredder must be placed on a firm, flat grass or dirt surface to prevent the machine from tipping. DO NOT place the machine on concrete, asphalt, or other hard surfaces. The chips could bounce up from the hard surface and cause injury. If possible, situate the chipper/shredder so that an extension cord is not necessary.

Working Clearances

Consider the length of the material to be processed through the machine and make sure that there is enough height above the chipper/shredder to accommodate the material.

Make sure the unit is located close to the area where the chips are going to be used to reduce carrying.

Stay clear of the discharge area. Make sure all bystanders, children, pets, or objects that you do not want damaged or covered in chips, are clear of the discharge area.

Items Needed for Set Up

The following items are needed to complete the set up process, but are not included with your machine:

Description	Qty
• Phillips Screwdriver	1
• Hex Wrench 6mm	1



Inventory

After all the parts have been removed from the box, you should have the following items:

Inventory (Figure 4)	Qty
A. Chipper/Shredder.....	1
B. Wheel Assembly.....	2
C. Hopper.....	1



Figure 4. Model G0595 inventory.

Hardware (Not Shown)

- Phillips Head Screw M5-.8 x 12 5
- Flat Washers 5mm 5
- Lock Washers 5mm..... 5
- Flat Hd Scr M8-1.25 x 35 11

In the event that any nonproprietary parts are missing (e.g. a nut or a washer), we would be glad to replace them, or for the sake of expediency, replacements can be obtained at your local hardware store.

Assembly

To assemble the chipper/shredder:

1. Tip the chipper/shredder over and attach the wheels with the flat head screws.
2. Set the chipper shredder upright, insert the funnel into the socket and secure it with the phillips head screws, flat washers and lock washers (see Figure 5).



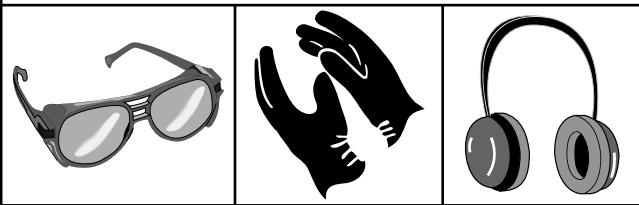
Figure 5. Assembled chipper/shredder.

SECTION 4: OPERATIONS

Operation Safety

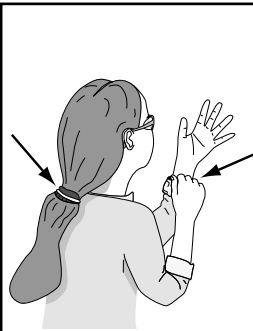
⚠️ WARNING

Damage to your eyes, hands, and ears could result from using this machine without proper protective gear. Always wear safety glasses, hearing protection, and leather gloves when operating this machine.



⚠️ WARNING

Loose hair and clothing could get caught in machinery and cause serious personal injury. Keep loose clothing and long hair away from moving machinery.



Safety Key

To disable the switch, remove the safety key (Figure 6) from the paddle switch.

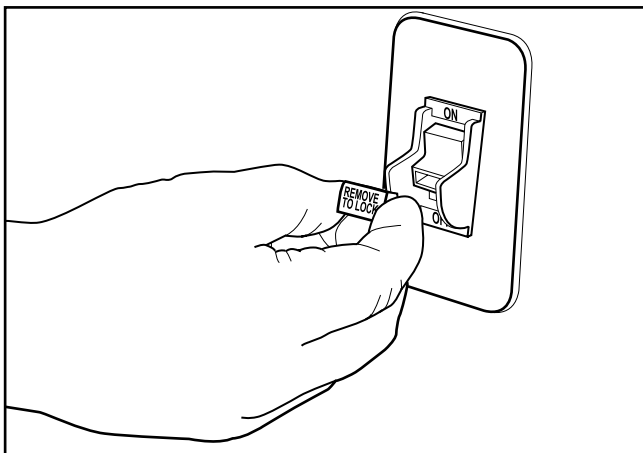


Figure 6. Removing key to disable the switch.

Chipping/Shredding

Understand and follow the safety precautions listed in SECTION 1: SAFETY before operation.

Inspect material for nails, rocks, string or rope, or other objects that could damage the blade or become tangled in the impeller before inserting it into the chipper/shredder.

To operate the chipper/shredder:

1. Place the chipper/shredder on a flat, firm dirt or grass surface and point the outlet in a safe direction.
2. Plug the chipper/shredder into the power source.
3. Put on eye and ear protection, and gloves, then turn the chipper/shredder **ON**.

To chip branches:

1. Remove twigs that may catch on the edges of the hopper from the main branch.
2. Place branches up to 1" diameter (approximately the thickness of your thumb) into the hopper and allow the blades to draw the branch into the hopper (see Figure 7).



Figure 7. Chipping branches.



To shred twigs, leaves, and brush:

1. Slowly pour the material into the hopper (see **Figure 8**). DO NOT try to stuff too much material in at one time or the machine will jam.



Figure 8. Shredding leaves.

2. Use a 1" diameter branch to push the material into the hopper if necessary (see **Figure 9**). DO NOT use your hands!



Figure 9. Stuffing leaves.

Chipping/Shredding Tips:

- Feed material into the hopper slowly. If the motor begins to bog down, you are feeding too fast.
- Avoid chipping material in excess of 1" diameter. Large branches will cause the motor to stall and trip a breaker.

- Chipping wood when it is green is easier on the machine. The blades will stay sharper longer.
- Roots and dirty material will dull or damage the blades.
- Remove the chips often. Allowing the chips to pile up to the outlet will cause the outlet to clog.
- The chipper/shredder will work best if the blades are sharp. Rotate, sharpen, or replace the blades as soon as chipper/shredder performance begins to deteriorate.

The motor on the chipper/shredder has an overload breaker that prevents damage to the motor. When the machine becomes clogged or overworked the overload breaker automatically turns the motor **OFF**.

To reset the motor:

1. TURN THE ON/OFF SWITCH TO **OFF**, ALLOW ALL MOVING PARTS TO COME TO A COMPLETE STOP, AND UNPLUG THE CHIPPER/SHREDDER.
2. Open the cover and remove all material from the hopper.
3. Plug the chipper/shredder back into the power source.
4. Press the reset button below the ON/OFF switch, then turn the chipper/shredder **ON**.

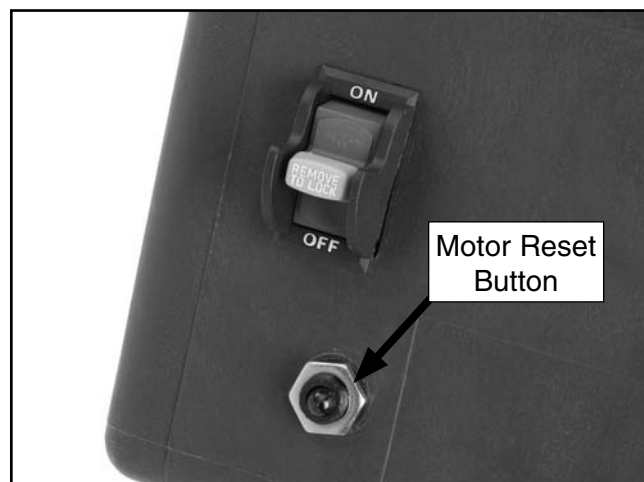


Figure 10. Motor reset button.

SECTION 5: MAINTENANCE

⚠️ WARNING

Turn OFF the machine, allow all moving parts to come to a complete stop, and unplug the machine before moving, emptying the bag, unclogging the inlets or outlets, or performing maintenance and repairs.

Visual Inspection

Before and after using the chipper/shredder, closely inspect the machine for loose parts and damage.

- Check the hopper and cover for cracks, holes, and loose bolts.
- Check the entire machine for loose bolts or screws.
- Check the blades for cracks and dings.

Cleaning

Clean the Model G0595 after each use. Brush off or vacuum wood chips and wipe off the remaining dust from the exterior of the machine with a dry cloth. DO NOT rinse off the chipper/shredder with water. Remove any chips or debris from the hopper and the discharge chute.

It is much harder to clean the machine if you allow it to sit for a while after use. You may need to use a blade cleaner to remove the built up resin and pitch from the blade and impeller. Blade cleaners are available from Grizzly Industrial or at most hardware stores.

Replacing Knives

Sharpen or replace the knives as soon as the chipping performance begins to deteriorate, or if you notice dings, chips, or cracks.

Tools Needed	Qty
Hex Wrench 6mm.....	1

To perform this procedure:

1. TURN OFF THE MACHINE, ALLOW ALL MOVING PARTS TO COME TO A COMPLETE STOP, AND UNPLUG THE CHIPPER/SHREDDER.
2. Loosen the cover release knobs and tip up the cover.
3. Remove the knives as shown in **Figure 11**.



Figure 11. Chipper knives.

4. Re-install the knives with the sharp edge exposed. If all the edges are dull, have the original knives professionally sharpened, or order a replacement set.
5. Tilt the cover into place and secure it with the cover release knobs.



SECTION 6: SERVICE

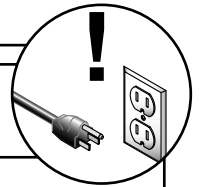
This section is provided for your convenience—it is not a substitute for the Grizzly Service Department. If you need help troubleshooting, you need replacement parts, or you are unsure of how to perform the procedures in this section, then feel free to call our Technical Support at (570) 546-9663.

WARNING

Turn OFF the machine, allow all moving parts to come to a complete stop, and unplug the machine before performing maintenance and repairs.

Troubleshooting

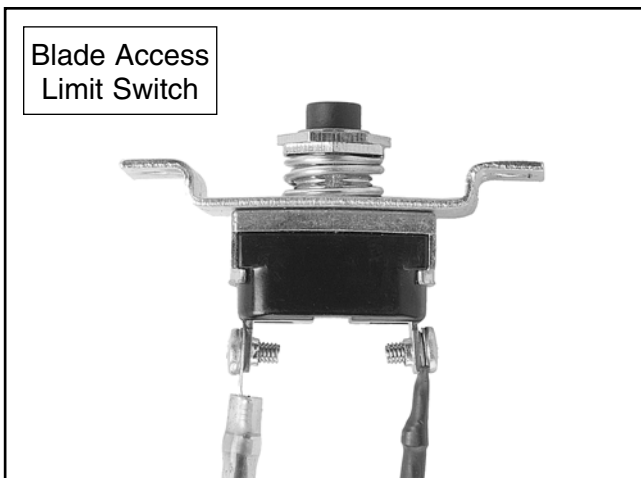
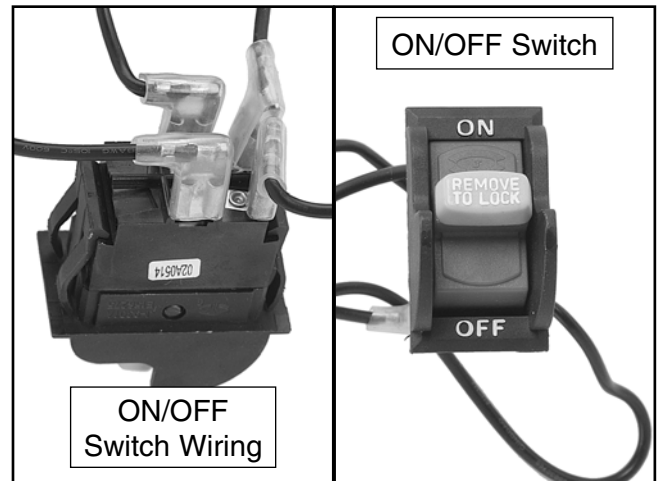
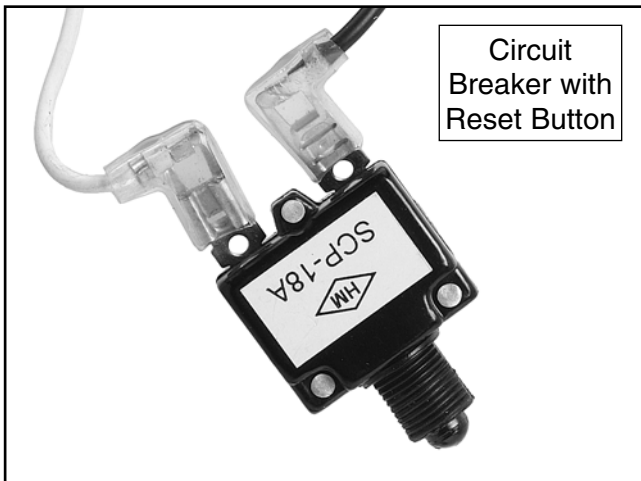
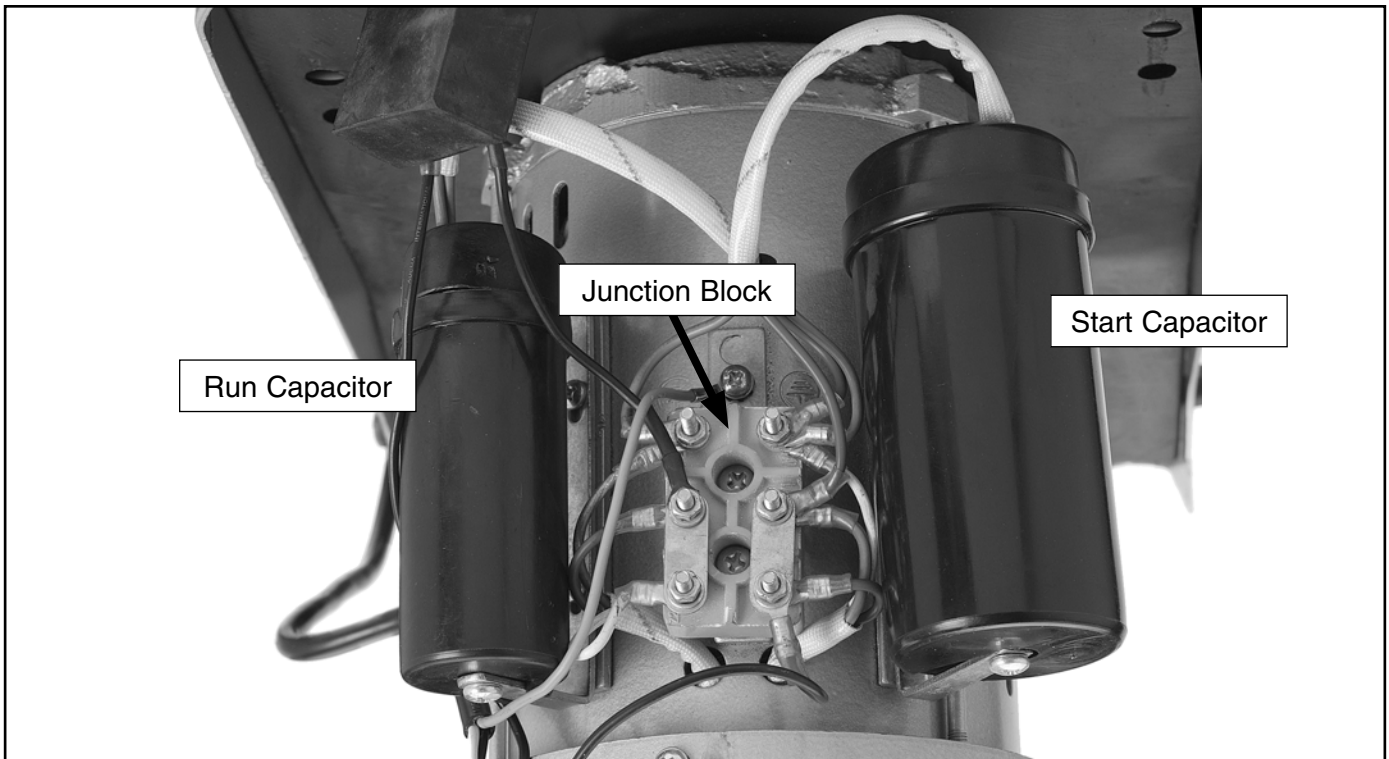
Motor & Electrical

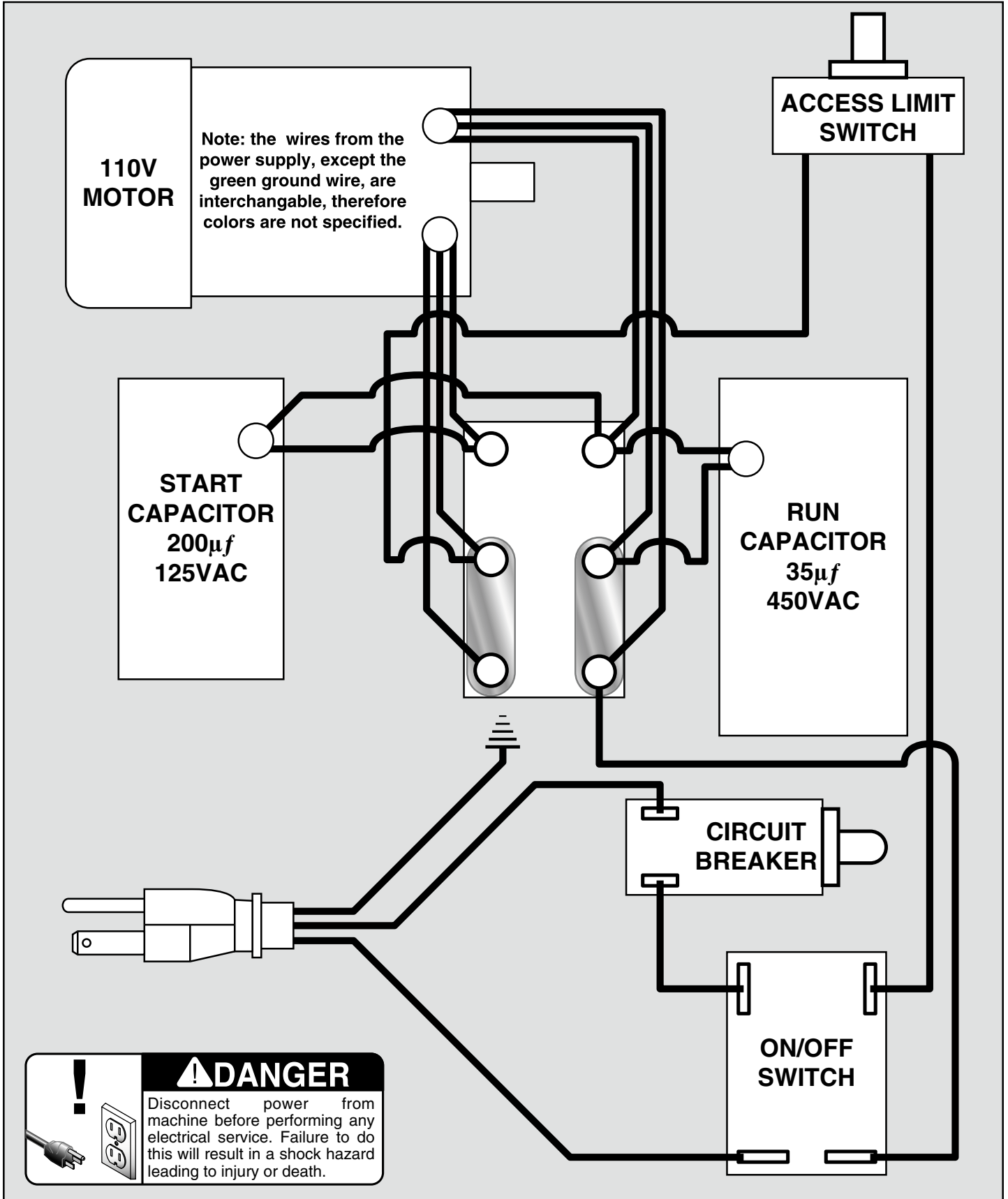


Symptom	Possible Cause	Possible Solution
Machine does not start or a breaker trips.	<ol style="list-style-type: none"> 1. Stick or debris jammed in blade. 2. Internal breaker has tripped. 3. Power supply is faulty, or is switched OFF. 4. Plug or receptacle is at fault or wired incorrectly. 5. Start capacitor is faulty. 	<ol style="list-style-type: none"> 1. Unplug the chipper/shredder and clean out the machine. 2. Press the reset button below the ON/OFF switch. 3. Make sure all hot lines and grounds are operational and have correct voltage on all legs. 4. Test power plug and receptacle for good contact and correct wiring. 5. Test and replace capacitor as required (see photo, Page 14).
Machine has vibration or noisy operation.	<ol style="list-style-type: none"> 1. Motor or component is loose. 2. Motor fan is rubbing on fan cover. 3. Motor bearings are at fault. 	<ol style="list-style-type: none"> 1. Inspect, replace for stripped or damaged bolts/nuts, and re-tighten with thread locking fluid. 2. Replace dented fan cover, and replace loose or damaged fan. 3. Check bearings, replace motor or bearings as required.
Motor overheats.	<ol style="list-style-type: none"> 1. Motor overloaded. 2. Air circulation through the motor restricted. 	<ol style="list-style-type: none"> 1. Reduce load on motor. 2. Clean off motor to provide normal air circulation.
Machine stalls or is underpowered.	<ol style="list-style-type: none"> 1. Feeding material into the hopper too quickly. 2. Machine is undersized for the task. 3. Motor has overheated. 4. Low power supply voltage. 5. Motor bearings are at fault. 	<ol style="list-style-type: none"> 1. Slow down the feed rate. 2. DO NOT feed any material in excess of 1" into the hopper. Use a slow and steady feed rate. 3. Unobstructed motor cooling air flow, let motor cool, and reduce workload on machine. 4. Make sure all hot lines and grounds are operational and have correct voltage on all legs. 5. Rotate motor shaft for noisy or burnt bearings, repair/replace as required.



Electrical Components





Parts Breakdown

Grizzly Model G0595	
MODEL G0595 CHIPPER/SHREDDER	
SPECIFICATIONS	WARNING!
MODEL NUMBER: G0595 SERIAL NUMBER: _____ DATE: _____ MANUFACTURED BY: Grizzly Industrial, Inc. MADE IN: China	FAILURE TO FOLLOW THESE WARNINGS MAY RESULT IN SERIOUS PERSONAL INJURY. 1. READ AND UNDERSTAND THE SAFETY WARNINGS BEFORE OPERATING THIS MACHINE. 2. ALWAYS WEAR EYE AND EAR PROTECTION. 3. KEEP HANDS AWAY FROM THE CHIPPING AND SHREDDING CHUTE WHEN MACHINE IS OPERATING. 4. KEEP ALL CHILDREN AWAY FROM THIS MACHINE. 5. DO NOT REAR LOADS ON THE MACHINE. SECURE LOADS AND BUTTON ALL LOADS BEFORE INPUT. 6. DO NOT OPERATE UNDER ANY CIRCUMSTANCES THAT MAY BE DANGEROUS. 7. ALWAYS WEAR SAFETY GLASSES AND SAFETY GLASSES ARE REQUIRED. 8. ALWAYS WEAR EYE AND EAR PROTECTION. 9. ALWAYS WEAR EYE AND EAR PROTECTION. 10. ALWAYS WEAR EYE AND EAR PROTECTION. 11. ALWAYS WEAR EYE AND EAR PROTECTION. 12. ALWAYS WEAR EYE AND EAR PROTECTION. 13. ALWAYS WEAR EYE AND EAR PROTECTION. 14. ALWAYS WEAR EYE AND EAR PROTECTION. 15. ALWAYS WEAR EYE AND EAR PROTECTION. 16. ALWAYS WEAR EYE AND EAR PROTECTION.

WARNING!
DO NOT put hands or any other body parts into the hopper while the blades are turning.

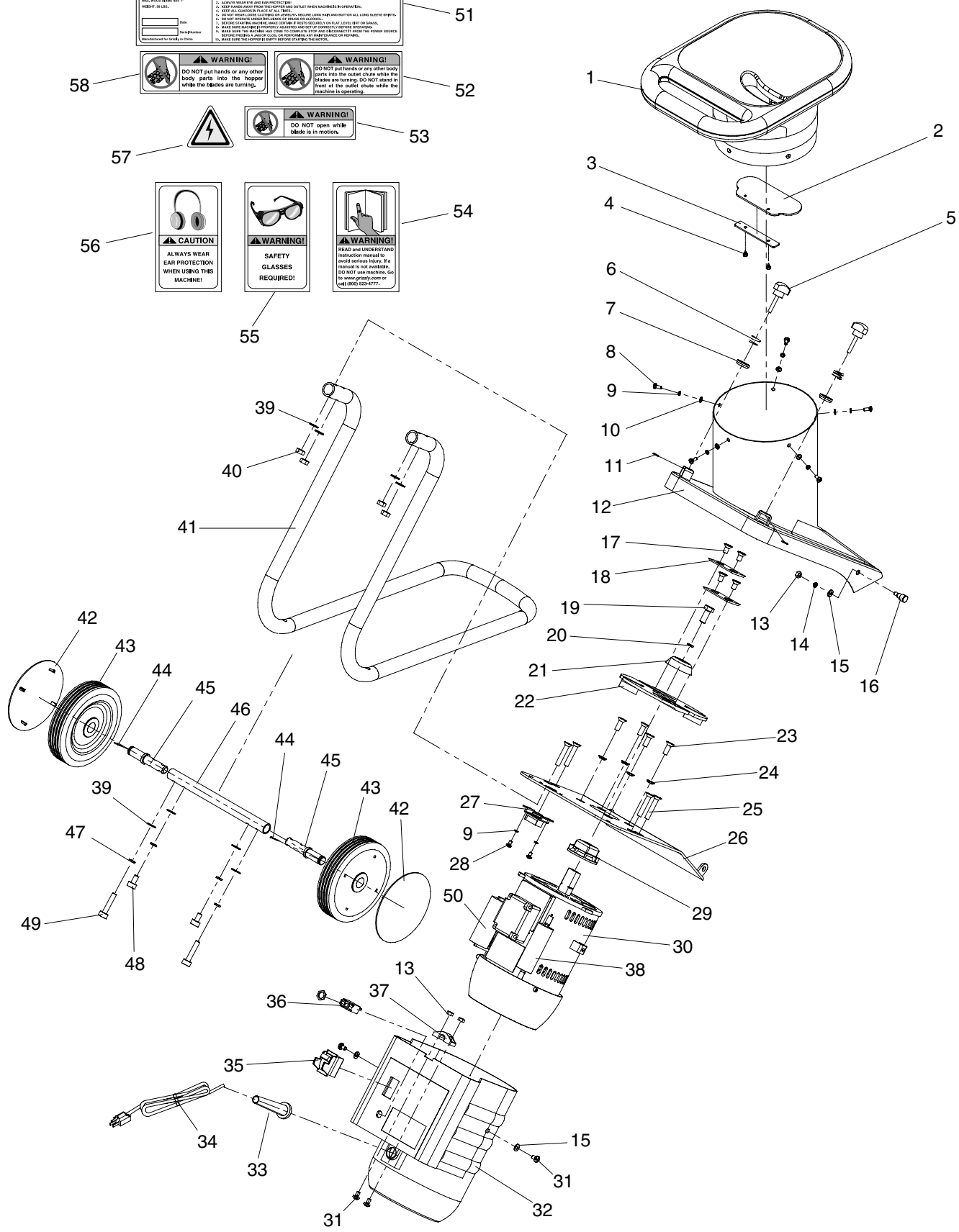
WARNING!
DO NOT put hands or any other body parts into the outlet chute while the machine is operating.

WARNING!
DO NOT open while blade is in motion.

CAUTION
ALWAYS WEAR EAR PROTECTION WHEN USING THIS MACHINE!

WARNING!
SAFETY GLASSES REQUIRED!

WARNING!
READ and UNDERSTAND instruction manual to avoid serious injury. If a manual is not available, DO NOT use machine. Go to www.grizzly.com or call 800-325-8777.



Parts List

REF	PART #	DESCRIPTION
1	P0595001	HOPPER
2	P0595002	BAFFLE
3	P0595003	BACKING PLATE
4	PHTEK15M	TAP SCREW M4 X 10
5	P0595005	LOCK KNOB
6	P0595006	COMPRESSION SPRING
7	P0595007	SPRING BOWL
8	PS08M	PHLP HD SCR M5-.8 X 12
9	PLW01M	LOCK WASHER 5MM
10	PW02M	FLAT WASHER 5MM
11	PEC09M	E-CLIP 6MM
12	P0595012	CHUTE
13	PN01M	HEX NUT M6-1
14	PLW03M	LOCK WASHER 6MM
15	PW03M	FLAT WASHER 6MM
16	P0595016	PIVOT PIN
17	PFH28M	FLAT HD SCR M8-1.25 X 10
18	P0595018	BLADE
19	PB32M	HEX BOLT M10-1.5 X 25
20	PLW06M	LOCK WASHER 10MM
21	P0595021	LOCK CAP
22	P0595022	BLADE SUPPORT
23	PFH48M	FLAT HD SCR M8-1.25 X 18
24	PTLW07M	EXT TOOTH WASHER 8MM
25	PFH36M	FLAT HD SCR M8-1.25 X 35
26	P0595026	CONNECTION PLATE
27	P0595027	BLADE ACCESS LIMIT SWITCH
28	PS05M	PHLP HD SCR M5-.8 X 8
29	P0595029	BLADE SUPPORT HUB

REF	PART #	DESCRIPTION
30	P0595030	MOTOR
31	PS14M	PHLP HD SCR M6-1 X 12
32	P0595032	MOTOR GUARD
33	P0595033	CORD WRAP
34	P0595034	CORD & PLUG
35	G8989	TOGGLE SAFETY SWITCH W/KEY
36	P0595036	CIRCUIT BREAKER
37	P0595037	WIRE CLAMP
38	P0595038	CAPACITOR 200MFD 125V
39	PW01M	FLAT WASHER 8MM
40	PN01M	HEX NUT M6-1
41	P0595041	STAND
42	P0595042	WHEEL COVER
43	P0595043	WHEEL
44	P0595044	COTTER PIN 2 X 20
45	P0595045	AXLE
46	P0595046	AXLE PIPE
47	PLW04M	LOCK WASHER 8MM
48	PFH11M	FLAT HD SCR M8-1.25 X 15
49	PFH42M	FLAT HD SCR M8-1.25 X 40
50	P0595050	CAPACITOR 35 MFD 450V
51	P0595051	G0595 ID LABEL
52	P0595052	OUTLET WARNING LABEL
53	P0595053	COVER WARNING LABEL
54	PLABEL-12	READ MANUAL 2" X 3 5/16"
55	PLABEL-11	SAFETY GLASSES 2" X 3 5/16"
56	PLABEL-15	EAR PROTECTION 2"X3 5/16"H
57	PLABEL-14	ELECTRICITY LABEL
58	P0595058	HOPPER WARNING LABEL

WARNING

Safety labels warn about machine hazards and ways to prevent injury. The owner of this machine **MUST** maintain the original location and readability of the labels on the machine. If any label is removed or becomes unreadable, **REPLACE** that label before using the machine again. Contact Grizzly at (800) 523-4777 or www.grizzly.com to order new labels.



WARRANTY AND RETURNS

Grizzly Industrial, Inc. warrants every product it sells for a period of **1 year** to the original purchaser from the date of purchase. This warranty does not apply to defects due directly or indirectly to misuse, abuse, negligence, accidents, repairs or alterations or lack of maintenance. This is Grizzly's sole written warranty and any and all warranties that may be implied by law, including any merchantability or fitness, for any particular purpose, are hereby limited to the duration of this written warranty. We do not warrant or represent that the merchandise complies with the provisions of any law or acts unless the manufacturer so warrants. In no event shall Grizzly's liability under this warranty exceed the purchase price paid for the product and any legal actions brought against Grizzly shall be tried in the State of Washington, County of Whatcom.

We shall in no event be liable for death, injuries to persons or property or for incidental, contingent, special, or consequential damages arising from the use of our products.

To take advantage of this warranty, contact us by mail or phone and give us all the details. We will then issue you a "Return Number," which must be clearly posted on the outside as well as the inside of the carton. We will not accept any item back without this number. Proof of purchase must accompany the merchandise.

The manufacturers reserve the right to change specifications at any time because they constantly strive to achieve better quality equipment. We make every effort to ensure that our products meet high quality and durability standards and we hope you never need to use this warranty.

Please feel free to write or call us if you have any questions about the machine or the manual.

Thank you again for your business and continued support. We hope to serve you again soon.





WARRANTY CARD

Name _____
 Street _____
 City _____ State _____ Zip _____
 Phone # _____ Email _____ Invoice # _____
 Model # _____ Order # _____ Serial # _____

The following information is given on a voluntary basis. It will be used for marketing purposes to help us develop better products and services. **Of course, all information is strictly confidential.**

1. How did you learn about us?

Advertisement Friend Catalog
 Card Deck Website Other:

2. Which of the following magazines do you subscribe to?

<input type="checkbox"/> Cabinet Maker	<input type="checkbox"/> Popular Mechanics	<input type="checkbox"/> Today's Homeowner
<input type="checkbox"/> Family Handyman	<input type="checkbox"/> Popular Science	<input type="checkbox"/> Wood
<input type="checkbox"/> Hand Loader	<input type="checkbox"/> Popular Woodworking	<input type="checkbox"/> Wooden Boat
<input type="checkbox"/> Handy	<input type="checkbox"/> Practical Homeowner	<input type="checkbox"/> Woodshop News
<input type="checkbox"/> Home Shop Machinist	<input type="checkbox"/> Precision Shooter	<input type="checkbox"/> Woodsmith
<input type="checkbox"/> Journal of Light Cont.	<input type="checkbox"/> Projects in Metal	<input type="checkbox"/> Woodwork
<input type="checkbox"/> Live Steam	<input type="checkbox"/> RC Modeler	<input type="checkbox"/> Woodworker West
<input type="checkbox"/> Model Airplane News	<input type="checkbox"/> Rifle	<input type="checkbox"/> Woodworker's Journal
<input type="checkbox"/> Modeltec	<input type="checkbox"/> Shop Notes	<input type="checkbox"/> Other:
<input type="checkbox"/> Old House Journal	<input type="checkbox"/> Shotgun News	

3. What is your annual household income?

\$20,000-\$29,000 \$30,000-\$39,000 \$40,000-\$49,000
 \$50,000-\$59,000 \$60,000-\$69,000 \$70,000+

4. What is your age group?

20-29 30-39 40-49
 50-59 60-69 70+

5. How long have you been a woodworker/metalworker?

0-2 Years 2-8 Years 8-20 Years 20+ Years

6. How many of your machines or tools are Grizzly?

0-2 3-5 6-9 10+

7. Do you think your machine represents a good value? Yes No

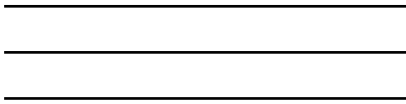
8. Would you recommend Grizzly Industrial to a friend? Yes No

9. Would you allow us to use your name as a reference for Grizzly customers in your area?
Note: We never use names more than 3 times. Yes No

10. Comments: _____

CUT ALONG DOTTED LINE

FOLD ALONG DOTTED LINE



Place
Stamp
Here



GRIZZLY INDUSTRIAL, INC.
P.O. BOX 2069
BELLINGHAM, WA 98227-2069



FOLD ALONG DOTTED LINE

Send a Grizzly Catalog to a friend:

Name _____
Street _____
City _____ State _____ Zip _____

TAPE ALONG EDGES--PLEASE DO NOT STAPLE

grizzly.com

TOOL WEBSITE

Buy Direct and Save with Grizzly® – Trusted, Proven and a Great Value!

Visit Our Website Today And Discover
Why Grizzly® Is The Industry Leader!

- SECURE ORDERING
- ORDERS SHIPPED WITHIN 24 HOURS
- E-MAIL RESPONSE WITHIN ONE HOUR

-OR-

Call Today For A **FREE**
Full Color Catalog

1-800-523-4777



Free Manuals Download Website

<http://myh66.com>

<http://usermanuals.us>

<http://www.somanuals.com>

<http://www.4manuals.cc>

<http://www.manual-lib.com>

<http://www.404manual.com>

<http://www.luxmanual.com>

<http://aubethermostatmanual.com>

Golf course search by state

<http://golfingnear.com>

Email search by domain

<http://emailbydomain.com>

Auto manuals search

<http://auto.somanuals.com>

TV manuals search

<http://tv.somanuals.com>