



MODEL T25448/T25449 DUST COLLECTOR REMOTE SWITCH INSTRUCTIONS

For questions or help with this product contact Tech Support at (570) 546-9663 or techsupport@grizzly.com

Introduction

The Model T25448/T25449 Dust Collector Remote Switch (**Figure 1**) allows you to remotely turn a dust collector **ON/OFF** from a distance of up to 75 feet.

Read and understand this entire document before installation to make sure this switch box fits the intended application.

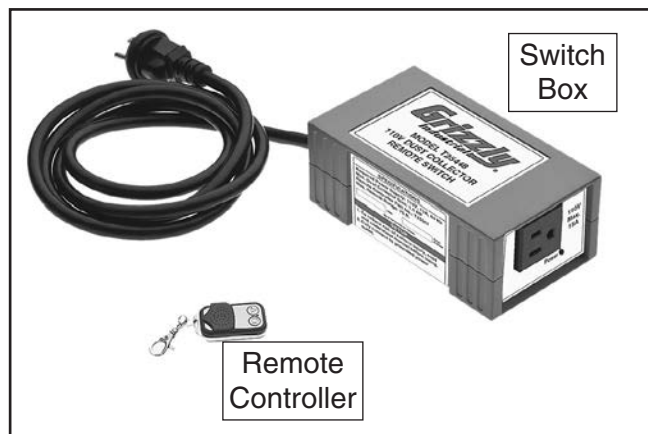


Figure 1. Model T25448/T25449 remote switch components.

Specifications

Model T25448:

Power Supply120V, 15A, 60 Hz
Outlet TypeNEMA 5-15
Max. Dust Collector HP..... 1.5 HP

Model T25449:

Power Supply 240V, 20A, 60 Hz
Outlet TypeNEMA 6-20
Max. Dust Collector HP..... 3 HP

Remote BatteryType 23AE, 12V

Communication Type.....Radio Frequency (RF)

Max. Communication Distance 75 ft.

⚠ CAUTION

To ensure safe operation:

- Only connect the switch box to power supply that meets the listed specifications.
- Do not connect the switch box to a dust collector with a motor that exceeds the listed specifications.

NOTICE

- This remote switch is **ONLY** designed to be used on dust collectors with standard ON/OFF toggle or push-button switches—not with magnetic switches.
- If you are unsure about the type of dust collector switch you have, contact the dust collector manufacturer for more information.
- Using this switch box for applications other than dust collectors may cause the unit to fail and will void the warranty.

NOTICE

Replacement remote controllers (Model T25507) can be purchased by contacting Grizzly at (800) 523-4777. Before the new remote controller can be used, the switch box must be programmed to work with it (refer to *Programming Switch Box* on Page 2 for detailed instructions).

COPYRIGHT © FEBRUARY, 2013 BY GRIZZLY INDUSTRIAL, INC.
NO PORTION OF THIS MANUAL MAY BE REPRODUCED IN ANY SHAPE
OR FORM WITHOUT THE WRITTEN APPROVAL OF GRIZZLY INDUSTRIAL, INC.
FOR MODELS MANUFACTURED SINCE 8/13 #TS15583 PRINTED IN TAIWAN

Installation

1. Place the switch box in a dry, protected location within reach of the power receptacle and the dust collector power cord.
2. Plug the switch box into the proper power receptacle (see **Figures 2–3**).

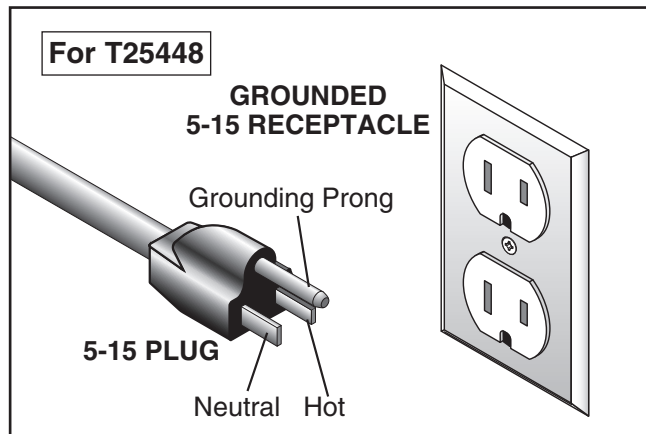


Figure 2. NEMA 5-15 plug and receptacle for Model T25448.

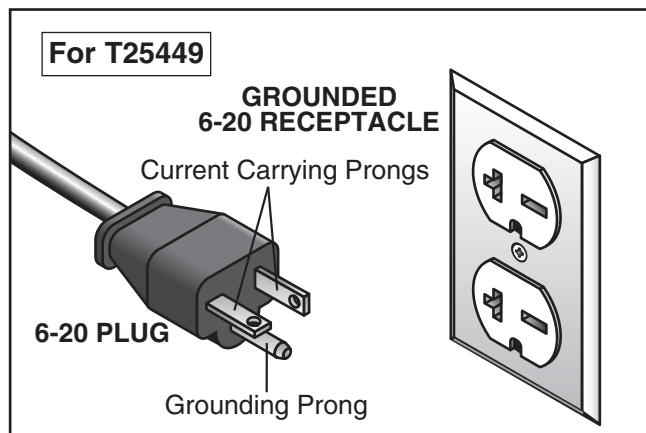


Figure 3. NEMA 6-20 plug and receptacle for Model T25449.

3. Perform the following **Programming Switch Box** procedure to make sure the remote controller will operate the switch box.
4. Make sure the dust collector ON/OFF switch is turned **OFF**, then plug the dust collector into the switch box.

Programming Switch Box

You can program one switch box to operate with several remote controllers and one remote controller to operate several switch boxes. The steps to accomplish any combination of these options are the same.

Before beginning, read through the entire procedure to understand the required timing of the steps.

To program the switch box:

1. Make sure the dust collector is **NOT** connected to the switch box.
2. Make sure the red receiving light on the switch box is illuminated (see **Figure 4**).

—If the red receiving light is not illuminated, the switch box is not receiving power. Resolve this issue before continuing.

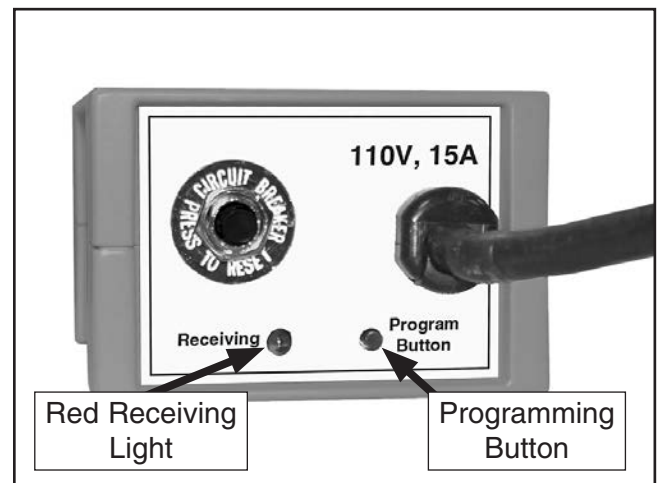


Figure 4. Programming controls on rear of switch box.

3. Press and release the black programming button once—you will hear three beeps and the red receiving light will flash three times. The switch is now in programming mode.

Note: If you do not perform the next step within approximately five seconds after the three beeps, you will hear one more beep and the switch box will leave programming mode. In this case, you will have to start **Step 3** again.



4. Press either button on the remote controller (see **Figure 5**)—you will hear three beeps and the red receiving light on the switch box will flash three times.

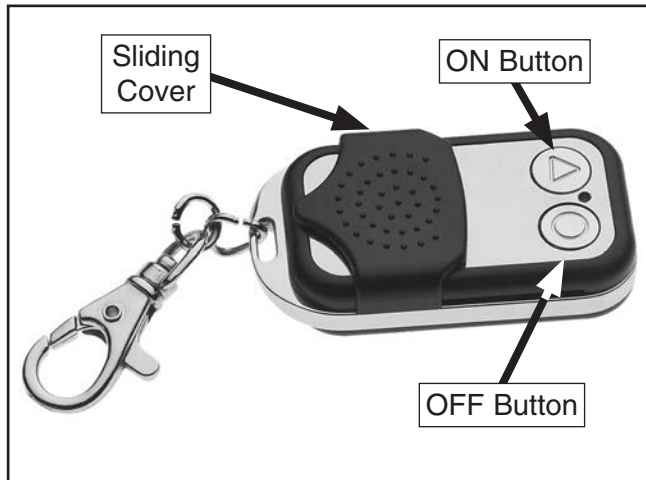


Figure 5. Remote controller buttons.

5. Wait approximately five seconds and you will hear another beep—the switch box is now programmed to work with this remote controller.

Un-programming Switch Box

If necessary, the switch box can be un-programmed so that it will not operate with any remote controller. In such case, you will have to re-program the switch box to operate with a remote controller.

To un-program the switch box:

1. Press and hold the black programming button on the switch box for approximately five seconds—you will hear one long beep and the red receiving light will flash once.
2. The switch box is now un-programmed.

Operation

1. Make sure the switch box is properly installed and correctly programmed with the remote controller.
2. Turn the dust collector ON/OFF switch to **ON**.
3. Press the remote controller ON button once to turn the dust collector **ON**. The green power light on the switch box will also illuminate (see **Figure 6**).

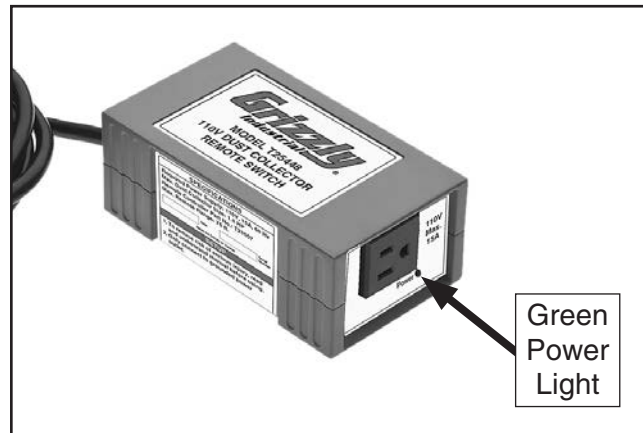


Figure 6. Green power light on switch box.

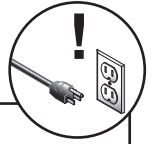
4. Press the remote controller OFF button once to turn the dust collector **OFF**. The green power light on the switch box will turn **OFF**.



Troubleshooting

Review the troubleshooting and procedures in this subsection if a problem develops. If you need additional help with a procedure, call our Technical Support at (570) 546-9663.

Note: Please gather the serial number and manufacture date of your switch before calling.



Symptom	Possible Cause	Possible Solution
Switch box will not turn ON .	<ol style="list-style-type: none"> 1. Switch box not connected to power. 2. Remote controller not properly programmed to operate switch. 3. Remote controller battery weak/dead. 4. Switch box circuit breaker has tripped. 5. Remote controller is out of range with switch. 6. Wall circuit breaker has tripped. 7. Remote controller/switch at fault. 	<ol style="list-style-type: none"> 1. Connect switch box to correct power source (Page 2). 2. Properly program remote controller to operate switch (Page 2). 3. Replace remote controller battery (this page). 4. Press the circuit breaker reset button on rear of switch. 5. Operate the remote controller within 75 ft. of the switch. 6. Reset wall circuit breaker. Make sure breaker is in good condition and circuit is properly sized for dust collector in use. 7. Test/replace.
Dust collector will not turn ON .	<ol style="list-style-type: none"> 1. Dust collector ON/OFF switch not turned ON. 2. Dust collector not connected to switch box. 3. Switch box not connected to power. 4. Wall circuit breaker has tripped. 5. Dust collector at fault. 	<ol style="list-style-type: none"> 1. Turn dust collector ON/OFF switch ON. 2. Properly connect dust collector to switch box (Page 2). 3. Connect switch box to correct power source (Page 2). 4. Reset wall circuit breaker. Make sure breaker is in good condition and circuit is properly sized for dust collector in use. 5. Refer to dust collector manual for troubleshooting; contact dust collector manufacturer for technical help.

Replacing Remote Controller Battery

The remote controller is independently powered by a Type 23AE, 12V internal battery. If the switch box stops responding to the remote controller, replace the battery as the first course of resolution.

To replace the remote controller battery:

1. Place the remote controller upside down on a stable, protective surface.
2. Use a #00 Phillips screwdriver to remove the three screws that secure the components together.
3. Carefully separate the covers, circuit board, and battery, as shown in **Figure 7**.



Figure 7. Remote controller components.

4. Replace the battery, then re-assemble the remote controller.



Free Manuals Download Website

<http://myh66.com>

<http://usermanuals.us>

<http://www.somanuals.com>

<http://www.4manuals.cc>

<http://www.manual-lib.com>

<http://www.404manual.com>

<http://www.luxmanual.com>

<http://aubethermostatmanual.com>

Golf course search by state

<http://golfingnear.com>

Email search by domain

<http://emailbydomain.com>

Auto manuals search

<http://auto.somanuals.com>

TV manuals search

<http://tv.somanuals.com>