



# MODEL H0581 3/4" HEAVY-DUTY AIR IMPACT WRENCH INSTRUCTION SHEET

<b>⚠ WARNING</b>	
	<b>EYE/EAR INJURY HAZARD!</b> Wear safety glasses and hearing protection during use of this tool!
	<b>INJURY HAZARD!</b> Always disconnect tool from air to prevent unexpected operation during service!
	<b>DO NOT EXCEED 150 PSI!</b> Personal injury could occur.
	<b>SHATTERING HAZARD!</b> Use sockets rated for impact wrench use only.



Figure 1. Model H0581.

The impact wrench **MUST** have 6-8 drops of air tool oil directly dropped into the air fitting before each use. For best results, use the automatic oiler setup shown in **Figure 2**.

## Introduction

- Operates at 90 PSI
- 12 CFM air consumption
- 1/4" air inlet
- 3800 RPM no load speed
- 900 ft/lbs maximum torque
- Weighs 12 lbs
- 95 db sound level

## Inventory

- A. 3/4" Industrial Impact Wrench ..... 1

## Operation

Install any 3/4" drive socket onto your impact wrench. Choose from clockwise (R) to tighten, or counterclockwise (L) to loosen by pushing the direction valve (**Ref # 47**) in or out. Adjust the torque with the direction valve knob. One (1) is the highest setting, six (6) is the lowest.

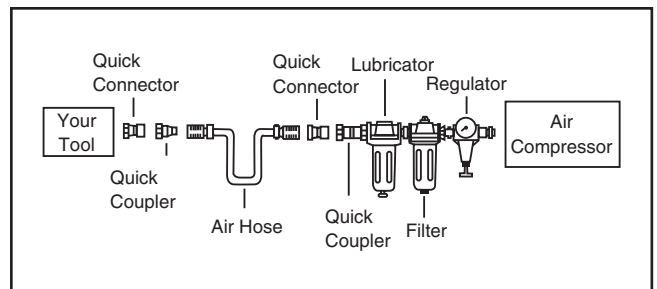


Figure 2. Installing your tool.

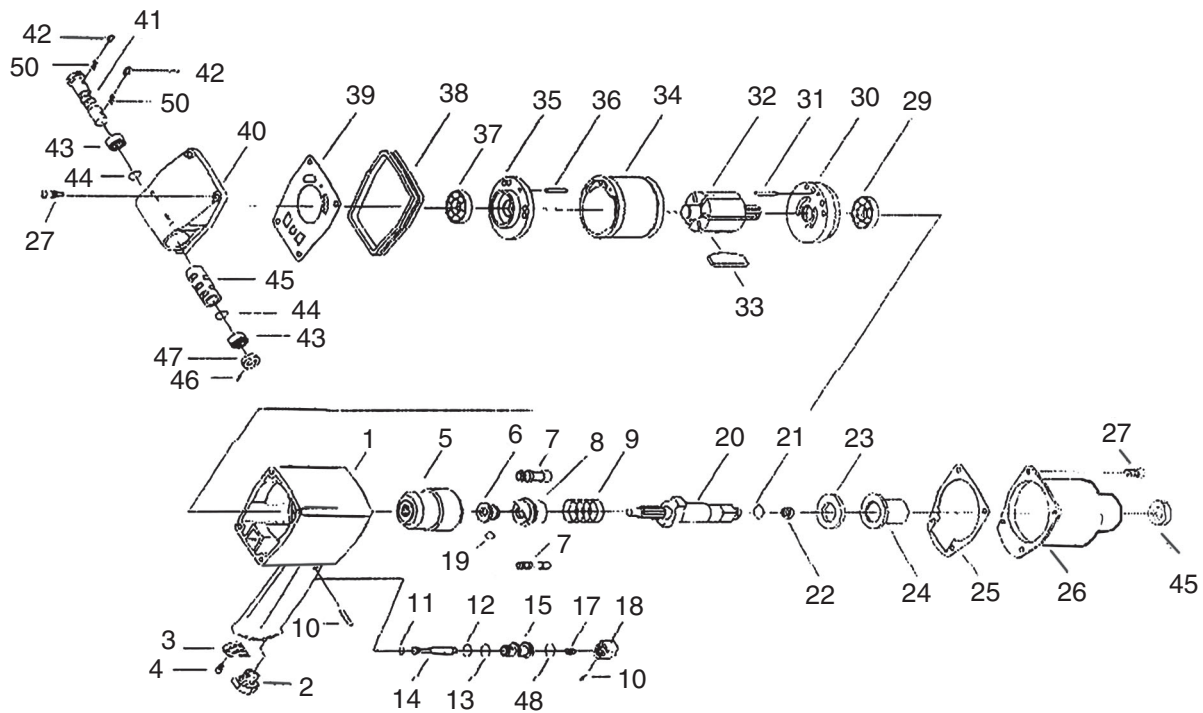
*If you need help with your new pneumatic tool, call our Tech Support at: (570) 546-9663.*

COPYRIGHT © JUNE, 2006 BY GRIZZLY INDUSTRIAL, INC.

**WARNING: NO PORTION OF THIS MANUAL MAY BE REPRODUCED IN ANY SHAPE OR FORM WITHOUT THE WRITTEN APPROVAL OF GRIZZLY INDUSTRIAL, INC.**

#PC8336 PRINTED IN TAIWAN

# H0581 Parts Breakdown and List



REF	PART #	DESCRIPTION
1	PH0581001	MOTOR HOUSING
2	PH0581002	AIR INLET
3	PH0581003	EXHAUST COVER
4	PH0581004	SCREW
5	PH0581005	HAMMER CAGE
6	PH0581006	DRIVE CAM BASE
7	PH0581007	HAMMER PIN
8	PH0581008	DRIVE CAM
9	PH0581009	SPRING
10	PH0581010	ROLL PIN
11	PH0581011	O-RING
12	PH0581012	O-RING
13	PH0581013	O-RING
14	PH0581014	VALVE STEM
15	PH0581015	VALVE BUSHING
16	PSS08M	SCREW
17	PH0581017	VALVE SPRING
18	PH0581018	TRIGGER
19	PH0581019	STEEL BALL
20	PH0581020	ANVIL
21	PH0581021	O-RING
22	PH0581022	ANVIL COLLAR
23	PH0581023	SPACER
24	PH0581024	HOUSING BUSHING
25	PH0581025	GASKET (B)

REF	PART #	DESCRIPTION
26	PH0581026	HAMMER COVER
27	PH0581027	SCREW & SPRING WASHER
29	PH0581029	BALL BEARING
30	PH0581030	FRONT END PLATE
31	PH0581031	ROLL PIN
32	PH0581032	ROTOR
33	PH0581033	ROTOR BLADE
34	PH0581034	CYLINDER
35	PH0581035	REAR END PLATE
36	PH0581036	ROLL PIN
37	PH0581037	BALL BEARING
38	PH0581038	HOUSING BAND
39	PH0581039	GASKET (A)
40	PH0581040	REAR COVER
41	PH0581041	REGULATOR
42	PH0581042	STEEL BALL
43	PH0581043	REGULATOR BUSHING
44	PH0581044	O-RING
45	PH0581045	VALVE BUSHING
46	PH0581046	ROLL PIN
47	PH0581047	REVERSE VALVE KNOB
48	PH0581048	O-RING
49	PH0581049	OIL SEAL
50	PH0581050	SPRING

## Free Manuals Download Website

<http://myh66.com>

<http://usermanuals.us>

<http://www.somanuals.com>

<http://www.4manuals.cc>

<http://www.manual-lib.com>

<http://www.404manual.com>

<http://www.luxmanual.com>

<http://aubethermostatmanual.com>

Golf course search by state

<http://golfingnear.com>

Email search by domain

<http://emailbydomain.com>

Auto manuals search

<http://auto.somanuals.com>

TV manuals search

<http://tv.somanuals.com>