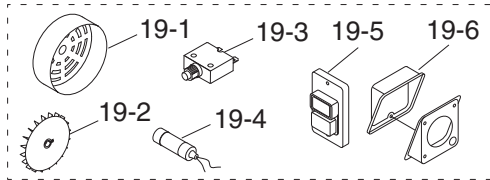
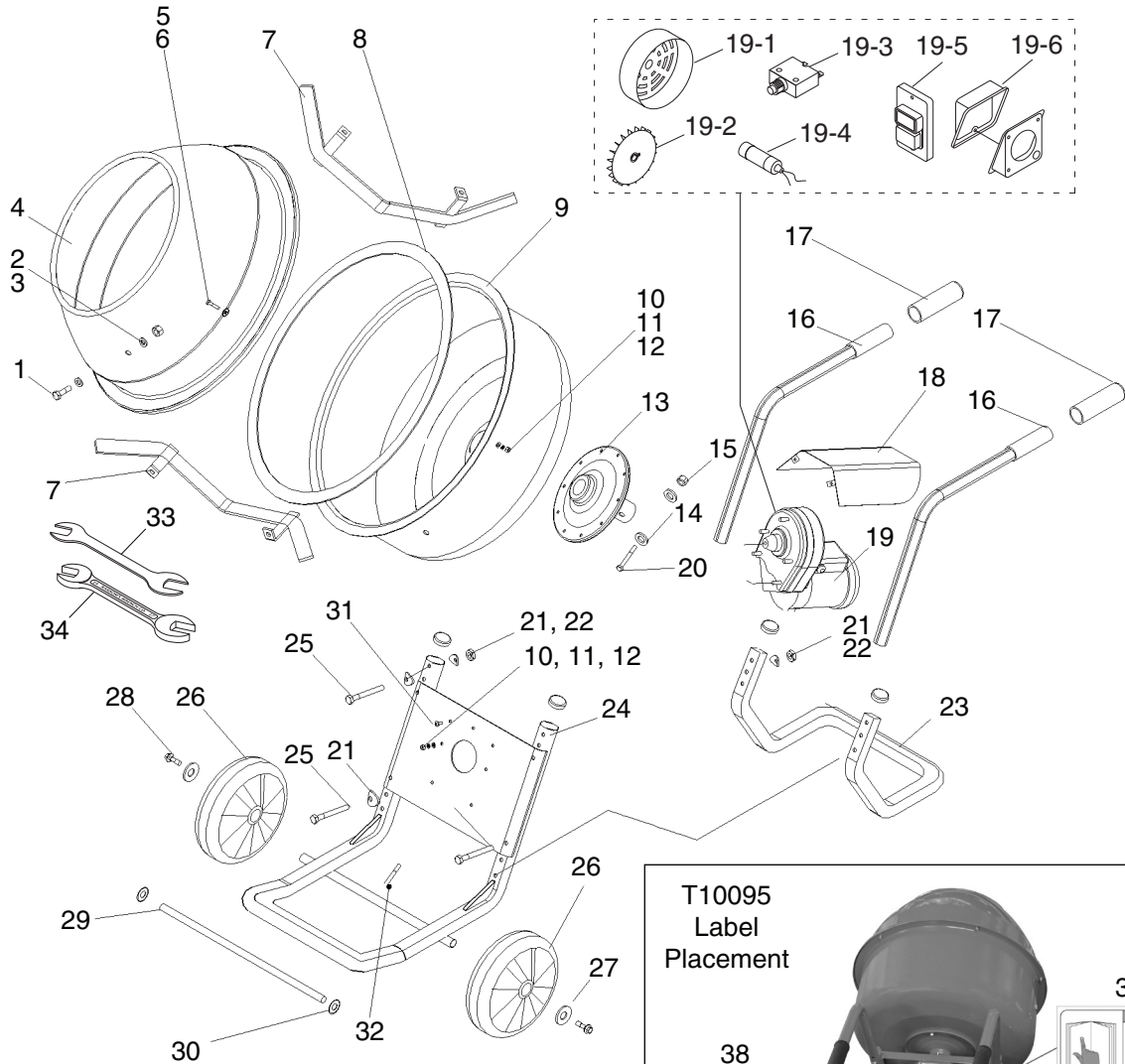


SECTION 7: PARTS

Parts Breakdown



T10095 Label Placement

35 Grizzly T10095 CEMENT MIXER

36 DISCONNECT POWER BEFORE ADJUSTMENTS, MAINTENANCE, OR SERVICE.

37 READ AND UNDERSTAND INSTRUCTIONS. FAILURE TO DO SO MAY CAUSE SERIOUS INJURY. If a manual is not available, DO NOT use machine. Go to www.grizzly.com or call (800) 823-4777.

38 EYE/EAR INJURY HAZARD! Always wear safety glasses and a respirator when using this machine.

39 SHOCK HAZARD! Keep water OFF switch and motor!

40 WARNING! TO REDUCE RISK OF SERIOUS PERSONAL INJURY WHEN USING THIS MACHINE: READ AND UNDERSTAND INSTRUCTIONS. FAILURE TO DO SO MAY CAUSE SERIOUS INJURY. If a manual is not available, DO NOT use machine. Go to www.grizzly.com or call (800) 823-4777.

40 SPECIFICATIONS

Motor: 1/2 HP, 300V SINGLE PHASE
 MOTOR SPEED: 1725 RPM
 DRIVE SHAFT: 1/2" CONCRETE FILL
 MAXIMUM CAPACITY: 28 CUBIC FEET
 DRIVE SHAFTS: 20
 CONCRETE OUTPUT HEIGHT: 17" (MAXIMUM)
 WEIGHT: 159 LBS.

WARNING!

TO REDUCE RISK OF SERIOUS PERSONAL INJURY WHEN USING THIS MACHINE:
 1. READ AND UNDERSTAND INSTRUCTIONS. FAILURE TO DO SO MAY CAUSE SERIOUS INJURY. If a manual is not available, DO NOT use machine. Go to www.grizzly.com or call (800) 823-4777.
 2. ALWAYS WEAR SAFETY GLASSES AND A RESPIRATOR WHEN OPERATING THIS MACHINE.
 3. ALWAYS WEAR SAFETY GLASSES AND A RESPIRATOR WHEN OPERATING THIS MACHINE.
 4. DO NOT REAR AND USE CUTTING, DRILLING OR JAWLAY, AND ALWAYS WEAR SAFETY GLASSES AND A RESPIRATOR WHEN OPERATING THIS MACHINE.
 5. DO NOT REAR AND USE CUTTING, DRILLING OR JAWLAY, AND ALWAYS WEAR SAFETY GLASSES AND A RESPIRATOR WHEN OPERATING THIS MACHINE.
 6. DO NOT REAR AND USE CUTTING, DRILLING OR JAWLAY, AND ALWAYS WEAR SAFETY GLASSES AND A RESPIRATOR WHEN OPERATING THIS MACHINE.
 7. DO NOT REAR AND USE CUTTING, DRILLING OR JAWLAY, AND ALWAYS WEAR SAFETY GLASSES AND A RESPIRATOR WHEN OPERATING THIS MACHINE.
 8. DO NOT REAR AND USE CUTTING, DRILLING OR JAWLAY, AND ALWAYS WEAR SAFETY GLASSES AND A RESPIRATOR WHEN OPERATING THIS MACHINE.
 9. DO NOT REAR AND USE CUTTING, DRILLING OR JAWLAY, AND ALWAYS WEAR SAFETY GLASSES AND A RESPIRATOR WHEN OPERATING THIS MACHINE.
 10. DO NOT REAR AND USE CUTTING, DRILLING OR JAWLAY, AND ALWAYS WEAR SAFETY GLASSES AND A RESPIRATOR WHEN OPERATING THIS MACHINE.



Parts List

REF	PART #	DESCRIPTION
1	PB32M	HEX BOLT M10-1.5 X 25
2	PN02M	HEX NUT M10-1.5
3	PW04M	FLAT WASHER 10MM
4	PT10095004	UPPER DRUM
5	PB08M	HEX BOLT M6-1 X 20
6	PWF06M	FENDER WASHER 6MM
7	PT10095007	MIXER BLADE
8	PT10095008	DRUM GASKET
9	PT10095009	LOWER DRUM
10	PW03M	FLAT WASHER 6MM
11	PLW03M	LOCK WASHER 6MM
12	PN01M	HEX NUT M6-1
13	PT10095013	UPPER COVER
14	PT10095014	SPECIAL WASHER 10MM
15	PLN05M	LOCK NUT M10-1.5
16	PT10095016	HANDLE
17	PT10095017	HANDLE GRIP
18	PT10095018	MOTOR COVER
19	PT10095019	MOTOR/GEARBOX ASSEMBLY
19-1	PT10095019-1	MOTOR FAN COVER
19-2	PT10095019-2	MOTOR FAN
19-3	PT10095019-3	CIRCUIT BREAKER
19-4	PT10095019-4	S CAP 150M 150V 1-1/2" X 2-3/4"

REF	PART #	DESCRIPTION
19-5	PT10095019-5	ON/OFF SWITCH
19-6	PT10095019-6	JUNCTION BOX
20	PT10095020	SPECIAL SCREW M10-1.5 X 65
21	PT10095021	CURVED WASHER 8MM
22	PLN04M	LOCK NUT M8-1.25
23	PT10095023	STAND SUPPORT
24	PT10095024	STAND
25	PB82M	HEX BOLT M8-1.25 X 80
26	PT10095026	WHEEL
27	PWF10M	FENDER WASHER 10MM
28	PB48M	HEX BOLT M10-1.25 X 20
29	PT10095029	AXLE
30	PT10095030	BUSHING
31	PS11M	PHLP HD SCR M6-1 X 16
32	PT10095032	PIN 5 X 40MM
33	PWR1012	WRENCH 10/12MM
34	PT10095034	WRENCH 14/17MM
35	PT10095035	MACHINE ID LABEL
36	PLABEL-53B	DISCONNECT POWER LABEL
37	PLABEL-12	READ MANUAL LABEL
38	PLABEL-57B	GLASSES RESPIRATOR LABEL
39	PT10095039	NO WATER LABEL
40	PLABEL-14	ELECTRICITY LABEL

WARNING

Safety labels warn about machine hazards and ways to prevent injury. The owner of this machine **MUST** maintain the original location and readability of the labels on the machine. If any label is removed or becomes unreadable, **REPLACE** that label before using the machine again. Contact Grizzly at (800) 523-4777 or www.grizzly.com to order new labels.



Free Manuals Download Website

<http://myh66.com>

<http://usermanuals.us>

<http://www.somanuals.com>

<http://www.4manuals.cc>

<http://www.manual-lib.com>

<http://www.404manual.com>

<http://www.luxmanual.com>

<http://aubethermostatmanual.com>

Golf course search by state

<http://golfingnear.com>

Email search by domain

<http://emailbydomain.com>

Auto manuals search

<http://auto.somanuals.com>

TV manuals search

<http://tv.somanuals.com>