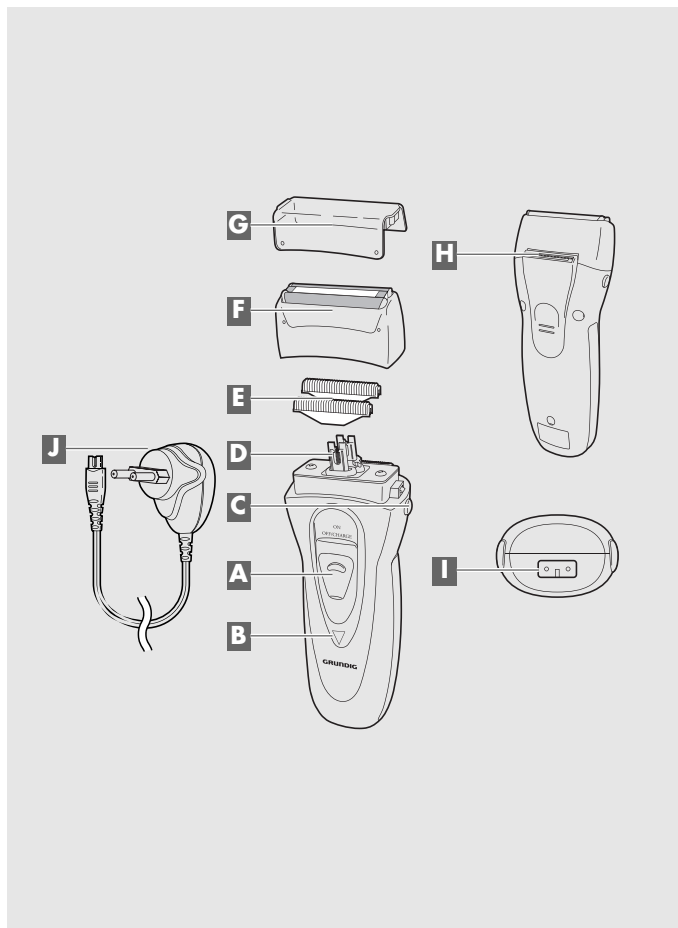


MAN SHAVER

GRUNDIG

MS 7540
MS 3540



DEUTSCH	6 - 15
ENGLISH	16 - 25
ITALIANO	26 - 35
PORTUGUÊS	36 - 45
ESPAÑOL	46 - 55
POLSKI	56 - 65

SAFETY

Please note the following information when using the appliance:

- The appliance is designed for domestic use only.
- This appliance is designed solely for trimming human facial hair. Any other use is expressly prohibited.
- Never use the appliance in the bath, shower or over a wash-basin filled with water.
- Never store the appliance with the mains adapter cable plugged in.
- Do not wind the mains adapter cable around the appliance.
- Do not use the appliance if the appliance, the foil or the blade units are visibly damaged.
- Do not expose the appliance to direct sunlight or temperatures above 60 °C.
- Do not use the appliance near aerosol products or released oxygen.
- Keep the appliance away from children.
- Never open the appliance under any circumstances. No warranty claims are accepted for damage resulting from improper handling.



- Do not immerse the appliance in water.
- For mains operation, first plug the cable of the mains adapter into the appliance, and then plug the mains adapter into the socket.
- After use, switch off the appliance, unplug the mains adapter and then pull out the cable of the mains adapter.

OVERVIEW

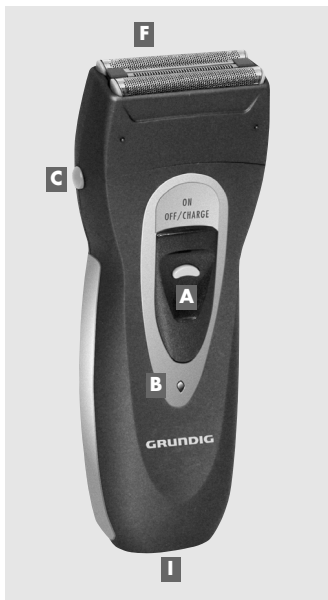
Fold out page 2 so that you have the illustrations in front of you.

Controls

- A** On/off switch with lock button.
- B** Charging LED. Flashes when the battery is low.
- C** Side lock buttons for removing the blade head.
- D** Oscillator.
- E** Blade units.
- F** Blade head with double foil and central trimmer. Trimmer on MS 7540 only.
- G** Plastic cap.
- H** Long hair trimmer (on back of device).
- I** Socket for the mains cable.

Accessories

- J** Mains adapter.



POWER SUPPLY

Operation with rechargeable batteries

When using the built-in rechargeable nickel metal hydride batteries, use the mains adapter supplied as a charger.

- 1 Switch off the appliance with the switch **A**.
- 2 Plug the mains adapter into the **I** socket, and plug the mains adapter into the mains socket.
 - During the charging process, the indicator **B** lights up green.
 - When the appliance is fully charged, the indicator **B** goes out.

Notes

- Completely charge up the batteries (approx. 7 hours) before you first use them or if you have not used them for a long time.
- The quick charging time is 1 hour when the appliance is switched off. If you switch on the appliance while it is charging, charging will stop.
- The ambient temperature should be between 5 °C and 40 °C.

- When fully charged (after approx. 7 hours) the appliance works for 70-80 minutes. When quick-charged, the appliance works for around 35 minutes. It is not advisable to charge the batteries after each use. Only charge the batteries when they are completely discharged. This increases their life. Do not charge them every day.
- The LED **B** flashes when the batteries need recharging.

Environmental note

- This appliance contains nickel metal hydride batteries. Do not dispose of it with your household waste at the end of its service life. Open the housing. Remove the batteries and take them to a battery collection box in a shop or public collection point.

POWER SUPPLY

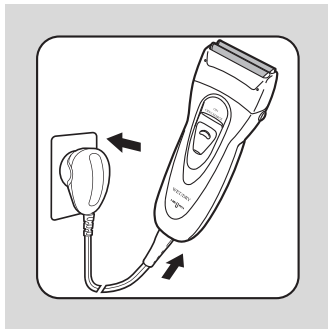
Mains operation (with mains adapter)

The appliance has an automatic 100 - 240 V, 50/60 Hz converter which works anywhere in the world. This means it can use any international DC or AC voltage, and any frequency. The only way to disconnect the device from the mains supply is to unplug the adapter.

- 1 Insert the mains adapter plug in the **1** socket.
- 2 Insert the mains adapter plug in the socket.
 - The built-in batteries are switched off.

Note

- Only use the appliance in battery mode when beside a water connection; never run it from the mains.



OPERATION

Shaving

- 1 Take off the plastic cap.

Note

- The foils and blade units may not be damaged. Replace any damaged parts before shaving.
- 2 Switch on the appliance by pressing the lock button and pushing the switch **A** to the »ON« position.
 - 3 Pull your skin tight with your free hand and move the appliance slowly and gently against the direction of growth. Hold the appliance at a 90° angle to your skin. Make sure both foils touch the skin.
 - 4 Do not press too hard as you may damage the foils.
 - 5 After use, switch off the appliance with the switch **A** and put the plastic cap back on.

Trimming

The trimmer cuts long hair on your face and neck, as well as your beard, moustache or sideburns.

- 1 Switch on the appliance by pressing the lock button and pushing the switch **A** to the »ON« position.
- 2 Push up the trimmer **H** (on the back of the appliance) until it latches in.
- 3 After use, push the trimmer back down.

Note

- To preserve the batteries, always return the trimmer to the off position when it is not in use.

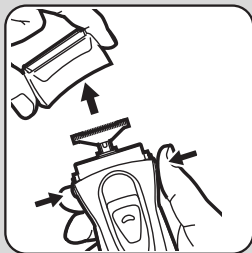
CLEANING AND CARE

General information

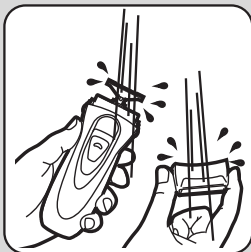
Regular cleaning is necessary for the appliance to maintain optimum performance and results. Clean the housing with a soft cloth and mild soap. Do not use any cleaning agents.

Cleaning with water

- 1 Switch off the appliance and unplug it if you are running it from the mains. Take off the blade head by pressing the side lock buttons.



- 2 Switch on the appliance (in battery mode) and run lukewarm water over the blade units and the detached blade head.



- 3 After cleaning, switch off the appliance and let it dry. Then put the blade head back on. Make sure it latches in on both sides.

Note

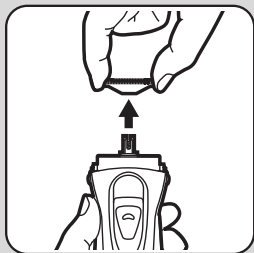
- The appliance is classed as "washable".

CLEANING AND CARE

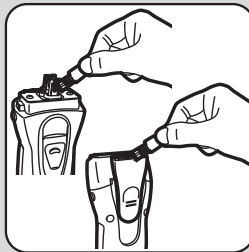
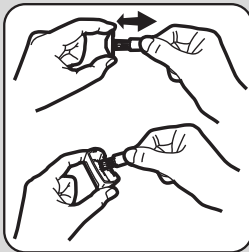
Cleaning with the brush

Clean using the brush after every three wet cleans.

- 1 Turn the appliance off and unplug the mains adapter cable. Take off the blade head.
- 2 Take off the blade heads for cleaning by pulling them up out of the holder.



- 3 Carefully brush hair clippings out of the blades, the inside of the blade head and the housing. Clean the trimmer in the off position.



CLEANING AND CARE

- 4 Clean the foils with soft tissue paper.

Note

- The foils can be irreparably damaged during cleaning. Only press very gently.
- 5 After cleaning, put the blade heads back on. Put on the blade head so that it catches on both sides.

Note

- To ensure smooth operation, the foil frames must sit exactly in the blade head. Never take the foils out of the frame.

Useful tips

- Always keep the appliance clean and dry.
- Thoroughly wash and dry your face before shaving.
- The foils and blade heads should be changed at least every 12 to 18 months. They fit best when changed at the same time (see page 14).

Storage

If you do not want to use the appliance for a long period of time, please store it carefully.

- 1 The appliance must be switched off and completely dry.
- 2 Keep the appliance in its bag in a cool, dry place.
- 3 Make sure the appliance is kept out of reach of children.

INFORMATION

Environmental note

This product has been made from high-quality parts and materials which can be re-used and recycled.

Therefore, do not throw the product away with normal household waste at the end of its life. Take it to a collection point for recycling electrical and electronic devices. This is indicated by this symbol on the product, in the operating manual and on the packaging.



Please find out about collection points operated by your local authority.

Help protect the environment by recycling used products.

INFORMATION

Technical data



This product fulfils the European directives 89/336/EEC and

73/23/EEC.

Power supply

Batteries: Ni-MH

Mains adapter

Guarantee

The guarantee does not cover parts subject to wear, such as the blade foil, blade block and trimmer, or defects which do not significantly affect the value or function of the appliance. The guarantee is invalidated if the appliance is damaged, opened or improperly used.



Ni-MH



Washable



Technical and design modifications reserved.

Grundig Multimedia B.V.

Atrium, Strawinskylaan 3105 • NL-1077 ZX Amsterdam • <http://www.grundig.com>
72011 900 3000

Free Manuals Download Website

<http://myh66.com>

<http://usermanuals.us>

<http://www.somanuals.com>

<http://www.4manuals.cc>

<http://www.manual-lib.com>

<http://www.404manual.com>

<http://www.luxmanual.com>

<http://aubethermostatmanual.com>

Golf course search by state

<http://golfingnear.com>

Email search by domain

<http://emailbydomain.com>

Auto manuals search

<http://auto.somanuals.com>

TV manuals search

<http://tv.somanuals.com>