

FOR A GOOD REASON

GRUNDIG

**PROFESSIONAL
HAIR STYLER**

HS 8980

en



SAFETY

Please note the following instructions when using the appliance.

- This appliance is intended for domestic use only.
- Never use the appliance in the bath, shower or over a wash basin filled with water; nor should it be operated with wet hands.



- Do not immerse the appliance in water or let it come into contact with water, even during cleaning.
- If the appliance is used in the bathroom, it is essential that the power plug is pulled out after use, as water close to the appliance can still pose a hazard, even if the appliance is switched off.
- If not already in use, for additional protection it is recommended to install a residual-current-operated protective device (RCD) with a rated residual operating current not exceeding 30 mA in the electrical circuit of your bathroom.
Ask your plumber for advice.
- Never place the appliance on soft cushions or blankets during operation.
- Ensure the air suction and outlet are not covered during operation.
- The appliance is equipped with an overheating protection system.
- Pull out the power plug after use. Do not disconnect the plug by pulling on the cable.
- Never use the appliance if it or the power cord is visibly damaged.
- If the power cord is damaged, it must be replaced by the manufacturer, its service centre or a similarly qualified person to prevent danger arising.
- Keep the appliance out of the reach of children.
- The appliance may not be used by the following people, including children: those with limited physical, sensory or mental capabilities and also those with a lack of experience and knowledge. This does not apply to the latter if they were instructed in the use of the appliance or if they use it under the supervision of a person responsible for safety. Children should always be supervised to ensure that they do not play with the appliance.
- Do not open the appliance under any circumstances. No warranty claims are accepted for damage caused by improper handling.
- A warm flow of air is required to achieve a perfect result.
Please note that a metallised brush can become extremely hot during prolonged or intensive use.
To avoid injury, please adjust the usage time of the device to the accessory being used.

HS 8980 HAIR STYLER

Dear customer,

Congratulations on the purchase of your HS 8980 professional hair styler.

Read the following user notes carefully to ensure you can enjoy your quality product from Grundig for many years to come.

The high-quality and professional styling appliances in the new product range fulfil the highest standards for salon results at home.

Special features

The styling attachments of your hair styler (heated brushes) are especially gentle on your hair due to their five-layered ceramic coating. The heat is evenly distributed to ensure the hair fibres are fully protected.

The five-layered ceramic coating is especially effective for damaged or coloured hair. The colour of dyed hair lasts far longer.

Your appliance features special ion technology to ensure lasting vitality for your hair.

The appliance produces negative ions which neutralise the positive ions in your hair. This prevents static electricity in your hair, making it easier to style. Individual water droplets are broken up into tiny particles.

This means your hair dries faster and more gently, giving it suppleness and a healthy sheen. The natural moisture in the hair is retained.

You can also use the appliance as a hairdryer with the concentrator nozzle.

Controls

- A** Styling attachment, medium \varnothing 38 mm.
- B** Catch for releasing the attachment.
- C** Switch for temperature settings (cold setting, two temperature settings).
- D** Button for switching the appliance on and off and selecting the two blower settings.
- E** Air inlet grille.
- F** Rotatable power cord with eyelet for hanging up the appliance.
- G** Handle.

Accessories

- 1** Styling attachment, small \varnothing 25 mm, with retractable brushes.
- 2** Styling attachment, medium \varnothing 38 mm.
- 3** Styling attachment, large \varnothing 50 mm.
- 4** Concentrator nozzle.
- 5** Storage case.

A responsible approach!



GRUNDIG focuses on contractually agreed social working conditions with fair wages for both internal employees and suppliers, as well as on the efficient use of raw materials with continual waste reduction of several tonnes of plastic each year – and availability of at least 5 years for all accessories.

For a future worth living.

For a good reason. Grundig.

OPERATION

Settings

Your appliance has the following setting options:

Blower level **D**

- **0** : Off
- **1** : Gentle air flow and moderate temperature for gently drying and styling
- **2** : Stronger airflow and high temperature for fast drying and styling

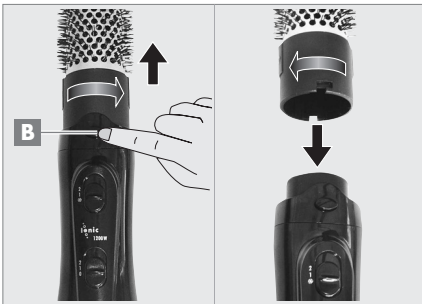
Cold setting and temperature setting **C**

- ***** : Interrupts the hot air supply with cold for setting the style of the hair
- **1** : Moderate temperature for gently drying and styling
- **2** : High temperature for fast drying

The separate temperature and blower settings allow you to control the temperature individually according to your hair type (fine, straight, curly or thick).

Changing the styling attachments

- 1 Remove the attached styling attachment by pressing catch **B** and twisting the attachment to the right slightly.

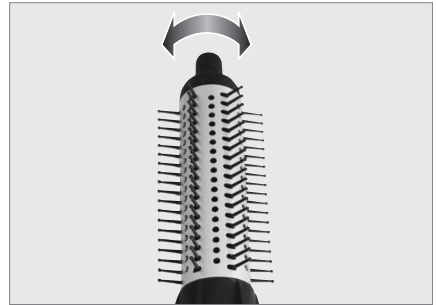


- 2 Place the required styling attachment over the catch in line with the recess, press catch **B** and let the styling attachment latch into place.

Notes:

The diameter of the styling attachment determines the size of the curls.

- The styling attachment with \varnothing 25 mm is suitable for smaller curls and waves. The retractable brushes make it easy to remove from your hair and ensure long-lasting styling results. To retract the brush, turn the knob at the top on the styling attachment.



- The 38 mm styling attachment is suitable for softly cascading hair styles or medium curls and waves.
- By using the 50 mm styling attachment, you can create an especially large volume for long hair, as well as large curls and waves.

OPERATION

Using as a hairstyler

Check if the mains voltage on the type plate (on the handle of the device) corresponds to your local mains supply.

- 1 Towel dry your hair thoroughly after washing.
- 2 Plug the power cord **F** into the wall socket.
 - The 3 metre salon length of the power cord ensures freedom of movement when styling.
- 3 Turn on the appliance with switch **D** and set the blower level.
- 4 Set the temperature level with switch **C**.
- 5 If required, you can interrupt the hot air supply when drying by turning switch **C** to »*« (cold setting).

Note

- The cold setting interrupts the hot setting with a flow of cool air. This allows you to fix your hairstyle better and more lastingly.
- 6 After use, switch off the appliance with the **D** button and pull out power cord **F** from the wall socket.

Caution

- Never wind the power cord around the appliance, as this can result in damage. Check the power cord and the appliance regularly for visible damage.


Using as a hairdryer

When using as a hair dryer, attach the small concentrator nozzle **4**.

Cleaning and care

Pull the plug out before cleaning.

Never submerge the appliance in water.

Use a soft dry cloth for cleaning the housing. Remember to clean the air inlet grille  occasionally with a soft brush to remove any hairs and dust.

Technical data



This product conforms to the European directives 2004/108/EC, 2006/95/EC and 2009/125/EC.

Power supply

220-240V~, 50 Hz

Power

1200 W

Environmental note

This product has been made from high-quality parts and materials which can be re-used and recycled.

Therefore, do not throw the product away with normal household waste at the end of its service life. Take it to a collection point for recycling electrical and electronic devices. This is indicated by this symbol on the product, in the operating manual and on the packaging.



Please find out about collection points operated by your local authority.

Help protect the environment by recycling used products.

Technical and design modifications are reserved.

Free Manuals Download Website

<http://myh66.com>

<http://usermanuals.us>

<http://www.somanuals.com>

<http://www.4manuals.cc>

<http://www.manual-lib.com>

<http://www.404manual.com>

<http://www.luxmanual.com>

<http://aubethermostatmanual.com>

Golf course search by state

<http://golfingnear.com>

Email search by domain

<http://emailbydomain.com>

Auto manuals search

<http://auto.somanuals.com>

TV manuals search

<http://tv.somanuals.com>