

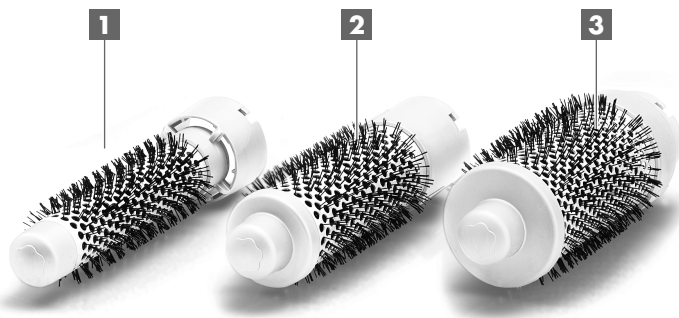
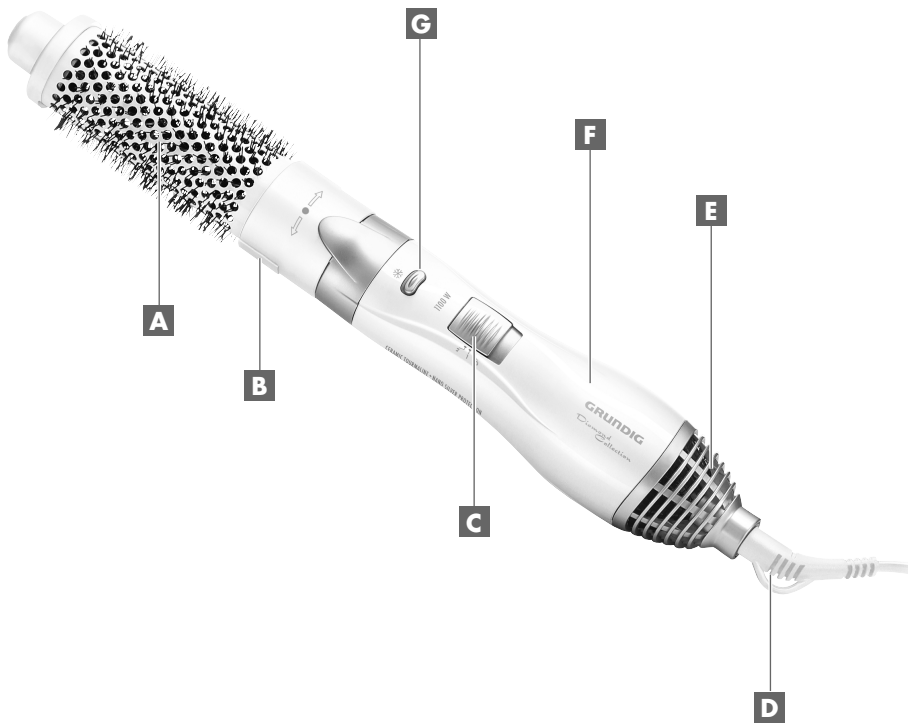
FOR A GOOD REASON

GRUNDIG

**CURLS & VOLUME
HAIRSTYLER**

HS 5524

en



SAFETY

Please note the following information when using the appliance:

- The appliance is designed for domestic use only.
- Never use the appliance in the bath, shower or over a washbasin filled with water; nor should it be operated with wet hands.



- Do not immerse the appliance in water or let it come into contact with water, even during cleaning.
- Do not use the appliance near water in bathtubs, wash basins or other vessels.
- If the appliance is used in the bathroom, it is essential that the mains plug is pulled out after use, as water close to the appliance can still constitute a danger, even if the appliance is switched off.
- If not already present, for additional protection it is recommended to install a residual-current-operated protective device (RCD) with a rated residual operating current not exceeding 30 mA in the electrical circuit of your bathroom. Ask your plumber for advice.
- Never place the appliance on soft cushions or blankets during operation.
- Ensure that the air-induction and output openings are not covered during operation.
- The appliance is equipped with an overheating protection system.
- Pull out the mains plug after use. Do not pull out the plug by pulling on the cable.
- Never use the appliance if it or the mains cable is visibly damaged.
- If the power cord is damaged, it must be replaced by the manufacturer, its service centre or a similarly qualified person to prevent danger arising.
- Keep the appliance away from children.
- The device may not be used by the following people, including children: those with limited physical, sensory or mental capabilities and also those with a lack of experience and knowledge. This does not apply to the latter if they were instructed in the use of the device or if they use it under the supervision of a person responsible for safety. Children should always be supervised to ensure that they do not play with the device.
- Do not open the appliance under any circumstances. No warranty claims are accepted for damage caused by incorrect handling.
- A warm flow of air is required to achieve a perfect result. Please note that a metallised brush can become extremely hot during prolonged or intensive use. To avoid injury, please adjust the usage time of the device to the accessory being used.

AT A GLANCE

Dear customer,

Congratulations on the purchase of your HS 5524 Curls- & Volume Hairstyler.

Please, read the following user notes carefully to ensure that you are able to enjoy your quality product from Grundig for many years to come.

Special features

- **Diamond Blond Shine Activator:**
The exclusive coating of the heating unit ensures natural shine, sensational volume, shimmering light reflection and lively radiance especially for blond, lightened and fine hair.
- **Protects and cares with its gentle ceramic coating with tourmaline and nanosilver for healthy, hydrated hair with more shine and bounce:**
 - Ceramic: ensures constant high temperatures and even heat distribution.
 - Tourmaline: generates negative ions which care for your hair naturally – preventing frizzy, statically charged hair and preserving the hair's natural moisture.
 - Nanosilver: prevents the growth of bacteria, protecting and retaining the smooth surface of the heated brushes – for healthy hair and a hygienic curling rod.
- The diameter of the styling attachment influences the size of the curls.
- The 25 mm styling attachment is suitable for smaller curls and waves.
- The 38 mm styling attachment is suitable for softly cascading hair styles such as medium curls and waves.
- With the 50 mm styling attachment, you can create especially large volume for long hair, as well as large curls and waves.

Controls

- A** Detachable heated brushes with ceramic-tourmaline-nanosilver coating (styling attachment).
- B** Catch for detaching the styling attachment (on back of device).
- C** Switches the device on and off. Controller for two temperature and blower settings.
- D** Mains cable with eyelet for hanging up the appliance.
- E** Air inlet grille.
- F** Handle.
- G** Button for cold setting (Cool Shot).

Accessories

- 1** Hot air brush medium ø 25 mm
- 2** Hot air brush large ø 38 mm
- 3** Hot air brush extra large ø 50 mm

A responsible approach!



GRUNDIG focuses on contractually agreed social working conditions with fair wages for both internal employees and suppliers, as well as on the efficient use of raw materials with continual waste reduction of several tonnes of plastic each year – and availability of at least 5 years for all accessories.

For a future worth living.
For a good reason. Grundig.

OPERATION

Settings

Your appliance has the following settings:

Temperature level/blower level **C**

- **0**: Off
- **1**: Gentle air flow and moderate temperature for gently drying and styling
- **2**: Strong air current, high temperature for quick drying

Cool shot **F**

- *****: Interrupts heating and provides a cool air flow

Changing the styling attachments

- 1** Detach the attached styling attachment **A** by pressing on the catch (on the back of the appliance) **B** and turning the hot air brush slightly to the right.
- 2** Place another styling attachment on so that the recess and the catch **B** (on the back of the appliance) are in line and turn slightly to the left until it clicks.

Operation

Check if the mains voltage on the type plate (on the handle of the device) corresponds to your local mains supply.

- 1** Thoroughly towel dry your hair after washing.
- 2** Plug the **D** power cord into the wall socket.
- 3** Turn on the appliance with the switch **C** and set the required temperature level/blower level.
- 4** If necessary, interrupt heating by pressing and holding down the **G** button (Cool Shot).

Note

- Cool Shot interrupts heating and provides a cool air flow. This allows you to fix your hairstyle better and more lastingly.
- 5** After use, switch off the appliance with the **C** switch and pull the plug of the mains cable **D** out of the socket.

Note

- Never wind the mains cable around the appliance, because this can cause damage. Please check the appliance and the cable regularly for visible damage.

Cleaning and care

Pull the plug out before cleaning.

Never submerge the appliance in water.

Use a soft, dry cloth to clean the housing. Remember to clean the air inlet grille **G** occasionally with a soft brush to remove hairs and dust.

INFORMATION

Environmental note

This product has been made from high-quality parts and materials which can be re-used and recycled.

Therefore, do not throw the product away with normal household waste at the end of its life. Take it to a collection point for recycling electrical and electronic devices. This is indicated by this symbol on the product, in the operating manual and on the packaging.



Please find out about collection points operated by your local authority.

Help protect the environment by recycling used products.

Technical data



This product fulfils the European directives 2004/108/EG, 2006/95/EG and 2009/125/EG.

Power supply

230 - 240 V~, 50 Hz

Power

1000 - 1100 W

Technical and design modifications reserved.

Free Manuals Download Website

<http://myh66.com>

<http://usermanuals.us>

<http://www.somanuals.com>

<http://www.4manuals.cc>

<http://www.manual-lib.com>

<http://www.404manual.com>

<http://www.luxmanual.com>

<http://aubethermostatmanual.com>

Golf course search by state

<http://golfingnear.com>

Email search by domain

<http://emailbydomain.com>

Auto manuals search

<http://auto.somanuals.com>

TV manuals search

<http://tv.somanuals.com>