

# HAAN

## STEAM CLEANER

### USER MANUAL

HS-10



**HAAN** CORPORATION

# IMPORTANT SAFETY

When using your Steam cleaner, basic safety precautions should always be observed, including the following:

**WARNING** - To reduce the risk of fire, electric shock, or injury

1. Read all instructions before using your steam cleaner
2. Do not leave the product with the power turned on.
3. When not in use, make sure to unplug the product power cord.
4. Store the product in a place that is out of the reach of small children.
5. Make sure to use the product according to this user manual, and use only authentic product parts and accessories.
6. Do not use in close proximity to flammable materials.
7. When unplugging the power cord, do so by grasping the plug, and do not pull on the power cord itself.
8. Do not handle the power cord with wet hands, and make sure to grasp the plug with fully dry hands.
9. Store the product in a cool place.
10. Do not spray steam in the direction of another person.
11. Make sure to unplug the power cord prior to filling the product with water.
12. Do not use the product with water that has been combined with detergent, rinse, and/or any other sort of chemicals. Make sure to use only water.
13. To refill the product with water during use:
  - ① Unplug the power cord.
  - ② Press the steam button to fully discharge all air held inside.
  - ③ Wait three minutes for the steam held within to settle and dispel.
  - ④ Press the steam button once again to fully discharge all steam remaining inside.
  - ⑤ Turn and open the safety cap.
14. The product becomes hot during use. Exercise care when substituting accessories.
15. To provide continued protection against risk of electric shock, connect to properly grounded outlet only."
16. Not for Space Heating Purposes"

**SAVE THESE INSTRUCTIONS**  
FOR HOUSEHOLD USE ONLY

# ADDITIONAL IMPORTANT

1. To avoid circuit overload, do not operate another appliance on the same socket (circuit) as the steam cleaner.
2. If an extension cord is absolutely necessary, an extension cord rated a minimum of 15 ampere, 14 gauge cord should be used, Cords rated for less amperage may overheat, Care should be taken to arrange cord so that it cannot be pulled or tripped over.
3. Do not leave unattended when the system is connected to a power supply/electrical outlet.

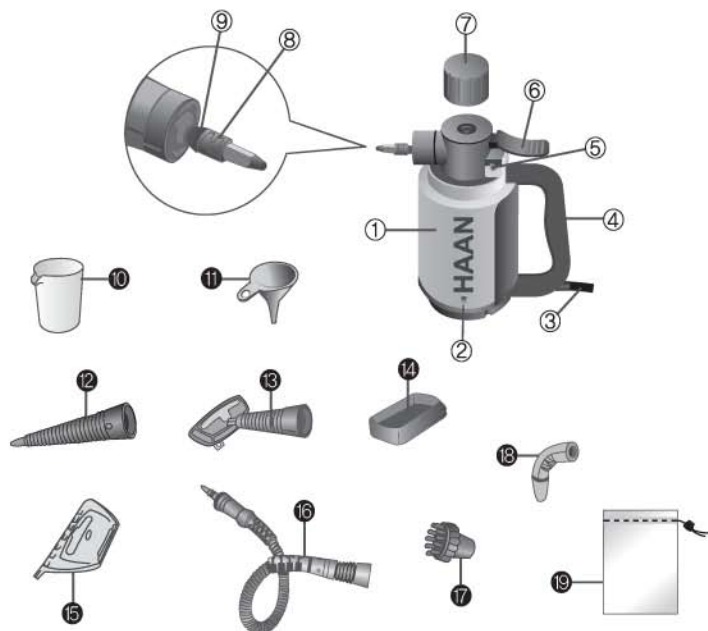
**WARNING:** This appliance is equipped with a grounded, type 3-wire cord (3-prong plug). This plug will only fit into an electrical outlet made for a 3-prong plug, This is a safety feature, If the plug should fail to fit the outlet, contact an electrician to replace the outlet . Do not attempt to defeat the safety purpose of the grounding pin, part of the 3-prong plug.

**WARNING:** Your steam cleaner is designed to clean hard surfaces and upholstery that will withstand high heat. Do not use on soft plastics and cold glass. On surfaces that have been treated with wax or some no wax floors, the sheen may be removed by the heat and steam action. Do not use on unsealed wood. This could cause the wood grain to rise. It is therefore recommended to test an isolated area of the surface to be cleaned before proceeding.

## SAVE THESE INSTRUCTIONS

FOR HOUSEHOLD USE ONLY

# GETTING TO KNOW YOUR STEAM CLEANER



## ■ Part Names ■

- ① Main Unit
- ② Status Lamp
- ③ Power Cord
- ④ Handle
- ⑤ Continuous Spray Button
- ⑥ Steam Spray Button
- ⑦ Safety Cap
- ⑧ Connection Nozzle
- ⑨ Rubber Gasket

## ■ Accessories ■

- ⑩ Measuring Cup
- ⑪ Funnel
- ⑫ Straight Nozzle
- ⑬ Fiber Brush
- ⑭ Fiber Brush Cloth
- ⑮ Rubber Panel for Window Cleaning
- ⑯ Extension Hose
- ⑰ Round Brush
- ⑱ Angle Nozzle
- ⑲ Accessory Storage Bag

## ■ Technical Specifications ■

- Voltage: 120v ., 60Hz
- Power: 900 Watts
- Water Capacity: 7 US fl. oz. (200ml)

# OPERATING INSTRUCTIONS

When using this product, first perform steps 1~7 with the power cord unplugged. (If using for the first time, fill with and discard water once. An odor may be emitted when first used.)

- ※ **CAUTION:** After each use, unplug the power cord and press the steam button to fully discharge all remaining air. Make sure that no steam remains before opening the safety cap.

## Step 1

Press down on the safety cap and turn in counter clockwise. (After each use, completely empty any remaining water from the internal container. Water can be emptied by turning the product upside down.)



## Step 2

Fill the measuring cup with water. (optimum capacity: 200ml) Use the funnel to fill the internal container with water. Use only one measuring cup of water per single use. Take care so as not to overflow the container.



## Step 3

Turn the safety cap clockwise to close. (During product operation, the safety cap does not open. It can be opened only when the internal pressure of the product and/or the temperature is low.)



## Step 4 Accessory Connection 1

Follow the following instructions to connect and use the straight nozzle, extension hose, and/or fiber brush.



(Straight Nozzle) (Extension Hose) (Fiber Brush)

- ※ **CAUTION :** Never use with detergents and/or soap water.



When connecting an accessory, align the indicator line (-) on the connection section of the accessory with the indicator line (-) on the main unit. Push the accessory into the main unit and turn in a counter clockwise direction until aligning the indicator line (=). (Make sure to affix accessories precisely prior to use!)

# OPERATING INSTRUCTIONS



**Steam Spray Angle Adjustment of the Connection Nozzle :** Align the indicator lines of the main unit and straight nozzle (-), insert the straight nozzle until the end of its connection section reaches the rubber gasket, and turn counter clockwise to align with the main unit indicator line (=). Then, the steam spray can be adjusted to any desired angle.

## Step 5 Accessory Connection 2



(Round Brush)



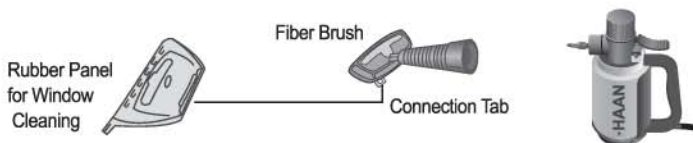
(Angle Nozzle)



To attach the round brush and angle brush and angle nozzle, attachment can be done directly to the connection nozzle or via the connected straight nozzle or extension hose. Please use each accessory properly with regard to the item and/or location to be cleaned.

## Step 6 Fiber Brush & Rubber Panel for Window Cleaning Connection

To clean windows and/or tiles, first attach the fiber brush to the main unit or the connected extension hose. Then, align the connection slots at the bottom of the fiber brush with those at the bottom of the rubber panel for window cleaning, and join them together. Attachment is complete when the hook at the top makes a clicking sound. When cleaning sofas and/or mattresses, use only the fiber brush. In such cases, encase the fiber brush with the fiber brush cloth provided.



- ※ **CAUTION:** Do not use on windows if they are cold. Doing so may result in the glass cracking due to the hot steam.
- ※ **CAUTION:** After plugging in the power cord and beginning heating, a fixed amount of water is released due to the buildup of internal pressure. After heating is complete, spray the steam 2~3 times before affixing the fiber brush cloth.

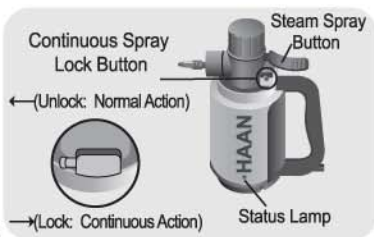


# OPERATING INSTRUCTIONS

## Step 7 Steam Cleaner Operation

When the power cord is plugged in, the power status lamp becomes lit. After waiting 2-3 minutes, press the steam spray button until steam is emitted and then begin cleaning.

- ※ **Status Lamp:** Indicates the status of the handy steam cleaner operation and power. (lamp turns on and off repeatedly)
- ※ **Continuous Spray Button:** Allows the continuous spray of steam without the need to press the steam spray button, however, pressure becomes low after a fixed amount of time



## ■ Refilling With Water During Use

During use, if steam is not emitted, this signifies that there is no more water in the internal container.

In such cases, to refill with water, first unplug the power cord, and press the steam spray button to fully release all steam remaining inside.

Wait at least three minutes before opening the safety cap. When opening the safety cap, do so slowly in order to stay safe from any steam that may still remain inside.

After opening the safety cap, wait a moment and then use the funnel to add water. Then close the safety cap.

- ※ **CAUTION:** Pressure for the spraying of steam always exists within the product. Make sure to press the steam spray button to eliminate this pressure prior to opening the safety cap. (This is a constant precaution.)

# Product Maintenance & Storage

## ■ Maintenance

- ▶ After cleaning, leave the product until the main unit has fully cooled.
- ▶ Store the product in a cool location.
- ▶ When cleaning the product, do not introduce detergents and/or soap water to the interior. Use only standard tap water.

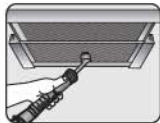
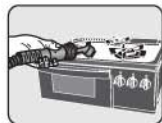
## ■ Storage When Not Using

- ▶ Store the product after fully emptying all water from the internal container. (Leaving with water for long periods of time can result in the decay of the water causing an unpleasant odor and/or black discoloration.)

# TIP ON HOW TO USE YOUR

## Round Brush

- ▶ For use with gas ranges, hoods, sinks, tiles, etc.
- ▶ Cleans hardened and oily grime
- ▶ Sterilizes kitchenware such as towels, cutting boards, etc.



## Straight Nozzle

- ▶ For use in various openings, window frames, shelves, tiles, blinds, etc.
- ▶ Removes house dust mites and disinfects



## Fiber Brush (Cloth)

- ▶ For use with sofas, carpets, bedding, pillows, curtains, othing, etc.
- ▶ Removes house dust mites and disinfects



## Angle Nozzle

- ▶ For use in hard-to-reach corners and places, openings, window frames, toilets, etc.
- ▶ Removes various bacteria



## Rubber Panel for Window Cleaning

- ▶ For use with mirrors, windows, bathroom and kitchen tiles, etc.
- ▶ Do not use on cold windows.



## Extension Hose

- ▶ For use when using only the main unit is difficult, connects with all other accessories



## Other Uses

- ▶ This product can be used on children's toys as well as various other areas and items in which house dust mites and/or bacteria exist.



# TROUBLESHOOTING

| <b>Problem</b>                                | <b>Possible Cause(s)</b>   | <b>Troubleshooting</b>  |
|---|--|---|
| - The product does not operate.               | - The product is not plugged in.<br>- The internal container has no water.   | - Make sure the plug is securely inserted in a power outlet.<br>- Try inserting the plug in another power outlet.<br>- Confirm that there are no circuit breaker issues.<br>- Check to see if there is any water in the internal container. |
| - The steam cannot be sprayed.                | - The internal container has no water.   | - Check to see if there is any water in the internal container.   |
| - Water leaks from the nozzle.                | - There is too much water in the internal container.<br>- The product is not upright.<br>- Heating has not been done properly. | - Check the amount of water in the internal container.<br>- Stand the product upright.<br>- Wait until heating is complete.   |
| - Steam is ejected when refilling with water. | - The internal container is too hot.   | - Wait until the product is fully cooled.<br>- Pour water in slowly.<br>- Use the funnel.   |
| - An accessory is not properly attached.      | - Connection is not precise.   | - Attach the accessory properly.<br>- Review the user manual.   |
| - General Issues                              | - Assembly & Accessory Problems  | - Contact our service center.   |

# One Year Limited Warranty

Your **HAAN Steam Cleaner** is warranted to be free from defects in material and workmanship for a period of one (1) year from the date of purchase when utilized for normal household use by the original purchaser only. The included Warranty Registration Card must be filled out and returned within 10 days of purchase. This is essential for your warranty to be effective should any problem arise with this product.

Should any defect covered by the terms of the limited warranty be discovered within one year, **HAAN Corporation** will repair or replace by defective part provided the unit is returned by the original purchaser, freight prepaid, to: **44 North Queen Street, Lancaster, PA 17603**

Proof of purchase date and \$12.95 for handling and return packing/shipping charges must be included.

The liability under this warranty is limited solely to the cost of the replacement parts or the complete unit at our option. **LABOUR CHARGES ARE NOT INCLUDED.**

This warranty is extended to the original purchaser of the unit and excludes all other legal and/or conventional warranties. The responsibility of **HAAN Corporation**, if any, is limited to the specific obligations expressly assumed by it under the term of the limited warranty. In no event is **HAAN Corporation** liable for incidental or consequential damages of any nature whatsoever. Some States/Provinces do not permit the exclusion or limitation of incidental or consequential damages, so the above may not apply to you. This warranty gives you specific legal rights which vary from state to state or province to province.

**Important:** carefully pack item to avoid damage in shipping. Be sure to attach tag to item before packing with your name, complete address, and phone number with note giving purchase information, model number and what you believe is the problem with item.

We recommend you insure the package (as damage in shipping is not covered by our warranty). Mark the outside of your package "ATTENTION CUSTOMER SERVICE". We are constantly striving to improve our products therefore the specifications contained herein are subject to change without notice.

---

## OWNERSHIP REGISTRATION CARD

Please fill out and mail the product registration card within ten (10) days of purchase in order to validate the foregoing Limited Warranty. The registration will enable us to contact you in the unlikely event of a product safety notification. By returning this card you acknowledge to have read and understood the instructions for use, and warnings set forth in the accompanying instructions.

Model : HS-E150

Date purchased

Name of store

Owner's name

Address

City

State

## Free Manuals Download Website

<http://myh66.com>

<http://usermanuals.us>

<http://www.somanuals.com>

<http://www.4manuals.cc>

<http://www.manual-lib.com>

<http://www.404manual.com>

<http://www.luxmanual.com>

<http://aubethermostatmanual.com>

Golf course search by state

<http://golfingnear.com>

Email search by domain

<http://emailbydomain.com>

Auto manuals search

<http://auto.somanuals.com>

TV manuals search

<http://tv.somanuals.com>