

# HAAN®

*engineering clean.™*

## QuickPro™

*Portable Steamer  
& Sanitizer*



**TS-30**

*Freshen clothes and fabrics  
at home or on the go!*



**User Manual**

## Notice

The information contained in this document is subject to change without notice.

**HAAN®** Corporation assumes no responsibility for any errors that may appear in this document nor does it make expressed or implied warranty of any kind with regard to this material, including, but not limited to, the implied warranties of merchantability and fitness for a particular purpose.

**HAAN®** Corporation shall not be liable for incidental or consequential damages in connection with or arising out of the furnishing, performance, or use of this document and the program materials that it describes.

Edition 1, April 2010

Printed in Korea/China

Product manufactured in Korea/China

All rights reserved. No part of this document may be photocopied, reproduced or translated to another language without prior written consent of **HAAN®** Corporation.

**HAAN®** is a registered trademark of the **HAAN®** Corporation.

QuickPro™ and engineering clean™ are trademarks of **HAAN®** Corporation.



## *Instant steam. Expert results.*

Congratulations on purchasing the **HAAN®** TS-30 QuickPro™ Portable Steamer & Sanitizer. Lightweight and compact, the QuickPro™ delivers instant steam to quickly smooth away wrinkles with dry cleaner results before you head out the door.

The sleek, slim QuickPro™ fits into a suitcase to keep up with the fast-paced traveler, too. And with 212°F steam that kills up to 99.9% of E.coli, Salmonella and other household germs, the QuickPro™ is also great for sanitizing or deodorizing pillows and bedding – at home or in hotels.

Delivering approximately 5 minutes of steaming time, the QuickPro™ features a special “continuous steam” button that ensures a steady flow of steam to precisely and quickly steam away wrinkles. Multi-directional design lets you steam vertically or horizontally. And a snap-on the lint remover and nap brush attachment let you touch-up jackets and blouses and tidy Portable-wearly clothes.



Look for the **HAAN®** “steamlet” symbol in this manual for helpful **HAAN®** Hints and information that will help you make the most of your new QuickPro™ Portable Steamer & Sanitizer.

Backed with a one-year limited warranty, your quality **HAAN®** product is sure to give you years of dependability. And our friendly Customer Care representatives are readily available to answer any of your questions about your new **HAAN®** QuickPro™.

Thank you for your purchase.

*The HAAN® Team*



# Important Safety Information

## IMPORTANT



Be sure to read **ALL** instructions and warnings **before** using your Portable Steamer & Sanitizer.



## WARNING

Risk of electrical shock - be sure to read and follow all instructions and warnings. This appliance was factory set to operate at 120 watts.



## CAUTION

The **HAAN® QuickPro™** emits steam at 212°F to sanitize the area of use. This means that the steam plate gets very hot during use. Burns could occur from touching the hot metal pate, hot water or steam. Care should be taken when using this appliance or when emptying the reservoir as the water may be hot. **DO NOT** touch the plate during use and do not use the product except in the approved manner as outlined in this manual.

## INTENDED FOR HOUSEHOLD USE ONLY

**Basic precautions should be observed when using an electrical appliance, including the following:**

1. Do not direct steam at people, animals or at electrical outlets. Do not use the Portable Steamer & Sanitizer on garments while they are being worn.
2. Do not expose to rain or use outdoors. Store indoors.
3. Never leave your Portable Steamer & Sanitizer in one spot on any surface for any period of time. During use, or while heating or cooling down, **DO NOT** rest the unit on the steam plate. You can turn the appliance over on its side on a firm, flat, heat-resistant surface, but it is the manufacturer's recommendation to place it on the provided Metal Resting Tray whenever not holding the unit.
4. Always disconnect the appliance from the electrical outlet when filling or emptying the reservoir with water. Unplug it from outlet when not in use and before conducting maintenance or troubleshooting.
5. Do not leave Portable Steamer & Sanitizer unattended while plugged or while it is still hot.
6. Do not leave the Portable Steamer & Sanitizer connected to an electrical outlet when not in use.
7. Do not service Portable Steamer & Sanitizer when it is plugged in.
8. Do not use with damaged cord or plug.
9. Do not use Portable Steamer & Sanitizer if it has been dropped, damaged, left outdoors or dropped into water. Call Customer Care for instructions.
10. Do not handle Portable Steamer & Sanitizer with wet hands.
11. Do not pull or carry by cord, use cord as a handle, close door on cord, bend the cord excessively, pull cord around sharp corners, place heavy objects on it or expose cord to heated surfaces. If the power cord has become knotted and/or worn, contact the service center for a replacement power cord.
12. Do not unplug by pulling on cord. Unplug by grasping the plug, not the cord.



## CAUTION

The use of accessory attachments other than those provided by **HAAN®** is not recommended and may result in fire, electrical shock or personal injury.

## IMPORTANT

To reduce the risk of electric shock, the **HAAN® QuickPro™** has a polarized 2-blade attachment plug (one blade is wider than the other). This plug will fit in a polarized outlet only one (1) way. If the plug does not fit in the outlet, reverse the plug. If it still does not fit, **DO NOT** force the plug. Contact a qualified electrician to install the proper outlet. **DO NOT modify the plug in any way. Improper connection can result in electrical shock.**



### SAVE THESE INSTRUCTIONS -

For household use only. Any other use of this appliance will void the manufacturer's warranty.

13. Do not immerse in water or any other liquids.
14. Do not use appliance in an enclosed space filled with vapor given off by oil-based paint thinner, some moth-proofing substances, flammable dust or other explosive or toxic vapors.
15. Do not use on leather, wax-polished furniture or floors, synthetic fabrics, velvet or other delicate, steam-sensitive materials.
16. Do not allow to be used as a toy. Pay close attention when used near children, pets or plants. Do not leave your Portable Steamer and Sanitizer unattended while plugged in.
17. This appliance is not intended for use by persons whose physical, sensory or mental capabilities, or lack of experience and knowledge prevents them from using the appliance safely without supervision or instruction by a responsible person to insure they can use the appliance safely.
18. Do not use for any purpose other than described in this User Manual. Use the product only for its intended use and only as described in this manual.
19. Use only manufacturer's recommended attachments – use of attachments not provided or sold by **HAAN®** may cause fire, electric shock or injury.
20. Never put any aromatic oils or perfumes, chemicals, alcohol or detergent products into the Portable Steamer and Sanitizer except those approved by **HAAN®**. Non-approved additives may damage the unit or make it unsafe for use.
21. Do not put any foreign objects into openings. Do not use with any opening blocked.
22. If the circuit breaker activates while using the steam function, discontinue product use immediately and contact the Customer Care Center. (Beware of the risk of electrical shock.) To avoid circuit overload, do not operate a high wattage appliance on the same circuit.
23. Do not allow the product to be disassembled and/or modified by anyone other than an authorized service technician. (Doing so can result in fire and/or electrical shock.)
24. If an extension cord is absolutely necessary, a 15-amp cord should be used. Cords rated at less may overheat. Care should be taken so that the cord cannot be pulled or tripped over.

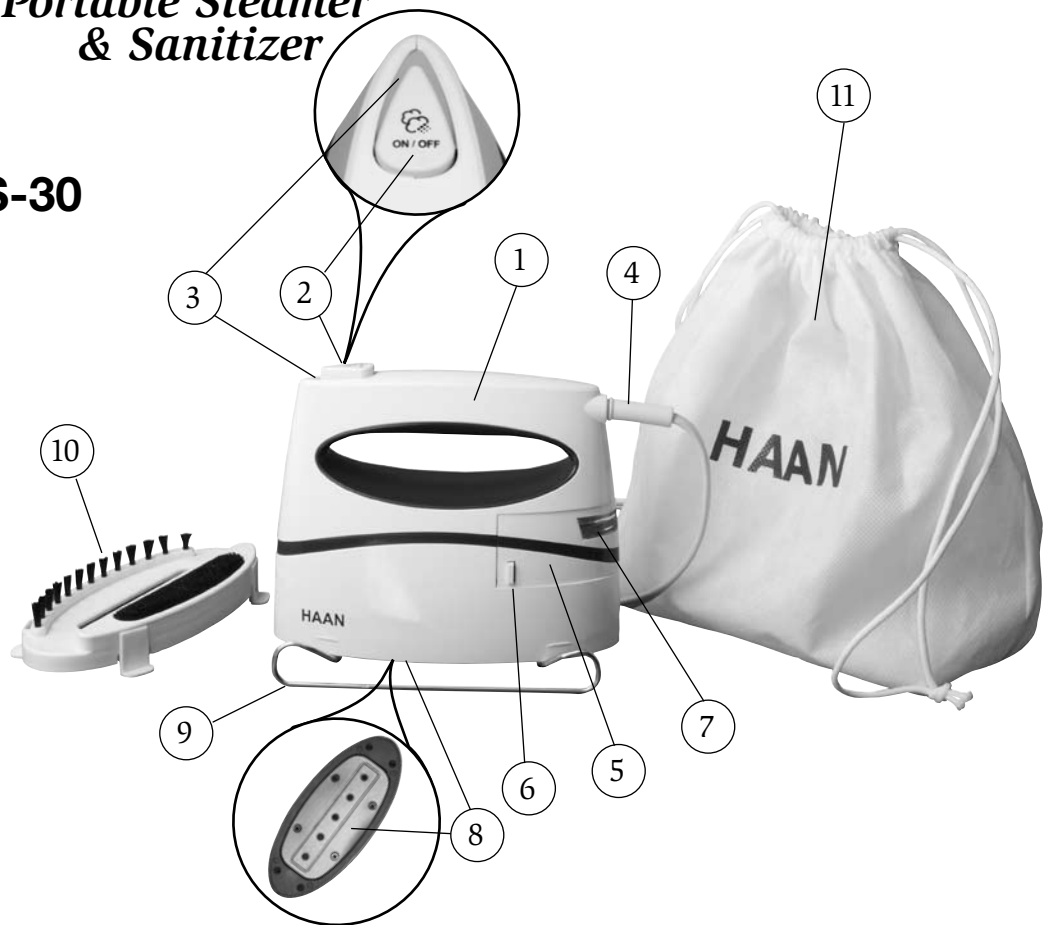


# QuickPro™

*Portable Steamer  
& Sanitizer*



**TS-30**





# Product Description

---



## **HELPFUL HAAN® HINT:**

5 Powerful Steam Jets are spaced perfectly to cover more area in less time. Hold the appliance parallel to the fabric surface, keeping a distance of 1.5" between the Steam Plate and the fabric. Slow guided motions are best.



## **HELPFUL HAAN® HINT:**

Using the **HAAN® Quick-Pro™** will not lift set-in stains from your clothes or fabric, but it may be used to remove most fresh, wet spills and stains. See pg 9, Step 5 for details.

## **FEATURES:**

1. **Easy Grip Handle** - designed for comfortable steaming.
2. **Continuous STEAM ON/OFF Button** - push ON and HOLD to activate the steam jets; release to turn them OFF and return to gentle steam.
3. **Indicator Light** - illuminates RED when appliance is ON and ready to use.
4. **Power Cord with Flexible Cord Support** - double insulated cord with a polarized 2-blade attachment plug, complete with a flexible cord support that strengthens cord connection.
5. **Removable Water Reservoir**- pulls out for easy filling and emptying.
6. **Quick-Release Tabs**- tabs on both sides push in to unlock the Water Reservoir and clip into place to lock Water Reservoir in place for safe use.
7. **Clear Water Level Window** - makes it easy to see when water is needed for continued use.
8. **Steam Plate with 5 Powerful Steam Jets** - spaced perfectly to cover the maximum area for steaming and sanitizing in less time.

## **Make sure to check for the following accessories!**

9. **Metal Resting Tray (1)** - safely holds the appliance while resting during use and when cooling down afterward.
10. **Combination Lint/Nap Brush - (1)** attach to Steam Plate to remove dust, lint or hair from clothing or upholstery with one side and use the stiff bristles to freshen the nap on garments and other fabric items.
11. **Storage Bag (1)** - made of strong, tear-resistant material to make it easy to pack and keep everything handy when needed.



## Before Using Your HAAN® QuickPro™:



### HELPFUL HAAN® HINT:

**DO NOT** add cleaning solutions, scented perfumes, oils or any other chemicals to the water used in this appliance, except those authorized by **HAAN®**. While it is acceptable to use regular tap water, if the tap water in your area is hard, we recommend you use distilled/purified water to extend the life of your appliance.

**ALWAYS empty water from water reservoir after use.** For safety purposes, be sure to unplug the appliance before emptying the reservoir. Always place the unit on the Metal Resting Tray to cool.

### IMPORTANT

This product is NOT to be used for space heating purposes.



### CAUTION

Use a grounded receptacle. If an extension cord is absolutely necessary, use only a heavy duty extension cord rated for 15 amps minimum

– DO NOT use an ordinary extension cord. Cords rated at less may overheat. Care should be taken so that the cord cannot be pulled or tripped over. To provide continued protection against the risk of electric shock, the **HAAN® QuickPro™** has a polarized 2-blade attachment plug (one blade is wider than the other). This plug will fit in a polarized outlet only one (1) way. If the plug does not fit in the outlet, reverse the plug. If it still does not fit, DO NOT force the plug. Contact a qualified electrician to install the proper outlet. DO NOT modify the plug in any way. Improper connection can result in electrical shock.

Always be sure that your Portable Steamer & Sanitizer is *UNPLUGGED* from the wall receptacle prior to filling the water tank.



### IMPORTANT

Check the fabric's label for manufacturer care recommendations. It is recommended that you test acrylic, nylon and other synthetic fabrics in an inconspicuous areas to ensure these fabrics are not damaged by hot steam. The **HAAN® QuickPro™** emits steam at 212°F. Test fabric for color fastness in an unobtrusive section of the garment like an inner seam. DO NOT touch silk or velvet with the steam plate.

Some garments can be steamed better from the inside. Heavier fabrics may require repeated steaming. Exercise caution at all times.

For very delicate fabrics, it is not recommended using the Combination Lint/Nap Brush attachment.

To avoid damage to clothes, keep a distance of 1.5” between the Steam Plate and the fabric. We recommend before first use, and after the appliance has been stored for any length of time, to test the steam burst before using on fabric.





Fig 1

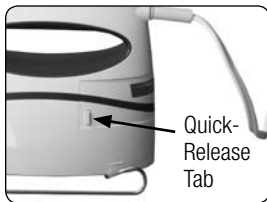


Fig 2

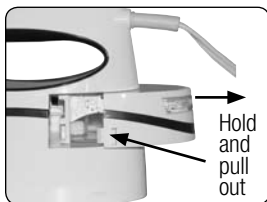


Fig 3

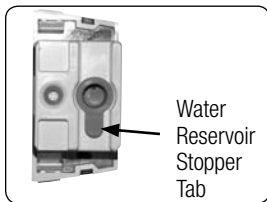
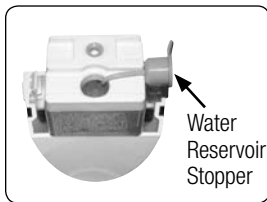


Fig 4



## Operating Instructions:

- 1) Remove all parts from the packaging.
- 2) Set the **HAAN® QuickPro™** on the Metal Resting Tray. Do not plug the unit in while adding water to the reservoir.
- 3) Remove the Water Reservoir by pressing the Quick-Release Tabs (Fig 1) on both sides of the appliance. Hold them in as you pull the Water Reservoir out of the rear of the appliance main body (Fig 2).

**NOTE:** The **HAAN® QuickPro™** has been designed to operate using untreated tap water. If the water being used is very hard (check with your local water authority) it could leave mineral deposits inside the appliance that can build-up over time and interfere with the function of the unit. It is possible to mix the tap water with distilled water in the following proportions to help reduce mineral build-up within the appliance and prolong the lifespan of your Portable Steamer & Sanitizer.

- 50% untreated tap water with 50% distilled or demineralized bottled water
- 4) Once removed from the main body, turn the Water Reservoir up to show the grey stopper. (Fig 3)
  - 5) Grasp the tab on the stopper and gently pull the stopper out (Fig 4). Remove it only enough to allow for adding water. **DO NOT** break the connecting elastic band.
  - 6) Add water to the reservoir thru the stopper hole until the reservoir is full. Do not overfill. Carefully replace the stopper and close it securely aligning the tab as shown (Fig. 3).
  - 7) Replace the Water Reservoir into the main body of the appliance. With the Quick-Release tabs at the inner bottom, slide the Water Reservoir in until the tabs clip securely (Fig 1).r



Fig 5



### HELPFUL HAAN® HINT:

Hold the appliance parallel to the fabric surface, keeping a distance of 1.5" between the Steam Plate and the fabric. Slow guided motions are best.

Fig 6



### HELPFUL HAAN® HINT:

The **HAAN® QuickPro™** steam plate gets very hot during use. Use caution while using this appliance. As it heats, the housing becomes warm. This is normal.

## Operating Instructions: (cont)

- 8) With the appliance sitting on the Metal Resting Tray, plug the **HAAN® QuickPro™** into a polarized outlet. This will start the heating cycle.
- 9) Once the Indicator light has illuminated RED, the appliance is ready to use. This should take no more than 30-40 seconds.
- 10) Lift the QuickPro™ off the Metal Resting Tray (Fig 5). To activate the steam jets press and hold the Continuous Steam ON/OFF button. You will hear the water pumping thru the heating unit and the steam being expelled. Begin steaming with the steamer plate facing away from you.
- 11) When you no longer see water in the reservoir through the clear Water Level Window (Fig. 6), or if steam stops coming out of the Steam Plate, place the unit on the Metal Resting Tray and unplug the appliance.
- 12) Allow the appliance to cool, approximately five (5) minutes before adding water to the reservoir by following steps 3-7.
- 13) If you are finished using the QuickPro™, allow the appliance to cool completely and empty any water left in the reservoir before storing it away. NEVER leave the appliance plugged in and unattended. Always empty the Water Reservoir after use.

NOTE: Heat concentrates the elements contained in water during evaporation. The types of water listed here may contain organic waste, minerals or chemical elements that can cause spitting, brown staining or premature wear on the appliance. The manufacturer recommends against the use of any of these water sources:

- water from clothes dryers
- scented or softened water
- water from refrigerators, batteries or air conditioners



Fig 7

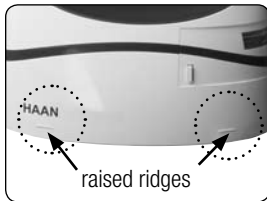


Fig 8

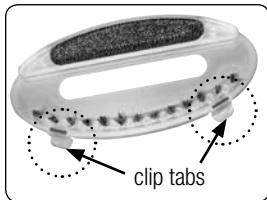


Fig 9

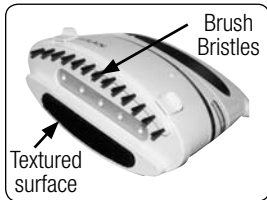


Fig 10



## Operating Instructions: (cont)

- rain water
- boiled, filtered or bottled water
- water from refrigerators, batteries or air conditioners
- use distilled or demineralized water only as advised on page 7.

### Using the Combination Lint/Nap Brush Accessory Attachment:

- 1) Before plugging the appliance in and while the Steam Plate is cool, attach the Combination Lint/Nap Brush Accessory by snapping it onto the Steam Plate.
- 2) On the both sides of the QuickPro™ you will see two (2) raised ridges near the Steam Plate (Fig 7). These correspond to the clip tabs on the accessory (Fig 8).
- 3) Push the Combination Lint/Nap Brush Accessory onto the Steam Plate until the clip tabs snap securely onto the ridges. This allows the Steam Jets clear access to help freshen the fabric (Fig 9).
- 4) Plug in the QuickPro™, wait for the Indicator light to turn Red and then use the appliance as described in Step 10 of the previous section. Use the textured surface of the accessory to remove hair, dust or lint from garment surfaces as you steam. The brush bristles can be used to freshen and lift the nap on the fabric as you sanitize the surface.
- 5) The QuickPro™ can be used to remove most fresh, wet spills and stains from fabrics. Hold the Steam Plate over the fresh stain and use the steam jets to penetrate the area. Use the Brush bristles to rub the saturated area gently. Take an absorbent towel and blot the area. Repeat as necessary until the stain is lifted.
- 6) When finished using the QuickPro™, unplug the unit and allow the appliance to cool completely while on the Metal Resting Tray. Remove the accessory attachment; it will snap off easily. Empty any residual water in the reservoir before storing the unit.



### **IMPORTANT**

Always be sure that your **HAAN® QuickPro™** is **UNPLUGGED** from the electrical outlet prior to cleaning or before emptying the Water Reservoir.



### **CAUTION**

Do not immerse your QuickPro™ in water or any other liquid.

- 1) Turn your QuickPro™ Portable Steamer & Sanitizer off by unplugging the unit from the electrical outlet.
- 2) Place the appliance on the Metal Resting Tray.
- 3) Prepare to store the QuickPro™ by gathering the power cord securely and safely.
- 4) Let your QuickPro™ Portable Steamer & Sanitizer cool completely while resting on the Metal Resting Tray.
- 5) Always empty the Water Reservoir once you have finished using your QuickPro™ Portable Steamer & Sanitizer and before you store or Portable with the appliance.
- 6) Once the Steam Plate is completely cool, remove the Combination Lint/Nap Accessory attachment. Store the attachment, along with the QuickPro™ and the Metal Resting Tray in the supplied Storage Bag
- 7) To clean the body of your QuickPro™ Portable Steamer & Sanitizer, wipe it down with a damp cloth.
- 8) Store the appliance upright in a protected dry area, sitting on the Metal Resting Tray, or inside the Storage Bag. The Storage Bag, with all parts included, can be hung by the drawstring from a hook in a closet until needed.

Any other maintenance or service not included in this manual should be performed by an authorized service representative.

For questions call the Customer Care Center:  
1-877-HAAN DIRECT (1-877-422-6347)



## **SANITIZE HOTEL BEDDING**

You'll sleep better when you know your hotel bedding is clean and fresh. With the **HAAN® QuickPro™** you can quickly sanitize pillows and blankets with 212°F steam that kills up to 99.9% of E. coli, Salmonella and other common household germs.



## **REMOVE ODORS**

From smoky hotel bedding and Portable-wear suits to sleeping bags and blankets, the **HAAN® QuickPro™** is perfect for removing odors from all sorts of fabrics. Simply move the QuickPro™ slowly across the fabric item and allow the steam to penetrate each section for a few seconds.



## **CARE FOR YOUR FINE TABLE LINENS**

At home, the QuickPro™ is the fast way to take wrinkles and fold lines out of table linens, so your fine fabric tablecloths and napkins will look magazine-perfect for every occasion.



## **TOUCH-UP DELICATE BLOUSES AND LIGHT SWEATERS**

Often, you'll get the best results on lightweight items by steaming the underside of the garment while gently pulling the item taut.



## **PROTECT BEDS AND SURFACES**

Be sure to use the stainless steel resting stand to heat up your **HAAN® QuickPro™** and when allowing it to cool after use. Never leave the steamer rest in one place (for example, a bed covering or sofa cushion) for any length of time.



**QUESTION: Can I use tap water in the HAAN® QuickPro™?**

Yes, tap water is fine, as long as the water in your area is not extremely hard. If you do have hard water, we recommend using distilled water. Either way, use only COLD water.



**QUESTION: Does the HAAN® QuickPro™ actually iron or press clothing?**

You can use the **HAAN® QuickPro™** in both the vertical and horizontal position to steam away wrinkles or press them flat on a bed or other suitable surface.



**QUESTION: Does the HAAN® QuickPro™ kill germs?**

Yes, the 212°F steam kills up to 99.9% of E.coli, Salmonella and other common household germs.



**QUESTION: Is the HAAN® QuickPro™ safe on all fabrics?**

The QuickPro™ can safely and gently steam most fabrics. However, we recommend you test a small seam, hem or hidden area of fabric before you steam an entire garment – especially for delicate or vintage fabrics.



**QUESTION: How long does a full reservoir of water in the HAAN® QuickPro™ last?**

With one tank of water, you can steam fabrics for approximately 5 minutes – perfect for quick touch ups when you're on the go.



This chapter summarizes the most common problems you could encounter with your Portable Steamer & Sanitizer. Please read the different sections for more details.

If you are unable to solve the problem, please contact our Customer Care Representatives at the number shown at the bottom of the page.



**PROBLEM: QuickPro™ does not operate.**

**Possible Cause:**

- 1) Power cord not firmly plugged into outlet.
- 2) No power in wall outlet.

**Possible Solution:**

- 1) Check plug in outlet and set plug firmly.
- 2) Check fuse or breaker. Replace fuse and/or reset breaker.



**PROBLEM: QuickPro™ does not emit steam.**

**Possible Cause:**

- 1) The appliance is not plugged in.
- 2) No water in water tank.
- 3) Water level is too low.
- 4) The Steam Button has not been primed.
- 5) The Water Reservoir is not in place.

**Possible Solution:**

- 1) Check that the appliance is correctly plugged in.
- 2) Add water to the Water Reservoir following the instructions on pg 7.
- 3) Unplug the appliance; allow it to cool and refill the Water Reservoir as outlined on pg 8, Steps 11-12.
- 4) To 'Prime' the steam jets, press the Continuous Steam Button for 4 seconds to begin steaming.
- 5) Be sure that the Water Reservoir has snapped into place.



**PROBLEM: QuickPro™ does not heat up.**

**Possible Cause:**

- 1) Power cord not firmly plugged into outlet.
- 2) No power in wall outlet.

**Possible Solution:**

- 1) Check plug in outlet and set plug firmly.
- 2) Check fuse or breaker. Replace fuse and/or reset breaker.

**PROBLEM: Water leaks or spits.**

**Possible Cause:**

- 1) Water Reservoir is not properly in place .
- 2) The appliance is not hot enough.

**Possible Solution:**

- 1) Be sure that the Water Reservoir has snapped into place.
- 2) Allow the appliance to heat for approximately 30 seconds (while on the Metal Resting Tray) before using.





## Product Specifications: Model TS-30

Color	Red & White
Size:	5.31" H x 2.99" W x 6.93" D
Weight:	28.4 oz. (805g)
Voltage/Hz	120 volts / 60 Hz
Wattage:	900 watts
Cord Length	7.87' (2.4m)
Tank Capacity	1.69 fluid ounces (50 cc)
Heat-up time	30-40 seconds
Operating Time	4 min. 30 sec. - 6 min. 30 sec.

\*Dimensions approximated. Dimensions include base and are measured without cord or attachments.



## One-Year Limited Warranty

Your **HAAN®** QuickPro™ Portable Steamer & Sanitizer is warranted to be free from defects in material and workmanship for a period of one (1) year from the date of purchase when utilized for normal household use by the original purchaser only. The included Warranty Registration Card should be filled out and returned within thirty (30) days of purchase. This will register your product. Should any defect covered by the terms of the limited warranty be discovered within one year, **HAAN®** Corporation will repair or replace the defective part provided the unit is returned by the original purchaser, freight prepaid, to: **HAAN®** Corporation, 1866 Colonial Village Lane, Lancaster, PA 17601. Proof of purchase is required and should accompany the return.

The liability under this warranty is limited solely to the cost of the replacement parts or the complete unit at our option. Labor charges are not included.

This warranty is extended to the original purchaser of the unit and excludes all other legal and/or conventional warranties. The responsibility of **HAAN®** Corporation, if any, is limited to the specific obligations expressly assumed by it under the terms of the limited warranty. In no event is **HAAN®** Corporation liable for incidental or consequential damages of any nature whatsoever. Some states/provinces do not permit the exclusion or limitation of incidental or consequential damages, so the above may not apply to you. This warranty gives you specific legal rights which vary from state to state or province to province.



**IMPORTANT:** Carefully pack item to avoid damage in shipping. Be sure to attach tag to item before packing with your name, complete address, and phone number with note giving purchase information, model number and what you believe is the problem with the item. We recommend you insure the package (as damage in shipping is not covered by our warranty). Mark the outside of your package "ATTENTION CUSTOMER SERVICE." We are constantly striving to improve our products; therefore, the specifications contained herein are subject to change without notice.

**Warranty Notice:** FAILURE TO COMPLETE AND RETURN THE PRODUCT REGISTRATION CARD WILL NOT DIMINISH YOUR WARRANTY RIGHTS.



## Contact Information

---

**HAAN®** Corporation  
1866 Colonial Village Lane  
Lancaster, PA 17601

Customer Care: 877-HAAN DIRECT  
877-422-6347

Web Address: [www.HAANUSA.com](http://www.HAANUSA.com)



**HAAN**®  
*engineering clean.*™

[www.HAANUSA.com](http://www.HAANUSA.com)

## Free Manuals Download Website

<http://myh66.com>

<http://usermanuals.us>

<http://www.somanuals.com>

<http://www.4manuals.cc>

<http://www.manual-lib.com>

<http://www.404manual.com>

<http://www.luxmanual.com>

<http://aubethermostatmanual.com>

Golf course search by state

<http://golfingnear.com>

Email search by domain

<http://emailbydomain.com>

Auto manuals search

<http://auto.somanuals.com>

TV manuals search

<http://tv.somanuals.com>