



USER Manual

 **Bluetooth**

***Bluetooth Slipper™
for GPS Receiver
HI-401BT***



Bluetooth Slipper™ for GPS Receiver

Table of Contents

Part I Getting Started

1.1 Introductions	2
1.2 Bluetooth Slipper Advantage	2

Part II Dimensions

2.1 HI-401BT BT Slipper	5
2.2 BT Slipper with multi-mode Foldable GPS receiver	6

Part III Bluetooth Slipper™ with Multi-Mode Foldable GPS receiver

3.1 Packaging	7
3.2 LED Indicator	8

Part IV System Specifications

4.1 Bluetooth Slipper Specifications	9
4.2 Multi-mode Foldable GPS receiver Specifications	10

Part VI Get Connected

5.1 Notebook Installations	11
5.2 PDA Installations	12



1. Getting Started

1.1 Introductions

The Bluetooth Slipper™ for GPS receiver is a Bluetooth cradle or docking station of the GPS receiver to transfer the GPS data wirelessly to the host devices, like, notebookPC, PocketPC, Smart Phone, TabletPC, etc. Simply insert the CompactFlash™ interface of the multi-mode foldable GPS receiver into the Bluetooth Slipper™, the two units become a Bluetooth GPS receiver while the GPS receiver receiving the satellites signal and the Bluetooth transmit the GPS data to the mobile device. It'll be a perfect tool for all kinds of global positioning applications, such as, in car, marine, aviation navigation, outdoor activities, places finding, etc. without the wire allover.

1.2 Bluetooth Slipper™ Advantages:

- 1. Modulize concept:** The multi-mode foldable GPS receiver can be used independently. (please see user manual for the multi-mode foldable GPS receiver)
- 2. Place on right place:** The metal plate on the bottom of the Bluetooth Slipper™ can be attached to the car holder with magnetic. The Bluetooth GPS receiver can be either placed on the back window of the car or on the front windshield Or, with belt clipper, user can clip the BTSlipper on the belt and get the best satellite reception in best angel.
- 3. Switchless design:** To turn on the Bluetooth Slipper™, simply insert and connect the CompactFlash™ part into the CF™ slot and turn off by disconnect the CF™ interface from the CF slot.
- 4. Changeable battery:** User can change the spare battery like mobile phone without interruptting the GPS positioning.
- 5. Multi-function Connector:** The function of the mini-1394 connector on the side are: a) Charging the battery in the Bluetooth Slipper™, b) Solar panel power add, c) Data Logger module.
- 6. Adjustable GPS antenna:** The multi-mode foldable GPS receiver on the Bluetooth Slipper™ can be adjusted in different angle to get the best satellite receptions.
- 7. Long Lasting Battery:** It lasts more than 8 hours for the standard battery. With the solar panel add, the battery can stay active for more than 12 hours depend on the sunlight.



GPS Receiver

Bluetooth Slipper™

Modulize Concept



Best Reception Angle

Place on Right Place: on the back of car



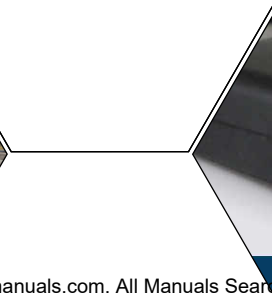
Place on Right Place: Clip on back



Place on Right Place: Clip on belt



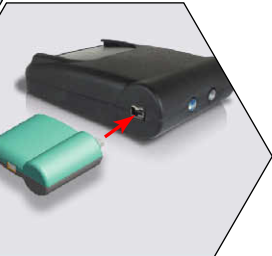
(Place on Right Place: Hang on neck)



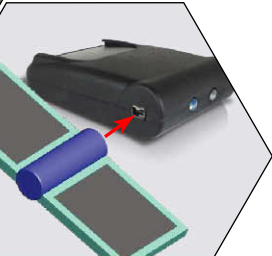
Switchless Design: Connect to Power on



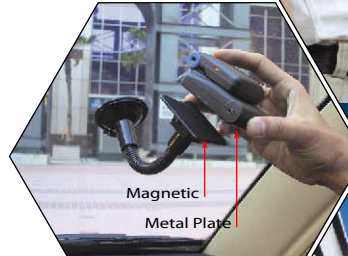
Changeable Battery



BT Slipper with Data Logger Dongle



BT Slipper with Solar Panel



Magnetic Metal Plate

Place on Right Place: on front of car



Mini-1394 Female Connector

Multi-function Connector



Unit: mm

2. Dimensions

Top View



Unit: mm

Bottom View



Top View

Build-in patch antenna



Bottom View

Battery Cap

Front View



Back View

Front View

Bluetooth indicator

Power charging indicator



Back View



Mini-1394 Connector

MMCX ext. antenna plug

LED indicator



Side View



Side View



Mini-1394 Female Connector



Fully Extended View





3. Bluetooth Slipper™ with Multi-Mode Foldable GPS receiver:

3.1 PACKAGING:

The standard package of the Bluetooth Slipper™ with Multi-Mode Foldable GPS receiver including:

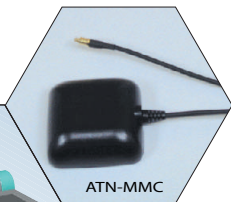
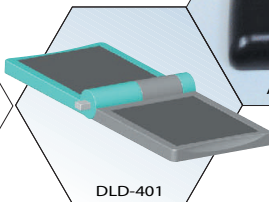
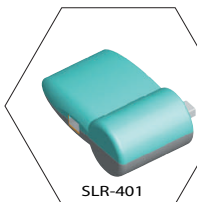
Model Name	Model #
1. Bluetooth Slipper™	HI-401BT
2. Rechargeble Li-Polymer Better 3.7V 1500mAh	401-BTT
3. Mini-1394 to Cigarette car charger	401-DCC
4. Mini-1394 to AC power adapter	401-ACC
5. Magnetic Car Holder	HOD-001
6. BTslipper pouch with clipper	LCS-401
7. BT Slipper User Manual	MAU-401
8. Mini CDs	CDR-01
9. Multi-Mode Foldable GPS receiver	HI-303E
10. Mini-1394 to PS/II Connecting cable	CAB-303E
11. Multi-Mode Foldable GPS receiver Pouch	LCS-303
12. Multi-Mode Foldable GPS receiver User Manual	MAU-303E





Optional Accessories:

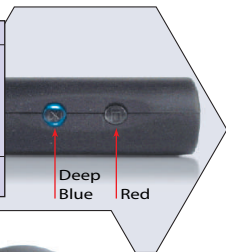
1. Swivel mini-1394 Solar Panel SLR-401
2. Mini-1394 Data Logger Dongle DLD-401
3. MMCX External Antenna (for the Multi-Mode Foldable GPS receiver) ATN-MMC



3.2 LED indicators:

On Bluetooth Slipper:

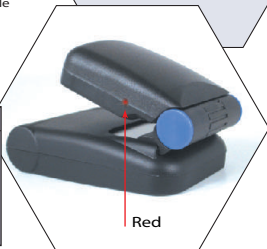
Symble	LED Color	Light Indication
Bluetooth connection Status	Deep Blue	Blinking: The Bluetooth is searching the host device or not connected* Stay On: The Bluetooth have found and connected with the host device
Battery	Red	Stay On: The battery charging



* As soon as the CF interface of multi-mode foldable GPS Connect to the CF slot inside the BT Slipper, the deep blue LED will start blinking

On Multi-Mode Foldable GPS Receiver:

LED Color	Light Indication
Blinking:	The GPS receiver is searching the satellite signals.
Stay On:	The GPS Receiver have fixed more than 4 satellites and in 3D positioning fix.





4. System Specifications:

4.1 Bluetooth Slipper Specifications:

Bluetooth V1.1 Compliances

Frequency Range:	2.4 ~ 2.4835 GHz unlicensed ISM band
Interface:	USB/UART/SPI
Receiver Sensitivity:	-80 dBm @ 0.1% BER
Transmitting Power:	Class 2 -6 dBm ~ +4 dBm
RF Input Impedance:	50 ohms
Frequency hopping:	1600hops/sec.
Baseband Crystal OSC:	16MHz
Data Rate:	Up to 723Kb/s
Operating Temperature:	-20°C ~ +80°C
Storage Temperature:	-30°C ~ +90°C
Supply Voltage:	Build-in Rechargeable Battery (3.7V 1500mAh)
Operation Time:	8 hrs after fully charged in continue mode
Transmitting Range:	10 meters (Typical)
Power Consumption:	45 mA (Typical)



4.2 Multi-mode Foldable GPS receiver Specifications:

Interfaces:	Compact Flash type 1 & Mini-1394
Protocol:	NMEA0183 GGA, GSA, GSV, RMC, VTG, GLL
Baud Rate:	1 Hz
Datum:	WGS84
Channel:	12 channel all-in-view tracking
Frequency:	L1, 1575.42MHz
Hot Start:	8 sec. Average
Warm Start:	38 sec. Average
Cold Start:	48 sec. Average
Reacquisition Time:	100 ms
Position Accuracy:	15m 2D RMS, SA off
Maximum Altitude:	18,000m
Maximum Velocity:	515m/s
Voltage:	DC 3.3V+-10%
Power consumption:	120mA continuous mode
Antenna Type:	Built-in active antenna
External Antenna	MMCX (Optional)
Connector:	
Dimension:	Fold 68 (L) x 48 (W) x 24 (H)mm
	Unfold 120 (L) x 48 (W) x 21 (H)mm
LED Indicator:	3D Positioning (on) or Searching GPS (blinking)
Operating Temperature:	-10• to +70•
Storage Temperature:	-40• to +85•
Operation Humidity:	95%, Non-Condensing



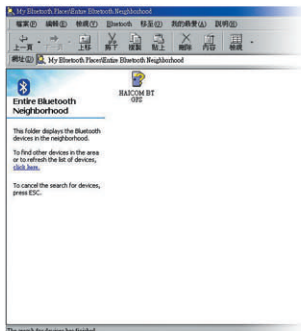
5. Get Connected; Installation Guide

5.1 Notebook Installations

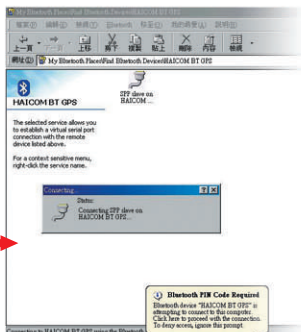
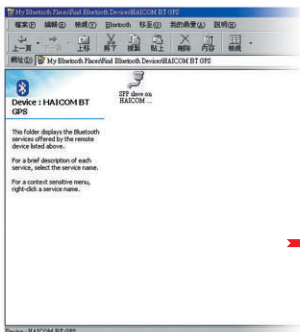
Run "My Bluetooth Places" and Double Click the "Find Bluetooth Devices" icon

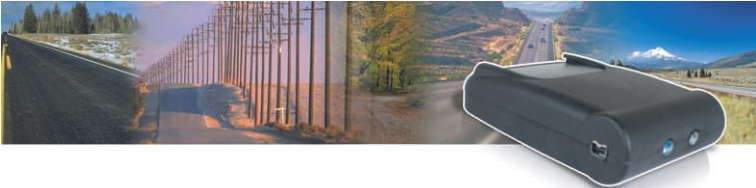


Double Click "HAICOM BT GPS"

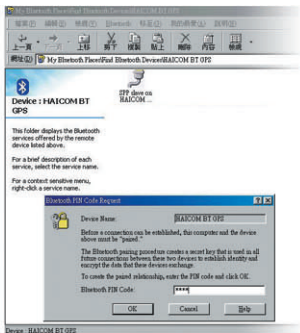


Double Click "SPP on HAICOM BT GPS"

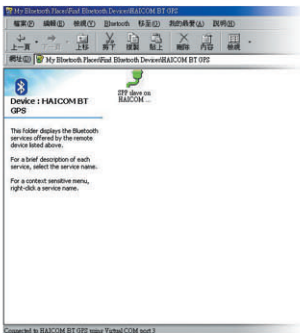




Key in pin code:0000

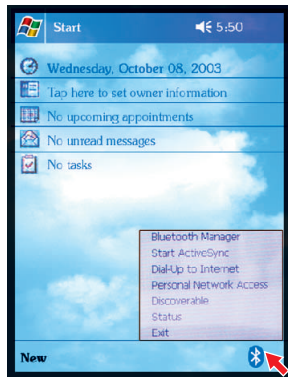
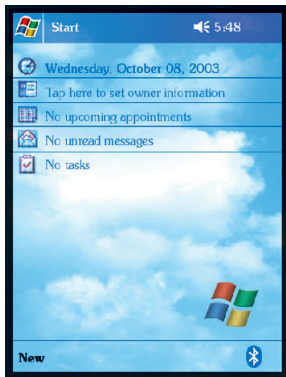


Connected



5.2 PDA Installations

Double Click the Bluetooth icon 





Double click "HAICOM BT GPS"

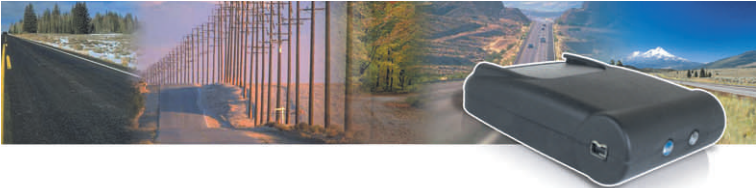


Key in pin code



Found the host device

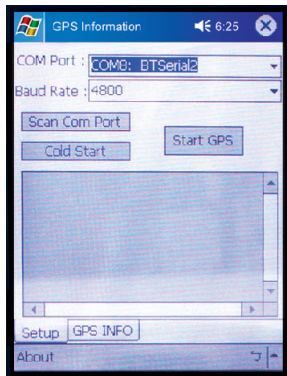




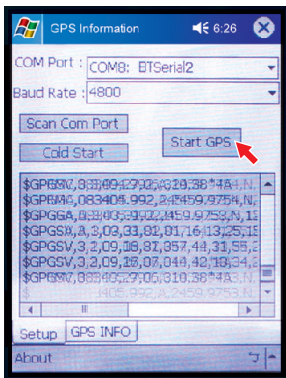
For Connected with device



Select the correct com port



Start GPS, NMEA message inflow



More satellites info





***Bluetooth Slipper™
for GPS Receiver***



4 710635 517229

Free Manuals Download Website

<http://myh66.com>

<http://usermanuals.us>

<http://www.somanuals.com>

<http://www.4manuals.cc>

<http://www.manual-lib.com>

<http://www.404manual.com>

<http://www.luxmanual.com>

<http://aubethermostatmanual.com>

Golf course search by state

<http://golfingnear.com>

Email search by domain

<http://emailbydomain.com>

Auto manuals search

<http://auto.somanuals.com>

TV manuals search

<http://tv.somanuals.com>