

Commercial Style 500 Watt Blender

Mixeur de Type Professionnel 500 watts

Licuada Estilo Comercial 500 vatios



User Manual
HB500BSS

Guide de l'Utilisateur
HB500BSS

Manual del Usuario Modelo
HB500BSS

Haier

Quality · Innovation · Style

IMPORTANT SAFEGUARDS

When using electrical appliances, basic safety precautions should always be followed, including the following:

- 1. Read all instructions carefully.**
- To protect against electrical shock, do not immerse the cord, plug or motor end of the appliance in water or any other liquids.
- Unplug from the outlet when not in use, before putting on or taking off parts, and before cleaning.
- Avoid contact with moving parts.
- Do not operate any appliance with a damaged cord or plug, or after the appliance malfunctions or is dropped or damaged in any manner. Contact the Customer Service Center for instructions.
- Close supervision is necessary when the appliance is used near children. This appliance is not recommended for use by children.
- KEEP HANDS AND UTENSILS OUT OF THE JAR WHILE BLENDING** to reduce the risk of severe injury to persons or damage to the blender. A spatula may be used, but only when the blender is not operating.
- The use of accessory attachments not recommended by the appliance manufacturer may cause hazard or injury and will void the warranty.
- Do not use outdoors.
- Do not let the cord hang over the edge of the table or countertop, or touch hot surfaces, including the stove.
- Blades are sharp. Handle carefully.
- Never place the blade assembly on the motor base without the jar properly attached.
- Always operate the blender with the cover in place.
- Oversized foods and metal utensils must not be inserted in the appliance as they may cause a fire or risk of electrical shock.
- When blending hot liquids, remove the measuring cup from the center of the cover by turning counter-clockwise.
- To disconnect, turn all controls to the OFF position, then remove the plug from the wall outlet by pulling on the plug. Never pull on the power cord.

17. Do not clean with metal scouring pads. Pieces may break off the pad and come in contact with electrical parts, creating a risk of electrical shock.
18. Do not store any materials other than the manufacturers recommended accessories in this unit when not in use.
19. This appliance is for household use only. Not for commercial use.
20. Do not use this appliance for anything other than intended use.

SAVE THESE INSTRUCTIONS

HOUSEHOLD USE ONLY

Polarized Plug

This appliance is equipped with a polarized plug (one blade is wider than the other). To reduce the risk of electric shock, this plug is intended to fit into a polarized outlet only one way. This is a safety feature. If the plug does not fit fully into the outlet, try reversing the plug. If it still does not fit, contact a qualified electrician for assistance. Do not attempt to modify this plug in any way. Do not attempt to defeat the safety purpose of this polarized plug.

A short power supply cord is provided to reduce the hazards resulting from entanglement or tripping over a longer cord. If it is necessary to use an extension cord:

- A. The marked rating of the extension cord must be equal to or greater than the rating of this appliance.
- B. It should be positioned such that it does not drape over the counter or tabletop where it can be pulled on children or tripped over.

Thank you for using our Haier product. This easy-to-use manual will guide you in getting the best use of your blender.

Model number

Date of purchase

Remember to record the model and serial number. They are on a label on the bottom of the blender.

Staple your receipt to your manual.

You will need it to obtain warranty service.

Table of Contents

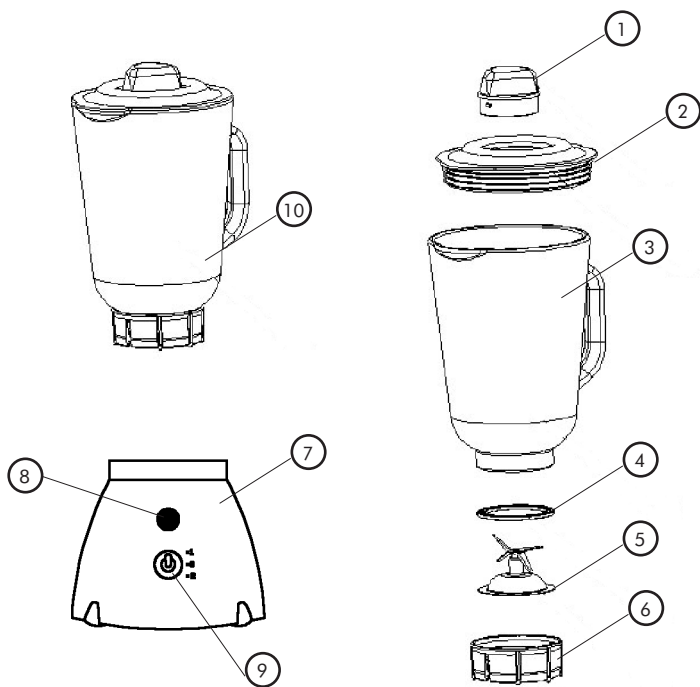
| | PAGE |
|--|-------------|
| Important Safeguards | 1 |
| Before Using for the First Time | 4 |
| Parts and Accessories | 5 |
| Assembling the Blender | 6 |
| Using the Blender | 6 |
| Useful Tips | 8 |
| Cleaning and Maintenance | 9 |
| Quick Cleaning | 9 |
| Thorough Cleaning..... | 9 |
| Storage | 9 |
| Limited Warranty | 10 |

Before Using for the First Time

Before using your blender for the first time, be sure to do the following:

- Read all instructions in this manual.
- Carefully unpack the blender and remove all packaging materials and accessories. Be sure not to discard any of the accessories accidentally.
- Handle the blade assembly carefully. It is sharp!
- Place the blender on a dry, level surface.
- Wash the blade assembly, glass jar, gasket, cover and measuring cup in warm, soapy water. Rinse and dry thoroughly.
- Wipe the motor base with a clean, damp cloth. This will remove any dust that may have accumulated during packaging. (Do not use harsh or abrasive detergents to clean any part of this blender.)
- **Warning!** Do not immerse the blender base, cord or plug in water or any other liquids.

Parts and Accessories



1. Measuring Cup
2. Cover
3. 48 oz. Glass Jar
4. Gasket
5. Blade Assembly

6. Collar
7. Motor Base
8. Pulse Button
9. Power Switch
10. Jar Assembly

Assembling the Blender

1. Place the blender on a flat, level surface. Always operate the blender on a clean, dry surface.
2. Place the gasket (4) around the blade assembly (5).
3. Place the blade assembly (5) with the gasket (4) into the collar (6).
4. Insert the assembled collar (6) into the bottom of the glass jar (3) and turn clockwise to secure tightly. Always do this prior to placing on top of the motor base.
5. Insert the measuring cup (1) into the cover (2) and turn clockwise to secure.
6. Place the cover (2) inside the top of the glass jar (3). Push in securely to prevent leaking and splashing. Never operate the blender without the cover in place.
7. Place the jar assembly (10) onto the motor base (7) and press down until securely engaged.
8. Make sure that the power switch (9) is set in the "0" off position.
9. Uncoil the required length of the power cord.
10. Plug the blender into a 120V, 60 Hz AC-only outlet. Your blender is now ready for use!
11. Before removing the jar assembly from the blender base after use, be sure the power switch is in the "0" off position.

Using the Blender

1. Make sure that the power cord is unplugged and that the power switch is in the "0" off position.
2. Check that all parts of the jar assembly are secured in their proper positions.

Warning! The blade assembly must be securely tightened to the jar before food or liquid is placed inside the jar.

3. Firmly place the jar assembly onto the motor base so that it is secure.

Note: Never place the blade assembly on the motor base without the jar being completely assembled and securely tightened.

4. Check that the power switch is set in the "0" off position and plug the blender into a standard polarized outlet.

5. Add the ingredients to be processed into the glass jar.
6. Put the cover with the measuring cup into the glass jar and press down to secure.
7. The blender has 3 settings. Turn the power switch to the desired setting or press the black button to pulse. Always hold the top of the glass jar while blending.

Speed Setting

0 = Off

1 = Low

2 = High

Black Button = Pulse

Usage

For turning off the power

For light usage with liquids

For mixing liquids with solid foods

For crushing ice and solid foods in short, powerful bursts

Note: The pulse setting does not permanently engage in the pulse setting. It will return to the off setting as soon as the button is released. Either press and hold the button in the pulse setting or press repeatedly.

Operate the blender for a maximum of 60 seconds at a time or alternate 60 seconds on, then 60 seconds off to prevent overheating or consequent damage to the blender. For continuous blending action, set the power switch to either the Low or High setting. For short bursts of high speed blending, use the Pulse setting.

When crushing ice alone, add a small amount of water since ice will not crush without some form of liquid. For best results, add 1/2 cup of water for every 1-1/2 cups of ice. Drain any excess water after blending if only ice is required.

8. After using the blender, always move the switch back to the "0" off setting and unplug the appliance from the outlet.
9. To remove the glass jar, simply lift it off the motor base. It is not necessary to rotate the glass jar to remove it.
10. Always clean the jar assembly after each use.

USEFUL TIPS

- Always keep the cover on the jar while blending.
- Always hold the jar while blending.
- Never use any utensils, including spatulas, in the jar while the blender is operating. Always turn the power switch to the "0" off position first.
- When blending solid or thick liquid ingredients, use the Pulse setting to prevent blades from becoming stuck.
- If food or ice becomes clumped, turn the blender off and use a rubber spatula to redistribute the ingredients.
- Always place liquid ingredients into the jar first, unless the recipe specifically states otherwise.
- When crushing ice alone, add a small quantity of water.
- Smaller ice cubes can be crushed faster than larger ice cubes.
- When blending solid foods, always cut them into pieces no larger than 1" before placing them into the glass jar.
- Blend no more than 1/2 cup of solid foods at a time. This will speed the blending process and reduce wear on the blades and motor. If too much food is blended at one time, the motor may stall. If this happens, turn the power to the "0" off position and remove a portion of the food. Repeat the blending process.
- If additional foods, ice or liquids need to be added to the jar while blending, remove the measuring cup from the cover by turning counter-clockwise and add the ingredients from the opening in the cover. Be sure that food is cut into 1" pieces first and ice cubes are added one piece at a time. Wait a few seconds between adding each ice cube so that the blender can properly blend the ice.
- Remember to replace the measuring cup when all ingredients have been added.
- Be careful when blending hot liquids. Remove the measuring cup while blending hot liquids to release steam and condensation that would build up in the jar.
- Avoid over-blending. Usually, only a few seconds is needed to blend the ingredients, not a few minutes.
- Chill the jar in the freezer before blending frozen drinks.
- When removing the jar from the base, be sure that the motor has stopped completely.

Cleaning and Maintenance

Warning! Never immerse the motor base, power cord and plug in water or other liquids as this may cause a risk of fire or electrical shock. Do not use harsh or abrasive cleaners on any part of the blender.

Quick Cleaning

- Make sure that the power switch is in the "0" off position.
- Remove the glass jar from the motor base and rinse with warm water to remove large food particles.
- Fill the glass jar with 1-1/2 cups of warm, soapy water and cover tightly.

Note: Never use boiling water as it may damage the blade assembly and shorten the life of the blender. Boiling water may also cause steam buildup and cause personal injury.

- Replace the jar on the motor base.
- Press the Pulse button for a few seconds and repeat several times.
- Remove the jar from the motor base and rinse well.
- Repeat as necessary.
- Dry thoroughly.

Thorough Cleaning

- Make sure that the power switch is in the "0" off position.
- Always unplug the blender before cleaning.
- Remove the glass jar from the motor base and rinse with warm water to remove large food particles.
- Disassemble the jar assembly parts. Be careful when handling the blade assembly.
- Wash the jar, cover, measuring cup, gasket, collar and blade assembly in warm, soapy water.

Note: All components of the jar assembly are dishwasher safe. The cover and the gasket should be washed on the upper rack of the dishwasher.

- Dry thoroughly.
- Wipe the power cord and the motor base with a clean, damp cloth and wipe dry.

Storage

Store the blender fully assembled and in an upright position in a clean, dry cabinet.

Limited Warranty

Full One Year

This warranty covers all defects in workmanship or materials for a period of 12 months from the date of purchase, provided you are able to present a valid proof-of-purchase (the original receipt)

Exceptions: Commercial or Rental Use Warranty is 90 days from date of original purchase.

This warranty covers appliances within the Continental United States, Puerto Rico and Canada.

What is not covered by this warranty:

Damage from other than normal use or improper installation.

Damage from misuse, abuse, accident, alteration, lack of proper care and maintenance.

Failure caused by build-up of food matter or water deposits.

Product, whose rating label has been removed or altered.

Product serviced by other than authorized service center.

Replacement or repair of household fuses, circuit breakers or wiring.

Labor, shipping charges and replacement of defective parts beyond the initial 12-month period.

Do not return this product to the store.

If you need assistance with this product, please contact "Haier Customer Satisfaction Service at 1-877-337-3639 between 9:00 AM and 5:00 PM (EST) Monday to Friday.

Before calling, please have the following information available:

Model number of your appliance. The name and address of the store you purchased the unit from and the date of purchase. A clear description of the problem.

Haier will repair or replace any part free of charge including labor that fails due to a defect in materials or workmanship, or replace with a comparable model.

THIS LIMITED WARRANTY IS GIVEN IN LIEU OF ALL OTHER WARRANTIES, EXPRESSED OR, INCLUDING THE WARRANTIES OF MERCHANTABILITY AND FITNESS FOR A PARTICULAR PURPOSE.

The remedy provided in this warranty is exclusive and is granted in lieu of all other remedies.

This warranty does not cover incidental or consequential damages, so the abovelimitations may not apply to you. Some states do not allow limitations on how long an implied warranty lasts, so the above limitations may not apply to you.

This warranty gives you specific legal rights, and you may have other rights, which vary, from state to state.

Haier America
New York, NY 10018

IMPORTANT

Do Not Return This Product To The Store

If you have a problem with this product, please contact the "Haier Customer Satisfaction Center" at 1-877-337-3639.

DATED PROOF OF PURCHASE REQUIRED FOR WARRANTY SERVICE

IMPORTANT

Ne pas Réexpédier ce Produit au Magasin

Pour tout problème concernant ce produit, veuillez contacter le service des consommateurs 'Haier Customer Satisfaction Center' au 1-877-337-3639.
UNE PREUVE D'ACHAT DATEE EST REQUISE POUR BENEFICIER DE LA GARANTIE.

IMPORTANTE

No regrese este producto a la tienda

Si tiene algún problema con este producto, por favor contacte el "Centro de Servicio al Consumidor de Haier" al 1-877-337-3639 (Válido solo en E.U.A).

NECESITA UNA PRUEBA DE COMPRA FECHADA PARA EL SERVICIO DE LA GARANTIA

120V, 60 Hz

**Made in China
Fabriqué en Chine
Hecho en China**

Haier

**Haier America
New York, NY 10018**

Printed in China

Free Manuals Download Website

<http://myh66.com>

<http://usermanuals.us>

<http://www.somanuals.com>

<http://www.4manuals.cc>

<http://www.manual-lib.com>

<http://www.404manual.com>

<http://www.luxmanual.com>

<http://aubethermostatmanual.com>

Golf course search by state

<http://golfingnear.com>

Email search by domain

<http://emailbydomain.com>

Auto manuals search

<http://auto.somanuals.com>

TV manuals search

<http://tv.somanuals.com>