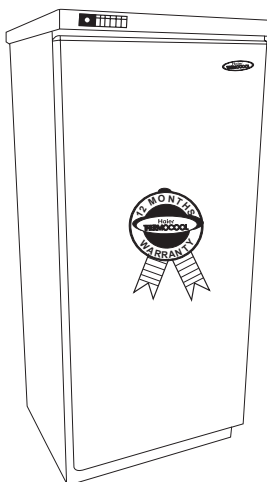




HF-240T

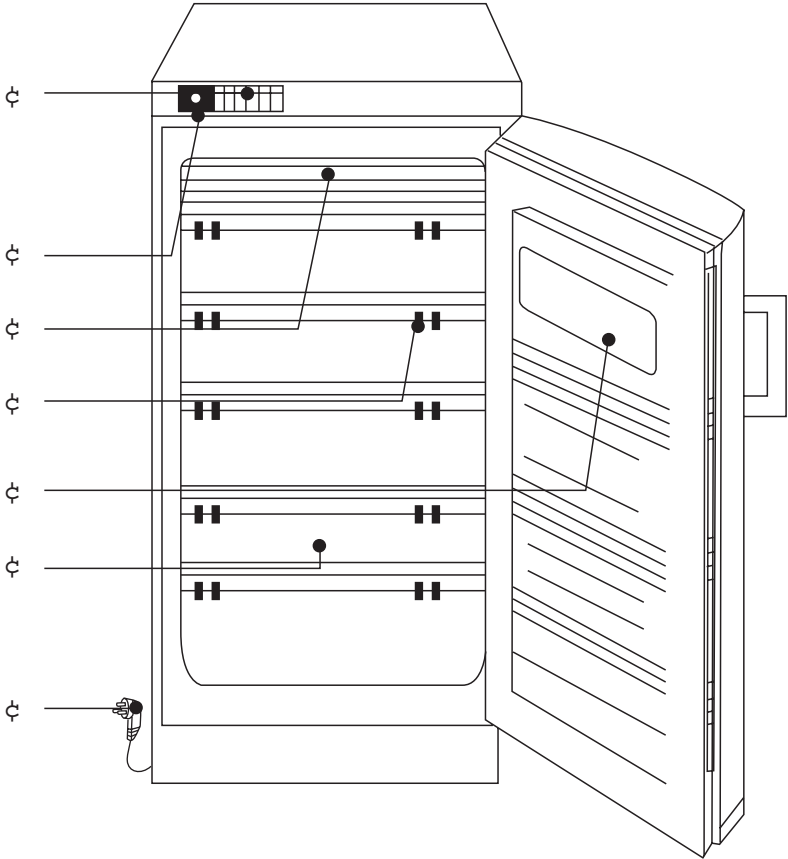
Freezer

Owner's Manual



IMPORTANT: Congratulations for choosing a high quality refrigerator by Haier **THERMOCOOL**. Please read this owner's manual carefully before using your new refrigerator. Now you will be cool, with Haier **THERMOCOOL**.

Parts



Parts

- 1.Control Panel
- 2.Temperature Indicator
- 3.Freezer Tray
- 4.Slider
- 5.Freezer Chart
- 6.Drawer
- 7.Plug

The manufacturer reserves the right to improve the product from time to time without further notice.

Cautions

Disposal of the old appliance

Before disposing an old appliance that goes out of use, please make sure it's inoperative and safe. Unplug the appliance and remove or destroy all of the springs, latches, or bolt-locks in order to avoid the risk of child entrapment.

It must be noticed that refrigeration system contains insulating gases and refrigerants, which require specialized waste disposal. The valuable materials contained in a refrigerator can be recycled. Contact your local waste disposal center for proper disposal of an old appliance and contact your local authority or your dealer if you have any question. Please ensure that the pipework of your refrigerator does not get damaged prior to being picked up by the relevant waste disposal center, and contribute to environmental awareness by insisting on an appropriate, anti-pollution method of disposal.

Disposal of the packaging of your new appliance

All the packaging materials employed in the package of your new appliance may be disposed without any danger to the environment.

The cardboard box may be broken or cut into smaller pieces and given to a waste paper disposal service. The wrapping foil is made of polyethylene and the polyethylene pads and stuffing contain no fluorochloric hydrocarbon.

All these valuable materials may be taken to a waste collecting center and used again after adequate recycling.

Consult your local authorities for the name and address of the waste materials collecting centers and waste paper disposal services nearest to your house.

Safety Instructions and Warnings

Before starting the appliance, read the information given in the User's Guide carefully. The User's Guide contains very important observations relating to the assembly, operation and maintenance of the appliance.

Keep the User's Guide in a safe place and remember to hand it over to the subsequent owner, if you ever sell the appliance.

The manufacturer does not accept responsibility for any damages that may arise due to non-observation of the following instruction.

- Damaged appliances are not to be put into operation. In case of doubt, consult your supplier.
- Connection and installation of the appliance are to be carried out in strict compliance with the relative instructions set forth in the User's Guide.

Cautions

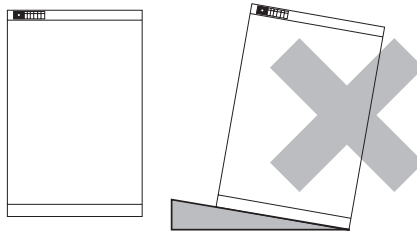
- For the purpose of safety, the appliance must be properly grounded in accordance with specifications.
- Always remember to unplug the appliance before cleaning. Never unplug your refrigerator by pulling on the power cord. Always grip plug firmly and pull straight out from the outlet.
- All electrical repairs must be carried out by qualified electricians. Inadequate repairs may result in a major source of danger for the user of the appliance.
- Keep high-proof beverages in airtight bottles or containers and always store in an upright position. In addition, do not store any explosive substances inside the appliance-
Danger of explosion!
- Do not damage any parts of the appliance that carry refrigerant by piercing or perforating the refrigerant's grooves with sharp or pointed items, crushing or twisting any tubes, or scraping the coatings off the surfaces. If the refrigerant spurts out and gets into eyes, it may result in serious eye injuries.
- Do not obstruct or cover the ventilation grille of the appliance.
- Do not allow children to play with the appliance. In no case should children be allowed to sit on the drawers or hang to the door.
- After installation of the appliance, the plug should be easily accessible.
- If the power cable is damaged, an approved cable provided by a manufacturer or a service agent must be used for replacement.
- Warning: Keep the appliance well ventilated; remove any transport supports from cavity.
- Warning: Do not use hard objects to remove frost.
- Warning: Ensure the refrigeration pipeline cannot be damaged.
- Warning: Do not use electric appliances within the food storage compartment except for models recommended by the manufacturer.

Specifications

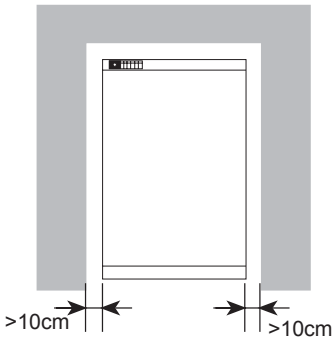
- This appliance is designed for food refrigeration, ice making and frozen food storage.
- It is intended strictly for household use. If using it for industrial or commercial purpose, be sure to observe the relevant norms and regulations.
- The refrigerating circuit is leak-proof.

Installation

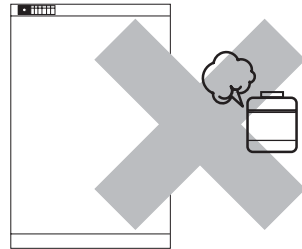
- The appliance must stand on even flooring. If the freezer is not level, adjust the front leveling leg to raise or lower it.



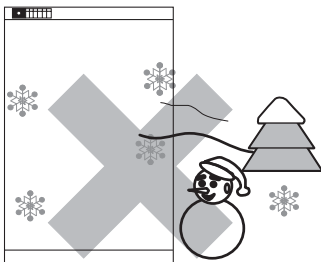
- Install the appliance in a wellventilated room. Allow 10cm on each side and 10cm over the top of the freezer for easy installation and proper air circulation.



- Do not expose the appliance to direct sunlight or a heat source as cookers, radiators, heaters, etc.



- An extremely cold room is unsuitable for installation of the appliance.



- To prevent electric shock, do not expose the appliance to rain or moisture.



Basic Operation

- Please clean inner compartment of the appliance before the initial start-up.
- After the appliance is levelled and cleaned, allow it to stand still for 30 minutes before start-up.

Reversible door

Reversible door available. To Reverse the door, follow the steps described as below:

1. Remove the two screws at lower hinge for later use.

2. Take out the door downwards and put it aside.

3. Remove component '1' and fix it in the corresponding position of the right side. Fasten it.

4. Remove component '3' and fix it in the left hole of lower hinge '2'.

5. Remove the upper hinge '4' and fix it in the corresponding position of the left side.

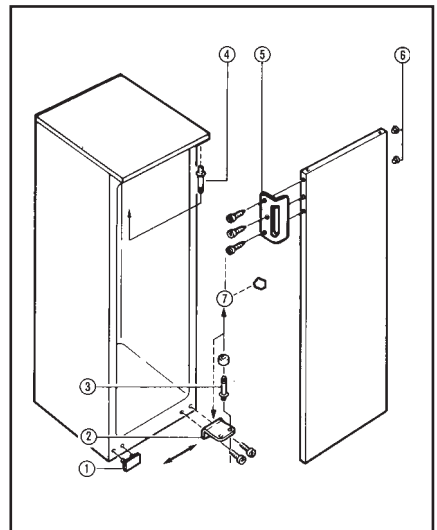
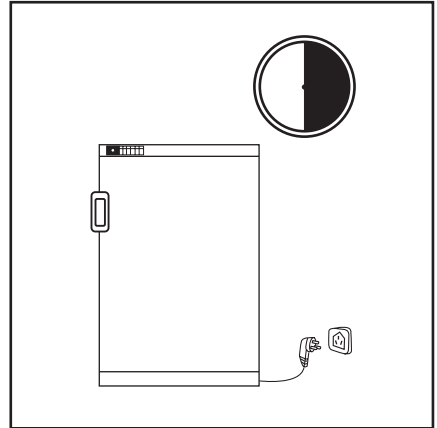
6. Install the door to the hinge '4' carefully .

7. Install the two screws dismantled in step 1 to the lower hinge '2' on the left side.

8. Remove handle plug '6' for later use.

9. Remove the screw cover and screw '7' of the door handle, fix the door handle '5' to the corresponding position on the right side and fasten it. Install the handle plug dismantled in step 8 to the right side.

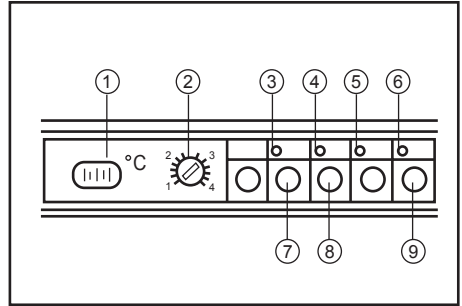
10. After reassembling, open the door for several times to make sure that all screws and hinges are well fastened.



Basic Operation

Illustration of Control Panel

1. Temperature indicator
2. Temperature regulator
3. Green power indicator
4. Yellow fast-freeze indicator
5. Red warning indicator
6. Orange buzzer-off indicator
7. On/Off button
8. Fast freeze button
9. Buzzer-off button



Green power indicator (3)

The green power indicator lights after the appliance is started. If it doesn't work, check:

- whether the plug connection is loose
- broken fuse or power failure
- whether the power switch is off.

Red warning indicator (5)

The red warning indicator lights with buzzing signal when the inner temperature is not cold enough. The reason may be:

- the appliance is newly started.
- there is large amount of fresh food in the appliance.
- the temperature regulator is adjusted from a low setting to a higher one.

The red warning indicator goes off automatically when the inner temperature is cold enough. If the red warning indicator lights irregularly, check:

- whether the freezer door is well closed.
- whether there was a long power failure before.

Yellow fast-freeze indicator (4)

- Press the fast-freeze button to start the system. The yellow indicator lights. Press the fast-freeze button again to stop the system and the yellow indicator goes off.

Orange buzzer-off indicator (6)

- The buzzer-off function makes it possible to stop long buzzing as desire.
- Press button (9) to turn off the buzzing and the buzzer-off indicator lights.
- Press button (9) again and the orange indicator goes off.

Basic Operation

Start-up

★ Start the appliance 4 hours before storing foods in it.

★ The On/Off button is children-proof. Use a thin and flat tool (e.g. a pen) to press the light color circle on the button when starting the appliance. The green power indicator and the red warning indicator are turned on with buzzing signal.

★ The red warning indicator is off after the inner compartment is cold enough.

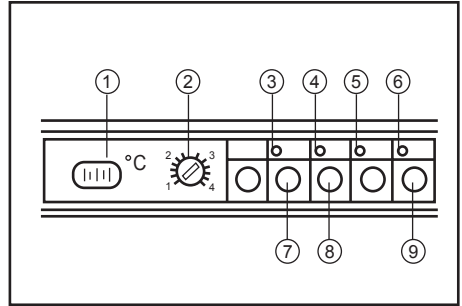
Temperature Display

★ The temperature indicator shows a temperature of reference.

★ The temperature indicator (1) is independent of the power supply. It shows the max. temperature value of frozen foods when the appliance is in normal operation.

★ When temperature regulator is adjusted, the temperature of frozen foods changes accordingly as well as the temperature display.

★ When the appliance door is opened for food arrangement, the temperature indicator shows a higher figure because of cold air escape. The figure will keep unchanged if the door is opened and then shut quickly.



Temperature Selection

★ The inner temperature may be adjusted by the regulator (2). Use an accessory key or a coin to rotate the regulator.

☆ Position '1' : Min. capacity

☆ Position '4' : Max. capacity

★ Generally, the regulator is to be set between position '2' and '3'.

Note:

When the regulator is adjusted, it takes some time for the temperature of the inner compartment to change accordingly. The period will be longer or shorter, depending on the ambient temperature, amount of foods and how often the door is opened.

Basic Operation

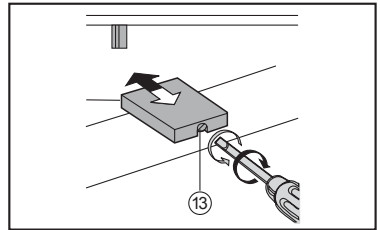
Door switch

Functions of the door switch (10)

- Warning signal at door opening
- Switch of illuminating light

After the freezer is operation, the door switch is at position 'II' when the appliance door is opened. At the moment:

- the illuminating lamp (12) lights.
- when the door has been kept open for 30 seconds or more, the door alarm rings and the red light twinkles to remind you to close the door promptly.



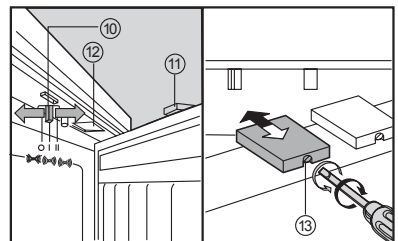
After the door is well closed, the door switch is at position 'I'. At the moment:

- the illuminating lamp goes out .
- the alarm stops and the red light goes out. (The red light keeps twinkling if the inner temperature is not cold enough.)

Note: It's advisable not to adjust the door switch (10) to position '0', otherwise the door switch loses all the functions mentioned above. At the moment:

- the illuminating lamp doesn't light.
- the alarm doesn't ring .

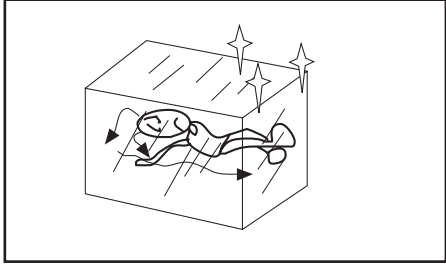
If the door switch is adjusted to position '0' by mistake, it can be restored to position 'I' or 'II' by hand. If the stop block (11) doesn't work when the door is opened or closed, rotate the screw (13) as illustrated. If rotated clockwise, the stop block moves forwards. The stop block moves backwards when the screw is rotated anti-clockwise.



Operation Instructions

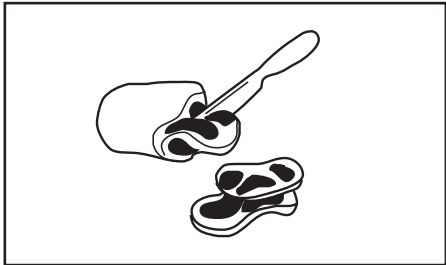
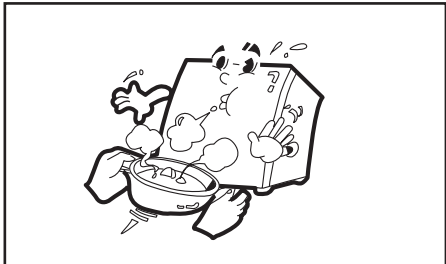
Use the freezer for long-time food storage.

The inner temperature of the freezer is lower than $-18\text{ }^{\circ}\text{C}$. Bacteria reproduction is completely suppressed under such circumstance. Therefore, the freezer is suitable for long-time food storage, provided that the expiry date on the food package is observed.



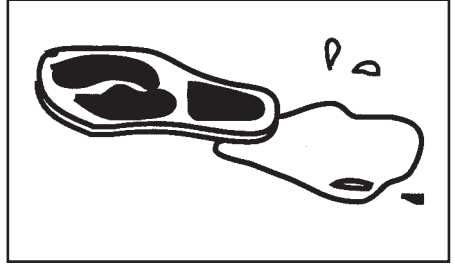
Tips for freezing

- The amount of food to be frozen at one time should not exceed the freeze capacity of the freezer.
- Allow warm food or beverage to cool down before placing them inside the appliance.
- Divide a large amount into smaller pieces that are easy to be frozen thoroughly, so that the quality of food is best preserved.
- Wrap or cover foods well before storing them into the freezer. The packing material must be durable, odorless, impermeable and not breathable so as to keep the foods in good condition.

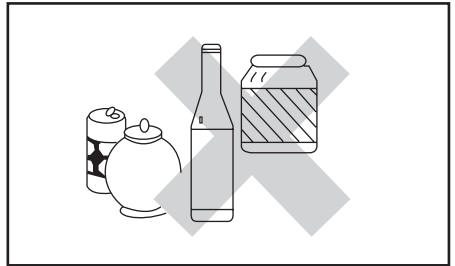


Operation Instructions

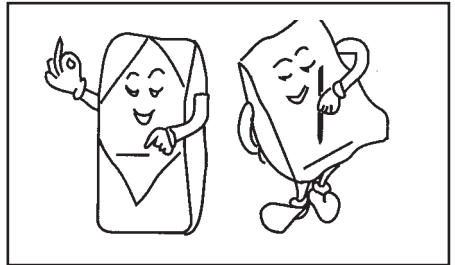
- It's advisable to take out the necessary amount of food only. Don't refreeze foods that have been thawed completely. Cook the thawed foods before refreezing them.



- Do not Store bottles of beverages inside the appliance.

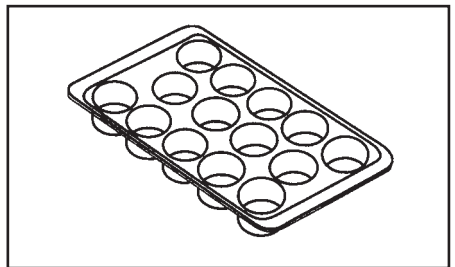


- When storing frozen foods, the description of storage time must be observed. Label on the package the expiry date for reference.



Ice Making

Fill 3/4 of the ice tray with water and place it in the freezer compartment. To remove the ice cube, twist the ice tray gently or has it stay in running water for a while.

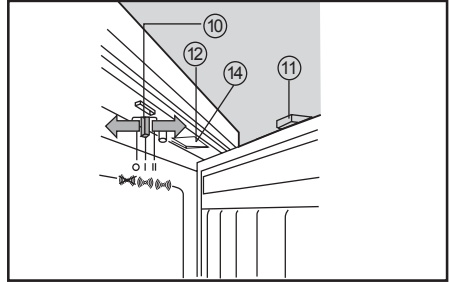


Operation Instructions

Illuminating light

● The technical parameter is 220V-240V~/50Hz, 15W. Light bulbs with the power larger than 15W are strictly prohibited.

Unplug the appliance before replacing the light bulb. Pry up the light cover (14) with a flat screw driver. Take out the light cover and then screw out the light bulb (12).



Long-term storage of food

As the freezer storage temperature is very low, fresh food can be stored in the freezer compartment for a long time. Food requiring long-term storage can be stored in the frozen food compartment. Attention should be paid to the storage information printed on the food packing.

Suggested storage period is as follows:

Food	Edibility(month)	Maximum(month)
Chicken, beef, mutton and shrimps	4	9
Dumplings, ribs and ice-creams	4	6
Cakes, breads, sliced meat and cheese	2	6
Seafood, sausages	1	3

Storage period is subject to the detailed information on the food packing, property of the food for storage and special requirements.

Defrosting/Cleaning

Defrosting

● The freezer compartment ices up when the refrigerating system is working. A thick layer of frost or ice will increase energy consumption. When the layer is as thick as 4 to 6 mm, use a plastic scraper to remove it.

Never use a metallic tool to defrost, to protect the appliance from damage.

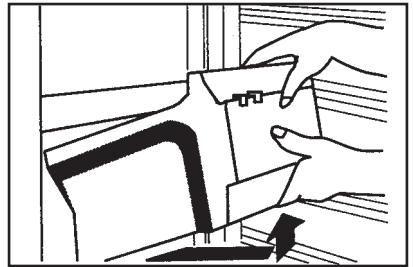
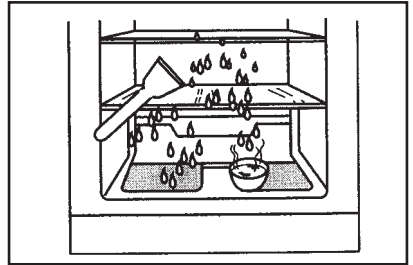
● Unplug the appliance before defrosting. Remove the food and ice cube tray from the freezer compartment. Wrap foods in several layers of newspaper and store in a cold place.

● To take out the drawer, pull forward, tilt up and remove it.

● To speed up the defrosting process, place a saucepan of warm water (water temperature lower than 70°C) in the refrigerator.

Never use an electric heater to defrost.

● Keep the door open during defrosting. Clean and dry the freezer with a cloth or a sponge.



Cleaning

● Unplug the appliance before cleaning.

● To clean the inner compartment, remove food and shelves. Wash the inner compartment with lukewarm water and neutral detergent. Do not use cleansers such as soaps, scouring powder or spray cleaners, boiled water or acid, etc.

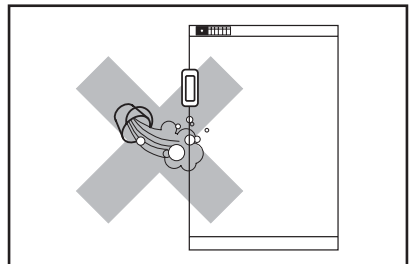
● Clean the outside of the refrigerator with a damp cloth. Dry thoroughly.

☆ For electric safety, do not splash water directly on the refrigerator.

☆ Make sure that water doesn't get into electric components as temperature regulator or illuminating light.

● Keep the door seal clean.

● For efficient operation, dirt and dust should be removed from back and bottom of the appliance.



Defrosting/Cleaning

At power failure

Even in summer, power failure that lasts for several hours doesn't affect the frozen food in the appliance. If a power failure is announced.

- Turn on the fast freeze system so as to make the foods as cold as possible.
- Do not place any fresh food in the freezer at the power failure.
- Prepare more ice cubes and place them on the top refrigeration compartment.

Note:

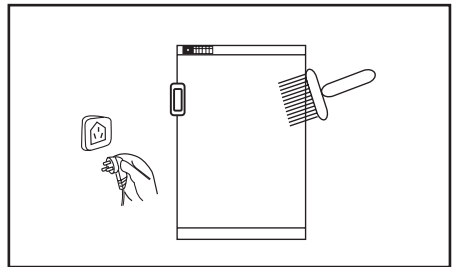
A continued power failure will have adverse effect on the storage period and the food quality.

When not in use

- If the appliance will not be used for a period of time, turn the unit off and unplug. Clean the appliance as described above.
- Leave the door open to keep the appliance from unpleasant odor.

Note:

Do not stop the appliance frequently for the sake of its service life.



Transportation

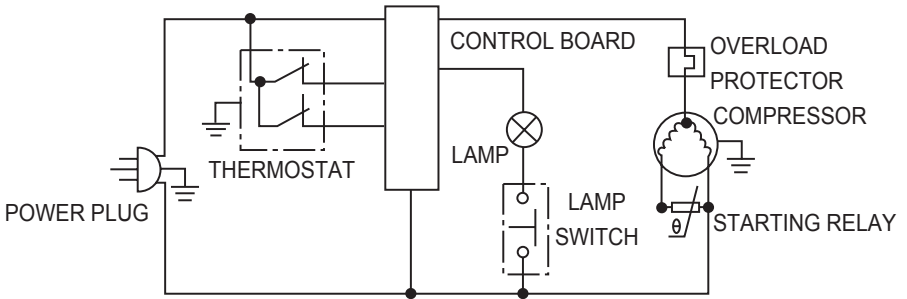
- Unplug the appliance before transportation.
- Take out foods from the appliance.
- Fix the drawers with adhesive tape.
- Keep the door closed during transportation with adhesive tape.

Troubleshooting

Before calling the service center, check the following points and see if you can solve the problem yourself.

Problem	Possible Cause
The freeze doesn't work	<ul style="list-style-type: none">● Not plugged in.● Voltage is too low.● The power switch is off.
The illuminating light doesn't work	<ul style="list-style-type: none">● The light bulb is broken.● The door switch is at position '0'.
Unusual noise	<ul style="list-style-type: none">● The appliance doesn't stand level.● The appliance is placed so near the wall that some part of it rubs against the wall.
The inner compartment isn't cold enough.	<ul style="list-style-type: none">● Large amounts of foods are stored in the appliance.● Wrong temperature display.● Initial start-up.● The door is opened frequently.● The temperature regulator is not properly set.● The appliance is exposed to direct sunlight or a heating vent.● Poor ventilation. The ventilating grille is blocked or the condenser needs to be cleaned.
The red indicator lights.	<ul style="list-style-type: none">● Check as described in the section 'Red warning indicator'.

HF-240T WIRING DIAGRAM



Troubleshooting

MODEL	HF-240T
12Month's Guarantee	YES
Capacity	230Ltr.
Voltage	220-240v, 50Hz
Total Input Power	120W
Energy Consumption	1.7 kw-h / 24h
Refrigerant	R134a 140g
Size (WxDxH in mm)	600x600x1467
Net Weight	69kg
Automatic Interior Light	YES
Lock	NO
Adjustable Feet	YES
Adjustable thermostat	YES
Drain Facility	YES
<p>Note: All capacities are gross. Haier THERMOCOOL reserves the right to change specifications as part of its policy of continuous improvement.</p>	



Haier THERMOCOOL produce high quality refrigerators which are strong, reliable, elegantly styled-yet practical and long lasting for the most demanding tropical climate and conditions.

Haier THERMOCOOL new generation refrigerators are convenient to use, highly efficient, energy saving and are built for quiet running to withstand voltage fluctuations.

Unique **Haier THERMOCOOL** 12 MONTH GUARANTEE gives you peace of mind and assured satisfaction from the moment of purchase. The 12 MONTH GUARANTEE covers:

- Free part replacement under warranty
- Free repair under warranty

Unique **Haier THERMOCOOL** NATIONWIDE SALES and SERVICE NETWORK offers you fast, reliable service and replacement spare parts which will normally be available for many years. Sales & Service is available in ILUPEJU, IBADAN, BENIN, WARRI, PORT HARCOURT, ABA, ENUGU, ONITSHA, KADUNA, ZARIA, KANO, JOS, MAIDUGURI, MINNA, ABUJA. Contact HPZ or your local **Haier THERMOCOOL** distributor for information.

...part of your life

Haier THERMOCOOL reserves the right to amend specifications without notice as part of its continuous improvement programme. **Haier THERMOCOOL** is a registered trademark.



45/57, Town Planning Way, Ilupeju Industrial Estate,
P.M.B 21132, Ikeja, Lagos, Nigeria. Tel: 01-4973474, 01-5554768,
01-5553288-90, Fax: 01-5553289, 01-4962076, E-mail: sales@hpz.com.ng
www.htcool.com

VC532007



0060509930

Free Manuals Download Website

<http://myh66.com>

<http://usermanuals.us>

<http://www.somanuals.com>

<http://www.4manuals.cc>

<http://www.manual-lib.com>

<http://www.404manual.com>

<http://www.luxmanual.com>

<http://aubethermostatmanual.com>

Golf course search by state

<http://golfingnear.com>

Email search by domain

<http://emailbydomain.com>

Auto manuals search

<http://auto.somanuals.com>

TV manuals search

<http://tv.somanuals.com>