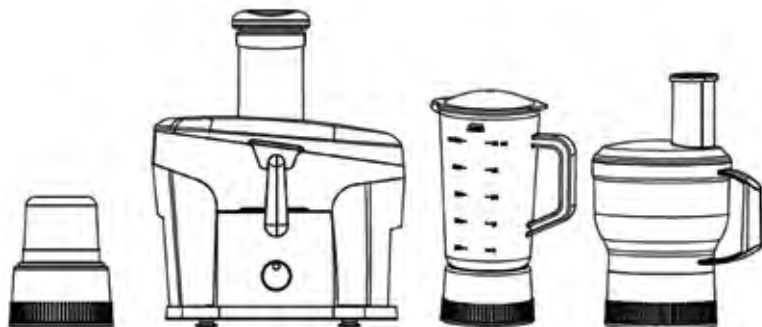


Haier

MULTIFUNCTION JUICE EXTRACTOR INSTRUCTION MANUAL



HJE-1024 HJE-1024L

FOR HOUSEHOLD USE ONLY

Before operating this appliance, please read these instructions completely.

CONTENTS

Important Safeguards.....	1-2
Key Parts Name And Location.....	3-6
Juice Extracting.....	7
Blending	7
Food Processor.....	8
Dry Grinding	10

IMPORTANT SAFEGUARDS

Read this user manual carefully before you use the appliance and save it for future reference.

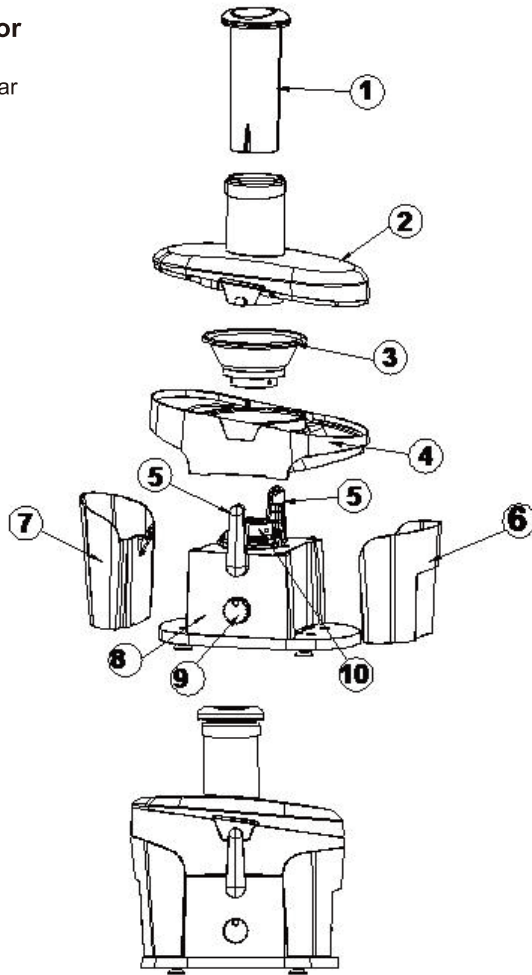
1. Check if the voltage indicated on the appliance corresponds to the local mains voltage before you connect the appliance.
2. Never connect this appliance to a timer switch in order to avoid a hazardous situation.
3. Do not use the appliance if the mains cord, the plug or other parts are damaged.
4. If the mains cord is damaged, you must have it replaced by Haier, a service centre authorised by Haier or similarly qualified persons in order to avoid a hazard.
5. Keep the appliance out of the reach of children.
6. Do not allow children to use the appliance without supervision.
7. Never let the appliance run unattended.
8. Always switch off the appliance by turning the control knob to 0.
9. Switch off the appliance before you detach any accessory.
10. Unplug the appliance immediately after use.
11. Never immerse the motor unit in water or any other liquid, nor rinse it under the tap.
12. Never use your fingers or an object (e.g. a spatula) to push ingredients down the feed tube while the appliance is running. Only use the pusher for this purpose.
13. Be very careful when you handle the blades or inserts. Be especially careful when you remove them from the bowl or jar, when you empty the bowl or jar and when you clean them. Their cutting edges are very sharp.

14. Always unplug the appliance before you reach into the blender jar with your fingers or an object (e.g. a spatula).
15. Wait until moving parts stop running before you remove the lid of the bowl or jar.
16. Never use any accessories or parts from other manufacturers or that Haier does not specifically recommend. If you use such accessories or parts, your guarantee becomes invalid.
17. Do not exceed the maximum content indicated on the bowl or the blender jar.
18. Thoroughly clean the parts that come into contact with food before you use the appliance for the first time.
19. This machine is unavailable for the weakness, unresponsive or psychopathic person (including children), unless under the direction or help from the person who have the responsibility for safety. Children should be overseen, so it can be testified that they are not playing with it.

KEY PARTS NAME AND LOCATION

Juice Extractor

- 1.Fruit pushing bar
- 2.Transparent lid
- 3.Rotating sieve
- 4.Middle Stand
- 5.Fastener
- 6.Pulp cup
- 7.Juice cup
- 8.Main unit
- 9.Switch
- 10.Drive Wheel

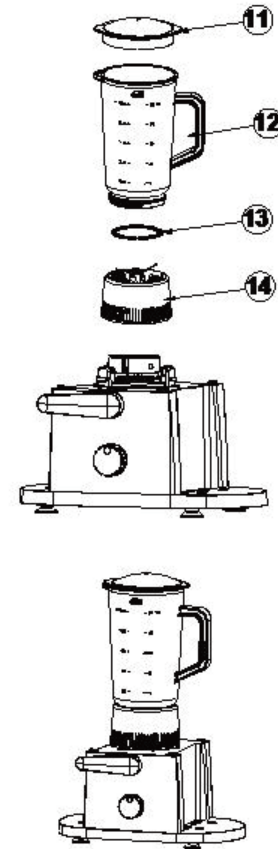


This picture is for reference only. Products may vary from the pictures.

KEY PARTS NAME AND LOCATION

Blender

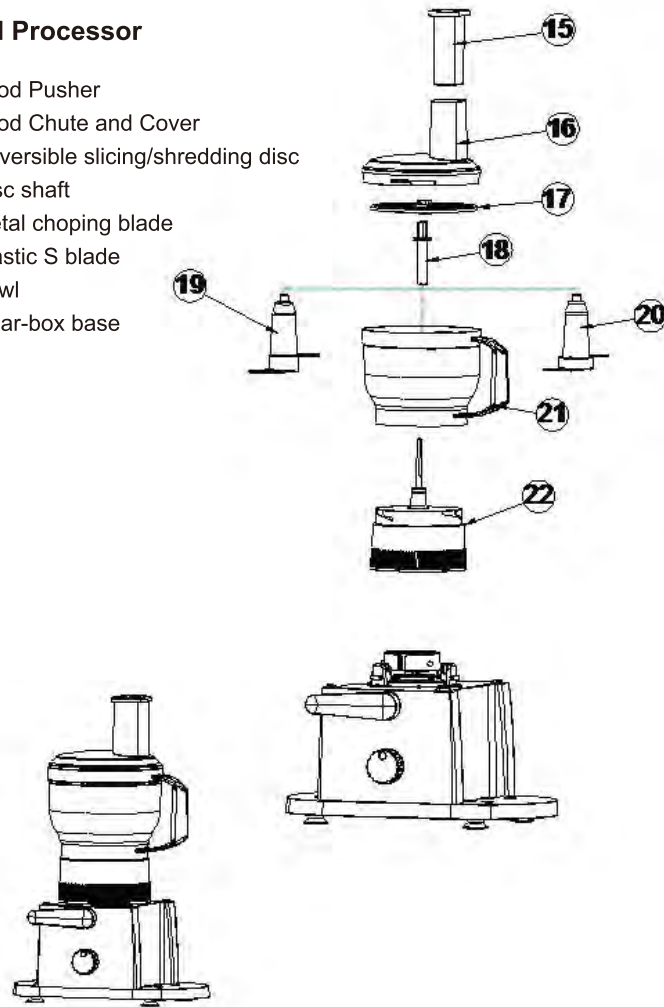
- 11.lid (blender)
- 12.Blender jar
- 13.Sealing ring
- 14.Blender knife set



This picture is for reference only. Products may vary from the pictures.

Food Processor

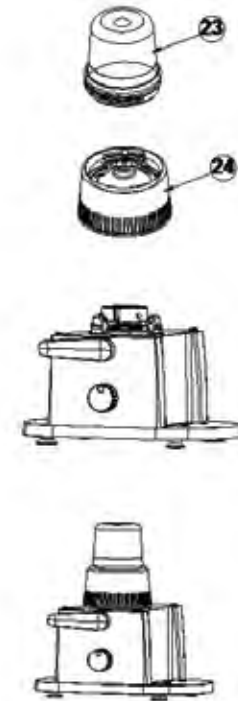
- 15. Food Pusher
- 16. Food Chute and Cover
- 17. Reversible slicing/shredding disc
- 18. Disc shaft
- 19. Metal chopping blade
- 20. Plastic S blade
- 21. Bowl
- 22. Gear-box base



This picture is for reference only. Products may vary from the pictures.

Dry Grinder

- 23. Grinding cup
- 24. Grinding knife stand



This picture is for reference only. Products may vary from the pictures.

JUICE EXTRACTING

1. Ensure the product is unplugged from the electrical outlet.
2. Place the middle stand(4) of the juice extractor onto main unit(8).
3. Position the rotating sieve(3) on the drive wheel(10) in such a way that it can turn freely.

⚠ WARNING: This rotating sieve has very sharp blade! Danger of injury

4. Replace the transparent lid(2) and fix the two fasteners(5) so that they lock in place in the housing.
5. Place Juice cup (7) and Pulp cup(6) in position.
6. Now cut the fruit from which juice is to be extracted into the appropriate size which can be put into feeding hole.
7. Switch on the unit and put the fruits into feeding hole. Slowly press down with pusher without using excessive force.

● Never run the juice extractor over 2 minutes in one operation. It is necessary for the juice extractor to be cooled to room temperature before next operation.

IMPORTANT: Always use fruit pushing bar to operate.

Speed

The machine has 0 , 1, 2 , P position, (0 is stop, 1 weak, 2 strong, P fingertip control). Select 1 when apply juicy fruits like watermelon. Select 2 for other fruits like Orange, Carrots and Vegetables.

BLENDING (optional)

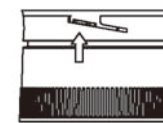
1. Ensure the product is unplugged from the electrical outlet.
2. Assemble blender jar(12) onto blender knife set(14) with sealing ring(13) inside blender knife set.

⚠ WARNING: Handle the blender knife set with care as they are extremely sharp.

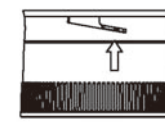
3. Wash ingredients well and cut into small pieces to fit into the Blending jar(12). Add water or beverage into the jug. Do not overload the jug at a time.
4. Cover Blender jar with lid (11)
5. Switch on and within a few minutes the work will be done. Repeat until the desired results are reached. NEVER RUN EMPTY. THIS MAY BURN THE MOTOR.
6. The P switch offers you fingertip control over short food processing jobs. When use P, the machine will run at high speed. Switch to 0 to stop the machine.
7. Do not continuously run the blender for more than 2 minutes. If you use the blender for a long time, you must run On 2 minutes and then rest it 1 minute

FOOD PROCESSOR (optional)

1. Ensure the product is unplugged from the electrical outlet before assembly.
2. Place the Main unit(8) on a flat and stable surface.
3. Insert the Bowl (21) over the Gear Box Base Metal shaft (22) and fasten it to the main unit by turning the Bowl anti-clockwise until the safety latched of the Bowl lock to the main unit (Preventing the Bowl from being lifted up).



Unlocked Safety Latch



lock Safety Latch

4. Assemble the desired attachments:
 - If using the Metal Chopping Blade or Plastic S-Blade:
 - a. Attach the selected S-Blade (19 or 20) by holding the plastic shaft end (end opposite of the S-Blade) and inserting the S-Blade shaft over the center column of the Bowl until securely fitted.

b. attach the food chute and cover(16) securely after inserting the food or liquid(not more than 1/2 the bowl shaft) into the Bowl.

●If using the Reversible Slicer/Shredder Disc:

a.Insert the Disc Shaft (18)inside of the Bowl shaft and onto the Gear Box Base shaft.

b.Carefully place (avoiding the blades) the Reversible Slicer/Shredder Disc(17) onto the Disc Shaft(18) with the desired side facing upwards.

c.Attach the Cover(16) securely to the Bowl.

d.Ensure the Cover center pin inserts into the hole of the Disc Shaft.

e.Twist the Cover anti-clockwise until the safety latches of the Cover lock to the Bowl (preventing the Cover from being lifted up)

⚠ IMPORTANT: The Cover must securely lock into its position before the product will operate.

To Use

The machine has 0 , 1, 2 , P position, (0 is stop, 1 weak, 2 strong, P fingertip control). Select 1 when apply juicy fruits like watermelon. Select 2 for other fruits like Orange, Carrots and Vegetables.

⚠ CAUTION: To prevent product damage, do not process coconut, cheese, coffee beans or whole squares of chocolate.

⚠ CAUTION: Do not use Speed 2 for food processor operation.Only speed 1 will be used.

1.Cut the food into small pieces as needed.

2.If using the Metal Chopping Blade or Plastic S-Blade:

a.Place the food or liquid(not more than 1/2 the bowl shaft) into the Bowl.

b.Insert the Food Pusher into the Food Chute and cover(16)

c.Attach and secure the Cover (16) onto the Bowl.

d.Plug the product into electrical outlet.

3.If using the Slicer/Shredder:

a.Insert the food to be processed inside of the Food Chute.

b.Push down the food with the Food Pusher once the food processor is activated.

4.Switch to 1 position to begin processing the food. To momentarily process food, switch to P and release it when done.

⚠ Note:To avoid electrical shock or fire, do not operate continuously for 1 minute.

5.To stop the blade motion and food processing, switch to “0” position.

6. Wait until the Blades and Metal shaft have completely stopped and unplug the product from the electrical outlet before removing the Cover, attachments or and food contents from the Bowl.

⚠ WARNING: Handle the Metal Chopping Blade and slicer /Shredder Disc with care as they are extremely sharp. Use caution when attaching, detaching, cleaning,or storing the Metal Chopping Blade and Slice/Shredder Disc.

DRY GRINDING (optional)

Grinding cup is suitable for grinding dry food into powder.

1.Ensure the product is unplugged from the electrical outlet.

2.Put food into grinding cup every time not more than” Max” line, cover grinding knife stand(24) and close it tightly clockwise.

3.Fasten the grinder assembly to the main unit by turning anti-clockwise until it locks firmly and securely to the main unit

4.Turn on the switch and then grinding begins.

5.The P switch offers you fingertip control over short food processing jobs. When use P, the machine will run at high speed. Switch to 0 to stop the machine.

6.Never use the chopper for more than 30 seconds without interruption.

⚠ **Note:** If the machine is running idle, that is, the blade does not touch food, please turn down the machine and cut off power supply. Loose the food and then turn on the machine to continue grinding.

⚠ **WARNING:** Handle the knife on grinding knife stand with care as they are extremely sharp.

Maintenance and Cleaning

1. Please put the machine in the dry place to avoid electric machinery gets wet and moldy.
2. Do not wash main unit and power plug with water or other liquid. Only wipe them with damp cloth. Other parts can be washed with water like pusher, top cover, middle stand and cups.
3. Blades are very sharp. In order to avoid injury, when washing blades, please put them under water tap to wash. Do not wash them with hand.
4. Do not put any parts into high temperature sterilizer to sterilize or boiler to steam and boil for sterilization.

To Use

Specification: 220-240VAC, 50Hz, 500Watts

Warranty Information

The manufacturer provides warranty in accordance with the legislation of the customer's own country of residence, with a minimum of 1 year, starting from the date on which the appliance is sold to the end user.

The warranty only covers defects in material or workmanship.

The repairs under warranty may only be carried out by an authorized service centre. When making a claim under the warranty, the original bill of purchase (with purchase date) must be submitted.

The warranty will not apply in cases of:

- Abnormal wear and tear
- Incorrect use, e.g. overloading of the appliance, use of non-approved accessories
- Use of force, damage caused by external influences

Correct Disposal Of This Product

This marking indicates that this product should not be disposed with other household wastes throughout the EU. To prevent possible harm to the environment or human health from uncontrolled waste disposal, recycle it responsibly to promote the sustainable reuse of material resources. To return your used device, please use the return and collection systems or contact the retailer where the product was purchased. They can take this product for environmental safe recycling.



Free Manuals Download Website

<http://myh66.com>

<http://usermanuals.us>

<http://www.somanuals.com>

<http://www.4manuals.cc>

<http://www.manual-lib.com>

<http://www.404manual.com>

<http://www.luxmanual.com>

<http://aubethermostatmanual.com>

Golf course search by state

<http://golfingnear.com>

Email search by domain

<http://emailbydomain.com>

Auto manuals search

<http://auto.somanuals.com>

TV manuals search

<http://tv.somanuals.com>