

Rinsing

Rinse with water-filling

- Put the laundries into the wash tub. Select suitable wash speed according to the laundries.
- Adjust the water level
Set the water level with water level adjusting lever according to the laundries quantity. Then fill suitable water continuously.
- Rinse
Adjust the wash timer to 5-7 minutes to do rinsing.

(Repeat the midway spinning and rinsing with stored water for 2-3 times)

Rinse with stored water

- Put the laundries into the wash tub. Select suitable wash speed according to the laundries.
 - Fill water to preset water level.
 - Rinse
Adjust the wash timer to 2-3 minutes to do rinsing.
- When the laundries quantity is a few, please use "Standard" wash speed. If you use "Strong" wash speed, it may splash.

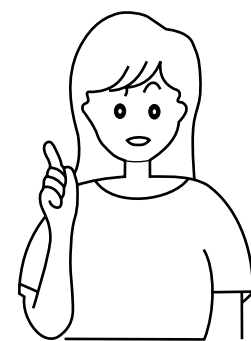
10

Spinning

- Put the laundries into the spin tub evenly and smoothly.
- Press the gland in the tub properly. Close the inner and outer cover of the spin tub.
- Spin
Select suitable spin time according to the laundries, and do spinning.

During spinning, if there's abnormal sound, it is generally owing to slanting placement of the laundries. Please stop the machine and re-order the laundries.

- In spinning, it will pause the work if you open the outer cover of the spin tub. Close it to resume the spinning.



To do spinning and draining or rinsing with water-filling together, please first do spinning for around 1 minute, then do draining or rinsing with water-filling. Otherwise the spinning will stop owing to too much water stored in the spin tub.

11

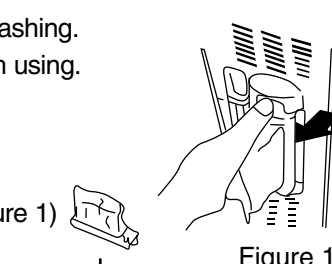
Disposal after washing

- After using, please clean the lint and foreign materials of the lint filter and over flow filter in time. Otherwise it may influence your using the machine.
- Please first pull off the power plug from the receptacle before cleaning.

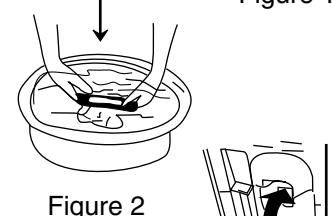
Cleaning the lint filter

- The lint filter must be used during washing.
- It must be cleaned in time after each using.

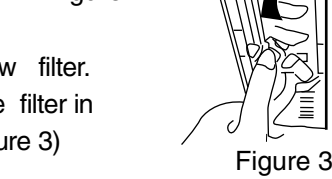
- Take off the lint filter
Put hand at the indicated position. Push down to take it off. (See to Figure 1)



- Clean the lint
Put it in water and clean while it is still wet. (See to Figure 2)

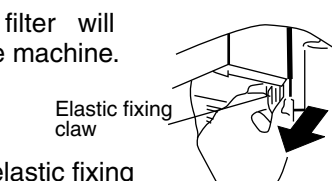


- Install the lint filter
After cleaning, insert the bottom of the lint filter (marked with "down side") into the overflow filter. then push the upper part of the filter in (marked with "up side"). (See to Figure 3)



Cleaning the overflow filter

- Too much lint on the overflow filter will influence the normal usage of the machine. Please clean it every two months.

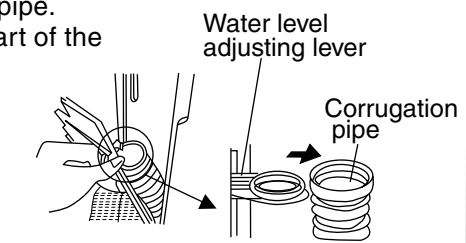


- Take off the overflow filter.
As indicated in the figure, nip the elastic fixing claw and pull it to the direction of the arrow to take it off.

12

Cleaning the overflow filter

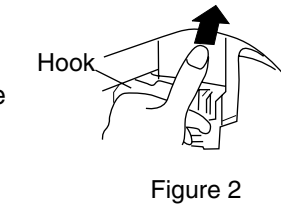
- Take off the corrugation pipe.
Dismantle the upper part of the corrugation pipe inside the overflow filter (as indicated in Figure 1)



- Cleaning the overflow filter.
Clean the lint around the filter and flush with tap water.

- Install the overflow filter.

- Install the corrugation pipe.
- Insert the mounting plate at the bottom of the filter into the valve cover.
- Hang up the book at the left upper side.
- Push the upper part in as indicated in Figure 2.



Disposal of the complete unit

- Wipe the complete unit with soft cloth twisted dry.
- Wipe with neutral detergent if too dirty.
- Do not wash it directly by water.
- After washing, dismantle the water inlet hose.
- Do not store water in the tub for long period. Discharge the water immediately after each using.
- Pull off the power plug and hang up the power cord.
- Hang up the drain hose. Wipe off the water drops on the surface and inside the tub with clean soft cloth.
- Open the cover of the wash tub and the inner/outer cover of the spin tub for some time (about one hour), then close them.



13

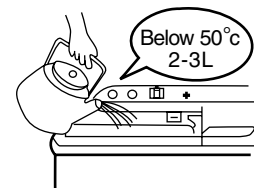
Trouble-shooting Answer to question

If the laundries fall to the outer side of the spin tub

If the laundries fall to the outer side of the spin tub, please take them out immediately.

When the remained water is frozen

- Prevent the freezing (be sure to discharge the water completely after using)
- After complete draining, set the "WASH SELECTOR" at "STRONG" or "STANDARD". If it is set at "DRAIN", it will be rather difficult for the frozen water to melt.



- When the water is frozen
Pour hot water below 50°C into the wash tub to soak it completely. Then turn the pulsator with hands gently. Please confirm the drainage can work normally before next using.

14

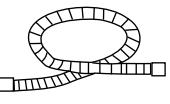
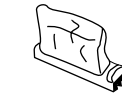

Trouble-shooting Answer to question

(If there's breakdown, please pull off the power plug before checking) The following phenomena are not breakdowns sometimes. Please confirm again before sending it to repair. If there are real breakdowns, Please come to the special maintenance department or after-sale service department of our company. Do not repair it by yourself.

Phenomena	The reason
The machine does not act.	<ul style="list-style-type: none"> Is there power failure? Is the power plug loose? Is the pulsator twisted by foreign materials?
The draining does not work.	<ul style="list-style-type: none"> Is the drain hose put down? Is the drain hose frozen? Is the drain hose blocked by foreign material? Are there laundries falling to the outer side of the spin tub?
There's abnormal sound during washing	<ul style="list-style-type: none"> Are there hair pin, coins or metal items brought inside the tub?
There's abnormal sound and violent vibration during spinning.	<ul style="list-style-type: none"> Is the machine slanting? Is the gland pressed evenly? Are there laundries falling to the outer side of the spin tub? Are the laundries in spin tub too much?
There may be some water flowing out of the drain hose in the first use of the machine.	<ul style="list-style-type: none"> It is the water remained in the factory inspection of performance.

15

Packing list

Name	Quantity
● User's manual	● One piece
● Warranty manual	● One piece
● Water inlet hose 	● One piece
● Lint filter 	● One piece
● Gland 	● One piece
● Twin-tub washing machine	● One set

Specification

Water level /Water quantity (L) (about)	Maximum/58 Medium/49 Minimum/43
Injection pressure (MPa)	0.02 ~ 0.2
Washing / Spinning capacity (kg)	7.2 / 6.0
Dimensions (mm)	L 786 W 455 H 945

16

Semi Automatic Washing Machine

User's manual

Haier

This manual is for

XPB72-0713S
XPB72-0714D
XPB72-0715S

- Please read this manual carefully before using.
- Retain it for future reference.

Haier

Customer Name _____ Address _____
Serial No. _____ Date of purchase _____ Model No. _____
Dealer Seal _____

HAIER WARRANTY

HAIER APPLIANCES (INDIA) PVT. LTD. (hereinafter referred to as "the Company") hereby offers the following warranty to the original domestic purchaser commencing from the date of the purchase. The Company, at its sole discretion, will free of charge repair or replace any defective part or parts which prove to be defective in workmanship and/or materials and not due to abnormal or improper usage.

CONDITIONS OF WARRANTY

- This warranty will automatically terminate on the expiry of the warranty period from the date of delivery.
- The Company is not liable for any delay in servicing due to reasons beyond the control of the Company or any of its authorised service centres.
- Parts replaced or repaired under this warranty are warranted throughout the remaining of the original warranty period.
- It is entirely left to the Company's discretion to repair/replace parts at the site of installation or at the authorised service centre of the Company.
- This warranty shall be strictly limited to the repairs or replacement of defective parts specified in the warranty. This warranty shall not cover any consequential or resulting liability.
- This warranty shall not, in any case, extend towards payment of any monetary consideration whatsoever or replacement or return of the product.
- The Company may repair/supply parts free of cost during the warranty period. This warranty does not cover any Excise duty, Central or Sales tax, Octroi and other local taxes or levies on the components/parts.
- The parts shall be replaced by functionally operating equivalent material only and not with brand new ones and are likely to be different from the one originally fitted. The parts thus removed shall be taken back by the company.
- The Company reserves the right to retain any part or component replaced at its sole discretion during the warranty period.
- In no event the Company or its authorised service centre be liable for any consequential damages or resulting liability, damage or loss arising directly or indirectly out of any defect in the product.
- This warranty is not valid in case of the following events:
 - If the product has been installed/serviced/repaired/opened or tampered by any unauthorised personnel.
 - If defects arise/caused by accidents, alteration, misuse, neglect, substitution of original components with spurious/non-genuine components, attacked by household pesticides, fire flood, earthquake, lightning and/or any other act of God/natural calamities.
 - The product is shifted outside India.
- For any service under this warranty beyond city/town/municipal limits from the Company/authorised service centre, a fixed charge of Rs. 50 will be collected from the customer in addition to the actual to and fro charges by the shortest route.
- Any change of location or change in the ownership during the warranty period must be intimated in writing to the Company.
- The Company's employees or its authorised representatives have no authority to vary the terms of this warranty.
- This warranty is effected in New Delhi and claims, if any, shall be made only before the courts having jurisdiction in New Delhi and no claim shall be made against the Company outside New Delhi notwithstanding that the Appliance may have been sold or delivered elsewhere.

HAIER APPLIANCES (INDIA) PVT. LTD., B-1/A-14, Mohan Co-operative Industrial Estate, New Delhi-44
Ph: 30674000/5000 Fax: 011-26971562

Haier
Inspired Living

Customer Name _____ Address _____
Serial No. _____ Date of purchase _____ Model No. _____
Dealer Seal _____

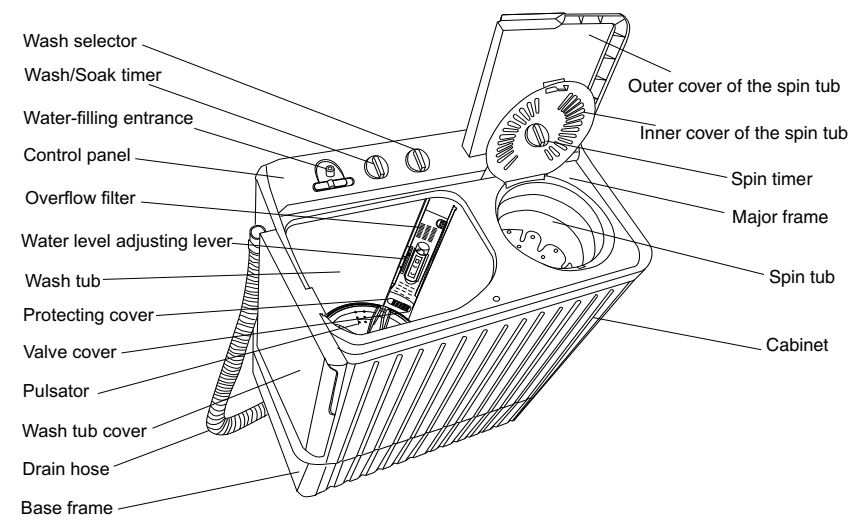
Haier Appliances (India) P. Limited

B-1/ A-14, Mohan Co-operative Industrial Estate, Mathura Road, New Delhi-110044.
Tel: 011-30674000/5000. Fax: 011-26971562. Email: info@haierindia.com Website: www.haierindia.com

Contents

- Names of the parts 1
- Safety precautions 2
- Installation and adjustment 4
- Preparation before washing 6
- The musts in washing 7
- Usage of the detergent 7
- Washing sequence 8
- Disposal after washing 12
- Trouble-Shooting * Answer to question 14
- Packing list *Specification 16

Names of the parts



Notes: All illustrations in this manual are given for reference only. Your products and accessories may show differences from these illustrations due to our continuous improvement.

Meaning and description of the symbols

	Contents marked with that symbol are related to the safety of the product and the personal safety of the users. Please operate in strict conformity to the contents, otherwise it may cause damage of the machine or injure the personal safety of the user.
	Contents marked with that symbol are actions forbidden to perform. Performing of those actions may result in damage of the machine or injure the personal safety of the user.

- Please check if the power receptacle has good earthing condition before using to guarantee your safety.

1

Safety precautions

Please insert the power cord into special receptacle with rated voltage. Be sure to use single-phase three pins receptacle. The earthing terminal of the receptacle must be earthed reliably. If possible, please adopt electric leakage protector.

If the power cord is bad, to avoid risk it is required to replace it by the technicians of our special shop or the after-sale service department. Keep the pin of the power plug clean.

Do not put the machine at damp place like the bathroom. Never wash it with water. Do not place wet laundries on the control panel.

In case the washing machine is installed on ground with carpet, do not block the ventilation hole with carpet.

Do not let the machine share one receptacle with other electric appliances. If the power plug is damaged, or the plugging into the receptacle is loose, do not use the plug any more.

When the machine is being used normally, please put the power plug at the location easily to be inserted and extracted by hand. Be sure to pull the plug off when there's power failure, or the machine is being moved, cleaned of when it is idle.

Do not use water hotter than 50 °C.

Do not wash water-pfroof laundries like the raincoat, bike covers etc. to avoid abnormal vibrations in spinning.

Do not let the machine share one receptacle with other electric appliances. If the power plug is damaged, or the plugging into the receptacle is loose, do not use the plug any more.

2

Safety precautions

Do not stretch hands into the working machine. It is dangerous even if the rotation is slow. Take special care of the children.

Do not put any hot or heavy items (such as the kettle with hot water) on the washing machine.

Handicapped or children without care shall not use the machine.

- Please put down the drain hose before washing, and connect the water inlet pipe properly.
- It is suggested to use foamless washing powder.
- Please don't use the washer in the environment below 0°C. If the washer is below 0°C, the washer's water inlet system and draining system will be frozen, then result in the damaged of the whole machine. If the washer has below 0°C, please be sure to ensure the washer is placed under the room temperature for 2-4 hours and then use.
- To protect your laundry and washing machine, please take out all coins, buttons, sand, hairpins and other foreign materials from the clothes before washing.

3

Installation and adjustment

Please install and adjust the machine according to the requirement of the manual. It is very important to your security and correct operating the machine.

Install the lint filter

After opening the package, please take out the lint filter from the document bag, install it to the overflow filter of the wash tub. See to the figure.

Usage of the drain hose

The drainage shall be smooth with the drain hose.

1. The height of the drain hose shall be less than 10cm, or the drainage will not be smooth enough and cause incomplete drainage.

2. Do not tramp or press the drain hose.

3. If the drain hose is too long, cut it at mid point. To make smooth drainage, cut the front end of the hose slantingly.

4. If extra drain hose is needed, please make separate purchase. The inner diameter of the extra hose shall not be less than 30mm, and the length shall not exceed 1.5m.

If the extra hose is too long, cut it either at point A or B.

4

How to change the direction of the drain hoses

• Figure 1 indicates the ex factory installation position of the drain hose.

Extend the drain hose from the side of spin tub

• Take off the drain hose from the hanging hole of the cabinet. Pull the drain hose fixing hook outwards gently to take out the drain hose from the two fixing hooks. (As per figure 2)

• Rotate the drain hose fixing hook for 90° to take it out from the installation hole (As per Figure 3).

• Install the two drain hose fixing hooks taken out into the installation hole at the other side of the base frame (to aim at the installation hole accurately you can lean the washing machine forward slightly). Then rotate for 90° (As per Figure 4).

• Pull the fixing hook outwards slightly. Inlay the drain hose into the fixing hooks reliably along the groove at spin tub side, and make it extend towards spin tub side.

• Then hang the drain hose into the hanging hole at the spin tub side. (As per Figure 5).

Extend the drain hose from the rear side

• Take out the drain hose from the fixing hook. Extend it from the rear side (When the drain hose is extended from the rear side, it can be hung on the point for drain hose at the two sides of the cabinet.) (See to Figure 6).

Install the water inlet hose; Select the water level

• Insert the water inlet hose into the water-filling entrance on the control panel directly (pull it out to dismantle it)

Select water level according to the quantity of the laundries.

• Set the water level adjusting lever to needed line.

5

Preparation before washing



Preparation before washing:

1. Connect the water inlet hose.
2. Confirm that the washing machine is earthed reliably. Then insert the power plug into the receptacle. Do not connect the earth terminal to the gas pipe and tap water pipe.
3. Put down the drain hose.
4. Slanting or uneven ground may result in unstable working or abnormal noise. Please make the machine stand horizontally.

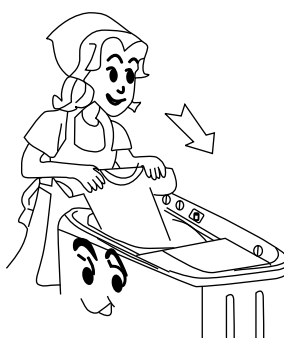
Pay attention to followings before washing the laundries

Check if the laundries has any special requirement for washing. (fabric should be marked machine wash)	Clear the pocket. Take out the coins, sand, hairpins etc.	Tie the long strips; fasten the buttons; close zippers.	The quantity of the laundries shall not be too large. Stretch and loosen the laundries before putting them in the tub.	When the pulsator is running, the buttons of the laundries may cause noise. For the sake of discretion, please wash the laundries with buttons separately (along with laundry washing bag).
--	---	---	--	---

- a. Check if the laundries are applicable for washing in machine.
- b. Divide the laundries that are not colorfast from other laundries.
- c. Soak those laundries which absorb water with difficulty, by hand.
- d. For those laundries with heavy soil, please first remove the dirt like mud or dust. For the parts with heavy soil, please apply detergent on them in advance, which can make it easier to remove the soil.
- e. For those laundries that may get lint ball and those with long fur, turn it over before putting in machine.
- f. Do not put the laundries polluted by chemicals into the washing machine directly.

6

The musts in washing



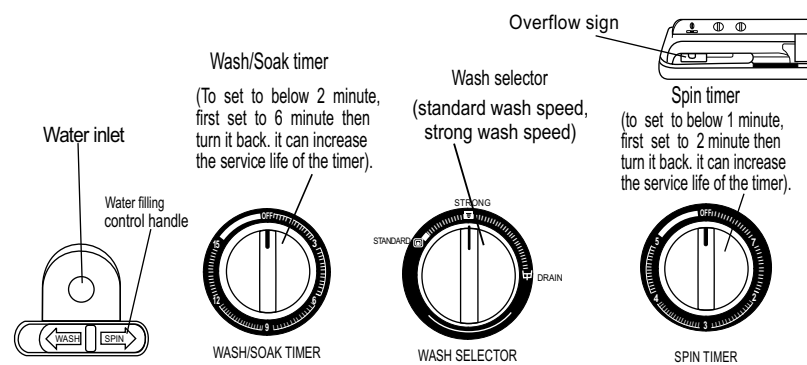
• The capacity of washing and spinning of the machine refer to the largest weight of the standard laundries under dry condition that can be washed or spinned in one time. Laundries quantity in one washing cycle shall be lower than the rated capacity.

• The thickness, size, type of the cloth will influence the actual washing capacity. It is suitable to put in reasonable amount of laundries and the laundries can be turned round in washing for one time washing.

• Do not select "Maximum" water level for laundries less than 1.0kg, so as to avoid splashing of water.

7

Washing sequence



Wash

1. Water fill selection
 - (a) Set fill selection to 'Wash side'. (Figure 1)
 - (b) Adjust water level rod to a position as needed.

2. Fill water and add dissolved powder detergent until water reaches a suitable level. (Figure 2) Begin to wash to dispense detergent uniformly.

3. Put in the wash load, and supplement water as necessary.

4. Wash selector knob
 - Select the washing speed according to the laundries. (Figure 3)

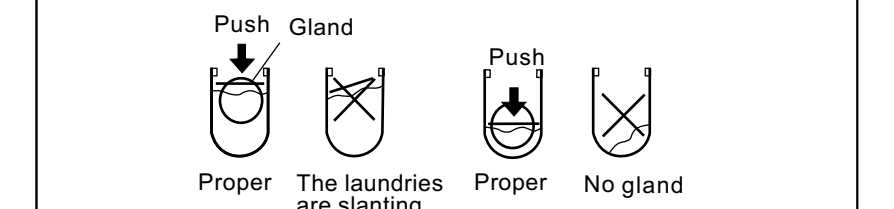
5. Select the washing time
 - Select the washing time according to the laundries. (Figure 4)

6. After washing, the buzzer will ring. Set the "WASH SELECTOR" at "DRAIN". (Figure 5)

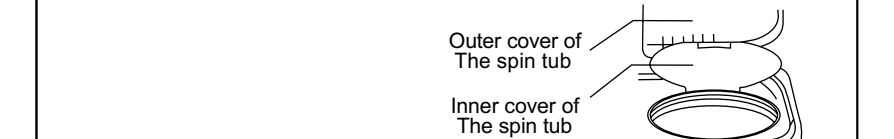
8

Midway spinning

1. Put the laundries into the spin tub evenly and smoothly.
2. Spin
 - (a) Put the gland in properly. Please put in the gland properly even if the laundries quantity is small.



- (b) Close the inner and outer cover of the spin tub.



- (c) Spin for 1-2 minutes.

3. Run the foam-removing spinning.

- (a) Open the outer cover of the spin tub.
 - (b) Set the water-filling selector control rod at the "SPIN" side. Fill water for about 1 minute. If the water quantity filled is too large, the water may flow out from the wash tub side. Please twist the water tab to limit the water filling.
 - (c) Close the outer cover of the spin tub. Spin for 1-2 minutes.

9

Free Manuals Download Website

<http://myh66.com>

<http://usermanuals.us>

<http://www.somanuals.com>

<http://www.4manuals.cc>

<http://www.manual-lib.com>

<http://www.404manual.com>

<http://www.luxmanual.com>

<http://aubethermostatmanual.com>

Golf course search by state

<http://golfingnear.com>

Email search by domain

<http://emailbydomain.com>

Auto manuals search

<http://auto.somanuals.com>

TV manuals search

<http://tv.somanuals.com>