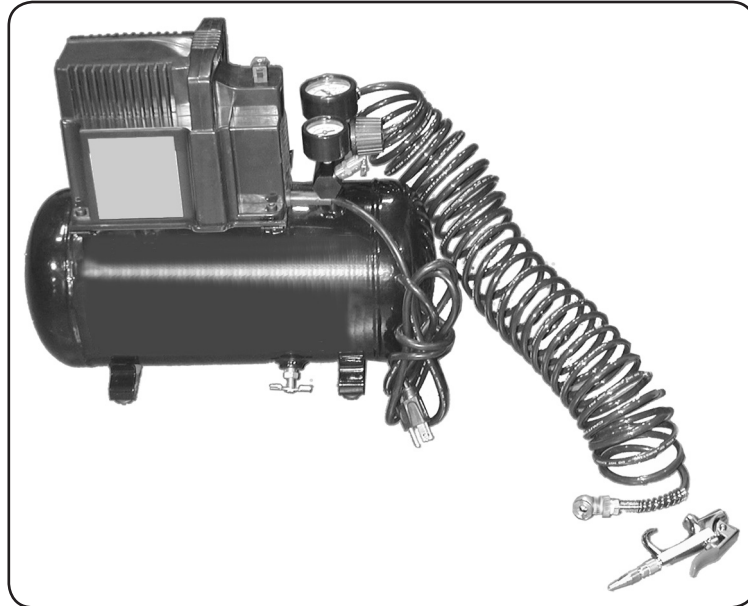


**CENTRAL PNEUMATIC®**

# 2 GALLON, 100 PSI OILLESS AIR COMPRESSOR

**Model 47407**

## ASSEMBLY AND OPERATION INSTRUCTIONS



Due to continuing improvements, actual product may differ slightly from the product described herein.



3491 Mission Oaks Blvd., Camarillo, CA 93011

Visit our website at: <http://www.harborfreight.com>

**TO PREVENT SERIOUS INJURY, READ AND UNDERSTAND  
ALL WARNINGS AND INSTRUCTIONS BEFORE USE.**

Copyright© 2002 by Harbor Freight Tools®. All rights reserved. No portion of this manual or any artwork contained herein may be reproduced in any shape or form without the express written consent of Harbor Freight Tools.

**For technical questions or replacement parts, please call 1-800-444-3353.**

Revised Cover Page 02/04; 11/04; 02/05; 01/07

## Specifications

Power Requirement	120 V~, 2.2 A
Tank Capacity	2 gallon, 0.3 SCFM @ 90 PSI; 0.58 SCFM @ 40 PSI
Pressure Switch	Cut-in at 73 PSI; shuts off automatically at 100 PSI (150 sec. on, 350 sec. off)
Piston Diameter	30 mm
Air Outlet	1/4 inch, 18 NPT
Pressure Tank Gauge	0 ~ 150 PSI x 1-3/4 inch diameter
Regulator Gauge	0 ~ 150 PSI x 2 inch diameter
Power Cord	78 inches; 3-prong plug
Air Hose	25 foot, coil with chuck
Features	Oil-less, direct drive, thermal overload protection; carrying handle; light weight and portable; Uses: airbrush, inflating tires and toys, nail gun
Accessories	Blow gun with tips, tire chuck
Weight	20 lb.



## Save This Manual

You will need the manual for the safety warnings and precautions, assembly instructions, operating and maintenance procedures, parts list and diagram. Keep your invoice with this manual. Write the invoice number on the inside of the front cover. Keep the manual and invoice in a safe and dry place for future reference.

## Safety Warnings and Precautions

**WARNING: When using tool, basic safety precautions should always be followed to reduce the risk of personal injury and damage to equipment.**

**Read all instructions before using this tool!**

1. **Keep work area clean.** Cluttered areas invite injuries.
2. **Observe work area conditions.** Do not use machines or power tools in damp or wet locations. Don't expose to rain. Keep work area well lighted. Do not use electrically powered tools in the presence of flammable gases or liquids.
3. **Keep children away.** Children must never be allowed in the work area. Do not let them handle machines, tools, or extension cords.
4. **Store idle equipment.** When not in use, tools must be stored in a dry location to inhibit rust. Always lock up tools and keep out of reach of children.
5. **Use the right tool for the job.** Do not attempt to force a small tool or attachment to do the work of a larger industrial tool. There are certain applications for which this tool was designed. It will do the job better and more safely at the rate for which it was intended. Do not modify this tool and do not use this tool for a purpose for which it was not intended.

REV 02/04; 11/04; 02/05; 07/06; 01/07

6. **Dress properly.** Do not wear loose clothing or jewelry as they can be caught in moving parts. Protective, electrically non-conductive clothes and non-skid footwear are recommended when working. Wear restrictive hair covering to contain long hair.
7. **Use eye and ear protection.** Always wear ANSI approved impact safety goggles. Wear an ANSI approved dust mask or respirator when working around metal, wood, and chemical dusts and mists.
8. **Do not overreach.** Keep proper footing and balance at all times. Do not reach over or across running machines.
9. **Maintain tools with care.** Keep tools sharp and clean for better and safer performance. Follow instructions for lubricating and changing accessories. Inspect tool cords periodically and, if damaged, have them repaired by an authorized technician. The handles must be kept clean, dry, and free from oil and grease at all times.
10. **Disconnect power.** Unplug tool when not in use.
11. **Remove adjusting keys and wrenches.** Check that keys and adjusting wrenches are removed from the tool or machine work surface before plugging it in.
12. **Avoid unintentional starting.** Be sure the switch is in the Off position when not in use and before plugging in. Do not carry any tool with your finger on the trigger, whether it is plugged in or not.
13. **Stay alert.** Watch what you are doing, use common sense. Do not operate any tool when you are tired.
14. **Check for damaged parts.** Before using any tool, any part that appears damaged should be carefully checked to determine that it will operate properly and perform its intended function. Check for alignment and binding of moving parts; any broken parts or mounting fixtures; and any other condition that may affect proper operation. Any part that is damaged should be properly repaired or replaced by a qualified technician. Do not use the tool if any switch does not turn On and Off properly.
15. **Guard against electric shock.** Prevent body contact with grounded surfaces such as pipes, radiators, ranges, and refrigerator enclosures.
16. **Replacement parts and accessories.** When servicing, use only identical replacement parts. Use of any other parts will void the warranty. Only use accessories intended for use with this tool. Approved accessories are available from Harbor Freight Tools.
17. **Do not operate tool if under the influence of alcohol or drugs.** Read warning labels on prescriptions to determine if your judgment or reflexes are impaired while taking drugs. If there is any doubt, do not operate the tool.
18. **Maintenance.** For your safety, service and maintenance should be performed regularly by a qualified technician.
19. **Use proper size and type extension cord.** If an extension cord is required, it must be of the proper size and type to supply the correct current to the tool without heating up. Otherwise, the extension cord could melt and catch fire, or cause electrical damage to the tool. This tool requires use of an extension cord of **0 to 10 amps**

capability (up to 50 feet), with wire size rated at **18 AWG**. Longer extension cords require larger size wire. If you are using the tool outdoors, use an extension cord rated for outdoor use (signified by “WA” on the jacket).

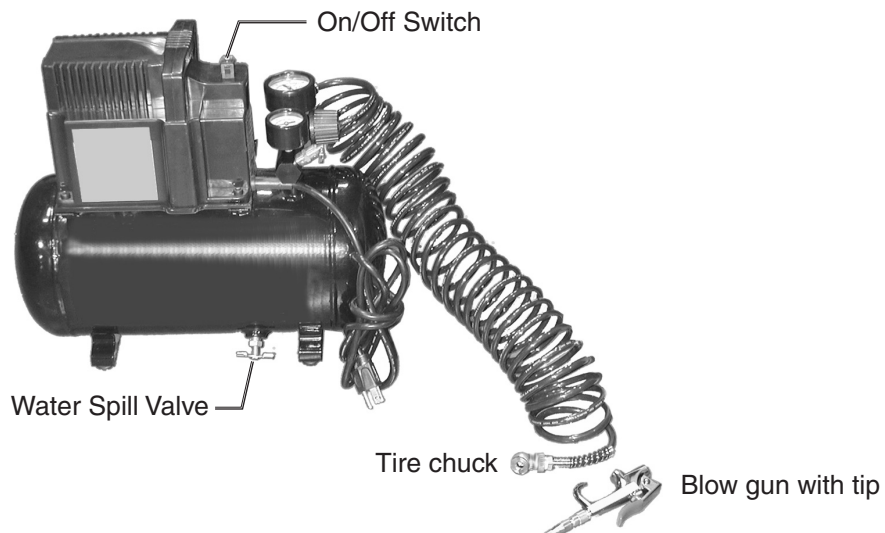
20. **Pacemaker safety warning.** People with pacemakers should consult with their physician(s) before using this product; operation of equipment in close proximity to a heart pacemaker could cause interference or failure of the pacemaker.
21. **Drain compressor every day.** Do not allow moisture to build up inside the compressor. Do not allow compressor to sit pressurized for longer than one hour.
22. **Make sure all equipment is rated to the appropriate capacity.** Adjust the output air pressure to the tool’s operating capacity.
23. **Avoid explosions and fire.** Never place flammable objects near the compressor. Never spray water or any flammable liquids towards the compressor.
24. **Avoid body injury.** Never direct the air outlet at persons or animals.
25. **WARNING:** The brass components of this product contain lead, a chemical known to the State of California to cause birth defects (or other reproductive harm). (California Health & Safety code § 25249.5, *et seq.*)

**Note:** Performance of this tool may vary depending on variations in local line voltage. Extension cord usage may also affect tool performance.

**Warning:** The warnings, cautions, and instructions discussed in this instruction manual cannot cover all possible conditions and situations that may occur. It must be understood by the operator that common sense and caution are factors which cannot be built into this product, but must be supplied by the operator.

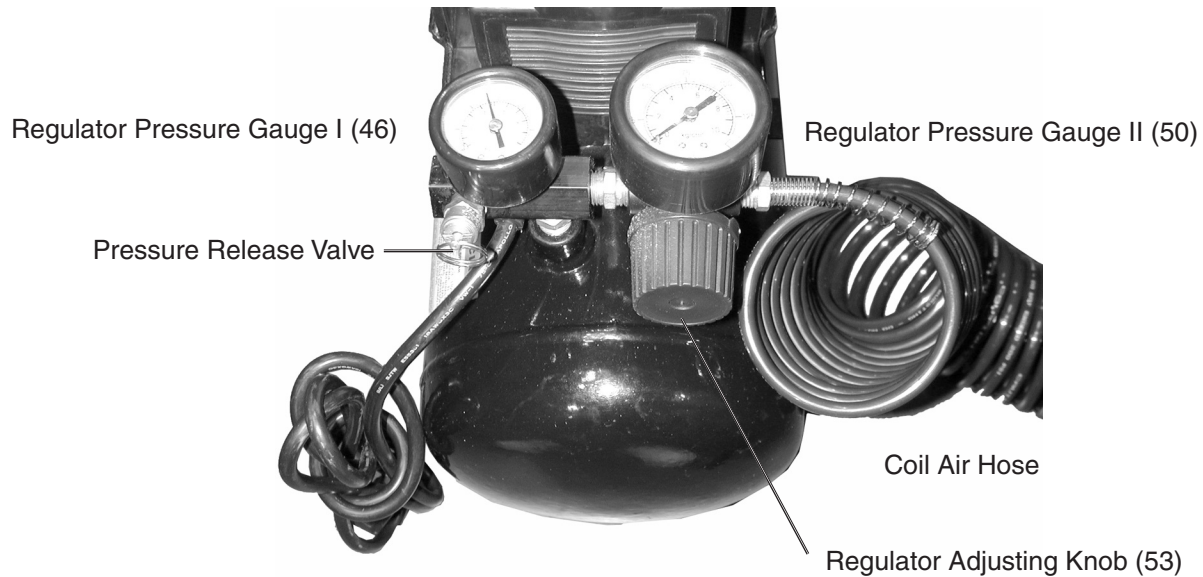
## Unpacking

When unpacking, check to make sure the following parts are included. If any parts are missing or broken, please call Harbor Freight Tools at the number on the cover of this manual as soon as possible.



## Assembly

1. Attach the Coil Air Hose to the Air Outlet as shown below.



2. Attach the Blow Gun (with desired tip), tire chuck, or other user supplied attachment to the other end of the Coil Air Hose.

## Operation

### Turning Compressor On

1. Plug the power cord into an electrical outlet with a grounding prong. **Note: Only use a 115V electrical source ( $\pm 10\%$  maximum variation.)**
2. Push the On/Off Switch to the ON position.
3. Allow the Tank to fill to 80 PSI before using.

With the Air Compressor turned on, operation is automatic and under the control of the internal pressure switch.

### Internal Pressure Switch

**Caution: Do not make changes to the internal pressure level switch; any change to the automatic On/Off pressure levels will cause additional stress on the motor which may result in shortened motor life. Doing so will void the warranty.**

### Using the Pressure Relief Valve

The Pressure Relief Valve is used when decompression is needed quickly and efficiently.

1. Press the On/Off Switch to the OFF position.
2. Pull on the Pressure Release Valve ring to release pressure.

**Caution: Wear safety glasses. The released air is under high pressure and can cause debris and dirt to fly as the air exits the tank.**

## Empty Air and Condensation

The water spill valve Petcock (11) is located underneath the Air Tank (shown in the photo on page 4). It must be used daily to release all trapped moisture from the tank. It will also get rid of any condensation that may cause tank corrosion.

**Warning: Do not open the Water Spill Valve so that more than four threads are showing.**

1. Push the On/Off Switch to turn the compressor off.
2. Unscrew the water spill valve Petcock (11) two to three turns only.
3. When all pressure is released, close the water spill valve again.

## Maintenance

1. Purge the Air Tank daily of all air and moisture to prevent corrosion.
2. Store the Air Compressor in a clean and dry location.
3. Check all air fittings for leaks before using.

### PLEASE READ THE FOLLOWING CAREFULLY

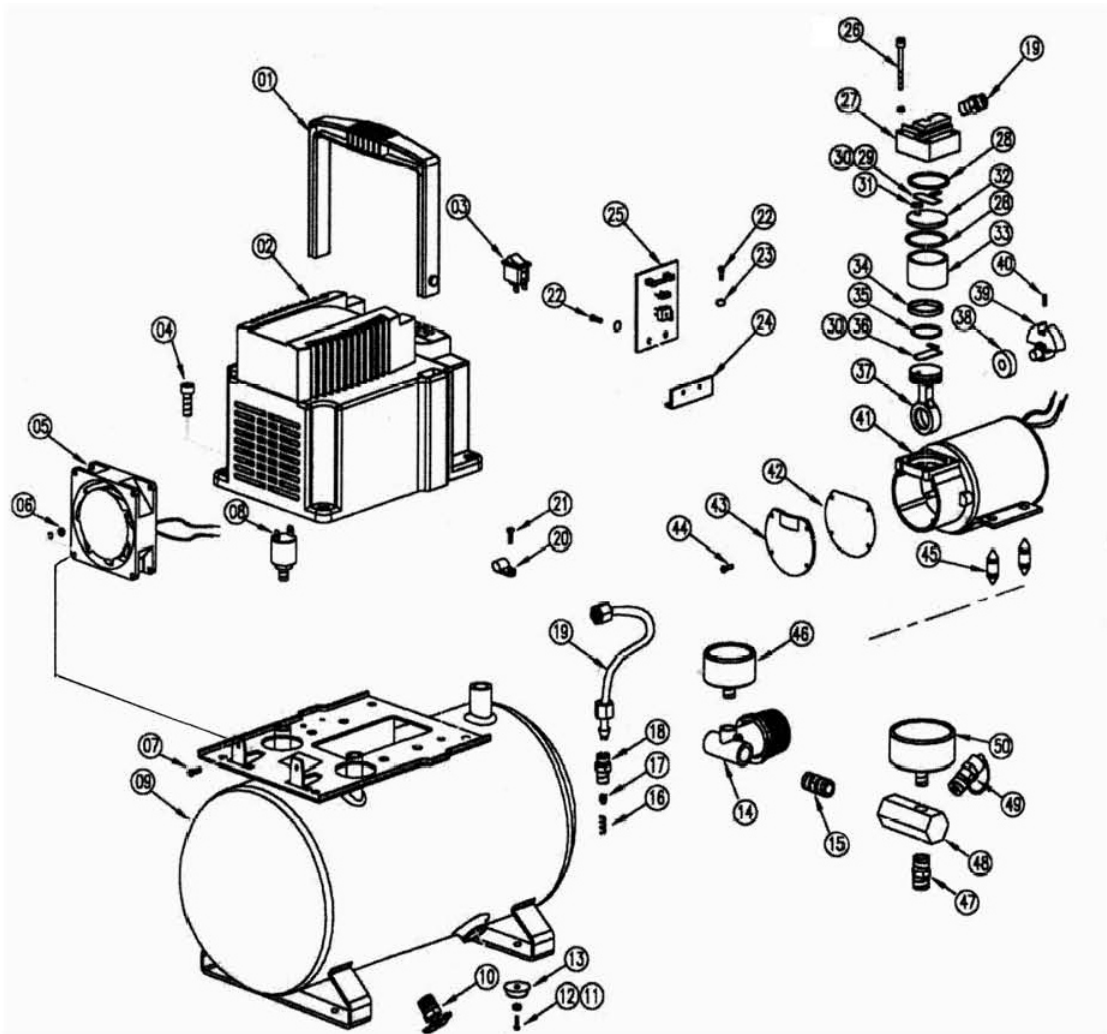
THE MANUFACTURER AND/OR DISTRIBUTOR HAS PROVIDED THE PARTS DIAGRAM IN THIS MANUAL AS A REFERENCE TOOL ONLY. NEITHER THE MANUFACTURER NOR DISTRIBUTOR MAKES ANY REPRESENTATION OR WARRANTY OF ANY KIND TO THE BUYER THAT HE OR SHE IS QUALIFIED TO MAKE ANY REPAIRS TO THE PRODUCT OR THAT HE OR SHE IS QUALIFIED TO REPLACE ANY PARTS OF THE PRODUCT. IN FACT, THE MANUFACTURER AND/OR DISTRIBUTOR EXPRESSLY STATES THAT ALL REPAIRS AND PARTS REPLACEMENTS SHOULD BE UNDERTAKEN BY CERTIFIED AND LICENSED TECHNICIANS AND NOT BY THE BUYER. THE BUYER ASSUMES ALL RISK AND LIABILITY ARISING OUT OF HIS OR HER REPAIRS TO THE ORIGINAL PRODUCT OR REPLACEMENT PARTS THERETO, OR ARISING

## Parts List

Part	Description	Part	Description	Part	Description
1	Handle	21	Screw, M4x10	41	Motor Drive
2	Shroud	22	Screw, M3x5	42	Gasket
3	Switch	23	Washer	43	Cover
4	Screw	24	Frame for Circle Board	44	Screw, Stun
5	Fan	25	Circle Board	45	Rubber Frame
6	Nut, M3	26	Screw	46	Regulator Pressure Gauge I
7	Screw, M3x10	27	Cylinder Heat	47	Connector II
8	Air Pressure Switch	28	O-Ring	48	Connector III
9	Base Plate & Tank	29	Spring Plate	49	Safety Valve
10	Drainage Valve	30	Plate	50	Regulator Pressure Gauge II
11	Screw, M4 x 14	31	O-Ring		
12	Washer, M4	32	Cylinder Gasket		
13	Washer, Rubber	33	Cylinder		
14	Valve Body	34	Piston		
15	Connector I	35	O-Ring		
16	Spring	36	Spring Plate		
17	Rubber Plug	37	Piston & Rod Assembly		
18	Outlet Connector	38	Bearing		
19	Tube Assembly	39	Crankshaft		
20	Nylon Clamp	40	Screw		

**NOTE:** Some parts are listed and shown for illustration purposes only and are not available individually as replacement parts.

# Assembly Drawing



## Warranty

**CENTRAL PNEUMATIC®**

## LIMITED 1 YEAR WARRANTY

Harbor Freight Tools Co. makes every effort to assure that its products meet high quality and durability standards, and warrants to the original purchaser that this product is free from defects in materials and workmanship for the period of one year from the date of purchase. This warranty does not apply to damage due directly or indirectly to misuse, abuse, negligence or accidents; repairs or alterations outside our facilities; or to lack of maintenance. We shall in no event be liable for death, injuries to persons or property, or for incidental, contingent, special or consequential damages arising from the use of our product. Some states do not allow the exclusion or limitation of incidental or consequential damages, so the above limitation of exclusion may not apply to you. THIS WARRANTY IS EXPRESSLY IN LIEU OF ALL OTHER WARRANTIES, EXPRESS OR IMPLIED, INCLUDING THE WARRANTIES OF MERCHANTABILITY AND FITNESS.

To take advantage of this warranty, the product or part must be returned to us with transportation charges prepaid. Proof of purchase date and an explanation of the complaint must accompany the merchandise. If our inspection verifies the defect, we will either repair or replace the product at our election or we may elect to refund the purchase price if we cannot readily and quickly provide you with a replacement. We will return repaired products at our expense, but if we determine there is no defect, or that the defect resulted from causes not within the scope of our warranty, then you must bear the cost of returning the product.

This warranty gives you specific legal rights and you may also have other rights which vary from state to state.

3491 Mission Oaks Blvd. • PO Box 6009 • Camarillo, CA 93011 • (800) 444-3353



## Free Manuals Download Website

<http://myh66.com>

<http://usermanuals.us>

<http://www.somanuals.com>

<http://www.4manuals.cc>

<http://www.manual-lib.com>

<http://www.404manual.com>

<http://www.luxmanual.com>

<http://aubethermostatmanual.com>

Golf course search by state

<http://golfingnear.com>

Email search by domain

<http://emailbydomain.com>

Auto manuals search

<http://auto.somanuals.com>

TV manuals search

<http://tv.somanuals.com>