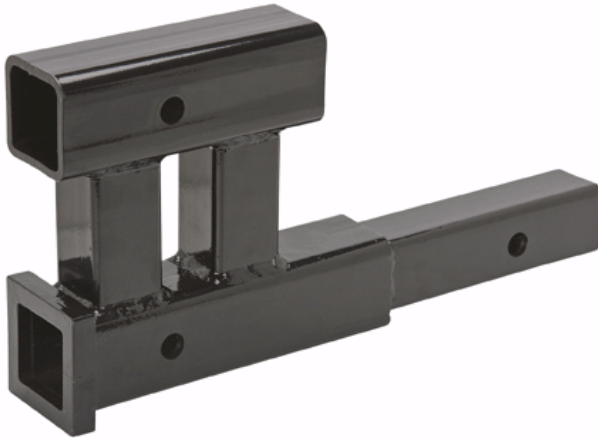




DUAL HITCH EXTENSION

Model 98239

SET UP AND OPERATING INSTRUCTIONS



Diagrams within this manual may not be drawn proportionally.

Due to continuing improvements, actual product may differ slightly from the product described herein.

Distributed exclusively by Harbor Freight Tools®.

3491 Mission Oaks Blvd., Camarillo, CA 93011

Visit our website at: <http://www.harborfreight.com>



Read this material before using this product.

Failure to do so can result in serious injury.

SAVE THIS MANUAL.

Copyright© 2008 by Harbor Freight Tools®. All rights reserved. No portion of this manual or any artwork contained herein may be reproduced in any shape or form without the express written consent of Harbor Freight Tools.

For technical questions or replacement parts, please call 1-800-444-3353.

SAVE THIS MANUAL

Keep this manual for the safety warnings and precautions, assembly, operating, inspection, maintenance and cleaning procedures. Write the product's serial number in the back of the manual near the assembly diagram (or month and year of purchase if product has no number). Keep this manual and the receipt in a safe and dry place for future reference.

IMPORTANT SAFETY INFORMATION

In this manual, on the labeling, and all other information provided with this product:



This is the safety alert symbol. It is used to alert you to potential personal injury hazards. Obey all safety messages that follow this symbol to avoid possible injury or death.



DANGER

DANGER indicates a hazardous situation which, if not avoided, will result in death or serious injury.



WARNING

WARNING indicates a hazardous situation which, if not avoided, could result in death or serious injury.



CAUTION

CAUTION, used with the safety alert symbol, indicates a hazardous situation which, if not avoided, could result in minor or moderate injury.

NOTICE

NOTICE is used to address practices not related to personal injury.

CAUTION

CAUTION, without the safety alert symbol, is used to address practices not related to personal injury.

GENERAL AND SPECIFIC SAFETY RULES



WARNING! Read all instructions. Failure to follow all instructions listed below may result in serious injury.

SAVE THESE INSTRUCTIONS

1. **WARNING:** To prevent serious injury and/or property damage:
 - a. **DO NOT USE AUXILIARY COLLAR-LESS RECEIVER FOR TOWING.**
 - b. Inspect before use; do not use if Dual Hitch Extension is bent, cracked, or damaged in any way.
 - c. Do not exceed 400 pound total tongue weight (for auxiliary and towing receivers combined), 4,000 pound gross trailer weight, or vehicle receiver capacity.
 - d. **Be aware of dynamic loading!** *Suddenly starting or jerking against load may briefly create excess load causing product failure.*
 - e. Wear ANSI-approved safety goggles and heavy-duty work gloves during installation, setup and removal of Dual Hitch Extension.
 - f. Install and use according to DOT regulations.
 - g. Read this manual before use.

2. Work area safety

- a. Keep work area clean and well lit. *Cluttered or dark areas invite accidents.*

- b. **Keep children and bystanders away while operating. *Distractions can cause accidents.***

3. Personal safety

- a. Stay alert, watch what you are doing and use common sense when operating. Do not use while you are tired or under the influence of drugs, alcohol or medication. *A moment of inattention may result in serious personal injury.*

- b. **Use safety equipment. Always wear eye protection. *Safety equipment such as dust mask, non-skid safety shoes, hard hat, or hearing protection used for appropriate conditions will reduce personal injuries.***

- c. Dress properly. Do not wear loose clothing or jewelry. Keep your hair, clothing and gloves away from moving parts. *Loose clothes, jewelry or long hair can be caught in moving parts.*

4. Product safety

- a. Maintain labels and nameplates on the tool. These carry important safety information. If unreadable or missing, contact Harbor Freight Tools for a replacement.
- b. This product is heavy, and is not a toy. Keep it out of reach of children.

The warnings, precautions, and instructions discussed in this instruction manual cannot cover all possible conditions and situations that may occur. It must be understood by the operator that common sense and caution are factors which cannot be built into this

product, but must be supplied by the operator.



SAVE THESE INSTRUCTIONS.

SPECIFICATIONS

Maximum Gross Towing Weight	4,000 lb.
Maximum Tongue Weight (For auxiliary and towing receivers combined)	400 lb.
Towing Receiver Specifications	2" Receiver, 2" x 6-1/2"
Auxiliary Receiver	2" x 7-1/2"

UNPACKING

When unpacking, check to make sure that the item is intact and undamaged. If damage is found, please call Harbor Freight Tools at the number shown on the cover of this manual as soon as possible.

INITIAL SET UP INSTRUCTIONS



Read the ENTIRE IMPORTANT SAFETY INFORMATION section at the beginning of this manual including all text under subheadings therein before set up or use of this product.

ASSEMBLY

There is no assembly required for this Dual Hitch Extension.

OPERATING INSTRUCTIONS

1. This Dual Hitch Extension allows you to tow a trailer, boat, or camper and still have a hitch receiver available for a bike rack or other auxiliary accessory that needs a hitch receiver.
2. Be sure vehicle is parked on a level, flat surface.
3. Slide the bottom half of the Dual Hitch Extension into the vehicle tow hitch receiver opening. Secure the Dual Hitch Extension using a safety pin (not included) and R-Clip (not included). See **Figure 1**.
4. Slide a ball hitch (not included) into the bottom square of the Dual Hitch Extension. Secure the ball hitch with a safety pin and R-Clip.
5. Slide the auxiliary accessory into the top square hole of the Dual Hitch Extension and secure with a safety pin and an R-Clip.
6. **NOTE: It is always recommended and safer to attach your auxiliary accessory to the Dual Hitch Extension after hooking up a trailer, boat, or camper. When finished, unhitch the auxiliary accessory before unhitching the Trailer, boat, or camper.**
7. **WARNING: When traveling, check all connections, hitches and loads often. Check for loose or missing safety pins, R-Clips, safety chains and in general all parts of towing apparatus you may be using.**
8. When you are finished using the Dual Hitch Extension, always remove it from the tow vehicle. Never leave it attached as it adds to the overall length of your vehicle and could cause an accident when backing, or

by tripping when walking behind your vehicle.

9. Wipe off the Dual Hitch Extension and store it inside, out of the reach of children.

USER-MAINTENANCE INSTRUCTIONS



Procedures not specifically explained in this manual must be performed only by a qualified technician.



TO PREVENT SERIOUS INJURY FROM FAILURE:
Do not use this Dual Hitch Extension if it is cracked, or damaged in any way.

Cleaning, Maintenance, and Lubrication

1. **BEFORE EACH USE**, inspect the general condition of this Dual Hitch Extension. Check for cracks or any condition that may affect its safe operation.
2. **AFTER USE**, wipe with clean cloth.

**PLEASE READ THE
FOLLOWING CAREFULLY**

THE MANUFACTURER AND/OR DISTRIBUTOR HAS PROVIDED THE PARTS LIST AND ASSEMBLY DIAGRAM IN THIS MANUAL AS A REFERENCE TOOL ONLY. NEITHER THE MANUFACTURER OR DISTRIBUTOR MAKES ANY REPRESENTATION OR WARRANTY OF ANY KIND TO THE BUYER THAT HE OR SHE IS QUALIFIED TO MAKE ANY REPAIRS TO THE PRODUCT, OR THAT HE OR SHE IS QUALIFIED TO REPLACE ANY PARTS OF THE PRODUCT. IN FACT, THE MANUFACTURER AND/OR DISTRIBUTOR EXPRESSLY STATES THAT ALL REPAIRS AND PARTS REPLACEMENTS SHOULD BE UNDERTAKEN BY CERTIFIED AND LICENSED TECHNICIANS, AND NOT BY THE BUYER. THE BUYER ASSUMES ALL RISK AND LIABILITY ARISING OUT OF HIS OR HER REPAIRS TO THE ORIGINAL PRODUCT OR REPLACEMENT PARTS THERETO, OR ARISING OUT OF HIS OR HER INSTALLATION OF REPLACEMENT PARTS THERETO.

Record Product's Serial Number Here:

Note: If product has no serial number, record month and year of purchase instead.

Note: Some parts are listed and shown for illustration purposes only, and are not available individually as replacement parts.

LIMITED 90 DAY WARRANTY

Harbor Freight Tools Co. makes every effort to assure that its products meet high quality and durability standards, and warrants to the original purchaser that this product is free from defects in materials and workmanship for the period of 90 days from the date of purchase. This warranty does not apply to damage due directly or indirectly, to misuse, abuse, negligence or accidents, repairs or alterations outside our facilities, criminal activity, improper installation, normal wear and tear, or to lack of maintenance. We shall in no event be liable for death, injuries to persons or property, or for incidental, contingent, special or consequential damages arising from the use of our product. Some states do not allow the exclusion or limitation of incidental or consequential damages, so the above limitation of exclusion may not apply to you. THIS WARRANTY IS EXPRESSLY IN LIEU OF ALL OTHER WARRANTIES, EXPRESS OR IMPLIED, INCLUDING THE WARRANTIES OF MERCHANTABILITY AND FITNESS. To take advantage of this warranty, the product or part must be returned to us with transportation charges prepaid. Proof of purchase date and an explanation of the complaint must accompany the merchandise. If our inspection verifies the defect, we will either repair or replace the product at our election or we may elect to refund the purchase price if we cannot readily and quickly provide you with a replacement. We will return repaired products at our expense, but if we determine there is no defect, or that the defect resulted from causes not within the scope of our warranty, then you must bear the cost of returning the product.

This warranty gives you specific legal rights and you may also have other rights which vary from state to state.

**3491 Mission Oaks Blvd. • PO Box 6009
• Camarillo, CA 93011 • (800) 444-3353**

Free Manuals Download Website

<http://myh66.com>

<http://usermanuals.us>

<http://www.somanuals.com>

<http://www.4manuals.cc>

<http://www.manual-lib.com>

<http://www.404manual.com>

<http://www.luxmanual.com>

<http://aubethermostatmanual.com>

Golf course search by state

<http://golfingnear.com>

Email search by domain

<http://emailbydomain.com>

Auto manuals search

<http://auto.somanuals.com>

TV manuals search

<http://tv.somanuals.com>