

CHICAGO
Electric® Power Tools

18 VOLT CORDLESS
CHAINSAW

Model 44493

ASSEMBLY AND OPERATING INSTRUCTIONS



Distributed Exclusively by Harbor Freight Tools®.

3491 Mission Oaks Blvd., Camarillo, CA 93011
Visit our Web site at <http://www.harborfreight.com>

Copyright © 2000 by Harbor Freight Tools®. All rights reserved. No portion of this manual or any artwork contained herein may be reproduced in any shape or form without the express written consent of Harbor Freight Tools.

For technical questions and replacement parts, please call 1-800-444-3353

Specifications

ITEM	DESCRIPTION
Cutting Length	4-1/2 inches
Chain Speed	520 FPM
Chain Type	25 AP
Chain Pitch	1/4 inch
Weight	5.5 lbs.
Overall Length	18-1/2 inches
Battery	18 VDC
Switches	Safety switch and trigger
Accessories	Battery Charger, 6 foot cord, U.L. Listed Oil Bottle Blade Cover

Save This Manual

You will need the manual for the safety warnings and precautions, assembly instructions, operating and maintenance procedures, parts list and diagram. Keep your invoice with this manual. Write the invoice number on the inside of the front cover. Keep the manual and invoice in a safe and dry place for future reference.

Safety Warnings and Precautions

WARNING: When using tool, basic safety precautions should always be followed to reduce the risk of personal injury and damage to equipment.

Read all instructions before using this tool!

1. **Keep work area clean.** Cluttered areas invite injuries.
2. **Observe work area conditions.** Do not use machines or power tools in damp or wet locations. Don't expose to rain. Keep work area well lighted. Do not use electrically powered tools in the presence of flammable gases or liquids.
3. **Keep children away.** Children must never be allowed in the work area. Do not let them handle machines, tools, or extension cords.
4. **Store idle equipment.** When not in use, tools must be stored in a dry location to inhibit rust. Always lock up tools and keep out of reach of children.
5. **Do not force tool.** It will do the job better and more safely at the rate for which it was intended. Do not use inappropriate attachments in an attempt to exceed the tool capacity.
6. **Use the right tool for the job.** Do not attempt to force a small tool or attachment to do the work of a larger industrial tool. There are certain applications for which this tool was designed. Do not modify this tool and do not use this tool for a purpose for which it was not intended.

7. **Dress properly.** Do not wear loose clothing or jewelry as they can be caught in moving parts. Protective, electrically non-conductive clothes and non-skid footwear are recommended when working. Wear restrictive hair covering to contain long hair.
8. **Use eye and ear protection.** Always wear ANSI-approved impact safety goggles. Wear a full face shield if you are producing metal filings or wood chips. Wear an ANSI approved dust mask or respirator when working around metal, wood, and chemical dusts and mists.
9. **Do not overreach.** Keep proper footing and balance at all times. Do not reach over or across running machines.
10. **Maintenance.** For your safety, service and maintenance should be performed regularly by a qualified technician.
11. **Disconnect power.** Remove Battery from tool when not in use.
12. **Remove adjusting keys and wrenches.** Check that keys and adjusting wrenches are removed from the tool before using.
13. **Avoid unintentional starting.** Be sure the switch is in the Off position when not in use. Do not carry any tool with your finger on the trigger.
14. **Stay alert.** Watch what you are doing, use common sense. Do not operate any tool when you are tired.
15. **Check for damaged parts.** Before using any tool, any part that appears damaged should be carefully checked to determine that it will operate properly and perform its intended function. Check for alignment and binding of moving parts; any broken parts or mounting fixtures; and any other condition that may affect proper operation. Any part that is damaged should be properly repaired or replaced by a qualified technician. Do not use the tool if any switch does not turn On and Off properly.
16. **Do not operate tool if under the influence of alcohol or drugs.** Read warning labels on prescriptions to determine if your judgment or reflexes are impaired while taking drugs. If there is any doubt, do not operate the tool.
17. **People with pacemakers should consult their physician(s) before use.** Electromagnetic fields in close proximity to heart pacemaker could cause pacemaker interference or pacemaker failure. In addition, people with pacemakers should:
18. **Some dust created by power sanding, sawing, grinding, drilling, and other construction activities, contains chemicals known [to the State of California] to cause cancer, birth defects or other reproductive harm.** Some examples of these chemicals are: Lead from lead-based paints Crystalline silica from bricks and cement or other masonry products Arsenic and chromium from chemically treated lumber Your risk from these exposures varies, depending on how often you do this type of work. To reduce your exposure to these chemicals: work in a well ventilated area, and work with approved safety equipment, such as those dust masks that are specially designed to filter out microscopic particles. (California Health & Safety Code § 25249.5, *et seq.*)

Unpacking

When unpacking, check to make sure the following parts are included.

Cordless Chainsaw, 18 Volt Battery Pack, Charger, Blade Cover, and Oil Bottle.

If any parts are missing or broken, please call Harbor Freight Tools at the number on the cover of this manual as soon as possible.

Battery Precautions

1. Read all instructions and warnings on the battery before charging the battery.
2. To avoid accidents, charge the supplied battery only. Do not use a different charger with this battery.
3. Do not expose the battery (or tool) to rain or wet conditions.
4. To avoid damage of cable and plug, never pull the cable to disconnect the charger.
5. Do not use the charger if the cable or plug are damaged.
6. Repairs should be carried out by qualified technicians only.
7. Do not touch the battery poles with any conductive source.
8. Do not store the battery in a box with other metal objects.
9. Do not throw the battery in a fire.

Operational Warnings

Warning: Improper use of this chainsaw can cause serious injury or death.

1. Avoid Kickback by not causing the wood to pinch the saw Chain (15).
2. Do not cut using the upper side of the saw Chain. Do not remove the tip guard located on the tip of the saw Chain. The Front Hand Guard must be in place at all times.
3. Firmly grip both handles of the chainsaw while cutting. Never cut with one hand!
4. Begin cutting only when motor is at full speed.
5. Do not overreach or cut above chest height.
6. Cut using the lower side of the saw chain, and always away from your body.
7. Always stop motor before carrying or setting down the chainsaw.
8. Keep bystanders away from the work area.
9. Be prepared for small branches to be caught in the chain path, stopping saw chain movement. Turn off power switch before clearing caught branches.
10. Have a steady footing before cutting. Never cut from atop a ladder.

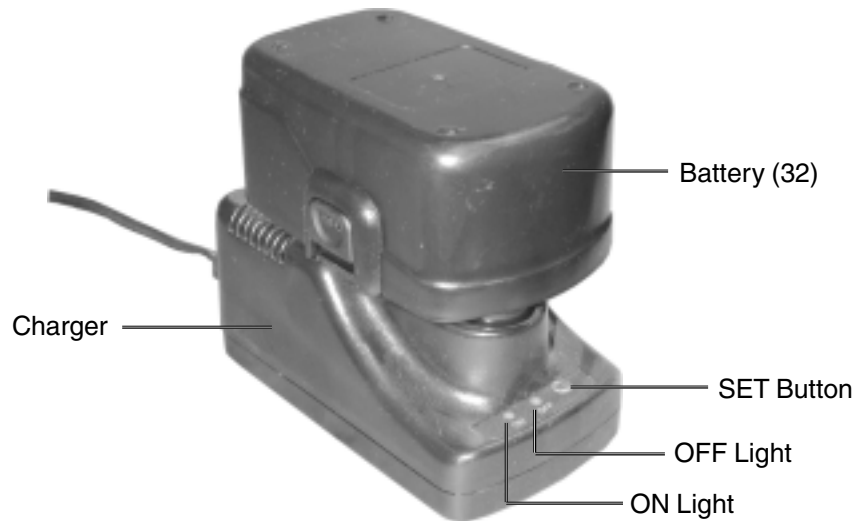
Warning: The warnings, cautions, and instructions discussed in this instruction manual cannot cover all possible conditions and situations that may occur. It must be understood by the operator that common sense and caution are factors which cannot be built into this product, but must be supplied by the operator.

Charging Battery

The Battery does not come charged from the factory. Charge for 5 to 6 hours before using.

1. Plug the Charger cord into an electrical outlet.
2. Insert the battery (32) into the Charger Base. The battery can only insert one way.

Warning: Never charge battery more than 12 hours continuously. Chargers should not be left plugged in, or charging for more than 12 hours.



4. Press the Set button to start the charging

The ON indicator light should come on. If it does not come on, check the power connection or try a different outlet.

5. Charge the Battery for 5 to 6 hours.

Subsequent full charges should take less time. When battery is completely charged, the Charger will automatically shut off. The ON Indicator light will turn off, and the OFF indicator will light.

6. After charging, unplug the Charger from the wall outlet.
7. Insert the Battery into the Chainsaw.

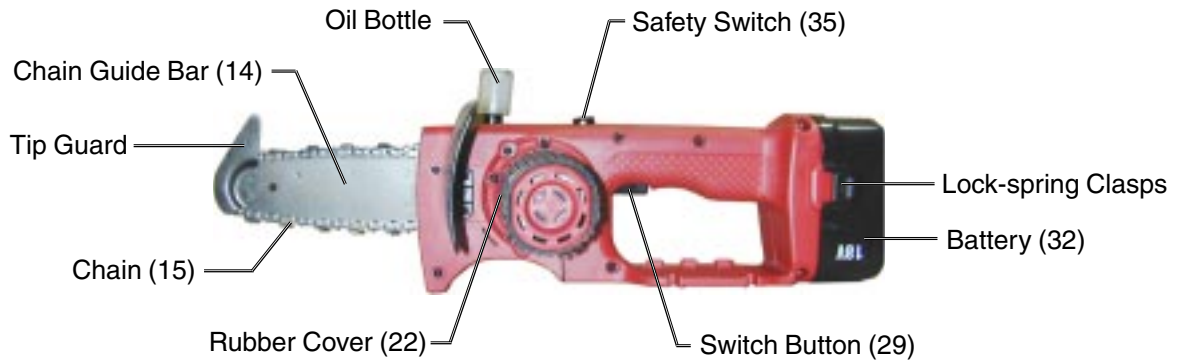
Note: the operation time of a new battery will ramp up as it is properly used and recharged.

Inserting Battery into Unit

1. Insert Battery (32) into the receptacle at the Chainsaw handle bottom. It can only fit in one way.
2. Secure the lock-spring clasps to each side of the handle.

Cutting Operation

1. Stand in front of the wood to be cut with your feet firmly in place.
2. Grasp the Rubber Cover (22) with your left hand.



3. With your right hand, press down on the Safety Switch (35), then press the Switch Button (29).

The Switch Button cannot be squeezed unless the Safety Switch is depressed. With the Chainsaw running, you can let go of the Safety Switch.

4. Begin cutting with a light downward pressure.

Allow the saw chain to cut at its own rate. Applying too much pressure can damage the Motor and Gear Assy (28), Chain (15), or Chain Guide Bar (14).

Warning: Kickback may occur when the nose or tip of the Chain Guide Bar touches an object, or when the wood closes in and pinches the saw Chain in the cut. Use extreme caution and have complete control of the Chainsaw using a firm grip with both hands.

5. To turn the Chainsaw off, release the Switch Button (29). Remove the Battery (32) when the Chainsaw is not in use.
6. After cleaning the Chainsaw, place the Chain Cover over the Chain.

Maintenance

Always remove the Battery first, before performing any maintenance on the Chainsaw.

1. Apply a light oil to the Chain before using, and after every 10 minutes of use.
Oil is automatically applied when the Oil Bottle is full. The Chain must always be well lubricated when the Chainsaw is in use.
2. The Chain must be snug at all times. If the Chain becomes loose, remove the Left Chain Cover (12) and retighten Chain Guide Bar (14) mounting hardware.
3. Periodically sharpen Chain. Chain must be sharp for efficient saw operation.
4. To clean the Chainsaw, wipe with a clean rag. Apply a small amount of light oil. Periodically remove Right Chain Cover (1) and clean out debris. Replace cover.
5. Periodically recharge the Battery when not in use. This will maintain Battery life.
6. Periodically turn the Chain Guide Bar (14) over to distribute the wear on it. Replace Guide Bar when bent, cracked, or when the Chain moves side-to-side on it.

Parts List

Item #	Description
1	Right Chain Cover
2	Inner Gear
3	Epicyclic Gear
4	Spindle
5	Bearing
6	Plate
7	Crosshead Self-tapping Screw
8	Washer
9	Sprocket
10	Washer, Bore
11	Locking Ring
12	Left Chain Cover
13	Crosshead Self-tapping Screw
14	Chain Guide Bar
15	Chain
16	Washer
17	Spring Washer
18	Bolt
19	Front Hand Guard
20	Crosshead Self-tapping Screw

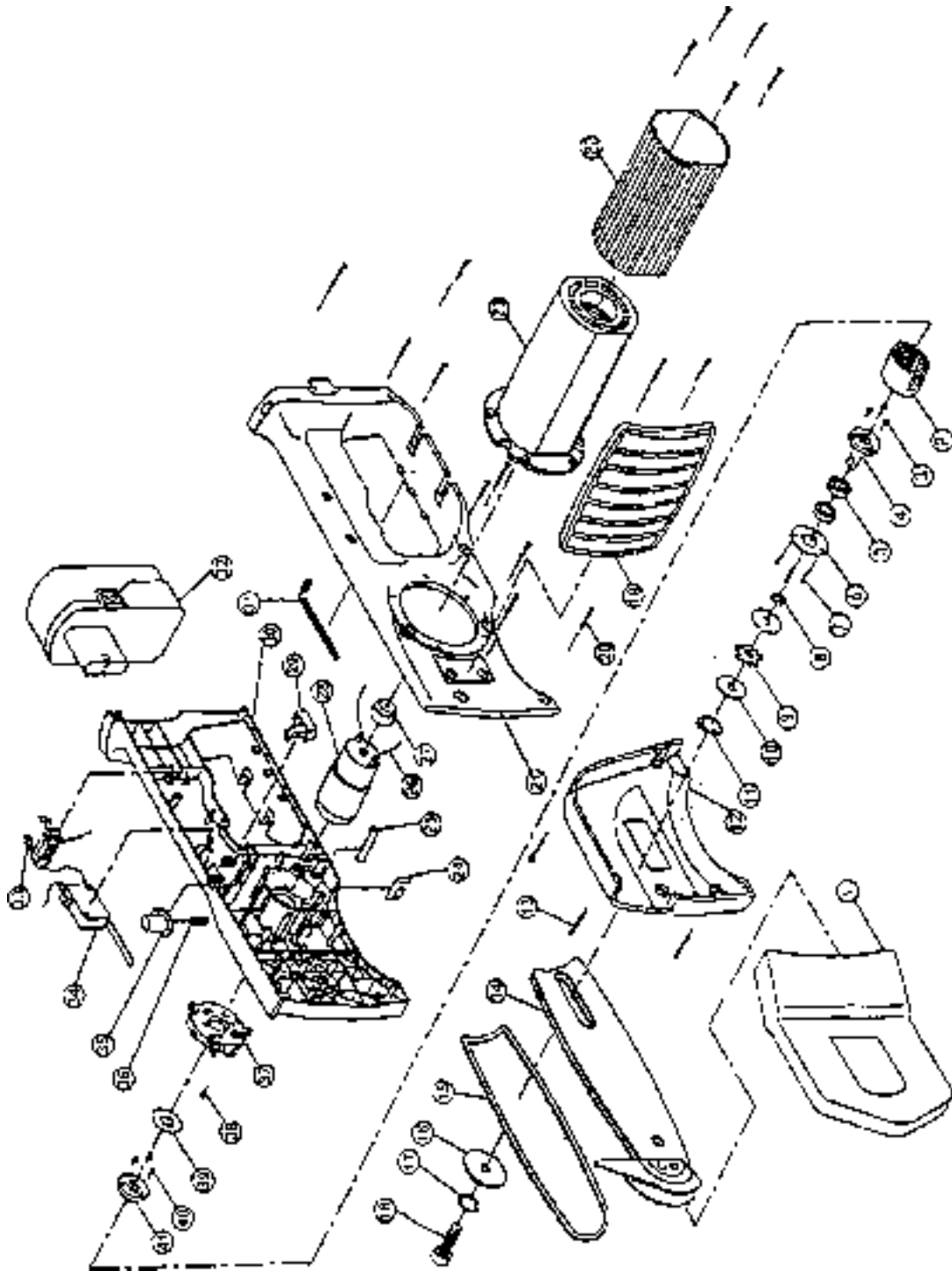
Item #	Description
21	Left Case
22	Rubber Cover
23	Motor Cover
24	Relief
25	Spring
26	Electric Wire
27	Motor Support
28	Motor and Gear Assy
29	Switch Button
30	Right Case
31	Hex Key
32	Battery
33	Connector, Body to Battery
34	Switch
35	Safety Switch
36	Safety Spring
38	Crosshead Self-tapping Screw
39	Washer, Large
40	Epicyclic Gear
41	Gear Plate, Inner

NOTE: Some parts are listed and shown for illustration purposes only and are not available individually as replacement parts.

PLEASE READ THE FOLLOWING CAREFULLY

THE MANUFACTURER AND/OR DISTRIBUTOR HAS PROVIDED THE PARTS DIAGRAM IN THIS MANUAL AS A REFERENCE TOOL ONLY. NEITHER THE MANUFACTURER NOR DISTRIBUTOR MAKES ANY REPRESENTATION OR WARRANTY OF ANY KIND TO THE BUYER THAT HE OR SHE IS QUALIFIED TO MAKE ANY REPAIRS TO THE PRODUCT OR THAT HE OR SHE IS QUALIFIED TO REPLACE ANY PARTS OF THE PRODUCT. IN FACT, THE MANUFACTURER AND/OR DISTRIBUTOR EXPRESSLY STATES THAT ALL REPAIRS AND PARTS REPLACEMENTS SHOULD BE UNDERTAKEN BY CERTIFIED AND LICENSED TECHNICIANS AND NOT BY THE BUYER. THE BUYER ASSUMES ALL RISK AND LIABILITY ARISING OUT OF HIS OR HER REPAIRS TO THE ORIGINAL PRODUCT OR REPLACEMENT PARTS THERETO, OR ARISING OUT OF HIS OR HER INSTALLATION OF REPLACEMENT PARTS THERETO.

Assembly Drawing



Free Manuals Download Website

<http://myh66.com>

<http://usermanuals.us>

<http://www.somanuals.com>

<http://www.4manuals.cc>

<http://www.manual-lib.com>

<http://www.404manual.com>

<http://www.luxmanual.com>

<http://aubethermostatmanual.com>

Golf course search by state

<http://golfingnear.com>

Email search by domain

<http://emailbydomain.com>

Auto manuals search

<http://auto.somanuals.com>

TV manuals search

<http://tv.somanuals.com>