

One
Stop[®]
GARDENS

SPRAYER

ASSEMBLY AND OPERATING INSTRUCTIONS

MODEL 95690: 2 GAL. TANK CAPACITY
MODEL 95692: 1.25 GAL. TANK CAPACITY



Visit our website at: <http://www.harborfreight.com>



Read this material before using this product.
Failure to do so can result in serious injury.
SAVE THIS MANUAL.

Copyright© 2007 by Harbor Freight Tools®. All rights reserved. No portion of this manual or any artwork contained herein may be reproduced in any shape or form without the express written consent of Harbor Freight Tools. Diagrams within this manual may not be drawn proportionally. Due to continuing improvements, actual product may differ slightly from the product described herein. Tools required for assembly and service may not be included.

For technical questions or replacement parts, please call 1-800-444-3353.

Revised Manual 09j

PRODUCT SPECIFICATIONS

	Model 95690	Model 95692
Tank Capacity	2 Gallons	1.25 Gallons
Product Applications	For use in applying water or water based liquid stains, liquid sealers, liquid pesticides and liquid herbicides. Not for use with flammable, combustible, or corrosive liquids.	For use in applying water or water based liquid stains, liquid sealers, liquid pesticides and liquid herbicides. Not for use with flammable, combustible, or corrosive liquids.
Pump Type	Manual (Hand operated piston pump)	Manual (Hand operated piston pump)
Overall Dimensions	32-3/4" H x 7" Diameter (with Handle extended)	27-1/2" H x 7" Diameter (with Handle extended)
Spray Lance Length	14-1/2"	14-1/2"
Spray Hose Length	4 Feet	4 Feet
Unit Weight	3.3 Pounds	2.7 Pounds
Maximum Spray Distance	3' 4" approximate	3' 4" approximate
Maximum PSI	45 PSI	45 PSI

SAVE THIS MANUAL

You will need this manual for the safety warnings and precautions, assembly, operating, inspection, maintenance and cleaning procedures, parts list and assembly diagram. Keep your invoice with this manual. Write the invoice number on the inside of the front cover. Keep this manual and invoice in a safe and dry place for future reference.

UNPACKING

When unpacking, check to make sure all the parts shown in the Parts List on page 9 are included. If any parts are missing or broken, please call Harbor Freight Tools at the number shown on the front cover of this manual as soon as possible.

GENERAL SAFETY RULES

IMPORTANT SAFETY INSTRUCTIONS



READ AND UNDERSTAND ALL INSTRUCTIONS
Failure to follow all instructions detailed in this manual may result in serious personal injury.

SAVE THESE INSTRUCTIONS

WORK AREA

1. **Keep your work area clean and well lit.** Cluttered and dark work areas invite accidents.

2. **Keep bystanders, children, and visitors away while operating the Sprayer.** Distractions can cause you to lose control.

PERSONAL SAFETY

3. **Stay alert.** Watch what you are doing, and use common sense when operating a power tool. Do not use the Sprayer while tired or under the influence of drugs, alcohol, or medication. A moment of inattention while operating power tools may result in serious personal injury.
4. **Dress properly.** Do not wear loose clothing or jewelry. Contain long hair. Keep your hair, clothing, and gloves away from moving parts. Loose clothes, jewelry, or long hair can be caught in moving parts.
5. **Do not overreach.** Keep proper footing and balance at all times. Proper footing and balance enables better control of the Sprayer in unexpected situations.
6. **Always wear eye, breathing, and skin protection.** Wear ANSI-approved safety impact goggles, an ANSI approved respirator, latex gloves, and proper safety clothing when using this product.

TOOL USE AND CARE


7. **Do not force the Sprayer. Use the correct product for your application.** The correct product will do the job better and safer at the rate for which it is designed.
8. **Store idle tools and equipment out of reach of children and other untrained people.** Tools and equipment are dangerous in the hands of untrained users.
9. **Maintain the Sprayer with care.** Keep this product clean. A properly maintained tool is easier to control. Do not use damaged tools and equipment. Tag damaged tools and equipment "Do not use" until repaired.
10. **Check for misalignment or binding of moving parts, loose or broken parts, and any other condition that may affect the Sprayer's operation. If damaged, have the Sprayer serviced before using.** Many accidents are caused by poorly maintained tools and equipment.

SERVICE

11. **Product service must be performed only by qualified service technician.**
Service or maintenance performed by unqualified personnel could result in a risk of injury.
12. **When servicing the Sprayer, use only identical replacement parts.**
Follow instructions in the “Inspection, Maintenance, And Cleaning” section of this manual. Use of unauthorized parts or failure to follow maintenance instructions may create a risk of personal injury.


SPECIFIC SAFETY RULES

1. **Maintain labels and nameplates on the Sprayer.** These carry important information. If unreadable or missing, contact Harbor Freight Tools for a replacement.
2. **Use the right product for the job.** There are certain applications for which this product was designed. Do not use small tools, equipment, or attachments to do the work of larger industrial tools, equipment, or attachments. Do not use this product for a purpose for which it was not intended.
3. **Industrial applications must follow OSHA requirements.**
4. **Store idle tools.** When not in use, store the Sprayer in a clean, dry, safe location out of reach of children.
5. **This Sprayer is intended to be used only with water, liquid fertilizers, liquid herbicides, and liquid pesticides.** Never attempt to spray flammable, combustible, or corrosive liquids with the Sprayer.
6. **Always follow all chemical label precautions and local EPA (Environmental Protection Agency) regulations when using liquid chemicals.** Do not touch harmful chemicals. After use, clean the Sprayer thoroughly with agents recommended by the chemical manufacturer.
7. **Never point the nozzle of the Spray Gun Assembly at yourself or other people.**
8. **A note on disposal of chemicals: Never attempt to burn unused fertilizers, herbicides, pesticides, or any other types of chemicals.** Make sure to check with your local solid waste authorities for proper disposal procedures.
9. **Always make sure children and animals do not have access to chemically treated areas.**

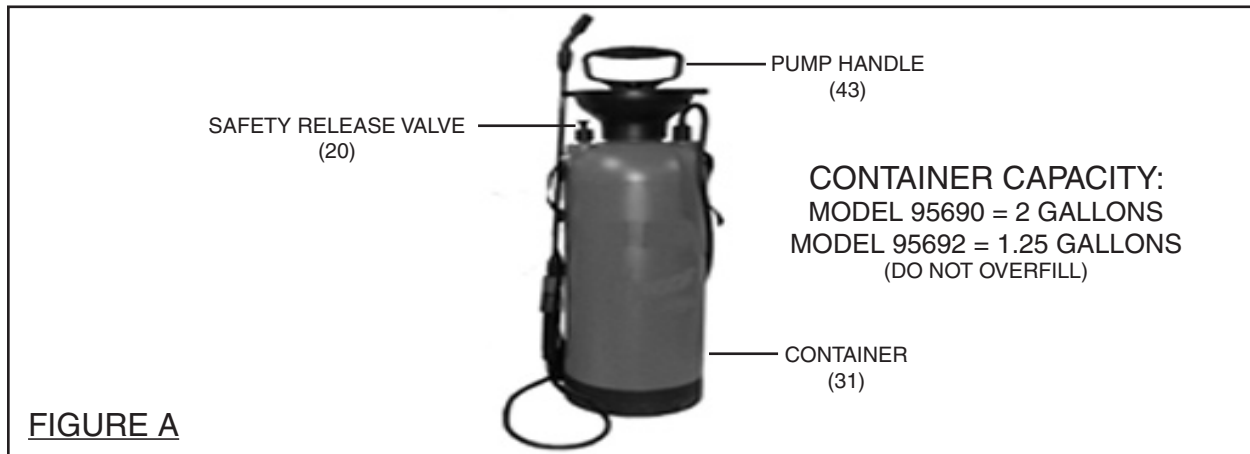
10. **Dry running will cause damage to the inner seals.** Make sure the water or liquid chemical supply used for the Sprayer is not dirty or sandy.
11. **Do not pull or carry the Sprayer by its Spray Gun Assembly.** Use the Handle on the Sprayer to move the tool from one location to another.
12. **The work area should have adequate drainage to reduce the possibility of a fall due to slippery surfaces.**
13. **This product is designed for outdoor use only.**
14. **Keep the Cap and Spray Gun Assembly of the Sprayer connected to the tool while the system is pressurized.** Prior to refilling or emptying the Tank, pull up on the Pressure Release Valve to completely depressurize the system.
15. **Prior to starting the Sprayer in cold weather, check all of the parts of the tool to make sure ice has not formed.** Do not store the Sprayer where the temperature will fall below 32° Fahrenheit.
16. **Do not keep water or any liquid chemicals in the Sprayer after use.**
17. **Make sure to clean the Filter of the Sprayer before each use.**
18. **Never leave the Sprayer unattended.** When finished using the Sprayer, empty the unit. Thoroughly clean the unit and store it in a clean, dry, safe location out of reach of children.
19.  **WARNING!** The warnings and cautions discussed in this manual cannot cover all possible conditions and situations that may occur. It must be understood by the operator that common sense and caution are factors which cannot be built into this product, but must be supplied by the operator.

OPERATING INSTRUCTIONS

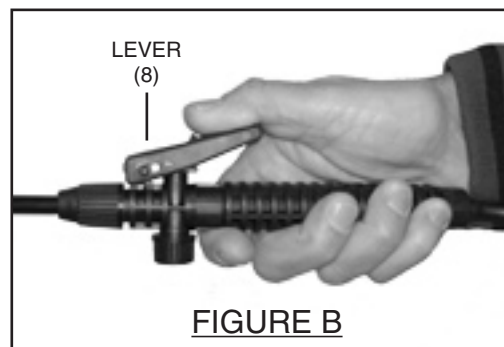
To Fill The Container (31):

1.  **CAUTION!** Always wear eye, breathing, and skin protection. Wear ANSI approved safety impact goggles, an ANSI approved respirator, latex gloves, and proper safety clothing when using this product.
2. Prior to filling the Container (31) of the Sprayer with liquid, pull up on the Safety Release Valve (20) to release any pressure within the Container. (See Figure A, [next page.](#))

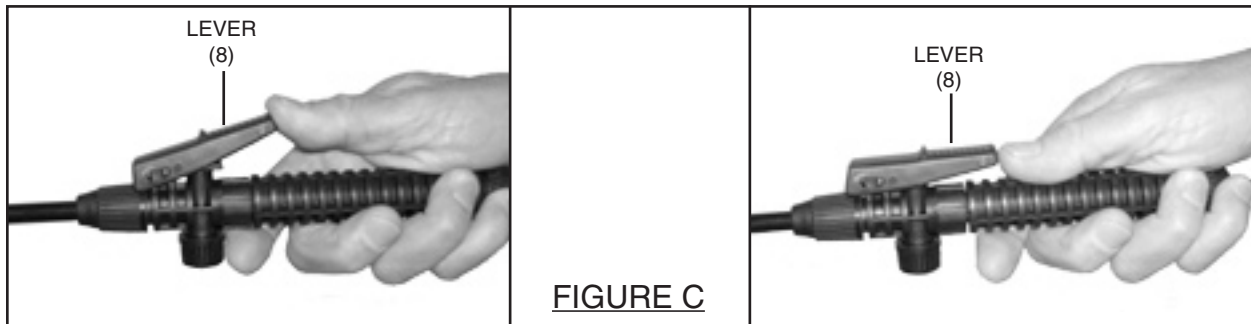
3. Make sure the Pump Handle (43) is in its down position. Next, turn the Pump Handle counterclockwise to loosen. Then, pull Pump Handle up and out of the Container (31). (See Figure A.)
4. Fill the Tank with up to 2 gallons of liquid (for model 95690) or 1.25 gallons (for model 95692). Then, insert the Pump Handle back into the Container and turn the Pump Handle clockwise to secure it in place. (See Figure A.)



5. NOTE: The Sprayer is heavy when completely filled with liquid. Always get assistance when strapping the Sprayer onto your body. If necessary, adjust the Belt (28) for comfort. (See Assy. Diagram.)
6. Always make sure other adults, children, and animals do not have access to the area(s) in which you intend to chemically treat.
7. Pump the Pump Handle (43) to build up sufficient pressure in the Sprayer system. Once the system is pressurized (as indicated by an increased tension on the Pump Handle), you may discontinue pumping the Pump Handle. (See Figure A.)
8. Point the Nozzle of the Spray Gun Assembly toward the area to be sprayed. Then, squeeze the Lever (8) on the Spray Gun Assembly to begin spraying. (See Figure B.)





9. NOTE: For a continuous spray mode, press the Lever (8) forward and down to its locked position. Then release your grip on the Lever. To stop the continuous spray mode, press down, then let up on the Lever. (See Figure C.)



10. As you spray, the system will begin to depressurize. When the distance of the spray diminishes you will need to stop spraying momentarily. Then, resume pumping the Pump Handle (43) to re-pressurize the system before spraying again. (See Figure A.)
11. If it becomes necessary to refill the Container (31) of the Sprayer, pull up on the Safety Release Valve (20) to completely de-pressurize the system. Remove the Pump Handle (43) from the Container. Refill the Container with liquid, and replace the Pump Handle. Pump the Pump Handle to pressurize the system, and continue spraying. (See Figure A.)
12. When finished spraying, de-pressurize the system by pulling up on the Safety Release Valve (20). Remove the Pump Handle (43) from the Container (31) and empty any remaining liquid into a safe and secure container. Clean the Sprayer thoroughly with agents recommended by the chemical manufacturer. Allow the unit to air-dry. Replace the Pump Handle, and store the Sprayer in a clean, dry, safe location out of reach of children. (See Figure A.)

INSPECTION, MAINTENANCE, AND CLEANING

1.  CAUTION! Always de-pressurize the system by pulling up on the Safety Release Valve (20) before performing any inspection, maintenance, or cleaning of the Sprayer.
2. Before each use, inspect the general condition of the Sprayer. Check for misalignment or binding of moving parts, damaged or loose parts, dirt or debris in the Nozzle, and any other condition that may affect the tool's safe operation. If abnormal noise or vibration occurs, have the problem corrected before further use. Do not use damaged equipment.
3. Periodically, lubricate all moving parts of the Pump Handle (43) assembly.

4. To clean: If using liquid chemicals, flush the interior and clean the exterior of the Sprayer and its Spray Gun Assembly thoroughly with cleaning agents recommended by the chemical manufacturer. Then, allow to air-dry. Do not use solvents.
5. When storing: Always completely empty the Sprayer of liquid. Frost will damage the Sprayer if the unit contains liquid. Store the Sprayer in an indoor area such as a garage or shed. Make sure to store the Sprayer and any chemicals in a safe, dry, clean location out of reach of children.
6.  **CAUTION!** All maintenance, service, and repairs not discussed in this manual should only be performed by a qualified service technician.

TROUBLESHOOTING

Problem	Possible Solution
Unit does not spray.	<ol style="list-style-type: none"> 1. Make sure there is an adequate amount of liquid in the Container. 2. Pump the Pump Handle to pressurize the system. (Do not squeeze the Lever on the Spray Gun Assembly when performing this procedure.) 3. Make sure the Pump Handle is secured tightly onto the Container. 4. Make sure all connections to the Container are secure. 5. Make sure the Spray Head Nut is clear of dirt and debris.
Spray pattern is undesirable.	<ol style="list-style-type: none"> 1. Make sure the Spray Head Nut is clear of dirt and debris. 2. Make sure the Sprayer is fully pressurized.

PLEASE READ THE FOLLOWING CAREFULLY

THE MANUFACTURER AND/OR DISTRIBUTOR HAS PROVIDED THE PARTS LIST AND ASSEMBLY DIAGRAM IN THIS MANUAL AS A REFERENCE TOOL ONLY. NEITHER THE MANUFACTURER OR DISTRIBUTOR MAKES ANY REPRESENTATION OR WARRANTY OF ANY KIND TO THE BUYER THAT HE OR SHE IS QUALIFIED TO REPLACE ANY PARTS OF THE PRODUCT. IN FACT, THE MANUFACTURER AND/OR DISTRIBUTOR EXPRESSLY STATES THAT ALL REPAIRS AND PARTS REPLACEMENTS SHOULD BE UNDERTAKEN BY CERTIFIED AND LICENSED TECHNICIANS, AND NOT BY THE BUYER. THE BUYER ASSUMES ALL RISKS AND LIABILITY ARISING OUT OF HIS OR HER REPAIRS TO THE ORIGINAL PRODUCT OR REPLACEMENT PARTS THERE-TO, OR ARISING OUT OF HIS OR HER INSTALLATION OF REPLACEMENT PARTS THERETO.

PARTS LIST

Part	Description	Qty.
1	Spray Head Nut	1
2	Separate Plate	1
3	O-Ring (14 x 2)	1
4	Bend	1
5	Spindle Nut	2
6	Spindle	1
7	Switch Pin	1
8	Lever	1
9	Switch Body	1
10	Valve Core O-Ring (6.8 x 1.6)	2
11	Valve Core O-Ring (7.6 x 1.9)	1
12	Valve Core	1
13	Switch Spring	1
14	Switch Sealing Washer	1
15	Switch Nut	1
16	Handle Sealing Washer	1
17	Handle Sealing Washer	1
18	Hose Nut	2
19	Hose	1
20	Safety Release Valve	1
21	Safety Valve Sealing Washer	1
22	Safety Cap	1

Part	Description	Qty.
23	Safety Spring	1
24	Fixed Buckle	1
25	Flat Sealing Washer	2
26	Belt Ring	2
27	Belt Buckle	2
28	Belt	1
29	Container Cap	1
30	Container Sealing Washer	1
31	Container	1
32	Container Bottom	1
33	Hose Connector	1
34	Suction Tube	1
35	Filter	1
36	Pump Nut	1
37	Direction Limiter	1
38	Piston	1
39	Piston O-Ring (35 x 4.8)	1
40	Air Tube	1
41	Air Tube Sealing Washer	1
42	Pump Sealing Washer	1
43	Pump Handle	1

IMPORTANT INFORMATION WHEN ORDERING PARTS:

When ordering parts, make sure to specify model number (95690 or 95692) and the part number.

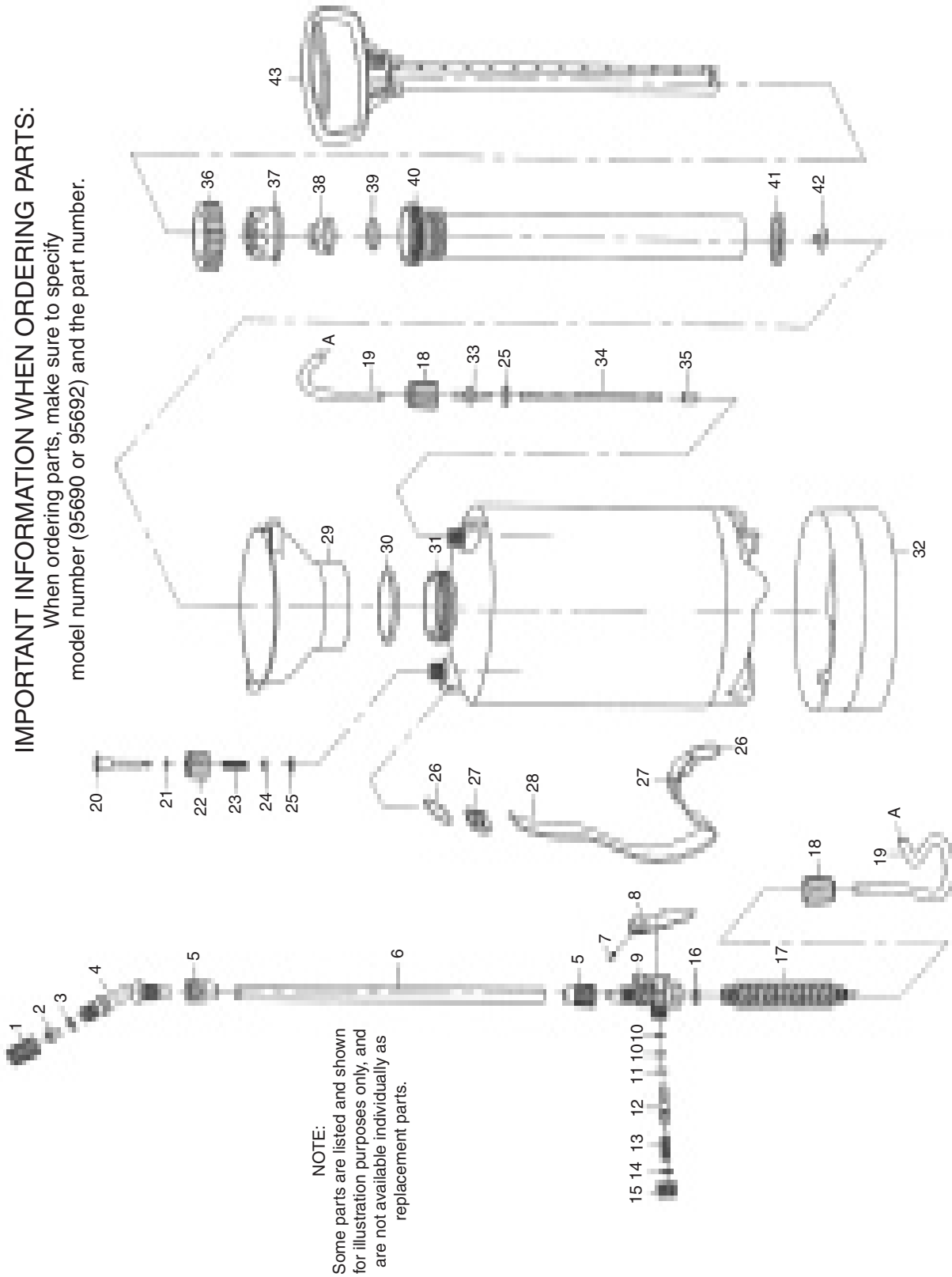
NOTE:

Some parts are listed and shown for illustration purposes only, and are not available individually as replacement parts.

ASSEMBLY DIAGRAM

IMPORTANT INFORMATION WHEN ORDERING PARTS:

When ordering parts, make sure to specify model number (95690 or 95692) and the part number.



NOTE:
Some parts are listed and shown for illustration purposes only, and are not available individually as replacement parts.

Free Manuals Download Website

<http://myh66.com>

<http://usermanuals.us>

<http://www.somanuals.com>

<http://www.4manuals.cc>

<http://www.manual-lib.com>

<http://www.404manual.com>

<http://www.luxmanual.com>

<http://aubethermostatmanual.com>

Golf course search by state

<http://golfingnear.com>

Email search by domain

<http://emailbydomain.com>

Auto manuals search

<http://auto.somanuals.com>

TV manuals search

<http://tv.somanuals.com>