

U.S. GENERAL

BATTERY CUT-OFF SWITCH

Model 92688

ASSEMBLY AND OPERATING INSTRUCTIONS



3491 Mission Oaks Blvd., Camarillo, CA 93011
Visit our Web site at <http://www.harborfreight.com>

Copyright[©] 2005 by Harbor Freight Tools[®]. All rights reserved. No portion of this manual or any artwork contained herein may be reproduced in any shape or form without the express written consent of Harbor Freight Tools.

For technical questions and replacement parts, please call 1-800-444-3353

Specifications

Capacity @ 12 Volts: 100 Amps / 1000 Amps Surge
Capacity @ 24 Volts: 50 Amps / 500 Amps Surge

Save This Manual

You will need the manual for the safety warnings and precautions, assembly instructions, operating and maintenance procedures, parts list and diagram. Keep your invoice with this manual. Write the invoice number on the inside of the front cover. Keep the manual and invoice in a safe and dry place for future reference.

Safety Warnings and Precautions

WARNING: When using product, basic safety precautions should always be followed to reduce the risk of personal injury and damage to equipment.

Read all instructions before using this product!

1. **Keep work area clean.** Cluttered areas invite injuries.
2. **Observe work area conditions.** Do not use in damp or wet locations. Don't expose to rain. Keep work area well lit.
3. **Keep children away.** Children must never be allowed in the work area. Do not let them handle the Battery Cut-Off Switch.
4. **Store idle equipment.** When not in use, the Battery Cut-Off Switch must be stored in a dry location to inhibit rust. Always lock up the Battery Cut-Off Switch and keep out of reach of children.
5. **Use the right product for the job.** Do not attempt to force a small product to do the work of a larger industrial product. There are certain applications for which this product was designed. It will do the job better and more safely at the rate for which it was intended. Do not modify this product and do not use this product for a purpose for which it was not intended.
6. **Dress properly.** Do not wear loose clothing or jewelry as they can be caught in moving parts. Protective, electrically nonconductive clothes and nonskid footwear are recommended when working. Wear restrictive hair covering to contain long hair.
7. **Use eye protection.** Always wear ANSI approved impact safety goggles.
8. **Do not overreach.** Keep proper footing and balance at all times.
9. **Maintain products with care.** Keep the Battery Cut-Off Switch clean for better and safer performance. The Keys must be kept clean, dry, and free from oil and grease at all times.

10. **Stay alert.** Watch what you are doing, use common sense. Do not install or use the Battery Cut-Off Switch when you are tired.
11. **Check for damaged parts.** Before using any product, any part that appears damaged should be carefully checked to determine that it will operate properly and perform its intended function. Check for alignment and binding of moving parts; any broken parts or mounting fixtures; and any other condition that may affect proper operation. Any part that is damaged should be properly repaired or replaced by a qualified technician. Do not use the Battery Cut-Off Switch if the Key does not turn On and Off properly.
12. **Replacement parts and accessories.** When servicing, replace a damaged key only with an approved replacement key. Use of any other parts will void the warranty. Approved keys are available from Harbor Freight Tools.
13. **Do not operate or install product if under the influence of alcohol or drugs.** Read warning labels if taking prescription medicine to determine if your judgment or reflexes are impaired while taking drugs. If there is any doubt, do not operate the product.
14. **Maintenance.** For your safety, service and maintenance should be performed regularly by a qualified technician.

WARNING: The brass components of this product contain lead, a chemical known to the State of California to cause birth defects (or other reproductive harm). (California Health & Safety code § 25249.5, et seq.)

Warning: The warnings, cautions, and instructions discussed in this instruction manual cannot cover all possible conditions and situations that may occur. It must be understood by the operator that common sense and caution are factors which cannot be built into this product, but must be supplied by the operator.

IMPORTANT

This device, like any other antitheft device, is not undefeatable. Harbor Freight Tools cannot be held responsible for any loss of or damage to the vehicle that this unit is installed in due to theft.

Unpacking

When unpacking, check to make sure the Switch and two keys are included. If any parts are missing or broken, please call Harbor Freight Tools at the number on the cover of this manual as soon as possible.

Operation

Harbor Freight Tools recommends that the Battery Cut-Off Switch be installed by a professional technician.

Mounting

1. The Battery Cut-Off Switch (1) must be securely mounted using both mounting holes before use.
2. It must be mounted in a location where:
 - a. it will be accessible.
 - b. it will have ample clearance for the key.
 - c. it will be away from any hot or metallic parts of the engine.
 - d. it will not encounter interference from nearby objects.
 - e. the positive cable (for negative ground vehicles), or negative cable (for rare positive ground vehicles) can be safely routed to.
3. Only install this unit when the negative clamp is disconnected and insulated from the battery terminal.

Warning!! If the terminal on the Battery Cut-Off Switch comes in contact with a grounded piece of metal, serious damage (including explosion and fire) to the vehicle/battery may occur.

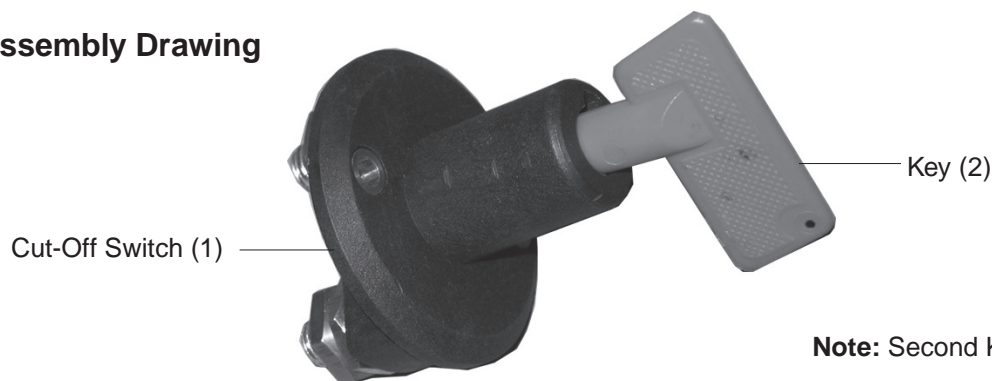
Usage

1. To allow the battery to start and run your vehicle, insert the Key (2) and turn it, as shown in **Assembly Drawing** below.
2. When you want to cut off the battery and keep the vehicle from starting, remove the Key (2). This enables the Cut-Off Switch.

Note: When you enable the Cut-Off Switch by removing the Key (2), your battery will disconnect and most clocks will stop operating and other preset functions may be erased.

Check that the battery is truly disconnected (try to start the engine) every time BEFORE leaving the vehicle. It is the responsibility of the vehicle's owner to verify that this unit is disconnecting the battery properly.

Assembly Drawing



NOTE: Some parts are listed and shown for illustration purposes only and are not available individually as replacement parts.

Free Manuals Download Website

<http://myh66.com>

<http://usermanuals.us>

<http://www.somanuals.com>

<http://www.4manuals.cc>

<http://www.manual-lib.com>

<http://www.404manual.com>

<http://www.luxmanual.com>

<http://aubethermostatmanual.com>

Golf course search by state

<http://golfingnear.com>

Email search by domain

<http://emailbydomain.com>

Auto manuals search

<http://auto.somanuals.com>

TV manuals search

<http://tv.somanuals.com>