

# 266xs Compressor

Compressor/Gate

dbx<sup>®</sup>  
by HARMAN



## Bring a more professional sound to your mix

Adding a dbx<sup>®</sup> 266xs Compressor/Gate to your live sound rig or studio gives you more dynamic control to help create a more polished, professional sound. Having compression in your audio chain gives you the ability to smooth out uneven levels, add sustain to guitars and fatten up your drum sound. It also makes it easy to bring vocals to the front of your mix - adding greater clarity and making them stand out from the surrounding instruments.

dbx knows compressors...after all we invented them! The 266xs is the latest in a long line of the world's most successful compressors from the inventors of the technology. Its patented Overeasy<sup>®</sup> compression technology provides smooth and musical performance while the AutoDynamic<sup>™</sup> attack and release controls, found only on dbx compressors, puts great sound within easy reach. The 266xs can operate in stereo or dual-mono modes, has true RMS power summing and features XLR and 1/4" TRS inputs and outputs. It cuts no corners on visual feedback with gain reduction metering and easy-to-read backlit switches.

## Features

- ▶ Error-proof operation to smooth uneven levels, add sustain to guitars, fatten drums or tighten up mixes
- ▶ New gate timing algorithms ensure the smoothest release characteristics
- ▶ Program-adaptive expander/gates
- ▶ Great sounding dynamics control for any type of program material
- ▶ Separate precision LED displays for gain reduction, compression threshold and gate threshold allow quick, accurate setup
- ▶ Stereo or dual-mono operation
- ▶ Balanced inputs and outputs on 1/4" TRS and XLR connectors
- ▶ Side Chain insert
- ▶ Classic dbx "Auto" mode

Who uses this product:



BANDS



DJs



SOUND  
INSTALLATION



STUDIO



BROADCAST

dbx Professional  
Products

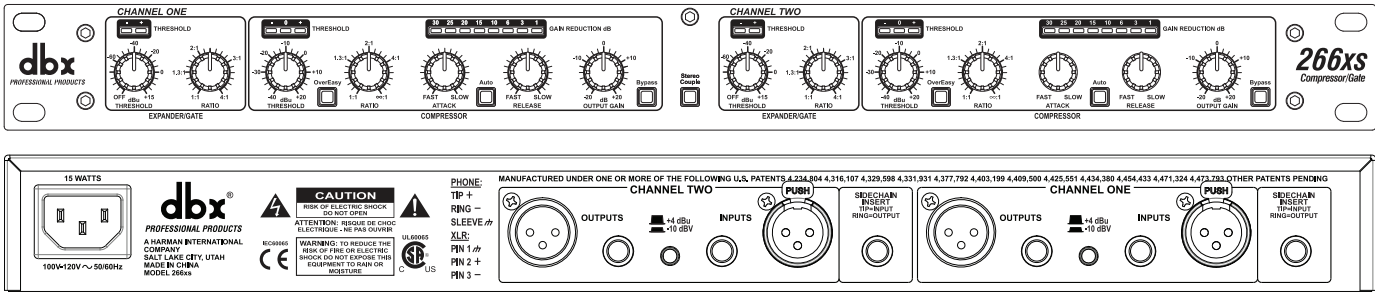
8760 S. Sandy Pkwy.  
Sandy, Utah 84070

1.801.568.7660 PHONE  
1.801.568.7662 FAX

1.801.568.7583 INT'L FAX  
customer@dbxpro.com  
www.dbxpro.com

# 266xs Compressor

Compressor/Gate



## Specifications

**INPUTS:** 1/4" TRS, female XLR (pin 2 hot)  
 Type: Electronically balanced/unbalanced, RF filtered  
 Impedance: Balanced 40k $\Omega$ , unbalanced 20k $\Omega$   
 Max Input Level: >+22dBu balanced or unbalanced

**OUTPUTS:**  
 Connectors: 1/4" TRS, male XLR (pin 2 hot)  
 Type: Impedance-balanced/unbalanced, RF filtered  
 Impedance: +4 dBu: Balanced 100 $\Omega$   
 unbalanced 50 $\Omega$   
 -10 dBu: Balanced 1k $\Omega$   
 unbalanced 500 $\Omega$   
 Max Output Level: >+21dBu balanced/unbalanced into 2k $\Omega$  or greater  
 >+18dBm balanced/unbalanced (into 600 $\Omega$ )

**SIDECHAIN INSERT:** Normalled: Tip is Input, Ring is Output  
 Tip: Impedance >10k $\Omega$   
 Maximum Level >+22dBu  
 Ring: Impedance 2k $\Omega$   
 Maximum Level >+20dBu

**COMPRESSOR:** Selectable OverEasy<sup>®</sup> or hard-knee  
 Threshold Range -40dBu to +20dBu  
 Compression Ratio 1:1 to Infinity:1  
 Attack Time Scalable Program-Dependent AutoDynamic™  
 Release Time Scalable Program-Dependent AutoDynamic™

**EXPANDER/GATE:**  
 Threshold Range -60dBu to +10dBu  
 Expansion Ratio 1:1 to 4:1  
 Attack Time <100 $\mu$ Sec  
 Release Time Program-Dependent

**SYSTEM PERFORMANCE:**  
 Bandwidth: 0.35Hz - 90kHz, +0, -3dB  
 Frequency Response (Flat): 20Hz - 20kHz, +0/-0.5dB  
 Noise: <-93dB, unweighted (22kHz measurement band width)  
 THD+N: <0.2%; Any amount of compression at 1kHz  
 Intermodulation Distortion: <0.2% SMPTE  
 Dynamic Range: >114dB, unweighted  
 Interchannel Crosstalk: <-95dB, 20Hz to 20kHz  
 Common Mode Rejection: >40dB, typically >55dB @ 1kHz  
 Stereo Coupling: True RMS Power Summing™

**POWER SUPPLY:**  
 Power Requirements 15 Watts  
 Operating Voltage 100VAC -120VAC 50/60Hz; 230VAC 50/60Hz  
 Operating Temperature 32°F to 113°F (0°C to 45°C)

**PHYSICAL:**  
 Dimensions 1.75" x 5.75" x 19" (4.5cm x 14.6cm x 48.26cm)  
 Weight Net Weight: 4.84 lbs/2.19 Kg  
 Shipping Weight: 6.6 lbs/2.99 Kg

Note: 0dBu = 0.775VRMS

dbx engineers are constantly working to improve the quality of our products. Specifications are, therefore subject to change without notice.

## Free Manuals Download Website

<http://myh66.com>

<http://usermanuals.us>

<http://www.somanuals.com>

<http://www.4manuals.cc>

<http://www.manual-lib.com>

<http://www.404manual.com>

<http://www.luxmanual.com>

<http://aubethermostatmanual.com>

Golf course search by state

<http://golfingnear.com>

Email search by domain

<http://emailbydomain.com>

Auto manuals search

<http://auto.somanuals.com>

TV manuals search

<http://tv.somanuals.com>