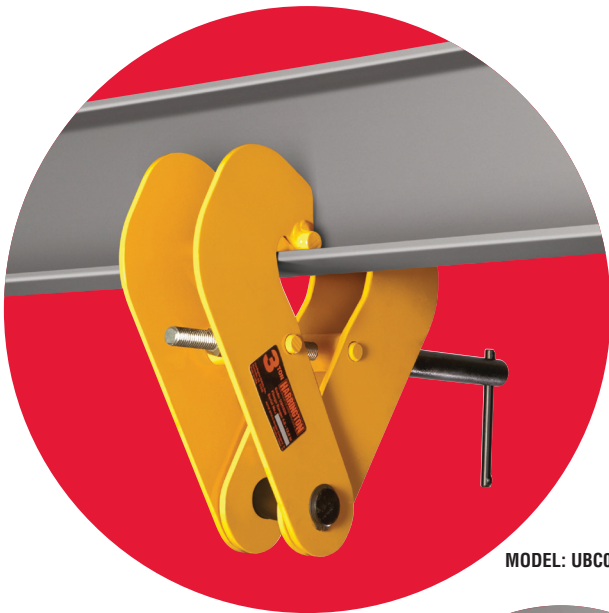


# UBC Universal Beam Clamp



MODEL: UBC030



MODEL: UBC030 WITH  
UBC SUSPENDER OPTION

## Ultimate Suspension Accessory

Harrington's UBC Universal Beam Clamp is the perfect accessory when a temporary or semi-permanent hoist anchor point is required. Additionally used as a below-the-hook lifting attachment, this adjustable beam clamp offers an efficient, cost effective method for most workholding and positioning applications. Available in capacities of 1, 2, 3, 5 and 10 Tons.

## Adjustable Attachment

### Easy Operation

- Lightweight portable design
- Left-hand and right-hand clamp screw allows for quick clamping and unclamping
- Jaw opening adjusts for a wide range of tapered or flat-flanged beams
- Optional UBC suspender for perpendicular mounting and for oversized hooks

### Dependability and Design

- Meets ASME BTH-1, ASME B30.20 and complies with portions of ASME B30.16 for use with manual and powered hoists
- Design factor minimum of 5:1 per ASME B30.16 requirements
- Lock nut feature resists loosening to improve secure clamping
- Built-in suspension pin for low headroom
- Metric rated capacity
- Each Universal Beam Clamp is individually serialized and load tested (test certificates included)
- Made in the USA

### Applications

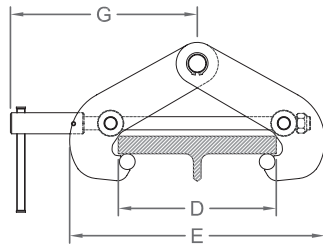
- Industrial and construction lifting applications
- Overhead lifting and vertical rigging operations
- Holding and positioning beams for construction

***Ask your local sales representative or call our Customer Service staff for friendly and expert advice on models and options.***

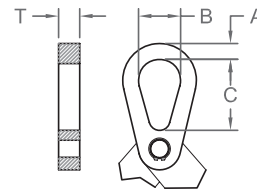
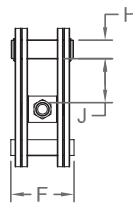
## UBC UNIVERSAL BEAM CLAMP — SPECIFICATIONS AND DIMENSIONS

Capacity (Tons)	Product Code	Flange Range D (in)	Max. Beam Flange Thickness (in)	Max. E (in)	F (in)	G (in)	H (in)	J (in)	UBC Suspender Option				Net Weight (lbs)*	Shipping Weight Approx. (lbs)*
									A (in)	B (in)	C (in)	T (in)		
1	UBC010	3.00 to 7.50	0.83	12.25	3.00	9.25	0.88	2.10	0.75	2.00	2.00	0.63	8	10
2	UBC020												9	11
3	UBC030	4.00 to 12.00	1.00	19.75	4.25	11.0	1.25	2.38	1.00	2.50	2.50	1.00	19	22
5	UBC050												22	25
10	UBC100	6.00 to 13.25	1.75	22.50	6.00	14.63	1.75	4.65	1.38	3.75	6.25	1.25	55	60

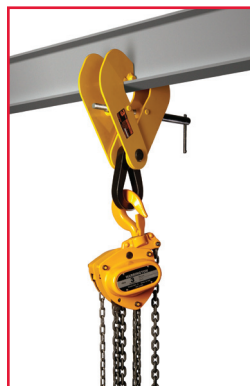
\*The weights listed are for standard universal beam clamps without large suspenders.



Universal Beam Clamp



UBC Suspender Option



**Harrington Hoists, Inc.**  
401 West End Avenue, Manheim, PA 17545  
717-665-2000 / 800-233-3010 / Fax: 717-665-2861  
www.harringtonhoists.com

**Harrington Hoists, Inc.—Western Division**  
2341 Pomona Road, No. 103  
Corona, CA 92880-6973  
951-279-7100 / 800-317-7111 / Fax: 951-279-7500

Specifications and dimensions are subject to change without notice.  
Rev 0 Copyright © 2009 12-09  
Item No. SS-UBC

## Free Manuals Download Website

<http://myh66.com>

<http://usermanuals.us>

<http://www.somanuals.com>

<http://www.4manuals.cc>

<http://www.manual-lib.com>

<http://www.404manual.com>

<http://www.luxmanual.com>

<http://aubethermostatmanual.com>

Golf course search by state

<http://golfingnear.com>

Email search by domain

<http://emailbydomain.com>

Auto manuals search

<http://auto.somanuals.com>

TV manuals search

<http://tv.somanuals.com>