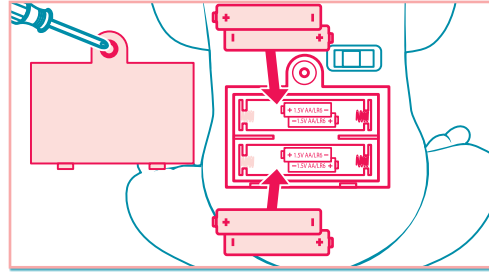


## TROUBLESHOOTING

If the doll is unresponsive, or if movement and sounds become erratic, the battery power may be low. Replace batteries.

## TO REPLACE BATTERIES

Use a Phillips screwdriver (not included) to loosen screw in battery compartment cover. (screw remains attached to cover). Remove cover. Remove and discard old batteries. Replace with fresh 4 x 1.5V "AA" or LR6 size alkaline batteries. [Alkaline batteries recommended.] Replace cover and tighten screw.



## IMPORTANT: BATTERY INFORMATION

### ⚠ CAUTION:

1. Always follow the instructions carefully. Use only batteries specified and be sure to insert them correctly by matching the + and - polarity markings.
2. Do not mix old batteries and new batteries or standard (carbon-zinc) with alkaline batteries.
3. Remove exhausted or dead batteries from the product.
4. Remove batteries if product is not to be played with for a long time.
5. Do not short-circuit the supply terminals.
6. Should this product cause, or be affected by, local electrical interference, move it away from other electrical equipment. Reset (switching off and back on again or removing and re-inserting batteries) if necessary.
7. **RECHARGEABLE BATTERIES:** Do not mix these with any other types of batteries. Always remove from the product before recharging. Recharge batteries under adult supervision. **DO NOT RECHARGE OTHER TYPES OF BATTERIES.**


### FCC Statement

This device complies with part 15 of the FCC Rules. Operation is subject to the following two conditions: (1) This device may not cause harmful interference, and (2) this device must accept any interference received, including interference that may cause undesired operation.

This equipment has been tested and found to comply with the limits for a Class B digital device, pursuant to Part 15 of the FCC Rules. These limits are designed to provide reasonable protection against harmful interference in a residential installation. This equipment generates, uses and can radiate radio frequency energy, and, if not installed and used in accordance with the instructions, may cause harmful interference to radio communications. However, there is no guarantee that interference will not occur in a particular installation. If this equipment does cause harmful interference to radio or television reception, which can be determined by turning the equipment off and on, the user is encouraged to try to correct the interference by one or more of the following measures:

- Reorient or relocate the receiving antenna.
- Increase the separation between the equipment and the receiver.
- Consult the dealer or an experienced radio/TV technician for help.

CAUTION: Changes or modifications not expressly approved by the party responsible for compliance could void the user's authority to operate the equipment.

 NOTE TO UK CONSUMERS: This product and its batteries must be disposed of separately at your local waste recycling centre. Do not dispose of in your household waste bin.

Product and colors may vary.

© 2009 Hasbro. All Rights Reserved.

TM & ® denote U.S. Trademarks.

19321

PN 7035000000



Questions? Call 1-800-327-8264

Download from [www.Somanuals.com](http://www.Somanuals.com). All Manuals Search And Download.

## ALSO INCLUDES:

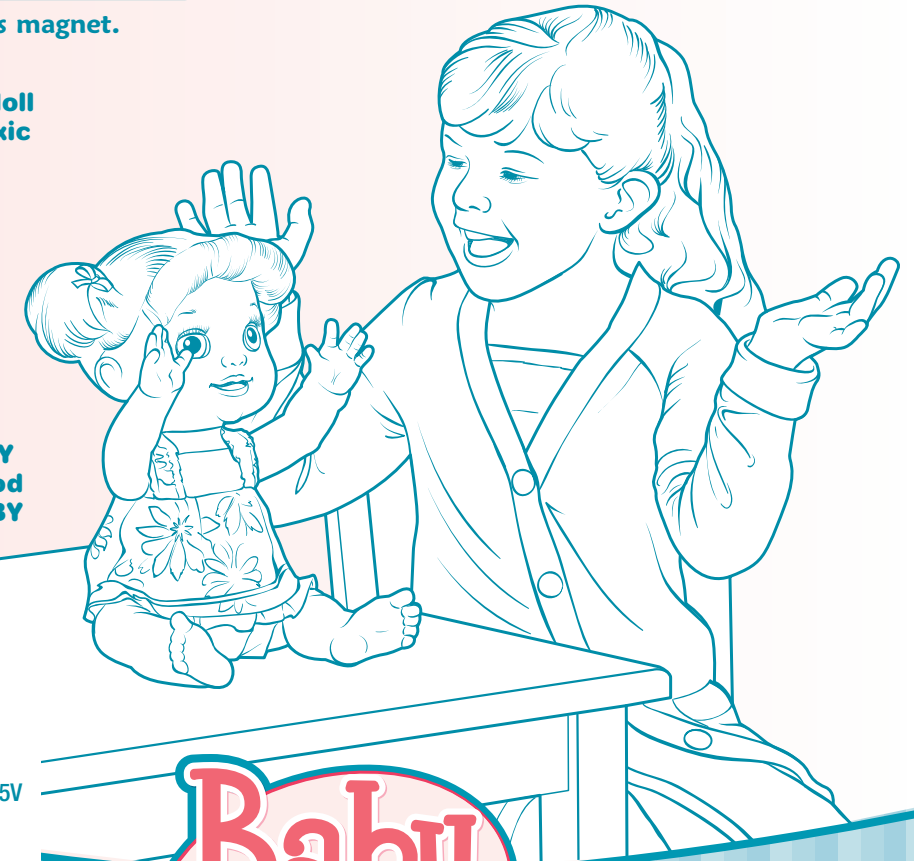


Bottle contains magnet.

**BABY ALIVE** doll food is nontoxic and made of food-grade ingredients, but it is **not intended to be eaten**. If accidentally ingested, however, it is not harmful. Use only **BABY ALIVE** doll food with your **BABY ALIVE** doll.

**x4** 1.5V AA  
R6 size  
**BATTERIES  
INCLUDED**

Replace with 4 x 1.5V "AA" or LR6 size alkaline batteries. Phillips/cross head screwdriver (not included) needed to replace batteries.



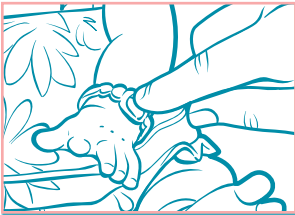
# Baby Alive®

## My Real Baby™

## TO PLAY



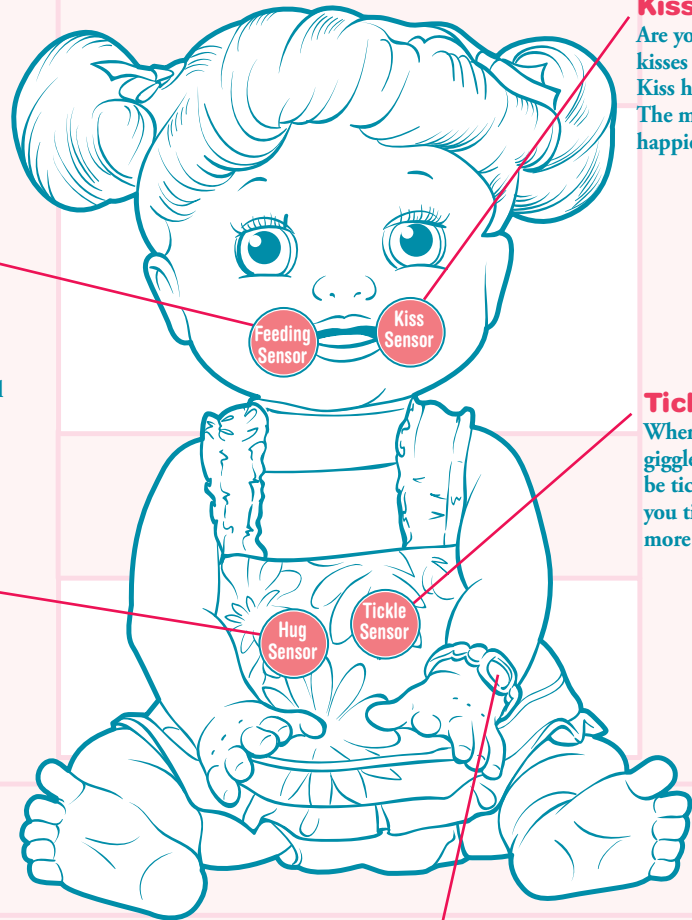
First make sure her ON/Off/Try Me switch is set to "ON". Your baby doll is now ready to play with you.



### Play Mode

How would you like to play with your baby doll today? Would you like to hear a joke or sing a song? How about a game of "let's pretend?" These are some of the things she will do in "Play Mode." Just keep pressing her bracelet and she'll suggest many more fun ways to play. You can respond to one of her suggestions by pressing the activating sensors as follows:

A sensor is a part of the toy that responds to your touch.



### Feeding Mode

When your baby doll says, "I'm hungry," she is ready for her bottle. Just place the bottle in her mouth and she will drink. She will let you know if she is full, or if she wants more.

### Hug Mode

When your baby doll says, "I like hugs," she's ready for you to give her a hug.

### Quiet Mode

Want to play without sounds? Press her bracelet for about 3 seconds and she'll go into her quiet mode. Press bracelet again to bring her out of quiet mode.

### Sleep Mode

If you don't play with your baby doll for about a minute, she'll fall asleep. Just press her bracelet to wake her up and she'll play with you again.

### Kiss Mode

Are you ready with lots of kisses for your baby doll? Kiss her on either cheek. The more you kiss her, the happier she is!

### Tickle Mode

When your baby doll giggles, she is ready to be tickled. The more you tickle her, the more she giggles!

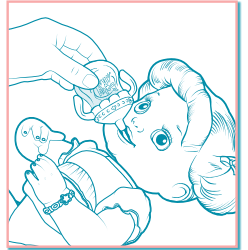
## FEEDING TIME

NOTE: Be sure to use only plain water or water mixed with doll juice mix with your baby doll. Do not use Baby Alive® Doll Food (sold separately); it is not intended for use with this doll.

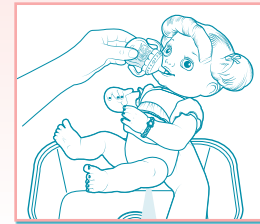
If you want your doll to fall asleep, continuously feed her with the bottle. She will yawn and close her eyes after a short time.

Before you feed your doll, make sure she's wearing a diaper that's securely fastened.

1. Fill water bottle with **cold, clean water** and a packet of doll juice mix. (This will make her "poop." To make her "pee," fill bottle with cold, clean water only.)
2. Tighten the bottle top securely.
3. Insert the bottle tip into the doll's mouth, and give the bottle **small, gentle squeezes**. The doll will raise her arms and make sucking sounds while "drinking."
4. After you take the bottle from the doll's mouth, she will either say that she is "all done" or ask for more.



## IMPORTANT MEALTIME GUIDELINES

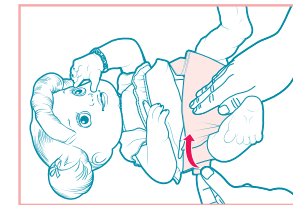


- Only give your doll ONE BOTTLE doll juice mix or water between diaper changes. Feeding the doll half a bottle is OK.
- Do not use real juice or other beverages besides cold, clean water.

To clean doll after feeding her doll juice mix, give her a bottle full of water until any remaining juice mix has been rinsed away and the water runs clear (it's best to do this over a sink). Use a soft cloth or paper towel to wipe away any juice mix on doll's mouth. Allow doll to dry.

## DIAPER TIME

After feeding your doll, you'll need to change her diaper!



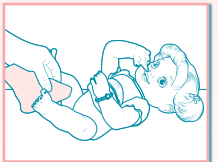
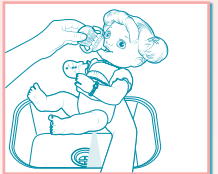
To change diaper:

1. Remove diaper and wipe doll clean with a soft, damp cloth or paper towel.
2. Put on a new diaper and fasten securely.
  - **ALWAYS** change your doll's diaper and clean her after she eats or drinks.
  - **NEVER** let your doll sit with a wet diaper.
  - Discard dirty diapers; they cannot be washed or reused.

## TO CLEAN

It is important to flush doll clean immediately after each use. If any doll juice mix remains in the doll, it can become difficult to clean.

- To clean doll after feeding her doll juice mix, give her a bottle full of water until any remaining juice mix has been rinsed away and the water runs clear (it's best to do this over a sink). Use a soft cloth or paper towel to wipe away any juice mix on doll's mouth. Allow doll to dry.
- **STAIN ADVISEMENT:** BABY ALIVE® doll juice mix may stain some surfaces. Adult supervision recommended. If spilled, wash with soap and water.
- Clean doll's face and body by wiping gently with a soft, damp cloth. **Do not rub.**
- **Do not submerge doll in water; it is not intended for bath-time play.**
- Do not place any foreign objects in doll's mouth or any other opening.
- Doll's clothes are machine-washable (mild detergent, cold water, gentle cycle, no bleach); they can also be spot-cleaned with a cool damp cloth; hang to dry.
- Hand-wash bottle with mild dish soap and water; it is **not** dishwasher-safe.



NOTE: To conserve batteries, turn switch to "OFF" when doll is not to be played with for extended periods of time.

## Free Manuals Download Website

<http://myh66.com>

<http://usermanuals.us>

<http://www.somanuals.com>

<http://www.4manuals.cc>

<http://www.manual-lib.com>

<http://www.404manual.com>

<http://www.luxmanual.com>

<http://aubethermostatmanual.com>

Golf course search by state

<http://golfingnear.com>

Email search by domain

<http://emailbydomain.com>

Auto manuals search

<http://auto.somanuals.com>

TV manuals search

<http://tv.somanuals.com>