

BIRTH +
06562

PLAYSKOOL[®]

Gloworm[™]

Slumbertime Soother[™]

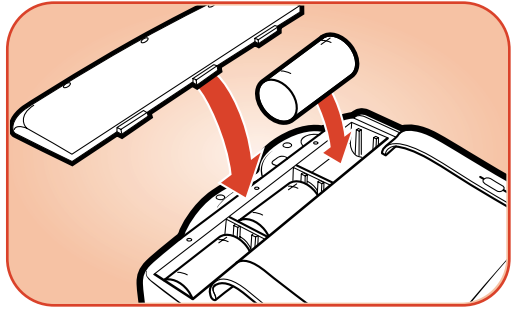
Thank you for purchasing this lovable friend!

Requires 3 x 1.5V "D"/LR20 alkaline batteries (not included). Phillips/crosshead screwdriver (not included) required for battery installation.



TO INSTALL BATTERIES

Using a Phillips/cross head screwdriver, loosen screws in battery cover (screw will remain attached to cover). Insert 3 fresh 1.5V "D"/LR20 alkaline batteries into battery compartment. Replace cover and retighten screws.



CAUTION: TO AVOID BATTERY LEAKAGE

1. Be sure to insert the batteries correctly and always follow the toy and battery manufacturers' instructions;
2. Do not mix old and new batteries or alkaline, standard (carbon-zinc) or rechargeable (nickel-cadmium) batteries;
3. Always remove weak or dead batteries from the product.

IMPORTANT: BATTERY INFORMATION

Please retain this information for future reference.

Batteries should be replaced by an adult.

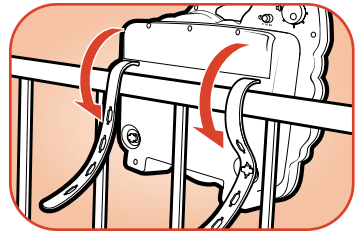
CAUTION:

1. Always follow the instructions carefully. Use only batteries specified and be sure to insert them correctly by matching the + and - polarity markings.
2. Do not mix old batteries and new batteries or standard (carbon-zinc) with alkaline batteries.
3. Remove exhausted or dead batteries from the product.
4. Remove batteries if product is not to be played with for a long time.
5. Do not short circuit the supply terminals.
6. Should this product cause, or be affected by, local electrical interference, move it away from other electrical equipment. Reset (switching off and back on again or removing and re-inserting batteries) if necessary.
7. RECHARGEABLE BATTERIES: Do not mix these with any other types of battery. Always remove from the product before recharging. Recharge batteries under adult supervision. **DO NOT RECHARGE OTHER TYPES OF BATTERIES.**

TO ATTACH TO CRIB

⚠ CAUTION: When toy is used in crib, the crib sides should be raised and the crib mattress should be in one of the lower positions.

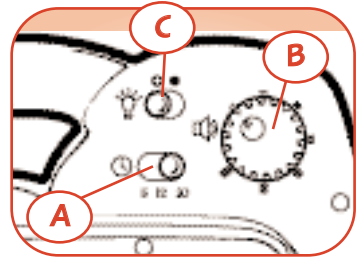
1. Position toy inside crib near top rail.
2. Place straps around top crib rail, and, with toy firmly in place, fit tabs on toy through holes in straps.



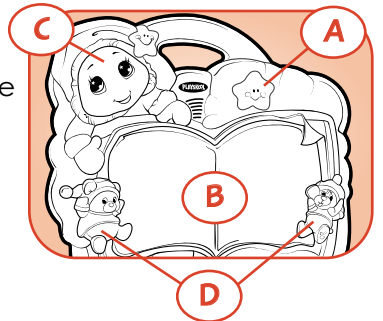
TO USE

This soothing crib or table-top toy eases baby's transition to bedtime with colorful moving images and comforting lullaby music.

- Choose the settings!
 - A **Music Timer**. Slide switch to select the length of time the music plays.
 - B **Variable Volume Control**. Turn knob to adjust volume of music.
 - C **Light Switch**. Switch in ON position allows light-up features to work when music plays. For music only, slide switch to OFF to shut off light-up features.



- A Press the yellow star to set the fun in motion!
- B Friendly, nighttime images scroll across the glowing "pages"!
- C Your GLOWORM friend lights up! 6 soothing lullabies to calm and comfort baby!
- D L'I'L GLOFRIENDS characters light up and giggle...press the bookmark to see!

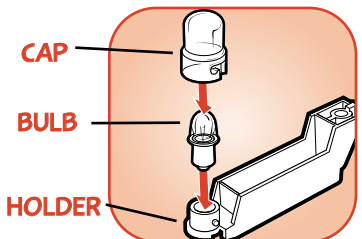
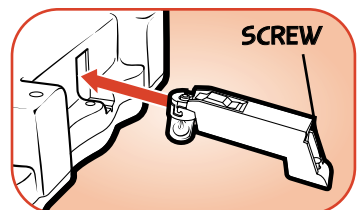


TO REPLACE LIGHT BULB

PR-3 bulb required.

(Light bulb should be replaced by an adult.)

1. On back of toy, loosen screw that attaches light bulb cover to toy (screw will remain attached to toy).
2. Slide light bulb holder out of cover.
3. Twist light bulb cap and remove from holder.
4. Discard old bulb and replace it with a new PR-3 light bulb.
5. Twist cap onto holder, slide holder into toy and tighten screw.



FCC STATEMENT

This equipment has been tested and found to comply with the limits for a Class B digital device, pursuant to part 15 of the FCC Rules. These limits are designed to provide reasonable protection against harmful interference in a residential installation. This equipment generates, uses and can radiate radio frequency energy, and, if not installed and used in accordance with the instructions, may cause harmful interference to radio communications. However, there is no guarantee that interference will not occur in a particular installation. If this equipment does cause harmful interference to radio or television reception, which can be determined by turning the equipment off and on, the user is encouraged to try to correct the interference by one or more of the following measures:

- Reorient or relocate the receiving antenna.
- Increase the separation between the equipment and the receiver.
- Consult the dealer or an experienced radio/TV technician for help.

At Playskool, we want to do all we can to help ensure that children thrive developmentally. That's why we have partnered with the National Campaign for Hearing Health to provide you with this Hearing Checklist for babies.

Your Baby's Hearing Checklist

Provided by
National Campaign for Hearing Health
1050 17th Street NW, Suite 701
Washington, DC 20036



Talk to your doctor if you answer NO to any of these questions:

- | YES | NO | Birth to 3 Months |
|--------------------------|--------------------------|----------------------------------------------------|
| <input type="checkbox"/> | <input type="checkbox"/> | Reacts to loud sounds |
| <input type="checkbox"/> | <input type="checkbox"/> | Is soothed by your voice |
| <input type="checkbox"/> | <input type="checkbox"/> | Turns head to you when you speak |
| <input type="checkbox"/> | <input type="checkbox"/> | Seems to know your voice and quiets down if crying |

- | YES | NO | 3 to 6 Months |
|--------------------------|--------------------------|------------------------------------------------|
| <input type="checkbox"/> | <input type="checkbox"/> | Looks upward or turns toward a new sound |
| <input type="checkbox"/> | <input type="checkbox"/> | Responds to "no" and changes in tone of voice |
| <input type="checkbox"/> | <input type="checkbox"/> | Enjoys rattles and other toys that make sounds |
| <input type="checkbox"/> | <input type="checkbox"/> | Becomes scared by a loud voice |

The National Campaign for Hearing Health is sponsored by the Deafness Research Foundation. It is a public outreach, professional education and government relations initiative whose goal is to educate the public about hearing health.

Call the National Campaign for Hearing Health at **1.800.535.3323** or visit www.hearinghealth.net for more information.

Based on NIDCD/NIH infant hearing checklist.



Free Manuals Download Website

<http://myh66.com>

<http://usermanuals.us>

<http://www.somanuals.com>

<http://www.4manuals.cc>

<http://www.manual-lib.com>

<http://www.404manual.com>

<http://www.luxmanual.com>

<http://aubethermostatmanual.com>

Golf course search by state

<http://golfingnear.com>

Email search by domain

<http://emailbydomain.com>

Auto manuals search

<http://auto.somanuals.com>

TV manuals search

<http://tv.somanuals.com>