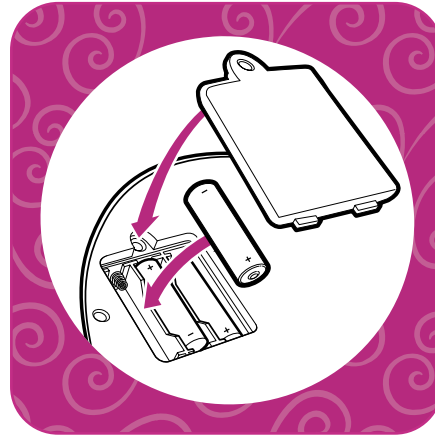


TO INSTALL BATTERIES

To replace batteries: Loosen screw in battery compartment door, and remove door. Discard exhausted batteries, and insert 3 fresh "AAA"/LR3 alkaline batteries. Replace door and tighten screw.

! CAUTION:

- 1) As with all small batteries, the batteries used with this toy should be kept away from small children who still put things in their mouths. If they are swallowed, promptly see a doctor, and, in the U.S., have the doctor phone (202) 625-3333 collect, or, in Canada, call your provincial Poison Control Center.
- 2) Make sure the batteries are inserted correctly and follow the toy and battery manufacturers' instructions.
- 3) Do not mix old and new batteries, alkaline, standard (carbon-zinc) or rechargeable (nickel-cadmium) batteries.



FCC STATEMENT

This equipment has been tested and found to comply with the limits for a Class B digital device, pursuant to part 15 of the FCC Rules. These limits are designed to provide reasonable protection against harmful interference in a residential installation. This equipment generates, uses and can radiate radio frequency energy, and, if not installed and used in accordance with the instructions, may cause harmful interference to radio communications. However, there is no guarantee that interference will not occur in a particular installation. If this equipment does cause harmful interference to radio or television reception, which can be determined by turning the equipment off and on, the user is encouraged to try to correct the interference by one or more of the following measures:

- Reorient or relocate the receiving antenna.
- Increase the separation between the equipment and the receiver.
- Consult the dealer or an experienced radio/TV technician for help.



Not suitable for children under 36 months due to small parts, choking hazard.

©Disney
*®, *™ & © 2002 Hasbro. All Rights Reserved.
® denotes Reg. U.S. Pat. & TM Office
10119 PN 6156930000



Download from Www.Somanuals.com. All Manuals Search And Download.

AGES 4+

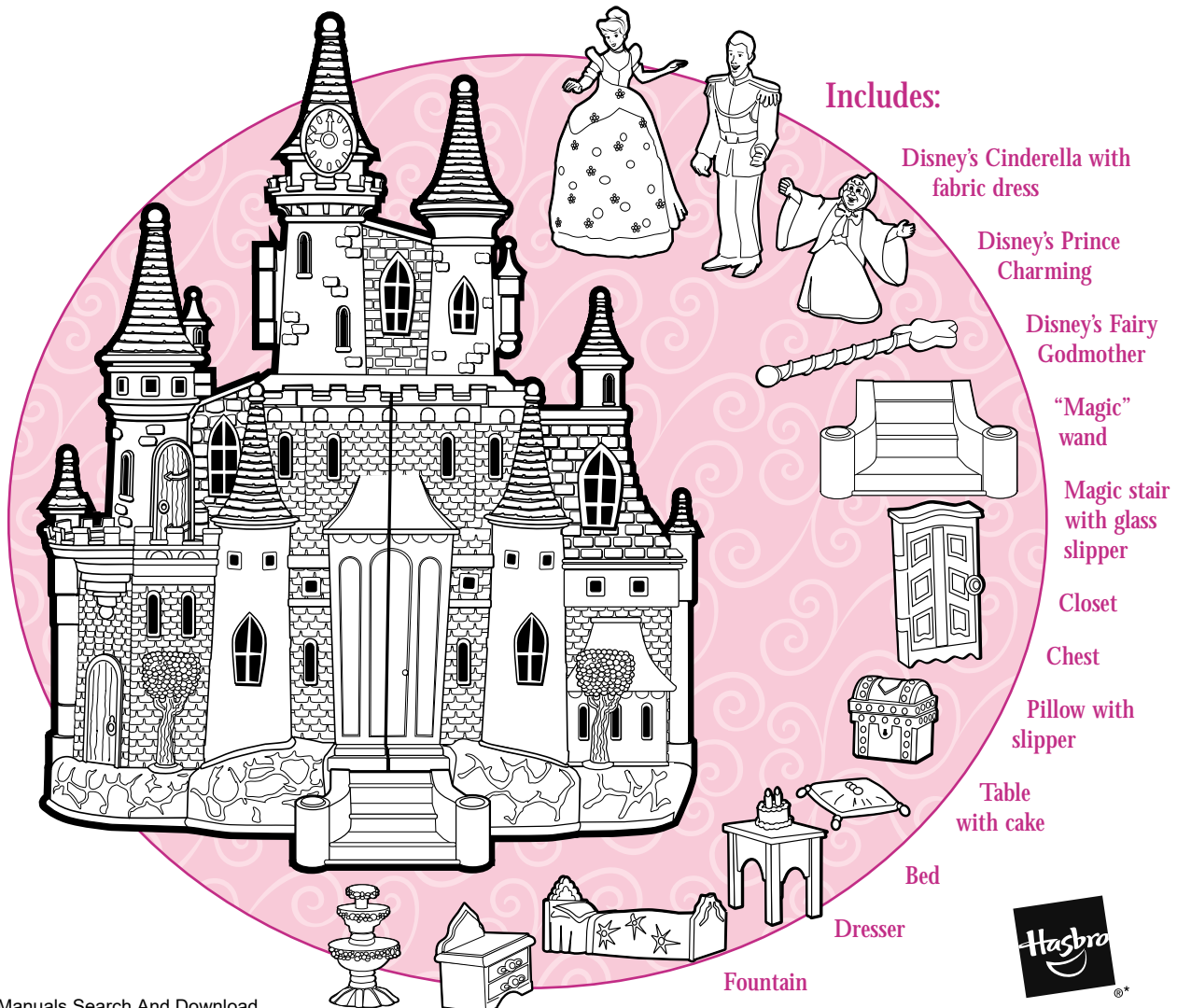
10119

Disney's Cinderella Musical Castle

Thank you for choosing this Disney Princess toy! For maximum play value, be sure to read and follow instructions.

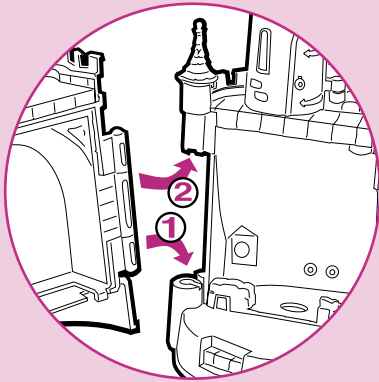
Includes: 3 "AAA"/LR3 Phillips screwdriver (not included) required to replace batteries.

! WARNING:
CHOKING HAZARD - Small parts.
Not for children under 3 years.

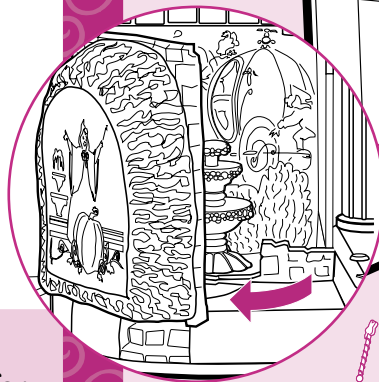


ASSEMBLY

Fit door hinges into grooves as shown.



To remove plastic insert from dance floor, squeeze tabs and pull out.



Castle closes and accessories fit inside for storage. Rotate dance platform to back before closing playset.

PLAY TIME



Cinderella and Prince fit inside turret hiding places



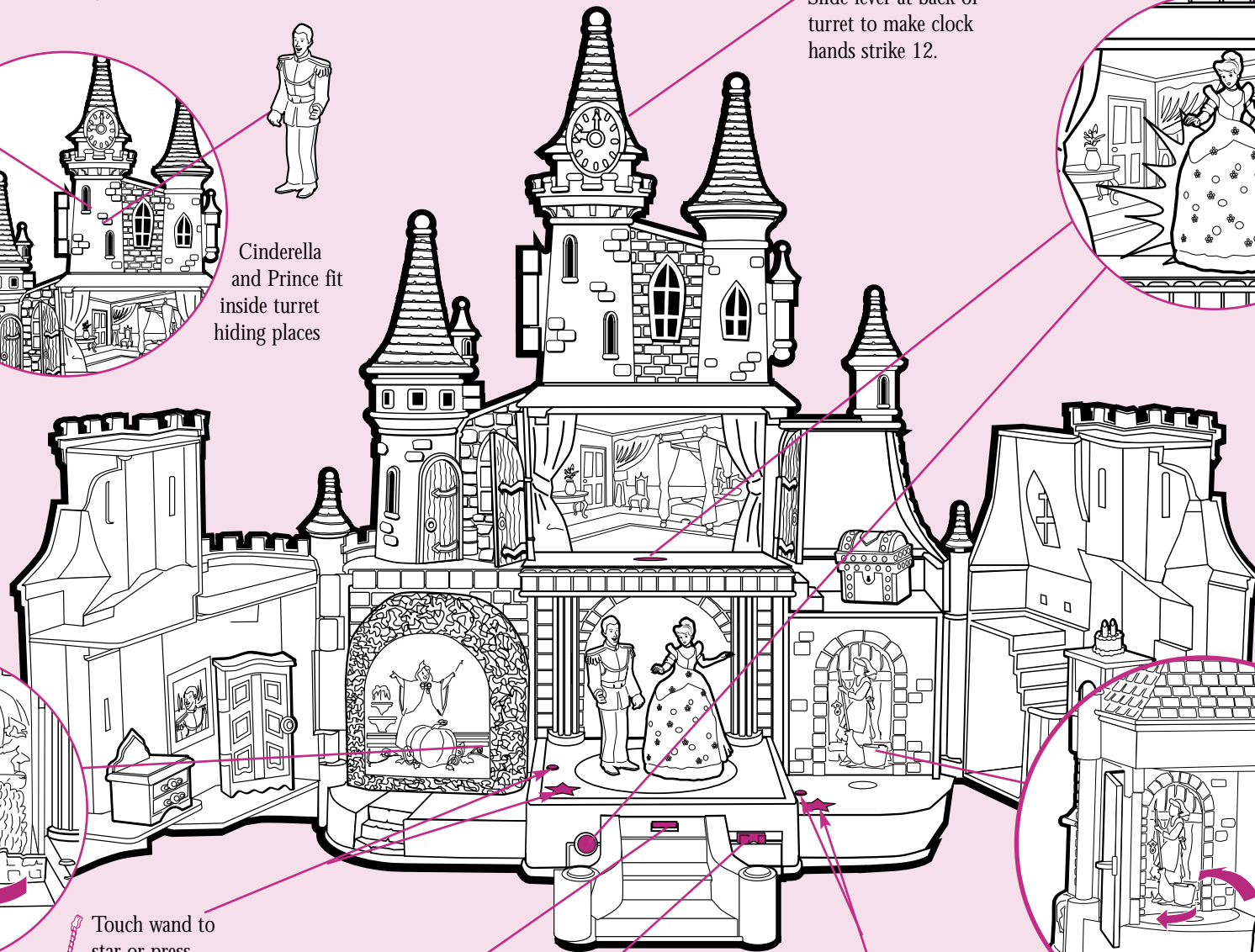
Slide lever at back of turret to make clock hands strike 12.



Place Cinderella on platform. Press button to activate dance music and "twinkling" gown.



Hidden magnet inside wand activates "magical" features!



Touch wand to star or press button to reveal carriage. **Note:** If you lose wand button activates carriage reveal.

Move lever on top step to make the slipper appear and disappear.

Insert Cinderella and Prince Charming on dance platform. Music plays and Cinderella "dances" when wheel is turned.

REVOLVING DOOR (front): Touch wand to star or press button to activate revolving door. **Note:** To activate rotating door feature, turn door so that Cinderella with mop faces front.

REVOLVING DOOR (back): Open secret back door and place figure inside. Cinderella rides around into front of castle when revolving door is activated.



Free Manuals Download Website

<http://myh66.com>

<http://usermanuals.us>

<http://www.somanuals.com>

<http://www.4manuals.cc>

<http://www.manual-lib.com>

<http://www.404manual.com>

<http://www.luxmanual.com>

<http://aubethermostatmanual.com>

Golf course search by state

<http://golfingnear.com>

Email search by domain

<http://emailbydomain.com>

Auto manuals search

<http://auto.somanuals.com>

TV manuals search

<http://tv.somanuals.com>