

## WinTV-HVR-4000 WinTV-NOVA-HD-S2 Quick Installation Guide for Windows XP / Vista 32-bit

© 2007 Hauppauge Computer Works · QI-WINTV-SC-V1.1-ENG · 2007/06/25

**Hauppauge Computer Works, Ltd.** Tech Support: (+44) 0207 378 0202  
10 Borough High Street Telephone: (+44) 0207 378 1997  
Bank Chambers Fax: (+44) 0207 357 9171  
London, UK, SE1 9QQ  
www.hauppauge.co.uk

**Hauppauge Computer Works, Inc.** Tech Support: (+1) 631 434 3197  
91 Cabot Court Telephone: (+1) 631 434 1600  
Hauppauge, NY 11788 Fax: (+1) 631 434 3198  
www.hauppauge.com

**Hauppauge Digital Asia, Pte. Ltd.** Tech Support: (+65) 276 4412  
Blk 1093, Lower Delta Road #04-05 Telephone: (+65) 276 9163  
Tiong Bahru Industrial Estate Fax: (+65) 276 9167  
Singapore 169204  
www.hauppauge.com.sg

### 1. Contents of the WinTV-package

- WinTV-HVR-4000 or WinTV-NOVA-HD-S2 PCI board
- Remote control transmitter with 2 AAA batteries
- Remote control receiver with velcro dot fastener
- FM Radio antenna (WinTV-HVR-4000 only)
- S-Video/Composite Adapter (WinTV-HVR-4000 only)
- Installation CD-ROM with:
  - CyberLink PowerCinema 5.1



### 2. Installing the WinTV-board

**Note:** Your PC could be damaged by electrostatic discharge. Avoid this by contacting the earthed chassis of your PC, before you open it or touch the PCI card.

To install, switch off the computer and remove the computer cover. The manufacturer of your PC supplies instructions on removing the PC cover.

- Locate a free PCI slot (a short white slot). Unscrew and remove the metal cover plate which covers the back of the empty slot.
- Plug the WinTV board into the PCI slot, and screw the WinTV metal cover plate to the PC.

### 3. Connections of the WinTV-board

#### WinTV-HVR-4000

With the HVR you can watch and record analog TV, DVB-Terrestrial, DVB-Satellite and DVB-S2 HD channels. You can also connect sources via the composite and S-Video inputs and listen to FM Radio as well.

You can now connect the leads provided to the WinTV-HVR-4000 in the following order.

- |                   |  |
|-------------------|--|
| <b>FM</b>         | FM Radio-Antenna                                   |
| <b>TV</b>         | TV-Antenna   |
| <b>SAT</b>        | SAT-Cable from the LNB of your satellite dish      |
| <b>S-VIDEO IN</b> | S-Video-Input *                                    |
| <b>LINE IN</b>    | Stereo-Audio-Input, from the output of your source |
| <b>IR</b>         | Input for the Infra-red-Sensor                     |

**Note:** for using a RCA Yellow Phono composite input you must use the supplied S-Video to composite adapter.

#### WinTV-NOVA-HD-S2

With the WinTV-NOVA-HD-S2 you can watch and record DVB-Satellite and DVB-S2 HD channels.

You can now connect the leads provided to the WinTV-NOVA-HD-S2 in the following order.

- |            |   |
|------------|---|
| <b>SAT</b> | SAT-Cable from the LNB of your satellite dish |
| <b>IR</b>  | Input for the Infra-red-Sensor                |

### 4. WinTV DVB reception advice

#### DVB-T (WinTV-HVR-4000 only)

Please ensure that you have a suitable TV aerial connected to the WinTV card. You should then ensure you are located in an area that supports Digital Terrestrial TV by visiting: [www.dtg.org.uk/retailer/coverage.html](http://www.dtg.org.uk/retailer/coverage.html) and entering your post code. If your area does have digital Terrestrial TV coverage, please check your TV antenna as most antenna's that are over 8 years old may not support the Digital Terrestrial TV broadcasts and you may need to update yours to a 'Wideband or Highgain' antenna.

#### DVB-S/DVB-S2

Please ensure that your satellite dish is correctly aligned and the Sat cable is connectly directly from the LNB and not via a set top box.

### 5. Install the WinTV Windows driver

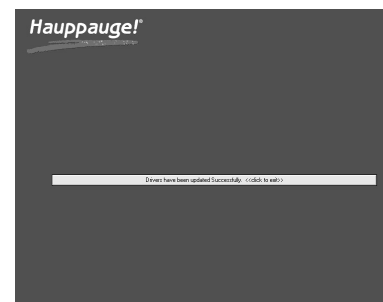
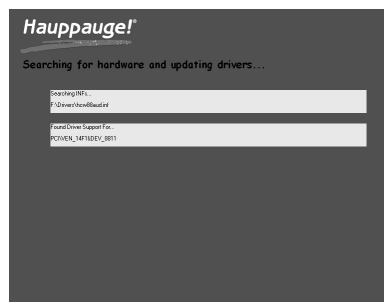
**Note:** If you have any anti-virus software enabled, please disable it during the installation of the software.

Start your computer, the **Found New Hardware Wizard** will appear, Click on **Cancel**.



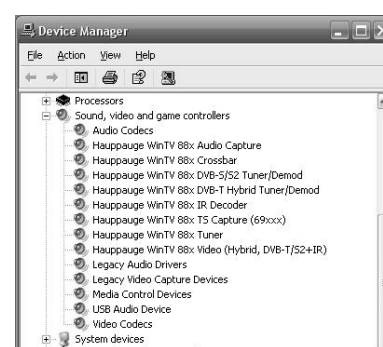
Insert your WinTV Installation CD-ROM and click on **Start** then **Computer**, you should then see the HCW3\_x CD, double click on this CD-ROM then double click on the file called **HCWDriverInstall**.

You will then be presented with a blue screen which will begin installing and updating the drivers for your product.



You will now need to check that the drivers are installed correctly. Right Click on **My Computer** and Left Click on **Properties**.

Click on **Hardware** tab and then **Device Manager**. In the Device Manager click on the + symbol on the **Sound Video and Game controllers** section. If the driver is installed correctly you should see the **Hauppauge WinTV**.



If any of them have a yellow exclamation mark, follow this procedure:

1. Close Device Manager
2. On the Hauppauge Installation CD-ROM double click on the file called **HCWclear.exe** and select the last 2 options and click on **OK**.
3. Once the black screen has closed down, re-start the computer and continue from page 3 above or contact our technical support department.

### 6. CyberLink Software Installation

To start the software installation, click **Start / Run** then type your **CD-ROM drive letter** (for example: D:\) and then **Setup.exe**.

Click **Next** and follow the on screen instructions to install the software.



Once the installation is complete, please re-start your computer.

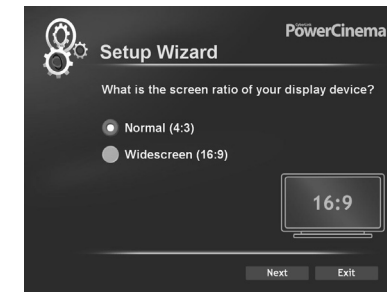
### 7. CyberLink PowerCinema

To start the PowerCinema application double click on the **CyberLink PowerCinema Icon** on your desktop or click on **Start / All Programs / CyberLink PowerCinema / PowerCinema**.

The Setup Wizard will appear which will guide you through the setup and configuration of the application, click **Next**.



Select the type of screen that you are using (4:3 is normal TV / Monitor screen size and 16:9 is a widescreen TV / Monitor) and click **Next**.



Select the type of speaker setup that you are using and click **Next**.



PowerCinema detect the TV tuners.

The **WinTV-HVR-4000** has a Hybrid tuner and can be configured for all types of signals:

1. Analogue (Cable TV and Antenna)
2. DVB-T (Digital Terrestrial)
3. DVB-S (Digital Satellite) and DVB-S2 (Digital Satellite HD)

In addition you can also connect a composite or S-Video source (Hi-8 camcorder, VCR, cable or satellite box).

The **WinTV-NOVA-HD-S2** has a HD satellite tuner and can be configured for DVB-S (and HD DVB-S2) only.

You need to ensure that you have connected the cables correctly before performing a channel scan.

You can configure or change the signal input by selecting **Settings / TV / Signal** settings.



Select the region that you are located in and click **Next**.



Select the signal type that you want to configure and click **Next**.

Scanning for DVB-S channels will also scan for HD DVB-S2 channels. Select the location where you want to save recorded TV files and click **Next**.



#### TV Setup (WinTV-HVR-4000 only)

If you have a cable system connected click on **Scan Channels**, if you do not then click **Next** and Scan Channels for scanning TV antenna channels.



Once the channel scan is finished click on **Next**.



#### Digital DVB-T Setup (WinTV-HVR-4000 only)

Select **Scan Channels** to start the channels scan. When complete click on **Next**.



The DVB-T EPG allows you to view now and next channel program information, refer to the online help for more information. Click on **Next**.



## Digital DVB-S / DVB-S2 TV Setup

Select Scan channels.



Select the number of satellites that you are using. In most situations in the UK there will only be 1 satellite position, as your satellite dish will only have 1 LNB.

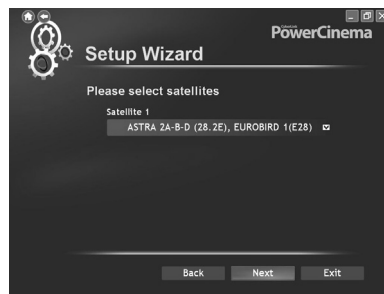
Click **Next**.



Select the satellite that your dish is pointing to from the satellite list. In the UK the 2 most common satellite positions are:

ASTRA 2A-B-D, Eurobird 1(E28) and ASTRA 1C, 1E, 1F, 1G, 1H, 1KR, 2C (E19)

For a SKY satellite dish position select ASTRA 2A-B-D, Eurobird 1 and select Next.



When the channel scan is complete click on **Next** to continue.



The DVB-S EPG allows you to view now and next channel program information, refer to the online help for more information.



PowerCinema detect the Radio tuners.

There is one FM tuner on the WinTV-HVR-4000, click **Next** to continue.



Select the location where you want to save the recorded files and click **Next**.



You can now scan for FM radio channels by clicking on the select tuner to scan stations.



Once the Radio scan is complete click on **Next** to continue.



You can search your computer for available music files that will be added to a play list by selecting search now, click **Next** to continue.



The Setup Wizard is now finished, complete the product registration and click **Next** to terminate.



**Note:** CyberLink PowerCinema is a function-rich Media Center software. You can use it for the playing of music, video, DVD's and TV shows. Please refer the user manual, which you find on the CD-ROM in electronic form.

## 8. Installing the Remote Control software

The remote control software is installed automatically during the installation of the WinTV applications.

You will see the WinTV Remote icon in the Device Tray. The installation will add a shortcut to **IR.EXE** to the Startup group, so that **IR.EXE** is loaded every time after Windows has booted.

If you need to restart the remote control, select **Restart IR** from the **Start \ All Program Files \ WinTV directory**.

Please ensure the following before trying to use this option:

1. Infrared Remote control - Has batteries inserted
2. Infrared-Receiver, is fully connected to the IR socket of the WinTV-Card

3. Infrared software is started - The IR icon is on the start bar

To start the PowerCinema press the **GO** button. Use the scroll up and down button to select PowerCinema and press **OK** to select.

### Button of the Remote control

- | Button             | Function   |
|--------------------|--|
| <b>Go:</b>         | Open PowerCinema   |
| <b>Power:</b>      | Close PowerCinema  |
| <b>TV:</b>         | Display TV Menu  |
| <b>Videos:</b>     | Display Video Menu   |
| <b>Music:</b>      | Display Music Menu   |
| <b>Pictures:</b>   | Display Pictures Menu  |
| <b>Guide:</b>      | Display EPG program guide (If configured)  |
| <b>Radio:</b>      | Display Radio menu   |
| <b>OK:</b>         | Confirm selection  |
| <b>Back/Exit:</b>  | Exit the Menu  |
| <b>Menu:</b>       | No function  |
| <b>Vol:</b>        | Volume up/down   |
| <b>Prev. Ch:</b>   | Select the previous channel  |
| <b>Mute:</b>       | Sound on/off   |
| <b>Ch:</b>         | Select the next channel  |
| <b>REC:</b>        | Start a recording  |
| <b>Stop:</b>       | Stop a recording; Exit pause mode  |
| <b>&lt;&lt;:</b>   | Rewind   |
| <b>Play:</b>       | Start playing  |
| <b>&gt;&gt;:</b>   | Forward  |
| <b>Pause:</b>      | Start Pause-Mode (Timeshift)   |
| <b>Skip:</b>       | Skip ahead (x2/x 4/x8)   |
| <b>0-9:</b>        | Channel number   |
| <b>text (*):</b>   | Display teletext pages   |
| <b>Sub/CC:</b>     | Display sub-titles (If available)  |
| <b>Color Keys:</b> | These keys related to the options available on the teletext page that you have selected. |



## 9. Troubleshooting

### To uninstall the Driver and Software

To uninstall the software simply run the hcwclear.exe off the Hauppauge installation CD-ROM and select the last 1 option and the entry "search all INF files etc". If you now select "OK" a black screen will briefly appear and once it has disappeared the software will be removed. If you now re-start the computer you will be at Step 5 on page 2 of this document and can now re-install the software.

### "Error code 10" during installation

This is caused by a failure to load the WinTV drivers. Uninstall the software (as above) and then follow the instructions from step 5. If this still gives you an error message move the WinTV to a different PCI slot and re-install the drivers again.

### Only some channels are found during DVB-T channel scan

Ensure that your antenna is capable of receiving Digital terrestrial transmission (Most rooftop/loft antenna under 8 years old may work). You can enter your postcode at this website address:

[www.dtg.org.uk/retailer/coverage.html](http://www.dtg.org.uk/retailer/coverage.html) as this will show you what services are available in your area.

You can then enter your postcode at this website:

[www.bbc.co.uk/reception/transmitters/today.shtml](http://www.bbc.co.uk/reception/transmitters/today.shtml) to see if there is any engineering work being carried out on your transmitter as this could affect the reception of some channels.

### Only some channels are found during the DVB-S / S2 channel scan

Please ensure that your satellite dish is aligned correctly and then start the PowerCinema application and go to:

**Settings / TV / Signal Settings / Manage Channels / Add New Channel**

You can now enter the satellite and channel information for station that is missing.

If you do not know this information then visit [Http://www.lyngsat.com](http://www.lyngsat.com) and select the location (e.g. Europe), where you can find the satellite information that will be used for the channel scan, for example:

BBC HD is on Europe / Astra 28.2 East (2A/2B/2D)

Transponder freq = 10847

Symbol rate = 22000

Polarization = Verticle

FEC Rate = 5 / 6

Modulation = QPSK

Pilot = On

Roll-Off = 0.35

**Note:** If you are searching for a DVB-S2 channel the Modulation = 8PSK

## FCC Statement

### Radio Interference Statement:

The WinTV boards have been tested and found to comply with the limits for a Class B digital device, pursuant to part 15 of the FCC Rules. These limits are designed to provide reasonable protection against harmful interference in a residential installation. This equipment generates, uses, and can radiate radio frequency energy and cause harmful interference to radio communications. However, there is no guarantee that interference will not occur in a particular installation. If this equipment does cause harmful interference to radio or television reception, which can be determined by turning the equipment off and on, the user is encouraged to try to correct the interference by one or more of the following measures:

- reorient or relocate the receiving antenna.
- increase the separation between the equipment and receiver.
- connect the equipment into an outlet on a circuit different from that to which the receiver is connected.
- consult the dealer or an experienced radio/TV technician for help.

**FCC ID:** H90WINTV

**CAUTION:** Changes or modifications not expressly approved by the party responsible for compliance to the FCC Rules could void the user's authority to operate the equipment.

**CE Statement:** This equipment has been tested and complies with EN 55013, EN 55020 and IEC 801-3 part 3 standards.

## Waste Electrical and Electronic Equipment (WEEE)

The device may not be disposed of with household rubbish. This appliance is labeled in accordance with European Directive 2002/96/EG concerning used electrical and electronic appliances (Waste Electrical and Electronic Equipment - WEEE). The guideline determines the framework for the return and recycling of used appliances as applicable throughout the EU. To return your used device, please use the return and collection systems available to you.

## Free Manuals Download Website

<http://myh66.com>

<http://usermanuals.us>

<http://www.somanuals.com>

<http://www.4manuals.cc>

<http://www.manual-lib.com>

<http://www.404manual.com>

<http://www.luxmanual.com>

<http://aubethermostatmanual.com>

Golf course search by state

<http://golfingnear.com>

Email search by domain

<http://emailbydomain.com>

Auto manuals search

<http://auto.somanuals.com>

TV manuals search

<http://tv.somanuals.com>