

INSTALLATION INSTRUCTIONS KK-K9-D22-K

K-9 TRANSPORTATION KIT

2005-2008 DODGE MAGNUM

TOOLS REQUIRED:

Power Drill	Screwdriver Set (Cordless powered)
Drill Bit Set	Wire cutters
Standard Wrench Set	Wire Strippers
Standard & Metric Socket Set	Crimping tool
Ratcheting Wrench	Caulking gun

HARDWARE:

<u>QTY:</u>	<u>DESCRIPTION:</u>	<u>USED FOR:</u>	<u>PART #:</u>
8	#10 x 3/4" Stainless flat head screw	Door Panel (top lip)	GSM34151
32	#10 x 3/4" Stainless sheet metal screw	Door Panel	GSM34170
40	#10 x 1/2" Stainless sheet metal screw	Fillers/Step sill	GSM34169
8	#10 x 1/2" Stainless flat head screw	Window guard hinge	GSM34150
29	1/4-20 x 1/2" Stainless carriage bolt	Basic unit assembly	GSM32022
44	1/4-20 Serrated nut	Basic unit assembly	GSM30023
7	1/4-20 x 3/4" Stainless carriage bolt	Lexan filler	GSM32024
8	1/4-20 x 3/4" Hex head bolt	Front cage bracket	GSM33001
4	1/4" x 3/4" Hex head lag bolt	Front cage bracket	GSM33060-1
1	Tube silver silicone	Sealant	PRM97343
3	#10 x 3/4 Sheet metal screw	Dome light	GSM33195

COMPONENTS:

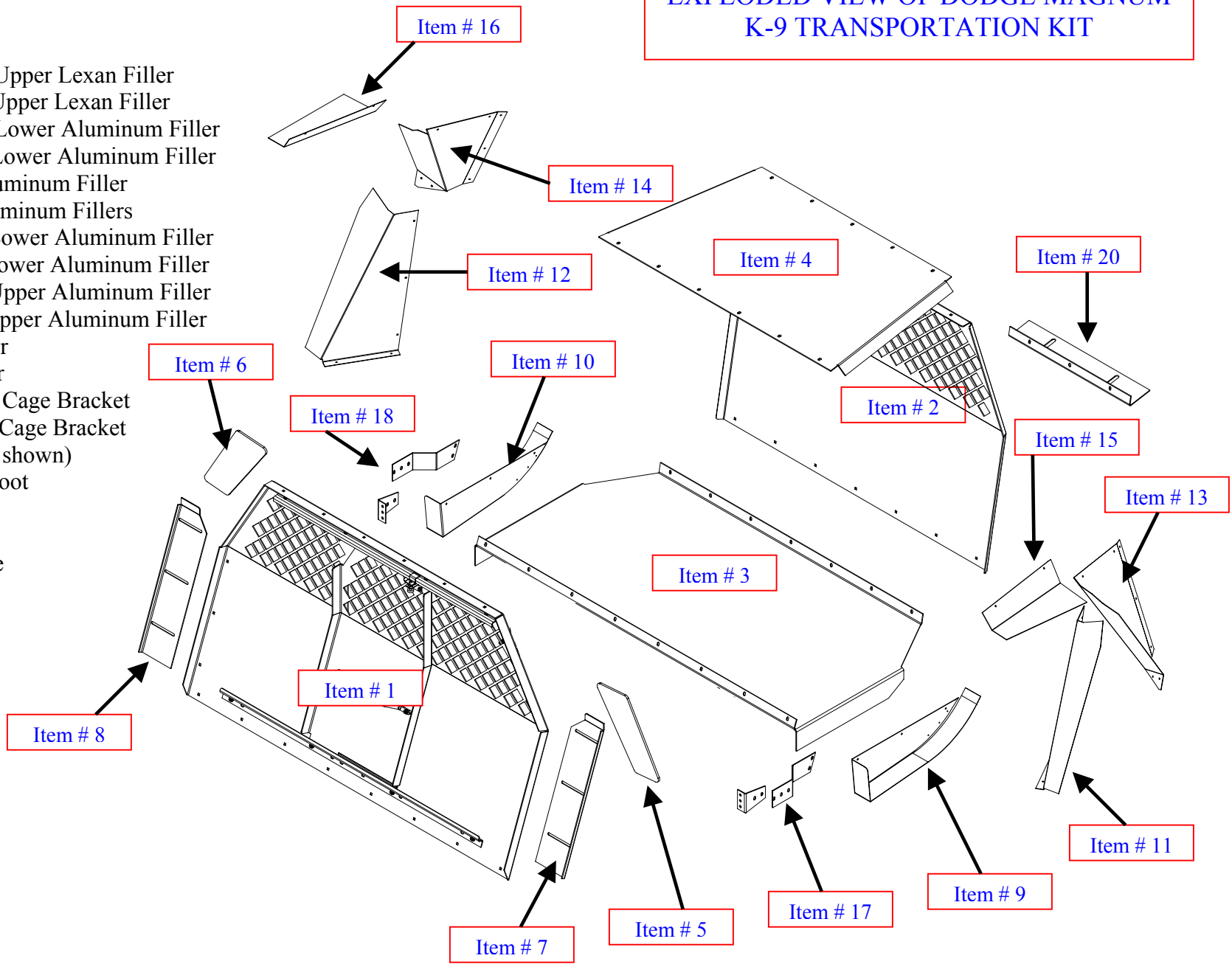
<u>QTY:</u>	<u>DESCRIPTION:</u>
1	Front Cage
1	Rear Cage
1	Floor
1	Ceiling
2	Front Cage Upper Lexan Fillers
2	Front Cage Lower Aluminum Fillers
2	Step Sill Aluminum Fillers
2	Rear Cage Lower Aluminum Fillers
2	Rear Cage Upper Aluminum Fillers
2	Aluminum Ceiling Fillers
2	(2-pc) Front Cage Brackets
2	Aluminum Door Panels
2	Hinging Window Guards w/brackets
1	Dome Light Kit
1	Rubber Mat
1	Rear-Mounting Foot

Description

1. Front Cage
2. Rear Cage
3. Floor
4. Ceiling
5. D.S Front Cage. Upper Lexan Filler
6. P.S. Front Cage Upper Lexan Filler
7. D.S. Front Cage Lower Aluminum Filler
8. P.S. Front Cage Lower Aluminum Filler
9. D.S. Step Sill Aluminum Filler
10. P.S. Step Sill Aluminum Fillers
11. D.S. Rear Cage Lower Aluminum Filler
12. P.S. Rear Cage Lower Aluminum Filler
13. D.S. Rear Cage Upper Aluminum Filler
14. P.S. Rear Cage Upper Aluminum Filler
15. D.S. Ceiling Filler
16. P.S. Ceiling Filler
17. D.S (2-pc). Front Cage Bracket
18. P.S. (2-pc) Front Cage Bracket
19. Rubber Mat (Not shown)
20. Rear-Mounting Foot

D.S. = Driver Side
P.S. = Passenger Side

**EXPLODED VIEW OF DODGE MAGNUM
K-9 TRANSPORTATION KIT**

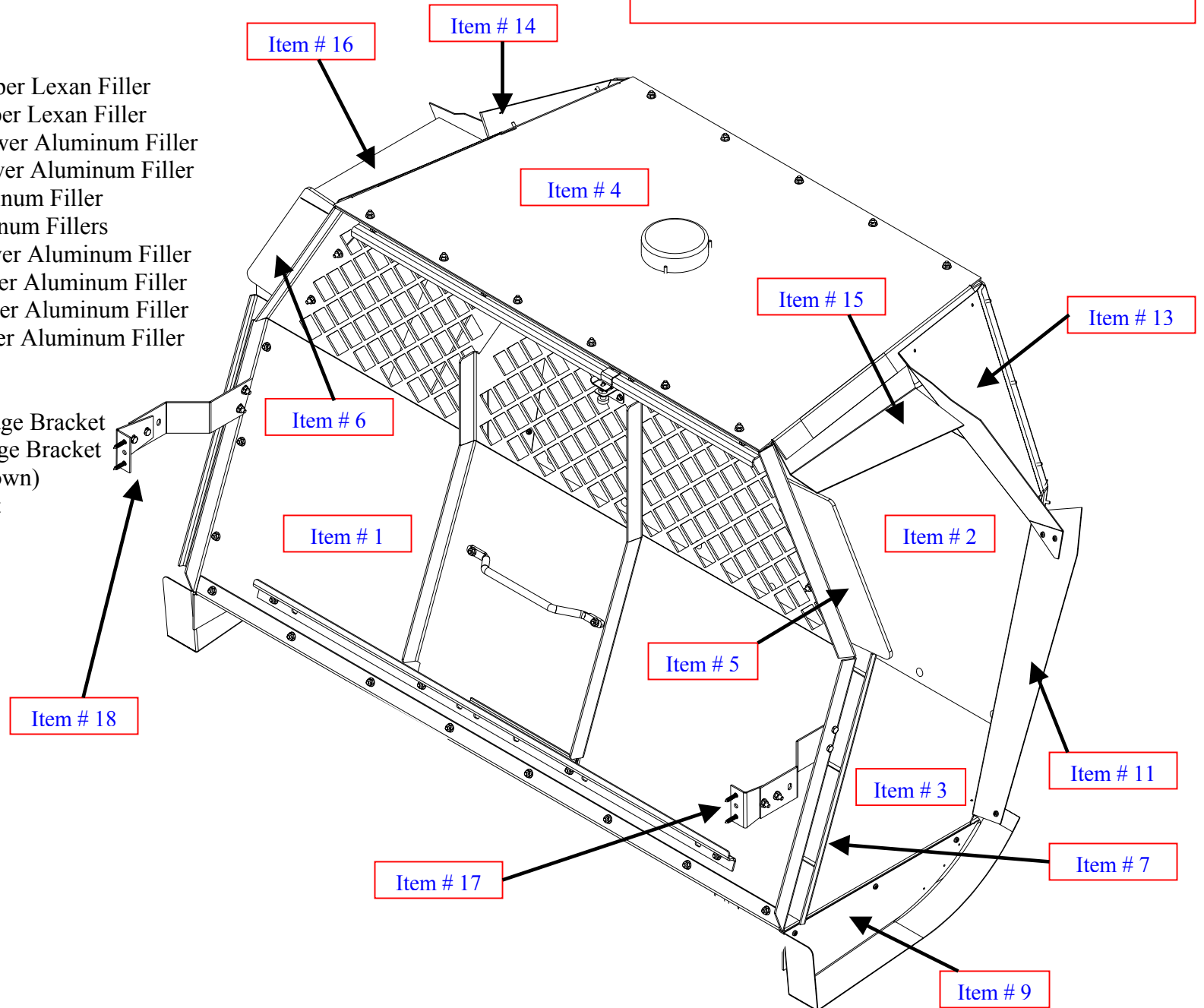


Description

1. Front Cage
2. Rear Cage
3. Floor
4. Ceiling
5. D.S Front Cage. Upper Lexan Filler
6. P.S. Front Cage Upper Lexan Filler
7. D.S. Front Cage Lower Aluminum Filler
8. P.S. Front Cage Lower Aluminum Filler
9. D.S. Step Sill Aluminum Filler
10. P.S. Step Sill Aluminum Fillers
11. D.S. Rear Cage Lower Aluminum Filler
12. P.S. Rear Cage Lower Aluminum Filler
13. D.S. Rear Cage Upper Aluminum Filler
14. P.S. Rear Cage Upper Aluminum Filler
15. D.S. Ceiling Filler
16. P.S. Ceiling Filler
17. D.S (2-pc). Front Cage Bracket
18. P.S. (2-pc) Front Cage Bracket
19. Rubber Mat (not shown)
20. Rear-Mounting Foot

D.S. = Driver Side
P.S. = Passenger Side

**ASSEMBLED VIEW OF DODGE
MAGNUM K-9 TRANSPORTATION KIT**



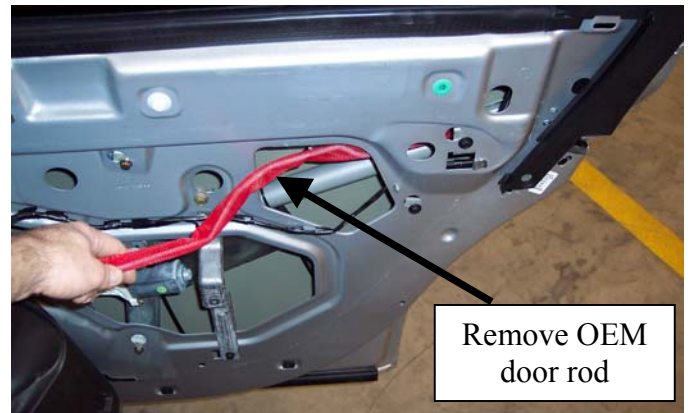
KK-K9-D22-K_INST_9-07

Always!

- Read all instructions before installing any Havis-Shields Equipment Corp products.
- Check for obstructions (Wire, brake lines, fuel tank, etc.) before drilling any holes!
- Use hardware provided with install kit

TIPS FOR INSTALLATION:

- Cordless drill with Phillips screw bit is recommended to help speed up installation time.
- Rear and ceiling fillers as well as step sill may require you to apply pressure when attaching them to the cage. This will aid in achieving a clean tight fit and may require two installers during these steps.
- PVC protective covering should be removed during installation. Peeling it back while attaching hardware.



SUB ASSEMBLIES:

1. Remove necessary interior trim parts:

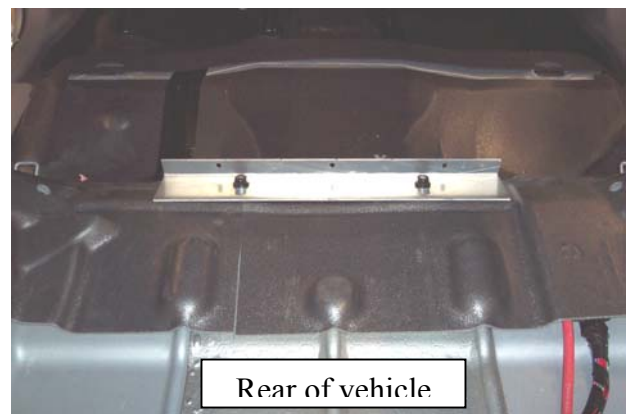
- Remove rear seat
- Remove OEM door panels.

Note: if the door has an electric lock system and/or window controls, the switches must be reconnected. The switch assembly must be wire tied to inner door panel and placed inside a plastic bag so, as not to interfere with the window or lock mechanisms.

- Remove OEM door lock pin assembly
- Remove OEM step sill panel
- Remove seat belts – remove inboard belt latch and buckle (center of car)

2. Loosely attach rear-mounting foot to vehicle using factory seat hardware on floor of vehicle.

Note: DO NOT tighten these bolts until Step 6 of the installation process.



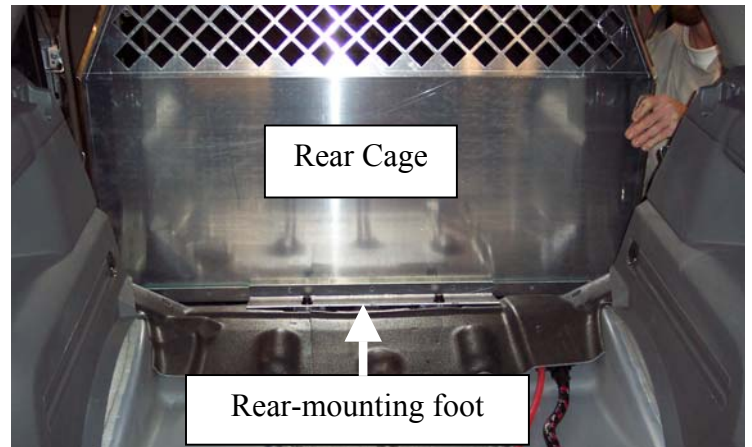
INSTALLATION:

1. Place Floor:

- Place floor in vehicle and butt up to rear-mounting foot.

2. Mount Rear Cage:

- Place rear cage on top of floor.
- Attach rear-mounting foot to aluminum floor and rear cage using $\frac{1}{4}$ -20 x $\frac{3}{4}$ " Stainless carriage bolts and serrated nuts.
- Attach aluminum floor to rear cage using $\frac{1}{4}$ -20 x $\frac{1}{2}$ " Stainless carriage bolts and serrated nuts.



3. Mount Front Cage:

- Place the cage on top of floor.
- Attach bottom of cage to floor using $\frac{1}{4}$ -20 x $\frac{1}{2}$ " Stainless carriage bolts and $\frac{1}{4}$ -20 serrated nuts.

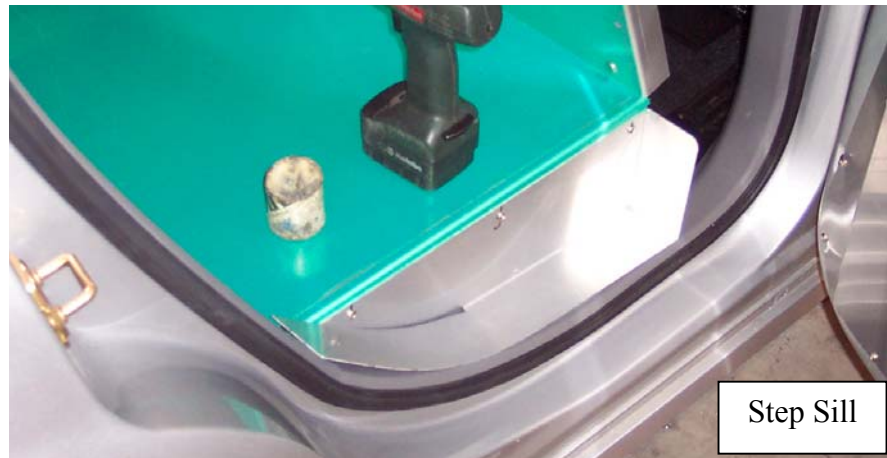
4. Mount Ceiling:

- Place ceiling on top of front and rear cages being careful not to rip headliner.
- Attach using $\frac{1}{4}$ -20 x $\frac{1}{2}$ " Stainless carriage bolts and serrated nuts.



5. Mount Aluminum Step sills

- Center floor inside vehicle.
- Front edge of floor will line up with front edge of step sill. Top of Step sill will mold to curve of trim.
- Pre-drill and attach using #10 x 1/2" Stainless sheet metal screws.



6. Front and Rear Mounting Brackets.

- Lower "B" pillar trim will need to be partially removed to allow for mounting to metal behind trim.
- Loosely attach 2-pcs front mounting brackets to front cage using 1/4-20 x 3/4" carriage bolts and serrated nuts.
- Mark and pre-drill where mounting bracket comes into contact with "B" pillar support.
- Attach to metal "B" pillar support using 1/4" x 3/4" Hex head lag bolts.
- Trim will have to be notch to accept bracket.
- Tighten all hardware on front and rear cage mounting brackets.



Front Cage Mounting Brackets



7. Rear Lower Fillers

- Position and attach to rear cage using #10 x 3/4" Stainless sheet metal screws.
- Filler lines up with bend on rear cage,
- Attach to step trim using #10 x 3/4" Stainless sheet metal screws.

Note: apply pressure to filler panels while installing, in order to get a clean tight fit.

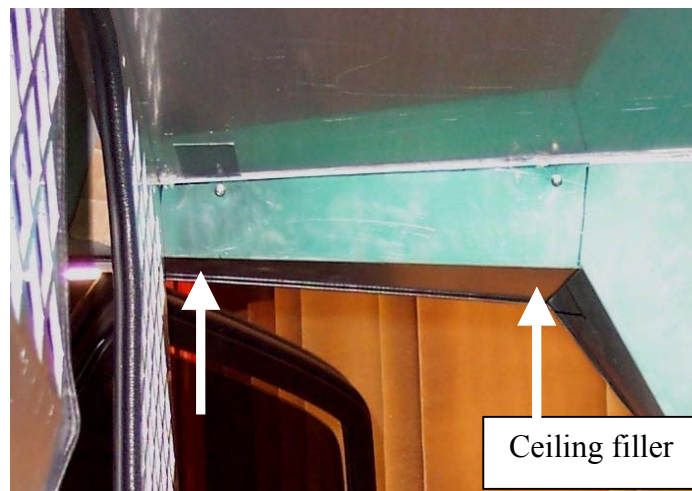
8. Rear Upper Fillers:

- Applying pressure to rear upper filler panel, tight to rear cage ceiling and bottom trim, mark and pre-drill mounting holes
- Attach to cage using #10 x 3/4" Stainless sheet metal screws.



9. Ceiling Fillers

- Position ceiling filler to fill gap between ceiling of K-9 unit and vehicles headliner.
- Mark, pre-drill and attach using #10 x 1/2" Stainless sheet metal screws.



10. Mount door panels:

- Center so edges do not hang over.
- Attach top lip of door panel to vehicles door using #10 x 3/4" Stainless flat head screws. Be sure to use a 5/32" pilot and wax screw.
- Proceed to mount remainder of door panel.
- Starting at the top and working your way down, pre-drill w/ 5/32" drill bit and attach to door using #10 x 3/4" Stainless sheet metal screws.

Note: Starting at the top and working your way down will insure a clean tight fit to the door.



Note: apply wax to screws to avoid screw head from snapping.



Note: Product is painted black for Demo purposes only. Product is shipped unpainted

Contour Window Guards

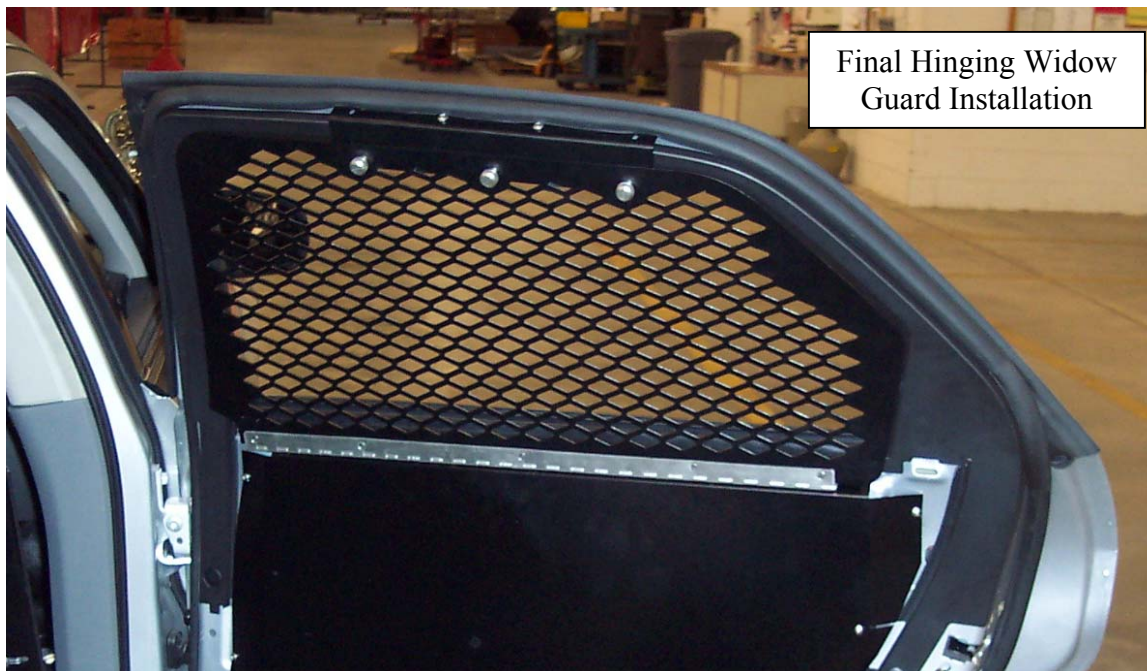
11. Mount window guards:

Note: window guards have holes around perimeter for permanent mounting. These holes are not used with hinge kit. They also come flat in shipping. The guard must be pre-bent (outward) so it fits the contour of the vehicles window frame. Do not use holes on side of window guard to mount with the hinge application!

- Hold window guard with pre-assembled hinge and upper bracket onto window frame.
- Make sure guard is centered on window.
- Hinge window down being sure to keep window guard centered and mark holes using window guard as template on 1" bent lip of door panel.
- Pre-drill and attach hinge to lip on door panel using #10 x 1/2" Stainless flat head sheet metal screws.
- Hinge window guard back to up position with upper mounting bracket attached and mark mounting holes.
- Pre-drill and attach upper mounting bracket to window frame using #10 x 1/2" Sheet metal screws.
- Re-attach window guard to bracket. This step may require some adjustment to align thumb screws to nut-certs on bracket.



Note: Product is painted black for Demo purposes only. Product is shipped unpainted



Note: Product is painted black for Demo purposes only. Product is shipped unpainted

13. Front Lower Aluminum Fillers:

- Attach as shown using (3) 1/4-20 x 3/4" carriage bolts and serrated nuts.
- Close door to position, then tighten.

14. Front Upper Lexan Fillers:

- Close door to position.
- Drill 1/4" holes through lexan and cage.
- Attach using (3) 1/4-20 x 3/4" carriage bolts and serrated nuts.
- Tighten all hardware.

15. Silicone:

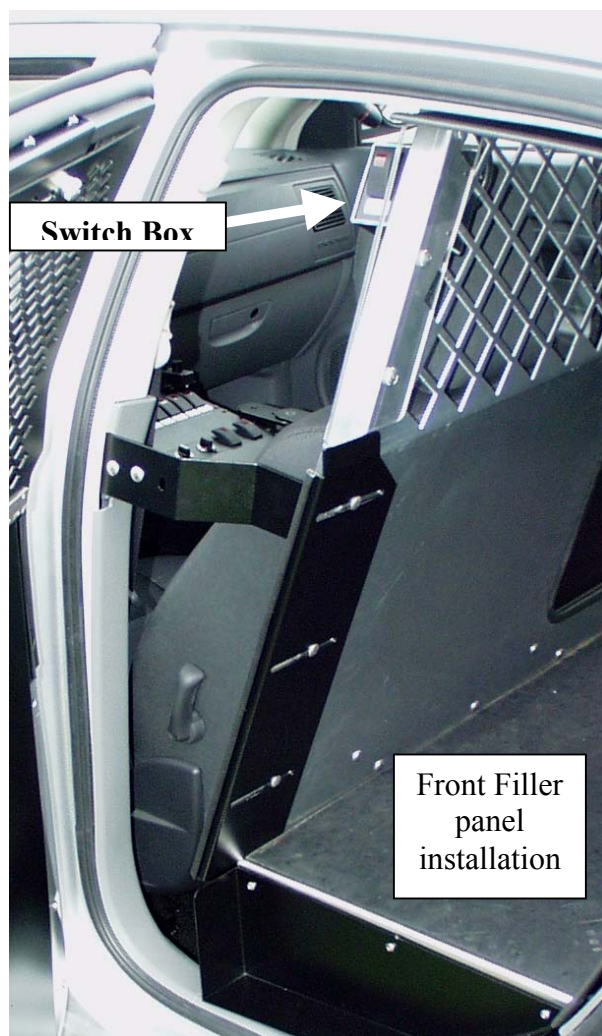
- All gaps and seams must be sealed.

16. Rubber matting:

- After silicone is dry, place rubber matting.

17. Dome Light Switch Box:

- The switch box location can be at the customer's discretion.
- Mounting on driver's side of the vehicle in upper left corner is recommended.



Free Manuals Download Website

<http://myh66.com>

<http://usermanuals.us>

<http://www.somanuals.com>

<http://www.4manuals.cc>

<http://www.manual-lib.com>

<http://www.404manual.com>

<http://www.luxmanual.com>

<http://aubethermostatmanual.com>

Golf course search by state

<http://golfingnear.com>

Email search by domain

<http://emailbydomain.com>

Auto manuals search

<http://auto.somanuals.com>

TV manuals search

<http://tv.somanuals.com>