



INSTRUCTIONS FOR INSTALLATION & USE

WD52

Hotpoint recommends, for your own safety and to ensure you get the best possible results from your Washer Dryer, you read through this booklet and follow these steps thoroughly.

STEP 1 Electrical Guide

Choose a location for your washer dryer, where possible on a solid floor, with the electrical sockets and water supply taps easily accessible.

Allow sufficient space: 600mm width, 600mm depth and 900mm height. DO NOT install in a bath or shower room.

WARNING: This appliance must be earthed.



STEP 2 Installation Guide

Dispose of packaging material in a safe place and remove any labels.

Please read through thoroughly to ensure you understand each stage before you begin.

Remember you may be charged for a service call if a problem with your washer dryer is caused by incorrect installation or misuse.



STEP 3 Dispenser Drawer

Read through this section to familiarise yourself with the different compartments within the dispenser drawer.

Hotpoint recommend the Persil range of detergent products.

NOTE: Always follow manufacturer's dosage recommendations.



STEP 4 Wash Guide

A wash chart is provided to help you to select your required programme.

Examples given for the maximum washing load weight for different fabric types.



STEP 5 Options Guide

All available optional wash features are explained within this section - These allow you to adjust your selected wash programme to suit your needs.

NOTE: In addition to the temperature of the incoming water, the selection of optional wash features will affect the programme times.



STEP 6 Drying Guide

A guide to drying times is provided for independent drying programmes, along with a list of items not suitable for tumble drying.

Examples given for the maximum drying load weight for different fabric types.

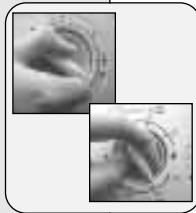
NOTE: Always make sure the mains button is in the OFF position before selecting an independent drying programme.



STEP 7 Wash & Auto Dry Programme

A picture guide provides a clear explanation how to set a wash and auto dry programme. DO NOT overload the washer dryer.

NOTE: Hotpoint recommend, on completion of your programme, that you switch off both the electricity and water supply to the appliance.



STEP 8 Troubleshooting

Please refer to the Troubleshooting section if you have any problems when using your washer dryer. There may be nothing wrong!

READ BEFORE CONTACTING SERVICE!



Read the rest of these instructions to get the best from your appliance, remember to fill in your guarantee registration.

Keep these instructions in a safe place for quick reference.

STEP 1 Electricity Supply

WARNING: The appliance must be earthed.

Fuses

Your appliance comes fitted with a plug and a 13A fuse. If you need to replace the fuse, only those rated at 13A and ASTA approved to BS1362 should be used. To change fuse lift holder to vertical position and lift fuse out. To replace, insert fuse and push fuse holder down into locked position. Correct replacement is identified by colour coding or the marking on base of plug.

WARNING: Do not use plug unless fuse holder is in locked position.

Changing the Mains Lead

A special lead can be ordered from Hotpoint Service
UK: 08709 066 066 or Republic of Ireland: 1850 302 200
If you have damaged the existing lead or require a longer one a charge will be made. It is strongly advised that this work is carried out by a qualified electrician.

Changing the Plug

Cut off and dispose of the supplied plug if it does not fit your socket.

WARNING: To avoid a shock hazard do not insert the discarded plug into a socket anywhere else.

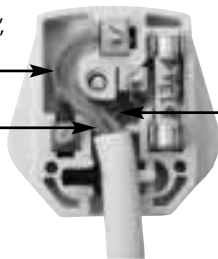
IMPORTANT: WIRES IN THE MAINS LEAD ARE COLOURED IN ACCORDANCE WITH THE FOLLOWING CODE:

Green/Yellow	-	Earth
Blue	-	Neutral
Brown	-	Live

If you change the plug, the colour of wires in the mains lead may not correspond with the colour of the markings identifying terminals in the plug. You should therefore wire it as shown:

Green and yellow (Earth) wire to terminal marked 'E', symbol \perp , or coloured green and yellow.

Blue (Neutral) wire to terminal marked 'N' or coloured black.



13A ASTA approved fuse to BS1362.

Brown (Live) wire to terminal marked 'L' or coloured red.



CE marking certifies that this appliance conforms to the following EEC directives:
Low Voltage Equipment - 72/23/EEC & 93/68/EEC
Electromagnetic Compatibility - 89/336/EEC, 92/31/EEC & 93/68/EEC



STEP 2

1

POLYSTYRENE BLOCK...

NOTE: YOU MAY NEED A SECOND PERSON TO HELP YOU RAISE AND LOWER THE APPLIANCE.



This is part of the packaging and should have come away with the polystyrene base -

IF IT HAS NOT... **REMOVE IT!**

4

NOT
MO
ALC

W
Y
H
LEV
D
(*s

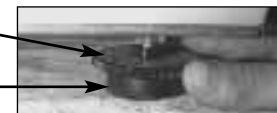
5

LEVEL?...

YOUR MACHINE WILL BE NOISY IF THE TWIN FEET ARE NOT ADJUSTED SO THE MACHINE STANDS LEVEL.
Each foot has two parts: The Locking Disk and the Foot.

Locking Disk

Foot



i Release the locking disk on the two front feet and screw the feet in or out until the machine stands firm and level.

ii Turn the feet on the back of the machine in or out until each of the feet is firm and level.

Installation

2

REMOVE TRANSIT BRACKETS...

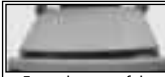
IMPORTANT:

Internal transit brackets are fitted to prevent damage during transit and **MUST** be removed before use...

Failure to do so may cause damage to your machine!



Remove and retain 3 screws from the back of the worktop lid



From the rear of the machine, grip sides of the worktop lid, lift, slide and pull towards you.

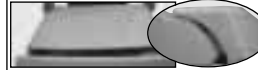


Remove 4 screws and the rear transit bracket - retain.



Remove 3 screws and front transit bracket - retain.

Slide and push worktop lid back into position, ensuring front edge is correctly located into the console.



Replace the work top lid using the 3 original screws.

3

CONNECT TO THE

PLEASE USE THE NEW HOSES SUPPLIED, FITTED TO THE MACHINE.



DO NOT REMOVE!

Old hoses may cause leaks due to worn out washers.

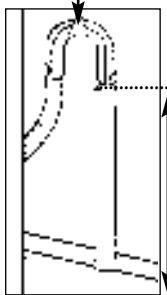
DRAINAGE SYSTEM... we recommend one of the following:

NOTE: ALTHOUGH YOU MAY NEED TO REMOVE THE HOOKED END SUPPORT ALONG THE GREY DRAINAGE HOSE, DO NOT REMOVE IT.

WHICHEVER DRAINAGE METHOD YOU USE, MAKE SURE THAT THE HOOKED END SUPPORT IS FIXED SECURELY TO, OR ABOVE THE 'MINIMUM DRAINAGE HOSE HEIGHT LINE'* (See Getting to Know your Appliance)

STANDPIPE METHOD

Hooked End Support

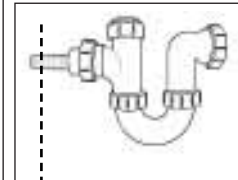


Insert drainage hose approximately 100mm into the standpipe.

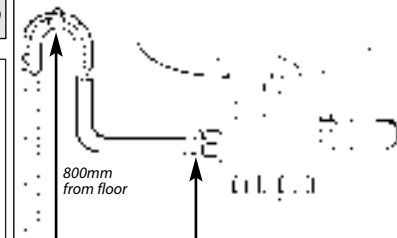
Standpipe height: minimum 500mm from the floor.

OR

UNDER SINK METHOD



cut off the blocked end of the under sink drainage unit.



Fix the hooked end support at a minimum 800mm from the floor.

Attach the GREY drainage hose to the under sink drainage unit securely, using a hose clip.

6

CONNECT TO THE POWER SUPPLY...

PLUG YOUR MACHINE INTO AN ELECTRICAL SOCKET WHICH IS EASILY ACCESSIBLE. **SWITCH ON**



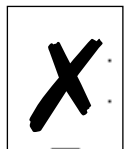
NOTE: Hotpoint recommend extension leads are not used.

Move your machine into position, take care not to trap or kink the hoses.

7

READY...

TO CHECK ALL PARTS CLEAN THE INSIDE OF THE MACHINE. **SELECT A 95° WHITE**



WITH

THIS WILL TAKE A

THE WATER SUPPLY...

i Check both hot and cold water supplies are running freely...

ii Connect fill hoses to water supply taps:

- Red or Grey Hose end to Hot
- Blue Hose end to Cold

TURN ON BOTH TAPS

If you have no hot water supply...

A cold fill adaptor is available from your local Hotpoint authorised Service Centre or by calling the Genuine Parts & Accessories Hotline (see KEY CONTACTS).



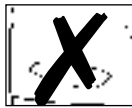
OF THE INSTALLATION AND TO THOROUGHLY
YOUR MACHINE:

COTTON WASH PROGRAMME (refer to STEP 4)

WITHOUT ANY LAUNDRY

and

WITHOUT ANY DETERGENT



APPROXIMATELY 2hrs 30mins TO COMPLETE

STEP 3 The Dispenser Drawer

Changing the Main Wash Indicator:

The main wash indicator has been fitted to dispense powder detergent only.

If you wish to use liquid detergent, reposition the main wash indicator as shown below:



1 Pull the drawer out until it reaches its stop.



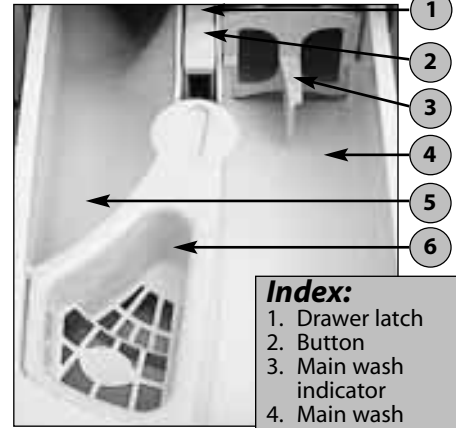
2 Press down on button, to release the drawer latch and remove the drawer.



3 Lift the main wash indicator out of slots, rotate and reposition for Liquid, ensuring it is secure.



4 Relocate the drawer and push back into place.



Index:

1. Drawer latch
2. Button
3. Main wash indicator
4. Main wash compartment
5. Prewash compartment
6. Fabric conditioner compartment.

Dispensing Powder Detergent

To achieve optimum wash results we recommend that you use the detergent manufacturers dispensing cup, to dispense no more than 300ml of powder.



Dispensing Fabric Conditioner

Pour fabric conditioner into the compartment. We recommend that you do not exceed the maximum level indicated.



Cleaning the Dispenser Drawer & Compartments:

It is advisable to clean the dispenser drawer regularly:

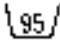
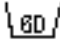
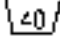
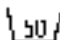
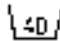
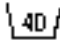
Remove the drawer, see 'Changing the Main Wash Indicator', wash the dispenser drawer and clean out the compartment. Dry thoroughly and relocate.



STEP 4

Choosing a Washing Programme

IMPORTANT INFORMATION: The temperature of the incoming water supply and selection of any Optional Wash Feature, ie. Economy Wash, will affect the programme times.

ITCL	Codes	Fabric	Temp. °C	Full Load	Programme Time (mins) based on hot and cold fill	Approx. Max Spin Speed depending on model
A		Heavy soiled loads. On completion, switch 'OFF' mains button before selecting wash programme. WARNING: Not for woollen or delicate items.	40	3 - 5kg	15 - 25	400rpm
B		Heavy soiled white cotton loads (includes a prewash).	95	5kg	130 - 140	1100rpm
C		White Cotton & Linen without special finishes.	95	5kg	110 - 120	1100rpm
D		Colourfast cotton, linen or viscose without special finishes	60	5kg	160 - 180	1100rpm
E		Non-colourfast cotton, linen & viscose	40	5kg	65 - 75	1100rpm
F		Coloured nylon, polyester, acrylic/cotton mixtures, cotton or viscose with special finishes (eg. drip dry), coloured polyester/cotton mixtures	50	3kg	50 - 60	900rpm
G		Acrylics, acetates & tri-acetate blends of these fabrics with wool, polyester/wool blends	40	3kg	45 - 50	900rpm
H		Quickwash for freshening up lightly soiled items WARNING: Not for woollen items.	Incoming Household Supply	0.9kg	30 - 35	900rpm
J		Woollen blankets, wool mixtures with cotton, rayon or silk.	40	2.7kg	40 - 45	900rpm
		Shrink resistant machine washable wool	40	1.4kg	40 - 45	900rpm

WASHING WEIGHT LOADS

Two examples of typical loads for washing different types of fabric:

COTTON

- 2 Bath Towels
- 6 Shirts
- 6 Blouses
- 2 Set of Pyjamas
- 4 Sets of Underwear
- 2 Pillow Cases

= 5kg

SYNTHETIC

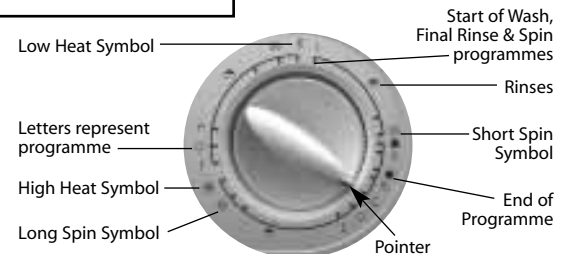
- 2 Children's Dresses
- 4 Shirts
- 4 Blouses
- 1 Set of Pyjamas
- 4 Sets of Underwear

= 3kg

Wash Dial & Symbols:

Before selecting a wash programme, ensure the mains button is in the 'OFF' position. Turn dial slowly clockwise. You will hear a click as the pointer aligns with the start of your chosen wash programme, final rinse or spin.

NOTE: Failure to correctly align the pointer at the start of a wash programme will result in detergent not being dispensed.



STEP 5

Optional Wash Features

Button Selection:

To select, press button.
Press again to cancel.

Economy Wash

Save money and time on lightly soiled loads.

Lightly soiled clothes are washed at the temperature of the incoming household water supply.

- Programme 'A' is heated to a reduced temperature of 30°C.
- Not available with programme 'H'.

Half Load

Save money and time on smaller loads.

- Reduces the amount of water used for rinses.
- Not available with programme 'A'.

NOTE: Remember to cancel buttons after use!

Automatic Features

Intelligent Care:

Your appliance has an inbuilt feature to prevent it spinning with an unbalanced load, avoiding excessive vibration and prolonging the life of the appliance.

Pulse Spin:

Helps reduce wear and tear on your laundry.

Pulse spin is an automatic function where a long, steady spin is followed by a 30 second burst at the maximum speed for your appliance, to enable safer, more efficient water extraction.

Dry Spin:

There will be a 2 minute spin about 20 minutes after the drying programme has started; this improves the drying performance.

NOTE: This feature will not operate if you have selected a combined Wash & Auto Dry Programme for synthetic fabrics.



STEP 6

Choosing a Drying Programme

Items Not Suitable for Tumble Drying:

- Garments with the ITCL code - ~~X~~
DO NOT TUMBLE DRY.
- Woollens.
- Large bulky items eg. quilts, bedspreads, pillows etc... expand when dry, preventing air flow through the appliance.
- Items containing plastic film, foam rubber or rubber like materials eg. pillows, cushions, PVC rainwear or inflammable articles which contain inflammable substances eg. towels contaminated with hair lacquer.
- Fibreglass (eg. some types of curtains).
- Items which have been dry cleaned.

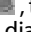
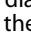
Fabric Type	Programme	Dry Weight Load	Programme Selector Setting		Time Setting (approx.mins)	
			SPIN	HEAT	IRON DRY	FULL DRY
Natural	B,C,D & E	2.5kg max.	☉ Long	☼ High	55	80
			☉ Long	☼ High	35	50
Synthetic	F,G & H	2kg max.	☉ Short	☼ Low	80	90
			☉ Short	☼ Low	45	60

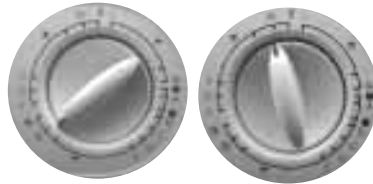
IMPORTANT INFORMATION: A 10 minute 'Cool Tumble' phase at the end of each drying cycle allows fabrics to gently cool down, minimising creasing.

All fabrics contain a little natural moisture even when 'dry', this should not be lost if the clothes are to remain soft and fluffy. If clothes are subjected to extreme drying they tend to wrinkle and consequently need more ironing than usual. As clothes feel damper when warm, allow for this when removing items before the 'Cool Tumble' phase is complete.

This machine incorporates a 'Dry Spin' feature, see Automatic Features.

Spin Only Option:

To select Long Spin turn wash dial clockwise until the pointer aligns with , to select Short Spin turn wash dial pointer to . Press the mains button 'ON'.



DRYING WEIGHT LOADS

Two examples of typical loads for drying different types of fabric:

COTTON

- 1 Bath Towel
- 3 Shirts
- 3 Blouses
- 1 Set of Pyjamas
- 2 Sets of Underwear
- 1 Pillow Case

= 2.5kg

SYNTHETIC

- 2 Children's Dresses
- 2 Shirts
- 4 Blouses
- 1 Set of Pyjamas

= 2kg

Independent Drying Programme

IMPORTANT INFORMATION: Before selecting an independent drying programme, ensure the mains button is in the 'OFF' position.



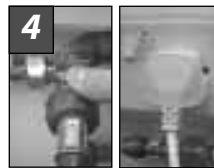
1 Remove the wet laundry and dosing ball (if used) until the correct 'Drying Weight Load' is left in the drum.



2 Close door by applying pressure at the 2 o'clock position.



3 Turn the drying dial to select a suitable drying time, see chart above.



4 Switch on both the water and electricity supply at the mains.



5 Press 'ON' to start the drying programme. After a few seconds the door will lock and an indicator light will illuminate throughout the programme.



6 1-2 minutes after completion of the wash programme the door locked indicator light will go out and the door can be opened. Switch 'OFF' after use.

WARNINGS:

- If your appliance is not permanently plumbed in, turn on the cold water supply to the appliance and hook the drain hose over the sink to enable condensing action to work.
- The dryer is intended for use only where water is used for the cleaning process.
- Be careful not to touch the drum at the top as this area gets hot during drying.
- On no account should liquid fabric conditioner be added during the drying process.
- Misuse of the dryer may create a fire hazard.

STEP 7

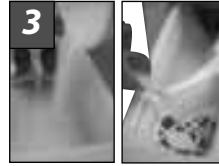
Wash & Auto Dry Programme



Sort laundry by label into groups with the same wash & dry requirements, load the appliance. See Drying Weight Load examples (STEP 6).



Close door by applying pressure at the 2 o'clock position.



Add detergent and/or fabric conditioner to the dispenser drawer (see STEP 3).



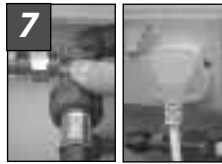
Select required wash programme (see STEP 4) by turning the wash dial clockwise.



Select optional wash feature (see STEP 5) by pressing button.



Turn the drying dial to select a suitable drying time and temperature for fabric type (see chart, STEP 6).



Switch on both the water and electricity supply at the mains.



Press 'ON'; the door will lock and after a few seconds the indicator light will illuminate and stay lit throughout the wash & dry programme.



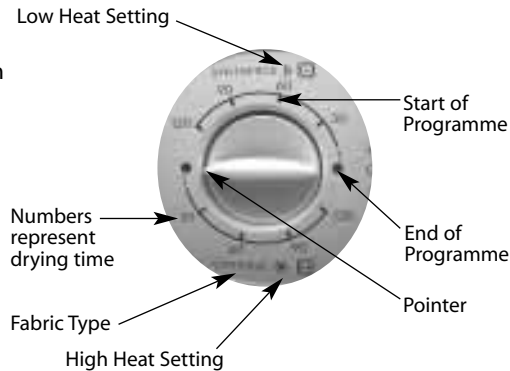
1-2 minutes after completion of the wash programme the door locked indicator light will go out and the door can be opened. Switch 'OFF' after use.

WARNINGS:

- Do not allow children to play with the appliance or tamper with the controls.
- Do not overload the appliance! It may damage laundry and reduce the quality of the wash.
- Do not attempt to open the door when water is visible in the drum or if the door locked indicator light is lit.
- Do not use a dosing ball to dispense detergent when using a wash and auto dry programme.

Drying Dial:

Rotate the dial in any direction to the required heat setting / drying time. During operation the dial will slowly rotate clockwise to the next OFF position at which point the drying cycle will end, after a few seconds the door locked indicator light will go out and the door can be opened.



STEP 8

Troubles

Washcare Tips:

Before washing:

- Pre-treat stains.
- Close zips, tie belts, strings etc... and press studs to prevent tangling.
- Remove papers or tissues from pockets.
- Remove sharp objects and coins from pockets as they could cause damage to clothes or the appliance.
- Limit the size of absorbent loads ie. towels, to 3kg (7lb) to give good washing/rinsing results.
- Place small items in a wash bag.
- Check wash labels as some items may require a cool programme.
- Wash non-colourfast woollens or really dirty laundry separately as they may affect other items.
- Laundry will not wash properly if you overload the appliance.
- Laundry without a wash label should not be machine washed.

MY MACHINE MAKES A NOISE OR VIBRATES IN A SPIN PROGRAMME.

Check all loose items, such as coins, have been removed from the laundry.

Have **both** transit fixings been removed from the machine?

Has the polystyrene block been removed from underneath the machine?

Have you adjusted the feet to stabilise the machine?

See STEP 2: **Installation**

MY LAUNDRY HAS NOT SPUN DRY.

Was a short spin programme used on a non-synthetic load.

There has been an unbalanced load and the machine could not spin. Redistribute the clothes by hand and select a spin only programme.

Did the water pump out?
If not see 'MY MACHINE DOES NOT PUMP OUT WATER'.

MY MACHINE WILL NOT START

Close the door. Choose a programme and then press 'ON'

Does the 'door indicator' light come on after a few seconds?
If not push at the 2 o'clock position until it clicks shut.

Is the machine plugged in and switched on?

Is the socket OK? Test with another appliance to check.

Is the fuse in the plug OK?

Plug the machine in and turn the socket switch on.

If possible use another socket for the machine.

If not replace it, see STEP 1: **Electricity Supply**

MY MACHINE DOES NOT PUMP OUT WATER

Has the drain hose been connected correctly?

Are the drainage unit, or under sink connections free from blockage?

See STEP 2: **Installation**

Clear any blockages that have been found.

Check the blocked end of the under sink drainage pipe has been cut off.

WATER COLLECTS IN FABRIC DISPENSER COMPARTMENT

Clean fabric dispenser.
See STEP 3: **The Dispenser Drawer**.

...ES NOT
...TER

...en installed

...standpipe
...tions free
...es?

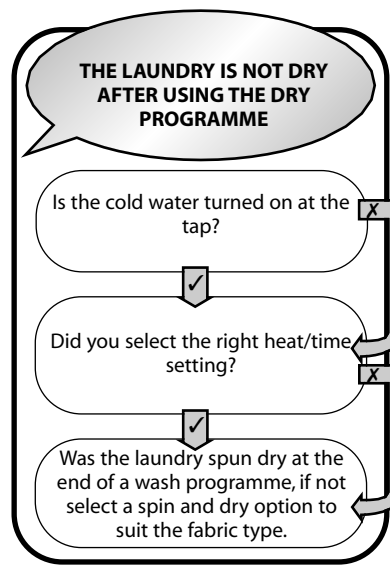
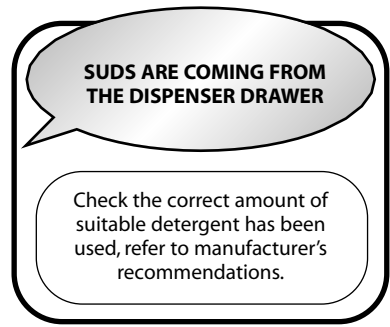
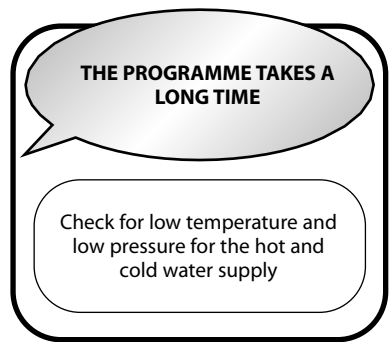
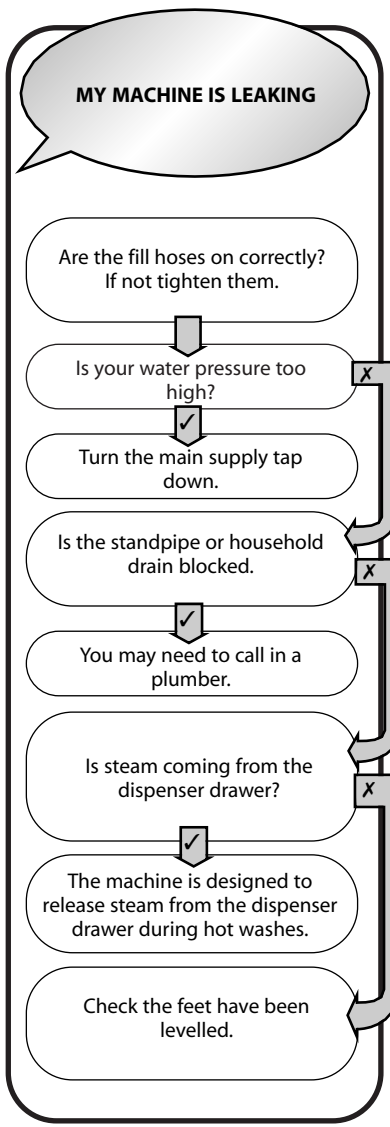
...ation

...hat have

...nd of the
...unit has

...IN THE
...USER
...NT

...er drawer.
...penser



OUT OF BALANCE!

Did you know that putting one or two highly absorbent items in your machine can cause it to become **'OUT OF BALANCE'**.

This happens because the items are clumping together, retaining large amounts of water and therefore acting as a heavy weight in your machine.

When your machine is 'out of balance' it will not spin.

Try adding a large item such as a bedding sheet into the load. This will not absorb as much water and will help to spread the weight in the drum.

If the appliance is still not working contact:
Repair Service and Information Desk
UK 08709 066 066
Republic of Ireland 1850302 200

You will be asked for the following details: Name and Address, Post Code, Telephone Number, Date of Purchase, Colour and Model/Serial Numbers - which can be found on the inside of the door.
Clear and precise details of the query or fault.

Getting to Know your Appliance



Interlocking Door System:

To Open...

Grip the door release lever whilst opening the door.

To Close...

Apply pressure at the 2 o'clock position until the door clicks.

Indicator Light...

When the machine is switched on, the door will lock and after a few seconds the door locked indicator light will illuminate. The indicator light will remain lit throughout the programme.

Approximately 1-2 minutes after the programme has finished the indicator light will go out and the door can be opened.

WARNING: Do not attempt to open the door whilst the indicator light is on.

Cleaning the Exterior:

Use a damp cloth or silicon polish to clean the exterior surfaces of the appliance.

Cleaning the Door Bowl:

Clean the internal surface of the door bowl regularly with a soft cloth. A build up of soap powder and water hardness residue may result in water leaking from the door.

DO NOT clean any part of the machine with abrasive cleaners, scouring agents, acids, chlorine based bleach or metal polish as they may cause damage.

Maintenance Wash:

We recommend a maintenance wash 2 or 3 times a year, to avoid a build up of greasy deposits and water hardness residue. Simply run wash programme 'C' without any laundry in the drum, using the usual amount of detergent.

Key Contacts

After Sales Service

Over 1200 trained specialists, directly employed by us, ensure that you can have complete confidence in both the appliances and services we offer.

Repair Service and Information Desk

UK: 08709 066 066

(Open 8 to 8 Mon - Fri, 8 to 6 Sat, 10 to 4 Sun & Bank Holidays)

www.theservicecentre.co.uk

Republic of Ireland: 1850 302 200

Extended Warranties

UK: 08709 088 088

(Open 8 to 8 Mon - Sun)

www.theservicecentre.co.uk

Republic of Ireland: 1850 502 200

Genuine Parts and Accessories

UK: 08709 077 077

(Open 8-30 to 5-30 Mon - Fri & 9 to 12 Sat)

www.theservicecentre.co.uk

Republic of Ireland: (01) 842 6836

Note: Our operators will require the Model number and Serial number.



Hotpoint guarantee

“Satisfaction guaranteed or your money back”

We give you a unique ‘satisfaction guaranteed’ promise - **valid for 90 days** - after you have purchased your Hotpoint appliance. If there is a technical problem simply call Hotpoint Repair service or visit our web-site at www.theservicecentre.co.uk and where necessary, we will arrange for an engineer to call. If the technical problem is not resolved under this guarantee, **we will replace your machine or, if you prefer, give you your money back.**

All Hotpoint appliances carry a fully inclusive 12 month parts and labour guarantee as well as free replacement parts for the first 5 years (except microwaves, selected integrated appliances and cooker hoods, which have a one year guarantee) provided that they are fitted by a Hotpoint engineer.

Guarantee terms and conditions

Your guarantee is only applicable in the United Kingdom or Republic of Ireland and is subject to the following provisions that your appliance:

- Has been installed and used correctly in accordance with this instruction booklet.
- Has been used solely for domestic purposes and is located on domestic premises (ie. not for commercial or trade use).
- Has been properly connected to a suitable electrical supply voltage as stated on the appliance rating plate.
- Has not been subject to misuse, accident, modified or repaired by anyone other than one of our own service engineers.

For pre purchase information on any other Hotpoint product,



call: 08701 50 60 70 or visit: www.hotpoint.co.uk



Recycling & Disposal Information

As part of Hotpoint's continued commitment to helping the environment, Hotpoint reserves the right to use quality recycled components to keep down customer costs and minimise material wastage.

Please dispose of packaging and old appliances carefully.

To minimise risk of injury to children, remove the door, plug and cut mains cable off flush with the appliance. Dispose of these parts separately to ensure that the appliance can no longer be plugged into a mains socket, and the door cannot be locked shut.

After Sales Service

“No company is better positioned to offer an after sales service on a Hotpoint appliance than us - the manufacturer”

As part of our commitment to you, all Hotpoint appliances have the added benefit of a fully inclusive parts and labour guarantee for the first 12 months. In addition to this you also have the advantage of **free replacement parts for the first 5 years** when fitted by a Hotpoint engineer. When the 12 months parts and labour guarantee expires we offer the following after sales service options:

Repair Service and Information Help Desk

UK: 08709 066066

www.theservicecentre.co.uk

Republic of Ireland: 1850 302 200

Note: Our operators will require the Model number and the Serial number of your appliance.

Available 364 days a year with a fast, effective and value for money service. We have the largest white goods repair service in the UK with over 1200 of our own fully trained engineers. All repairs include a parts and labour guarantee for 12 months from the date of the repair.

If you require any information or have any questions about your appliance, our operators are on hand with help and advice. All this ensures that you will receive the best available after sales service possible.

Extended Warranties

UK: 08709 088 088

www.theservicecentre.co.uk

Republic of Ireland: 1850 502 200

Whether you have just one or a number of Hotpoint appliances in your kitchen, we offer two service cover plans to give you total peace of mind.

- Repair Protection Plan - FREE service repairs for a single Hotpoint appliance during the period of cover.
- Kitchen Cover - FREE service repairs for all your Hotpoint appliances less than 8 years old.

Genuine Parts and Accessories

UK: 08709 077 077

www.theservicecentre.co.uk

Republic of Ireland: (01) 842 6836

A wide range of genuine parts and accessories are available from our hotline or through our web site.

Genuine parts and accessories, extended warranties and service repairs are all

available on our web-site at:



www.theservicecentre.co.uk

General Domestic Appliances Limited, Morley Way, Peterborough, PE2 9JB.

Free Manuals Download Website

<http://myh66.com>

<http://usermanuals.us>

<http://www.somanuals.com>

<http://www.4manuals.cc>

<http://www.manual-lib.com>

<http://www.404manual.com>

<http://www.luxmanual.com>

<http://aubethermostatmanual.com>

Golf course search by state

<http://golfingnear.com>

Email search by domain

<http://emailbydomain.com>

Auto manuals search

<http://auto.somanuals.com>

TV manuals search

<http://tv.somanuals.com>