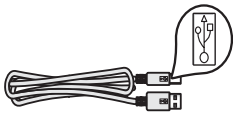


Start Here

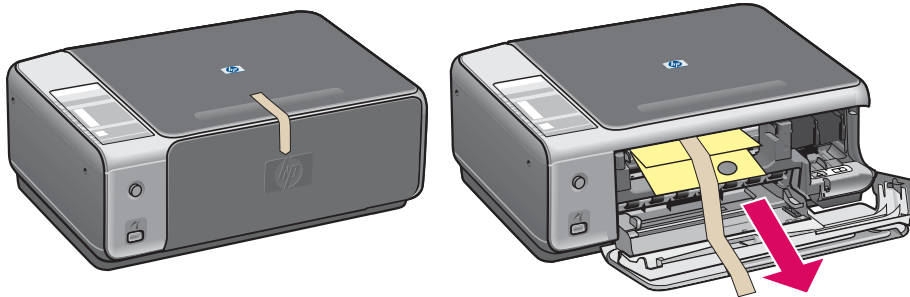
1



Important: Do not connect the USB cable until Step 15 or the software may not install properly.

Follow the steps in order. If you have problems during setup, see **Troubleshooting** at the end of this Guide.

2 Remove all tape and cardboard



CAUTION: Make sure you remove all packing material or the device will not work properly.

3 Locate components



Windows CD



print cartridges



Macintosh CD



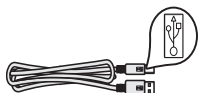
power cord and
adapter



User Guide



control panel overlay (glossy
sticker, may be pre-attached)



USB cable*

* Purchased separately.

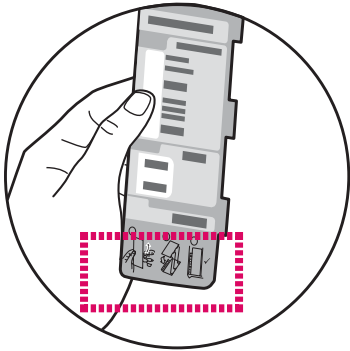
The contents of your box may differ.



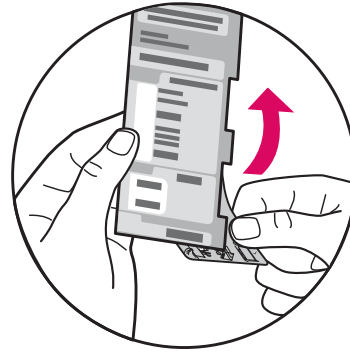
HP PSC 1500 All-in-One series Setup Guide

4

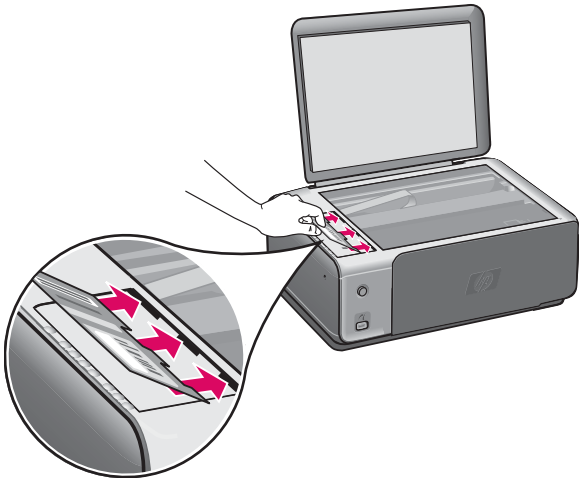
Attach the control panel overlay (if not attached)



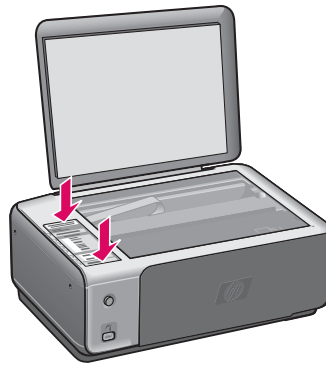
a Bend the bottom of the control panel overlay.



b Remove the bottom tab and the backing from the overlay.



c Lift the lid. Insert the tabs of the overlay into the device. Make sure the tabs are inserted correctly before sticking the overlay to the device.



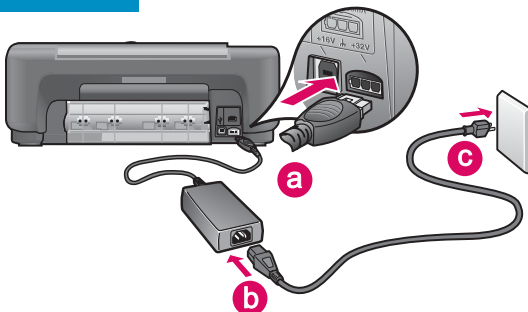
d Press down on the overlay to ensure it is firmly attached. Do not press on the LCD area. The tabs must be in the slots.



CAUTION: The control panel overlay must be attached for the HP All-in-One to work!

5

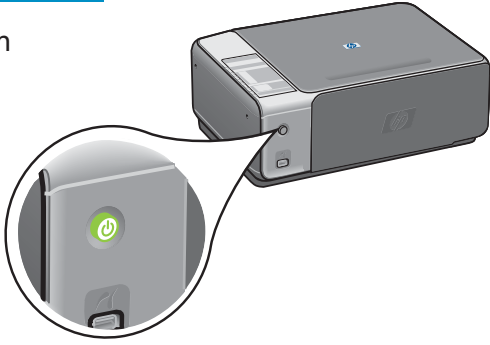
Connect the power cord and adapter



Important: Do not connect the USB cable until instructed later in this guide.

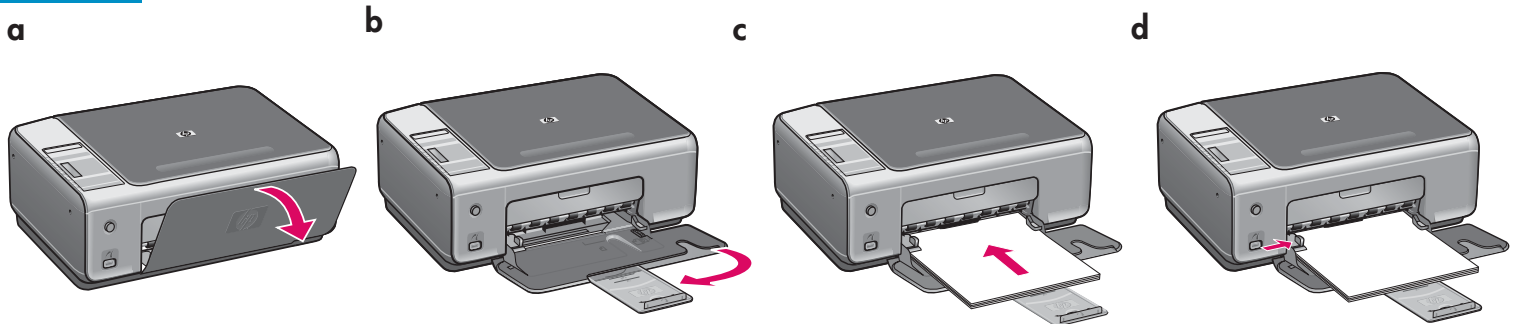
6 Press the On button

On

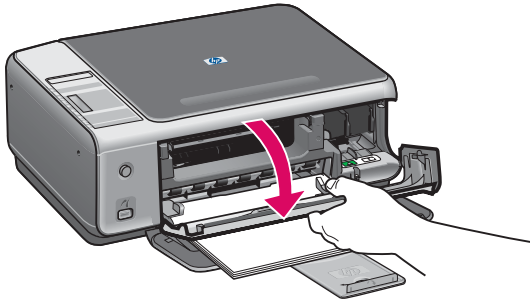


After you press the **On** button, the green light flashes, and then becomes solid. This may take up to a minute.

7 Load plain white paper

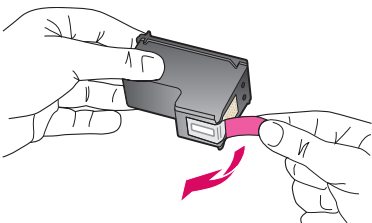


8 Open access door



Lower the access door until it stops. Make sure the print carriage moves to the right side.

9 Remove tape from both cartridges

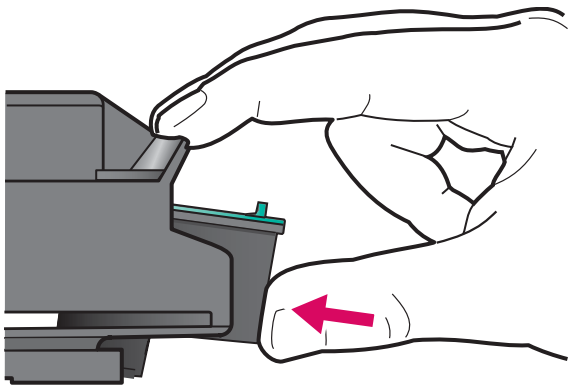
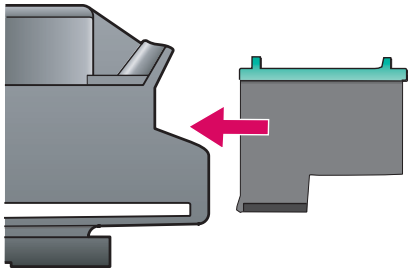
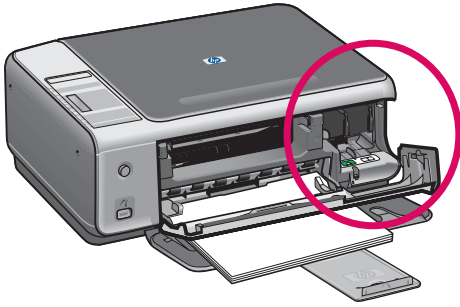


Pull the pink tab to remove the tape from **both** print cartridges.

CAUTION: Do not touch the copper-colored contacts or retape the cartridges.

10

Insert the tri-color print cartridge

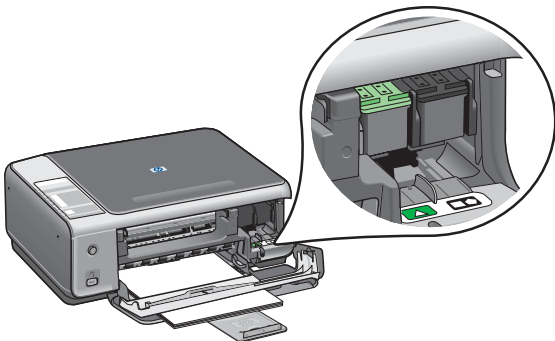


CAUTION: The device must be **On** before you can insert the print cartridge.

- a Hold the **tri-color** print cartridge with the blue HP logo on top.
- b Place the **tri-color** print cartridge in front of the **left** slot.
- c Push the cartridge firmly into the slot until it snaps into place.

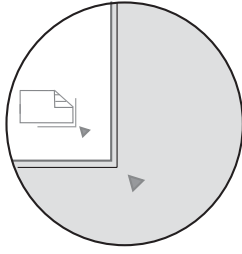
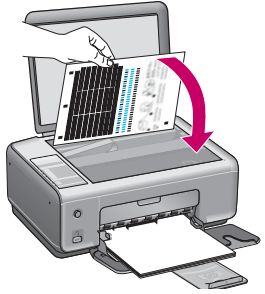
11

Insert the black print cartridge



- a Hold the **black** print cartridge with the blue HP logo on top.
- b Place the **black** print cartridge in front of the **right** slot.
- c Push the cartridge firmly into the slot until it snaps into place.
- d Close the access door.

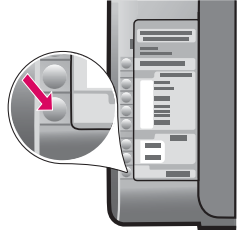
12 Align the print cartridges



After you insert the cartridges, a print cartridge alignment page prints. (This may take a few minutes.)

a Lift the lid. Place the top of alignment page face down in the right front corner of the glass. Close the lid.

b Press the **Start Scan** button.



After the **On** light stops blinking, alignment is complete. Recycle or discard the alignment page.

13 Turn on your computer

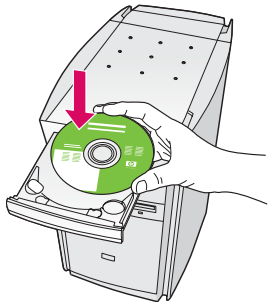


a Turn on your computer, login if necessary, and then wait for the desktop to appear.

b Close any open programs.

14 Choose the correct CD

Windows Users:

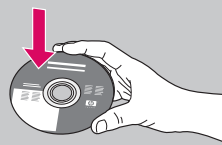


a Insert the HP All-in-One **Windows** CD.

b Follow the onscreen instructions.

If the startup screen does not appear, double-click **My Computer**, double-click the **CD-ROM** icon, and then double-click **setup.exe**.

Macintosh Users:



a Locate the HP All-in-One **Macintosh** CD.

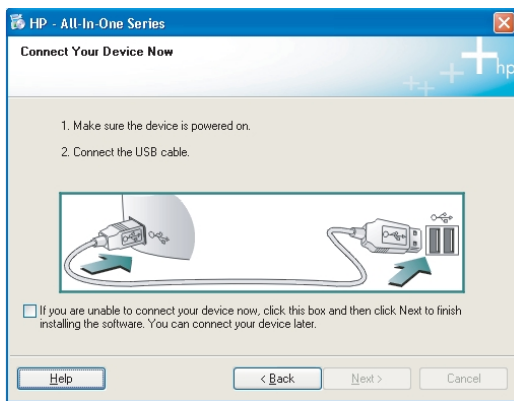
b Continue to the next step.

15 Connect the USB cable

Windows Users:

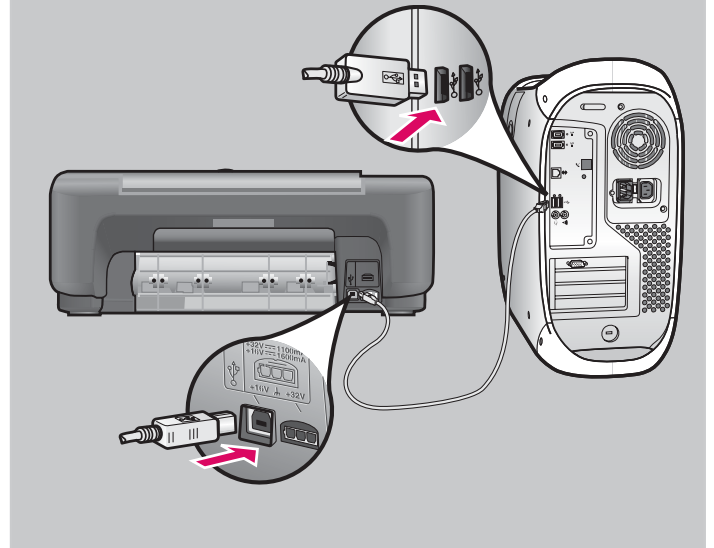
You may have to wait several minutes before you see the onscreen prompt to connect the USB cable.

Once the prompt appears, connect the USB cable to the port on the back of the HP All-in-One, and then to any USB port on your computer.

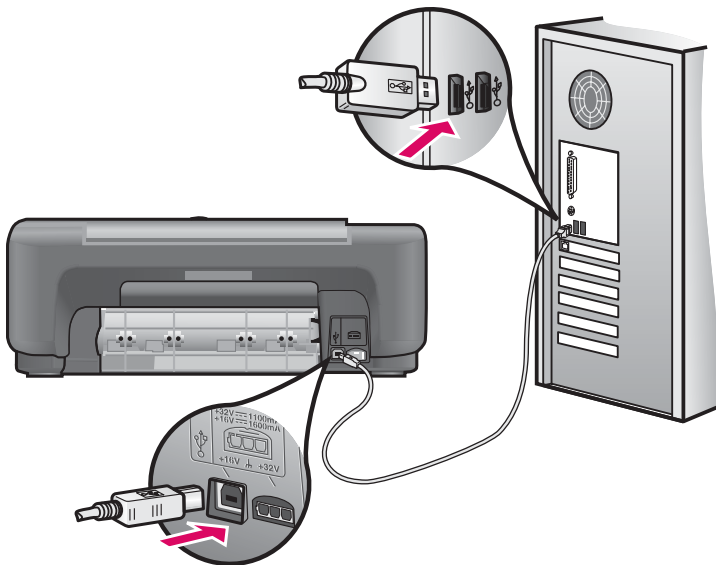


Macintosh Users:

Connect the USB cable to the port on the back of the HP All-in-One, and then to any USB port on your computer.



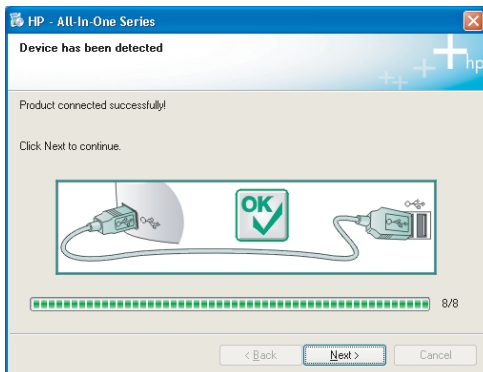
If you do not see these screens, see **Troubleshooting** on the next page.



16 Finish software installation

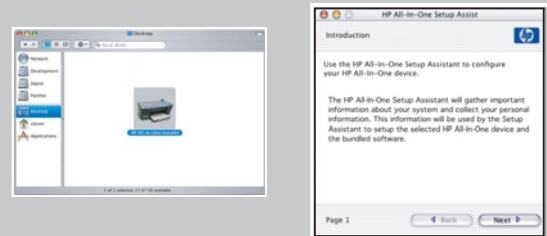
Windows Users:

Follow the onscreen instructions. Complete the **Sign up now** screen. Congratulations!



Macintosh Users:

- Insert the HP All-in-One **Macintosh** CD.
- Double-click the **HP All-in-One Installer** icon.
- Make sure you complete all screens, including the Setup Assistant. Congratulations!

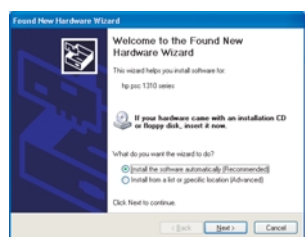


Troubleshooting Software



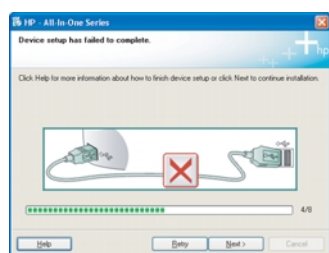
Problem: (Windows only) You did not see the screen telling you when to connect the USB cable.

Action: Remove, and then re-insert the HP All-in-One **Windows** CD. Refer to Step 14.



Problem: (Windows only) The **Microsoft Add Hardware** screen appears.

Action: Click **Cancel**. Unplug the USB cable, and then insert the HP All-in-One **Windows** CD. Refer to Steps 14 and 15.



Problem: (Windows only) The **Device Setup Has Failed To Complete** screen appears.

Action: Verify that the control panel overlay is firmly attached. Unplug the device and plug it in again. Check all connections. Make sure the USB cable is plugged into the computer. Do not plug the USB cable into a keyboard or non-powered hub. Refer to Steps 4 and 15.

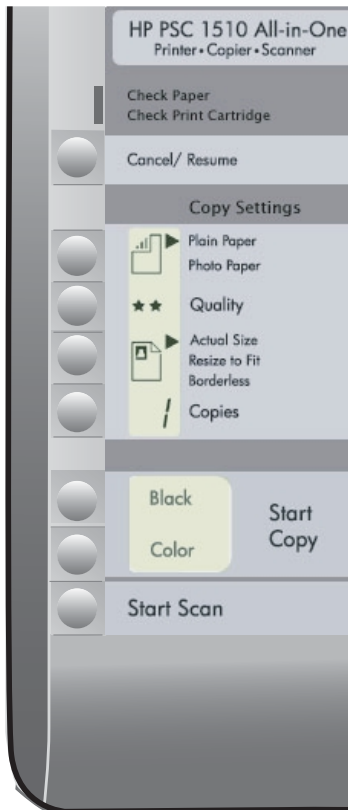
Troubleshooting - Control Panel



Q5888-90232

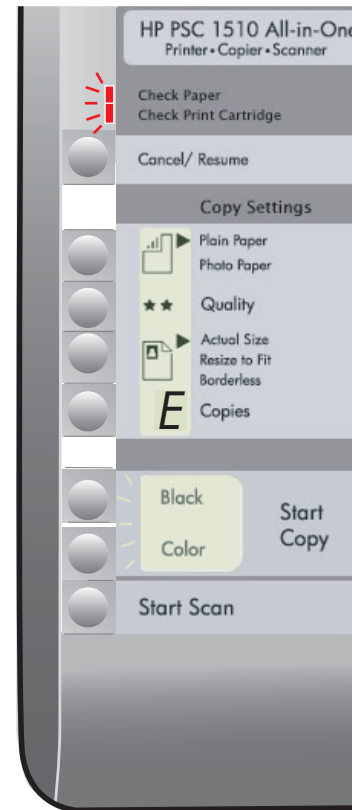
The first image shows how the control panel overlay looks after a successful setup. The second image shows possible problems. See below for more information.

Correct:



Alerts:

1
2



3

4

Alerts:

- 1 The **Check Paper** light is flashing.
- 2 The **Check Print Cartridge** light is flashing.
- 3 **E** An **E** in the Copies area.
- 4 The **Check Paper**, **Check Print Cartridge**, **Start Copy** areas are flashing.

Action:

- Check the input tray. The paper was not loaded correctly. Reload the paper, and then press the **Cancel/Resume** button.
- Make sure the tape was removed from the cartridges. Re-insert the cartridge and then, close the door. Press the **Cancel/Resume** button to continue.
- Check for other lights to determine the problem. See the User Guide for more information.
- The overlay is not attached correctly. Refer to step 4. After attaching, press the **Cancel/Resume** button to continue.

Printed on at least 50% total recycled fiber with at least 10% post-consumer paper.

Visit www.hp.com/support for assistance.

© Copyright 2005 Hewlett-Packard Development Company, L.P. Printed in [].

Download from www.Somanuals.com. All Manuals Search And Download.



Free Manuals Download Website

<http://myh66.com>

<http://usermanuals.us>

<http://www.somanuals.com>

<http://www.4manuals.cc>

<http://www.manual-lib.com>

<http://www.404manual.com>

<http://www.luxmanual.com>

<http://aubethermostatmanual.com>

Golf course search by state

<http://golfingnear.com>

Email search by domain

<http://emailbydomain.com>

Auto manuals search

<http://auto.somanuals.com>

TV manuals search

<http://tv.somanuals.com>