

# THE SMALL BUSINESS SOLUTION



THE HP STORAGEWORKS X510 DATA VAULT



**STORE** *it.*



**SECURE** *it.*



**SHARE** *it.*

# DATA PROTECTION just got **LESS** PUZZLING



If, like many small business firms, you are sharing a broadband connection among a group of loosely connected PCs or Macs (peer-to-peer networking), you need the peace of mind of a secure backup solution for your files and an easy way to share those files with your colleagues and clients. The HP StorageWorks X510 Data Vault gives you all that and more. While there are many reasons to make the HP Data Vault your backup solution, here are the top four:

---

## 1 EASE OF USE

Automated backups, easy file restoration, hot swapping and quick setup (plug in the power cord, connect Ethernet cable, press the power button and it is ready to go in 60 seconds).

---

## 2 EXPANSION

Four internal bays, one external eSATA port and four USB ports (one front, three back).

---

## 3 RELIABILITY

Disaster recovery, HP quality and security features that prevent unauthorized access.

---

## 4 VALUE

Efficiently use all of your disk space with built-in disk management and de-duplication technology. In sleep mode, the HP Data Vault consumes only one watt of electricity, and you can program when connected systems will power up and shut down—saving on energy costs.

# THE SMALL BUSINESS SOLUTION

With the HP Data Vault, your business can automatically centralize, share and access data remotely using any internet-connected computer. It offers a streamlined way to protect, manage and share digital content with colleagues and business partners.

## Store it!

The HP Data Vault comes with empty bays for internal storage expansion and offers external USB and eSATA ports for additional capacity. Use the HP Data Vault to:

- Easily add more storage
- Automatically back up and organize your data
- Better utilize disk space with sophisticated folder duplication and data de-duplication technology

## Secure it!

The HP Data Vault provides automated backup for up to 10 PC clients and Macs on your network, and it offers full system protection and easy data restoration in the event of a hard disc drive failure.

Use the HP Data Vault to:

- Protect critical files and survive a major data loss
- Easily restore files, folder or an entire PC
- Manage access to shared folders

## Share it!

The sharing features of the HP Data Vault allow for better business collaboration. You can remotely synch, manage and share content with your clients.

- Access and share business files remotely
- Save time with local file sharing
- Stream professional photos, graphics, music and videos



## HP Data Vault models

The HP Data Vault comes in three affordable models for every small business data protection need.

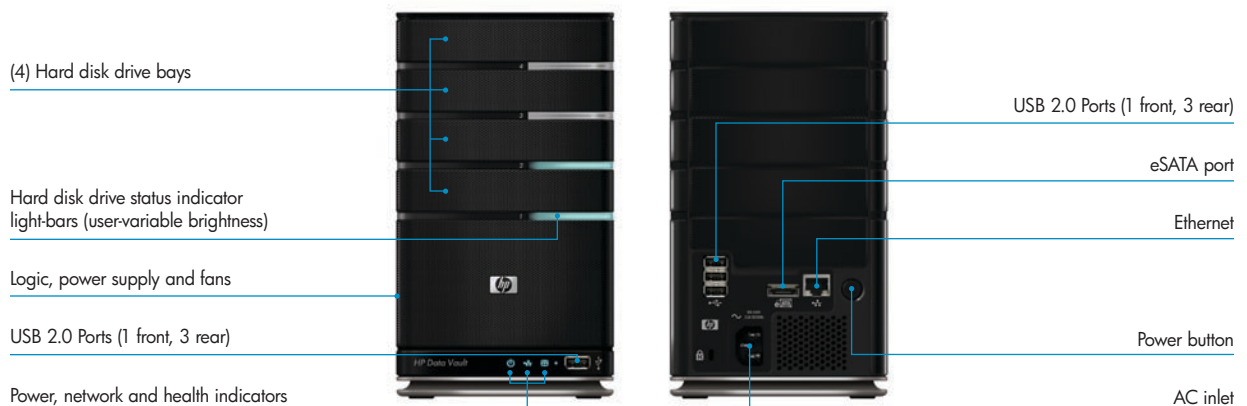
| PRODUCT # | PRODUCT NAME                        |
|-----------|-------------------------------------|
| Q2050A    | HP StorageWorks X510 1TB Data Vault |
| Q2051A    | HP StorageWorks X510 2TB Data Vault |
| Q2052A    | HP StorageWorks X510 3TB Data Vault |



## FEATURES AND BENEFITS

With the HP Data Vault, you can automatically centralize, share and access data remotely using any internet-connected computer. The HP Data Vault also offers a streamlined way to protect, manage and share digital content with colleagues and business partners.

| Feature                                   | Description   | User Benefit  |
|---|---|---|
| <b>Hardware</b>                           |   |   |
| <b>Folder duplication instead of RAID</b> | Every file in a folder tagged for file duplication is written to two separate hard drives on the HP Data Vault  | Redundant data storage for maximum peace of mind; more effective than RAID because only those folders needing duplication are duplicated, instead of an entire hard disk drive (HDD)                          |
| <b>Expandable storage</b>                 | Add internal storage capacity with any off-the-shelf 3.5" SATA I or SATA II drive. Add external storage by using the 4 USB ports (1 front, 3 back) and one eSATA external port <sup>7</sup>                                       | Allows you to increase storage capacity as your business grows (6 TB internally and up to 13.5 TB with external storage options)  |
| <b>Media streaming</b>                    | Includes media streaming services that comply with all UPnP AV standards <sup>1</sup>   | Share professional audio and video content directly from the HP Data Vault  |
| <b>Energy efficiency</b>                  | Smart, energy-saving hard disk drive spin speed and minimal power consumption   | Efficient power management reduces overall operating cost   |
| <b>Software</b>                           |   |   |
| <b>Backup software included</b>           | The Microsoft® Windows Home Server® operating system provides the needed software for file and drive backups. Mac CPU's use Time Machine as the backup software   | Saves money—the HP Data Vault comes with backup software licenses, so you don't need to buy additional backup software, as with other competitive products  |
| <b>Software integration</b>               | Provides fully integrated installation of all utilities and software from one CD  | Quick and easy setup; exceptional ease of use; integrated control panel simplifies browsing, configuration, data backup and help  |
| <b>PC file and drive image backup</b>     | Automatic file backups can be set to run on a schedule; entire hard disk drive image can be copied and easily restored over the network   | Critical business files can be scheduled for back up; helps protect against PC and Mac hard disk drive failures, viruses, and spyware infections; simple recovery process with no need to locate multiple CDs |
| <b>HP Data Vault backup</b>               | Easily back up your HP Data Vault to an external USB hard disk drive <sup>2</sup>   | Quickly create additional file copies if the HP Data Vault is used for primary storage; take the external hard disk drive offsite for disaster prevention   |
| <b>Offsite online data storage</b>        | Includes access to Amazon's S3 online storage service. <sup>3</sup>   | Recover data easily if disaster strikes, collaborate with remote partners or archive information to assist with compliance or record keeping <sup>4</sup>   |
| <b>Remote access to files</b>             | Provides remote access to files from any computer connected to the Internet—and access for authorized visitors to view and retrieve approved files or photos. Includes access to Amazon's S3 online storage service. <sup>3</sup> | Quickly access files when working from home or when traveling; tight control of file access for remote partners   |



## AUTOMATIC BACKUP<sup>5</sup>

With the HP Data Vault, you can restore files, folders or even an entire hard drive from centrally-stored backups. The HP Data Vault automatically searches your network and discovers PCs with Windows Home Server<sup>®</sup> connector software installed, and then backs them up entirely. The HP Data Vault will back up files for a Mac as well, working in conjunction with Time Machine. We've also incorporated new image recovery features for Macs.

For better efficiency, Microsoft<sup>®</sup> Windows Home Server<sup>®</sup> backup software supports de-duplication—it recognizes identical files (across all computers) and will only save a single copy of redundant files, while keeping track of multiple versions by date and originating PC.

### HP Data Vault set up

Setting up the HP Data Vault is easy. The unit comes with a power cable, Ethernet (RJ-45) cable, software and documentation. The set up poster included with the HP Data Vault illustrates the two simple steps (hardware and software) to get started.

#### You will need:

- One or more computers running Microsoft<sup>®</sup> Windows<sup>®</sup> Vista, Windows<sup>®</sup> XP, Windows<sup>®</sup> MCE or Mac<sup>®</sup> OS X 10.5 or later (for any Macs on the network). Note: Up to 10 PC clients and Macs are supported.
- A router with DHCP enabled to provide an automatic IP address to the server
- A broadband connection, such as DSL or cable, for remote access functionality
- A 100 Mbps to 1000 Mbps (Gigabit Ethernet) wired network connection

#### Hardware set up

Simply plug the power cord into the HP Data Vault and the other end into an electrical outlet. Connect one end of the Ethernet cable to the HP Data Vault and the other to an Ethernet port on your router. Press the power button on the back of the HP Data Vault, and it is ready to go in 60 seconds.

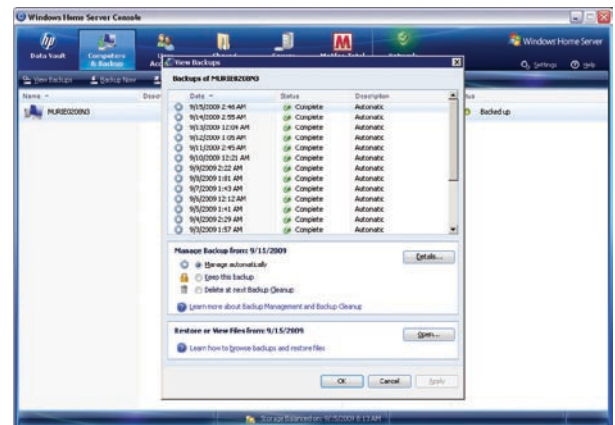
#### Software installation

The first installation must be on a Windows computer. Subsequent installations can be on a Windows or Mac computer. Insert the software installation disk into a network computer and follow the online instructions to install the HP Data Vault. Repeat the software installation on each network computer running either Windows<sup>®</sup> or Mac<sup>®</sup> OS X 10.5 or later.

### TRY THIS

#### Examine backup options

- Open the Windows Home Server<sup>®</sup> Console. From a PC, double-click the HP Data Vault desktop shortcut and select the Windows Home Server<sup>®</sup> Console icon, or double-click the Windows Home Server<sup>®</sup> system tray icon, and log on. From a Mac, click on the HP Data Vault icon located in the Menu Bar and click "Launch Home Server Console."
- Click the Computers & Backup tab in the top navigation bar. You will see a list of computers on your office network that are eligible for backup.
- Click your PC. On the Actions Bar, explore the different actions available, including View Backups, Backup Now, Configure Backup and Remove Backup.

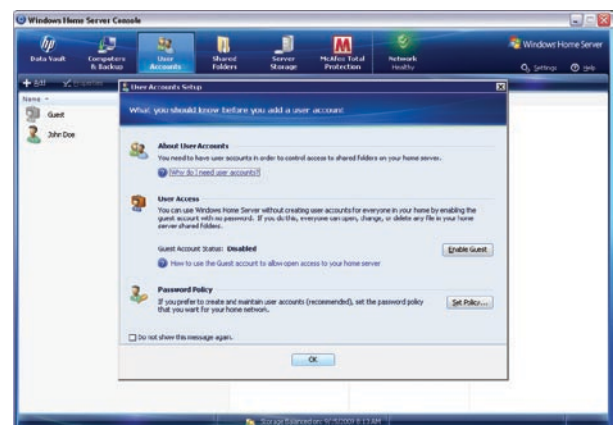


Listing of one computer's daily backups

### HOW TO

#### Set up a user account

- While in the Windows Home Server<sup>®</sup> Console, click the User Accounts tab. When the "User Accounts Setup" window appears, click OK.
- Click Add, then complete the Add User Account Wizard.
- Check the Remote Access box to enable remote access (a strong password is required for remote access).



User Accounts first use wizard

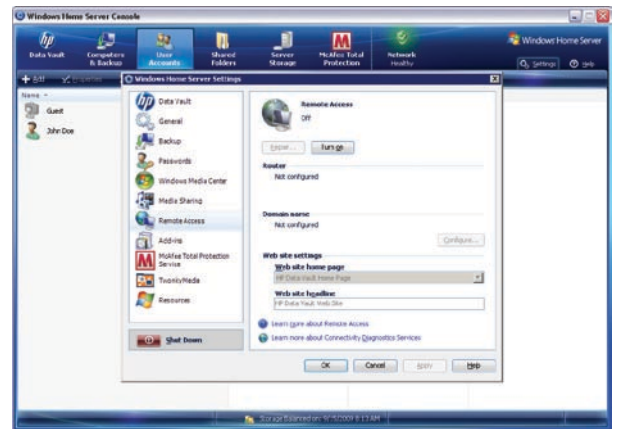
## REMOTE ACCESS<sup>4</sup>

Once configured, your HP Data Vault has a unique Web address, enabling the server administrator to give anyone a username and password to remotely access the HP Data Vault through the Web. Authorized users can access files on the HP Data Vault when they are away from the office. It is even possible to manage the HP Data Vault remotely.<sup>6</sup>

### HOW TO

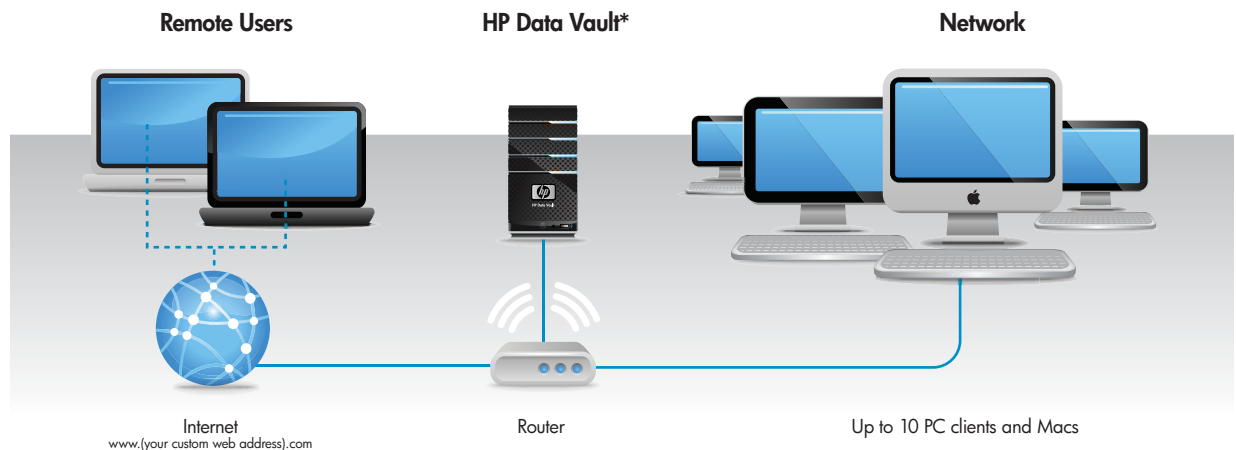
#### Enable remote access

- Open the Windows Home Server<sup>®</sup> Console. From a PC, double-click the HP Data Vault desktop shortcut and select the Windows Home Server<sup>®</sup> Console icon, or double-click the Windows Home Server<sup>®</sup> system tray icon, and log on. From a Mac, click on the HP Data Vault icon located in the Menu Bar and click "Launch Home Server Console."
- Click Settings in the upper right corner of the Home Server Console.
- Click Remote Access in the left menu.
- Click to Turn On remote access. The Remote Access wizard will attempt to configure your router. If you encounter problems, see "Configuring your broadband router" in the Windows Home Server<sup>®</sup> Console help section.
- A wizard will prompt you to select a Domain Name Provider and create a domain name (which will be your Web address). This will be your website for accessing your HP Data Vault server from the Internet. For example, if you registered MyBusiness.hpshare.net for your HP Data Vault, you would type that address into your Internet browser address bar to connect to your server. Additionally, this address is part of the URL (Web address) for accessing a photo album on the HP Photo Viewer.



Remote Access configuration menu

## HP X510 Data Vault Series Networking



## REMOTE MEDIA STREAMING<sup>1</sup>

The Web Media Streamer is a Web application that lets you access media on your HP Data Vault from any place with an Internet connection—coffee shops, hotel rooms, a customer's office, and more.

### HOW TO

#### Remotely stream photos, music or videos

- In order to stream digital media, you will need to enable remote access by following the instructions detailed on page 6.
- Enter the URL (Web address) of your HP Data Vault in the address bar of an Internet browser.
- Click on Media Streamer.
- Log in using your HP Data Vault username and password.
- In the Web Media Streamer window, select Music, Photos, or Videos in the top-left corner.
- Explore the options for playing music, viewing photos and watching videos.
- For videos, note the pull-down menu in the top-right corner. The pull-down menu will present converted videos that are suitable for streaming, either over your local network or remotely.



Access streaming media via a web browser



## PROTECT YOUR NETWORK

An important feature of the HP Data Vault is that it consolidates and reports on the health of your business network and all attached PCs through a pop-up notification on the menu bar of your PC. This consolidation makes it easy to see the health of all of your computers at a glance and, if there is a problem, to quickly diagnose the cause.

### The HP Data Vault

- Keeps your software up-to-date
- Secures your router
- Supports data encryption
- Accesses the status of firewall protection
- Arrives with 3 months of free McAfee Total Protection Service
- Offers easy configuration and management of user accounts
- Enforces a password creation policy (weak, medium, strong)

## TRY THIS

### Review the health of your network

- Open the Windows Home Server® Console. From a PC, double-click the HP Data Vault desktop shortcut and select the Windows Home Server® Console icon, or double-click the Windows Home Server® system tray icon, and log on. From a Mac, click on the HP Data Vault icon located in the Menu Bar and click "Launch Home Server Console."
- Click the Network tab in the top navigation bar. You will see a list of potential issues on your business network that require your attention.
- Click on the McAfee Total Protection tab to review common security tasks, scan your systems and view quarantined files.



Total protection and network health interfaces

### HP Resources

[www.hp.com/go/datavault](http://www.hp.com/go/datavault)  
One spot with all the product information you need.

1. Requires Digital Media Adapter (UPnP). Some files may be protected by a Digital Rights Management System, which may prevent the streaming of those files. Media files purchased and downloaded from Internet movie download sites are most likely protected. DVD movies cannot be streamed.
2. External hard disk drives are sold separately.
3. Amazon S3 online data storage service with subscription. For complete terms and conditions, including payment options for additional add-in services with Amazon S3, go to <http://aws.amazon.com/s3/>.
4. Internet service required and not included.
5. PC backup requires Windows XP, Windows Vista, or later operating systems. Mac backup requires the Time Machine software and Mac OS 10.5 or later.
6. To remotely access a home networked Windows PC, the home PC must be running Windows XP Professional, Windows XP Media Center, Windows XP Tablet, Windows Vista Ultimate, Windows Vista Business, or Windows Vista Enterprise.

For more information go to [www.hp.com/go/datavault](http://www.hp.com/go/datavault)

Microsoft and Windows are U.S. registered trademarks of Microsoft Corporation. Windows Home Server is either a registered trademark or trademark of Microsoft Corporation in the United States and/or other countries.

© 2009 Hewlett-Packard Development Company, L.P. The information contained herein is subject to change without notice. The only warranties for HP products and services are set forth in the express warranty statements accompanying such products and services. Nothing herein should be construed as constituting an additional warranty. HP shall not be liable for technical or editorial errors or omissions contained herein.





## Free Manuals Download Website

<http://myh66.com>

<http://usermanuals.us>

<http://www.somanuals.com>

<http://www.4manuals.cc>

<http://www.manual-lib.com>

<http://www.404manual.com>

<http://www.luxmanual.com>

<http://aubethermostatmanual.com>

Golf course search by state

<http://golfingnear.com>

Email search by domain

<http://emailbydomain.com>

Auto manuals search

<http://auto.somanuals.com>

TV manuals search

<http://tv.somanuals.com>