

SAM-HP SMH Cross Reference Guide

HP-UX 11i

HP Part Number: 5992-2899
Published: September 2008
Edition: 1.0



© Copyright 2008 Hewlett-Packard Development Company, L.P.

Legal Notices

Confidential computer software. Valid license from HP required for possession, use or copying. Consistent with FAR 12.211 and 12.212, Commercial Computer Software, Computer Software Documentation, and Technical Data for Commercial Items are licensed to the U.S. Government under vendor's standard commercial license.

The information contained herein is subject to change without notice. The only warranties for HP products and services are set forth in the express warranty statements accompanying such products and services. Nothing herein should be construed as constituting an additional warranty. HP shall not be liable for technical or editorial errors or omissions contained herein.

UNIX is a registered trademark of The Open Group.

Microsoft®, and Windows® are U.S. registered trademarks of Microsoft Corporation.

Linux is a U.S. registered trademark of Linus Torvalds.

Table of Contents

About this Document.....	7
Scope of this Document.....	7
Intended Audience.....	7
Typographic Conventions.....	7
Related Information.....	8
Publishing History.....	8
Product Support.....	8
HP Encourages Your Comments.....	8
1 HP System Management Homepage (HP SMH).....	9
About HP System Management Homepage.....	9
What's New in This Edition.....	9
Starting HP SMH.....	9
Starting HP SMH GUI.....	10
Starting HP SMH TUI.....	10
HP SMH Home Page.....	10
HP SMH Tools Page.....	11
2 Mapping SAM with HP SMH.....	13
Accounts for Users and Groups (ugweb).....	15
Auditing and Security Configuration (secweb).....	20
Disks and File Systems Configuration (fsweb).....	23
Kernel Configuration (kcweb).....	32
Networking and Communications (ncweb).....	34
Network Interfaces Configuration.....	34
Network Services Configuration.....	36
Peripheral Devices (pdweb).....	38
Printers and Plotters (lpweb).....	39

List of Figures

1-1	HP SMH Home Page.....	11
1-2	HP SMH Tools Page.....	12

List of Tables

1	Conventions.....	7
2	Publishing History.....	8
2-1	Mapping SAM with HP SMH: An Example.....	13
2-2	SAM-SMH Mapping – Accounts for Users and Groups.....	15
2-3	SAM-SMH Mapping – Auditing and Security Configuration.....	20
2-4	SAM-SMH Mapping – Disks and File Systems Configuration.....	23
2-5	SAM-SMH Mapping – Kernel Configuration.....	32
2-6	SAM-SMH Mapping – Network Interfaces Configuration.....	34
2-7	SAM-SMH Mapping – Network Services Configuration.....	36
2-8	SAM-SMH Mapping – Peripheral Devices.....	38
2-9	SAM-SMH Mapping – Printers and Plotters.....	39

About this Document

This document contains information that will help system administrators learn how the functionalities in System Administration Management (SAM) map with the functionalities in HP System Management Homepage (HP SMH). System Administrators who are currently using SAM for system management tasks can use this document to learn how to perform the same tasks using HP SMH.

The document publishing date and part number on the cover indicate the document's current edition. The publishing date and the part number changes when a new edition is published. Minor changes can be made at republish without changing the publishing date. The document part number changes when extensive changes are made.

The latest version of this document can be found at the HP Technical Documentation website <http://www.docs.hp.com>.

Scope of this Document

This cross reference guide addresses only functionalities that have been moved from SAM to HP SMH up to HP-UX March 2008 release. This guide does not cover the functional areas that are not part of SAM.

The functionalities in SAM and HP SMH are not mapped one-to-one. Hence, a functionality that is supported in the graphical user interface (GUI) of HP SMH might not be supported in the text user interface (TUI) of HP SMH.

Intended Audience

This document is intended for system administrators who want to use the HP-UX System Management Homepage (SMH) instead of the System Administration Management (SAM), which is deprecated HP-UX 11i v3 release onwards. Readers of this document must be familiar with HP-UX system administration.

Typographic Conventions

Table 1 Conventions

<code>%</code> , <code>\$</code> , or <code>#</code>	A percent sign represents the C shell system prompt. A dollar sign represents the system prompt for the Bourne, Korn, and POSIX shells. A number sign represents the superuser prompt.
<i>Book Title</i>	Title of a book or other document.
<code>command</code>	Command name or qualified command phrase.
<code>computer output</code>	Text displayed by the computer.
<code>ENVIRONMENT VARIABLE</code>	The name of an environment, for example, <code>PATH</code> .
<code>find(1)</code>	Manual page (manpage). In this example, "find" is the manpage name and "1" is the manpage section.
Key	The name of a keyboard key. Return and Enter both refer to the same key.
User input	Commands and other text that you type.
IMPORTANT	This alert provides essential information to explain a concept or to complete a task
NOTE	A note contains additional information to emphasize or supplement important points of the main text.

Related Information

In addition to this document, information about HP SMH can be found in the following documentation:

- Online help available with the respective SMH plug-ins
- The following documents on the HP Technical Documentation website at www.docs.hp.com
 - HP System Management Homepage Release Notes
 - HP System Management Homepage Installation Guide
 - *Simplifying single-system management on HP-UX 11i – HP System Management Homepage (HP SMH)*, a white paper
- HP System Management Homepage website at www.hp.com/go/smh
- The *hpsmh(1)*, *smhstartconfig(1)*, *smh(1)*, and *sam(1)* manpages

Publishing History

Table 2 Publishing History

Manufacturing Part Number	Document Edition	Publication Date
5992-2899	1.0	September 2008

Product Support

For product support, contact your HP Support Representative, your HP Services Representative, or your authorized HP reseller. For more information about support services, see the HP Support web site at <http://www.hp.com/go/support>.

HP Encourages Your Comments

HP encourages your comments on this document. We are committed to providing documentation that meets your needs. Please send your comments to:

docsfeedback@hp.com

Please include the following information:

- Document title (*SAM–HP SMH Cross Reference Guide*)
- Manufacturing part number (HP Part Number)
- Any comment, error found, or suggestion for improvement you have about this document.

1 HP System Management Homepage (HP SMH)

This chapter provides a brief introduction to HP SMH, describes what is new in this edition of the document, describes how to start SMH, and briefly introduces the SMH Home page and SMH Tools page.

This chapter addresses the following topics:

- “About HP System Management Homepage” (page 9)
- “What’s New in This Edition” (page 9)
- “Starting HP SMH” (page 9)
- “HP SMH Home Page” (page 10)
- “HP SMH Tools Page” (page 11)

About HP System Management Homepage

HP System Management Homepage (HP SMH) is a single system management solution for managing HP-UX 11i. It also supports Linux and Microsoft Windows systems.



NOTE: System Administration Manager (SAM) is deprecated in HP-UX 11i v3. HP System Management Homepage (HP SMH), an enhanced version of SAM, is introduced for managing HP-UX. HP SMH provides Graphical User Interface (GUI), Text User Interface (TUI), and Command-Line Interface (CLI) for managing HP-UX.

The key features of HP SMH include system administration capabilities and the ability to display detailed information about hardware attributes. HP SMH provides an easy-to-use interface for displaying hardware fault and status monitoring, system thresholds, diagnostics, and software version control for an individual server by aggregating the data from HP web-based agents and management utilities.

HP SMH integrates with HP Systems Insight Manager (HP SIM), the strategic platform for multi-systems management from HP. HP Systems Insight Manager communicates with HP System Management Homepage to track server health and performance, and to maintain up-to-date server inventory data. The integration also supports group configuration and setup via HP SIM. When used in conjunction with HP SIM, alerts may be transmitted to appropriate individuals via e-mail or pager notification. For more information about HP SIM, visit the HP Systems Insight Manager web site at <http://www.hp.com/go/hpsim>.

For more information on the features and benefits of HP SMH, see the *Simplifying single-system management on HP-UX 11i – HP System Management Homepage (HP SMH)* white paper available at www.docs.hp.com

What's New in This Edition

This is the first edition of the document. This edition covers the functionalities in SAM that are now available in HP SMH on HP-UX systems.

Starting HP SMH

This chapter describes how to start SMH on an HP-UX system. You can access the SMH GUI and TUI interfaces using the `smh` command (`/usr/sbin/smh`). In HP-UX 11i v3, you can also use the `sam` command, which functions the same way as the `smh` command, except that the deprecation message is displayed in the beginning.



NOTE: The `smh` command is available only in HP-UX 11i v3 February 2007 release and later. The procedures in this section are applicable to HP-UX 11i v3 systems. In HP-UX 11i v1 and HP-UX 11i v2 systems, the `sam` command remains the primary interface.

Starting HP SMH GUI

Follow this procedure to open the HP SMH GUI using the `smh` command:

1. Log in to the system.
2. Set the `DISPLAY` environment variable.
3. At the command prompt, enter `sam` or `smh`.

The application opens in the default web browser.

Follow this procedure to open the HP SMH GUI using a web browser:

1. Open a web browser.
2. In the address bar, enter the complete host name and the port number, for example, `http://hostname.com:2301`
3. Log in to HP SMH GUI by entering your user name and password.

Starting HP SMH TUI

Follow this procedure to open the HP SMH TUI:

1. Log in to the system.
2. At the command prompt, enter `sam` or `smh`.

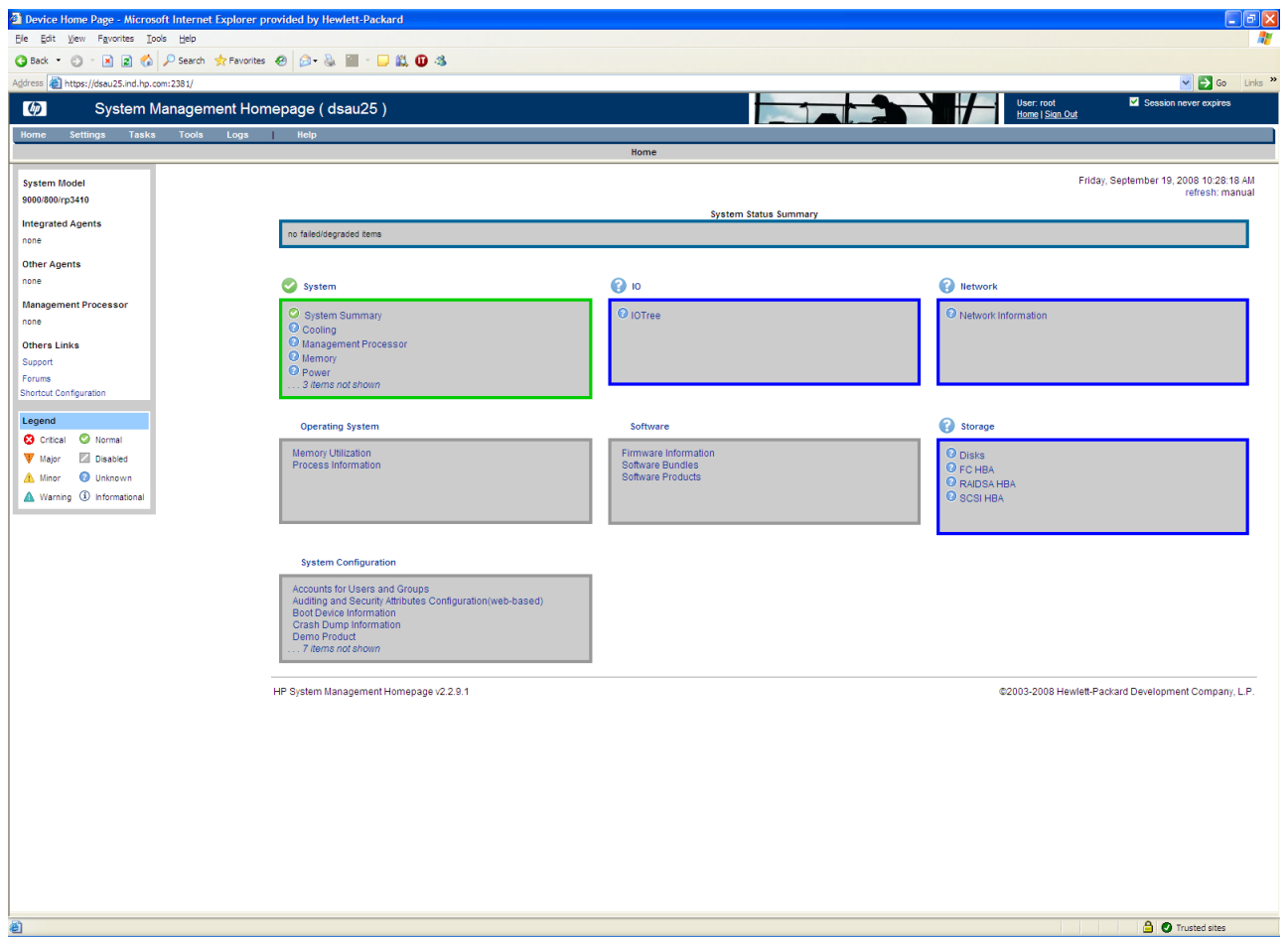
The SMH TUI opens.

Text-based HP SMH supports only the C (English) locale. HP recommends that you set your locale variables, such as `LANG` and `LC_ALL`, to C. Most functional areas in web-based HP SMH support multi-byte locales.

HP SMH Home Page

The HP SMH home page displays information about the health of the system. The page also provides links under **System Configuration** to open few of the plug-ins (functional areas) supported by the application, links under **Operating System** for information about operating system, links under **Software** to obtain information about software products and bundles installed on the system. Figure 1-1 (page 11) shows an image of SMH Home page on an HP-UX system.

Figure 1-1 HP SMH Home Page

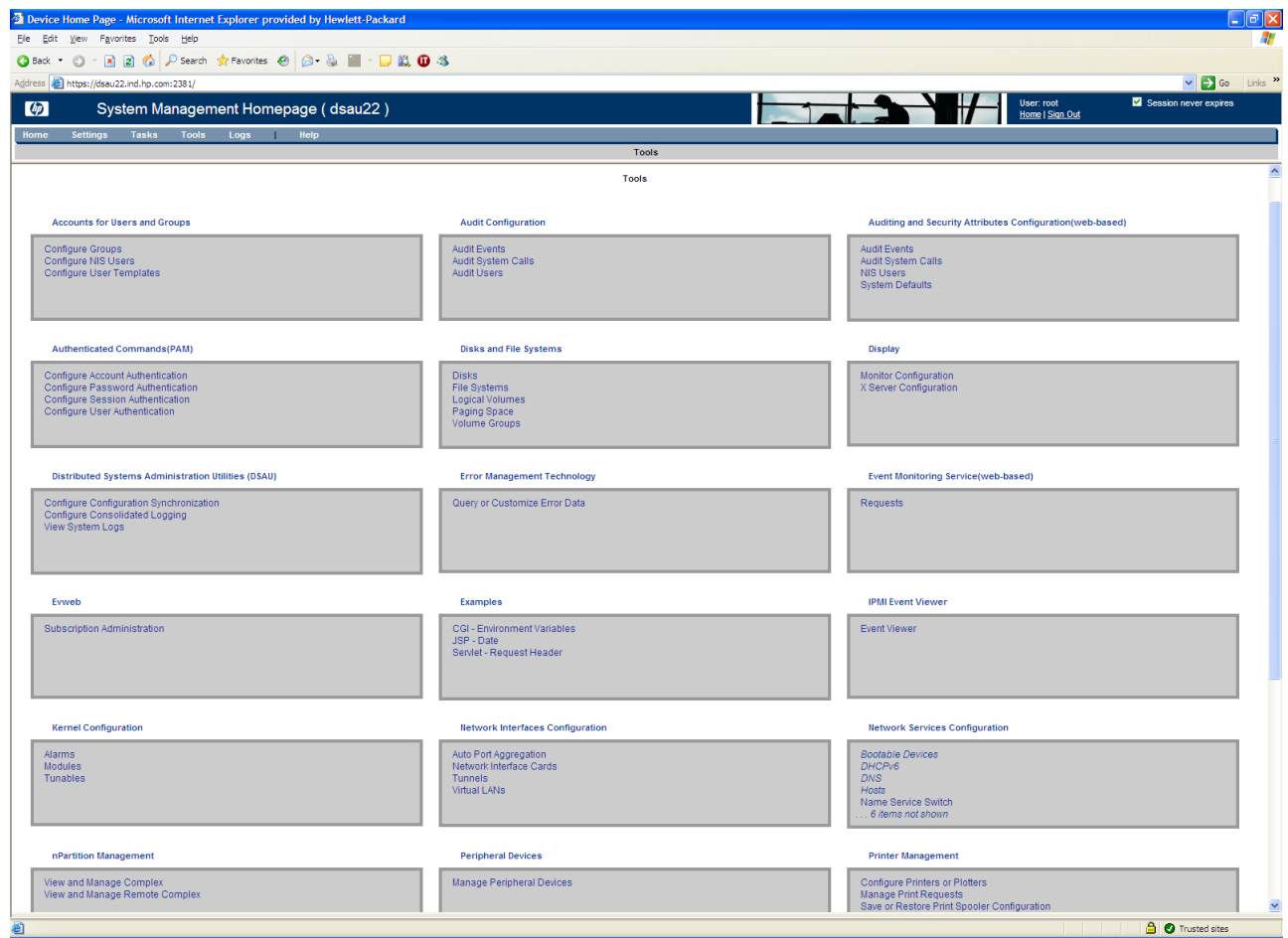


For more information about HP SMH Home page, see the *HP System Management Homepage* help provided with the product.

HP SMH Tools Page

The Tools page provides a point of entry to the management plug-in applications that are analogous to the System Administration Manager (SAM) main page, also known as the SAM Functional Area Launcher (or FAL). For HP-UX this also includes categories and menus for several X-based management applications. Figure 1-2 (page 12) shows an image of SMH Tools page on an HP-UX system.

Figure 1-2 HP SMH Tools Page



Following are the links that you might see on the Tools page (listed here in alphabetical order):

- Accounts for Users and Groups
- Audit Configuration
- Authenticated Commands (PAM)
- Disks and File Systems
- Distributed Systems Administration Utilities (DSAU)
- Evweb
- IPMI
- Event Viewer
- Kernel Configuration
- Networking and Communications
- nPartition Management
- Peripheral Devices
- Printer Management
- Resource Management
- Resource Monitors
- Serviceguard
- Software Management
- Time

For more information about the HP SMH Tools page, see the *HP System Management Homepage* help provided with the product.

2 Mapping SAM with HP SMH

This chapter describes the steps to reach the point in the application where you can perform the respective administration task. This chapter is organized in to sections based on the functional areas. For every functional area a table outlines the steps for SAM GUI, HP SMH GUI, and HP SMH TUI.

How to read the tables in this chapter

For every functional area a table presents high-level steps to reach the page where you can perform the administration task. The table has four columns. Following is a description of what information each column presents:

- **Task:** This is the name of the task.
- **Using SAM:** This column explains how to reach the window where you can perform the task in the SAM application.
- **Using HP SMH GUI:** This column provides a shortened version of the steps to reach the web page where you can perform the same task in the web-based graphical user interface (GUI) of HP SMH.
- **Using HP SMH TUI:** This column provides a shortened version of the steps to reach the window where you can perform the same task in the text user interface (TUI) of HP SMH.

Here's an example of how the navigation is described for a task.

Table 2-1 Mapping SAM with HP SMH: An Example

Task	Using SAM	Using HP SMH GUI	Using HP SMH TUI
Adding a local user	<ol style="list-style-type: none">1. SAM Areas2. Accounts for Users and Groups3. Users4. Actions5. Add	<ol style="list-style-type: none">1. Tools2. Accounts for Users and Groups3. Configure Local Users4. Local Users5. Add User Account	#smh u > 1 > a

Here, the task is *Adding a local user account*.

The column **Using SAM** describes in short how to navigate in SAM to reach the window where you can add a local user account.

The column **Using HP SMH GUI** provides a shortened version of the steps to navigate in the web-based user interface of HP SMH to reach the web page where you can add a local user account. The steps must be read as follows: Click Tools in the SMH home page. Then, in the Tools page that appears, click Accounts for Users and Groups. In the Accounts for Users and Groups page, click Configure Local Users. In the page that appears, click Local Users and then click Add User Account.

The column **Using HP SMH TUI** provides a shortened version of the steps to navigate in the text/terminal user interface of HP SMH to reach the window where you can add a local user account. The steps must be read as follows: At the command prompt, enter the smh command. The SMH TUI opens. In the list of applications that is displayed select the Accounts for Users and Groups by pressing the u key. In the window that appears, select Local Users by pressing the 1 key. Then, select Add Local User by pressing the a key.

This chapter addresses the following topics:

- “Accounts for Users and Groups (ugweb)” (page 15)
- “Auditing and Security Configuration (secweb)” (page 20)
- “Disks and File Systems Configuration (fsweb)” (page 23)
- “Kernel Configuration (kcweb)” (page 32)

- “Networking and Communications (ncweb)” (page 34)
“Network Interfaces Configuration” (page 34)
“Network Services Configuration” (page 36)
- “Peripheral Devices (pdweb)” (page 38)
- “Printers and Plotters (lpweb)” (page 39)

Accounts for Users and Groups (ugweb)

Table 2-2 SAM-SMH Mapping – Accounts for Users and Groups

Task	Using SAM	Using HP SMH GUI	Using HP SMH TUI
Adding a local user	<ol style="list-style-type: none"> 1. SAM Areas 2. Accounts for Users and Groups 3. Users 4. Actions 5. Add 	<ol style="list-style-type: none"> 1. Tools 2. Accounts for Users and Groups 3. Configure Local Users 4. Local Users 5. Add User Account 	#smh u > 1 > a
Viewing details of a local user account	<ol style="list-style-type: none"> 1. SAM Areas 2. Accounts for Users and Groups 3. Users 4. Select a user 5. Actions 6. View More Information 	<ol style="list-style-type: none"> 1. Tools 2. Accounts for Users and Groups 3. Configure Local Users 4. Local Users 5. Select a user using the checkbox 	#smh u > 1 > Select a user > Enter
Modifying a local user account	<ol style="list-style-type: none"> 1. SAM Areas 2. Accounts for Users and Groups 3. Users 4. Select a user 5. Actions 6. Modify 	<ol style="list-style-type: none"> 1. Tools 2. Accounts for Users and Groups 3. Configure Local Users 4. Local Users 5. Select a user using the checkbox 6. Modify User Account 	#smh u > 1 > Select a user > m
Modifying password	<ol style="list-style-type: none"> 1. SAM Areas 2. Accounts for Users and Groups 3. Users 4. Select a user 5. Actions 6. Modify User's Password 	<ol style="list-style-type: none"> 1. Tools 2. Accounts for Users and Groups 3. Configure Local Users 4. Local Users 5. Select a user using the checkbox 6. Modify Password 	#smh u > 1 > Select a user > p
Modifying membership to secondary groups	<ol style="list-style-type: none"> 1. SAM Areas 2. Accounts for Users and Groups 3. Users 4. Select a user 5. Actions 6. Modify Secondary Group Membership 	<ol style="list-style-type: none"> 1. Tools 2. Accounts for Users and Groups 3. Configure Local Users 4. Local Users 5. Select a user using the checkbox 6. Modify Secondary Groups 	#smh u > 1 > Select a user > g

Table 2-2 SAM-SMH Mapping – Accounts for Users and Groups *(continued)*

Task	Using SAM	Using HP SMH GUI	Using HP SMH TUI
Modifying security attributes	<p>In the case of trusted system</p> <ol style="list-style-type: none"> SAM Areas Accounts for Users and Groups Users Select a user Actions Modify Security Policies <p>In the case of standard (non-trusted) system</p> <ol style="list-style-type: none"> SAM Areas Security Attributes Configuration (character mode) 1 Select a user Enter c 	<ol style="list-style-type: none"> Tools Accounts for Users and Groups Configure Local Users Local Users Select a user using the checkbox Modify Security Attributes 	#smh u > 1 > Select a user > s
Customizing tasks	<ol style="list-style-type: none"> SAM Areas Accounts for Users and Groups Users Actions Task Customization 	<ol style="list-style-type: none"> Tools Accounts for Users and Groups Configure Local Users Task Customization 	#smh u > 1 > Select a user > t
Deleting a local user account	<ol style="list-style-type: none"> SAM Areas Accounts for Users and Groups Users Select a user Actions Remove 	<ol style="list-style-type: none"> Tools Accounts for Users and Groups Configure Local Users Local Users Select a user using the checkbox Delete User Account 	#smh u > 1 > Select a user > r
Enabling a local user account	<ol style="list-style-type: none"> SAM Areas Accounts for Users and Groups Users Select a user Actions Reactivate 	<ol style="list-style-type: none"> Tools Accounts for Users and Groups Configure Local Users Local Users Select a user using the checkbox Enable User Account 	#smh u > 1 > Select a user > e
Disabling a local user account	<ol style="list-style-type: none"> SAM Areas Accounts for Users and Groups Users Select a user Actions Deactivate 	<ol style="list-style-type: none"> Tools Accounts for Users and Groups Configure Local Users Local Users Select a user using the checkbox Disable User Account 	#smh u > 1 > Select a user > d

Table 2-2 SAM-SMH Mapping – Accounts for Users and Groups (continued)

Task	Using SAM	Using HP SMH GUI	Using HP SMH TUI
Viewing details of an NIS user account	<ol style="list-style-type: none"> SAM Areas Accounts for Users and Groups NIS Users Select a user Actions View More Information 	<ol style="list-style-type: none"> Tools Accounts for Users and Groups Configure NIS Users NIS Users Select a user using the checkbox 	#smh u > n > Select a user > Enter
Adding an NIS user account	<ol style="list-style-type: none"> SAM Areas Accounts for Users and Groups NIS Users Actions Add 	<ol style="list-style-type: none"> Tools Accounts for Users and Groups Configure NIS Users NIS Users Add User Account 	#smh u > n > a
Updating NIS Maps	<ol style="list-style-type: none"> SAM Areas Accounts for Users and Groups NIS Users Actions Update NIS Maps 	<ol style="list-style-type: none"> Tools Accounts for Users and Groups Configure NIS Users NIS Users Update NIS Maps 	#smh u > n > n
Modifying an NIS user account	<ol style="list-style-type: none"> SAM Areas Accounts for Users and Groups NIS Users Select a user Actions Modify 	<ol style="list-style-type: none"> Tools Accounts for Users and Groups Configure NIS Users NIS Users Select a user using the checkbox Modify User Account 	#smh u > n > Select a user > m
Modifying password	<ol style="list-style-type: none"> SAM Areas Accounts for Users and Groups NIS Users Select a user Actions Modify User's Password 	<ol style="list-style-type: none"> Tools Accounts for Users and Groups Configure NIS Users NIS Users Select a user using the checkbox Modify Password 	#smh u > n > Select a user > p
Modifying membership to secondary groups	<ol style="list-style-type: none"> SAM Areas Accounts for Users and Groups NIS Users Select a user Actions Modify Secondary Group Membership 	<ol style="list-style-type: none"> Tools Accounts for Users and Groups Configure NIS Users NIS Users Select a user using the checkbox Modify Secondary Groups 	#smh u > n > Select a user > g
Modifying security attributes	<ol style="list-style-type: none"> SAM Areas Accounts for Users and Groups NIS Users Select a user Actions Modify 	<ol style="list-style-type: none"> Tools Accounts for Users and Groups Configure NIS Users NIS Users Select a user using the checkbox Modify Security Attributes 	#smh u > n > Select a user > s

Table 2-2 SAM-SMH Mapping – Accounts for Users and Groups (continued)

Task	Using SAM	Using HP SMH GUI	Using HP SMH TUI
Customizing tasks	<ol style="list-style-type: none"> SAM Areas Accounts for Users and Groups NIS Users Actions Task Customization 	<ol style="list-style-type: none"> Tools Accounts for Users and Groups Configure NIS Users NIS Users Select a user using the checkbox Task Customization 	#smh u > n > Select a user > t
Deleting an NIS user account	<ol style="list-style-type: none"> SAM Areas Accounts for Users and Groups NIS Users Select a user Actions Remove 	<ol style="list-style-type: none"> Tools Accounts for Users and Groups Configure NIS Users NIS Users Select a user using the checkbox Delete User Account 	#smh u > n > Select a user > r
Enabling an NIS user account	<ol style="list-style-type: none"> SAM Areas Accounts for Users and Groups NIS Users Select a user Actions Reactivate 	<ol style="list-style-type: none"> Tools Accounts for Users and Groups Configure NIS Users NIS Users Select a user using the checkbox Enable User Account 	#smh u > n > Select a user > e
Viewing details of group	<ol style="list-style-type: none"> SAM Areas Accounts for Users and Groups Groups Select a group Actions View More Information 	<ol style="list-style-type: none"> Tools Accounts for Users and Groups Configure Groups Groups Select a group using the checkbox 	#smh u > g > Select a group > Enter
Adding a group	<ol style="list-style-type: none"> SAM Areas Accounts for Users and Groups Groups Actions Add 	<ol style="list-style-type: none"> Tools Accounts for Users and Groups Configure Groups Add New Group 	#smh u > g > a
Modifying a group	<ol style="list-style-type: none"> SAM Areas Accounts for Users and Groups Groups Select a group Actions Modify 	<ol style="list-style-type: none"> Tools Accounts for Users and Groups Configure Groups Groups Select a group using the checkbox Modify Group 	#smh u > g > Select a group > m
Deleting a group	<ol style="list-style-type: none"> SAM Areas Accounts for Users and Groups Groups Select a group Actions Remove 	<ol style="list-style-type: none"> Tools Accounts for Users and Groups Configure Groups Groups Select a group using the checkbox Delete Group 	#smh u > g > Select a group > r

Table 2-2 SAM-SMH Mapping – Accounts for Users and Groups (continued)

Task	Using SAM	Using HP SMH GUI	Using HP SMH TUI
Viewing details of a user template	<ol style="list-style-type: none"> SAM Areas Accounts for Users and Groups Templates Select a template Actions View More Information 	<ol style="list-style-type: none"> Tools Accounts for Users and Groups Configure User Templates User Templates Select a template using the checkbox 	#smh u > t > Select a template > Enter
Adding a user template	<ol style="list-style-type: none"> SAM Areas Accounts for Users and Groups Templates Actions Add 	<ol style="list-style-type: none"> Tools Accounts for Users and Groups Configure User Templates Add User Template 	#smh u > t > a
Modifying a user template	<ol style="list-style-type: none"> SAM Areas Accounts for Users and Groups Templates Select a template Actions Modify 	<ol style="list-style-type: none"> Tools Accounts for Users and Groups Configure User Templates User Templates Select a template using the checkbox Modify User Template 	#smh u > t > Select a template > m
Applying a user template	<ol style="list-style-type: none"> SAM Areas Accounts for Users and Groups Templates Actions Apply 	<ol style="list-style-type: none"> Tools Accounts for Users and Groups Configure User Templates User Templates Select a template using the checkbox Apply User Template 	#smh u > t > Select a template > s
Deleting user template	<ol style="list-style-type: none"> SAM Areas Accounts for Users and Groups Templates Actions Remove 	<ol style="list-style-type: none"> Tools Accounts for Users and Groups Configure User Templates User Templates Select a template using the checkbox Delete User Template 	#smh u > t > Select a template > r
Discarding an active user template	<ol style="list-style-type: none"> SAM Areas Accounts for Users and Groups Templates Actions Discard Active User Template 	<ol style="list-style-type: none"> Tools Accounts for Users and Groups Configure User Templates User Templates Select a template using the checkbox Discard Active User Template 	#smh u > t > Select the active template > d

Auditing and Security Configuration (secweb)

Table 2-3 SAM-SMH Mapping – Auditing and Security Configuration

Task	Using SAM	Using HP SMH GUI	Using HP SMH TUI
Viewing audit log	<ol style="list-style-type: none"> SAM Areas Auditing and Security Audited Events Actions View Audit Log 	<ol style="list-style-type: none"> Tools Auditing and Security Attributes Configuration Audit Events View Audit Log 	#smh c > v
Turning auditing on	<ol style="list-style-type: none"> SAM Areas Auditing and Security Audited Events Turn Auditing ON 	<ol style="list-style-type: none"> Tools Auditing and Security Attributes Configuration Audit Events Turn Auditing ON 	#smh c > o
Turning auditing off	<ol style="list-style-type: none"> SAM Areas Auditing and Security Audited Events Turn Auditing OFF 	<ol style="list-style-type: none"> Tools Auditing and Security Attributes Configuration Audit Events Turn Auditing OFF 	#smh c > f
Setting audit monitor and log parameters	<ol style="list-style-type: none"> SAM Areas Auditing and Security Audited Events Set Audit Monitor and Log Parameters 	<ol style="list-style-type: none"> Tools Auditing and Security Attributes Configuration Audit Events Set Audit Monitor and Log Parameters 	# smh c > p
Auditing an event on success	<ol style="list-style-type: none"> SAM Areas Auditing and Security Audited Events Select an event Actions Audit for Success Only 	<ol style="list-style-type: none"> Tools Auditing and Security Attributes Configuration Audit Events Select an event category Audit Success Only 	#smh c > e > Select an event > Enter > s
Auditing an event on failure	<ol style="list-style-type: none"> SAM Areas Auditing and Security Audited Events Select an event Actions Audit for Failure Only 	<ol style="list-style-type: none"> Tools Auditing and Security Attributes Configuration Audit Events Select an event category Audit Failure Only 	#smh c > e > Select an event > Enter > f
Auditing an event on success and failure	<ol style="list-style-type: none"> SAM Areas Auditing and Security Audited Events Select an event Actions Audit Both Success and Failure 	<ol style="list-style-type: none"> Tools Auditing and Security Attributes Configuration Audit Events Select an event category Audit Both Success and Failure 	#smh c > e > Select an event > Enter > b

Table 2-3 SAM-SMH Mapping – Auditing and Security Configuration (continued)

Task	Using SAM	Using HP SMH GUI	Using HP SMH TUI
Auditing an event for neither success or failure	<ol style="list-style-type: none"> SAM Areas Auditing and Security Audited Events Select an event Actions Audit Neither Success Nor Failure 	<ol style="list-style-type: none"> Tools Auditing and Security Attributes Configuration Audit Events Select an event category Audit Neither Success Nor Failure 	#smh — c > e > Select an event > Enter > n
Auditing a system call on success	<ol style="list-style-type: none"> SAM Areas Auditing and Security Audited System Calls Select an system call Actions Audit for Success Only 	<ol style="list-style-type: none"> Tools Auditing and Security Attributes Configuration Audit System Calls Select a system call Audit Success Only 	#smh — c > c > Select a system call > Enter > s
Auditing a system call on failure	<ol style="list-style-type: none"> SAM Areas Auditing and Security Audited System Calls Select an system call Actions Audit for Failure Only 	<ol style="list-style-type: none"> Tools Auditing and Security Attributes Configuration Audit System Calls Select a system call Audit Failure Only 	#smh — c > c > Select a system call > Enter > f
Auditing a system call on success and failure	<ol style="list-style-type: none"> SAM Areas Auditing and Security Audited System Calls Select an system call Actions Audit Both Success and Failure 	<ol style="list-style-type: none"> Tools Auditing and Security Attributes Configuration Audit System Calls Select a system call Audit Both Success and Failure 	#smh — c > c > Select a system call > Enter > b
Auditing a system call for neither success or failure	<ol style="list-style-type: none"> SAM Areas Auditing and Security Audited System Calls Select an system call Actions Audit Neither Success Nor Failure 	<ol style="list-style-type: none"> Tools Auditing and Security Attributes Configuration Audit System Calls Select a system call Audit Neither Success Nor Failure 	#smh — c > c > Select a system call > Enter > n

Table 2-3 SAM-SMH Mapping – Auditing and Security Configuration *(continued)*

Task	Using SAM	Using HP SMH GUI	Using HP SMH TUI
Auditing a user	<ol style="list-style-type: none"> 1. SAM Areas 2. Auditing and Security 3. Audited Users 4. Select a user 5. Actions 6. Audit User 	<ol style="list-style-type: none"> 1. Tools 2. Auditing and Security Attributes Configuration 3. Local Users 4. Select a user 5. Configure Per User Exceptions 	<p>#smh</p> <p>c > 1 > Select a user > Enter > c</p>
Removing a user from auditing	<ol style="list-style-type: none"> 1. SAM Areas 2. Auditing and Security 3. Audited Users 4. Select a user 5. Actions 6. Don't Audit User 	<ol style="list-style-type: none"> 1. Tools 2. Auditing and Security Attributes Configuration 3. Local Users 4. Select a user 5. Configure Per User Exceptions 	<p>#smh</p> <p>c > 1 > Select a user > Enter > c</p>

Disks and File Systems Configuration (fswb)

Table 2-4 SAM-SMH Mapping – Disks and File Systems Configuration

Task	Using SAM	Using HP SMH GUI	Using HP SMH TUI
Viewing details of disk device	<ol style="list-style-type: none"> SAM Areas Disks and File Systems Disk Devices Select device Actions View More InformationUser 	<ol style="list-style-type: none"> Tools Disks and File Systems Disks Select a device 	#smh f > d > Select disk > Enter
Configuring disk device using the Logical Volume Manager	<ol style="list-style-type: none"> SAM Areas Disks and File Systems Disk Devices Select device Actions Configure Using the Logical Volume Manager 	<ol style="list-style-type: none"> Tools Disks and File Systems Disks Select a device Set LUN Attributes 	#smh f > d > Select disk > Enter > a
Configuring disk device not using the Logical Volume Manager	<ol style="list-style-type: none"> SAM Areas Disks and File Systems Disk Devices Select device Actions Configure Not using the Logical Volume Manager 	<ol style="list-style-type: none"> Tools Disks and File Systems File Systems Add File System Add HFS VxFS Select unused disk 	#smh f > h v c > Select unused disk
Marking disk as used	<ol style="list-style-type: none"> SAM Areas Disks and File Systems Disk Devices Select device Actions Mark Disk as Used 	<ol style="list-style-type: none"> Tools Disks and File Systems Disks Select a device Mark Disk as Used 	#smh f > d > Select disk > Enter > m
Annotating a device	<ol style="list-style-type: none"> SAM Areas Disks and File Systems Disk Devices Select device Actions Annotate Device 	<ol style="list-style-type: none"> Tools Disks and File Systems Disks Select a device Set Device Identifier 	#smh f > d > Select disk > Enter > i
Opening Veritas Enterprise Administrator	<ol style="list-style-type: none"> SAM Areas Disks and File Systems Disk Devices Actions Run Veritas Enterprise Administrator 	<ol style="list-style-type: none"> Tools Disks and File Systems Disks Veritas Enterprise Administrator 	Currently not supported

Table 2-4 SAM-SMH Mapping – Disks and File Systems Configuration (continued)

Task	Using SAM	Using HP SMH GUI	Using HP SMH TUI
Diagnosing missing disk	<ol style="list-style-type: none"> SAM Areas Disks and File Systems Disk Devices Select device Actions Diagnose Missing Disk 	<ol style="list-style-type: none"> Tools Disks and File Systems Disks Refresh 	#smh f > d > r
Adding local file system	<ol style="list-style-type: none"> SAM Areas Disks and File Systems File Systems Actions Add Local File System Using the Logical Volume Manager 	<ol style="list-style-type: none"> Tools Disks and File Systems File Systems Add File System Add HFS VxFS CDFS NFS CIFS CacheFS 	#smh f > f > h v c n I a
Adding remote file system	<ol style="list-style-type: none"> SAM Areas Disks and File Systems File Systems Actions Add Remote File System Using NFS 	<ol style="list-style-type: none"> Tools Disks and File Systems File Systems Add File System Add HFS VxFS CDFS NFS CIFS CacheFS 	#smh f > f > h v c n I a
Disabling the automounter	<ol style="list-style-type: none"> SAM Areas Disks and File Systems File Systems Actions Disable Automounter 	<ol style="list-style-type: none"> Tools Disks and File Systems File Systems Toggle Automounter Status 	Currently not supported
Opening Veritas Enterprise Administrator	<ol style="list-style-type: none"> SAM Areas Disks and File Systems File Systems Actions Run Veritas Enterprise Administrator 	<ol style="list-style-type: none"> Tools Disks and File Systems File Systems Veritas Enterprise Administrator 	Currently not supported
Viewing details of a file system	<ol style="list-style-type: none"> SAM Areas Disks and File Systems File Systems Select a file system Actions View More Information 	<ol style="list-style-type: none"> Tools Disks and File Systems File Systems Select a file system 	#smh f > f > Select a file system > Enter

Table 2-4 SAM-SMH Mapping – Disks and File Systems Configuration (continued)

Task	Using SAM	Using HP SMH GUI	Using HP SMH TUI
Modifying a file system	<ol style="list-style-type: none"> 1. SAM Areas 2. Disks and File Systems 3. File Systems 4. Select a file system 5. Actions 6. Modify 	<ol style="list-style-type: none"> 1. Tools 2. Disks and File Systems 3. File Systems 4. Select a file system 5. Modify <file system type> 	#smh f > f > Select a file system > m
Removing a file system	<ol style="list-style-type: none"> 1. SAM Areas 2. Disks and File Systems 3. File Systems 4. Select a file system 5. Actions 6. Remove 	<ol style="list-style-type: none"> 1. Tools 2. Disks and File Systems 3. File Systems 4. Select a file system 5. Unmount/Remove 	#smh f > f > Select a file system > Enter > u
Creating a snapshot	<ol style="list-style-type: none"> 1. SAM Areas 2. Disks and File Systems 3. File Systems 4. Select a file system 5. Actions 6. VxFS Maintenance 7. Create Snapshot 	<ol style="list-style-type: none"> 1. Tools 2. Disks and File Systems 3. File Systems 4. Select a file system 5. Modify VxFS 	#smh f > f > Select a file system > Enter > c
Viewing extent fragmentation report	<ol style="list-style-type: none"> 1. SAM Areas 2. Disks and File Systems 3. File Systems 4. Select a file system 5. Actions 6. VxFS Maintenance 7. View Extent Fragmentation Report 	<ol style="list-style-type: none"> 1. Tools 2. Disks and File Systems 3. File Systems 4. Select a file system 5. View Extents Fragmentation 	#smh f > f > Select a file system > Enter > v
Viewing directory fragmentation report	<ol style="list-style-type: none"> 1. SAM Areas 2. Disks and File Systems 3. File Systems 4. Select a file system 5. Actions 6. VxFS Maintenance 7. View Directory Fragmentation Report 	<ol style="list-style-type: none"> 1. Tools 2. Disks and File Systems 3. File Systems 4. Select a file system 5. View Directory Fragmentation 	#smh f > f > Select a file system > Enter > v
Reorganizing extents	<ol style="list-style-type: none"> 1. SAM Areas 2. Disks and File Systems 3. File Systems 4. Select a file system 5. Actions 6. VxFS Maintenance 7. Reorganize Extents 	<ol style="list-style-type: none"> 1. Tools 2. Disks and File Systems 3. File Systems 4. Select a file system 5. Defragment Extents 	#smh f > f > Select a file system > Enter > e

Table 2-4 SAM-SMH Mapping – Disks and File Systems Configuration (continued)

Task	Using SAM	Using HP SMH GUI	Using HP SMH TUI
Reorganizing directories	<ol style="list-style-type: none"> SAM Areas Disks and File Systems File Systems Select a file system Actions VxFS Maintenance Reorganize Directories 	<ol style="list-style-type: none"> Tools Disks and File Systems File Systems Select a file system Defragment Directories 	#smh — f > f > Select a file system > Enter > d
Upgrading Veritas file system	<ol style="list-style-type: none"> SAM Areas Disks and File Systems File Systems Select a file system Actions VxFS Maintenance Upgrade VxFS 	<ol style="list-style-type: none"> Tools Disks and File Systems File Systems Select a file system Upgrade VxFS 	#smh — f > f > Select a file system > Enter > p
Creating a logical volume	<ol style="list-style-type: none"> SAM Areas Disks and File Systems Logical Volumes Actions Create 	<ol style="list-style-type: none"> Tools Disks and File Systems Logical Volumes Select a file system Create LV 	#smh — f > 1 > c
Viewing details of a logical volume	<ol style="list-style-type: none"> SAM Areas Disks and File Systems Logical Volumes Select a file system Actions View More Information 	<ol style="list-style-type: none"> Tools Disks and File Systems Logical Volumes Select a logical volume 	#smh — f > 1 > Select a logical volume > Enter
Modifying a logical volume	<ol style="list-style-type: none"> SAM Areas Disks and File Systems Logical Volumes Select a file system Actions Modify 	<ol style="list-style-type: none"> Tools Disks and File Systems Logical Volumes Select a logical volume Modify LV 	#smh — f > 1 > Select a logical volume > Enter > m
Removing a logical volume	<ol style="list-style-type: none"> SAM Areas Disks and File Systems Logical Volumes Select a file system Actions Remove 	<ol style="list-style-type: none"> Tools Disks and File Systems Logical Volumes Select a logical volume Remove LV 	#smh — f > 1 > Select a logical volume > Enter > w

Table 2-4 SAM-SMH Mapping – Disks and File Systems Configuration (continued)

Task	Using SAM	Using HP SMH GUI	Using HP SMH TUI
Marking logical volume with user defined usage	<ol style="list-style-type: none"> SAM Areas Disks and File Systems Logical Volumes Select a file system Actions Mark LV with User Defined Usage 	<ol style="list-style-type: none"> Tools Disks and File Systems Logical Volumes Select a logical volume Marking LV as Used 	#smh f > 1 > Select a logical volume > Enter > u
Modifying or removing user defined usage	<ol style="list-style-type: none"> SAM Areas Disks and File Systems Logical Volumes Select a file system Actions Change/Remove User Defined Usage 	<ol style="list-style-type: none"> Tools Disks and File Systems Logical Volumes Select a logical volume Modify LV Usage 	#smh f > 1 > Select a logical volume > Enter > u
Increasing the size of a logical volume	<ol style="list-style-type: none"> SAM Areas Disks and File Systems Logical Volumes Select a file system Actions Increase Size 	<ol style="list-style-type: none"> Tools Disks and File Systems Logical Volumes Select a logical volume Extend LV 	#smh f > 1 > Select a logical volume > Enter > e
Changing the number of mirror copies of a logical volume	<ol style="list-style-type: none"> SAM Areas Disks and File Systems Logical Volumes Select a file system Actions Change Number of Mirror Copies 	<ol style="list-style-type: none"> Tools Disks and File Systems Logical Volumes Select a logical volume Add Mirrors 	#smh f > 1 > Select a logical volume > Enter > a
Splitting the copy of a mirror offline	<ol style="list-style-type: none"> SAM Areas Disks and File Systems Logical Volumes Select a file system Actions Split a Mirror Copy Offline 	<ol style="list-style-type: none"> Tools Disks and File Systems Logical Volumes Select a logical volume Split LV 	#smh f > 1 > Select a logical volume > Enter > s
Merging back the offline copy of a mirror online	<ol style="list-style-type: none"> SAM Areas Disks and File Systems Logical Volumes Select a file system Actions Merge Offline Mirror Copy Back Online 	<ol style="list-style-type: none"> Tools Disks and File Systems Logical Volumes Select a logical volume Merge LV 	#smh f > 1 > Select a logical volume > Enter > g

Table 2-4 SAM-SMH Mapping – Disks and File Systems Configuration (continued)

Task	Using SAM	Using HP SMH GUI	Using HP SMH TUI
Opening Veritas Enterprise Administrator	<ol style="list-style-type: none"> SAM Areas Disks and File Systems Logical Volumes Actions Run Veritas Enterprise Administrator 	<ol style="list-style-type: none"> Tools Disks and File Systems Logical Volumes Veritas Enterprise Administrator 	Currently not supported
Creating a volume group	<ol style="list-style-type: none"> SAM Areas Disks and File Systems Volume Groups Actions Create 	<ol style="list-style-type: none"> Tools Disks and File Systems Volume Groups Create VG 	#smh — f > v > c
Importing a volume group	<ol style="list-style-type: none"> SAM Areas Disks and File Systems Volume Groups Actions Import 	<ol style="list-style-type: none"> Tools Disks and File Systems Volume Groups Import VG 	#smh — f > v > i
Activating a volume group	<ol style="list-style-type: none"> SAM Areas Disks and File Systems Volume Groups Actions Activate 	<ol style="list-style-type: none"> Tools Disks and File Systems Volume Groups Select a volume group Activate VG 	#smh — f > v > Select a volume group > Enter > a
Opening Veritas Administrator	<ol style="list-style-type: none"> SAM Areas Disks and File Systems Volume Groups Actions Run Veritas Administrator 	<ol style="list-style-type: none"> Tools Disks and File Systems Volume Groups Veritas Enterprise Administrator 	Currently not supported
Viewing details of a volume group	<ol style="list-style-type: none"> SAM Areas Disks and File Systems Volume Groups Select a volume group Actions View More Information 	<ol style="list-style-type: none"> Tools Disks and File Systems Volume Groups Select a volume group 	#smh — f > v > Select a volume group > Enter
Extending a volume group	<ol style="list-style-type: none"> SAM Areas Disks and File Systems Volume Groups Select a volume group Actions Extend 	<ol style="list-style-type: none"> Tools Disks and File Systems Volume Groups Select a volume group Extend VG 	#smh — f > v > Select a volume group > Enter > e

Table 2-4 SAM-SMH Mapping – Disks and File Systems Configuration (continued)

Task	Using SAM	Using HP SMH GUI	Using HP SMH TUI
Exporting a volume group	<ol style="list-style-type: none"> 1. SAM Areas 2. Disks and File Systems 3. Volume Groups 4. Select a volume group 5. Actions 6. Export 	<ol style="list-style-type: none"> 1. Tools 2. Disks and File Systems 3. Volume Groups 4. Select a volume group 5. Export VG 	#smh — f > v > Select a volume group > Enter > g
Deactivating a volume group	<ol style="list-style-type: none"> 1. SAM Areas 2. Disks and File Systems 3. Volume Groups 4. Select a volume group 5. Actions 6. Deactivate 	<ol style="list-style-type: none"> 1. Tools 2. Disks and File Systems 3. Volume Groups 4. Select a volume group 5. Deactivate VG 	#smh — f > v > Select a volume group > Enter > d
Creating and modifying a physical volume group	<ol style="list-style-type: none"> 1. SAM Areas 2. Disks and File Systems 3. Volume Groups 4. Select a volume group 5. Actions 6. Create/Modify Physical Volume Groups 	<ol style="list-style-type: none"> 1. Tools 2. Disks and File Systems 3. Volume Groups 4. Select a volume group 5. Create/Modify PVGs 	#smh — f > v > Select a volume group > Enter > c
Removing a volume group	<ol style="list-style-type: none"> 1. SAM Areas 2. Disks and File Systems 3. Volume Groups 4. Select a volume group 5. Actions 6. Remove 	<ol style="list-style-type: none"> 1. Tools 2. Disks and File Systems 3. Volume Groups 4. Select a volume group 5. Remove VG 	#smh — f > v > Select a volume group > Enter > m
Converting a non-spare volume group to a spare volume group	<ol style="list-style-type: none"> 1. SAM Areas 2. Disks and File Systems 3. Volume Groups 4. Select a volume group 5. Actions 6. Hot Spare Administration 7. Convert Non-Spare to Spare 	Currently not supported	Currently not supported
Converting a spare volume group to a non-spare volume group	<ol style="list-style-type: none"> 1. SAM Areas 2. Disks and File Systems 3. Volume Groups 4. Select a volume group 5. Actions 6. Hot Spare Administration 7. Convert Spare to Non-Spare 	Currently not supported	Currently not supported

Table 2-4 SAM-SMH Mapping – Disks and File Systems Configuration *(continued)*

Task	Using SAM	Using HP SMH GUI	Using HP SMH TUI
Moving data from an active spare volume group to a disk	<ol style="list-style-type: none"> 1. SAM Areas 2. Disks and File Systems 3. Volume Groups 4. Select a volume group 5. Actions 6. Hot Spare Administration 7. Move Data From Active Spare to Target Disk 	Currently not supported	Currently not supported
Adding a device swap using the Logical Volume Manager	<ol style="list-style-type: none"> 1. SAM Areas 2. Disks and File Systems 3. Swap 4. Actions 5. Add Device Swap 6. Using the Logical Volume Manager 	<ol style="list-style-type: none"> 1. Tools 2. Disks and File Systems 3. Paging Space 4. Add Paging Space on Device 	Currently not supported
Adding a device swap without using the Logical Volume Manager	<ol style="list-style-type: none"> 1. SAM Areas 2. Disks and File Systems 3. Swap 4. Actions 5. Add Device Swap 6. Not Using the Logical Volume Manager 	<ol style="list-style-type: none"> 1. Tools 2. Disks and File Systems 3. Paging Space 4. Add Paging Space on Device 	Currently not supported
Adding a file system swap	<ol style="list-style-type: none"> 1. SAM Areas 2. Disks and File Systems 3. Swap 4. Actions 5. Add Device Swap 6. Add File System Swap 	<ol style="list-style-type: none"> 1. Tools 2. Disks and File Systems 3. Paging Space 4. Add Paging Space on File System 	Currently not supported
Opening Veritas enterprise administrator	<ol style="list-style-type: none"> 1. SAM Areas 2. Disks and File Systems 3. Swap 4. Actions 5. Add Device Swap 6. Run Veritas Enterprise Administrator 	<ol style="list-style-type: none"> 1. Tools 2. Disks and File Systems 3. Paging Space 4. Veritas Enterprise Administrator 	Currently not supported

Table 2-4 SAM-SMH Mapping – Disks and File Systems Configuration *(continued)*

Task	Using SAM	Using HP SMH GUI	Using HP SMH TUI
Viewing attribute details	<ol style="list-style-type: none"> 1. SAM Areas 2. Disks and File Systems 3. Swap 4. Select a device file 5. Actions 6. Zoom 	<ol style="list-style-type: none"> 1. Tools 2. Disks and File Systems 3. Paging Space 4. Select a device file 5. Add Paging Space on Device 	Currently not supported
Modifying a device swap	<ol style="list-style-type: none"> 1. SAM Areas 2. Disks and File Systems 3. Swap 4. Select a device file 5. Actions 6. Modify 	<ol style="list-style-type: none"> 1. Tools 2. Disks and File Systems 3. Paging Space 4. Select a device file 5. Modify Paging Space on Device 	Currently not supported
Removing a device swap	<ol style="list-style-type: none"> 1. SAM Areas 2. Disks and File Systems 3. Swap 4. Select a device file 5. Actions 6. Remove 	<ol style="list-style-type: none"> 1. Tools 2. Disks and File Systems 3. Paging Space 4. Select a device file 5. Remove Paging Space on Device 	Currently not supported

Kernel Configuration (kcweb)

Table 2-5 SAM-SMH Mapping – Kernel Configuration

Task	Using SAM	Using HP SMH GUI	Using HP SMH TUI
Viewing Tunable Details	<ol style="list-style-type: none"> 1. SAM Areas 2. Kernel Configuration (character mode) 3. t 4. Select a tunable 5. Enter 	<ol style="list-style-type: none"> 1. Tools 2. Kernel Configuration 3. Tunables 4. Select a tunable 	#smh k > t > Select a tunable > Enter
Modifying Tunable Value	<ol style="list-style-type: none"> 1. SAM Areas 2. Kernel Configuration (character mode) 3. t 4. Select a tunable 5. m 	<ol style="list-style-type: none"> 1. Tools 2. Kernel Configuration 3. Tunables 4. Select a tunable 5. Modify Tunable 	#smh k > t > Select a tunable > m
Viewing Module Details	<ol style="list-style-type: none"> 1. SAM Areas 2. Kernel Configuration (character mode) 3. m 4. Select a module 5. Enter 	<ol style="list-style-type: none"> 1. Tools 2. Kernel Configuration 3. Modules 4. Select a module 	#smh k > m > Select a module > Enter
Modifying Module State	<ol style="list-style-type: none"> 1. SAM Areas 2. Kernel Configuration (character mode) 3. m 4. Select a module 5. m 	<ol style="list-style-type: none"> 1. Tools 2. Kernel Configuration 3. Modules 4. Select a module 5. Modify Module 	#smh k > m > Select a module > m
Viewing Pending Changes and Rebooting	<ol style="list-style-type: none"> 1. SAM Areas 2. Kernel Configuration (character mode) 3. m 4. p 	<ol style="list-style-type: none"> 1. Tools 2. Kernel Configuration 3. Tunables Modules Alarms 4. View Pending Changes and Reboot 	#smh k > m > r
Viewing Alarm Details	<ol style="list-style-type: none"> 1. SAM Areas 2. Kernel Configuration (character mode) 3. a 4. Select an alarm 5. Enter 	<ol style="list-style-type: none"> 1. Tools 2. Kernel Configuration 3. Alarms 4. Select an alarm 	#smh k > a > Select an alarm > Enter
Adding an Alarm	<ol style="list-style-type: none"> 1. SAM Areas 2. Kernel Configuration (character mode) 3. a 4. c 	<ol style="list-style-type: none"> 1. Tools 2. Kernel Configuration 3. Alarms 4. Add Alarm 	#smh k > a > c
Modifying an Alarm	<ol style="list-style-type: none"> 1. SAM Areas 2. Kernel Configuration (character mode) 3. a 4. Select an alarm 5. m 	<ol style="list-style-type: none"> 1. Tools 2. Kernel Configuration 3. Alarms 4. Select an alarm 5. Modify Alarm 	#smh k > a > Select an alarm > m

Table 2-5 SAM-SMH Mapping – Kernel Configuration *(continued)*

Task	Using SAM	Using HP SMH GUI	Using HP SMH TUI
Deleting an Alarm	<ol style="list-style-type: none"> SAM Areas Kernel Configuration (character mode) a Select an alarm r 	<ol style="list-style-type: none"> Tools Kernel Configuration Alarms Select an alarm Remove 	#smh — k > a > Select an alarm > r
Activating an Alarm	<ol style="list-style-type: none"> SAM Areas Kernel Configuration (character mode) a Select an alarm a 	<ol style="list-style-type: none"> Tools Kernel Configuration Alarms Select an alarm Activate 	#smh — k > a > Select an alarm > a
Deactivating an alarm	<ol style="list-style-type: none"> SAM Areas Kernel Configuration (character mode) a Select an alarm d 	<ol style="list-style-type: none"> Tools Kernel Configuration Alarms Select an alarm Deactivate 	#smh — k > a > Select an alarm > d
Viewing Change Log	<ol style="list-style-type: none"> SAM Areas Kernel Configuration (character mode) l 	<ol style="list-style-type: none"> Tools Kernel Configuration Tunables Modules Alarms View Change Log 	#smh — k > l
Setting usage monitoring	<ol style="list-style-type: none"> SAM Areas Kernel Configuration (character mode) u s 	<ol style="list-style-type: none"> Tools Kernel Configuration Tunables Modules Alarms Stop Usage Monitoring or Start Usage Monitoring 	#smh — k > u > s

Networking and Communications (ncweb)

Network Interfaces Configuration

Table 2-6 SAM-SMH Mapping – Network Interfaces Configuration

Task	Using SAM	Using HP SMH GUI	Using HP SMH TUI
Adding an IP Logical Interface	<ol style="list-style-type: none"> SAM Areas Networking and Communications Network Interface Cards Actions Add IP Logical Interface 	<ol style="list-style-type: none"> Tools Network Interfaces Configuration Network Interface Cards Select an interface Add IP Logical (Secondary) Interface 	#smh n > i > n > Select interface > Enter > 1
Modifying IP attributes	<ol style="list-style-type: none"> SAM Areas Networking and Communications Network Interface Cards Actions Modify 	<ol style="list-style-type: none"> Tools Network Interfaces Configuration Network Interface Cards Select an interface View/Modify IP Attributes 	#smh n > i > n > Select interface > Enter > p
Deleting an IP Interface	<ol style="list-style-type: none"> SAM Areas Networking and Communications Network Interface Cards Actions Delete 	<ol style="list-style-type: none"> Tools Network Interfaces Configuration Network Interface Cards Select an interface Delete IP Interface 	#smh n > i > n > Select interface > Enter > D
Disabling an IP Interface	<ol style="list-style-type: none"> SAM Areas Networking and Communications Network Interface Cards Actions Disable 	<ol style="list-style-type: none"> Tools Network Interfaces Configuration Network Interface Cards Select an interface View/Modify IP Attributes 	#smh n > i > n > Select interface > Enter > p
Unconfiguring an IP Interface	<ol style="list-style-type: none"> SAM Areas Networking and Communications Network Interface Cards Actions Unconfigure 	See <i>Deleting an IP Interface</i>	See <i>Deleting an IP Interface</i>
Modifying the system name	<ol style="list-style-type: none"> SAM Areas Networking and Communications Network Interface Cards Actions Modify System Name 	Currently not available	Currently not available

Table 2-6 SAM-SMH Mapping – Network Interfaces Configuration *(continued)*

Task	Using SAM	Using HP SMH GUI	Using HP SMH TUI
Adding a VLAN	<ol style="list-style-type: none"> 1. SAM Areas 2. Networking and Communications 3. Virtual LAN 4. Actions 5. Create VLAN 	<ol style="list-style-type: none"> 1. Tools 2. Network Interfaces Configuration 3. Virtual LANs 4. Add VLAN 	#smh — n > i > v > c —
Viewing a VLAN	<ol style="list-style-type: none"> 1. SAM Areas 2. Networking and Communications 3. Virtual LAN 4. Actions 5. Modify VLAN Properties 	<ol style="list-style-type: none"> 1. Tools 2. Network Interfaces Configuration 3. Virtual LANs 4. Select an interface 5. View/Modify VLAN 	#smh — n > i > v > Select interface > Enter > c
Modifying a VLAN	<ol style="list-style-type: none"> 1. SAM Areas 2. Networking and Communications 3. Virtual LAN 4. Actions 5. Modify VLAN Properties 	<ol style="list-style-type: none"> 1. Tools 2. Network Interfaces Configuration 3. Virtual LANs 4. Select an interface 5. View/Modify VLAN 	#smh — n > i > v > Select interface > Enter > c
Deleting a VLAN	<ol style="list-style-type: none"> 1. SAM Areas 2. Networking and Communications 3. Virtual LAN 4. Actions 5. Delete VLAN 	<ol style="list-style-type: none"> 1. Tools 2. Network Interfaces Configuration 3. Virtual LANs 4. Select an interface 5. Delete VLAN 	#smh — n > i > v > Select interface > Enter > d
Configuring IP Address (for VLAN)	<ol style="list-style-type: none"> 1. SAM Areas 2. Networking and Communications 3. Virtual LAN 4. Actions 5. Configure IP Address 	<ol style="list-style-type: none"> 1. Tools 2. Network Interfaces Configuration 3. Virtual LANs 4. Select an interface 5. View/Modify IP Attributes 	#smh — n > i > v > Select interface > Enter > p

Network Services Configuration

Table 2-7 SAM-SMH Mapping – Network Services Configuration

Task	Using SAM	Using HP SMH GUI	Using HP SMH TUI
Viewing details of a shared file system	<ol style="list-style-type: none"> 1. SAM Areas 2. Networking and Communications 3. Networked File Systems 4. Mounted Remote File Systems 5. Actions 6. View More Information 	<ol style="list-style-type: none"> 1. Tools 2. Network Services Configuration 3. Networked File Systems 4. Share/Unshare File Systems 5. Select an interface 	#smh n > s > f > s > Select file system > Enter
Sharing a file system	<ol style="list-style-type: none"> 1. SAM Areas 2. Networking and Communications 3. Networked File Systems 4. Mounted Remote File Systems 5. Actions 6. Add Remote File System 	<ol style="list-style-type: none"> 1. Tools 2. Network Services Configuration 3. Networked File Systems 4. Share/Unshare File Systems 5. Select an interface 6. Share (Export) a File System 	#smh n > s > f > s > s
Modifying a shared file system	<ol style="list-style-type: none"> 1. SAM Areas 2. Networking and Communications 3. Networked File Systems 4. Mounted Remote File Systems 5. Actions 6. Modify 	<ol style="list-style-type: none"> 1. Tools 2. Network Services Configuration 3. Networked File Systems 4. Share/Unshare File Systems 5. Select an interface 6. View/Modify Shared (exported) File System 	#smh n > s > f > s > Select file system > Enter > m
Unsharing a file system	<ol style="list-style-type: none"> 1. SAM Areas 2. Networking and Communications 3. Networked File Systems 4. Mounted Remote File Systems 5. Actions 6. Remove 	<ol style="list-style-type: none"> 1. Tools 2. Network Services Configuration 3. Networked File Systems 4. Share/Unshare File Systems 5. Select an interface 6. Unshare (exported) a File System 	#smh n > s > f > s > Select file system > u
Enabling the NFS server	<ol style="list-style-type: none"> 1. SAM Areas 2. Networking and Communications 3. Networked File Systems 4. Exported File Systems Systems 5. Actions 6. Enable NFS Server 	<ol style="list-style-type: none"> 1. Tools 2. Network Services Configuration 3. Networked File Systems 4. Share/Unshare File Systems 5. Enable NFS Server 	#smh n > s > f > s > b

Table 2-7 SAM-SMH Mapping – Network Services Configuration *(continued)*

Task	Using SAM	Using HP SMH GUI	Using HP SMH TUI
Disabling the NFS Server	<ol style="list-style-type: none"> 1. SAM Areas 2. Networking and Communications 3. Networked File Systems 4. Exported File Systems 5. Actions 6. Disable NFS Server 	<ol style="list-style-type: none"> 1. Tools 2. Network Services Configuration 3. Networked File Systems 4. Share/Unshare File Systems 5. Select an interface 6. Disable NFS Server 	<pre>#smh n > s > f > s > d</pre>

Peripheral Devices (pdweb)

Table 2-8 SAM-SMH Mapping – Peripheral Devices

Task	Using SAM	Using HP SMH GUI	Using HP SMH TUI
Running the Critical Resource Analysis (CRA)	<ol style="list-style-type: none"> SAM Areas Peripheral Devices Cards Select a card Actions Analyze Critical Resources 	<ol style="list-style-type: none"> Tools Peripheral Devices Manage Peripheral Devices OLRAD Cards Select a slot Run Critical Resource Analysis 	#smh d > o > Select a slot > Enter > c
Adding card online	<ol style="list-style-type: none"> SAM Areas Peripheral Devices Cards Actions Add 	<ol style="list-style-type: none"> Tools Peripheral Devices Manage Peripheral Devices OLRAD Cards Select an unoccupied slot Add Card Online 	#smh d > o > Select an occupied slot > Enter > a
Replacing card online	<ol style="list-style-type: none"> SAM Areas Peripheral Devices Cards Select a card Actions Replace 	<ol style="list-style-type: none"> Tools Peripheral Devices Manage Peripheral Devices OLRAD Cards Select a slot Replace Card Online 	#smh d > o > Select a slot > Enter > r
Deleting card online	<ol style="list-style-type: none"> SAM Areas Peripheral Devices Cards Select a card Actions Remove (offline) 	<ol style="list-style-type: none"> Tools Peripheral Devices Manage Peripheral Devices OLRAD Cards Select a slot Delete Card Online 	#smh d > o > Select a slot > Enter > d
Turning the slot LED on/off	<ol style="list-style-type: none"> SAM Areas Peripheral Devices Cards Actions Light I/O Slot LED 	<ol style="list-style-type: none"> Tools Peripheral Devices Manage Peripheral Devices OLRAD Cards Turn On/Off Slot LED 	#smh d > o > Select a slot > Enter > 1
Running hardware scan	<ol style="list-style-type: none"> SAM Areas Peripheral Devices Cards Options Refresh List 	<ol style="list-style-type: none"> Tools Peripheral Devices Manage Peripheral Devices I/O Tree Refresh 	#smh d > i > r

Printers and Plotters (Ipweb)

Table 2-9 SAM-SMH Mapping – Printers and Plotters

Task	Using SAM	Using HP SMH GUI	Using HP SMH TUI
Adding a serial RS-232 printer	<ol style="list-style-type: none"> 1. SAM Areas 2. Peripheral Devices 3. Printers and Plotters 4. LP Spooler 5. Printers and Plotters 6. Actions 7. Add Local Printer/Plotter 8. Add Serial (RS-232) Printer/Plotter 	<ol style="list-style-type: none"> 1. Tools 2. Printer Management (web-based) 3. Configure Printers/Plotters 4. Add RS-232 printer/plotter 	#smh 1 > a > Select Add RS-232 printer/plotter > Enter > Select H/W Path > Enter
Adding a printer with non-standard device file	<ol style="list-style-type: none"> 1. SAM Areas 2. Peripheral Devices 3. Printers and Plotters 4. LP Spooler 5. Printers and Plotters 6. Actions 7. Add Local Printer/Plotter 8. Add Printer with Non-standard Device File 	<ol style="list-style-type: none"> 1. Tools 2. Printer Management (web-based) 3. Configure Printers/Plotters 4. Add Printer with Non-standard Device File 	#smh 1 > a > Select Add Printer with Non-standard Device File > Enter
Adding a remote printer	<ol style="list-style-type: none"> 1. SAM Areas 2. Peripheral Devices 3. Printers and Plotters 4. LP Spooler 5. Printers and Plotters 6. Actions 7. Add Remote Printer/Plotter 	<ol style="list-style-type: none"> 1. Tools 2. Printer Management (web-based) 3. Configure Printers/Plotters 4. Add Remote Printer/Plotter 	Currently not supported —
Adding a network printer	<ol style="list-style-type: none"> 1. SAM Areas 2. Peripheral Devices 3. Printers and Plotters 4. LP Spooler 5. Printers and Plotters 6. Actions 7. Add Network-Based Printer/Plotter 	<ol style="list-style-type: none"> 1. Tools 2. Printer Management (web-based) 3. Configure Printers/Plotters 4. Add Network-Based Printer/Plotter 	#smh 1 > a > Select Add Network-Based Printer/Plotter > Enter
Adding a printer to a TSM terminal	<ol style="list-style-type: none"> 1. SAM Areas 2. Peripheral Devices 3. Printers and Plotters 4. LP Spooler 5. Printers and Plotters 6. Actions 7. Add Local Printer/Plotter 8. Add Printer/Plotter to a TSM Terminal 	<ol style="list-style-type: none"> 1. Tools 2. Printer Management (web-based) 3. Configure Printers/Plotters 4. Add printer/plotter to a TSM Terminal 	Currently not supported —

Table 2-9 SAM-SMH Mapping – Printers and Plotters (continued)

Task	Using SAM	Using HP SMH GUI	Using HP SMH TUI
Viewing printer details	<ol style="list-style-type: none"> 1. SAM Areas 2. Peripheral Devices 3. Printers and Plotters 4. LP Spooler 5. Printers and Plotters 6. Select printer 7. Actions 8. View More Information 	<ol style="list-style-type: none"> 1. Tools 2. Printer Management (web-based) 3. Configure Printers/Plotters 4. Select printer 	#smh — 1 > p > Select printer > Enter
Viewing print requests	<ol style="list-style-type: none"> 1. SAM Areas 2. Peripheral Devices 3. Printers and Plotters 4. LP Spooler 5. Print Requests 	<ol style="list-style-type: none"> 1. Tools 2. Printer Management (web-based) 3. Print Requests 4. Display Print Requests 	#smh — 1 > r > Select request > spacebar
Accepting print requests	<ol style="list-style-type: none"> 1. SAM Areas 2. Peripheral Devices 3. Printers and Plotters 4. LP Spooler 5. Printers and Plotters 6. Select printer 7. Actions 8. Accept Requests 	<ol style="list-style-type: none"> 1. Tools 2. Printer Management (web-based) 3. Configure Printers/Plotters 4. Select printer 5. Accept Requests 	#smh — 1 > p > Select printer > Enter > a
Rejecting print requests	<ol style="list-style-type: none"> 1. SAM Areas 2. Peripheral Devices 3. Printers and Plotters 4. LP Spooler 5. Printers and Plotters 6. Select printer 7. Actions 8. Reject Requests 	<ol style="list-style-type: none"> 1. Tools 2. Printer Management (web-based) 3. Configure Printers/Plotters 4. Select printer 5. Reject Requests 	#smh — 1 > p > Select printer > Enter > r
Removing a printer	<ol style="list-style-type: none"> 1. SAM Areas 2. Peripheral Devices 3. Printers and Plotters 4. LP Spooler 5. Printers and Plotters 6. Select printer 7. Actions 8. Remove Printer 	<ol style="list-style-type: none"> 1. Tools 2. Printer Management (web-based) 3. Configure Printers/Plotters 4. Select printer 5. Remove Printers 	#smh — 1 > p > Select printer > Enter > z
Enabling a printer	<ol style="list-style-type: none"> 1. SAM Areas 2. Peripheral Devices 3. Printers and Plotters 4. LP Spooler 5. Printers and Plotters 6. Select printer 7. Actions 8. Enable Printer 	<ol style="list-style-type: none"> 1. Tools 2. Printer Management (web-based) 3. Configure Printers/Plotters 4. Select printer 5. Enable Printer 	#smh — 1 > p > Select printer > Enter > e

Table 2-9 SAM-SMH Mapping – Printers and Plotters (continued)

Task	Using SAM	Using HP SMH GUI	Using HP SMH TUI
Disabling a printer	<ol style="list-style-type: none"> 1. SAM Areas 2. Peripheral Devices 3. Printers and Plotters 4. LP Spooler 5. Printers and Plotters 6. Select printer 7. Actions 8. Disable Printer 	<ol style="list-style-type: none"> 1. Tools 2. Printer Management (web-based) 3. Configure Printers/Plotters 4. Select printer 5. Disable Printer 	#smh — 1 > p > Select printer > Enter > d
Modifying fence priority	<ol style="list-style-type: none"> 1. SAM Areas 2. Peripheral Devices 3. Printers and Plotters 4. LP Spooler 5. Printers and Plotters 6. Select printer 7. Actions 8. Modify Fence Priority 	<ol style="list-style-type: none"> 1. Tools 2. Printer Management (web-based) 3. Configure Printers/Plotters 4. Select printer 5. Modify Fence Priority 	#smh — 1 > p > Select printer > Enter > m
Setting the system default destination	<ol style="list-style-type: none"> 1. SAM Areas 2. Peripheral Devices 3. Printers and Plotters 4. LP Spooler 5. Printers and Plotters 6. Select printer 7. Actions 8. Set as System Default Destination 	<ol style="list-style-type: none"> 1. Tools 2. Printer Management (web-based) 3. Configure Printers/Plotters 4. Select printer 5. Set as System Default Destination 	#smh — 1 > p > Select printer > k
Viewing list of common problems	<ol style="list-style-type: none"> 1. SAM Areas 2. Peripheral Devices 3. Printers and Plotters 4. LP Spooler 5. Printers and Plotters 6. Actions 7. Show Common Problems 	<ol style="list-style-type: none"> 1. Tools 2. Printer Management (web-based) 3. Configure Printers/Plotters 4. Show Common Problems 	#smh — 1 > c
Moving a print request	<ol style="list-style-type: none"> 1. SAM Areas 2. Peripheral Devices 3. Printers and Plotters 4. LP Spooler 5. Print Requests 6. Select print request 7. Actions 8. Move Request 	<ol style="list-style-type: none"> 1. Tools 2. Printer Management (web-based) 3. Manage Print Requests 4. Select print requests 5. Move Requests 	#smh — 1 > r > Select request > m
Cancelling a print request	<ol style="list-style-type: none"> 1. SAM Areas 2. Peripheral Devices 3. Printers and Plotters 4. LP Spooler 5. Print Requests 6. Select print request 7. Actions 8. Cancel Request 	<ol style="list-style-type: none"> 1. Tools 2. Printer Management (web-based) 3. Manage Print Requests 4. Select print requests 5. Cancel Requests 	#smh — 1 > r > Select request > c

Table 2-9 SAM-SMH Mapping – Printers and Plotters *(continued)*

Task	Using SAM	Using HP SMH GUI	Using HP SMH TUI
Starting the print spooler	<ol style="list-style-type: none"> 1. SAM Areas 2. Peripheral Devices 3. Printers and Plotters 4. LP Spooler 5. Printers and Plotters 6. Actions 7. Start Print Spooler 	<ol style="list-style-type: none"> 1. Tools 2. Printer Management (web-based) 3. Save/Restore Spooler Configuration 4. Start Print Spooler 	#smh — 1 > s > s
Saving the spooler configuration	<ol style="list-style-type: none"> 1. SAM Areas 2. Peripheral Devices 3. Printers and Plotters 4. LP Spooler 5. Save/Restore Spooler Configuration 6. Actions 7. Save Spooler Configuration 	<ol style="list-style-type: none"> 1. Tools 2. Printer Management (web-based) 3. Save/Restore Spooler Configuration 4. Save Spooler Configuration 	#smh — 1 > s > s
Restoring the spooler configuration	<ol style="list-style-type: none"> 1. SAM Areas 2. Peripheral Devices 3. Printers and Plotters 4. LP Spooler 5. Save/Restore Spooler Configuration 6. Actions 7. Restore Spooler Configuration 	<ol style="list-style-type: none"> 1. Tools 2. Printer Management (web-based) 3. Save/Restore Spooler Configuration 4. Restore Spooler Configuration 	#smh — 1 > s > R
Stopping the print spooler	<ol style="list-style-type: none"> 1. SAM Areas 2. Peripheral Devices 3. Printers and Plotters 4. LP Spooler 5. Printers and Plotters 6. Actions 7. Stop Print Spooler 	<ol style="list-style-type: none"> 1. Tools 2. Printer Management (web-based) 3. Save/Restore Spooler Configuration 4. Stop Print Spooler 	#smh — 1 > s > t

Free Manuals Download Website

<http://myh66.com>

<http://usermanuals.us>

<http://www.somanuals.com>

<http://www.4manuals.cc>

<http://www.manual-lib.com>

<http://www.404manual.com>

<http://www.luxmanual.com>

<http://aubethermostatmanual.com>

Golf course search by state

<http://golfingnear.com>

Email search by domain

<http://emailbydomain.com>

Auto manuals search

<http://auto.somanuals.com>

TV manuals search

<http://tv.somanuals.com>