



hp pavilion

v52
monitor guide

© 2003 Hewlett-Packard Company. All rights reserved.

Hewlett-Packard is a registered trademark of Hewlett-Packard Company in the United States of America and other countries/regions.

Other brand or product names are trademarks of their respective holders.

The information in this document is subject to change without notice.

Hewlett-Packard Company makes no warranty of any kind with regard to this material, including, but not limited to, the implied warranties of merchantability and fitness for a particular purpose.

HP shall not be liable for errors contained herein or for incidental or consequential damages in connection with the furnishing, performance, or use of this material.

HP assumes no responsibility for the use or reliability of its software on equipment that is not furnished by HP.

This document contains proprietary information that is protected by copyright. All rights are reserved. No part of this document may be photocopied, reproduced, or translated to another language without the prior written consent of HP.

Hewlett-Packard Company
P.O. Box 4010
Cupertino, CA 95015-4010
USA



WARNING: Text set off in this manner indicates that failure to follow directions could result in bodily harm or loss of life.



CAUTION: Text set off in this manner indicates that failure to follow directions could result in damage to equipment or loss of information.



Text set off in this manner indicates important information the user should make note of.

Contents

Introduction

Kit Contents	1-1
--------------------	-----

Safety and Maintenance Guidelines

Safety Guidelines	2-1
Power Requirements	2-1
Important Safety Information.....	2-1
Maintenance Guidelines	2-1
Removing the Monitor Base	2-3

Installation

Monitor Base Installation	3-1
Monitor Installation	3-2
Speaker Installation.....	3-3

Operation

Information Files.....	4-1
Installing Drivers	4-1
Front Panel Controls.....	4-3
On-Screen Display	4-4
On-Screen Display Functions.....	4-5
Monitor Messages.....	4-6
No Signal Message.....	4-6
Out of Frequency Range Message	4-7
Using the Energy Saver Mode	4-8

Troubleshooting

Solving Common Problems	A-1
Preparing to Call Technical Support.....	A-3

Technical Specifications

HP Pavilion v52/15" Monitor.....	B-1
----------------------------------	-----

Agency Regulatory Notices

Federal Communications Commission Notice C-1
 Modifications C-1
 Cables C-1
Declaration of Conformity for Products
Marked with FCC Logo, United States Only C-2
Canadian Notice C-2
 Avis Canadien C-2
European Union Notice C-2
EPA Energy Star Compliance C-3
Power Cord Set Requirements C-3

Introduction

Your microprocessor-based, digitally controlled color monitor is a high-performance and easy-to-use product. It employs the latest on-screen menu technology.

Kit Contents

Your monitor kit should contain:

- CRT monitor
- Monitor Base (pre-attached on selected models)
- AC power cord
- Speakers
- Speaker power adapter
- Documentation kit

Safety and Maintenance Guidelines

Safety Guidelines

Power Requirements

Refer to the “Power Cord Set Requirements” section in “Agency Regulatory Notices,” for information on the correct power cord set for this device.

Important Safety Information



WARNING: To reduce the risk of electric shock or damage to your equipment, do not disable the power cord grounding feature. This equipment is designed to be connected to a grounded (earthed) power outlet that is easily accessible to the operator. The grounding plug is an important safety feature.



WARNING: For your safety, be sure that the power outlet you plug the power cord into is easily accessible and located as close to the equipment as possible. When you need to disconnect the power to the equipment, unplug the power cord from the power outlet by grasping the plug firmly. Never pull on the cord.



CAUTION: For the protection of your monitor, as well as your computer, connect all power cords for your computer and its peripheral devices (such as a monitor, printer, scanner) to some form of surge protection device such as a power strip or Uninterruptible Power Supply (UPS). Not all power strips provide surge protection; the power strips must be specifically labeled as having this ability. Use a power strip whose manufacturer offers a Damage Replacement Policy so you can replace your equipment if surge protection fails.

Maintenance Guidelines

To enhance the performance and extend the life of your monitor, follow these guidelines:

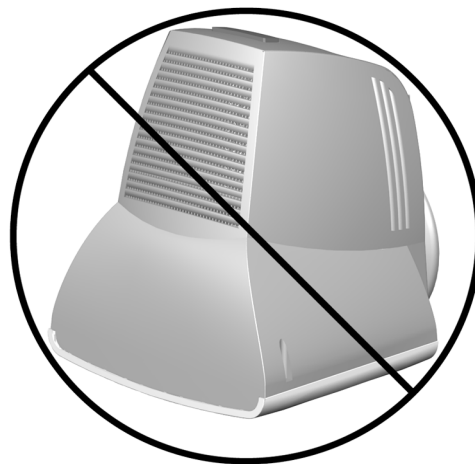
- Do not open your monitor cabinet or attempt to service this product yourself. If your monitor is not operating properly, or has been dropped or damaged, first unplug from power outlet, and then contact your authorized dealer, reseller, or service provider.
- Adjust only those controls that are discussed in the operating instructions.
- Place your monitor at least 3 inches (76 mm) away from walls or other enclosures.
- Use only a power source and connection appropriate for this monitor, as indicated on the label/back plate of the monitor.

- Be sure the total ampere rating of the products connected to the outlet does not exceed the current rating of the electrical outlet, and the total ampere rating of the products connected to the cord does not exceed the rating of the cord. Look on the power label to determine the ampere rating (AMPS or A) for each device.
- Install your monitor near an outlet that you can easily reach. Disconnect the monitor by grasping the plug firmly and pulling it from the outlet. Never disconnect the monitor by pulling the cord.
- Turn your monitor off when not in use. You can substantially increase the life of your monitor by using a screen saver program and turning off the monitor when not in use.
- Unplug your monitor from the wall outlet before cleaning. Do not use liquid cleaners or aerosol cleaners. Use a damp cloth for cleaning. If the screen requires additional cleaning, use an antistatic CRT screen cleaner.



CAUTION: Do not use benzene, thinner, ammonia, or any other volatile substances to clean your monitor or the screen. These chemicals may damage the cabinet finish as well as the screen.

- Slots and openings in the cabinet are provided for ventilation. These openings must not be blocked or covered. Never push objects of any kind into cabinet slots or other openings.
- Do not place plants on top of your monitor. Water or dirt from the plant may get into the vents.
- Do not drop your monitor or place it on an unstable surface.
- Do not allow anything to rest on the power cord. Do not walk on the cord.
- Keep your monitor in a well-ventilated area, away from excessive light, heat, or moisture. Keep your monitor away from high-capacity transformers, electric motors, and other devices with strong magnetic fields.
- In a two-monitor system, place your monitors as far apart from one another as possible to lessen interference between them.
- Do not place the monitor face down. Damage could result to the front panel controls or the monitor screen.



Removing the Monitor Base

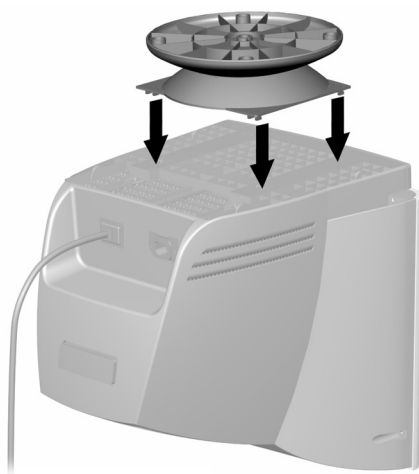
In the event that you need to disassemble the base from the monitor, follow these instructions:

1. If you must remove the base attachment, release the catch and slide the base toward the back of your monitor.
2. Lift the base up and away from your monitor.

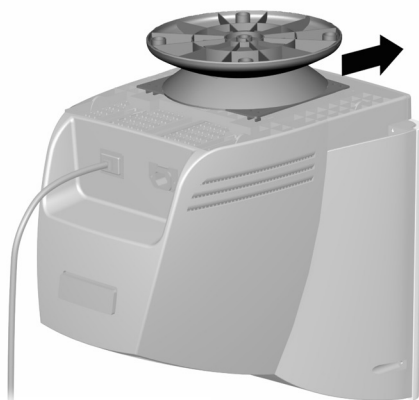
Monitor Base Installation

On some monitors, the base must be attached prior to monitor installation. If you need to attach the base, follow these steps:

1. Align the hooks on the base with the sockets on the bottom of the monitor, and attach the base.



2. Push the base toward the front of the monitor until it stops.



Monitor Installation

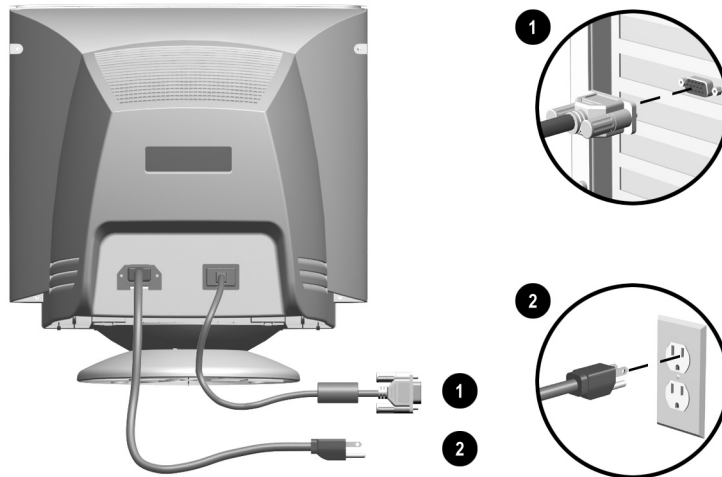
Before installing your monitor, place it in a convenient, well-ventilated location near your computer.

1. Turn off the power to your computer and other peripheral devices.
2. Connect the video cable (blue connector) ❶ from the back of the monitor to the blue 15-pin connector on the back of the computer. Tighten the cable screws to secure the cable to the connector.



CAUTION: To avoid damaging the video cable, ensure that the cable aligns with the 15-pin connector. Do not force the cable onto the connector.

3. Connect the power cord ❷ to the back of the monitor, and then connect the power cord to a power outlet.



4. Power on your computer and monitor.



If your monitor fails to function properly, refer to “Troubleshooting.”

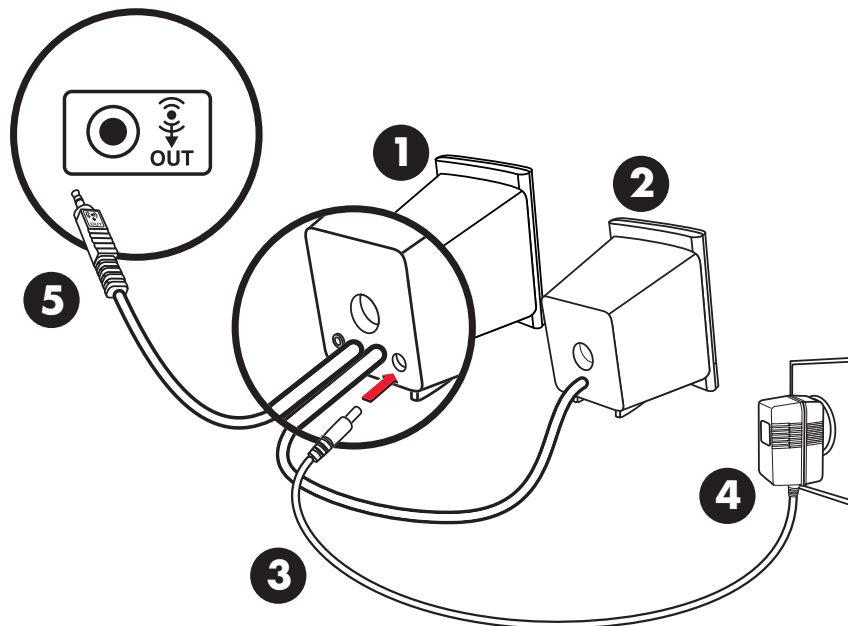
5. If necessary, adjust the front panel monitor controls according to your personal preference. See “Front Panel Controls” for detailed information.

Your monitor installation is now complete.

Speaker Installation

Selected monitors come with speakers that must be installed. If you need to install your speakers, follow these steps:

1. Place the control speaker **1** and the other speaker **2** on either side of your monitor.
2. Attach the speaker power cable **3** to the black connector on the back of the control speaker **1**, and then connect the AC adapter **4** into an electrical wall outlet.
3. Attach the green connector **5** from the control speaker **1** to the green port on the back of your computer.
4. Turn on the PC, turn on the monitor, and then turn the control speaker power knob clockwise to turn on the speakers.



Information Files

The CD-ROM included with this monitor contains two data files that must be installed onto your computer: An .INF file and an .ICM file.

The .INF file designates software and defines monitor resources used by Microsoft Windows to ensure monitor compatibility with the graphics adapter in your computer.

The .ICM file provides color matching consistency between your monitor screen and your printer. Once installed, this file is activated by graphics programs that have this color-matching feature.

To install these files on your computer:

1. Insert the CD-ROM disc that came with the monitor in your computer's optical drive.
2. Perform the steps to install the drivers. See "Installing Drivers," and choose the steps for your operating system.
3. To get the latest .INF and .ICM files, download them from the HP Web site. Access <http://www.hp.com> and follow the links to the Support page for monitors to download the appropriate files.

Installing Drivers

The HP monitor comes with driver software allowing you to take advantage of the Plug and Play feature of the Windows Me, Windows 2000, or Windows XP operating system. This software enables the computer to communicate with the monitor and use all the monitor features.



HP computers may come with the Plug and Play drivers preinstalled. If you have an older computer, these drivers may not be preinstalled and you may need to install the drivers from the CD-ROM disc that came with the monitor.

If the installation procedure for the operating system is different, or if you need more detailed installation information, please refer to the Microsoft Windows information that came with the computer.

Windows 2000 users



The procedure for installing the driver for your operating system may vary.

To install the driver for the v52 monitor:

1. Click **Start**, select **Settings**, and then click **Control Panel**.
2. Double-click **Display**.

3. Click the **Settings** tab.
4. Click **Advanced Properties** or **Advanced**, and select the **Monitor** tab.
5. Click **Properties**.
6. Click the **Driver** tab.
7. Click **Update Driver** and click **Next**.
8. Select the recommended option, and then click **Next**.
9. Select the **Specify a Location** box.
10. Find and open the **hp_v52.inf** file on the CD-ROM disc in the Drivers directory, and click **OK**.
11. Click **Next** to install the monitor driver.

Windows Me users



The procedure for installing the driver for your operating system may vary.

To install the driver for the v52 monitor:

1. Click **Start**, select **Settings**, and then click **Control Panel**.
2. Double-click **Display**.
3. Click the **Settings** tab.
4. Click the **Advanced** button.
5. Select the **Monitor** tab.
6. Click the **Change** button.
7. Select the **Specify a Location** box.
8. Find and open the **hp_v52.inf** file on the CD-ROM disc in the Drivers directory, and click **OK**.
9. Click **Next** to install the monitor driver.

Windows XP users



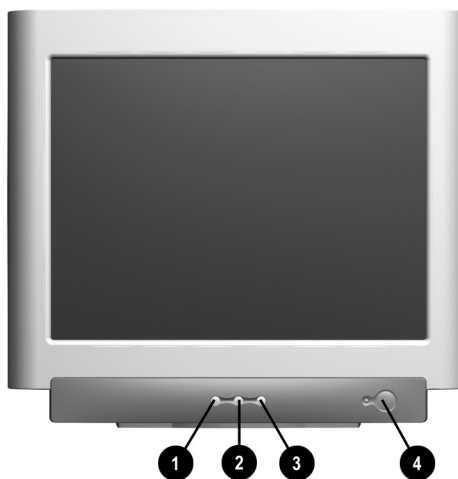
The procedure for installing the driver for your operating system may vary.

To install the driver for the v52 monitor:

1. Click **Start**.
2. Click **Control Panel**.
3. Click **Appearance and Themes**.
4. Click **Display**.
5. Select the **Settings** tab.
6. Click the **Advanced** button.

7. Select the **Monitor** tab.
8. Click **Properties**.
9. Select the **Driver** tab.
10. Click **Update Driver** and click **Next**.
11. Select the recommended option, and then click **Next**.
12. Select the **Specify a Location** box.
13. Find and open the **hp_v52.inf** file on the CD-ROM disc in the Drivers directory, and click **OK**.
14. Click **Next** to install the monitor driver.

Front Panel Controls



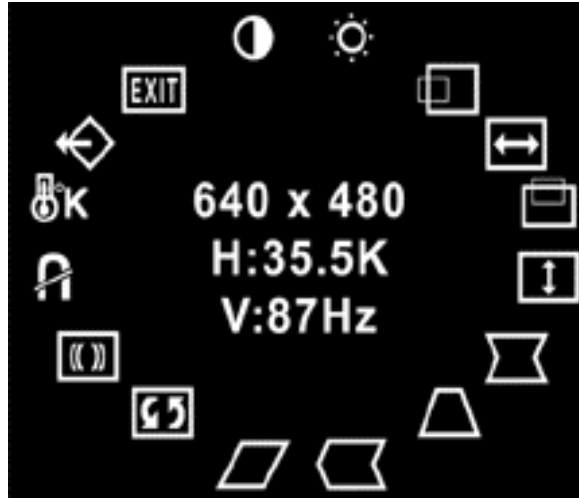
Front Panel Controls

Item	Icon	Name	Function
①		Select	Launches on-screen displays, selects functions and adjustments, and exits menus and On-Screen Display.
②		Left Adjustment	Moves backward through menu options or decreases adjustment levels.
③		Right Adjustment	Moves forward through menu options or increases adjustment levels.
④		Power/LED	Controls power to the monitor. The LED on the power button indicates the state of the monitor.

On-Screen Display

The On-Screen Display (OSD) adjusts the screen image based on your viewing preferences. To access the OSD, do the following:

1. If the monitor is not already on, press the Power button to turn on the monitor.
2. Press the Select button to display the On-Screen Display menu. A screen similar to this one appears. For a description of the icons that appear on the screen, see “On-Screen Display Functions” later in this chapter.



Not all OSD features are available on all models. The OSD for your monitor may be different. See “On-Screen Display Functions” for a features list for your model.

3. To move to a function, press the Right-Adjustment or Left-Adjustment button on the front panel of your monitor until the function is highlighted.
4. Press the Select button on the monitor to choose the function.
5. The adjustment window is displayed. Press the Right-Adjustment or Left-Adjustment buttons to increase (Right) or decrease (Left) the level of adjustment.
6. Press Select to save the new adjustment.
7. To exit the On-Screen Display, select the Exit icon and press the Select button once.

On-Screen Display Functions

Use the Right-Adjustment and Left-Adjustment buttons found on the front control panel of your monitor to adjust these functions.







The shaded area indicates that this function is available in the model indicated.

On-Screen Display Icons and Functions

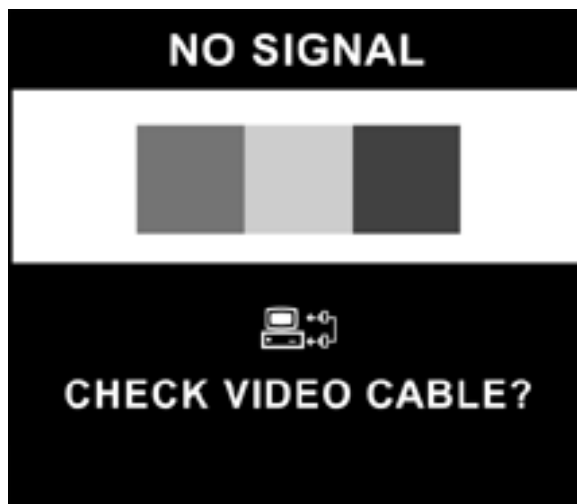
Icon	Function	Description	v52
	Contrast	Right-Adjustment increases the contrast, and Left-Adjustment decreases the contrast.	
	Brightness	Right-Adjustment increases the brightness, and Left-Adjustment decreases the brightness.	
	Horizontal Position	Right-Adjustment moves the image to the right, and Left-Adjustment moves the image to the left.	
	Horizontal Size	Right-Adjustment increases the horizontal size, and Left-Adjustment decreases the horizontal size.	
	Vertical Position	Right-Adjustment moves the image up, and Left-Adjustment moves the image down.	
	Vertical Size	Right-Adjustment increases the vertical size, and Left-Adjustment decreases the vertical size.	
	Pincushion	Right-Adjustment makes the image sides convex, and Left-Adjustment makes the image concave.	
	Trapezoid	Right-Adjustment adjusts the image so the top is larger, and Left-Adjustment adjusts the image so that the bottom is larger.	Not available
	Pin Balance	Right-Adjustment moves the top and bottom of the image to the right, and Left-Adjustment moves the top and bottom of the image to the left.	Not available
	Parallelogram	Right-Adjustment tilts the sides of the image to the right, and Left-Adjustment tilts the sides of the image to the left.	
	Tilt (Rotation)	Right-Adjustment tilts the sides of the image to the right, and Left-Adjustment tilts the sides of the image to the left.	Not available
	Moire	Right-Adjustment increases the Moire correction, and Left-Adjustment decreases the Moire correction.	Not available

On-Screen Display Icons and Functions (Continued)

Icon	Function	Description	v52
	Degauss	This control demagnetizes the screen to reduce color impurities. HP suggests you not degauss more than once within a 30-minute period of time.	
	Color Temp	Right-Adjustment selects the color temperature to the right and Left-Adjustment selects the color temperature to the left.	Not available
	Reset	This control resets the monitor to factory default values.	
	Exit	This control exits the OSD menu.	

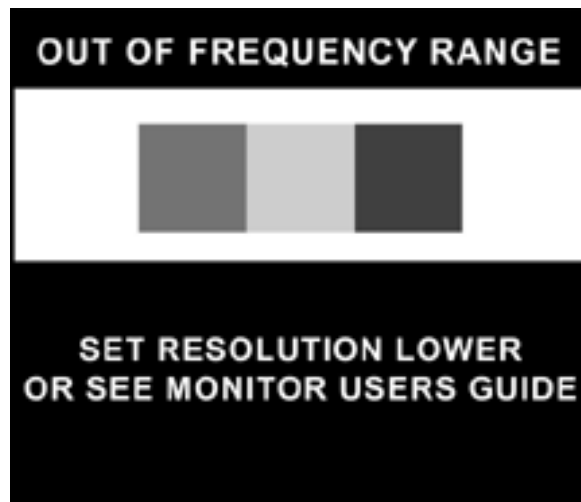
Monitor Messages

No Signal Message



If a No Signal message is displayed on your monitor, check to be sure your video cable is properly connected and ensure that your computer is powered on.

Out of Frequency Range Message



If an Out of Frequency Range message is displayed on your monitor, your video resolution and/or refresh rate are set higher than the levels your monitor supports.

To change the video resolution or refresh rate on your monitor, follow these steps:

1. Restart your computer.
2. Enter Safe Mode on your computer. Refer to your computer's operating system Help for instructions on entering Safe Mode.
3. Change your display settings to a supported setting (see "Technical Specifications").
4. Restart your computer so that the new settings take effect.

Using the Energy Saver Mode

Your monitor is designed to meet strict Environmental Protection Agency (EPA) Energy Star requirements for reduced power consumption. Using a combination of hardware and software functions, this energy-saving feature allows your computer to control your monitor's power consumption and reduce your monitor's power state when not in use.

Power Management Status for v52/15" Monitors

State	LED Color	Power Consumption	Description
On	Green	< 80 watts	Normal Operation
Sleep	Amber	< 5 watts	Monitor screen is blank. High voltage is off. Heater voltage is off. There is a brief warm-up period before returning to full power mode.



Your monitor's energy saver feature works only when your monitor is connected to a computer that also has energy saver features.

The Energy Saver utility, with its energy saving features, is available with all Microsoft Windows operating systems. Some features are also available in DOS. Refer to your computer's user guide for instructions on setting energy saver features (also referred to as power management features).

Troubleshooting

Solving Common Problems

The following table lists possible problems, the possible cause of each problem, and the recommended solutions.

Problem	Possible Cause	Solution
Screen is blank.	Power cord is disconnected.	Connect the power cord.
	Power switch is off.	Turn on power.
	Video cable is improperly connected.	Connect video cable properly.
	Screen blanking utility is active.	Depress any key on the keyboard or move the mouse.
Image appears blurred, indistinct, or too dark.	Brightness and contrast are too low.	Press the SELECT button to access the On-Screen Display. Select the Brightness and/or Contrast icons to adjust as needed.
Color is abnormal.	A magnetic object may be nearby.	Move the object farther away.
	Monitor may have been moved or inadvertently bumped.	Press the SELECT button to access the On-Screen Display. Select Degauss to activate. HP suggests you not degauss more than once within a 30-minute period of time.
Image is too large or too small.	Horizontal width may need adjustment.	Press the SELECT button to access the On-Screen Display. Select H. Size to adjust as needed.
	Vertical height may need adjustment.	Press the SELECT button to access the On-Screen Display. Select V. Size to adjust as needed.

Problem	Possible Cause	Solution
Image is not centered.	Horizontal position may need adjustment.	Press the SELECT button to access the On-Screen Display. Select H. Position to adjust as needed.
	Vertical position may need adjustment.	Press the SELECT button to access the On-Screen Display. Select V. Position to adjust as needed.
“No Signal” is displayed on screen.	Monitor video cable is disconnected.	Connect the 15-pin monitor video cable to the computer. Be sure that the computer power is on.
“Out of Frequency” is displayed on screen.	Video resolution and/or refresh rate are set higher than what your monitor supports.	Restart your computer and enter Safe Mode. Change your settings to a supported setting (see “Technical Specifications”). Restart your computer so that the new settings take effect.
No speaker power.	Speaker power cord is disconnected.	Check all speaker power connections and make sure they are properly connected.
	Power button on right-side speaker may be off.	Turn the power button clockwise on the side of the right-side speaker. Speaker LED should illuminate.
No sound from speakers.	Speaker audio plug may be disconnected from the back of the computer.	Make sure your audio input jack (green connector) is plugged into the back of your computer.
	Mute button may be activated.	Select the Speaker icon on your computer screen, and deselect Mute .
	Volume may be too low.	Increase volume by using keyboard volume control or clicking on the Speaker icon on your computer screen and increasing the volume level. Volume may also be adjusted on the speaker.

Problem	Possible Cause	Solution
No sound from left speaker.	Speaker audio cable is disconnected.	Make sure the speaker connection from the left-side speaker is connected to the rear of the right-side speaker.
	Left speaker balance may need to be adjusted.	Select the Speaker icon located on your Windows desktop, and adjust the left-right balance accordingly.
Monitor is overheating.	There is not enough air space to allow proper ventilation.	Leave at least 3 inches (76 mm) of ventilation space around the monitor, and do not place objects on top of the monitor.

Preparing to Call Technical Support

If you cannot solve a problem using the troubleshooting tips in this section, you may need to call technical support. Have the following information available when you call:

- The monitor
- Monitor model number
- Serial number for the monitor
- Purchase date on invoice
- Conditions under which the problem occurred
- Error messages received
- Hardware configuration
- Hardware and software you are using

Technical Specifications

HP Pavilion v52/15" Monitor

v52	
Screen Size	15" (38 cm) visual diagonal Viewable screen size 13.8" (35 cm)
Dot Pitch	0.28 mm (Diagonal)
Display Area Default	199 × 265 (mm) typical
Display Colors	Infinite
Display Resolutions	Refresh Rates
640 x 480	60 Hz
640 x 480	75 Hz
640 x 480	85 Hz
720 x 400	70 Hz
800 x 600	75 Hz
800 x 600	85 Hz (preferred resolution)
1024 x 768	60 Hz (maximum resolution)
Synchronization (Horizontal)	30 to 54 KHz
Synchronization (Vertical)	50 to 120 Hz
Max Pixel Clock	70 MHz Max.
Input Signal	Video RGB Analog Sync. TTL Separate
Video Cable	15-pin D-sub connector
Power Input Voltage Frequency	100 to 240V AC 50 ±3 to 60 ±3 Hz
Inrush Current	30 amps @ 120V 60 amps @ 220V
Power Consumption	80 W (Max.)
Dimension (W × H × D) Unpacked w/attached base	14.4 × 15.7 × 16.5 inches (maximum) 365 × 400 × 418 mm (maximum)
Weight	29 lb Max. 13 kg Max.

v52

Operating Temperature	50° F to 95° F 10° C to 35° C
Storage Temperature	-22° F to 140° F -30° C to 60° C
Humidity	20% to 80% (non-condensing)
Altitude	Up to 10,000 ft./3048 meters
MPRII	Some models meet MPRII
Plug and Play	Yes

Agency Regulatory Notices

Federal Communications Commission Notice

This equipment has been tested and found to comply with the limits for a Class B digital device, pursuant to Part 15 of the FCC Rules. These limits are designed to provide reasonable protection against harmful interference in a residential installation. This equipment generates, uses, and can radiate radio frequency energy and, if not installed and used in accordance with the instructions, may cause harmful interference to radio communications. However, there is no guarantee that interference will not occur in a particular installation. If this equipment does cause harmful interference to radio or television reception, which can be determined by turning the equipment off and on, the user is encouraged to try to correct the interference by one or more of the following measures:

- Reorient or relocate the receiving antenna.
- Increase the separation between the equipment and the receiver.
- Connect the equipment into an outlet on a circuit different from that to which the receiver is connected.
- Consult the dealer or an experienced radio or television technician for help.

Modifications

The FCC requires the user to be notified that any changes or modifications made to this device that are not expressly approved by Hewlett-Packard Company may void the user's authority to operate the equipment.

Cables

Connections to this device must be made with shielded cables with metallic RFI/EMI connector hoods to maintain compliance with FCC Rules and Regulations.

Declaration of Conformity for Products Marked with FCC Logo, United States Only

This device complies with Part 15 of the FCC Rules. Operation is subject to the following two conditions: (1) this device may not cause harmful interference, and (2) this device must accept any interference received, including interference that may cause undesired operation.

For questions regarding your product, contact:

Hewlett-Packard Company
P.O. Box 69200, Mail Stop 510101
Houston, Texas 77269-2000
USA

Or, call (+1) (208) 472-4357

For questions regarding this FCC declaration, contact:

Hewlett-Packard Company
P.O. Box 69200, Mail Stop 510101
Houston, Texas 77269-2000
USA

Or, call (+1) (281) 514-3333

Canadian Notice

This Class B digital apparatus meets all requirements of the Canadian Interference-Causing Equipment Regulations.

Avis Canadien

Cet appareil numérique de la classe B respecte toutes les exigences du Règlement sur le matériel brouilleur du Canada.

European Union Notice

Products bearing the CE marking comply with the EMC Directive (89/336/EEC) and the Low Voltage Directive (73/23/EEC) issued by the Commission of the European Community, and if this product has telecommunication functionality, the R&TTE Directive (1999/5/EC).

Compliance with these directives implies conformity to the following European Norms (in parentheses are the equivalent international standards and regulations):

- EN 55022 (CISPR 22) — Electromagnetic Interference
- EN55024 (IEC61000 - 4-2,3,4,5,6,8,11) — Electromagnetic Immunity
- EN61000-3-2 (IEC61000-3-2) — Power Line Harmonics
- EN61000-3-3 (IEC61000-3-3) — Power Line Flicker
- EN 60950 (IEC60950) — Product Safety

EPA Energy Star Compliance

Monitors that are marked with the Energy Star Logo meet the requirements of the EPA Energy Star program. As an Energy Star Partner, Hewlett-Packard Company has determined that this product meets the Energy Star guidelines for energy efficiency. Specific details on using the Energy Saving features can be found in the energy saver or power management section of the computer manual.

Power Cord Set Requirements

The power cord used with your monitor must be rated for the product and for the voltage and current marked on the product's electrical ratings label. The voltage and current rating of the cord should be greater than the voltage and current rating marked on the product. In addition, the cross section of the wire must be a minimum of 0.75 mm or 18AWG, and the length of the cord must be between 6 feet (1.8 m) and 12 feet (3.6 m). If you have questions about the type of power cord to use, contact your HP authorized service provider.

A power cord should be routed so that it is not likely to be walked on or pinched by items placed upon it or against it. Particular attention should be paid to the plug, electrical outlet, and the point where the cord exits from the product. The monitor power supply is provided with Automatic Line Switching (ALS). This feature allows the monitor to operate on input voltages between 100–120V or 220–240V.

The power cord set (flexible cord or wall plug) received with the monitor meets the requirements for use in the country/region where you purchased the equipment. For more information on power cord set requirements, contact your HP authorized dealer, reseller or service provider.

Free Manuals Download Website

<http://myh66.com>

<http://usermanuals.us>

<http://www.somanuals.com>

<http://www.4manuals.cc>

<http://www.manual-lib.com>

<http://www.404manual.com>

<http://www.luxmanual.com>

<http://aubethermostatmanual.com>

Golf course search by state

<http://golfingnear.com>

Email search by domain

<http://emailbydomain.com>

Auto manuals search

<http://auto.somanuals.com>

TV manuals search

<http://tv.somanuals.com>