



Software Guide

HP Notebook Series

Document Part Number:355385-001

November 2003

This guide explains how to manage notebook power, use multimedia software, and update or restore system software. It also provides instructions for using the Setup and support utilities.

© 2003 Hewlett-Packard Development Company, L.P.

Microsoft® and Windows® are U.S. registered trademarks of Microsoft Corporation. SD Logo is a trademark of its proprietor.

The information contained herein is subject to change without notice. The only warranties for HP products and services are set forth in the express warranty statements accompanying such products and services. Nothing herein should be construed as constituting an additional warranty. HP shall not be liable for technical or editorial errors or omissions contained herein.

Software Guide

HP Notebook Series

First Edition November 2003

Reference Number: nx9100/nx9105/nx9110/zv5000/zx5000

Document Part Number: 355385-001

Contents

1 Power

Selecting a Power Source	1-1
Standby, Hibernation and Shutdown	1-2
Standby	1-2
Hibernation	1-2
Shutdown	1-3
Choosing Standby, Hibernation or Shutdown	1-4
When Resuming After a Short Interval	1-4
When Resuming After a Week or More	1-4
When External Power Supply Is Disrupted or Uncertain	1-4
When Using Infrared or Drive Media	1-5
Standby, Hibernation and Shutdown Procedures	1-5
Identifying Power Controls and Indicators	1-6
Using the Default Power Settings	1-8
Turning the Notebook or Display On or Off	1-8
Initiating or Resuming from Hibernation	1-9
Initiating or Resuming from Standby	1-10
Using Emergency Shutdown Procedures	1-10
Setting Power Preferences	1-11
Accessing Power Options Window	1-11
Displaying Power Meter Icon on Taskbar	1-11
Setting or Changing a Power Scheme	1-12
Using a Security Password	1-12
Processor Performance Controls	1-13
Accessing Windows XP Processor Controls	1-13

2 Security

Security Features Quick Reference	2-2
About Passwords	2-3
Forgotten Passwords	2-3
Using HP and Windows Passwords.....	2-3
About QuickLock (Fn+F6)	2-4
About Power-On Passwords	2-5
Setting, Changing or Deleting Power-On Passwords	2-5
Entering Power-On Passwords	2-7
About Administrator Passwords	2-8
Setting, Changing or Deleting Administrator Passwords	2-8
Entering Administrator Passwords	2-11
Using Other Device Security	2-11
Protecting System Information	2-12
Using System Information.....	2-12
Setting System Information Options	2-12
Protecting Your Notebook	2-13
Using Security Software Measures	2-14
Connecting an Optional Security Cable.....	2-15

3 Multimedia

Using CDs and DVDs	3-1
Protecting Playback.....	3-1
Observing the Copyright Warning	3-2
Using Hotkeys and Quick Launch Buttons (Select Models)	3-2
HP Image Zone (Select Models).....	3-4
InterVideo Home Theater (Select Models).....	3-5
Reprogramming the Quick Launch Buttons (Select Models)	3-5

Playing Audio and Video CDs with Windows Media Player	3-6
Playing CDs.	3-6
Playing DVDs and Video CDs with InterVideo WinDVD (Select Models)	3-6
General DVD Tips.	3-6
Playing DVDs or Video CDs.	3-7
Using DVD Region Settings	3-7
Changing Region Settings	3-8
Using InterVideo WinDVD Creator (Select Models)	3-8
Preparing to Use InterVideo WinDVD Creator	3-9
Choosing Recording Media.	3-9
Creating DVDs and Video CDs.	3-10
Sonic RecordNow!	3-10

4 Software Updates and Restorations


Updating Software	4-1
Accessing Notebook Product Information	4-2
Accessing Notebook ROM Information	4-2
Downloading and Installing Software Updates	4-3
Downloading and Installing ROM Updates	4-4
Downloading and Installing Other Software.	4-7
Recovery Procedures	4-8
Before You Begin	4-9
Using the System Restore Utility.	4-10
Setting a Restore Point	4-10
Restoring to a Restore Point	4-10
Repairing or Reinstalling Drivers	4-11
Repairing or Reinstalling Applications	4-12
Reinstalling Applications from Your Hard Drive	4-12
Reinstalling Applications from the Driver Recovery CD	4-13

- Repairing or Reinstalling the Operating System 4-13
 - Repairing the Operating System 4-14
 - About Operating System Reinstallation 4-15
 - Backing Up Your Data 4-15
 - Reinstalling the Operating System 4-16
- Installing a Retail Version of an Operating System. 4-19
- Configuring Your Notebook 4-19
 - Opening the Setup Utility 4-19
 - Navigating and Selecting in the Setup Utility 4-20
 - Restoring Setup Utility Default Settings 4-23
 - Exiting the Setup Utility 4-23
- Using the Help and Support Center 4-23
- Using Support Telephone Numbers. 4-25
 - Obtaining Support Telephone Numbers 4-25
 - Preparing to Call Technical Support 4-26

Index

Selecting a Power Source

The notebook can run on *internal* power from a battery pack or on *external* power from an AC adapter and other devices. The following table describes the best power source for general tasks.

Task	Use This Power Source:
Work in most software applications.	<ul style="list-style-type: none"> ■ Charged battery pack in the notebook. ■ External power, such as an AC adapter or optional HP Notebook Expansion Base.
Charge or calibrate a battery pack in the notebook.	<p>External power, such as an AC adapter or optional HP Notebook Expansion Base.</p> <p> For more details, refer to the “Battery Packs” chapter in the <i>Hardware Guide</i> on this CD.</p>
Install or modify system software or write to any drive media.	External power, such as an AC adapter or optional HP Notebook Expansion Base.

Standby, Hibernation and Shutdown

This section describes Standby, Hibernation, and shutdown, and explains when to implement them. Standby and Hibernation are energy-saving features that can be initiated by you or by the system.

The amount of time a battery pack can hold a charge to support Standby or Hibernation varies by notebook configuration and the condition of the battery pack.

Standby

Standby reduces power to system components that are not in use. When Standby is initiated, your work is saved in random access memory (RAM) and the screen is cleared. When you resume from Standby, your work returns to the screen where you left off.

- Saving your work before initiating Standby is not usually necessary, but it is a recommended precaution.
- When the notebook is in Standby, the power/Standby light blinks.

Hibernation

Hibernation saves system memory to the hard drive, takes a snapshot of the notebook image, and shuts down the notebook. When you resume from Hibernation, your work returns to the screen exactly as you left it.



CAUTION: If the configuration of the notebook system is changed during Hibernation, resuming operation from Hibernation may not be possible. When the notebook is in Hibernation:

- Do not add or remove memory modules.
 - Do not insert or remove the hard drive.
 - Do not connect or disconnect external devices.
 - Do not insert or remove any drive media.
 - Do not change the notebook configuration.
-



CAUTION: To prevent loss of data during a low-battery condition, do not disable Hibernation when the battery pack is in a low-battery condition.



CAUTION: If Hibernation is disabled, the system does not automatically save your system memory when the notebook reaches a critical low-battery condition.

When possible, save your work before initiating Hibernation so that no data is lost. Do not change the notebook configuration during Hibernation.

If a power-on password has been set, the password must be entered to resume from Hibernation. If you cannot resume from Hibernation when power is restored to the system, you will be prompted to delete the restoration data and proceed with system boot. Unsaved data will be lost.

Hibernation is enabled by default, but can be disabled. To verify that Hibernation is enabled, select Start > Control Panel > Performance and Maintenance > Power Options. Then select the Hibernate tab. Make sure that the Enable Hibernation check box is selected.

Shutdown

Shutdown turns off the notebook. Whether to leave a battery pack in the notebook or in storage depends on how you work.

- Leaving the battery pack in the notebook enables the battery pack to charge whenever the notebook is connected to external power and also protects your work during a power outage.
- A battery pack in the notebook discharges more quickly, even when the notebook is turned off, than a battery pack that has been removed from the notebook and is stored in a cool, dry location.

Choosing Standby, Hibernation or Shutdown

Your choice of Standby, Hibernation, or shutdown will depend on how you work. The amount of time a battery pack can support Standby or Hibernation or hold a charge varies by notebook configuration and the condition of the battery pack. A fully charged new battery pack can typically support Standby for up to 48 hours and Hibernation for several weeks.

When Resuming After a Short Interval

Initiate Standby for shorter intervals of inactivity and Hibernation for longer intervals or for more power conservation.

- Initiating Standby clears the screen and uses less power than leaving the notebook on, and your work returns quickly to the screen when you resume from Standby.
- Initiating Hibernation clears the screen and uses much less power than Standby. Returning to work saved in Hibernation takes longer than returning to work saved in Standby, but it is faster than returning to your place manually after restarting the notebook.

When Resuming After a Week or More

If the notebook will be idle for a week or more, shut down the notebook to extend the life of an inserted battery pack. If you remove the battery pack during this time, store it in a cool, dry location.

When External Power Supply Is Disrupted or Uncertain

If an external power supply is uncertain or disrupted—for example, because of an electrical storm—save your work, and then initiate Hibernation or shut down the notebook.

When Using Infrared or Drive Media



CAUTION: To prevent possible video and audio degradation and loss of audio or video playback functionality, do not initiate Standby or Hibernation while using drive media.

Standby and Hibernation interfere with the use of infrared communication and drive media. Infrared is included on select notebook models.

- If the notebook is in Standby or Hibernation, you cannot initiate an infrared transmission.
- If Standby or Hibernation is accidentally initiated while drive media (such as a diskette, disk, CD, or DVD) is in use:
 - Your playback may be interrupted.
 - You may see a warning message: “Putting the computer into Hibernation or Standby may stop the playback. Do you want to continue?” Select No.
 - Resume from Hibernation or Standby by briefly pressing the power button.
 - Audio and video may resume, or you may need to restart the media.

Standby, Hibernation and Shutdown Procedures

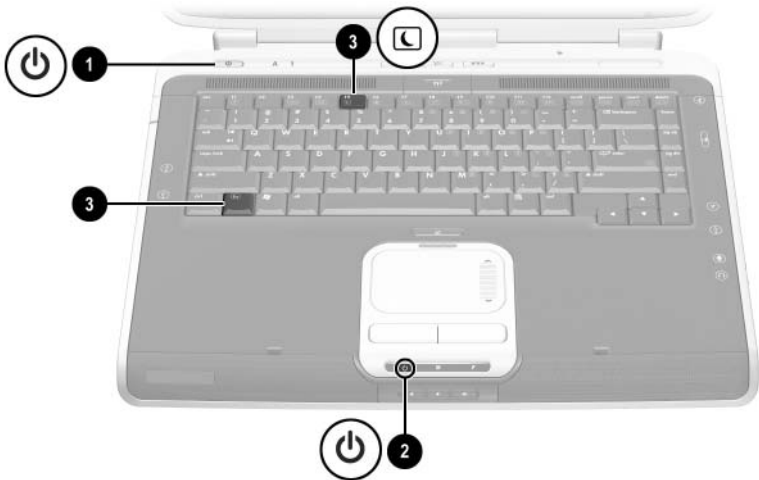
This section explains the default Standby, Hibernation, and shutdown procedures and includes information about turning the display on or off. Refer to the illustration that most closely matches your notebook.

Identifying Power Controls and Indicators

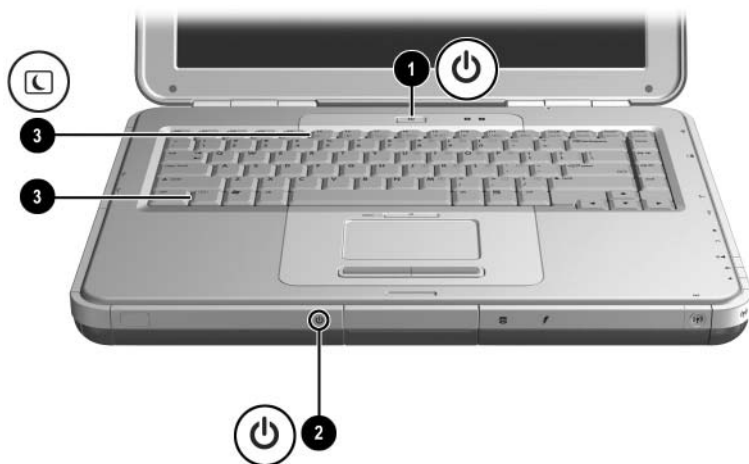


In this guide, the function keys are capitalized (**Fn**, **F5**). The function keys on your keyboard may be lowercase (**fn**, **f5**).

- ❶ Power button
- ❷ Power/Standby light
- ❸ **Fn+F5** hotkey (to initiate Standby)



Identifying power controls and indicators




Identifying power controls and indicators

Using the Default Power Settings



The following tables describe the default power settings on the notebook. You can change many of these settings according to your preferences. If you want to change the default settings, see [“Setting Power Preferences”](#) later in this chapter.

Turning the Notebook or Display On or Off

Task	Procedure	Results
Turn on the notebook.	<p>Press the power button.</p> <p> Pressing the power button returns the notebook to “on” from Standby, Hibernation, or shutdown.</p>	<ul style="list-style-type: none"> ■ Power/Standby light turns on. ■ Operating system loads.
Shut down the notebook.*	<ul style="list-style-type: none"> ■ For Windows XP Professional: Select Start > Shut Down > Shut Down. ■ For Windows XP Home: Select Start > Turn off Computer > Turn off. 	<ul style="list-style-type: none"> ■ Power/Standby light turns off. ■ Operating system shuts down. ■ Notebook turns off.
Turn off the display if the notebook is closed while power is on.	No action required.	Closing the notebook activates the display switch that turns off the display.

*If the system is unresponsive, and you are unable to shut down the notebook with these procedures, press and continue to hold down the power button for at least 4 seconds. See [“Using Emergency Shutdown Procedures”](#) later in this chapter.

Initiating or Resuming from Hibernation

Task	Procedure	Result
User-initiated Hibernation.	<p>With the notebook on:</p> <ul style="list-style-type: none"> ■ Briefly press the power button <p>-or-</p> <ul style="list-style-type: none"> ■ Select Start > Shut Down > Hibernate. (If the Hibernate option is not displayed, press and hold shift.) <p> In the Power Options window, you can change the default settings for the power button or the display switch.</p>	<ul style="list-style-type: none"> ■ Power/Standby light turns off. ■ Screen clears.
System-initiated Hibernation (with Hibernation enabled).	<p>If the notebook is running on external power, the system will not initiate Hibernation.</p> <hr/> <p>If the notebook is running on battery power, the system initiates Hibernation:</p> <ul style="list-style-type: none"> ■ After 30 minutes of notebook inactivity, or ■ When an inserted battery pack reaches a critical low-battery condition (3 percent of a full charge remaining). 	<ul style="list-style-type: none"> ■ Power/Standby light turns off. ■ Screen clears.
Resume from user-initiated or system-initiated Hibernation.	<p>Press the power button.</p> <p> If Hibernation was initiated by a critical low-battery condition, attach AC power or a charged battery pack to resume.</p>	<ul style="list-style-type: none"> ■ Power/Standby light turns on. ■ Your work returns to the screen.

Initiating or Resuming from Standby

Task	Procedure	Result
User-initiated Standby.	With the notebook on: <ul style="list-style-type: none"> ■ Press Fn+F5, or ■ Select Start > Shut Down > Standby. 	<ul style="list-style-type: none"> ■ Power/Standby light blinks. ■ Screen clears.
System-initiated Standby.	If the notebook is running on external power, the system will not initiate Standby. If the notebook is running on battery power, the system will initiate Standby after 10 minutes of notebook inactivity.	<ul style="list-style-type: none"> ■ Power/Standby light blinks. ■ Screen clears.
Resume from user-initiated or system-initiated Standby.	Briefly press the power button, TouchPad, left or right TouchPad button, or any keyboard key.	<ul style="list-style-type: none"> ■ Power/Standby light turns on. ■ Your work returns to the screen.

Using Emergency Shutdown Procedures

If the notebook is unresponsive to the Microsoft® Windows® shutdown procedure, try one of the following emergency shutdown procedures:

- If the notebook is running Windows XP Professional, press **ctrl+alt+del**. Select Shut down from the drop-down list, and then select OK.
- If the notebook is running Windows XP Home or does not respond to **ctrl+alt+del**, press and hold the power button for 5 seconds.
- Press **Fn+power** button.
- Unplug the notebook from external power and remove the battery pack.

Setting Power Preferences

Many of the default power settings, such as timeouts, alarms, and power button settings, can be changed in the Power Options window. For example, you can set an audio alert to warn you when the battery reaches a low-power condition.



On some notebook models, processor performance can also be managed in the Power Options window. For details, see [“Processor Performance Controls”](#) later in this chapter.

Accessing Power Options Window

To access the Power Options window:

- Select the Power Meter icon on the taskbar, or
- Select Start > Control Panel > Performance and Maintenance > Power Options.

Displaying Power Meter Icon on Taskbar

To show the Power Meter icon on the taskbar:

1. Access the Power Options window (see previous section).
 2. Select the Advanced tab.
 3. Select the Always Show Icon on the Taskbar check box.
 4. Select the OK button.
-



The Power Meter icon changes shape to indicate whether the notebook is running on battery power or external power. Select the icon at any time to display the Power Options window.



If you cannot see an icon that you have placed on the taskbar, the icon may be hidden. Select the arrow or thick vertical bar on the taskbar and expand to view the icons.

Setting or Changing a Power Scheme

The Power Schemes tab in the Power Options window assigns power levels to system components. You can assign different schemes depending on whether the notebook is running on a battery pack or AC power.

You can also set a Power Scheme that initiates Standby or turns off the display or hard drive after a time interval (timeout) that you specify.

To set or change a Power Scheme:

1. Access the Power Options window (see previous section).
2. Select the Power Schemes tab.
3. Select options from the drop-down list.
4. Select Save As and name the new Power Scheme.
5. Select OK.

Using a Security Password

You can add a security feature that prompts you for a password when the notebook turns on or resumes from Standby or Hibernation.

To set a password prompt:

1. Access the Power Options window.
2. Select the Advanced tab.
3. Select the Prompt for password when the computer resumes from Standby check box.
4. Select OK.

For more information about using security passwords, see [“About Power-On Passwords”](#) in Chapter 2.

Processor Performance Controls

Windows XP Home and Windows XP Professional provide unique software that allows the user to control processor performance. The CPU (central processing unit) speed can be set for optimal performance or for optimal power conservation.

For example, the software can be set to trigger an automatic change in processor speed when the power source changes between AC power and battery power, or when notebook use changes between active and idle.

Accessing Windows XP Processor Controls

To access Windows XP Home and Windows XP Professional processor performance controls, select Start > Control Panel > Performance and Maintenance > Power Options > Power Schemes.

The user sets the desired Power Scheme and that, in turn, sets the processor controls. Each Power Scheme for AC power or battery power equates to one of the following processor levels:

- None: Always runs at the highest performance state.
- Adaptive: Performance state is selected based on CPU demand.
- Degrade: Starts at lowest performance state, then uses linear performance reduction (stop clock throttling) as the battery discharges.
- Constant: Always runs at the lowest performance state.

When you choose a Power Scheme, you are setting the AC power and battery power modes shown in the following table. No other user intervention is required to control the performance of your notebook processor.

Power Scheme	AC Power	Battery Power
Home/Office Desk	None	Adaptive
Portable/Laptop	Adaptive	Adaptive
Presentation	Adaptive	Degrade
Always On	None	None
Minimal Power Management	Adaptive	Adaptive
Max Battery	Adaptive	Degrade


2

Security

This chapter describes some of the security features that may be provided on your notebook. For information about Windows XP Home or Windows XP Professional security features, refer to your operating system documentation.

Security Features Quick Reference

To Protect Against This Risk	Use This Feature
Unauthorized use of the notebook	QuickLock and power-on password
Unauthorized access to the Setup utility	Administrator password
Unauthorized access to the processor serial number and other system identification information	System Information
Software viruses	Norton AntiVirus software
Unauthorized removal of the notebook	Security cable slot (used with an optional security cable)

 The purpose of security solutions is to act as a deterrent. These solutions do not prevent the product from being mishandled or stolen.

Your notebook also has a DriveLock security feature. For more information about this feature, refer to the notebook's online Help and Support Center by selecting Start > Help and Support.

About Passwords

Forgotten Passwords

Most security features use passwords. When you set a password, write it down and store it in a secure location.

- If you forget your power-on password or Administrator password, you cannot start the notebook or resume from Hibernation until an authorized service provider resets the notebook. Refer to the *Worldwide Telephone Numbers* booklet included with the notebook to contact an HP Customer Care Center.
- If you forget the DriveLock user password but know your DriveLock master password, you can remove DriveLock protection from the drive.
- If you forget both your user and master DriveLock passwords, the hard drive is permanently unusable.

Using HP and Windows Passwords

HP security features and Windows operating system security features work independently from each other. For example, a device disabled in Setup cannot be enabled in Windows.

Also, you must use an HP password at an HP password prompt and a Windows password at a Windows password prompt. For example:

- If a power-on password is set, the power-on password (not a Windows password) must be entered when the notebook starts up or resumes from Hibernation.
- If you set Windows to prompt for a password before resuming from Standby, a Windows password (not a power-on password) must be entered to resume from Standby.

- An Administrator password and a Windows Administrator password are not interchangeable.

However, the same word or series of letters, numerals, or slashes used for an HP password can also be used for *another* HP password *or* as a Windows password, with these considerations:

- ❑ HP passwords can be any combination of up to 32 letters and numbers and are not case sensitive.
- ❑ HP passwords must be set and entered with the same type of keys. For example, an HP password set with *keyboard* number keys will not be recognized if it is entered with internal *keypad* number keys. (For information about the internal keypad, refer to the “TouchPad and Keyboard” chapter in the *Hardware Guide* on this CD.)

About QuickLock (Fn+F6)



In this guide, the function keys are capitalized (**Fn, F5**). The function keys on your keyboard may be lowercase (**fn, f5**).

The QuickLock operating system security feature disables the keyboard and displays the logon screen. QuickLock does not disable the TouchPad.

Before you can use this feature, you must set a Windows system password. For instructions, refer to your operating system documentation.

After you set your Windows system password:

- To initiate QuickLock, press the **Fn+F6** hotkey.
- To disable QuickLock, enter your Windows system password.

About Power-On Passwords

A power-on password prevents unauthorized use of the notebook. After being set, a power-on password must be entered each time the notebook is turned on or restarted, or when the notebook resumes from Hibernation. A power-on password:

- Does not display as it is set, entered, changed, or deleted.
- Must be set and entered with the same keys. For example, a password set with *keyboard* number keys will not be recognized if entered with embedded *keypad* number keys.
- Can include up to 8 alphanumeric characters and is not case sensitive.

Setting, Changing or Deleting Power-On Passwords

A power-on password is set, changed, or deleted in the Setup utility.

Setting a Power-On Password

To set a power-on password:

1. Open the Setup utility by pressing **F10** while the “Press <F10> to enter setup” prompt is displayed in the lower left corner of the screen.
2. Select Security from the menu bar. (To select a menu, use the arrow keys.)
3. Select the Power-On Password field.
4. Type the password in the Enter New Password field, and then press **enter**.
5. Type the password in the Confirm New Password field, and then press **enter**.

6. When you are prompted to continue, press **enter**.
7. To save your preferences and exit the Setup utility:
 - a. Press **esc** (or select Exit from the menu bar).
 - b. Select Exit Saving Changes.
 - c. Then follow the instructions on the screen.

Changing a Power-On Password

To change a power-on password:

1. Open the Setup utility by pressing **F10** while the “Press <F10> to enter setup” prompt is displayed in the lower left corner of the screen.
2. Select Security from the menu bar. (To select a menu, use the arrow keys.)
3. Select the Power-On Password field.
4. Type the current password in the Enter Current Password field, and then press **enter**.
5. Type the new password in the Enter New Password field, and then press **enter**.
6. Type the new password in the Confirm New Password field, and then press **enter**.
7. When you are prompted to continue, press **enter**.
8. To save your preferences and exit the Setup utility:
 - a. Press **esc** (or select Exit from the menu bar).
 - b. Select Exit Saving Changes.
 - c. Then follow the instructions on the screen.

Deleting a Power-On Password

To delete a power-on password:

1. Open the Setup utility by pressing **F10** while the “Press <F10> to enter setup” prompt is displayed in the lower left corner of the screen.
2. Select Security from the menu bar. (To select a menu, use the arrow keys.)
3. Select the Power-On Password field.
4. Type the current password in the Enter Current Password field, and then press **enter** 3 times.
5. When you are prompted to continue, press **enter**.
6. To save your preferences and exit the Setup utility:
 - a. Press **esc** (or select Exit from the menu bar).
 - b. Select Exit Saving Changes.
 - c. Then follow the instructions on the screen.

Entering Power-On Passwords

When you turn the notebook on, restart it, or resume from Hibernation, you are prompted for a password. Type your password using the same keys you used to set the password, and then press **enter**. After 3 unsuccessful attempts to enter the password, you must restart the notebook to try again.

About Administrator Passwords

An Administrator password protects the configuration settings and system identification information in the Setup utility. After it is set, this password must be entered to access Setup. An Administrator password:

- Is not interchangeable with a Windows Administrator password, although both can use the same word or series of letters, numbers, or slashes.
- Does not display as it is set, entered, changed, or deleted.
- Must be set and entered with the same keys. For example, an Administrator password set with *keyboard* number keys will not be recognized if you enter it with internal *keypad* number keys.
- Can include any combination of up to 32 letters and numbers and is not case sensitive.

Setting, Changing or Deleting Administrator Passwords

An Administrator password is set, changed, or deleted in the Setup utility.

Setting an Administrator Password

To set an Administrator password:

1. Open the Setup utility by turning on (not restarting) the notebook.
2. Press **F10** while the “Press <F10> to enter setup” prompt is displayed in the lower left of the screen.

For navigation instructions, press **F1**.

3. Select Security from the menu bar. (To select a menu, use the arrow keys.)
4. Select the Administrator password, and then press **enter**.

5. Type the password in the New Password field, and then press **enter**.
6. Type the password in the Confirm New Password field, and then press **enter**.
7. When you are prompted to continue, press **enter**.
8. To save your preferences and exit the Setup utility:
 - a. Press **esc** (or select Exit from the menu bar).
 - b. Select Exit Saving Changes.
 - c. Then follow the instructions on the screen.

Your preferences are set as you exit Setup and are in effect when the notebook restarts.

Changing an Administrator Password

To change an Administrator password:

1. Open the Setup utility by turning on (not restarting) the notebook.
2. Press **F10** while the “Press <F10> to enter setup” prompt is displayed in the lower left of the screen.
For navigation instructions, press **F1**.
3. Select Security from the menu bar. (To select a menu, use the arrow keys.)
4. Select the Administrator password, and then press **enter**.
5. Type the current password in the Enter Current Password field, and then press **enter**.
6. Type the new password in the Enter New Password field, and then press **enter**.
7. Type the password in the Confirm New Password field, and then press **enter**.

8. When you are prompted to continue, press **enter**.
9. To save your preferences and exit the Setup utility:
 - a. Press **esc** (or select Exit from the menu bar).
 - b. Select Exit Saving Changes.
 - c. Then follow the instructions on the screen.

Your preferences are set as you exit Setup and are in effect when the notebook restarts.

Deleting an Administrator Password

To delete an Administrator password:

1. Open the Setup utility by turning on (not restarting) the notebook.
2. Press **F10** while the “Press <F10> to enter setup” prompt is displayed in the lower left of the screen.
For navigation instructions, press **F1**.
3. Select Security from the menu bar. (To select a menu, use the arrow keys.)
4. Select the Administrator password, and then press **enter**.
5. Type the current password in the Enter Current Password field, and then press **enter**.
6. When you are prompted to continue, press **enter**.
7. To save your preferences and exit the Setup utility:
 - a. Press **esc** (or select Exit from the menu bar).
 - b. Select Exit Saving Changes.
 - c. Then follow the instructions on the screen.

Your preferences are set as you exit Setup and are in effect when the notebook restarts.

Entering Administrator Passwords

At the Setup prompt, type your password (using the same type of keys you used to set the password), and then press **enter**. After 3 unsuccessful attempts to enter the Administrator password, you must restart the notebook to try again.

Using Other Device Security

The Device Security feature also allows a user or administrator to set the system startup preferences by enabling or disabling notebook devices. To set system startup preferences in Device Security:

1. Open the Setup utility by turning on (not restarting) the notebook.
2. Press **F10** while the “Press <F10> to enter setup” prompt is displayed in the lower left of the screen.
3. Select Security from the menu bar. (To select a menu, use the arrow keys.)
4. In the Device Security field:
 - a. Select Enable/Disable floppy boot during boot time.
 - b. Select Enable/Disable CD-ROM boot during boot time.
5. To save your preferences and exit the Setup utility.
 - a. Press **esc** (or select Exit from the menu bar).
 - b. Select Exit Saving Changes.
 - c. Then follow the instructions on the screen.

Protecting System Information

Using System Information

System Information options allow you to:

- Display or enter the notebook serial number, asset tag, and ownership tag.
- Display a battery pack serial number.

Setting System Information Options

1. Open the Setup utility by turning on (not restarting) the notebook.
2. Press **F10** while the “Press <F10> to enter setup” prompt is displayed in the lower left of the screen.
For navigation instructions, press **F1**.
3. To view general system information, select Main menu > System Information.
4. To view or enter identification values for system components, select Main menu > System IDs.
5. To confirm the information or your preferences, press **F10**.
6. To save your preferences and exit the Setup utility.
 - a. Press **esc** (or select Exit from the menu bar).
 - b. Select Exit Saving Changes.
 - c. Then follow the instructions on the screen.

Your preferences are set as you exit Setup and are in effect when the notebook restarts.

Protecting Your Notebook

When you use your notebook to access a network or the Internet, you expose the notebook to security and privacy threats in the form of viruses, worms, and hackers. These security and privacy occurrences can potentially disable the notebook operating system, software applications, and personal files. Using a combination of software and hardware security measures can significantly help in the prevention, the detection, and often the repair of these occurrences.

Using Security Software Measures

HP recommends that you follow these three protective security software measures to improve your notebook security and to reduce the severity of security access threats.

Step	Use this Security Measure	For More Information
1	<p>Install antivirus software before connecting to the Internet or a network. (Some notebook models are shipped with antivirus software.)</p> <p>Keep the virus definition files up to date to maintain protection against newly discovered viruses.</p>	<p>Microsoft: http://www.microsoft.com/security/antivirus</p> <p>Symantec: http://securityresponse.symantec.com Refer to the online Help File within the antivirus software.</p>
2	<p>Install Microsoft Windows updates by downloading the updates as they become available.</p>	<p>http://windowsupdate.microsoft.com</p>
3	<p>Install the Microsoft Internet Connection Firewall or an equivalent firewall.</p>	<p>Refer to the Help and Support Center. Select Start > Help & Support. Enter "Firewall" in the Search field and press enter.</p>



Using a firewall can block access to Internet games, or to printer and file sharing within a network. If this occurs, you can disable the firewall or contact your firewall provider for configuration information. Disabling the firewall will leave you unprotected.

Connecting an Optional Security Cable

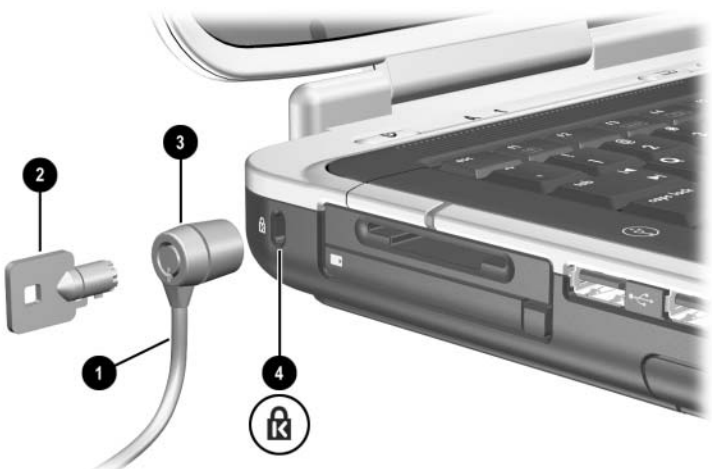


The purpose of security solutions is to act as a deterrent. These solutions do not prevent the product from being mishandled or stolen.

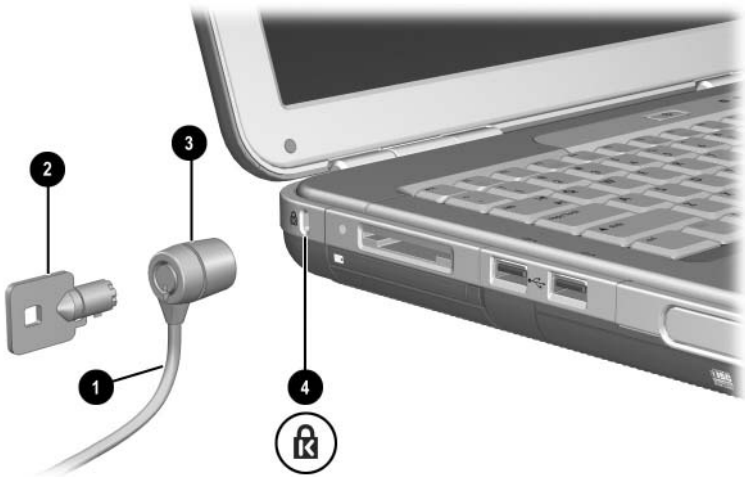
Refer to the illustration that is the closest match to your notebook.

To install an optional security cable:

1. Loop the security cable **1** around a secured object.
2. Insert the key **2** into the cable lock **3**.
3. Insert the cable lock (with the key inserted) into the security cable slot **4** on the notebook.
4. Turn the key counterclockwise and remove it.



Connecting the optional security cable



Connecting the optional security cable

Using CDs and DVDs

This chapter provides general instructions for using select multimedia hotkeys and Quick Launch buttons, playing CDs and DVDs, and using multimedia software. Multimedia software applications included with your notebook vary by model.

Protecting Playback



CAUTION: To prevent possible video and audio degradation and loss of audio or video playback functionality, do not initiate Standby or Hibernation while using drive media.



CAUTION: Do not insert or remove a device while running multimedia applications, because the application may pause or stop playing.

If Standby or Hibernation is accidentally initiated while drive media (such as a diskette, disk, CD, CD-RW, or DVD) is in use:

- Your playback may be interrupted.
- You may see a warning message: “Putting the computer into Hibernation or Standby may stop the playback. Do you want to continue?” Select No.

Resume from Hibernation or Standby by pressing the power button. Audio and video may resume automatically, or you may need to restart the media.


Observing the Copyright Warning





It is a criminal offense, under applicable copyright laws, to make unauthorized copies of copyright-protected material, including computer programs, films, broadcasts, and sound recordings. This notebook should not be used for such purposes.

Using Hotkeys and Quick Launch Buttons (Select Models)



In this guide, the function keys are capitalized (**Fn**, **F5**). The function keys on your keyboard may be lowercase (**fn**, **f5**).

Hotkeys are preset combinations of the **Fn** key and one of the function keys. The **Fn+F9** through **Fn+F12** hotkeys  perform many of the same tasks as Windows Media Player or InterVideo WinDVD.

- To play, pause, or resume an audio CD or DVD, press the **Fn+F9** hotkey .
- To stop an audio CD or DVD, press the **Fn+F10** hotkey .
- To play the previous track of an audio CD or DVD, press the **Fn+F11** hotkey .
- To play the next track of an audio CD or DVD, press the **Fn+F12** hotkey .



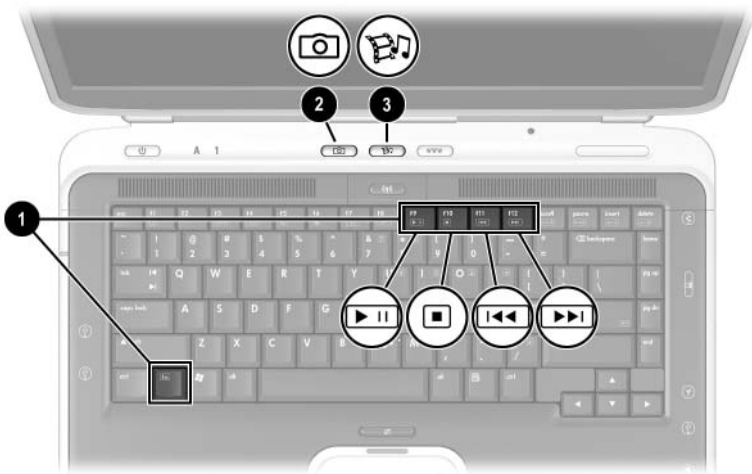
The 4 hotkeys work correctly with DVDs, but are not designed for use with video CDs (VCDs).

For details about all of the keyboard hotkeys, refer to the “TouchPad and Keyboard” chapter in the *Hardware Guide* on this CD.

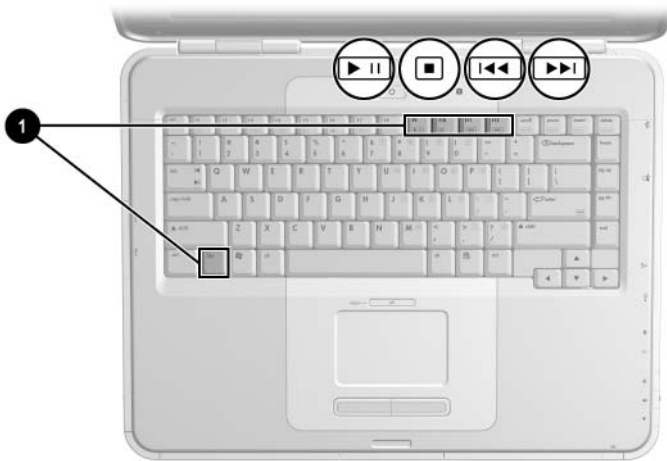
Refer to the illustration that most closely matches your notebook.

Select notebook models have 2 multimedia Quick Launch buttons—the Picture button and the Media button—to access default software applications.

- To access the default photo and imaging software application, press the Picture button ❷. This opens the My Pictures folder on your screen, and then launches the default photo and imaging software application.
- To open the default multimedia software application, press the Media button ❸.



Identifying the multimedia hotkeys and Quick Launch buttons



Identifying the notebook multimedia hotkeys

HP Image Zone (Select Models)

HP Image Zone is a digital and imaging software application. The application manages digital photos, scanned images, and video clips. It also provides tools for editing images, sending images to friends and family, and using images in projects and multimedia CDs.

Only select models have this software. To launch HP Image Zone, press the Picture button. This will access the My Pictures folder and then launch HP Image Zone. Refer to the HP Image Zone online Help for feature descriptions and detailed user instructions.

InterVideo Home Theater (Select Models)

InterVideo Home Theater is a multimedia software application. The application records and plays digital media content: audio CDs, MP3s, pictures, video clips, DVDs, and VCDs.

Only select models have this software. To launch InterVideo Home Theater, press the Media button. Refer to the Home Theater online Help for feature descriptions and detailed user instructions.

Reprogramming the Quick Launch Buttons (Select Models)

A Quick Launch button can be assigned to any software application, an Internet or network destination, or a data file. For example, a Quick Launch button can be assigned to open your Internet browser to a favorite Web page; to open an application, such as Microsoft Word; or to open a specific file, such as an Excel worksheet.

Button assignments can be grouped into schemes. When you select a scheme, only the button assignments within that scheme are active. Button assignments and schemes are set up, changed, or deleted in the Quick Launch buttons window.

To reprogram a button:

1. Select Start > Control Panel > Printers and Other Hardware > Quick Launch Buttons.
2. On the Settings tab, select the button you want to reprogram.
3. Type a label for the button, and then select the application, document, folder, or Web site you want the button to open.

If you want an icon for the button to appear on the taskbar or on the desktop, select that option on the Advanced tab.

Playing Audio and Video CDs with Windows Media Player

The Windows Media Player software application is included with the notebook operating system.

Playing CDs

To open Windows Media Player to play a CD:

1. Insert a CD into the optical drive and close the tray. Wait several seconds. If Windows Media Player does not open, access the software by selecting Start > All Programs > Windows Media Player.
2. Select the Play button to play the CD and the Stop button to stop the CD, or use the hotkeys described in [“Using Hotkeys and Quick Launch Buttons \(Select Models\)”](#) in this chapter.



To access Windows Media Player Help, select Help on the Windows Media Player menu bar.

Playing DVDs and Video CDs with InterVideo WinDVD (Select Models)

InterVideo WinDVD is a software application that enables you to play DVD movies or video CDs.

General DVD Tips

In addition to the instructions in the WinDVD Player Help file, the following tips may be useful:

- If the notebook is docked in an optional HP Notebook Expansion Base, dock or undock the notebook *before* starting a DVD (not *while* playing a DVD).
- For best playback quality, save your files and close all open applications before playing a DVD.

- If the DVD displays a “Playback Of Content From This Region Is Not Permitted” error message, change the region setting as described in the next section, and then restart the DVD.
- For more information about using WinDVD, select Help on the WinDVD menu bar.

Playing DVDs or Video CDs

To play a DVD or video CD:

1. Insert the DVD or video CD into the optical drive.
2. If Intervideo WinDVD does not open after a short pause, select Start > All Programs > InterVideo WinDVD > InterVideo WinDVD.
3. Follow the instructions on the screen.

Using DVD Region Settings

Most DVDs that contain copyrighted files also contain region codes. The region codes help protect copyrights internationally.

You can play a DVD containing a region code only if the region code on the DVD matches the region setting on your DVD drive.

If the region code on a DVD does not match the region setting on your drive, a “Playback Of Content From This Region Is Not Permitted” message is displayed when you insert the DVD. To play the DVD, you must change the region setting on your DVD drive.



CAUTION: The region setting on your DVD drive can be changed only 5 times.

- The region setting you select the fifth time becomes the permanent region setting on the drive.
 - The number of allowable region changes remaining on the drive is displayed in the Remaining Times Until Permanent field in the WinDVD window. The number in the field includes the fifth and permanent change.
-

Changing Region Settings

To change the region setting on drive media:

1. Insert the DVD into the optical drive.
2. If the WinDVD window does not open after a short pause, select Start > All Programs > InterVideo WinDVD > InterVideo WinDVD.
3. Select the Properties icon in the lower right corner of the window.
4. Select the General tab.
5. Select the button for the region.
6. Select the OK button.

Using InterVideo WinDVD Creator (Select Models)

InterVideo WinDVD Creator allows you to create digital video movies. You can capture video from your digital video camcorder, edit the video, author menus and chapters, and burn your movie to a DVD or a video CD. Before you can create DVDs or video CDs on some notebook models, you must install this application using the InterVideo WinDVD Creator CD included with the notebook.

Preparing to Use InterVideo WinDVD Creator



CAUTION: To prevent loss of data and damage to a DVD:

- Before writing to a DVD, connect the notebook to a reliable external power source. Do not write to a DVD while the notebook is running on battery power.
 - Before writing to a DVD, close all open applications (including screen savers and antivirus software) except InterVideo WinDVD Creator.
 - Do not copy directly from a DVD to another DVD or from a network drive to a DVD. Instead, copy from a DVD or network drive to your hard drive, and then copy from your hard drive to the DVD.
 - Do not type on the notebook keyboard or move the notebook while the notebook is writing to a DVD. The write process is sensitive to vibration.
-

Choosing Recording Media

HP recommends using high-quality media that correspond to the maximum speed of the optical drive. The notebook can write or copy to DVDs that provide one-time, non-erasable recording (DVD+R) or to DVDs that provide erasable recording (DVD+RW).



In order to write data to a DVD, you must use a blank DVD+R disc or a DVD+RW disc on which the format has not been finalized.

Creating DVDs and Video CDs

To open InterVideo WinDVD Creator:

» Select Start > All Programs > InterVideo > WinDVD Creator.

For instructions on creating DVDs and video CDs, select Help on the WinDVD Creator menu bar.

Sonic RecordNow!

Sonic RecordNow! can be used to create backups of data or audio CDs or DVDs, transfer audio files from CDs to a hard drive, and create personalized audio CDs. RecordNow! is preinstalled on your notebook. For more information about RecordNow! capabilities and instructions on creating data and audio CDs and DVDs, refer to the Sonic RecordNow! Tutorial and online Help.

Software Updates and Restorations

Updating Software

For optimal notebook performance and to make sure your notebook remains compatible with changing technologies, install the latest versions of the software provided with your notebook as they become available.

To update notebook software:

1. Prepare for any update by identifying your notebook type, series or family, and model.

Prepare for a ROM (read-only memory) update by identifying the ROM version currently installed on the notebook.

2. Access the updates at the HP Web site.
3. Download and install the updates.



The notebook ROM stores the BIOS (basic input-output system). The BIOS determines how the notebook hardware interacts with the operating system and external devices and also supports such notebook services as time and date.



If your notebook connects to a network, consult with your network administrator before installing any software updates, particularly a ROM update.

Accessing Notebook Product Information

To access the updates for your notebook, you will need the following information:

- The product *category* is Notebook.
- The product *family name* and *series number* are printed on the display bezel.
- The product name, product number, and serial number are provided on the Service Tag label on the bottom of unit.

The product name, notebook model, and notebook serial number are also displayed in the same section of the Setup utility that displays ROM information, as described in the next section.

Accessing Notebook ROM Information

To determine whether an available ROM update is a later ROM version than the ROM version currently installed on the notebook, you need to know the version of the currently installed ROM.

ROM information is displayed in the Setup utility. The Setup utility is a non-Windows utility that does not support the TouchPad.

1. Open the Setup utility by turning on or restarting the notebook.
2. Press **F10** while the “Press <F10> to enter setup” prompt is displayed in the lower left of the screen.

For navigation instructions, press **F1**.

3. To view general system information, select Main menu > System Information.
4. To view or enter identification values for system components, select Main menu > System IDs.

5. To confirm the information or your preferences, press **F10**.
6. To save your preferences and exit the Setup utility.
 - a. Press **esc** (or select Exit from the menu bar).
 - b. Select Exit Saving Changes.
 - c. Then follow the instructions on the screen.

Your preferences are set as you exit Setup and are in effect when the notebook restarts.

Downloading and Installing Software Updates

Most software at the HP Web site is packaged in a compressed file called a *SoftPaq*. Some ROM updates may be packaged in a compressed file called a *RomPaq*. Other ROM updates may be provided as a CPQFlash *SoftPaq*.

Most download packages contain a file named Readme.txt. A Readme.txt file contains detailed descriptive, installation, and troubleshooting information about the download. The Readme.txt files included with RomPaqs are English only.

The following sections provide instructions for downloading and installing the following:

- A ROM update
- A SoftPaq containing an update other than a ROM update

Downloading and Installing ROM Updates



CAUTION: To prevent serious damage to the notebook or an unsuccessful installation, download and install a ROM update only while the notebook is connected to reliable external power. (Do not download or install a ROM update while the notebook is docked or running on battery power.) During the download and installation:

- Do not unplug the notebook from the electrical outlet.
 - Do not shut down the notebook or initiate Standby or Hibernation.
 - Do not insert, remove, connect, or disconnect any device, cable, or cord.
-

Downloading ROM Update

To download a ROM update:

1. Access the page at the HP Web site that provides software for your notebook:
 - Select Start > Help and Support, and then select a software update link.

-or-

 - Visit the HP Web site at:
<http://www.hp.com/support>
2. Follow the instructions on the screen to identify your notebook and access the ROM update you want to download.
3. At the download area:
 - a. Record the date, name, or other identifier of any ROM update that is later than the ROM currently installed on your notebook. (You may need to identify the update later, after it has been downloaded to the hard drive.)
 - b. Record the path to the default or custom location on the hard drive to which the ROM package will download. (You may need to access the ROM package after it has been downloaded.)
 - c. Follow the online instructions to download your selection to the hard drive.

Installing ROM Update

ROM installation procedures vary. To install a ROM update, follow any instructions that are displayed on the screen after the download is complete. If no instructions are displayed:

1. Open Windows Explorer by selecting Start > All Programs > Accessories > Windows Explorer.
2. In the left pane of the Windows Explorer window:
 - a. Select My Computer and then your hard drive designation. (The hard drive designation is typically Local Disk C.)
 - b. Then follow the path you recorded earlier to the folder on your hard drive that contains the update.
3. To begin the installation, open the folder, and then select the file with an .exe extension—for example, Filename.exe. (The ROM update installation begins.)
4. To complete the installation, follow the instructions on the screen.



After a message on the screen reports a successful installation, you can delete the downloaded file from the destination folder.

Downloading and Installing Other Software

To update software other than a ROM update:

1. Access the page at the HP Web site that provides software for your notebook:
 - Select Start > Help and Support, and then select a software update link.

-or-

- Visit the HP Web site at:
<http://www.hp.com/support>
2. Follow the instructions on the screen to identify your notebook and access other software you want to download.
3. At the download area:
 - a. Write down the date, name, or other identifier of the software you plan to download. (You will need to identify the update later, after it has been downloaded to the hard drive.)
 - b. Follow the online instructions to download the software to the hard drive.
4. When the download is complete, open Windows Explorer by selecting Start > All Programs > Accessories > Windows Explorer.
5. In the left pane of the Windows Explorer window:
 - a. Select My Computer and then your hard drive designation. (The hard drive designation is typically Local Disk C.)
 - b. Then follow the path you recorded earlier to the folder on your hard drive that contains the update.
6. To begin the installation, open the folder, select the name or number of the software package you have downloaded.

7. Select the file that includes an .exe extension—for example, Filename.exe. (The installation begins.)
8. To complete the installation, follow the instructions on the screen.



After a message on the screen reports a successful installation, you can delete the downloaded file from the HP folder.

Recovery Procedures



CAUTION: To prevent loss of notebook functionality, perform the procedures described in this section only while the notebook is connected to reliable external power through the AC adapter. During a software restoration, repair, or reinstallation:

- Do not unplug the notebook from external power.
 - Do not shut down the notebook or initiate Standby or Hibernation.
 - Do not insert, remove, connect, or disconnect any device, cable, or cord.
-

Before You Begin



HP recommends that you try to restore your system by using the System Restore utility before you consider repairing or reinstalling your operating system.

Perform the following restore procedures in the order presented.

Step	Description	Refer to
1	Return the notebook to a system restore point.	The “Using the System Restore Utility” section
2	Try to solve or diagnose the problem by using the Help and Support Center.	Start > Help and Support > Fixing a problem
3	Review troubleshooting procedures.	The <i>Troubleshooting</i> guide on the <i>Documentation Library CD</i>
4	Reinstall all HP drivers.	The “Repairing or Reinstalling Drivers” section
5	If you suspect the problem could be caused by a preinstalled or preloaded application, try reinstalling the application.	The “Repairing or Reinstalling Applications” section
6	Repair the operating system.	The “Repairing the Operating System” section
7	Reinstall the operating system.	The “About Operating System Reinstallation” section

Using the System Restore Utility

The System Restore utility enables you to safeguard your system files and settings by using restore points, which are restorable, benchmark “snapshots” of your system.

The notebook sets restore points, called *system* restore points, at regular intervals and might set additional restore points whenever you change your personal settings or add software or hardware.

Setting additional restore points manually provides additional protection for your system files and settings. HP recommends that you manually set restore points:

- Before you add or extensively modify software or hardware.
- Periodically, whenever the system is performing optimally.

Setting a Restore Point

To set a system restore point manually:

1. Select Start > Help and Support > System Restore.
2. Select Create a restore point, and then follow the instructions on the screen.

Restoring to a Restore Point

To restore the notebook to a restore point:

1. Select Start > Help and Support > System Restore.
2. Select Restore my computer to an earlier time, and then follow the instructions on the screen.

Repairing or Reinstalling Drivers

All drivers required for notebook functionality can be reinstalled from the *Driver Recovery CD* included with your notebook. If you have not reinstalled your operating system, these drivers can also be reinstalled from your hard drive.

The driver reinstallation process repairs or replaces most corrupted drivers and reinstalls most deleted drivers.

- *To reinstall the drivers required for notebook functionality from your hard drive*—Select Start > All Programs > Software Setup, and then follow the instructions on the screen. (When you are prompted to select the drivers you want to reinstall, you can select or clear the check boxes for some or all of the listed drivers.)
- *To reinstall the drivers required for notebook functionality from the Driver Recovery CD*—While running Windows, insert the *Driver Recovery CD* into the optical drive, and then follow the instructions on the screen. (When you are prompted to select the drivers you want to reinstall, you can select or clear the check boxes for some or all of the listed drivers.)

If the CD does not open within several seconds, select Start > Run. Type D:\SWSETUP\APPINSTL\SETUP.EXE (where D indicates the optical drive) into the Open text field, and then select OK.

Repairing or Reinstalling Applications

All applications preinstalled or preloaded on your notebook can be repaired or reinstalled by using the *Driver Recovery CD*.



If you have not reinstalled your operating system, some applications preloaded on your notebook, such as those available in the Software Setup utility, can also be repaired or reinstalled from your hard drive.

The application reinstallation process repairs or replaces corrupted system files within the application and reinstalls deleted system files within the application.

- In most cases: If the application you are repairing or reinstalling is still installed on your notebook, the reinstallation process does not affect your settings within the application.
- In all cases: If an application has been deleted from your notebook, the reinstallation process reinstalls the application or utility to the factory image.

Reinstalling Applications from Your Hard Drive

To reinstall a preloaded application or utility from your hard drive:

- » Select Start > All Programs > Software Setup, and then follow the instructions on the screen. (When you are prompted to select the software you want to reinstall, select or clear the appropriate check boxes.)

Reinstalling Applications from the Driver Recovery CD

To reinstall a preloaded or preinstalled application from the *Driver Recovery CD* :

- » While running Windows, insert the CD into the optical drive, and then follow the instructions on the screen. (When you are prompted to select the applications you want to reinstall, select or clear the appropriate check boxes.)

If the CD does not open within several seconds, select Start > Run. Type D:\SWSETUP\APPINSTL\SETUP.EXE (where D indicates the optical drive) into the Open text field, and then select OK.

Repairing or Reinstalling the Operating System

The *Operating System Recovery CD* included with your notebook can be used to repair or to reinstall the operating system. Both operations might take a few hours to complete.

- *Repairing* the operating system preserves your data and settings.
- *Reinstalling* the operating system deletes all files on the notebook. After the operating system has been reinstalled, all drivers required for notebook functionality must be reinstalled. To fully restore your system, you will also need to reinstall all other software that is not a part of the operating system.

Repairing the Operating System

To repair the operating system without deleting your personal data:

1. Insert the *Operating System Recovery CD* (included with the notebook) into the optical drive.
2. Turn off the notebook using the standard Windows shutdown procedure. If the notebook is unresponsive:
 - a. If the notebook is running Windows XP Professional, press **ctrl+alt+del**. Select Shut down from the drop-down list, and then select OK.
 - b. If the notebook is running Windows XP Home or does not respond to **ctrl+alt+del**, press and hold the power button for 5 seconds.
3. Turn on the notebook by briefly pressing the power button.

If the *Operating System Recovery CD* does not open after several minutes, the boot order settings on your notebook might have been changed from the default settings. For information about changing boot order settings, refer to the Boot Menu in the [“Configuring Your Notebook”](#) section in this chapter.

4. When prompted, press any key to boot from CD. (After a few minutes, the Welcome to Setup screen is displayed.)
5. Press **enter** to continue. (A Licensing Agreement screen is displayed.)
6. Press **F8** to accept the agreement and continue. (The Setup window is displayed.)
7. Press **R** to repair the selected Windows installation. (The repair process begins.)

After the repair process is complete, which might take a few hours, the notebook restarts in Windows.

About Operating System Reinstallation

If you could not solve the problem by repairing the operating system as described in the previous section, it might be necessary to reinstall the operating system.

Backing Up Your Data



CAUTION: Personal data and any software you have installed on the notebook will be lost during the operating system reinstallation procedure described in this section. To protect your data, back up your data before beginning the procedure.

To back up your data you can do any of the following:

- Purchase optional system backup software.
- Copy individual data files to storage devices other than your hard drive.
- Use the system backup utility available in Windows XP Professional:

Select Start > All Programs > Accessories > System Tools > Backup.

If you plan to select the items you want to back up, rather than backing up your entire system, the following suggestions might be helpful:

- On many notebooks, data files are stored by default in the My Documents folder. If you created data files in other locations, be sure to check all the possible locations.
- Templates are often stored in the folders of their associated applications. For example, a Microsoft Word template that you created might be stored at C:\Program Files\Microsoft Office\Templates.

- The shortcuts on a desktop are often stored in C:\ Documents and Settings\ (Your User Account)\ Desktop.
- If you have customized the settings in a window, toolbar, or menu bar, you might want to take a screen shot of that element. The screen shot could be a time-saving reference when you begin resetting your preferences. A screen shot is a copy of an element on the screen. To copy the element from the screen and paste it into a Word document:
 - a. Display the element on the screen.
 - b. Copy the element or entire screen:
 - ◆ To copy only the active window, press **alt+prt sc**.
 - ◆ To copy the entire screen, press **prt sc**.
 - c. To paste the copied image into a document, open Word, and then select Edit > Paste.

Reinstalling the Operating System



During the reinstallation, you might be prompted for your Product Key. Your Product Key is provided on the Microsoft Certificate of Authenticity label affixed to the bottom of the notebook.

To reinstall the operating system using the *Operating System Recovery CD* included with the notebook:

1. Insert the *Operating System Recovery CD* into the optical drive.
2. Turn off the notebook by using the standard Windows shutdown procedure. If the notebook is unresponsive:
 - a. If the notebook is running Windows XP Professional, press **ctrl+alt+del**. Select Shut down from the drop-down list, and then select OK.
 - b. If the notebook is running Windows XP Home or does not respond to **ctrl+alt+del**, press and hold the power button for 5 seconds.

3. Turn on the notebook by briefly pressing the power button.

If the *Operating System Recovery CD* does not open after several minutes, the boot order settings on your notebook might have been changed from the default settings. For information about changing boot order settings, refer to the Boot Menu in the “[Configuring Your Notebook](#)” section in this chapter.

4. When prompted, press any key to boot from CD. (After a few minutes, the Welcome to Setup screen is displayed.)
5. Press **enter** to continue. (A Licensing Agreement screen is displayed.)
6. Press **F8** to accept the agreement and continue. (The Setup window is displayed.)
7. Press **esc** to continue installing a fresh copy of the operating system.
8. Press **enter** to set up the operating system.
9. Press **C** to continue setup using this partition.
10. Select Format the partition using the NTFS file system (Quick), and then press **enter**. (A caution is displayed. The caution explains that formatting this drive will delete all current files.)
11. Press **F** to format the drive. (The reinstallation process begins.)

After the reinstallation process is complete, which might take a few hours, the notebook restarts in Windows. To properly set up Windows, follow the on-screen instructions.



After you reinstall the operating system, you must reinstall the drivers required for notebook functionality. You might need to reinstall drivers for some external devices.



After you have finished reinstalling drivers, you should reinstall preloaded, preinstalled, and optional software.

Reinstalling Other Software

After you have reinstalled drivers, you can begin to reinstall other software. To reinstall optional software, refer to the installation instructions included with the software. Installation instructions are usually provided on the software CD, in the CD package, or at the Web site of the software provider or manufacturer.

For more information about reinstalling a specific multimedia application that was included with your notebook, such as Sonic RecordNow!, InterVideo WinDVD, or InterVideo WinDVD Creator, refer to the “[Multimedia](#)” chapter in the *Software Guide*.

Updating Reinstalled Software

HP strongly recommends that you update all reinstalled software. Depending on the settings you used on your former configuration, some software might have been automatically updated without your knowledge. Use the following update procedures as soon as your notebook is connected to the Internet.

- To update your operating system, select Start > Help and Support > Windows Update, and then follow the instructions on the screen.
- For information about updating the drivers on a device connected to the notebook, select Start > Help and Support. Type update device driver in the Search text field, and then press the **enter** key.
- To update optional software, follow the instructions included with the software. Many applications include an update feature that you can access from a Help button or menu item within the application.

Installing a Retail Version of an Operating System

The Windows operating system provided on the notebook or on the *Operating System Recovery CD* is enhanced by HP. The HP enhancements add power and security features and provide supplementary support for external devices such as drives and PC Cards.



CAUTION: Replacing an operating system enhanced by HP with a retail version of an operating system will result in the loss of all HP enhancements. In some cases, the loss of these enhancements might result in an unresponsive system or the loss of complete USB support.

Configuring Your Notebook

The BIOS (basic input and output system) Setup utility, which is also referred to as the Setup utility, helps you configure your notebook operation. The utility is a preinstalled, ROM-based information and customization utility that can be used even when your operating system is not working or will not load.

Opening the Setup Utility

The Setup utility reports information about the notebook and provides settings for startup, password, port, Setup utility appearance, and other preferences. To access most settings:

1. Start up or restart the notebook.
2. Before Windows opens and while the “Press <F10> to enter setup” prompt is displayed in the lower left corner of the screen, press **F10**.

On some models, you must start up (not restart) the notebook to access the settings for a hard drive password.

Navigating and Selecting in the Setup Utility

Because the Setup utility is not Windows-based, it does not support the TouchPad. Navigation and selection are by keystroke.

- To navigate, use the up and down arrow keys or **tab**.
- To select an item, use the arrow keys to select the item, and then press **enter**.
- To close a display but remain in the Setup utility, press **esc**.

An on-screen guide to navigation and selection is displayed at the lower edge of most Setup utility submenu screens. To minimize keystrokes by using the **alt** Key Activates Accelerators feature:

1. Press and hold **alt**. (A letter or number in most on-screen items is highlighted.)
2. Press the keyboard key corresponding to the highlighted letter or number in the item you want to select.

For example, to select an on-screen OK button, press **alt**. When the “O” in OK is highlighted, press **O**.

The following tables describe BIOS settings for the BIOS version at publication. If your BIOS is a different version, some settings may differ from those shown.

Main Menu

Setting	Description	Default
BIOS Revision	Shows the current BIOS version.	Detected automatically
System Time	Sets the time using 24-hour format. Values set take effect immediately.	Detected automatically
System Date	Sets the date using dd/mm/yy format (except English, which uses mm/dd/yy format).	Detected automatically
System Memory	Shows the extended memory size.	Detected automatically
Serial Number	Displays the serial number as shown on the bottom of unit.	Detected automatically
Service ID	Displays an identifier used for repair service.	Detected automatically

Security Menu

Setting	Description	Default
Power-On Password	Shows when a power-on password is set.	Clear
Administrator Password	Shows when an administrator password is set.	Clear

Boot Menu

Setting	Description	Default
1. Floppy Diskette Devices	Shows the order of boot devices. Move the entries to change the order. If the notebook has more than one device in a + category, you can select the one scanned. Built-in LAN provides diskless boot from a network server.	1. Floppy Diskette Drives
2. CD-ROM		2. CD-ROM
3. +Hard Drive		3. +Hard Drive
4. Network Adapter		4. Network Adapter

Exit Menu

Setting	Description	Default
Exit Saving Changes	Saves Setup changes, then exits and reboots.	Clear
Exit Discarding Changes	Discards any Setup changes made since last save, then exits and reboots. Does not affect password, date, or time changes.	Clear
Load Setup Defaults	Restores default settings, and remains in Setup. Does not affect password, date, or time changes.	Clear

Restoring Setup Utility Default Settings

To return all Setup utility settings to default values, select Exit menu > Load Setup Defaults. (Identification information, including ROM version information, is retained.)

Exiting the Setup Utility

The Setup utility exit options are on the Exit menu. After you select an option, the Setup utility closes and Windows opens.

- To close the utility and save your changes from the current session, select Exit Saving Changes.
- To close the utility without saving changes from the current session, select Exit Discarding Changes.

Using the Help and Support Center

To access the online Help and Support Center:

1. Press the **Fn+F1** hotkey or select Start > Help and Support.
2. Follow the on-screen directions to select the online Help and Support Center feature that you need.

The Help and Support Center provides a comprehensive online resource tool for contacting an HP support specialist, for downloading the latest software driver updates and product information, and for learning more about using and maintaining your notebook.

In the Help and Support Center, you can:

- Learn how to use the software tools for working with your favorite music, video, games, and photos (select models).
- Get basic and detailed information about Windows XP for customizing your notebook.
- Set up your notebook for networking and for communicating on the Web.

- Use administration tools to manage areas such as passwords, file backups, system restore, and user accounts.
- Learn how to print, fax, run performance and maintenance tools, and install and configure new hardware.
- Troubleshoot and fix common notebook problems.
- Protect your notebook files by using security and privacy features such as Norton AntiVirus software.
- Undo changes to your notebook with System Restore.
- Improve performance of your hard drive and battery pack.
- Contact an HP support specialist or use Remote Assistance to get additional help.
- Download the latest drivers, utilities, software updates, and product documentation for your notebook.
- Use tools and resources to manage and support your Windows operating system.
- Find compatible hardware and software.

Using Support Telephone Numbers

Obtaining Support Telephone Numbers

If you cannot solve a notebook problem by using the online Help and Support Center installed on your notebook or the documentation included with the notebook, you may need to contact HP. To obtain a list of worldwide customer support telephone numbers or to locate the HP office near you, use one of the following methods:

- Select Start > Help and Support.
- Refer to the *Worldwide Telephone Numbers* booklet (English only) included with your notebook to contact an HP Customer Care Center.
- Visit the HP Web site at:
<http://www.hp.com/support>

Preparing to Call Technical Support

To provide the fastest possible resolution of your problem, have the notebook and the following information available when you call:

- Product name, serial number, and product number are provided on Service Tag label affixed to the bottom of the notebook.
- Purchase date on the invoice.
- Conditions under which the problem occurred.
- Error messages that have been displayed.
- Operating system version number and registration number.

To display the operating system version number and registration number, select Start > Control Panel > Performance and Maintenance > System > General.

- Brand and model of an optional printer.

Index

A

- AC power
 - devices that supply 1-1
 - using Hibernation with 1-9
 - using Standby with 1-10
- Administrator password
 - changing 2-8, 2-9, 2-10
 - deleting 2-8, 2-9, 2-10
 - entering 2-11
 - features 2-8
 - setting 2-8, 2-9, 2-10
- applications. *See* software;
software updates
- audio CDs, playing 3-6

B

- backup
 - procedures 4-15
 - System Restore 4-10
 - when to do 4-15
- battery pack
 - causing CD or DVD write
corruption 3-9
 - when to remove 1-3
- battery power vs. AC power 4-8
- BIOS (basic input output system)
4-1
- boot order 4-14

C

- CDs
 - CD-R vs. CD-RW 3-9
 - Driver Recovery* 4-11, 4-12
 - Operating System Recovery*
4-16
 - playing audio and video CDs
3-6
 - playing, with WinDVD 3-7
- customer support 4-25

D

- device security 2-11
- display switch
 - default settings 1-8
- display, internal
 - brightness 2-4
- Driver Recovery CD* 4-16
- drivers
 - in retail operating systems 4-19
 - obtaining 4-11
 - reinstalling 4-17
- DVDs
 - creating with WinDVD Creator
3-8
 - DVD-R vs. DVD-RW 3-9
 - playing, with WinDVD 3-7
 - region settings for 3-7

E

emergency shutdown steps 1–10
End User License Agreement,
operating system repair 4–14

F

Fn key, in hotkeys 3–2
function keys 3–2

H

Hibernation
changing configuration during
1–2
default settings 1–9
defined 1–2
initiating 1–9
interfering
with drive media 3–1
with infrared or drive media
1–5
setting preferences 1–11
when to use 1–2
hotkeys
identifying 3–2
QuickLock 2–4

I

icons
displaying power icon 1–11
finding hidden 1–11
InterVideo WinDVD. *See*
WinDVD Creator

K

keys
Fn 3–2
hotkeys 3–2
prt sc 4–16

L

lock, security cable (optional)
2–15
locked system, emergency
shutdown steps 1–10

M

model, identifying notebook 4–2
multimedia 3–1

N

notebook model, product
information 4–2

O

operating system
installing retail version of 4–19
reinstalling 4–15
repairing 4–13

P

passwords 4–19
combining 2–3
DriveLock 2–3
forgotten 2–3
power-on 2–4, 2–5
Windows 2–4
playback tips 3–6
power button
default settings 1–8
identifying 1–6
power conservation
using Hibernation 1–2
using Standby 1–2
power features
displaying Power Meter icon
1–11
emergency shutdown 1–10

- power schemes 1–12
- power-on passwords 1–12
- setting preferences 1–11
- shutting down notebook 1–8
- turning on notebook 1–8
- power settings, default 1–8
- power, AC vs battery 4–8
- power/Standby light 1–6
- power-on password
 - about 2–4
 - combining with other passwords 2–3
 - defined 2–5
 - setting, changing, deleting 2–5

Q

- Quick Launch buttons
 - assigning 3–5
 - identifying 3–3
- QuickLock 2–4

R

- region settings for DVDs 3–7
- reinstalling the operating system 4–13
- repairing the operating system 4–13
- resetting the notebook, emergency shutdown steps 1–10
- restore point 4–10
- ROM
 - defined 4–1
 - determining current version of 4–2
 - downloading and installing 4–4
 - obtaining updates 4–3
- RomPaq, downloading 4–3

S

- security cable lock 2–15
- security features 2–15
 - Administrator password 2–8
 - device security 2–11
 - if you forget passwords 2–3
 - power-on passwords 1–12, 2–3
 - quick reference 2–2
- serial number, notebook 4–2
- series, notebook 4–2
- settings, BIOS 4–21
- Setup
 - Administrator password 2–8, 2–9, 2–10
 - protecting with password 2–8
 - setting Administrator password preferences in 2–8
- Setup utility 4–19
- shutdown
 - default settings 1–8
 - emergency procedures 1–10
 - shutting down the notebook 2–14
- sleep. *See* Standby
- SoftPaq
 - described 4–3
 - downloading and installing 4–7
- software
 - backing up 4–10, 4–15
 - repairing, reinstalling 4–12
 - RomPaq 4–3
 - Setup utility 4–19
 - SoftPaq 4–3
 - updating software 4–1
 - Windows Media Player 3–6
 - WinDVD 3–6
 - WinDVD Creator 3–8

Software Setup

reinstalling applications 4–12

reinstalling drivers 4–11

software updates

downloading and installing

4–4, 4–7

obtaining 4–3

preparing for 4–1

Standby

default settings 1–10

defined 1–2

interfering

with infrared or drive media

1–5, 3–1

setting preferences 1–11

when to use 1–2

system information, using 2–12

System Restore 4–10

T

technical support 2–3, 4–25

telephone numbers, service and

support 4–25

troubleshooting, System Restore

4–10

U

unresponsive system, emergency

shutdown steps 1–10

V

video CDs (VCDs)

caution with media hotkeys

3–2, 3–6

playing, with WinDVD 3–7

W

Windows Media Player 3–6

Windows passwords 2–3

WinDVD Creator

creating DVDs 3–8

error message 3–7

preparing to use 3–9

tips for using 3–6

Free Manuals Download Website

<http://myh66.com>

<http://usermanuals.us>

<http://www.somanuals.com>

<http://www.4manuals.cc>

<http://www.manual-lib.com>

<http://www.404manual.com>

<http://www.luxmanual.com>

<http://aubethermostatmanual.com>

Golf course search by state

<http://golfingnear.com>

Email search by domain

<http://emailbydomain.com>

Auto manuals search

<http://auto.somanuals.com>

TV manuals search

<http://tv.somanuals.com>