

TECHNICAL MANUAL

ORGANIZATIONAL, DIRECT SUPPORT,
AND GENERAL SUPPORT MAINTENANCE
REPAIR PARTS AND SPECIAL TOOLS LIST

FOR

DISTORTION ANALYZERS AN/ URM-180

(HEWLETT-PACKARD MODEL 333A)

NSN 6625-00-089-4227

AND

AN/ URM-184A

(HEWLETT-PACKARD MODEL 334A)

NSN 6625-00-802-8718

HEADQUARTERS, DEPARTMENT OF THE ARMY

September 1976

TECHNICAL MANUAL
No. 11-6625-1576-24P

T M 11-6625-1576-24P

HEADQUARTERS,
DEPARTMENT OF THE ARMY
WASHINGTON, DC, 27 September 1976

ORGANIZATIONAL, DIRECT SUPPORT, AND GENERAL SUPPORT MAINTENANCE

REPAIR PARTS AND SPECIAL TOOLS LIST

FOR

DISTORTION ANALYZERS AN/URM-180

(HEWLETT-PACKARD MODEL 333A)

NSN 6625-00-089-4227

AND

AN/URM-184A (HEWLETT-PACKARD MODEL 334A)

NSN 6625-00-802-8718

Current as of 12 July 1976

REPORTING OF ERRORS

You can improve this manual by recommending improvements using DA Form 2028-2 (Test) located in the back of the manual. Simply tear out the self addressed form, fill it out as shown on the sample, fold it where shown, and drop it in the mail.

If there are no blank DA Form 2028-2 (Test) in the back of your manual, use the standard DA Form 2028 (Recommended Changes to Publications and Blank Forms) and forward to the Commander, US Army Electronics Command, ATTN: DRSEL-MA-Q, Fort Monmouth, New Jersey 07703.

In either case a reply will be furnished direct to you.

Table of Contents

| | | Page | Illus Figure |
|-----------|---|------|-----------------|
| SECTION | I. Introduction | 1 | |
| | II. Repair part list | 5 | |
| G R O U P | 00 Indicator Distortion AN/URM-180 | 4 | 1 |
| | Indicator distortion, top and bottom | 6 | 2 |
| | Mechanical parts and A4 PC board | 10 | 3 |
| | 01 Impedance converter | 14 | 4 |
| | 02 Rejection amplifier | 18 | 5 |
| | 03 Metering circuit | 22 | 6 |
| | 04 Power supply | 26 | 7 |
| SECTION | III. Special tools list (Not applicable) | | |
| | IV. National stock number and part number index | 28 | |

SECTION I

INTRODUCTION

1. Scope.

This manual lists repair parts required for performance of organizational and general support maintenance of the AN/URM-180 and the AN/URM-184A.

2. General.

This Repair Parts and Special Tools List is divided into the following sections:

a. Section II. Repair Parts List. A list of repair parts authorized for use in the performance of maintenance. The list also includes parts which must be removed for replacement of the authorized parts. Parts lists are composed of functional groups in ascending numerical sequence, with the parts in each group listed in figure and item number sequence.

b. Section III. Special Tools List. Not applicable.

c. Section IV. National Stock Number and Part Number Index. A list, in ascending numerical sequence, of all National stock numbers appearing in the listings, followed by a list, in alphanumeric sequence, of all part numbers appearing in the listings. National stock numbers and part numbers are cross-referenced to each illustration figure and item number appearance.

3. Explanation of Columns.

The following provides an explanation of columns found in the tabular listings:

a. Illustration. This column is divided as follows:

(1) *Figure number.* Indicates the figure number of the illustration in which the item is shown.

(2) *Item number.* The number used to identify each item called out in the illustration.

b. Source, Maintenance, and Recoverability Codes (SMR).

(1) *Source code.* Source codes are assigned to support items to indicate the manner of acquiring support items for maintenance, repair, or overhaul of end items. Source codes are entered in the first and second positions of the uniform SMR Code format as follows:

| Code | Definition |
|------|---|
| PA | Item procured and stocked for anticipated or known usage. |
| XD | A support item that is not stocked. When |

| Code | Definition |
|------|---|
| | required, item will be procured through normal supply channels. |
| AH | Item to be assembled at general support maintenance level. |

NOTE

Cannibalization or salvage may be used as a source of supply for any items source-coded above, except those coded XA, XD, and aircraft support items as restricted by AR 700-42.

(2) *Maintenance code.* Maintenance codes are assigned to indicate the levels of maintenance authorized to USE and REPAIR support items. The maintenance codes are entered in the third and fourth positions of the Uniform SMR Code format as follows:

(a) The maintenance code entered in the third position will indicate the lowest maintenance level authorized to remove, replace, and use the support item. The maintenance code entered in the third position will indicate one of the following levels of maintenance:

| Code | Application/Explanation |
|------|---|
| O | Support item is removed, replaced, used at the organizational level. |
| H | Support item is removed, replaced, used at the general support level. |

(b) The maintenance code entered in the fourth position indicates whether the item is to be repaired and identifies the lowest maintenance level with the capability to perform complete repair (i.e., all authorized maintenance functions). This position will contain one of the following maintenance codes:

| Code | Application/Explanation |
|------|---|
| H | The lowest maintenance level capable of complete repair of the support item is the general support level. |
| Z | Nonreparable. No repair is authorized. |

(3) *Recoverability code.* Recoverability codes are assigned to support items to indicate the disposition action on unserviceable items. The recoverability code is entered in the fifth position of the Uniform SMR Code format as follows:

| Recoverability Code | Definition |
|---------------------|--|
| Z | Nonreparable item. When unserviceable, condemn and dispose at the level indicated in position 3. |

Recoverability
code

Definition

H - Repairable item. When uneconomically repairable, condemn and dispose at the general support level.

c. *National Stock Number.* Indicates the National stock number assigned to the item and will be used for requisitioning purposes.

d. *Part Number.* Indicates the primary number used by the manufacturer (individual, company, firm, corporation, or Government activity), which controls the design and characteristics of the item by means of its engineering drawings, specifications standards, and inspection requirements, to identify an item or range of items.

NOTE

When a stock-numbered item is requisitioned, the repair part received may have a different part number than the part being replaced.

e. *Federal Supply Code for Manufacturer (FSCM).* The FSCM is a 5-digit numeric code listed in SB 708-42 which is used to identify the manufacturer, distributor, or Government agency, etc.

f. *Description.* Indicates the Federal item name and, if required, a minimum description to identify the item. When the part to be used differs between serial numbers of the same model, the effective serial numbers are shown as the last line of the description.

g. *Unit of Measure (U/M).* Indicates the standard of the basic quantity of the listed item as used in performing the actual maintenance function. This measure is expressed by a two-character alphabetical abbreviation (e.g., ea. in, pr, etc.). When the unit of measure differs from the unit of issue, the lowest unit of issue that will satisfy the required units of measure will be requisitioned.

h. *Quantity Incorporated in Unit.* Indicates the quantity of the item used in the breakout shown on the illustration figure, which is prepared for a functional group subfunctional group, or an assembly.

4. Special Information.

a. Usable on codes are shown in the description column. Uncoded items are applicable to all models. Identification of the usable on codes used in this publication are:

| Code | Used on |
|------|-------------------------|
| CZN | AN/URM-180 Model 333A |
| CZP | AN/URM-180 Model 333A01 |
| CZQ | AN/URM-184 Model 334A |
| CZR | AN/URM-184 Model 334A01 |

b. The following publication pertains to the AN/URM-180 and its components: TM 11-6625-1576-15 Distortion Analyzer HP 333A and 334A.

5. How to Locate Repair Parts.

a. When National stock number or part number is unknown:

(1) *First.* Using the table of contents, determine the functional group within which the repair part belongs. This is necessary since illustrations are prepared for functional groups, and listings are divided into the same groups.

(2) *Second.* Find the illustration covering the functional group to which the repair part belongs.

(3) *Third.* Identify the repair part on the illustration and note the illustration figure and item number of the repair part.

(4) *Fourth.* Using the Repair Parts Listing, find the figure and item number noted on the illustration.

b. When National stock number or part number is known:

(1) *First.* Using the Index of National Stock Numbers and Part Numbers, find the pertinent National stock number or part number. This index is in ascending NSN sequence, followed by a list of part numbers in ascending alphanumeric sequence, cross-referenced to the illustration figure number and item number.

(2) *Second.* After finding the figure and item number, locate the figure and item number in the repair parts list.

6. Abbreviations.

(Not applicable)

(Next printed page is 4.)

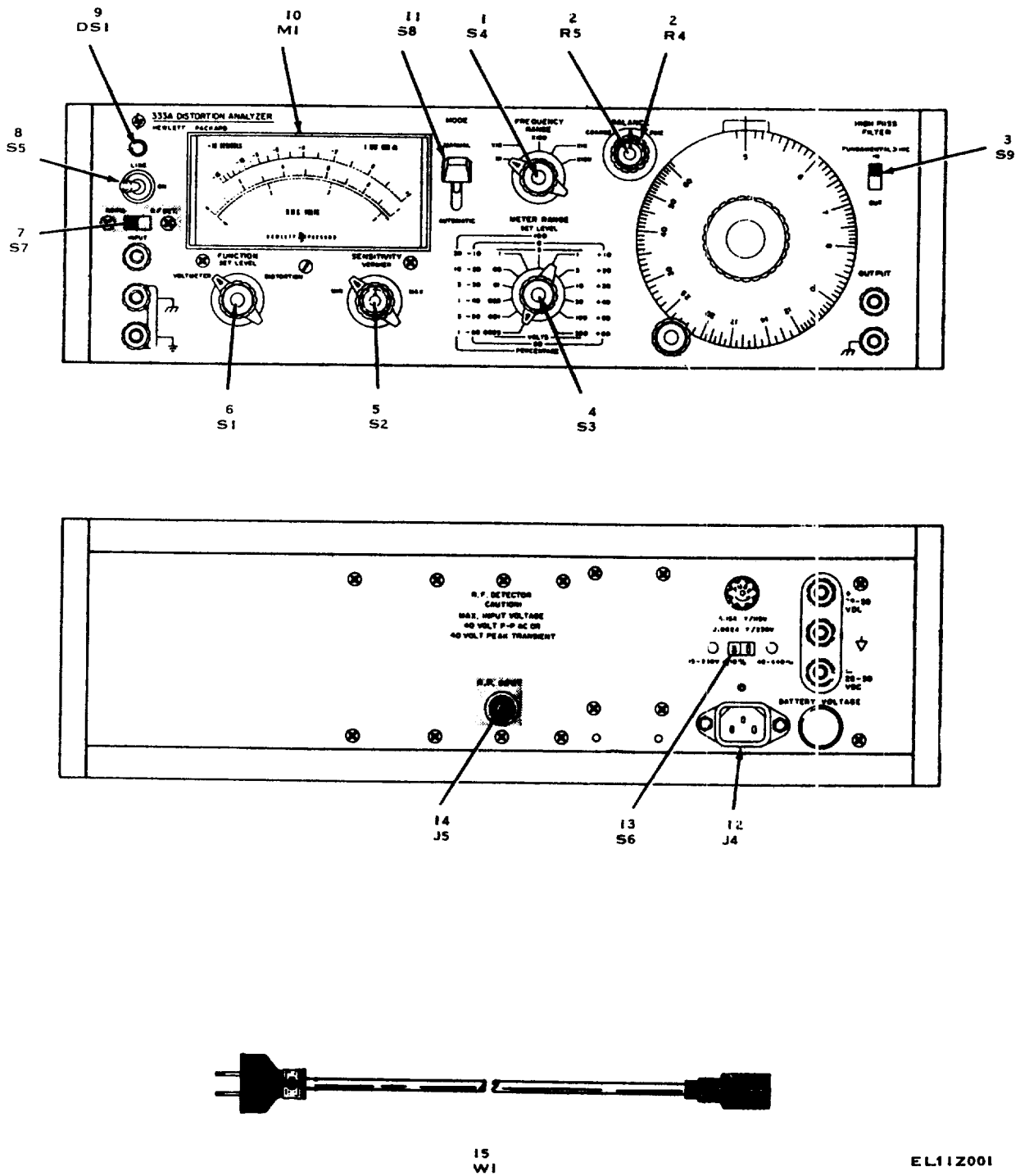
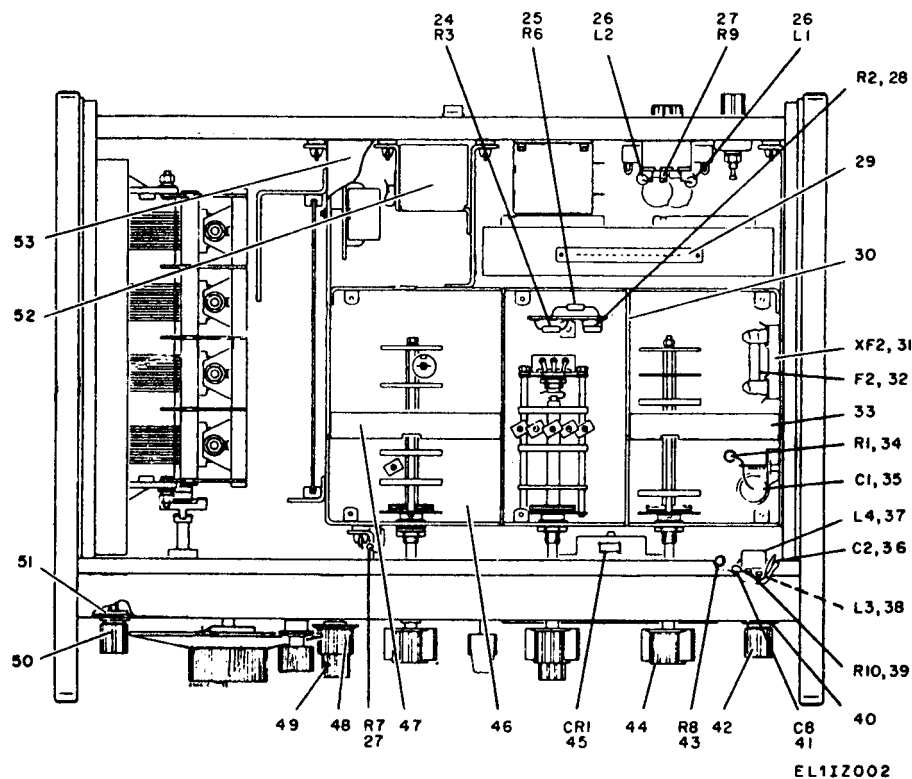
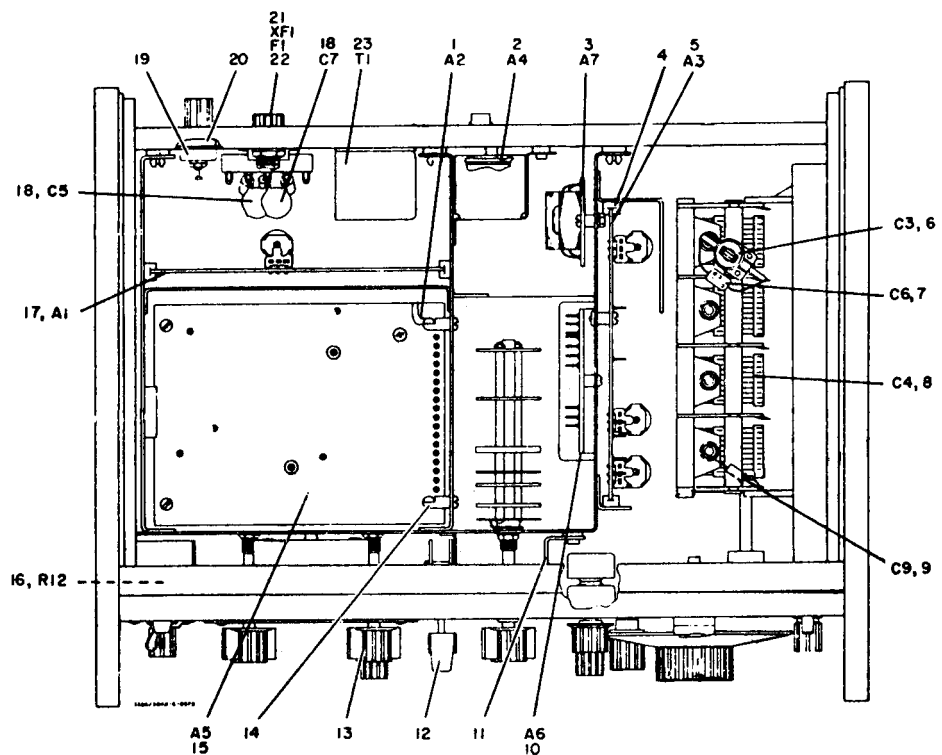


Figure 1. Indicator Distortion AN/URM-180.

| SECTION II. | | REPAIR PARTS LIST | | | | TM11-6625-1576-24P | | | | | |
|--|------|------------------------|-------------|-------|---|--------------------|------|------|------|--|--|
| (1) | (2) | (3) | (4) | (5) | (6) | (7) | (8) | | | | |
| ILLUSTRATION | SMR | NATIONAL | PART | FSCM | DESCRIPTION | USABLE ON | UNIT | QTY | INC | | |
| (A) | (B) | STOCK | NUMBER | | | CODE | OF | IN | IN | | |
| FIG | ITEM | NUMBER | | | | | MEAS | UNIT | UNIT | | |
| NO. | NO. | | | | | | | | | | |
| GROUP 00: INDICATOR, DISTORTION AN/URM-180 | | | | | | | | | | | |
| 1 | 1 | PAHZZ 6625-00-724-1675 | 00333-61901 | 28480 | SWITCH, ROTARY | | EA | 1 | | | |
| 1 | 2 | PAHZZ 5905-00-078-7402 | 2100-1736 | 28480 | RESISTOR, VARIABLE, WIREWOUND, 2 SECTION | | EA | 1 | | | |
| 1 | 3 | PAHZZ 5930-00-539-7661 | SS50 | 78488 | SWITCH, SLIDE DPDT | CZQ | EA | 1 | | | |
| 1 | 3 | XDHZZ | 3101-0889 | 28480 | SWITCH, SLIDE DPDT 333A SN980-01886 AND ABOVE 334A SN974-02766 AND ABOVE | | EA | 1 | | | |
| 1 | 4 | PAHZZ 6625-00-724-1677 | 00333-61903 | 28480 | SWITCH, ASSEMBLY, ROTARY W/COMPONENTS | | EA | 1 | | | |
| 1 | 5 | PAHZZ 6625-00-724-1672 | 00333-61902 | 28480 | SWITCH, ASSEMBLY, ROTARY W/COMPONENTS | | EA | 1 | | | |
| 1 | 6 | PAHZZ 5930-00-064-3185 | 3100-0878 | 28480 | SWITCH, ROTARY, 3 SECTION | | EA | 1 | | | |
| 1 | 7 | PAHZZ 4930-00-812-7105 | 4603 | 42190 | SWITCH, SLIDE | CZQ | EA | 1 | | | |
| 1 | 8 | PAHZZ 5930-00-058-9082 | 3101-0036 | 28480 | SWITCH, TOGGLE, SPST | | EA | 1 | | | |
| 1 | 9 | PAHZZ 6210-00-761-8898 | 599-124 | 72765 | LAMP INDICATOR, RED NEON LAMP | | EA | 1 | | | |
| 1 | 10 | PAHZZ 6625-00-802-8713 | 1120-0398 | 28480 | METER, AUDIO LEVEL | CZP,CZR | EA | 1 | | | |
| 1 | 10 | PAHZZ 6625-00-058-2595 | 1120-0352 | 28480 | METER | | EA | 1 | | | |
| 1 | 11 | PAHZZ 5930-00-907-2197 | 187 | 76854 | SWITCH, LEVER, 3 POSITION | | EA | 1 | | | |
| 1 | 12 | PAHZZ 5995-00-067-5039 | AC3 | 82389 | CONNECTOR, RECEPTACLE, ELECTRICAL | | EA | 1 | | | |
| 1 | 13 | PAHZZ 5930-00-406-8746 | 3101-1234 | 28480 | SWITCH, SLIDE 333A SN951-01701 AND ABOVE 334A SN948-02466 AND ABOVE | | EA | 1 | | | |
| 1 | 13 | PAHZZ 5930-00-977-1760 | 4633 | 42190 | SWITCH, SLIDE | | EA | 1 | | | |
| 1 | 14 | PAHZZ 5935-00-897-9351 | 1250-0118 | 28480 | CONNECTOR, RECEPTACLE, ELECTRICAL | CZQ | EA | 1 | | | |
| 1 | 15 | PAHZZ 5995-00-995-8822 | KH4147 | 70903 | CABLE ASSEMBLY, POWER | | EA | 1 | | | |



EL11Z002

Figure 2. Indicator distortion, top and bottom.

| SECTION II. REPAIR PARTS LIST (CONTINUED) | | | | | | TM11-6625-1576-24P | | | |
|---|------|----------|------------------|----------------|-------------|---|------|----|---|
| (1) | (2) | (3) | (4) | (5) | (6) | (7) | (8) | | |
| ILLUSTRATION | SMR | NATIONAL | PART | FSCM | DESCRIPTION | UNIT | QTY | | |
| (A) | (B) | STOCK | NUMBER | | | OF | INC | | |
| FIG | ITEM | NUMBER | | | | MEAS | IN | | |
| NO. | NO. | | | | | CODE | UNIT | | |
| 2 | 1 | PAHHH | 6625-00-727-4383 | 00333-66508 | 28480 | IMPEDANCE CONVERTER (A2) | CZP | EA | 1 |
| 2 | 1 | PAHHH | 6625-00-246-4422 | 00333-66502 | 28480 | IMPEDANCE CONVERTER (A2) | | EA | 1 |
| 2 | 2 | AHHHH | | 00332-66502 | 28480 | RADIO FREQUENCY DETECTOR (A4) | CZQ | EA | 1 |
| 2 | 3 | PAHHH | 6625-00-727-4381 | 00333-66507 | 28480 | FILTER, SUBASSEMBLY (A7) | | EA | 1 |
| 2 | 4 | XDZZ | | 5040-0601 | 28480 | GUIDE, CARD | | EA | 4 |
| 2 | 5 | PAHHH | 6625-00-400-5265 | 00333-66503 | 28480 | REJECTION AMPLIFIER (A3) | | EA | 1 |
| 2 | 6 | PAHZZ | 5910-00-578-5543 | 503-000B2P028R | 72982 | CAPACITOR, VARIABLE, CERAMIC, DIELECTRIC | | EA | 1 |
| 2 | 7 | PAHZZ | 5910-00-034-1831 | 0140-0021 | 28480 | CAPACITOR, FIXED, CERAMIC, DIELECTRIC | | EA | 1 |
| 2 | 8 | PAHZZ | 5910-00-866-5544 | 0121-0004 | 28480 | CAPACITOR, VARIABLE, AIR, DIELECTRIC | | EA | 1 |
| 2 | 9 | XDZZ | | 0150-0015 | 28480 | CAPACITOR, FIXED, 2.2 PF, FORM 10%, 500 VDC | | EA | 1 |
| 2 | 10 | AHHHH | 6625-00-253-3799 | 00333-66506 | 28480 | BRIDGE BALANCE SUBASSEMBLY (A6) | | EA | 1 |
| 2 | 11 | XDZZ | | 00331-01201 | 28480 | BRACKET ANGLE | | EA | 1 |
| 2 | 12 | XDOZZ | | 0370-0046 | 28480 | KNOB, L SW | | EA | 1 |
| 2 | 13 | PAOZZ | 5355-00-908-9402 | 0370-0113 | 28480 | KNOB, PHENOLIC | | EA | 1 |
| 2 | 14 | XDZZ | | 0380-0200 | 28480 | STANDOFF, HINGED | | EA | 2 |
| 2 | 15 | PAHZZ | 6625-00-727-4403 | 00333-66505 | 28480 | AUTOMATIC CONTROL SUBASSEMBLY (A5) | | EA | 1 |
| 2 | 16 | PAHZZ | 5905-00-104-8330 | RCR20G333JS | 81349 | RESISTOR, FIXED, COMPOSITION 33A SN910-01526 AND ABOVE 334A SN908-02166 AND ABOVE | | EA | 1 |
| 2 | 17 | PAHHH | 6625-00-077-2362 | 00333-66501 | 28480 | CIRCUIT CARD ASSEMBLY (A1) | | EA | 1 |
| 2 | 18 | XDZZ | | 0160-3333 | 28480 | CAPACITOR, FIXED, CERAMIC, DIELECTRIC | | EA | 2 |
| 2 | 19 | PAHZZ | 5970-00-914-3897 | 0340-0087 | 28480 | INSULATOR, BINDING POST, TRIPLE | | EA | 1 |
| 2 | 20 | PAHZZ | 5970-00-080-9780 | 0340-0091 | 28480 | INSULATOR, BINDING POST, TRIPLE | | EA | 1 |
| 2 | 21 | PAHZZ | 5920-00-881-4636 | 342014 | 75915 | FUSEHOLDER, MINAT, EXTRACTOR POST | | EA | 1 |
| 2 | 22 | PAOZZ | 5905-00-543-0006 | 2110-0017 | 28480 | FUSE, CARTRIDGE, 125 V | | EA | 1 |
| 2 | 22 | PAOZZ | 5920-00-229-1312 | F02GR062B | 81349 | FUSE, CARTRIDGE, 230 V | | EA | 1 |
| 2 | 23 | PAHZZ | 5950-00-477-7567 | 9100-1316 | 28480 | TRANSFORMER | | EA | 1 |
| 2 | 24 | PAHZZ | 5905-00-111-4742 | RCR20G391JS | 81349 | RESISTOR, FIXED, COMPOSITION | | EA | 1 |
| 2 | 25 | PAHZZ | 5905-00-141-0591 | RCR20G103JS | 81349 | RESISTOR, FIXED, COMPOSITION | | EA | 1 |
| 2 | 26 | PAHZZ | 5950-00-835-3027 | SA25001 | 95265 | COIL, RADIO FREQUENCY | | EA | 2 |
| 2 | 27 | PAHZZ | 5905-00-891-4202 | 0813-0029 | 28480 | RESISTOR, FIXED, WIREWOUND | | EA | 2 |
| 2 | 28 | PAHZZ | 5950-00-111-4734 | RCR20G470JS | 81349 | RESISTOR, FIXED, COMPOSITION | | EA | 1 |
| 2 | 29 | XDZZ | | 1251-0135 | 28480 | CONNECTOR, PRINTED CIRCUIT | | EA | 1 |
| 2 | 30 | XDZZ | | 00331-00601 | 28480 | SHIELD | | EA | 2 |
| 2 | 31 | PAHZZ | 5920-00-221-5673 | 357002 | 75915 | FUSEHOLDER, DP TYPE 3AG | | EA | 1 |
| 2 | 32 | PAFZZ | 5920-00-434-9726 | MS90078-19 | 96906 | FUSE, CARTRIDGE, SLOW BLOW | | EA | 1 |
| 2 | 33 | XDZZ | | 00331-00602 | 28480 | SHIELD, SWITCH | | EA | 1 |
| 2 | 34 | PAHZZ | 5905-00-722-0134 | 0767-0001 | 28480 | RESISTOR, FIXED, FILM | | EA | 1 |
| 2 | 35 | PAHZZ | 5910-00-728-4387 | 663UW33454W | 84411 | CAPACITOR, FIXED, PLASTIC, DIELECTRIC | | EA | 1 |
| 2 | 36 | PAHZZ | 5910-00-444-6641 | 0160-3327 | 28480 | CAPACITOR, FIXED, 1 UF, FORM 10% | | EA | 1 |
| 2 | 37 | PAHZZ | 5950-00-877-3465 | 9170-0805 | 28480 | COIL | | EA | 1 |
| 2 | 38 | PAHZZ | 5999-00-809-8580 | 9170-0016 | 28480 | INSULATOR, BEAD | | EA | 1 |
| 2 | 39 | PAHZZ | 5905-00-114-5366 | RCR20G132JS | 81349 | RESISTOR, FIXED, COMPOSITION | | EA | 1 |
| 2 | 40 | PAHZZ | 5970-00-837-0058 | 0340-0099 | 28480 | PLATE, INSULATOR | | EA | 1 |

| SECTION II. REPAIR PARTS LIST (CONTINUED) | | | | | | TM11-6625-1576-24P | |
|---|------|----------|------------------|-------------|-------------|--------------------------------------|------|
| (1) | (2) | (3) | (4) | (5) | (6) | (7) | (8) |
| ILLUSTRATION | SMR | NATIONAL | PART | FSCM | DESCRIPTION | UNIT | QTY |
| (A) | (B) | CODE | STOCK | | | OF | INC |
| FIG | ITEM | | NUMBER | | | MEAS | IN |
| NO. | NO. | | | | | USABLE ON CODE | UNIT |
| 2 | 41 | PAHZZ | 5910-00-928-5344 | 0140-0206 | 28480 | CAPACITOR, FIXED, MICA DIELECTRIC | EA 1 |
| 2 | 42 | XDHZZ | | 5060-4916 | 28480 | POST, BINDING ASSEMBLY | EA 3 |
| 2 | 42 | PAHZZ | 5940-00-926-9822 | 1510-0010 | 28480 | POST, BINDING, RED | EA 4 |
| 2 | 43 | PAHZZ | 5905-00-111-1679 | RCR2-G512JS | 81349 | RESISTOR, FIXED, COMPOSITION | EA 1 |
| 2 | 44 | PAOZZ | 5355-00-919-9953 | 0370-0112 | 28480 | KNOB, PHENOLIC | EA 3 |
| 2 | 45 | PAHZZ | 5961-00-978-7468 | 1901-0025 | 28480 | SEMICONDUCTOR DEVICE, DIODE, SILICON | EA 1 |
| 2 | 46 | XDHZZ | | 00331-0101 | 28480 | DECK ASSEMBLY, CENTER | EA 1 |
| 2 | 47 | XDHZZ | | 00331-00603 | 28480 | GUARD, SWITCH | EA 1 |
| 2 | 48 | PAOZZ | 5355-00-061-8597 | 9370-0117 | 28480 | KNOB, PLASTIC | EA 1 |
| 2 | 49 | PAOZZ | 5355-00-908-9418 | 0370-0114 | 28480 | KNOB, RED, BAKELITE | EA 2 |
| 2 | 50 | XDHZZ | | 1510-0011 | 28480 | POST, BINDING, BLACK | EA 5 |
| 2 | 51 | PAHZZ | 5970-00-837-0062 | 0340-0100 | 28480 | INSULATOR, BINDING POST | EA 3 |
| 2 | 52 | XDHZZ | | 00332-00602 | 28480 | SHIELD, RADIO FREQUENCY DETECTOR | EA 1 |
| 2 | 53 | XDHZZ | | 00331-04102 | 28480 | COVER | EA 1 |

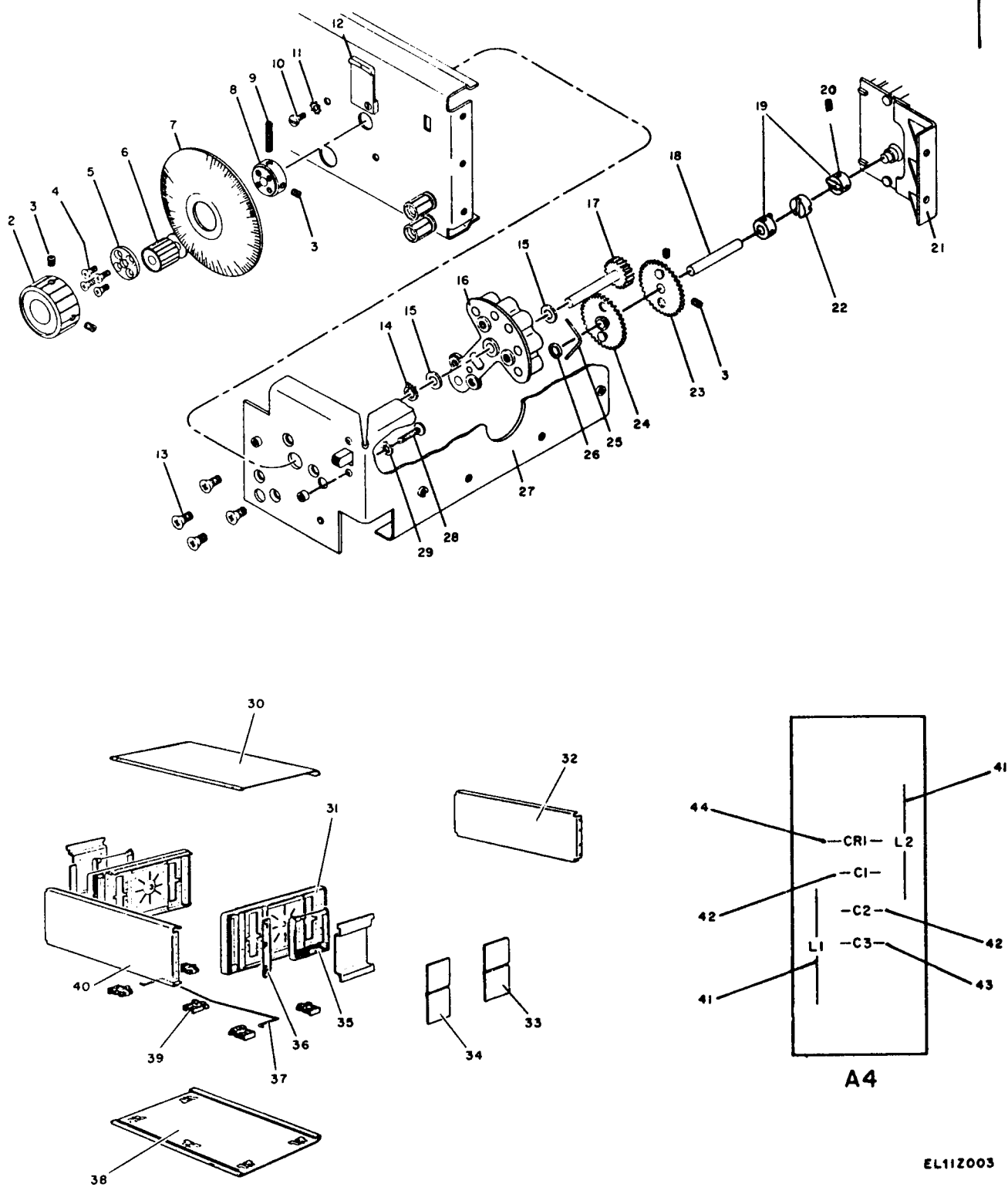
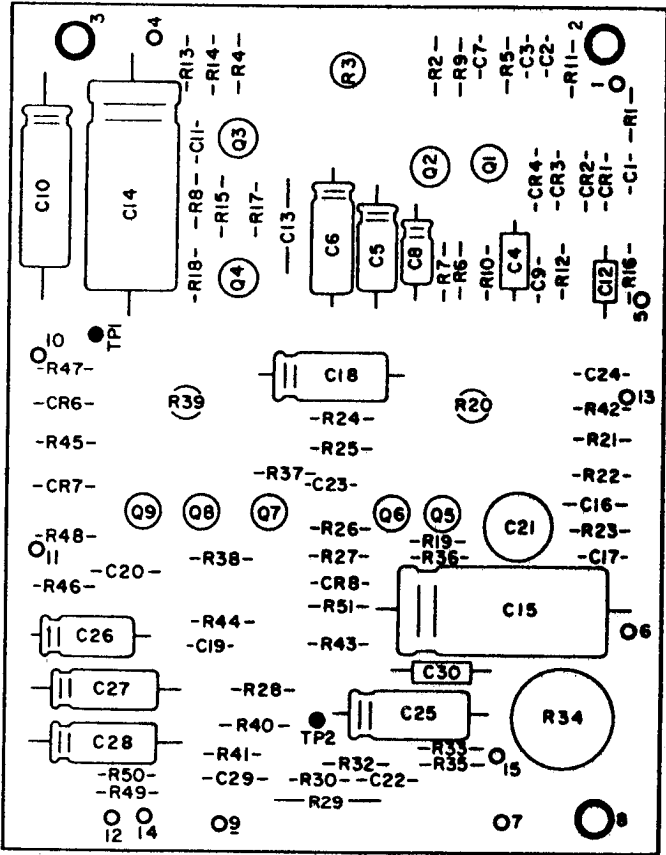


Figure 3. Mechanical parts and A4 PC board.

| SECTION II. REPAIR PARTS LIST (CONTINUED) | | TM11-6625-1576-24P | | | | | | |
|---|------|--------------------|------------------|-------------|-------------|------------------------------------|------|------|
| (1) | (2) | (3) | (4) | (5) | (6) | | (7) | (8) |
| ILLUSTRATION | SMR | NATIONAL | PART | FSCM | DESCRIPTION | | UNIT | QTY |
| (A) | (B) | STOCK | NUMBER | | | | OF | INC |
| FIG | ITEM | NUMBER | | | | USABLE ON | MEAS | IN |
| NO. | NO. | | | | | CODE | | UNIT |
| 3 | 1 | AHHHH | 6625-00-369-9227 | 00333-60701 | 28480 | FREQUENCY TUNING SUBASSEMBLY | EA | 1 |
| 3 | 2 | PAOZZ | 5355-00-059-9065 | 0370-0160 | 28480 | KNOB, PLASTIC, BLACK | EA | 1 |
| 3 | 3 | PAOZZ | 5305-00-719-5342 | MS51963-34 | 96906 | SETSCREW | EA | 4 |
| 3 | 4 | XDHZZ | | 2370-0016 | 28480 | SCREW, MACHINE | EA | 4 |
| 3 | 5 | PAHZZ | 6625-00-772-6119 | 61B40D4 | 28480 | DIAL CONTROL | EA | 1 |
| 3 | 6 | XDHZZ | | 5040-0669 | 28480 | DISC ASSEMBLY, VERNIER | EA | 1 |
| 3 | 7 | XDHZZ | | 00333-04001 | 28480 | PLATE, DIAL | EA | 1 |
| 3 | 8 | XDHZZ | | 5020-0630 | 28480 | HUB, DIAL | EA | 1 |
| 3 | 9 | XDHZZ | | 3030-0004 | 28480 | SETSCREW | EA | 1 |
| 3 | 10 | XDHZZ | | 2390-0009 | 28480 | SCREW, MACHINE | EA | 2 |
| 3 | 11 | XDHZZ | | 2190-0010 | 28480 | LOCKWASHER | EA | 2 |
| 3 | 12 | PAHZZ | 5355-00-238-7865 | 5040-0619 | 28480 | INDICATOR | EA | 1 |
| 3 | 13 | XDHZZ | | 2530-0003 | 28480 | SCREW, MACHINE | EA | 4 |
| 3 | 14 | PAHZZ | 5365-00-720-8064 | 0510-0005 | 28480 | CLIP, RETAINER | EA | 1 |
| 3 | 15 | XDHZZ | | 3050-0017 | 28480 | WASHER, FLAT | EA | 2 |
| 3 | 16 | XDHZZ | | 5020-0639 | 28480 | CASTING, CAPACITOR, DRIVE | EA | 1 |
| 3 | 17 | XDHZZ | | 00333-63601 | 28480 | GEAR ASSEMBLY, SPUR | EA | 1 |
| 3 | 18 | XDHZZ | | 5020-0327 | 28480 | SHAFT, STRAIGHT | EA | 1 |
| 3 | 19 | PAHZZ | 5950-00-947-3345 | 1500-0002 | 28480 | YOKE, COUPLER | EA | 2 |
| 3 | 20 | XDHZZ | | 3030-0022 | 28480 | SETSCREW | EA | 2 |
| 3 | 21 | XDHZZ | | 5040-0631 | 28480 | BRACKET, MOUNTING | EA | 1 |
| 3 | 22 | PAHZZ | 6625-00-991-1149 | 1500-0004 | 28480 | COUPLER, INSULATOR | EA | 1 |
| 3 | 23 | PAHZZ | 3020-00-289-9755 | 5060-0020 | 28480 | GEAR, SPUR, PLAIN, 72 TEETH | EA | 1 |
| 3 | 24 | PAHZZ | 3020-00-677-4928 | 5060-0021 | 28480 | GEAR, SPUR, BRASS, 72 TEETH | EA | 1 |
| 3 | 25 | PAHZZ | 5360-00-763-0796 | 5000-0637 | 28480 | SPRING, LEAF | EA | 1 |
| 3 | 26 | PAHZZ | 5310-00-245-3604 | 3050-0180 | 28480 | WASHER, NONMETALLIC | EA | 2 |
| 3 | 27 | XDHZZ | | 00331-00102 | 28480 | PLATE, CAPACITOR, MOUNTING | EA | 1 |
| 3 | 28 | XDHZZ | | 2460-0004 | 28480 | BOLT | EA | 2 |
| 3 | 29 | XDHZZ | | 2190-0057 | 28480 | LOCKWASHER | EA | 2 |
| 3 | 30 | XDHZZ | | 5060-0739 | 28480 | COVER, TOP | EA | 1 |
| 3 | 31 | XDHZZ | | 5060-0731 | 28480 | FRAME, SIDE | EA | 2 |
| 3 | 32 | XDHZZ | | 00334-00202 | 28480 | PANEL, REAR, SN908-02415 AND BELOW | CZQ | EA 1 |
| 3 | 32 | XDHZZ | | 00334-00203 | 28480 | PANEL, REAR | CZQ | EA 1 |
| 3 | 32 | XDHZZ | | 00333-00203 | 28480 | PANEL, REAR | CZN | EA 1 |
| 3 | 32 | XDHZZ | | 00333-00202 | 28480 | PANEL, REAR, SN910-01665 AND BELOW | CZN | EA 1 |
| 3 | 33 | XDHZZ | | 5000-0732 | 28480 | COVER, REAR | EA | 2 |
| 3 | 34 | XDHZZ | | 5000-0733 | 28480 | COVER, FRONT | EA | 2 |
| 3 | 35 | PAHZZ | 5340-00-435-5340 | 5060-0222 | 28480 | HANDLE | EA | 2 |
| 3 | 36 | XDHZZ | | 5000-0051 | 28480 | STRIP, TRIM | EA | 2 |
| 3 | 37 | PAHZZ | 6625-00-760-9521 | 1490-0030 | 28480 | STAND, TILT | EA | 1 |
| 3 | 38 | XDHZZ | | 5060-0751 | 28480 | COVER, BOTTOM | EA | 1 |
| 3 | 39 | PAHZZ | 6625-00-903-0348 | 5060-0767 | 28480 | MOUNT, RESILIENT | EA | 4 |
| 3 | 40 | XDHZZ | | 00334-00201 | 28480 | PANEL, FRONT | CZQ | EA 1 |

| SECTION II. REPAIR PARTS LIST (CONTINUED) | | | | | TM11-6625-1576-24P | | | | |
|---|------|----------|------------------|--------------|--------------------|-----------------------------------|------|------|---|
| (1) | (2) | (3) | (4) | (5) | (6) | (7) | (8) | | |
| ILLUSTRATION | SMR | NATIONAL | PART | FSCM | DESCRIPTION | UNIT | QTY | | |
| (A) | (B) | CODE | STOCK | | | OF | INC | | |
| FIG | ITEM | | NUMBER | | | MEAS | IN | | |
| NO. | NO. | | | | | USABLE ON CODE | UNIT | UNIT | |
| 3 | 40 | XDHZZ | | 00333-00201 | 28480 | PANEL, FRONT | CNZ | EA | 1 |
| 3 | 41 | PAHZZ | 5950-00-055-3592 | 9140-0052 | 28480 | COIL, RADIO FREQUENCY | | EA | 2 |
| 3 | 42 | PAHZZ | 5910-00-806-3412 | CM06FS202J03 | 81349 | CAPACITOR, FIXED, MICA DIELECTRIC | | EA | 2 |
| 3 | 43 | PAHZZ | 5910-00-781-1154 | CM06FD152G03 | 81349 | CAPACITOR, FIXED, MICA DIELECTRIC | | EA | 1 |
| 3 | 44 | PAHZZ | 5961-00-954-9182 | 1910-0016 | 28480 | SEMICONDUCTOR, DEVICE, DIODE | | EA | 1 |



A2

| LEGEND | | | |
|------------|------------|------------|------------|
| REF DES | ITEM NO | REF DES | ITEM NO |
| C1 | 1 | R12 | 40 |
| C2 | 2 | R13 | 41 |
| C3 | 2 | R14 | 42 |
| C4 | 3 | R15 | 43 |
| C5 | 4 | R16 | 44 |
| C6 | 5 | R17 | 40 |
| C7 | 6 | R18 | 45 |
| C8 | 7 | R19 | 46 |
| C9 | 8 | R20 | 43 |
| C10 | 9 | R21 | 36 |
| C11 | 2 | R22 | 47 |
| C12 | 10 | R23 | 48 |
| C13 | 11 | R24 | 49 |
| C14 | 12 | R25 | 50 |
| C15 | 13 | R26 | 51 |
| C16 | 14 | R27 | 52 |
| C17 | 15 | R28 | 53 |
| C18 | 16 | R29 | 54 |
| C19 | 17 | R30 | 30 |
| C20 | 18 | R32 | 55 |
| C21 | 19 | R33 | 56 |
| C22 | 20 | R34 | 57 |
| C24 | 21 | R35 | 56 |
| C25 | 16 | R36 | 58 |
| C26 | 22 | R37 | 36 |
| C27 | 23 | R38 | 59 |
| C28 | 23 | R39 | 60 |
| C29 | 24 | R40 | 61 |
| C30 | 25 | R41 | 62 |
| CR1 | 26 | R42 | 63 |
| CR2 | 26 | R43 | 64 |
| CR3 | 26 | R44 | 59 |
| CR4 | 26 | R45 | 53 |
| CR5 | 27 | R46 | 36 |
| CR6 | 28 | R47 | 47 |
| CR7 | 28 | R48 | 47 |
| CR8 | 29 | R49 | 51 |
| R1 | 30 | R50 | 51 |
| R2 | 31 | R51 | 65 |
| R3 | 32 | Q1 | 66 |
| R4 | 33 | Q2 | 67 |
| R5 | 34 | Q3 | 68 |
| R6 | 35 | Q4 | 69 |
| R7 | 36 | Q5 | 70 |
| R8 | 35 | Q6 | 71 |
| R9 | 37 | Q7 | 72 |
| R10 | 38 | Q8 | 71 |
| R11 | 39 | Q9 | 71 |

EL11Z004

Figure 4. Impedance converter.

| SECTION II. REPAIR PARTS LIST (CONTINUED) | | | | TM11-6625-1576-24P | | | | | |
|---|------|----------|------------------|--------------------|-------------|--|---------|------|---|
| (1) | (2) | (3) | (4) | (5) | (6) | | (7) | (8) | |
| ILLUSTRATION | SMR | NATIONAL | PART | FSCM | DESCRIPTION | | UNIT | QTY | |
| (A) | (B) | CODE | STOCK | | | | OF | INC | |
| FIG | ITEM | | NUMBER | | | | MEAS | IN | |
| NO. | NO. | | | | | USABLE ON CODE | | UNIT | |
| GROUP 01: IMPEDANCE CONVERTER | | | | | | | | | |
| 4 | 1 | PAHZZ | 5910-00-068-3923 | RDM15C12055C | 00853 | CAPACITOR, FIXED, MICA, DIELECTRIC | EA | 1 | |
| 4 | 2 | PAHZZ | 5910-00-914-4732 | RDM15F391J3C | 00853 | CAPACITOR, FIXED, MICA, DIELECTRIC | EA | 3 | |
| 4 | 3 | PAHZZ | 5910-00-852-3033 | 150D185X9035B2DYS | 56289 | CAPACITOR, FIXED, ELECTROLYTIC | EA | 1 | |
| 4 | 4 | PAHZZ | 5910-00-893-5180 | 30D506G006CB4M1 | 56289 | CAPACITOR, FIXED, ELECTROLYTIC | EA | 1 | |
| 4 | 5 | PAHZZ | 5910-00-923-0531 | 30D207G003CC2DSM | 56289 | CAPACITOR, FIXED, ELECTROLYTIC | EA | 1 | |
| 4 | 6 | PAHZZ | 5910-00-257-0227 | RDM15C220J5C | 00853 | CAPACITOR, FIXED, MICA, DIELECTRIC | EA | 1 | |
| 4 | 7 | XDHZZ | | 30D106G015BA4 | 56289 | CAPACITOR, FIXED, ELECTROLYTIC | EA | 1 | |
| 4 | 8 | PAHZZ | 5910-00-774-7319 | RDM15E820J3C | 72136 | CAPACITOR, FIXED, MICA, DIELECTRIC | EA | 1 | |
| 4 | 9 | PAHZZ | 5910-00-774-9141 | 30D207G015DH4 | 56289 | CAPACITOR, FIXED, ELECTROLYTIC | EA | 1 | |
| 4 | 10 | PAHZZ | 5910-00-187-0032 | 150D224X9035A2 | 56289 | CAPACITOR, FIXED, ELECTROLYTIC | EA | 1 | |
| 4 | 10 | PAHZZ | 5910-00-728-2215 | 0150-0084 | 28480 | CAPACITOR, FIXED, CERAMIC 33A SN533-00200 AND BELOW 334A SN538-00200 AND BELOW | EA | 1 | |
| 4 | 11 | PAHZZ | 5910-00-911-9271 | 192P10392PTS | 56289 | CAPACITOR, FIXED, PLASTIC, DIELECTRIC | EA | 1 | |
| 4 | 12 | PAHZZ | 5910-00-933-8812 | 34D507G015FJ4 | 56289 | CAPACITOR, FIXED, ELECTROLYTIC | EA | 1 | |
| 4 | 13 | XDHZZ | | 34D138G2R5FJ4DSB | 56289 | CAPACITOR, FIXED, ELECTROLYTIC | EA | 1 | |
| 4 | 14 | PAHZZ | 5910-00-852-2644 | 19C251A | 56289 | CAPACITOR, FIXED, CERAMIC, DIELECTRIC | EA | 1 | |
| 4 | 15 | PAHZZ | 5910-00-226-5187 | RDM15F161G3C | 72136 | CAPACITOR, FIXED, MICA, DIELECTRIC | EA | 1 | |
| 4 | 16 | PAHZZ | 5910-00-936-3722 | 30D107G016DC4 | 56289 | CAPACITOR, FIXED, ELECTROLYTIC | EA | 2 | |
| 4 | 17 | PAHZZ | 5910-00-914-4732 | 0140-0200 | 28480 | CAPACITOR, FIXED, MICA, DIELECTRIC | EA | 1 | |
| 4 | 17 | PAHZZ | 5910-00-914-2623 | 0140-0208 | 28480 | CAPACITOR, FIXED, MICA, DIELECTRIC 333A SN820-01315 AND BELOW, 334A SN908-01865 AND BELOW | EA | 1 | |
| 4 | 18 | XDHZZ | | 150D474X9035A2 | 56289 | CAPACITOR, FIXED, ELECTROLYTIC | EA | 1 | |
| 4 | 19 | PAHZZ | 5910-00-921-8821 | 557-610-34E | 72982 | CAPACITOR, VARIABLE, CERAMIC, DIELECTRIC | EA | 1 | |
| 4 | 20 | XDHZZ | | RDM15E390J3C | 72136 | CAPACITOR, FIXED, MICA, DIELECTRIC | EA | 1 | |
| 4 | 21 | PAHZZ | 5910-00-950-6822 | 0150-0121 | 28480 | CAPACITOR, FIXED, CERAMIC, DIELECTRIC | EA | 1 | |
| 4 | 22 | PAHZZ | 5910-00-893-5180 | 30D506G006CB2 | 56289 | CAPACITOR, FIXED, ELECTROLYTIC | CZN,CZQ | EA | 1 |
| 4 | 23 | XDHZZ | | 30D506G025CC2DSM | 56289 | CAPACITOR, FIXED, ELECTROLYTIC | EA | 2 | |
| 4 | 24 | PAHZZ | 5910-00-914-4732 | 0140-0200 | 28480 | CAPACITOR, FIXED, MICA, DIELECTRIC 333 SN910-01420 AND BELOW, 334 SN908-02015 AND BELOW | EA | 1 | |
| 4 | 24 | PAHZZ | 5910-00-914-2605 | 0140-0198 | 28480 | CAPACITOR, FIXED, MICA, DIELECTRIC | EA | 1 | |
| 4 | 25 | PAHZZ | 5910-00-807-7253 | 150D226X9015B2 | 56289 | CAPACITOR, FIXED, ELECTORLYTIC | EA | 1 | |
| 4 | 26 | PAHZZ | 5961-00-717-3670 | 1901-0044 | 28480 | SEMICONDUCTOR DEVICE, DIODE | EA | 4 | |
| 4 | 27 | PAHZZ | 5961-00-978-7468 | 1901-0025 | 28480 | SEMICONDUCTOR DEVICE, DIODE 333A SN624-00800 AND BELOW, 334A SN724-00825 AND BELOW | EA | 1 | |
| 4 | 28 | PAHZZ | 5961-00-891-4080 | 1N4392 | 80131 | SEMICONDUCTOR DEVICE, DIODE | EA | 2 | |
| 4 | 29 | PAHZZ | 5961-00-877-7123 | F21403 | 07263 | SEMICONDUCTOR DEVICE, DIODE | EA | 1 | |
| 4 | 30 | PAHZZ | 5905-00-111-4750 | RCR07G301JS | 81349 | RESISTOR, FIXED, COMPOSITION | EA | 2 | |
| 4 | 31 | PAHZZ | 5905-00-115-2262 | RCR07G913JS | 81349 | RESISTOR, FIXED, COMPOSITION | EA | 1 | |
| 4 | 32 | PAHZZ | 5905-00-410-1313 | 2100-2031 | 28480 | RESISTOR, VARIABLE, NON-WIREWOUND | EA | 1 | |
| 4 | 32 | PAHZZ | 5905-00-835-3407 | 2100-0094 | 284800 | RESISTOR, VARIABLE, NON-WIREWOUND 333A SN910-1665 AND BELOW, 334A SN908-02445 AND BELOW | EA | 1 | |
| 4 | 33 | PAHZZ | 5905-00-136-8430 | RCR07G363JS | 81349 | RESISTOR, FIXED, COMPOSITION | EA | 1 | |
| 4 | 34 | PAHZZ | 5905-00-246-8690 | RCR07G514JS | 81349 | RESISTOR, FIXED, COMPOSITION | EA | 1 | |
| 4 | 35 | PAHZZ | 5405-00-110-7620 | RCR07G102JS | 81349 | RESISTOR, FIXED, COMPOSITION | EA | 2 | |

| SECTION II. REPAIR PARTS LIST (CONTINUED) | | | | TM11-6625-1576-24P | | | |
|---|------|----------|------------------|--------------------|-------------|---|--------------|
| (1) | (2) | (3) | (4) | (5) | (6) | (7) | (8) |
| ILLUSTRATION | SMR | NATIONAL | PART | FSCM | DESCRIPTION | UNIT | QTY |
| (A) | (B) | STOCK | NUMBER | | | OF | INC |
| FIG | ITEM | NUMBER | | | | MEAS | IN |
| NO. | NO. | | | | | USABLE ON CODE | UNIT |
| 4 | 36 | PAHZZ | 5905-00-131-9729 | RCR07G302JS | 81349 | RESISTOR, FIXED, COMPOSITION | EA 4 |
| 4 | 37 | PAHZZ | 5905-00-126-6696 | RCR07G751JS | 81349 | RESISTOR, FIXED, COMPOSITION | EA 1 |
| 4 | 38 | PAHZZ | 5905-00-116-8555 | RCR07G153JS | 81349 | RESISTOR, FIXED, COMPOSITION | EA 1 |
| 4 | 39 | PAHZZ | 5905-00-122-0004 | RCR07G433JS | 81349 | RESISTOR, FIXED, COMPOSITION | EA 1 |
| 4 | 40 | PAHZZ | 5905-00-136-3891 | RCR07G621JS | 81349 | RESISTOR, FIXED, COMPOSITION | EA 2 |
| 4 | 41 | PAHZZ | 5905-00-135-6046 | RCR07G681JS | 81349 | RESISTOR, FIXED, COMPOSITION | EA 1 |
| 4 | 42 | PAHZZ | 5905-00-119-8811 | RCR07G151JS | 81349 | RESISTOR, FIXED, COMPOSITION | EA 1 |
| 4 | 43 | PAHZZ | 5905-00-120-9154 | RCR07G471JS | 81349 | RESISTOR, FIXED, COMPOSITION | EA 1 |
| 4 | 43 | PAHZZ | 5905-00-256-8993 | 2100-1738 | 28480 | RESISTOR, 333A SN910-01665 AND BELOW 334A SN908-02445 AND BELOW | EA 1 |
| 4 | 44 | PAHZZ | 5905-00-104-8368 | RCR07G470JS | 81349 | RESISTOR, FIXED, COMPOSITION | EA 1 |
| 4 | 44 | PAHZZ | 5905-00-960-0099 | 0683-1005 | 28480 | RESISTOR, FIXED, COMPOSITION 333A SN533-00200 AND BELOW, 334A SN538-00200 AND BELOW | EA 1 |
| 4 | 45 | PAHZZ | 5905-00-442-9356 | RCR07G240JS | 81349 | RESISTOR, FIXED, COMPOSITION | EA 1 |
| 4 | 45 | PAHZZ | 5905-00-960-0099 | 0683-1005 | 28480 | RESISTOR, FIXED, COMPOSITION 333A SN533-00200 AND BELOW, 334A SN538-00200 AND BELOW | EA 1 |
| 4 | 46 | PAHZZ | 5905-00-111-4845 | RCR07G201JS | 81349 | RESISTOR, FIXED, COMPOSITION | EA 1 |
| 4 | 47 | PAHZZ | 5905-00-116-2394 | RCR07G511JS | 81349 | RESISTOR, FIXED, COMPOSITION | EA 3 |
| 4 | 47 | PAHZZ | 5905-00-106-1249 | RCR07G510JS | 81349 | RESISTOR, FIXED, COMPOSITION, R47,48 ONLY | CZP,CZR EA 2 |
| 4 | 48 | PAHZZ | 5905-00-106-1249 | RCR07F510JS | 81349 | RESISTOR, FIXED, COMPOSITION | EA 1 |
| 4 | 49 | PAHZZ | 5905-00-110-7622 | RCR07G682JS | 81349 | RESISTOR, FIXED, COMPOSITION | EA 1 |
| 4 | 50 | PAHZZ | 5905-00-111-4845 | RCR07G201JS | 81349 | RESISTOR, FIXED, COMPOSITION | EA 1 |
| 4 | 51 | PAHZZ | 5905-00-114-0708 | RCR07G202JS | 81349 | RESISTOR, FIXED, COMPOSITION | EA 3 |
| 4 | 52 | PAHZZ | 5905-00-106-1278 | RCR07G123JS | 81349 | RESISTOR, FIXED, COMPOSITION | EA 1 |
| 4 | 53 | PAHZZ | 5905-00-442-9356 | RCR07G240JS | 81349 | RESISTOR, FIXED, COMPOSITION | EA 2 |
| 4 | 54 | PAHZZ | 5905-00-824-7535 | 0698-3174 | 28480 | RESISTOR, FIXED, FILM | EA 1 |
| 4 | 55 | PAHZZ | 5905-00-998-1813 | 0698-3147 | 28480 | RESISTOR, FIXED, FILM | EA 1 |
| 4 | 55 | PAHZZ | 5905-00-917-0588 | 0757-1102 | 28480 | RESISTOR, FIXED, FILM | CZP,CZR EA 1 |
| 4 | 56 | PAHZZ | 5905-00-998-1906 | 0757-0346 | 28480 | RESISTOR, FIXED, FILM | EA 2 |
| 4 | 57 | PAHZZ | 5905-00-858-4293 | 2100-0206 | 28480 | RESISTOR, VARIABLE, WIREWOUND | EA 1 |
| 4 | 58 | PAHZZ | 5905-00-115-3562 | RCR07G394JS | 81349 | RESISTOR, FIXED, COMPOSITION | EA 1 |
| 4 | 59 | PAHZZ | 5905-00-191-1183 | RCR07G101JS | 81349 | RESISTOR, FIXED, COMPOSITION | EA 2 |
| 4 | 60 | PAHZZ | | 2100-1788 | 28480 | RESISTOR, VARIABLE, NON-WIREWOUND | EA 1 |
| 4 | 60 | PAHZZ | 5905-00-771-5954 | 2100-0151 | 28480 | RESISTOR, FIXED, 33A SN910-01665 AND BELOW 334A SN908-02445 AND BELOW | EA 1 |
| 4 | 61 | PAHZZ | 5905-00-994-8500 | MF5CD36R5F | 19701 | RESISTOR, FIXED, FILM | EA 1 |
| 4 | 62 | PAHZZ | 5905-00-141-0742 | RCR07G181JS | 81349 | RESISTOR, FIXED, COMPOSITION | EA 1 |
| 4 | 63 | PAHZZ | 5905-00-107-0656 | RCR07G100JS | 81349 | RESISTOR, FIXED, COMPOSITION | EA 1 |
| 4 | 64 | PAHZZ | 5905-00-136-8406 | RCR07G242JS | 81349 | RESISTOR, FIXED, COMPOSITION | EA 1 |
| 4 | 65 | PAHZZ | 5905-00-400-4528 | RCR07G124JS | 81349 | RESISTOR, FIXED, COMPOSITION | EA 1 |
| 4 | 65 | PAHZZ | 5905-00-121-9938 | 0683-7535 | 28480 | RESISTOR, FIXED, COMPOSITION, 333A SN533-00200 AND BELOW, 334A SN534-00200 AND BELOW | EA 1 |
| 4 | 66 | PAHZZ | 5961-00-100-6335 | 1855-0052 | 28480 | TRANSISTOR, SILICON, P CHANNEL | EA 1 |
| 4 | 66 | PAHZZ | 5961-00-442-9470 | 1855-0082 | 28480 | TRANSISTOR, SILICON,333A,SN624-00800 AND BELOW 334A SN727-00825 AND BELOW | EA 1 |
| 4 | 67 | PAHZZ | 5961-00-450-6345 | 1853-0203 | 28480 | TRANSISTOR, SILICON PNP | EA 1 |

| SECTION II. REPAIR PARTS LIST (CONTINUED) | | | | | | TM11-6625-1576-24P | |
|---|------|----------|------------------|-----------|-------------|---------------------------------|------|
| (1) | (2) | (3) | (4) | (5) | (6) | (7) | (8) |
| ILLUSTRATION | SMR | NATIONAL | PART | FSCM | DESCRIPTION | UNIT | QTY |
| (A) | (B) | CODE | STOCK | | | OF | INC |
| FIG | ITEM | | NUMBER | | | MEAS | IN |
| NO. | NO. | | | | | USABLE ON CODE | UNIT |
| 4 | 68 | PAHZZ | 5961-00-472-5039 | 1854-0354 | 28480 | TRANSISTOR, SILICON, NPN | EA 1 |
| 4 | 69 | PAHZZ | 5961-00-021-7849 | 2N4250 | 80131 | TRANSISTOR, SILICON, PNP 2N4250 | EA 1 |
| 4 | 70 | PAHZZ | 5961-00-497-8891 | MDS6513-5 | 04713 | TRANSISTOR, SILICON, NPN | EA 1 |
| 4 | 71 | PAHZZ | 5961-00-931-6998 | 1853-0010 | 28480 | TRANSISTOR, SILICON, PNP | EA 3 |
| 4 | 72 | PAHZZ | 5961-00-919-4566 | 1854-0019 | 28480 | TRANSISTOR, SILICON, NPN | EA 1 |

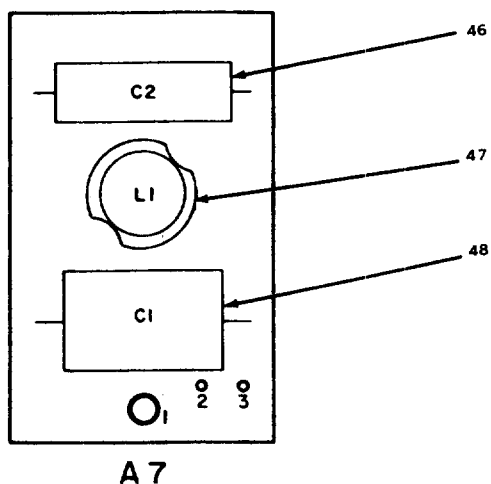
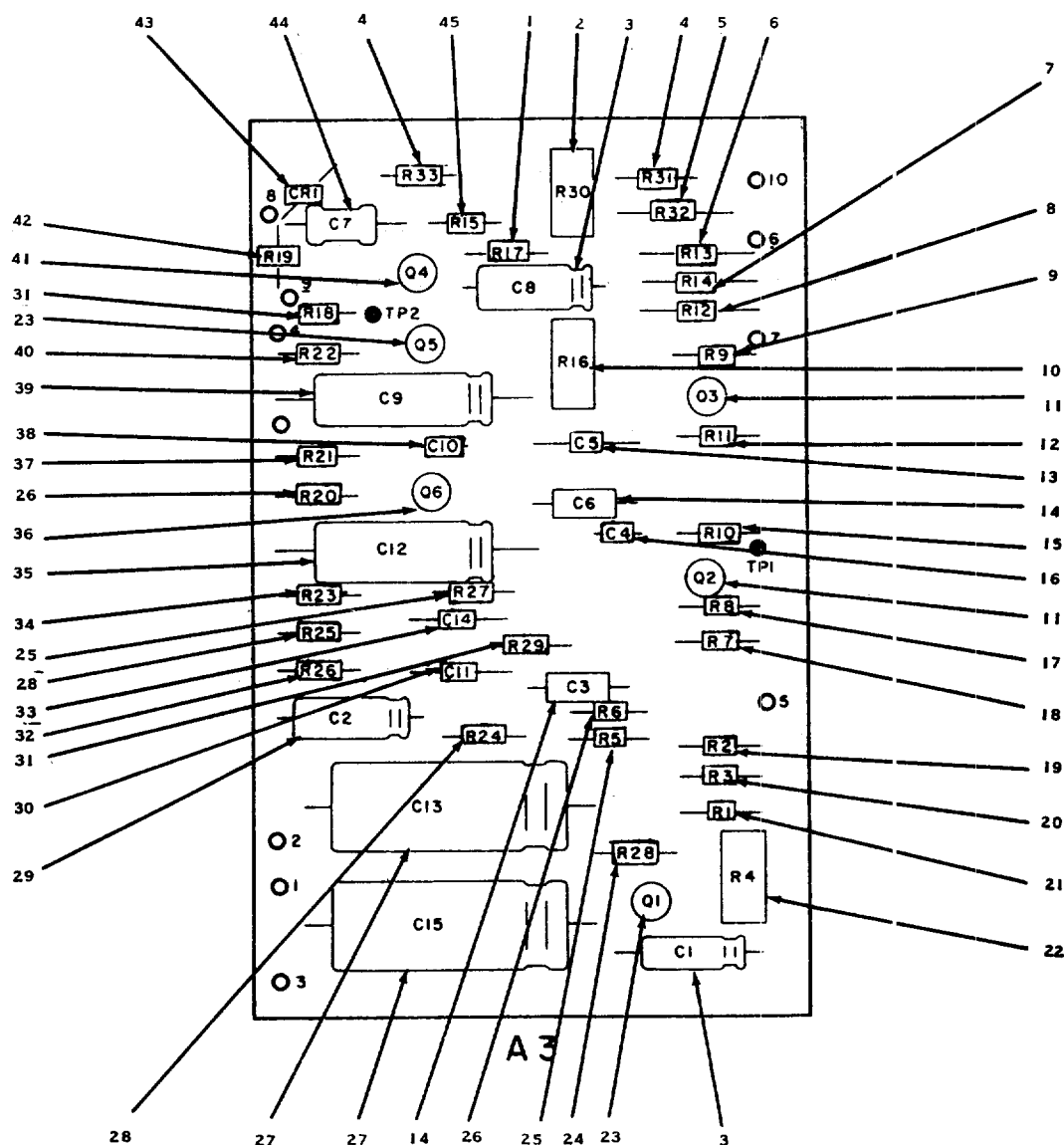
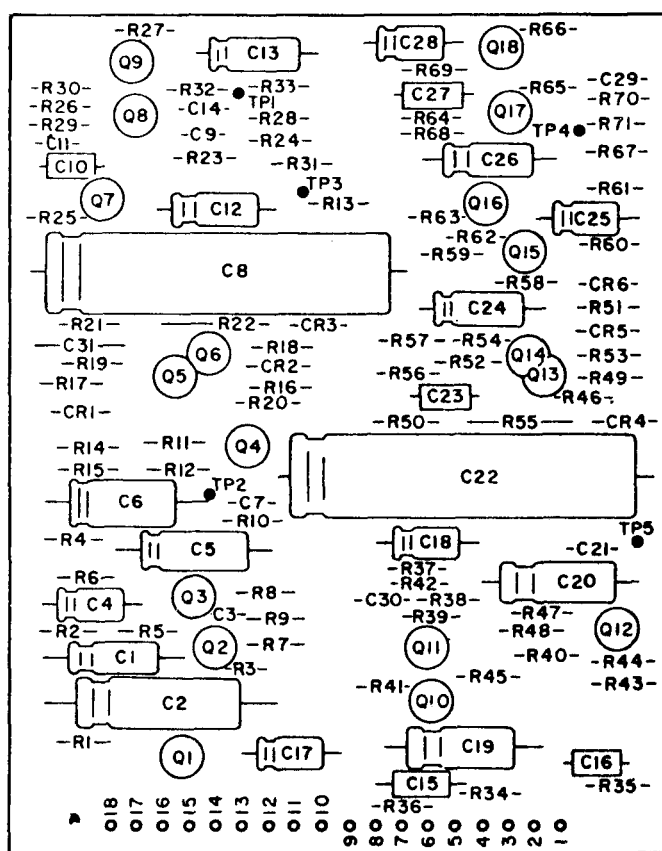


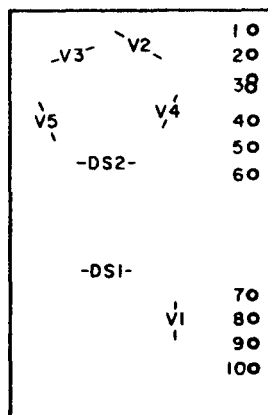
Figure 5. Rejection amplifier.

| SECTION II. REPAIR PARTS LIST (CONTINUED) | | | | TM11-6625-1576-24P | | | |
|---|------|----------|------------------|--------------------|-------------|---|------|
| (1) | (2) | (3) | (4) | (5) | (6) | (7) | (8) |
| ILLUSTRATION | SMR | NATIONAL | PART | FSCM | DESCRIPTION | UNIT | QTY |
| (A) (B) | CODE | STOCK | NUMBER | | | OF | INC |
| FIG ITEM | | NUMBER | | | | MEAS | IN |
| NO. NO. | | | | | | USABLE ON CODE | UNIT |
| GROUP 02: REJECTION AMPLIFIER | | | | | | | |
| 5 | 1 | PAHZZ | 5905-00-114-5417 | RCR20G302JS | 81349 | RESISTOR, FIXED, COMPOSITION | EA 1 |
| 5 | 2 | PAHZZ | 5905-00-877-7131 | 2100-0362 | 28480 | RESISTOR, VARIABLE, NONWIREWOUND, 333A SN980-1836 AND BELOW, 334A SN974-02690 AND BELOW | EA 1 |
| 5 | 3 | PAHZZ | 5910-00-773-7702 | 30D107G012DC4M1 | 56289 | CAPACITOR, FIXED, ELECTROLYTIC | EA 2 |
| 5 | 4 | PAHZZ | 5905-00-104-8330 | RCR20G333JS | 81349 | RESISTOR, FIXED, COMPOSITION | EA 2 |
| 5 | 5 | XDHZZ | | 0757-0842 | 28480 | RESISTOR, FIXED, FILM | EA 1 |
| 5 | 6 | PAHZZ | 5905-00-782-4069 | RN6SF7151F | 81349 | RESISTOR, FIXED, FILM | EA 1 |
| 5 | 7 | PAHZZ | 5905-00-782-4054 | RN65F2741F | 81349 | RESISTOR, FIXED, FILM | EA 1 |
| 5 | 8 | PAHZZ | 5905-00-978-6027 | RN65F3921F | 81349 | RESISTOR, FIXED, FILM | EA 1 |
| 5 | 9 | PAHZZ | 5905-00-858-6791 | 0757-0281 | 28480 | RESISTOR, FIXED, FILM | EA 1 |
| 5 | 10 | PAHZZ | 5905-00-064-3180 | 2100-1435 | 28480 | RESISTOR, VARIABLE, NONWIREWOUND | EA 1 |
| 5 | 10 | PAHZZ | 5905-00-105-1774 | 2100-2489 | 28480 | RESISTOR, VARIABLE, 333A SN980-011836 AND ABOVE 334A SN974-02691 AND ABOVE | EA 1 |
| 5 | 11 | PAHZZ | 5961-00-497-8891 | 1854-0297 | 28480 | TRANSISTOR, SILICON | EA 2 |
| 5 | 12 | PAHZZ | 5905-00-141-1187 | RCR20G203JS | 81349 | RESISTOR, FIXED, COMPOSITION | EA 1 |
| 5 | 13 | PAHZZ | 5910-00-954-5508 | CM05FD241J03 | 81349 | CAPACITOR, FIXED, MICA, DIELECTRIC | EA 1 |
| 5 | 14 | PAHZZ | 5910-00-934-2922 | CSR13G395KL | 81349 | CAPACITOR, FIXED, ELECTROLYTIC | EA 2 |
| 5 | 15 | PAHZZ | 5905-00-108-6922 | RCR20G151JS | 81349 | RESISTOR, FIXED, COMPOSITION | EA 1 |
| 5 | 16 | PAHZZ | 5905-00-933-7538 | 0140-0203 | 28480 | CAPACITOR, FIXED, MICA, DIELECTRIC | EA 1 |
| 5 | 17 | PAHZZ | 5905-00-141-1165 | RCR20G682JS | 81349 | RESISTOR, FIXED, COMPOSITION | EA 1 |
| 5 | 18 | PAHZZ | 5905-00-110-0196 | RCR20G102JS | 81349 | RESISTOR, FIXED, COMPOSITION | EA 1 |
| 5 | 19 | PAHZZ | 5905-00-104-8335 | RCR20G124JS | 81349 | RESISTOR, FIXED, COMPOSITION | EA 1 |
| 5 | 20 | PAHZZ | 5905-00-110-0993 | RCR20G123JS | 81349 | RESISTOR, FIXED, COMPOSITION, 333A SN910-0152 AND BELOW, 334A SN908-02165 AND BELOW | EA 1 |
| 5 | 20 | PAHZZ | 5905-00-141-0591 | RCR20G103JS | 81349 | RESISTOR, FIXED, COMPOSITION | EA 1 |
| 5 | 21 | PAHZZ | 5905-00-114-5399 | RCR20G241JS | 81349 | RESISTOR, FIXED, COMPOSITION | EA 1 |
| 5 | 22 | PAHZZ | 5905-00-064-3181 | 2100-1436 | 28480 | RESISTOR, VARIABLE | EA 1 |
| 5 | 22 | PAHZZ | 5905-00-476-5797 | 2100-2522 | 28480 | RESISTOR, VARIABLE, 333A SN980-01836 AND ABOVE 3334A SN974-02691 AND ABOVE | EA 1 |
| 5 | 23 | PAHZZ | 5961-00-083-3317 | 2N3904 | 81013 | TRANSISTOR, 2N3904 | EA 2 |
| 5 | 24 | PAHZZ | 5905-00-141-0591 | RCR20G103JS | 81349 | RESISTOR, FIXED, COMPOSITION | EA 1 |
| 5 | 25 | PAHZZ | 5905-00-141-0727 | RCR20G201JS | 81349 | RESISTOR, FIXED, COMPOSITION | EA 2 |
| 5 | 26 | PAHZZ | 5905-00-114-5425 | RCR20G362JS | 81349 | RESISTOR, FIXED, COMPOSITION | EA 2 |
| 5 | 27 | PAHZZ | 5910-00-933-8812 | 34D507G015FJ4 | 56289 | CAPACITOR, FIXED, ELECTROLYTIC | EA 2 |
| 5 | 28 | PAHZZ | 5905-00-935-8539 | RCR20G202JS | 81349 | RESISTOR, FIXED, COMPOSITION | EA 2 |
| 5 | 29 | PAHZZ | 5910-00-923-0531 | 30D307G003CC2DSM | 56289 | CAPACITOR, FIXED, ELECTROLYTIC | EA 1 |
| 5 | 30 | PAHZZ | 5910-00-828-0457 | 0140-0110 | 28480 | CAPACITOR, FIXED, MICA, DIELECTRIC | EA 1 |
| 5 | 31 | PAHZZ | 5905-00-116-8568 | RCR20G752JS | 81349 | RESISTOR, FIXED, COMPOSITION | EA 2 |
| 5 | 32 | PAHZZ | 5905-00-111-4734 | RCR20G470JS | 81349 | RESISTOR, FIXED, COMPOSITION | EA 1 |
| 5 | 33 | PAHZZ | 5910-00-984-8702 | CM05E560J03 | 81349 | CAPACITOR, FIXED, MICA, DIELECTRIC | EA 1 |
| 5 | 34 | PAHZZ | 5905-00-104-8334 | RCR20G331JS | 81349 | RESISTOR, FIXED, COMPOSITION | EA 1 |
| 5 | 35 | PAHZZ | 5910-00-774-9141 | 30D207G015DR4 | 56289 | CAPACITOR, FIXED, ELECTROLYTIC | EA 1 |
| 5 | 36 | PAHZZ | 5961-00-931-0372 | 2N3906 | 80131 | TRANSISTOR, GERMANIUM, PNP | EA 1 |
| 5 | 37 | PAHZZ | 5905-00-141-0598 | RCR20G561JS | 81349 | RESISTOR, FIXED, COMPOSITION | EA 1 |

| SECTION II. REPAIR PARTS LIST (CONTINUED) | | | | | | TM11-6625-1576-24P | | |
|---|------|----------|------------------|---------------|-------------|---------------------------------------|------|------|
| (1) | (2) | (3) | (4) | (5) | (6) | (7) | (8) | |
| ILLUSTRATION | SMR | NATIONAL | PART | FSCM | DESCRIPTION | UNIT | QTY | |
| (A) (B) | CODE | STOCK | NUMBER | | | OF | INC | |
| FIG ITEM | | NUMBER | | | | MEAS | IN | |
| NO. NO. | | | | | | USABLE ON | UNIT | UNIT |
| | | | | | | CODE | | |
| 5 | 38 | PAHZZ | 5910-00-088-1627 | CM05FD151GP3 | 81349 | CAPACITOR, FIXED, MICA, DIELECTRIC | EA | 1 |
| 5 | 39 | PAHZZ | 5905-00-877-7738 | 30D307G006DF2 | 56289 | CAPACITOR, FIXED, ELECTROLYTIC | EA | 1 |
| 5 | 40 | PAHZZ | 5905-00-935-3841 | RC20GF301J | 81349 | RESISTOR, FIXED, COMPOSITION | EA | 1 |
| 5 | 41 | PAHZZ | 5961-00-931-7010 | 1855-0006 | 28480 | TRANSISTOR, SILICON, P CHANNEL FET | EA | 1 |
| 5 | 42 | PAHZZ | 5905-00-141-1183 | RC07GF101J | 81349 | RESISTOR, FIXED, COMPOSITION | EA | 1 |
| 5 | 43 | PAHZZ | 5961-00-931-7011 | 1901-0053 | 28480 | SEMICONDUCTOR DEVICE, DIODE | EA | 1 |
| 5 | 44 | PAHZZ | 5910-00-829-0245 | 0170-0040 | 28480 | CAPACITOR, FIXED, PLASTIC, DIELECTRIC | EA | 1 |
| 5 | 45 | PAHZZ | 5905-00-246-9396 | RCR20G126JS | 81349 | RESISTOR, FIXED, COMPOSITION | EA | 1 |
| 5 | 46 | XDHZZ | | 663UW74791W | 84411 | CAPACITOR, FIXED, PLASTIC, DIELECTRIC | EA | 1 |
| 5 | 47 | PAHZZ | 5950-00-491-3900 | 9100-1317 | 28480 | COIL, RADIO FREQUENCY | EA | 1 |
| 5 | 48 | PAHZZ | 5910-00-497-9152 | 0160-2115 | 28480 | CAPACITOR, FIXED, PLASTIC, DIELECTRIC | EA | 1 |



A5



A6

LEGEND

| REF DES | ITEM NO | REF DES | ITEM NO |
|------------|------------|------------|------------|
| C1 | 1 | R24 | 21 |
| C2 | 2 | R25 | 34 |
| C3 | 3 | R26 | 21 |
| C4 | 4 | R27 | 21 |
| C5 | 5 | R28 | 21 |
| C6 | 5 | R29 | 21 |
| C7 | 3 | R30 | 21 |
| C8 | 6 | R31 | 35 |
| C9 | 7 | R32 | 36 |
| C10 | 8 | R33 | 37 |
| C11 | 3 | R34 | 38 |
| C12 | 1 | R35 | 38 |
| C13 | 1 | R36 | 21 |
| C14 | 9 | R37 | 21 |
| C15 | 10 | R38 | 24 |
| C16 | 8 | R39 | 24 |
| C17 | 4 | R40 | 23 |
| C18 | 4 | R41 | 23 |
| C19 | 5 | R42 | 23 |
| C20 | 5 | R43 | 21 |
| C21 | 3 | R44 | 21 |
| C22 | 6 | R45 | 25 |
| C23 | 11 | R46 | 38 |
| C24 | 1 | R47 | 27 |
| C25 | 4 | R48 | 21 |
| C26 | 12 | R49 | 20 |
| C27 | 13 | R50 | 21 |
| C28 | 4 | R51 | 28 |
| C29 | 9 | R52 | 29 |
| C30 | 3 | R53 | 30 |
| C31 | 14 | R54 | 31 |
| CR1 | 15 | R55 | 39 |
| CR2 | 16 | R56 | 40 |
| CR3 | 16 | R57 | 41 |
| CR4 | 15 | R58 | 21 |
| CR5 | 16 | R59 | 42 |
| CR6 | 16 | R60 | 21 |
| DS1 | 17 | R61 | 43 |
| DS2 | 17 | R62 | 43 |
| V1 | 18 | R63 | 43 |
| V2 | 18 | R64 | 43 |
| V3 | 18 | R65 | 21 |
| V4 | 19 | R66 | 21 |
| V5 | 19 | R67 | 21 |
| R1 | 20 | R68 | 21 |
| R2 | 21 | R69 | 21 |
| R3 | 22 | R70 | 36 |
| R4 | 21 | R71 | 37 |
| R5 | 23 | Q1 | 44 |
| R6 | 23 | Q2 | 44 |
| R7 | 24 | Q3 | 44 |
| R8 | 24 | Q4 | 45 |
| R9 | 23 | Q5 | 44 |
| R10 | 21 | Q6 | 44 |
| R11 | 21 | Q7 | 44 |
| R12 | 25 | Q8 | 46 |
| R13 | 26 | Q9 | 46 |
| R14 | 27 | Q10 | 44 |
| R15 | 21 | Q11 | 44 |
| R16 | 20 | Q12 | 45 |
| R17 | 21 | Q13 | 44 |
| R18 | 28 | Q14 | 44 |
| R19 | 29 | Q15 | 44 |
| R20 | 30 | Q16 | 44 |
| R21 | 31 | Q17 | 46 |
| R22 | 32 | Q18 | 46 |
| R23 | 33 | | |

EL11Z006

Figure 6. Metering circuit.

| SECTION II. REPAIR PARTS LIST (CONTINUED) | | | | TM11-6625-1576-24P | | | | | |
|---|------|----------|------------------|--------------------|-------------|---|------|------|--|
| (1) | (2) | (3) | (4) | (5) | (6) | | (7) | (8) | |
| ILLUSTRATION | SMR | NATIONAL | PART | FSCM | DESCRIPTION | | UNIT | QTY | |
| (A) | (B) | CODE | STOCK | | | | OF | INC | |
| FIG | ITEM | | NUMBER | | | USABLE ON | MEAS | IN | |
| NO. | NO. | | | | | CODE | | UNIT | |
| GROUP 03: METERING CIRCUIT | | | | | | | | | |
| 6 | 1 | PAHZZ | 5910-00-851-6017 | 30D356G00BB2DSM | 56289 | CAPACITOR, FIXED, ELECTROLYTIC | EA | 4 | |
| 6 | 2 | XDHZZ | | 0180-0063 | 28480 | CAPACITOR, FIXED, ELECTROLYTIC | EA | 1 | |
| 6 | 3 | PAHZZ | 5910-00-542-2010 | 0150-0093 | 28480 | CAPACITOR, FIXED, CERAMIC, DIELECTRIC | EA | 5 | |
| 6 | 4 | XDHZZ | | 30D106G015DSM | 56289 | CAPACITOR, FIXED, ELECTROLYTIC | EA | 5 | |
| 6 | 5 | XDHZZ | | 30D506G025CC2DSM | 56289 | CAPACITOR, FIXED, ELECTROLYTIC | EA | 4 | |
| 6 | 6 | PAHZZ | 5910-00-877-7747 | 34D268G2R5FP4 | 56289 | CAPACITOR, FIXED, ELECTROLYTIC | EA | 2 | |
| 6 | 7 | PAHZZ | 5910-00-776-8913 | 0140-0195 | 28480 | CAPACITOR, FIXED, MICA, DIELECTRIC | EA | 1 | |
| 6 | 8 | PAHZZ | 5910-00-187-0032 | 150D224X9035A2 | 56289 | CAPACITOR, FIXED, ELECTROLYTIC | EA | 2 | |
| 6 | 9 | PAHZZ | 5910-00-957-2054 | CM05ED330G03 | 81349 | CAPACITOR, FIXED, MICA, DIELECTRIC | EA | 2 | |
| 6 | 10 | PAHZZ | 5910-00-809-8667 | 0180-0161 | 28480 | CAPACITOR, FIXED, ELECTROLYTIC | EA | 1 | |
| 6 | 11 | PAHZZ | 5910-00-837-9319 | SCM225FP20D2 | 82647 | CAPACITOR, FIXED, ELECTROLYTIC | EA | 1 | |
| 6 | 12 | PAHZZ | 5910-00-080-1890 | 0180-0045 | 28480 | CAPACITOR, FIXED, ELECTROLYTIC | EA | 1 | |
| 6 | 13 | PAHZZ | 5910-00-961-9591 | 0160-0157 | 28480 | CAPACITOR, FIXED, PLASTIC DIELECTRIC | EA | 1 | |
| 6 | 14 | PAHZZ | 5910-00-911-9271 | 0160-0161 | 28480 | CAPACITOR, FIXED, PLASTIC, DIELECTRIC 333A SN533-00201 AND ABOVE 334A SN538-00201 AND ABOVE | EA | 1 | |
| 6 | 15 | PAHZZ | 5961-00-954-9182 | 1910-0016 | 28480 | SEMICONDUCTOR DEVICE, DIODE | EA | 2 | |
| 6 | 16 | PAHZZ | 5961-00-978-7468 | 1901-0025 | 28480 | SEMICONDUCTOR DEVICE, DIODE | EA | 4 | |
| 6 | 17 | PAOZZ | 6240-00-880-8699 | 1869 | 08108 | LAMP, INCANDESCENT | EA | 2 | |
| 6 | 18 | PAHZZ | 5961-00-830-4759 | CL905HL | 03911 | PHOTOELECTRIC CELL | EA | 3 | |
| 6 | 19 | PAHZZ | 5961-00-831-8518 | CL905HN | 03911 | PHOTOELECTRIC CELL | EA | 2 | |
| 6 | 20 | PAHZZ | 5905-00-116-8556 | RCR07G223JS | 81349 | RESISTOR, FIXED, COMPOSITION | EA | 3 | |
| 6 | 21 | PAHZZ | 5905-00-106-3666 | RCR07G103JS | 81349 | RESISTOR, FIXED, COMPOSITION | EA | 25 | |
| 6 | 22 | PAHZZ | 5905-00-119-3504 | RCR07G273JS | 81349 | RESISTOR, FIXED, COMPOSITION | EA | 1 | |
| 6 | 23 | PAHZZ | 5905-00-106-1278 | RCR07G123JS | 81349 | RESISTOR, FIXED, COMPOSITION | EA | 6 | |
| 6 | 24 | PAHZZ | 5905-00-191-1183 | RCR07G101JS | 81349 | RESISTOR, FIXED, COMPOSITION | EA | 4 | |
| 6 | 25 | PAHZZ | 5905-00-113-4858 | RCR07G754JS | 81349 | RESISTOR, FIXED, COMPOSITION | EA | 2 | |
| 6 | 26 | PAHZZ | 5905-00-104-8366 | RCR07G5R1JS | 81349 | RESISTOR, FIXED, COMPOSITION | EA | 1 | |
| 6 | 27 | PAHZZ | 5905-00-111-4845 | RCR07G201JS | 81349 | RESISTOR, FIXED, COMPOSITION | EA | 2 | |
| 6 | 28 | PAHZZ | 5905-00-114-0708 | RCR07G202JS | 81349 | RESISTOR, FIXED, COMPOSITION | EA | 2 | |
| 6 | 29 | PAHZZ | 5905-00-136-8430 | RCR07G363JS | 81349 | RESISTOR, FIXED, COMPOSITION | EA | 2 | |
| 6 | 30 | PAHZZ | 5905-00-111-1686 | RCR07G161JS | 81349 | RESISTOR, FIXED, COMPOSITION | EA | 2 | |
| 6 | 31 | PAHZZ | 5905-00-104-8370 | RCR07G361JS | 81349 | RESISTOR, FIXED, COMPOSITION | EA | 2 | |
| 6 | 32 | PAHZZ | | 0757-0834 | 28480 | RESISTOR, FIXED, FILM | EA | 1 | |
| 6 | 32 | XDHZZ | 5905-00-904-4404 | 0757-0437 | 28480 | RESISTOR, FIXED, FILM, 333A SN970-01786 AND ABOVE, 334A SN948-02616 AND ABOVE | EA | 1 | |
| 6 | 33 | PAHZZ | 5905-00-110-0388 | RCR07G104JS | 81349 | RESISTOR, FIXED, COMPOSITION | EA | 1 | |
| 6 | 34 | PAHZZ | 5905-00-111-1679 | RCR07G512JS | 81349 | RESISTOR, FIXED, COMPOSITION | EA | 1 | |
| 6 | 35 | PAHZZ | 5905-00-114-5344 | RCR07G184JS | 81349 | RESISTOR, FIXED, COMPOSITION | EA | 1 | |
| 6 | 36 | PAHZZ | 5905-00-121-9920 | RCR07G303JS | 81349 | RESISTOR, FIXED, COMPOSITION | EA | 2 | |
| 6 | 37 | PAHZZ | 5905-00-119-3505 | RCR07G683JS | 81349 | RESISTOR, FIXED, COMPOSITION | EA | 2 | |
| 6 | 38 | PAHZZ | 5905-00-107-0656 | RCR07G100JS | 81349 | RESISTOR, FIXED, COMPOSITION | EA | 3 | |
| 6 | 39 | PAHZZ | 5905-00-978-6022 | RN65F8251F | 81349 | RESISTOR, FIXED, FILM | EA | 1 | |

| SECTION II. REPAIR PARTS LIST (CONTINUED) | | | | | | TM11-6625-1576-24P | | |
|---|------|----------|------------------|-------------|--|--------------------|------|--|
| (1) | (2) | (3) | (4) | (5) | (6) | (7) | (8) | |
| ILLUSTRATION | SMR | NATIONAL | PART | FSCM | DESCRIPTION | UNIT | QTY | |
| (A) | (B) | CODE | STOCK | | | OF | INC | |
| FIG | ITEM | | NUMBER | | | MEAS | IN | |
| NO. | NO. | | | | | | UNIT | |
| 6 | 39 | XDZZ | | 0698-4470 | 28480 RESISTOR, FIXED, FILM, 333A SN970-01186 AND ABOVE 334A SN948-02616 AND ABOVE | EA | 1 | |
| 6 | 40 | PAZZ | 5905-00-115-3560 | RCR07G183JS | 81349 RESISTOR, FIXED, COMPOSITION, 333A SN970-01786 AND ABOVE 334A SN948-02616 AND ABOVE | EA | 1 | |
| 6 | 41 | PAZZ | 5905-00-105-7764 | RCR07G222JS | 81349 RESISTOR, FIXED, COMPOSITION | EA | 1 | |
| 6 | 42 | PAZZ | 5905-00-119-8812 | RCR07G121JS | 81349 RESISTOR, FIXED, COMPOSITION | EA | 1 | |
| 6 | 43 | PAZZ | 5905-00-126-6683 | RCR07G332JS | 81349 RESISTOR, FIXED, COMPOSITION | EA | 4 | |
| 6 | 44 | PAZZ | 5961-00-931-0152 | 2N3391 | 80131 TRANSISTOR, SILICON, NPN | EA | 12 | |
| 6 | 45 | PAZZ | 5961-00-826-0799 | 2N1304 | 80131 TRANSISTOR, GERMANIUM, NPN | EA | 2 | |
| 6 | 46 | PAZZ | 5961-00-866-4810 | 2N708 | 80131 TRANSISTOR, SILICON, PLANAR, NPN | EA | 4 | |

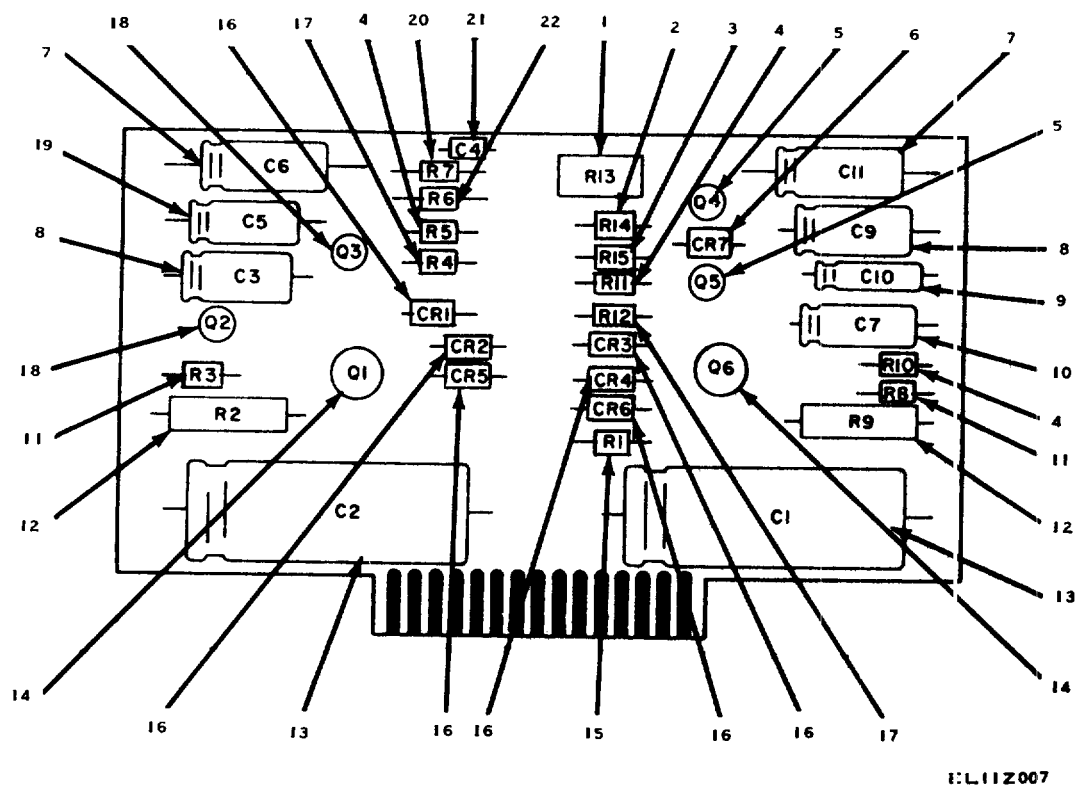


Figure 7. Power supply.

| SECTION II. REPAIR PARTS LIST (CONTINUED) | | | | | TM11-6625-1576-24P | | | |
|---|------|----------|------------------|-----------------|--|---|------|---|
| (1) | (2) | (3) | (4) | (5) | (6) | (7) | (8) | |
| ILLUSTRATION | SMR | NATIONAL | PART | FSCM | DESCRIPTION | UNIT | QTY | |
| (A) | (B) | CODE | STOCK | | | OF | INC | |
| FIG | ITEM | | NUMBER | | | MEAS | IN | |
| NO. | NO. | | | | | USABLE ON CODE | UNIT | |
| GROUP 04: POWER SUPPLY | | | | | | | | |
| 7 | 1 | XDHZZ | 2100-1434 | 28480 | RESISTOR, VARIABLE, 333A SN910-01665 AND BELOW 334A SN908-02445 AND BELOW | EA | 1 | |
| 7 | 1 | PAHZZ | 5905-00-476-5796 | 2100-2633 | 28480 | RESISTOR, VARIABLE LIN, CERMET | EA | 1 |
| 7 | 2 | PAHZZ | 5905-00-111-4738 | RCR20G152JS | 81349 | RESISTOR, FIXED, COMPOSITION | EA | 1 |
| 7 | 3 | PAHZZ | 5905-00-111-4744 | RCR20G512JS | 81349 | RESISTOR, FIXED, COMPOSITION | EA | 1 |
| 7 | 4 | PAHZZ | 5905-00-141-1165 | RCR20G682JS | 81349 | RESISTOR, FIXED, COMPOSITION | EA | 3 |
| 7 | 5 | PAHZZ | 5961-00-868-6521 | 2N404A | 80131 | TRANSISTOR, GERMANIUM, PNP | EA | 2 |
| 7 | 6 | PAHZZ | 5961-00-058-8828 | SZ10939-144 | 04713 | SEMICONDUCTOR DEVICE, DIODE | EA | 1 |
| 7 | 7 | PAHZZ | 5910-00-781-9397 | 30D406G050DD2 | 56289 | CAPACITOR, FIXED, ELECTROLYTIC | EA | 2 |
| 7 | 8 | PAHZZ | 5910-00-936-3722 | 30D107G016DC4 | 56289 | CAPACITOR, FIXED, ELECTROLYTIC | EA | 2 |
| 7 | 9 | PAHZZ | 5910-00-889-4854 | 30D106G025BB4 | 56289 | CAPACITOR, FIXED, ELECTROLYTIC | EA | 1 |
| 7 | 10 | PAHZZ | 5910-00-773-7702 | 30D107G012DC4M1 | 56289 | CAPACITOR, FIXED, ELECTROLYTIC | EA | 1 |
| 7 | 11 | PAHZZ | 5905-00-110-0196 | RCR20G102JS | 81349 | RESISTOR, FIXED, COMPOSITION | EA | 2 |
| 7 | 12 | PAHZZ | 5905-00-877-7839 | 0766-0029 | 28480 | RESISTOR, FIXED, FILM | EA | 2 |
| 7 | 13 | XDHZZ | 3439720DSB | 56289 | CAPACITOR, FIXED, ELECTROLYTIC | EA | 2 | |
| 7 | 14 | PAHZZ | 5961-00-082-1617 | 2N1701 | 80131 | TRANSISTOR, SILICON, NPN | EA | 2 |
| 7 | 15 | PAHZZ | 5905-00-104-8330 | RCR20G333JS | 81349 | RESISTOR, FIXED, COMPOSITION, 333A SN910-01525 AND BELOW, 334A SN908-02165 AND BELOW | EA | 1 |
| 7 | 16 | PAHZZ | 5961-00-060-8638 | 1901-0026 | 28480 | SEMICONDUCTOR DEVICE, DIODE | EA | 6 |
| 7 | 17 | PAHZZ | 5905-00-116-8568 | RCR20G752JS | 81349 | RESISTOR, FIXED, COMPOSITION | EA | 2 |
| 7 | 18 | PAHZZ | 5961-00-985-9073 | 2N3053 | 80131 | TRANSISTOR, SILICON, NPN | EA | 2 |
| 7 | 19 | XDHZZ | 30D506G025DD4M1 | 56289 | CAPACITOR, FIXED, ELECTROLYTIC | EA | 1 | |
| 7 | 20 | PAHZZ | 5905-00-238-0424 | MF6CD1272F | 19701 | RESISTOR, FIXED, FILM, 333A SN744, 334A SN743 | EA | 1 |
| 7 | 21 | PAHZZ | 5910-00-064-3199 | 29C332 | 56289 | CAPACITOR, FIXED, CERAMIC, DIELECTRIC | EA | 1 |
| 7 | 22 | PAHZZ | 5905-00-062-1090 | MF6CD1212F | 19701 | RESISTOR, FIXED, FILM 333A SN744, 334A SN743 | EA | 1 |

SECTION IV. NATIONAL STOCK NUMBER AND PART NUMBER INDEX

| STOCK NUMBER | FIG. NO. | ITEM NO. | STOCK NUMBER | FIG. NO. | ITEM NO. |
|------------------|-------------|-------------|------------------|-------------|-------------|
| 3020-00-289-9755 | 3 | 23 | 5905-00-111-4845 | 6 | 27 |
| 3020-00-677-4928 | 3 | 24 | 5905-00-111-4845 | 4 | 46 |
| 4930-00-812-7105 | 1 | 7 | 5905-00-113-4858 | 6 | 25 |
| 5305-00-719-5342 | 3 | 3 | 5905-00-114-0708 | 4 | 51 |
| 5310-00-245-3604 | 3 | 26 | 5905-00-114-0708 | 6 | 28 |
| 5340-00-435-5340 | 3 | 35 | 5905-00-114-5344 | 6 | 35 |
| 5355-00-059-9065 | 3 | 2 | 5905-00-114-5366 | 2 | 39 |
| 5355-00-061-8597 | 2 | 48 | 5905-00-114-5399 | 5 | 21 |
| 5355-00-238-7865 | 3 | 12 | 5905-00-114-5417 | 5 | 1 |
| 5355-00-908-9402 | 2 | 13 | 5905-00-114-5425 | 5 | 26 |
| 5355-00-908-9418 | 2 | 49 | 5905-00-115-3560 | 6 | 40 |
| 5355-00-919-9953 | 2 | 44 | 5905-00-115-3562 | 4 | 58 |
| 5360-00-763-0796 | 3 | 25 | 5905-00-116-233 | 4 | 47 |
| 5365-00-720-8064 | 3 | 14 | 5905-00-116-8555 | 4 | 38 |
| 5905-00-062-1090 | 7 | 22 | 5905-00-116-8555 | 6 | 40 |
| 5905-00-064-3180 | 5 | 10 | 5905-00-116-8556 | 6 | 20 |
| 5905-00-064-3181 | 5 | 22 | 5905-00-116-8568 | 5 | 31 |
| 5905-00-078-7402 | 1 | 2 | 5905-00-116-8568 | 7 | 17 |
| 5905-00-104-8330 | 2 | 16 | 5905-00-119-3504 | 6 | 22 |
| 5905-00-104-8330 | 5 | 4 | 5905-00-119-3505 | 6 | 37 |
| 5905-00-104-8330 | 7 | 15 | 5905-00-119-8811 | 4 | 42 |
| 5905-00-104-8334 | 5 | 34 | 5905-00-119-8812 | 6 | 42 |
| 5905-00-104-8335 | 5 | 19 | 5905-00-120-9154 | 4 | 43 |
| 5905-00-104-8366 | 6 | 26 | 5905-00-121-9920 | 6 | 36 |
| 5905-00-104-8368 | 4 | 44 | 5905-00-121-9938 | 4 | 65 |
| 5905-00-104-8370 | 6 | 31 | 5905-00-122-0004 | 4 | 39 |
| 5905-00-105-1774 | 5 | 10 | 5905-00-126-6683 | 6 | 43 |
| 5905-00-105-7764 | 6 | 41 | 5905-00-126-6696 | 4 | 37 |
| 5905-00-106-1249 | 4 | 47 | 5905-00-131-9729 | 4 | 36 |
| 5905-00-106-1249 | 4 | 48 | 5905-00-135-6046 | 4 | 41 |
| 5905-00-106-1278 | 4 | 52 | 5905-00-136-3891 | 4 | 40 |
| 5905-00-106-1278 | 6 | 23 | 5905-00-136-8406 | 4 | 64 |
| 5905-00-106-3666 | 6 | 21 | 5905-00-136-8430 | 4 | 33 |
| 5905-00-107-0656 | 4 | 63 | 5905-00-136-8430 | 6 | 29 |
| 5905-00-107-0656 | 6 | 38 | 5905-00-141-0591 | 2 | 25 |
| 5905-00-108-6922 | 5 | 15 | 5905-00-141-0591 | 5 | 20 |
| 5905-00-110-0196 | 5 | 18 | 5905-00-141-0591 | 5 | 24 |
| 5905-00-110-0196 | 7 | 11 | 5905-00-141-0598 | 5 | 37 |
| 5905-00-110-0388 | 6 | 33 | 5905-00-141-0727 | 5 | 25 |
| 5905-00-110-0993 | 5 | 20 | 5905-00-141-0742 | 4 | 62 |
| 5905-00-110-7620 | 4 | 35 | 5905-00-141-1165 | 5 | 17 |
| 5905-00-110-7622 | 4 | 49 | 5905-00-141-1165 | 7 | 4 |
| 5905-00-111-1679 | 2 | 43 | 5905-00-141-1183 | 5 | 42 |
| 5905-00-111-1679 | 6 | 34 | 5905-00-141-1187 | 5 | 12 |
| 5905-00-111-1686 | 6 | 30 | 5905-00-191-1183 | 4 | 59 |
| 5905-00-111-4734 | 5 | 32 | 5905-00-191-1183 | 6 | 24 |
| 5905-00-111-4738 | 7 | 2 | 5905-00-238-0424 | 7 | 20 |
| 5905-00-111-4742 | 2 | 24 | 5905-00-246-8690 | 4 | 34 |
| 5905-00-111-4744 | 7 | 3 | 5905-00-246-9396 | 5 | 45 |
| 5905-00-111-4750 | 4 | 30 | 5905-00-256-8993 | 4 | 43 |
| 5905-00-111-4845 | 4 | 50 | 5905-00-400-4528 | 4 | 65 |

SECTION IV. NATIONAL STOCK NUMBER AND PART NUMBER INDEX

| STOCK NUMBER | FIG. NO. | ITEM NO. | STOCK NUMBER | FIG. NO. | ITEM NO. |
|------------------|-------------|-------------|------------------|-------------|-------------|
| 5905-00-410-1313 | 4 | 32 | 5910-00-774-9141 | 5 | 35 |
| 5905-00-442-9356 | 4 | 45 | 5910-00-776-8913 | 6 | 7 |
| 5905-00-442-9356 | 4 | 53 | 5910-00-781-1154 | 3 | 43 |
| 5905-00-476-5796 | 7 | 1 | 5910-00-781-9397 | 7 | 7 |
| 5905-00-476-5797 | 5 | 22 | | | |
| 5905-00-543-0006 | 2 | 22 | 5910-00-806-3412 | 3 | 42 |
| 5905-00-722-0134 | 2 | 34 | 5910-00-807-7253 | 4 | 25 |
| 5905-00-771-5954 | 4 | 60 | 5910-00-809-8667 | 6 | 10 |
| 5905-00-782-4054 | 5 | 7 | 5910-00-828-0457 | 5 | 30 |
| 5905-00-782-4069 | 5 | 6 | 5910-00-829-0245 | 5 | 44 |
| 5905-00-824-7535 | 4 | 54 | 5910-00-837-9319 | 6 | 11 |
| 5905-00-835-3407 | 4 | 32 | 5910-00-851-6017 | 6 | 1 |
| 5905-00-858-4293 | 4 | 57 | 5910-00-852-2644 | 4 | 14 |
| 5905-00-858-6791 | 5 | 9 | 5910-00-852-3033 | 4 | 3 |
| 5905-00-877-7131 | 5 | 2 | 5910-00-866-5544 | 2 | 8 |
| 5905-00-877-7738 | 5 | 39 | 5910-00-877-7747 | 6 | 6 |
| 5905-00-877-7839 | 7 | 12 | 5910-00-889-4854 | 7 | 9 |
| 5905-00-891-4202 | 2 | 27 | 5910-00-893-5180 | 4 | 4 |
| 5905-00-904-4404 | 6 | 32 | 5910-00-893-5180 | 4 | 22 |
| 5905-00-917-0588 | 4 | 55 | 5910-00-911-9271 | 4 | 11 |
| 5905-00-933-7538 | 5 | 16 | 5910-00-911-9271 | 6 | 14 |
| 5905-00-935-3841 | 5 | 40 | 5910-00-914-2605 | 4 | 24 |
| 5905-00-935-8539 | 5 | 28 | 5910-00-914-2623 | 4 | 17 |
| 5905-00-960-0099 | 4 | 44 | 5910-00-914-4732 | 4 | 2 |
| 5905-00-960-0099 | 4 | 45 | 5910-00-914-4732 | 4 | 17 |
| 5905-00-978-6022 | 6 | 39 | 5910-00-914-4732 | 4 | 24 |
| 5905-00-978-6027 | 5 | 8 | 5910-00-921-8821 | 4 | 19 |
| 5905-00-994-8500 | 4 | 61 | 5910-00-923-0531 | 4 | 5 |
| 5905-00-998-1813 | 4 | 55 | 5910-00-923-9531 | 5 | 29 |
| 5905-00-998-1906 | 4 | 56 | 5910-00-928-5344 | 2 | 41 |
| 5910-00-034-1831 | 2 | 7 | 5910-00-933-8812 | 4 | 12 |
| 5910-00-064-3199 | 7 | 21 | 5910-00-933-8812 | 5 | 27 |
| 5910-00-068-3923 | 4 | 1 | 5910-00-934-2922 | 5 | 14 |
| 5910-00-080-1890 | 6 | 12 | 5910-00-936-3722 | 4 | 16 |
| 5910-00-088-1627 | 5 | 38 | 5910-00-936-3722 | 7 | 8 |
| 5915-00-115-2262 | 4 | 31 | 5910-00-950-6822 | 4 | 21 |
| 5910-00-187-0032 | 4 | 10 | 5910-00-954-5508 | 5 | 13 |
| 5910-00-187-0032 | 6 | 8 | 5910-00-957-2054 | 6 | 9 |
| 5910-00-226-5187 | 4 | 15 | 5910-00-961-9591 | 6 | 13 |
| 5910-00-257-0227 | 4 | 6 | 5910-00-984-8702 | 5 | 33 |
| 5910-00-444-6641 | 2 | 36 | 5920-00-221-5673 | 2 | 31 |
| 5910-00-497-9152 | 5 | 48 | 5920-00-229-1312 | 2 | 22 |
| 5910-00-542-2010 | 6 | 3 | 5920-00-434-9726 | 2 | 32 |
| 5910-00-578-5543 | 2 | 6 | 5920-00-881-4636 | 2 | 21 |
| 5910-00-728-2215 | 4 | 10 | 5930-00-058-9082 | 1 | 8 |
| 5910-00-728-4387 | 2 | 35 | 5930-00-064-3185 | 1 | 6 |
| 5910-00-773-7702 | 5 | 3 | 5930-00-406-8746 | 1 | 13 |
| 5910-00-773-7702 | 7 | 10 | 5930-00-539-7661 | 1 | 3 |
| 5910-00-774-7319 | 4 | 8 | 5935-00-897-9351 | 1 | 14 |
| 5910-00-774-9141 | 4 | 9 | 5930-00-907-2197 | 1 | 11 |

SECTION IV. NATIONAL STOCK NUMBER AND PART NUMBER INDEX

| STOCK NUMBER | FIG. NO. | ITEM NO. | STOCK NUMBER | FIG. NO. | ITEM NO. |
|------------------|-------------|-------------|------------------|-------------|-------------|
| 5930-00-977-1760 | 1 | 13 | 6625-00-077-2362 | 2 | 17 |
| 5940-00-926-9822 | 2 | 42 | 6625-00-246-4422 | 2 | 1 |
| 5950-00-055-3592 | 3 | 41 | 6625-00-253-3799 | 2 | 10 |
| 5950-00-111-4734 | 2 | 28 | 6625-00-369-9227 | 3 | 1 |
| 5950-00-477-7567 | 2 | 23 | 6625-00-400-5265 | 2 | 5 |
| 5950-00-491-3900 | 5 | 47 | 6625-00-724-1672 | 1 | 5 |
| 5950-00-835-3027 | 2 | 26 | 6625-00-724-1675 | 1 | 1 |
| 5950-00-877-3465 | 2 | 37 | 6625-00-724-1677 | 1 | 4 |
| 5950-00-947-3345 | 3 | 19 | 6625-00-727-4381 | 2 | 3 |
| 5961-00-021-7849 | 4 | 16 | 6625-00-727-4383 | 2 | 1 |
| 5961-00-058-8828 | 7 | 6 | 6625-00-727-4403 | 2 | 15 |
| 5961-00-060-8638 | 7 | 16 | 6625-00-760-9521 | 3 | 37 |
| 5961-00-082-1617 | 7 | 14 | 6625-00-772-6119 | 3 | 5 |
| 5961-00-083-3317 | 5 | 23 | 6625-00-802-8713 | 1 | 10 |
| 5961-00-100-6335 | 4 | 66 | 6625-00-903-0348 | 3 | 39 |
| 5961-00-442-9470 | 4 | 66 | 6625-00-991-1149 | 3 | 22 |
| 5961-00-450-6345 | 4 | 67 | | | |
| 5961-00-472-5039 | 4 | 68 | | | |
| 5961-00-497-8891 | 4 | 70 | | | |
| 5961-00-497-8891 | 5 | 11 | | | |
| 5961-00-717-3670 | 4 | 26 | | | |
| 5961-00-826-0799 | 6 | 45 | | | |
| 5961-00-830-4759 | 6 | 18 | | | |
| 5961-00-831-8518 | 6 | 19 | | | |
| 5961-00-866-4810 | 6 | 46 | | | |
| 5961-00-877-7123 | 4 | 29 | | | |
| 5961-00-878-6521 | 7 | 5 | | | |
| 5961-00-891-4080 | 4 | 28 | | | |
| 5961-00-919-4566 | 4 | 72 | | | |
| 5961-00-931-0152 | 6 | 44 | | | |
| 5961-00-931-0372 | 5 | 36 | | | |
| 5961-00-931-6998 | 4 | 71 | | | |
| 5961-00-931-7010 | 5 | 41 | | | |
| 5961-00-931-7011 | 5 | 43 | | | |
| 5961-00-954-9182 | 3 | 44 | | | |
| 5961-00-954-9182 | 6 | 15 | | | |
| 5961-00-978-7468 | 2 | 45 | | | |
| 5961-00-978-7468 | 4 | 27 | | | |
| 5961-00-978-7468 | 6 | 16 | | | |
| 5961-00-985-9073 | 7 | 18 | | | |
| 5970-00-080-9780 | 2 | 20 | | | |
| 5970-00-837-0058 | 2 | 40 | | | |
| 5970-00-837-0062 | 2 | 51 | | | |
| 5970-00-914-3897 | 2 | 19 | | | |
| 5995-00-067-5039 | 1 | 12 | | | |
| 5995-00-995-9822 | 1 | 15 | | | |
| 5999-00-809-8580 | 2 | 38 | | | |
| 6210-00-761-8898 | 1 | 9 | | | |
| 6240-00-880-8699 | 6 | 17 | | | |
| 6625-00-058-2595 | 1 | 10 | | | |

SECTION IV. NATIONAL STOCK NUMBER AND PART NUMBER INDEX (CONTINUED)

| PART NUMBER | FSCM | FIG. NO. | ITEM NO. | PART NUMBER | FSCM | FIG. NO. | ITEM NO. |
|----------------|-------|-------------|-------------|----------------|-------|-------------|-------------|
| AC3 | 82389 | 1 | 12 | RCR07G433JS | 81349 | 4 | 39 |
| CL905HL | 03911 | 6 | 18 | RCR07G470JS | 81349 | 4 | 44 |
| CL905HN | 03911 | 6 | 19 | RCR07G471JS | 81349 | 4 | 43 |
| CM05E560J03 | 81349 | 5 | 33 | RCR07G5R1JS | 81349 | 6 | 26 |
| CM05ED330G03 | 81349 | 6 | 9 | RCR07G510JS | 81349 | 4 | 47 |
| CM05FD151GP3 | 81349 | 5 | 38 | RCR07F510JS | 81349 | 4 | 48 |
| CM05FD241J03 | 81349 | 5 | 13 | RCR07G511JS | 81349 | 4 | 47 |
| CM06FD152G03 | 81349 | 3 | 43 | RCR07G512JS | 81349 | 6 | 34 |
| CM06FD202J03 | 81349 | 3 | 42 | RCR07G514JS | 81349 | 4 | 34 |
| CSR13G395KL | 81349 | 5 | 14 | RCR07G621JS | 81349 | 4 | 40 |
| F02GR062B | 81349 | 2 | 22 | RCR07G681JS | 81349 | 4 | 41 |
| F21403 | 07263 | 4 | 29 | RCR07G682JS | 81349 | 4 | 49 |
| KH4147 | 70903 | 1 | 15 | RCR07G683JS | 81349 | 6 | 37 |
| MDS6513-5 | 04713 | 4 | 70 | RCR07G751JS | 81349 | 4 | 37 |
| MF6CD1212F | 19701 | 7 | 22 | RCR07G754JS | 81349 | 6 | 25 |
| MF6CD1272F | 19701 | 7 | 20 | RCR07G913JS | 81349 | 4 | 31 |
| MI5CD36R5F | 19701 | 4 | 61 | RCR20G102JS | 81349 | 5 | 18 |
| MS51963-34 | 96906 | 3 | 3 | RCR20G102JS | 81349 | 7 | 11 |
| MS90078-19 | 96906 | 2 | 32 | RCR20G103JS | 81349 | 2 | 25 |
| RCR07G100JS | 81349 | 4 | 63 | RCR20G103JS | 81349 | 5 | 20 |
| RCR07G100JS | 81349 | 6 | 38 | RCR20G103JS | 81349 | 5 | 24 |
| RCR07G101JS | 81349 | 4 | 59 | RCR20G123JS | 81349 | 5 | 20 |
| RCR07G101JS | 81349 | 6 | 24 | RCR20G124JS | 81349 | 5 | 19 |
| RCR07G102JS | 81349 | 4 | 35 | RCR20G126JS | 81349 | 5 | 45 |
| RCR07G103JS | 81349 | 6 | 21 | RCR20G132JS | 81349 | 2 | 39 |
| RCR07G104JS | 81349 | 6 | 33 | RCR20G151JS | 81349 | 5 | 15 |
| RCR07G121JS | 81349 | 6 | 42 | RCR20G201JS | 81349 | 5 | 25 |
| RCR07G123JS | 81349 | 4 | 52 | RCR20G202JS | 81349 | 5 | 28 |
| RCR07G123JS | 81349 | 6 | 23 | RCR20G203JS | 81349 | 5 | 12 |
| RCR07G124JS | 81349 | 4 | 65 | RCR20G241JS | 81349 | 5 | 21 |
| RCR07G151JS | 81349 | 4 | 42 | RCR20G302JS | 81349 | 5 | 1 |
| RCR07G152JS | 81349 | 7 | 2 | RCR20G331JS | 81349 | 5 | 34 |
| RCR07G153JS | 81349 | 4 | 38 | RCR20G333JS | 81349 | 2 | 16 |
| RCR07G153JS | 81349 | 6 | 40 | RCR20G333JS | 81349 | 5 | 4 |
| RCR07G161JS | 81349 | 6 | 30 | RCR20G333JS | 81349 | 7 | 15 |
| RCR07G181JS | 81349 | 4 | 62 | RCR20G362JS | 81349 | 5 | 26 |
| RCR07G183JS | 81349 | 6 | 40 | RCR20G391JS | 81349 | 2 | 24 |
| RCR07G184JS | 81349 | 6 | 35 | RCR20G470JS | 81349 | 2 | 28 |
| RCR07G201JS | 81349 | 4 | 46 | RCR20G470JS | 81349 | 5 | 32 |
| RCR07G201JS | 81349 | 4 | 50 | RCR20G512JS | 81349 | 2 | 43 |
| RCR07G201JS | 81349 | 6 | 27 | RCR20G512JS | 81349 | 7 | 3 |
| RCR07G202JS | 81349 | 4 | 51 | RCR20G561JS | 81349 | 5 | 37 |
| RCR07G202JS | 81349 | 6 | 28 | RCR20G682JS | 81349 | 5 | 17 |
| RCR07G222JS | 81349 | 6 | 41 | RCR20G682JS | 81349 | 7 | 4 |
| RCR07G223JS | 81349 | 6 | 20 | RCR20G752JS | 81349 | 5 | 31 |
| RCR07G240JS | 81349 | 4 | 45 | RCR20G752JS | 81349 | 7 | 17 |
| RCR07G240JS | 81349 | 4 | 53 | RC07GF101J | 81349 | 5 | 42 |
| RCR07G242JS | 81349 | 4 | 64 | RC20GF301F | 81349 | 5 | 40 |
| RCR07G273JS | 81349 | 6 | 22 | RDM15C120J5C | 00853 | 4 | 1 |
| RCR07G301JS | 81349 | 4 | 30 | RDM15C220J5C | 00853 | 4 | 6 |
| RCR07G302JS | 81349 | 4 | 36 | RDM15E390J3C | 72136 | 4 | 20 |
| RCR07G303JS | 81349 | 6 | 36 | RDM15E820J3C | 72136 | 4 | 8 |
| RCR07G332JS | 81349 | 6 | 43 | RDM15F161G3C | 72136 | 4 | 15 |
| RCR07G361JS | 81349 | 6 | 31 | RDM15F391J3C | 00853 | 4 | 2 |
| RCR07G363JS | 81349 | 4 | 33 | RN65F2741F | 81349 | 5 | 7 |
| RCR07G363JS | 81349 | 6 | 29 | RN65F3921F | 81349 | 5 | 8 |
| RCR07G394JS | 81349 | 4 | 58 | RN65F7151 | 81349 | 5 | 6 |
| | | | | RN65F825F | 81349 | 6 | 39 |

SECTION IV. NATIONAL STOCK NUMBER AND PART NUMBER INDEX (CONTINUED)

| PART NUMBER | FSCM | FIG. NO. | ITEM NO. | PART NUMBER | FSCM | FIG. NO. | ITEM NO. |
|----------------|-------|-------------|-------------|-------------------|-------|-------------|-------------|
| SA25001 | 95265 | 2 | 26 | 0340-0099 | 28480 | 2 | 40 |
| SCM225FP20D2 | 82647 | 6 | 11 | 0340-0100 | 28480 | 2 | 51 |
| SS50 | 78488 | 1 | 3 | 0370-0046 | 28480 | 2 | 12 |
| SZ10939-144 | 04713 | 7 | 6 | 0370-0112 | 28480 | 2 | 44 |
| 00331-00102 | 28480 | 3 | 27 | 0370-0113 | 28480 | 2 | 13 |
| 00331-00601 | 28480 | 2 | 30 | 0370-0114 | 28480 | 2 | 49 |
| 00331-00602 | 28480 | 2 | 33 | 0370-0117 | 28480 | 2 | 48 |
| 00331-00603 | 28480 | 2 | 47 | 0370-0160 | 28480 | 3 | 2 |
| 00331-0101 | 28480 | 2 | 46 | 0380-0200 | 28480 | 2 | 14 |
| 00331-01201 | 28480 | 2 | 11 | 0510-0005 | 28480 | 3 | 14 |
| 00331-04102 | 28480 | 2 | 53 | 0683-1005 | 28480 | 4 | 44 |
| 00332-00602 | 28480 | 2 | 52 | 0683-1005 | 28480 | 4 | 45 |
| 00332-66502 | 28480 | 2 | 2 | 0683-7535 | 28480 | 4 | 65 |
| 00333-00201 | 28480 | 3 | 40 | | | | |
| 00333-00202 | 28480 | 3 | 32 | 0698-3174 | 28480 | 4 | 54 |
| 00333-00203 | 28480 | 3 | 32 | 0698-3147 | 28480 | 4 | 55 |
| 00333-04001 | 28480 | 3 | 7 | 0698-4470 | 28480 | 6 | 39 |
| 00333-60701 | 28480 | 3 | 1 | 0757-0281 | 28480 | 5 | 9 |
| 00333-61901 | 28480 | 1 | 1 | 0757-0346 | 28480 | 4 | 56 |
| 00333-61902 | 28480 | 1 | 5 | 0757-0437 | 28480 | 6 | 32 |
| 00333-61903 | 28480 | 1 | 4 | 0757-0834 | 28480 | 6 | 32 |
| 00333-63601 | 28480 | 3 | 17 | 0757-0842 | 28480 | 5 | 5 |
| 00333-66501 | 28480 | 2 | 17 | 0757-1102 | 28480 | 4 | 55 |
| 00333-66502 | 28480 | 2 | 1 | 0766-0029 | 28480 | 7 | 12 |
| 00333-66503 | 28480 | 2 | 5 | 0767-0001 | 28480 | 2 | 34 |
| 00333-66505 | 28480 | 2 | 15 | 0813-0029 | 28480 | 2 | 27 |
| 00333-66506 | 28480 | 2 | 10 | 1N4392 | 80131 | 4 | 28 |
| 00333-66507 | 28480 | 2 | 3 | 1120-0352 | 28480 | 1 | 10 |
| 00333-66508 | 28480 | 2 | 1 | 1120-0398 | 28480 | 1 | 10 |
| 00334-00201 | 28480 | 3 | 40 | 1250-0118 | 28480 | 1 | 14 |
| 00334-00202 | 28480 | 3 | 32 | 1251-0135 | 28480 | 2 | 29 |
| 00334-00203 | 28480 | 3 | 32 | 1490-0030 | 28480 | 3 | 37 |
| 0121-0004 | 28480 | 2 | 8 | 150DD224X9035A2 | 56289 | 6 | 8 |
| 0140-0021 | 28480 | 2 | 7 | 150D185X9035B2DYS | 56289 | 4 | 3 |
| 0140-0110 | 28480 | 5 | 30 | 150D224X9035A2 | 56289 | 4 | 10 |
| 0140-0195 | 28480 | 6 | 7 | 150D226X9015B2 | 56289 | 4 | 25 |
| 0140-0198 | 28480 | 4 | 24 | 150D474X9035A2 | 56289 | 4 | 18 |
| 0140-0200 | 28480 | 4 | 17 | 1500-0002 | 28480 | 3 | 19 |
| 0140-0200 | 28480 | 4 | 24 | 1500-0004 | 28480 | 3 | 22 |
| 0140-0203 | 28480 | 5 | 16 | 1510-0010 | 28480 | 2 | 42 |
| 0140-0206 | 28480 | 2 | 41 | 1510-0011 | 28480 | 2 | 50 |
| 0140-0208 | 28480 | 4 | 17 | 1853-0010 | 28480 | 4 | 71 |
| 0150-0015 | 28480 | 2 | 9 | | | | |
| 0150-0084 | 28480 | 4 | 10 | 1853-0203 | 28480 | 4 | 67 |
| 0150-0093 | 28480 | 6 | 3 | 1854-0019 | 28480 | 4 | 72 |
| 0150-0121 | 28480 | 4 | 21 | 1854-0297 | 28480 | 5 | 11 |
| 0160-0157 | 28480 | 6 | 13 | 1854-0354 | 28480 | 4 | 68 |
| 0160-0161 | 28480 | 6 | 14 | 1855-0006 | 28480 | 5 | 41 |
| 0160-2115 | 28480 | 5 | 48 | 1855-0052 | 28480 | 4 | 66 |
| 0160-3327 | 28480 | 2 | 36 | 1855-0082 | 28480 | 4 | 66 |
| 0160-3333 | 28480 | 2 | 18 | 1869 | 08108 | 6 | 17 |
| 0170-0040 | 28480 | 5 | 44 | 187 | 76854 | 1 | 11 |
| 0180-0045 | 28480 | 6 | 12 | 19C251A | 56289 | 4 | 14 |
| 0180-0063 | 28480 | 6 | 2 | 1901-0025 | 28480 | 45 | |
| 0180-0161 | 28480 | 6 | 10 | 1901-0025 | 28480 | 4 | 27 |
| 0340-0087 | 28480 | 2 | 19 | 1901-0025 | 28480 | 6 | 16 |
| 0340-0091 | 28480 | 2 | 20 | 1901-0026 | 28480 | 7 | 16 |

SECTION IV. NATIONAL STOCK NUMBER AND PART NUMBER INDEX (CONTINUED)

| PART NUMBER | FSCM | FIG. NO. | ITEM NO. | PART NUMBER | FSCM | FIG. NO. | ITEM NO. |
|------------------|-------|-------------|-------------|------------------|-------|-------------|-------------|
| 1901-0044 | 28480 | 4 | 26 | 3100-0878 | 28480 | 1 | 6 |
| 1901-0053 | 28480 | 5 | 43 | 3101-0036 | 28480 | 1 | 8 |
| 1910-0016 | 28480 | 3 | 44 | 3101-0889 | 28480 | 1 | 3 |
| 1910-0016 | 28480 | 6 | 15 | 3101-1234 | 28480 | 1 | 13 |
| 192P10392PTS | 56289 | 4 | 11 | 34D138G2R5FJ4DSB | 56289 | 4 | 13 |
| 2N1701 | 80131 | 7 | 14 | 34D268G2R5FP4 | 56289 | 6 | 6 |
| 2N3053 | 80131 | 7 | 18 | 34D507G015FJ4 | 56289 | 4 | 12 |
| 2N3391 | 80131 | 6 | 44 | 34D507G015FJ4 | 56289 | 5 | 27 |
| 2N3904 | 80131 | 5 | 23 | 342014 | 75915 | 2 | 21 |
| 2N3906 | 80131 | 5 | 36 | 3439720DSB | 56289 | 7 | 13 |
| 2N404A | 80131 | 7 | 5 | 357002 | 75915 | 2 | 31 |
| 2N4250 | 80131 | 4 | 69 | 4603 | 42190 | 1 | 7 |
| 2N708 | 80131 | 6 | 46 | 4633 | 42190 | 1 | 13 |
| 2100-0094 | 28480 | 4 | 32 | 5000-0051 | 28480 | 3 | 36 |
| 2100-0151 | 28480 | 4 | 60 | 5000-0637 | 28480 | 3 | 25 |
| 2100-0206 | 28480 | 4 | 57 | 5000-0732 | 28480 | 3 | 33 |
| 2100-0362 | 28480 | 5 | 2 | 5000-0733 | 28480 | 3 | 34 |
| 2100-1434 | 28480 | 7 | 1 | 5020-0327 | 28480 | 3 | 18 |
| 2100-1435 | 28480 | 5 | 10 | 5020-0630 | 28480 | 3 | 8 |
| 2100-1536 | 28480 | 5 | 22 | 5020-0639 | 28480 | 3 | 16 |
| 2100-1736 | 28480 | 1 | 2 | 503-000B2P028R | 72982 | 2 | 6 |
| 2100-1738 | 28480 | 4 | 43 | 5040-0601 | 28480 | 2 | 4 |
| 2100-1788 | 28480 | 4 | 60 | 5040-0619 | 28480 | 3 | 12 |
| 2100-2031 | 28480 | 4 | 32 | 5040-0631 | 28480 | 3 | 21 |
| 2100-2489 | 28480 | 5 | 10 | 5040-0669 | 28480 | 3 | 6 |
| 2100-2522 | 28480 | 5 | 22 | 5060-0020 | 28480 | 3 | 23 |
| 2100-2633 | 28480 | 7 | 1 | 5060-0021 | 28480 | 3 | 24 |
| 2110-0017 | 28480 | 2 | 22 | 5060-0222 | 28480 | 3 | 35 |
| 2190-0010 | 28480 | 3 | 11 | 5060-0731 | 28480 | 3 | 31 |
| 2190-0057 | 28480 | 3 | 29 | 5060-0739 | 28480 | 3 | 30 |
| 2370-0016 | 28480 | 3 | 4 | 5060-0751 | 28480 | 3 | 38 |
| 2390-0009 | 28480 | 3 | 10 | 5060-0767 | 28480 | 3 | 39 |
| 2460-0004 | 28480 | 3 | 28 | 5060-4916 | 28480 | 2 | 42 |
| 2530-0003 | 28480 | 3 | 13 | 599-124 | 72765 | 1 | 9 |
| 29C332 | 56289 | 7 | 21 | 61B40D4 | 28480 | 3 | 5 |
| 30D107G012DC4M1 | 56289 | 7 | 10 | 663UW33454W | 84411 | 2 | 35 |
| 30D106G015BA4 | 56289 | 4 | 7 | 663UW47491W | 84411 | 5 | 46 |
| 30D106G015DSM | 56289 | 6 | 4 | 9100-1316 | 28480 | 2 | 23 |
| 30D107G012DC4M1 | 53289 | 5 | 3 | 9100-1317 | 28480 | 5 | 47 |
| 30D107G016DC4 | 56289 | 4 | 15 | 9140-0052 | 28480 | 3 | 41 |
| 30D107G016DC4 | 53289 | 7 | 8 | 9170-0016 | 28480 | 2 | 38 |
| 30D106G025BB4 | 56289 | 7 | 9 | 9170-0805 | 28480 | 2 | 37 |
| 30D207G003CC2DSM | 56289 | 4 | 5 | | | | |
| 30D207G003CC2DSM | 56289 | 5 | 29 | | | | |
| 30D207G015DH4 | 56289 | 4 | 9 | | | | |
| 30D207G015DH4 | 56289 | 5 | 35 | | | | |
| 30D307G006DF2 | 56289 | 5 | 39 | | | | |
| 30D356G00BB2DSM | 56289 | 6 | 1 | | | | |
| 30D406G050DD2 | 56289 | 7 | 7 | | | | |
| 30D506G006CB4M1 | 56289 | 4 | 4 | | | | |
| 30D506G025CC2DSM | 56289 | 4 | 23 | | | | |
| 30D506G006C02 | 56289 | 4 | 22 | | | | |
| 30D506G025CC2DSM | 56289 | 6 | 5 | | | | |
| 30D506G025DD4M1 | 56289 | 7 | 19 | | | | |
| 3030-0004 | 28480 | 3 | 9 | | | | |
| 3030-0022 | 28480 | 3 | 20 | | | | |
| 3050-0017 | 28480 | 3 | 15 | | | | |
| 3050-0180 | 28480 | 3 | 26 | | | | |



SOMETHING WRONG WITH THIS MANUAL?

THEN...JOT DOWN THE DOPE ABOUT IT ON THIS FORM, TEAR IT OUT, FOLD IT AND DROP IT IN THE MAIL!

FROM: (YOUR UNIT'S COMPLETE ADDRESS)

Commander
Stateside Army Depot
ATTN: AMSTA-US
Stateside, N.J. 07703

DATE 10 July 1975

PUBLICATION NUMBER

TM 11-5840-340-12

DATE

23 Jan 74

TITLE

Radar Set AN/PSC-76

BE EXACT...PIN-POINT WHERE IT IS

IN THIS SPACE TELL WHAT IS WRONG AND WHAT SHOULD BE DONE ABOUT IT:

| PAGE NO. | PARA-GRAPH | FIGURE NO. | TABLE NO. |
|----------|------------|------------|-----------|
| 2-25 | 2-28 | | |
| 3-10 | 3-3 | | 3-1 |
| 5-6 | 5-8 | | |
| | | FO3 | |

Recommend that the installation antenna alignment procedure be changed throughout to specify a 2° IFF antenna lag rather than 1°.

REASON: Experience has shown that with only a 1° lag, the antenna servo system is too sensitive to wind gusting in excess of 25 knots, and has a tendency to rapidly accelerate and decelerate as it hunts, causing strain to the drive train. Hunting is minimized by adjusting the lag to 2° without degradation of operation.

Item 5, Function column. Change "2 db" to "3db."

REASON: The adjustment procedure for the TRANS POWER FAULT indicator calls for a 3 db (500 watts) adjustment to light the TRANS POWER FAULT indicator.

Add new step f.1 to read, "Replace cover plate removed in step e.1, above."

REASON: To replace the cover plate.

Zone C 3. On J1-2, change "+24 VDC to "+5 VDC."

REASON: This is the output line of the 5 VDC power supply. + 24 VDC is the input voltage.

TYPED NAME, GRADE OR TITLE, AND TELEPHONE NUMBER

SSG I. M. DeSpirito 999-1776

SIGN HERE:

SSG I. M. DeSpirito

DA FORM 2028-2 (TEST)

AUG 74

P.S.--IF YOUR OUTFIT WANTS TO KNOW ABOUT YOUR MANUAL "FIND" MAKE A CARBON COPY OF THIS AND GIVE IT TO YOUR HEADQUARTERS.

HISA 1686-75



SOMETHING WRONG WITH THIS MANUAL?

THEN... JOT DOWN THE DOPE ABOUT IT ON THIS FORM, TEAR IT OUT, FOLD IT AND DROP IT IN THE MAIL!

FROM: (YOUR UNIT'S COMPLETE ADDRESS)

DATE

PUBLICATION NUMBER

DATE

TITLE

BE EXACT... PIN-POINT WHERE IT IS

IN THIS SPACE TELL WHAT IS WRONG AND WHAT SHOULD BE DONE ABOUT IT:

PAGE
NO.

PARA-
GRAPH

FIGURE
NO.

TABLE
NO.

TEAR ALONG DOTTED LINE

TYPED NAME, GRADE OR TITLE, AND TELEPHONE NUMBER

SIGN HERE:

DA FORM 2028-2 (TEST)

1 AUG 74

P.S.--IF YOUR OUTFIT WANTS TO KNOW ABOUT YOUR MANUAL "FIND," MAKE A CARBON COPY OF THIS AND GIVE IT TO YOUR HEADQUARTERS.

FILL IN YOUR
UNIT'S ADDRESS

FOLD BACK

DEPARTMENT OF THE ARMY

OFFICIAL BUSINESS

Commander
US Army Electronics Command
ATTN: DRSEL-MA-Q
Port Monmouth, New Jersey 07703

CUT ALONG DOTTED LINE

FOLD BACK

REVERSE OF DA FORM 2025-2 (TEST)



SOMETHING WRONG WITH THIS MANUAL?

THEN... JOT DOWN THE DOPE ABOUT IT ON THIS FORM, TEAR IT OUT, FOLD IT AND DROP IT IN THE MAIL!

FROM: (YOUR UNIT'S COMPLETE ADDRESS)

DATE

PUBLICATION NUMBER

DATE

TITLE

BE EXACT... PIN-POINT WHERE IT IS

IN THIS SPACE TELL WHAT IS WRONG AND WHAT SHOULD BE DONE ABOUT IT:

PAGE
NO.

PARA-
GRAPH

FIGURE
NO.

TABLE
NO.

TEAR ALONG DOTTED LINE

TYPED NAME, GRADE OR TITLE, AND TELEPHONE NUMBER

SIGN HERE:

DA FORM 2028-2 (TEST)

1 AUG 74

P.S.--IF YOUR OUTFIT WANTS TO KNOW ABOUT YOUR MANUAL "FIND" MAKE A CARBON COPY OF THIS AND GIVE IT TO YOUR HEADQUARTERS.

FILL IN YOUR
UNIT'S ADDRESS

FOLD BACK

DEPARTMENT OF THE ARMY

OFFICIAL BUSINESS

Commander
US Army Electronics Command
ATTN: DRSEL-MA-Q
Port Monmouth, New Jersey 07703

CUT ALONG DOTTED LINE

FOLD BACK

REVERSE OF DA FORM 2020-2 (TEST)



SOMETHING WRONG WITH THIS MANUAL?

THEN...JOT DOWN THE
DOPE ABOUT IT ON THIS
FORM, TEAR IT OUT, FOLD
IT AND DROP IT IN THE
MAIL!

FROM: (YOUR UNIT'S COMPLETE ADDRESS)

DATE

PUBLICATION NUMBER

DATE

TITLE

BE EXACT...PIN-POINT WHERE IT IS

IN THIS SPACE TELL WHAT IS WRONG
AND WHAT SHOULD BE DONE ABOUT IT:

PAGE
NO.

PARA-
GRAPH

FIGURE
NO.

TABLE
NO.

TEAR ALONG DOTTED LINE

TYPED NAME, GRADE OR TITLE, AND TELEPHONE NUMBER

SIGN HERE:

DA FORM 2028-2 (TEST)

1 AUG 74

P.S.--IF YOUR OUTFIT WANTS TO KNOW ABOUT YOUR MANUAL "FIND," MAKE
A CARBON COPY OF THIS AND GIVE IT TO YOUR HEADQUARTERS.

FILL IN YOUR
UNIT'S ADDRESS

FOLD BACK

DEPARTMENT OF THE ARMY

OFFICIAL BUSINESS

Commander
US Army Electronics Command
ATTN: DRSEL-MA-Q
Fort Monmouth, New Jersey 07703

CUT ALONG DOTTED LINE

FOLD BACK

REVERSE OF DA FORM 2026-2 (TEST)

By Order of the Secretary of the Army:

FRED C. WEYAND
General, United States Army
Chief of Staff

Official:

PAUL T. SMITH
Major General, United States Army
The Adjutant General

DISTRIBUTION:

Active Army

USASA (2)
COE (1)
TSG (1)
USAARENBD (1)
DARCOM (1)
TRADOC (2)
OS Maj Comd (4)
LOGCOMDS (3)
MICOM (2)
TECOM (2)
USACC (4)
MDW (1)
Armies (2)
Corps (2)
HISA (Ft Monmouth) (33)
Svc Colleges (1)
USASESS (5)
USAADS (2)
USAFAS (2)

USAARMS (2)
USAIS (2)
USAES (2)
USAICS (3)
MAAG (1)
USARMIS (1)
Instl (2) except
Fort Gillem (10)
Fort Gordon (10)
Fort Huachuca (10)
Fort Carson (5)
Ft Richardson (ECOM) (2)
LBAD (14)
SAAD (30)
TOAD (14)
SHAD (3)
Sig FLDMS (1)
USAERDAA (1)
USAERDAW (1)

NG: None

USAR: None

For explanation of abbreviations used, see AR 310-50.

☆ U. S. GOVERNMENT PRINTING OFFICE : 1993 - 342-421 (81306)

Free Manuals Download Website

<http://myh66.com>

<http://usermanuals.us>

<http://www.somanuals.com>

<http://www.4manuals.cc>

<http://www.manual-lib.com>

<http://www.404manual.com>

<http://www.luxmanual.com>

<http://aubethermostatmanual.com>

Golf course search by state

<http://golfingnear.com>

Email search by domain

<http://emailbydomain.com>

Auto manuals search

<http://auto.somanuals.com>

TV manuals search

<http://tv.somanuals.com>