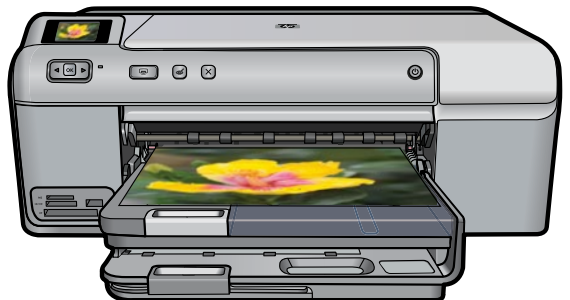


HP Photosmart D5400 series



Basics Guide



Hewlett-Packard Company notices

The information contained in this document is subject to change without notice.

All rights reserved. Reproduction, adaptation, or translation of this material is prohibited without prior written permission of Hewlett-Packard, except as allowed under copyright laws. The only warranties for HP products and services are set forth in the express warranty statements accompanying such products and services. Nothing herein should be construed as constituting an additional warranty. HP shall not be liable for technical or editorial errors or omissions contained herein.

© 2007 Hewlett-Packard Development Company, L.P.

Windows, Windows 2000, and Windows XP are U.S. registered trademarks of Microsoft Corporation.

Windows Vista is either a registered trademark or trademark of Microsoft Corporation in the United States and/or other countries.


Intel and Pentium are trademarks or registered trademarks of Intel Corporation or its subsidiaries in the United States and other countries.

Contents

1 HP Photosmart overview	
The HP Photosmart at a glance.....	2
Control panel features.....	3
Find more information.....	4
Load paper.....	4
Avoid paper jams.....	7
Print directly onto a CD/DVD.....	7
Print a photo on photo paper.....	9
Replace the ink cartridges.....	10
2 Troubleshooting and support	
Uninstall and reinstall the software.....	13
Hardware setup troubleshooting.....	14
Clear paper jams.....	15
CD/DVD print troubleshooting.....	16
Information on ink cartridges and the print head.....	19
Support process.....	20
3 Technical information	
System requirements.....	21
Product specifications.....	21
Regulatory notices.....	21
Warranty.....	22

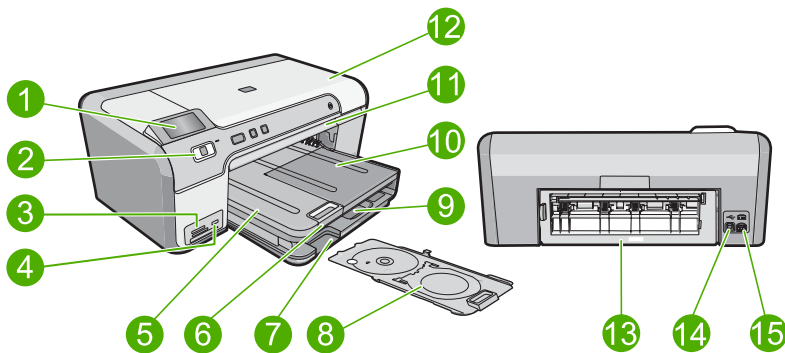
1 HP Photosmart overview

Use the HP Photosmart to print photos from a memory card or print directly on the surface of specially coated CDs and DVDs. You can access many HP Photosmart functions directly from the control panel, without turning on your computer.

 **NOTE:** This guide introduces basic operations and troubleshooting, as well as provides information for contacting HP support and ordering supplies.

The onscreen Help details the full range of features and functions, including use of the HP Photosmart Software that came with the HP Photosmart.

The HP Photosmart at a glance



Label	Description
1	Color graphics display (also referred to as the display)
2	Control panel
3	Memory card slots and Photo light
4	Front USB port
5	Output tray
6	Paper tray extender (also referred to as the tray extender)
7	CD/DVD holder storage area
8	CD/DVD holder
9	Main input tray (also referred to as the input tray)
10	Photo tray
11	CD/DVD tray
12	Ink cartridge access door
13	Back panel
14	Back panel
15	Back panel

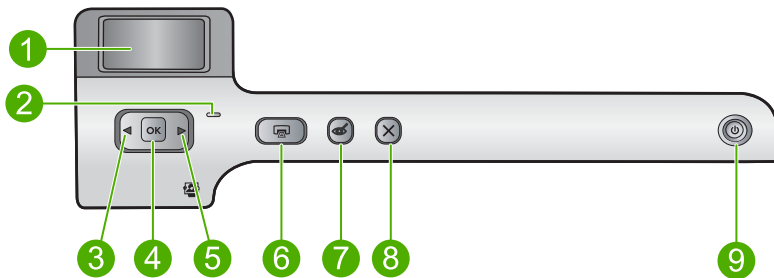
(continued)

Label	Description
13	Rear door
14	Rear USB port
15	Power connection*

* Use only with the power adapter supplied by HP.

Control panel features

The following diagram and related table provide a quick reference to the HP Photosmart control panel features.



Label	Icon	Name and Description
1		Color graphics display (also referred to as the display): Shows photos on a memory card. Also shows status and error messages.
2		Attention light: Indicates a problem occurred. See the display for more information.
3		Left arrow: The left arrow button returns to the previous display screen or photo on the memory card.
4	OK	OK: Selects a photo for printing or selects a menu option.
5		Right arrow: The right arrow button advances to the next display screen or photo on the memory card.
6		Print Photos: Prints the photos selected on your memory card. If no photos are currently selected, the product prints the photo currently showing on the display.
7		Red-Eye Removal: Turns the Red-Eye Removal feature On or Off. This feature turns on when a memory card is inserted. The product automatically corrects red-eye coloring in the photo currently shown on the display.
8		Cancel: Stops the current operation and returns to the main screen.
9		On: Turns the product on or off. When the product is off, a minimal amount of power is still used. To completely remove power, turn off the product, and then unplug the power cord.

Find more information

A variety of resources, both printed and onscreen, provide information about setting up and using the HP Photosmart.

Setup Guide

The Setup Guide provides instructions for setting up your HP Photosmart and installing software. Make sure you follow the steps in the Setup Guide in order.

If you have problems during setup, see Troubleshooting in the last section of the Setup Guide, or see [“Troubleshooting and support”](#) on page 13 in this guide.

Onscreen Help

The onscreen Help provides detailed instructions on features of your HP Photosmart that are not described in this guide, including features that are only available using the software you installed with your HP Photosmart. The onscreen Help also provides regulatory and environmental information.

To access the onscreen Help

- **Windows:** Click **Start > All Programs > HP > Photosmart D5400 series > Help**. To install the onscreen Help, insert the software CD in your computer and follow the onscreen instructions.
- **Macintosh:** Click **Help > Mac Help > Library > HP Product Help**.

HP Web site

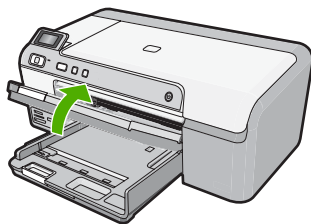
If you have Internet access, you can get help and support from the HP Web site at www.hp.com/support. This Web site offers technical support, drivers, supplies, and ordering information.

Load paper

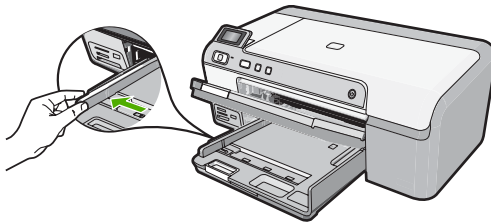
You can load many different types and sizes of paper in the HP Photosmart, including letter or A4 paper, photo paper, transparencies, and envelopes. For more information, see the onscreen Help.

To load full-size paper

1. Raise the output tray to load paper into the main input tray.

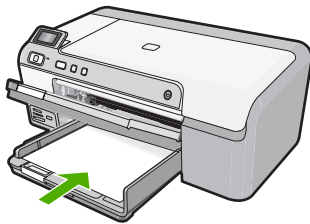


2. Slide the paper-width guide to its outermost position.



TIP: Tap a stack of paper on a flat surface to align the edges. Make sure all the paper in the stack is the same size and type and free of rips, dust, wrinkles, and curled or bent edges.

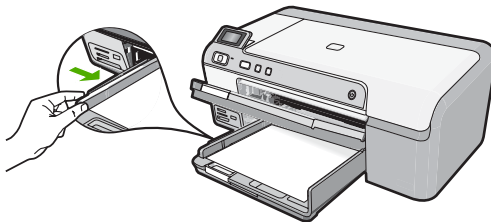
3. Insert the stack of paper into the main input tray with the short edge forward and the print side down. Slide the stack of paper forward until it stops.



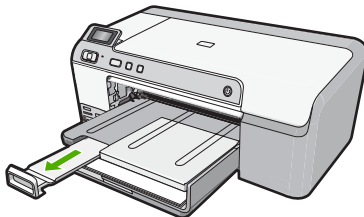
CAUTION: Make sure that the product is idle and silent when you load paper into the main input tray. If the product is servicing the ink cartridges or otherwise engaged in a task, the paper stop inside the product might not be in place. You could push the paper too far forward, causing the product to eject blank pages.

TIP: If you are using letterhead, insert the top of the page first with the print side down.

4. Slide the paper-width guide inward until it stops at the edge of the paper. Do not overload the main input tray; make sure the stack of paper fits within the main input tray and is no higher than the top of the paper-width guide.



5. Lower the output tray. Pull the tray extender towards you, as far as it will go. Flip the paper catch at the end of the tray extender to open the extender the rest of the way.

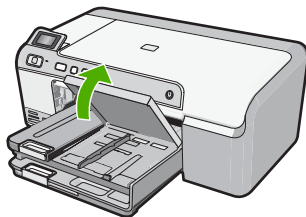




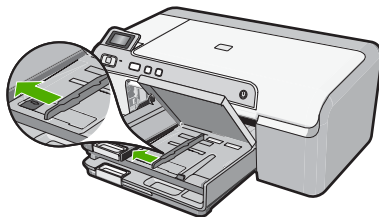
NOTE: When you use legal-size paper, leave the tray extender closed.

To load up to 13 x 18 cm (5 x 7 inch) photo paper in the photo tray

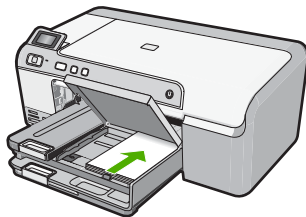
1. Raise the photo tray lid to load photo paper in the photo tray.



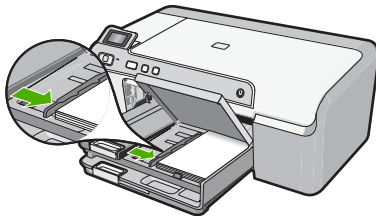
2. Slide the paper-width guide to its outermost position.



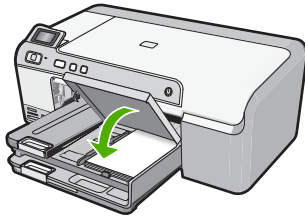
3. Insert the stack of photo paper into the photo tray with the short edge forward and the print side down. Slide the stack of photo paper forward until it stops. If the photo paper you are using has perforated tabs, load the photo paper so that the tabs are closest to you.



4. Slide the paper-width guide inward until it stops at the edge of the paper. Do not overload the photo tray; make sure the stack of photo paper fits within the photo tray and is no higher than the top of the paper-width guide.



5. Lower the photo tray lid.



Avoid paper jams

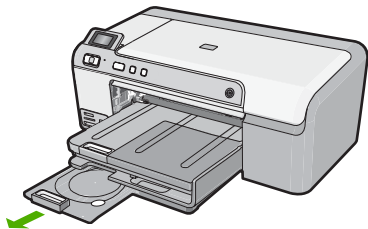
To help avoid paper jams, follow these guidelines.

- Remove printed papers from the output tray frequently.
- Prevent curled or wrinkled photo paper by storing all unused photo paper flat in a resealable bag.
- Ensure that paper loaded in the input tray lays flat and the edges are not bent or torn.
- If you are printing labels, ensure that the label sheets are no more than two years old. Labels on older sheets might peel off when the paper is pulled through the product, and cause paper jams.
- Do not combine different paper types and paper sizes in the input tray; the entire stack of paper in the input tray must be the same size and type.
- Adjust the paper-width guide in the input tray to fit snugly against all paper. Make sure the paper-width guide does not bend the paper in the input tray.
- Do not force paper too far forward in the input tray.
- Use paper types that are recommended for the product.

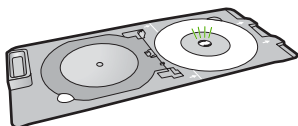
Print directly onto a CD/DVD

You can design and create a custom label for your CD or DVD using the software that came with the HP Photosmart. You can then print the label directly onto your printable CD or DVD media.

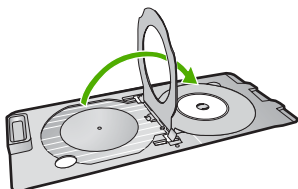
1. Use the software that came with the product to create a label and print it directly on an inkjet printable CD/DVD.
2. When prompted, carefully remove the CD/DVD holder that came with the product. The CD/DVD holder is stored below the main input tray.



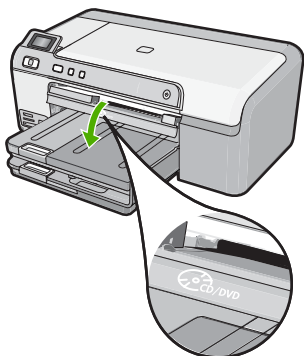
- 3. Securely snap the inkjet printable media onto the CD/DVD holder with the printable side up. The CD/DVD should be placed on the ring at the end of the holder with the arrows.



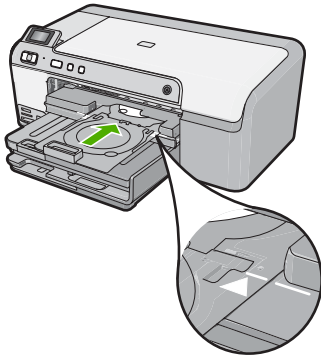
NOTE: If you are using a smaller-sized media, only then should you flip the CD/DVD holder ring over the CD/DVD.



- 4. Lower the CD/DVD access door to access the CD/DVD tray. The CD/DVD access door is located just below the control panel. When in its lowered position, the CD/DVD tray sits on top of the output tray.



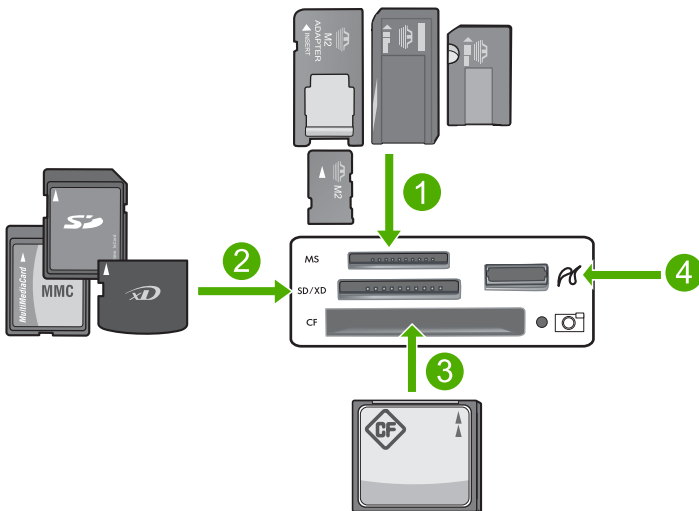
5. Push the CD/DVD holder into the product CD/DVD tray. Make sure that you push the CD/DVD holder until the lines on the CD/DVD holder line up to the white lines on the CD/DVD tray.



NOTE: The product pulls the CD/DVD holder while printing on the media. The CD/DVD holder might protrude about 7.5 cm (3 inches) at the back of the product. If the product is placed close to a wall, move it at least 3 inches away from the wall.

Print a photo on photo paper

To achieve the best print quality, HP recommends using HP papers that are specifically designed for the type of project you are printing along with genuine HP ink. HP papers and HP ink are specifically designed to work well together to provide high-quality output.




- 1 Memory Stick, Memory Stick Pro, Memory Stick Select, Memory Stick Magic Gate, Memory Stick Duo or Duo Pro (adapter optional), or Memory Stick Micro (adapter required)


2	xD-Picture Card, Secure Digital (SD), Secure Digital Mini (adapter required), Secure Digital High Capacity (SDHC), MultiMediaCard (MMC), MMC Plus, MMC Mobile (RS-MMC; adapter required), TransFlash MicroSD Card, or Secure MultiMedia Card
3	CompactFlash (CF) types I and II
4	Front USB port (for storage devices)

To print your photos

1. Load up to 13 x 18 cm (5 x 7 inch) paper in the photo tray or full-size photo paper in the main input tray.
2. Insert a memory card into the appropriate slot on the product, or connect a storage device to the front USB port.
3. Press the left arrow or right arrow buttons to scroll through your photos until the photo you want to print appears.
4. Press **OK** to select the photo you want to print.
Each time you press **OK**, you increment the number of copies of the selected photo to be printed.


 **TIP:** You can repeat steps 3 and 4 to add photos to the print queue.

5. Press **Print Photos**.
6. Press the left arrow or right arrow to scroll through the layout options, and press **OK** when the option you want is highlighted:


 **TIP:** While the photo is printing, you can continue scrolling through the photos on your memory card. When you see a photo you want to print, you can press the **Print Photos** button to add that photo to the print queue.

Replace the ink cartridges

Follow these instructions when you need to replace ink cartridges.

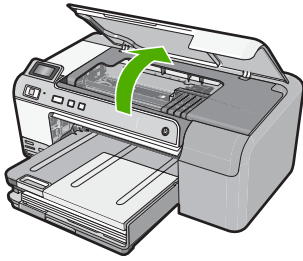
 **NOTE:** If you are setting up the product for the first time, make sure you follow the instructions in the Setup Guide for installing the print head and the ink cartridges.

If you do not already have replacement ink cartridges for the HP Photosmart, to order cartridges, go to www.hp.com/buy/supplies. If prompted, choose your country/region, follow the prompts to select your product, and then click one of the shopping links on the page.

 **CAUTION:** Wait until you have a new ink cartridge available before removing the old ink cartridge. Do not leave the ink cartridge outside of the product for an extended period of time. This can result in damage to both the product and the ink cartridge.

To replace the ink cartridges

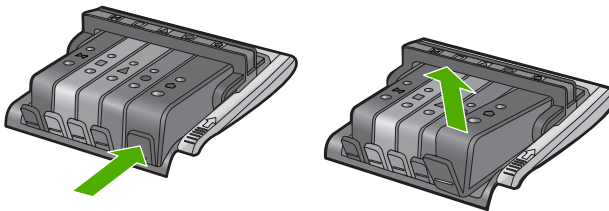
1. Make sure the product is turned on.
2. Open the ink cartridge access door by lifting from the front right of the product, until the door locks into place.




The print carriage moves to the center of the product.

 **NOTE:** Wait until the print carriage stops moving before proceeding.

3. Press the tab on the front of the ink cartridge to release it, and then remove it from the slot.
If you are replacing the black ink cartridge, push the tab of the ink cartridge on the far right.
If you are replacing one of the other ink cartridges, such as photo black, magenta, cyan, or yellow, push the tab on the appropriate ink cartridge to remove it.

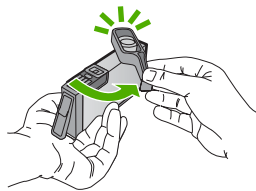


4. Remove the new ink cartridge from its packaging by pulling the orange pull-tab straight back to remove the plastic wrap from the ink cartridge.

 **NOTE:** Make sure you remove the plastic wrap from the ink cartridge before installing it in the product, or printing will fail.



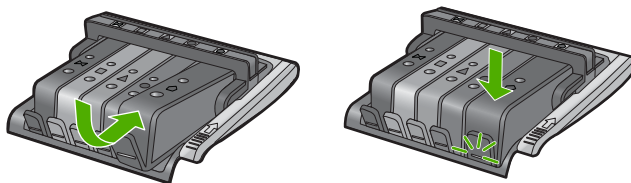
5. Twist the orange cap to snap it off.



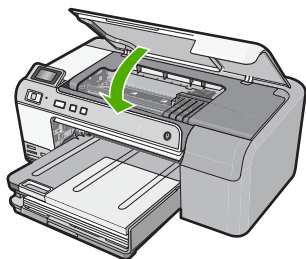
6. Using the colored shaped icons for help, slide the ink cartridge into the empty slot until it clicks into place and is seated firmly in the slot.

△ **CAUTION:** Do not lift the latch handle on the print carriage to install the ink cartridges. Doing so can result in incorrectly seated ink cartridges and printing problems. The latch must remain down in order to correctly install the ink cartridges.

Make sure that you insert the ink cartridge into the slot that has the same shaped icon and color as the one you are installing.



7. Repeat steps 3 through 6 for each ink cartridge you are replacing.
8. Close the ink cartridge access door.




2 Troubleshooting and support

This chapter contains troubleshooting information for the HP Photosmart. Specific information is provided for installation and configuration issues, and some operational topics. For more troubleshooting information, see the onscreen Help that came with your software.

Many issues are caused when the HP Photosmart is connected to the computer using a USB cable before the HP Photosmart software is installed on the computer. If you connected the HP Photosmart to your computer before the software installation screen prompts you to do so, you must follow these steps:

Troubleshooting common setup issues

1. Disconnect the USB cable from the computer.
2. Uninstall the software (if you have already installed it).
3. Restart your computer.
4. Turn off the HP Photosmart, wait one minute, then restart it.
5. Reinstall the HP Photosmart software.

 **CAUTION:** Do not connect the USB cable to the computer until prompted by the software installation screen.


For support contact information, see the inside back cover of this guide.

Uninstall and reinstall the software


If your installation is incomplete, or if you connected the USB cable to the computer before prompted by the software installation screen, you might need to uninstall and then reinstall the software. Do not simply delete the HP Photosmart application files from your computer. Make sure to remove them properly using the uninstall utility provided when you installed the software that came with the HP Photosmart.

To uninstall and reinstall the software

1. On the Windows taskbar, click **Start, Settings, Control Panel** (or just **Control Panel**).
2. Double-click **Add/Remove Programs** (or click **Uninstall a program**).
3. Select **HP Photosmart All-in-One Driver Software**, and then click **Change/Remove**. Follow the onscreen instructions.
4. Disconnect the product from your computer.
5. Restart your computer.

 **NOTE:** It is important that you disconnect the product before restarting your computer. Do not connect the product to your computer until after you have reinstalled the software.

6. Insert the product CD-ROM into your computer's CD-ROM drive and then start the Setup program.

 **NOTE:** If the Setup program does not appear, locate the setup.exe file on the CD-ROM drive and double-click it.

NOTE: If you no longer have the installation CD, you can download the software from www.hp.com/support.

7. Follow the onscreen instructions and the instructions provided in the Setup Guide that came with the product.

When the software installation is complete, the **HP Digital Imaging Monitor** icon appears in the Windows system tray.

Hardware setup troubleshooting

Use this section to solve any problems you might encounter while setting up the HP Photosmart hardware.

The product will not turn on

Try the following solutions if there are no light indications, no noise, and no movement from the product when you turn it on.

Solution 1: Make sure you use the power cord that came with the product

Solution

- Make sure the power cord is firmly connected to both the product and the power adapter. Plug the power cord into a power outlet, surge protector, or power strip.
- If you are using a power strip, make sure the power strip is turned on. Or, try plugging the product directly into a power outlet.
- Test the power outlet to make sure it is working. Plug in an appliance that you know works, and see if the appliance has power. If not, then there might be a problem with the power outlet.
- If you plugged the product into a switched outlet, make sure the outlet is switched on. If it is switched to on but still does not work, then there might be a problem with the power outlet.

Cause: The product was not being used with the power cord provided.

If this did not solve the issue, try the next solution.

Solution 2: Reset the product

Solution: Turn off the product, and then unplug the power cord. Plug the power cord back in, and then press the **On** button to turn on the product.

Cause: The product experienced an error.

If this did not solve the issue, try the next solution.

Solution 3: Press the On button more slowly

Solution: The product might not respond if you press the **On** button too quickly. Press the **On** button once. It might take a few minutes for the product to turn on. If you press the **On** button again during this time, you might turn the product off.

Cause: You pressed the **On** button too quickly.

If this did not solve the issue, try the next solution.

Solution 4: Contact HP to replace the power supply

Solution: Contact HP support to request a power supply for the product.

Go to: www.hp.com/support.

If prompted, choose your country/region, and then click **Contact HP** for information on calling for technical support.

Cause: The power supply was not intended for use with this product or it had a mechanical failure.

If this did not solve the issue, try the next solution.

Solution 5: Contact HP support for service

Solution: If you have completed all of the steps provided in the previous solutions and are still having a problem, contact HP support for service.

Go to: www.hp.com/support.

If prompted, choose your country/region, and then click **Contact HP** for technical support.

Cause: You might need assistance to enable the product or software to function properly.

I connected the USB cable, but I am having problems using the product with my computer

Solution: You must first install the software that came with the product before connecting the USB cable. During installation, do not plug in the USB cable until prompted by the onscreen instructions.

Once you have installed the software, plug one end of the USB cable into the back of your computer and the other into the back of the product. You can connect to any USB port on the back of your computer.

For more information on installing the software and connecting the USB cable, see the Setup Guide that came with the product.

Cause: The USB cable was connected before the software was installed. Connecting the USB cable before you are prompted can cause errors.

After setting up the product, it does not print

Try the following solutions to resolve the issue. Solutions are listed in order, with the most likely solution first. If the first solution does not solve the problem, continue trying the remaining solutions until the issue is resolved.

Solution 1: Press the On button to turn on the product

Solution: Look at the display on the product. If the display is blank and the **On** button is not lit, the product is turned off. Make sure the power cord is firmly connected to the product and plugged into a power outlet. Press the **On** button to turn on the product.

Cause: The product might not have been turned on.
If this did not solve the issue, try the next solution.

Solution 2: Set your product as the default printer

Solution: Use the system tools on your computer to change your product to be the default printer.

Cause: You sent the print job to the default printer, but this product was not the default printer.
If this did not solve the issue, try the next solution.

Solution 3: Check the connection between the product and computer

Solution: Check the connection between the product and computer.

Cause: The product and computer were not communicating with each other.
If this did not solve the issue, try the next solution.

Solution 4: Check that the ink cartridges are installed properly and have ink

Solution: Check that the ink cartridges are installed properly and have ink.

Cause: There might have been a problem with one or more of the ink cartridges.
If this did not solve the issue, try the next solution.

Solution 5: Load paper in the input tray

Solution: Load paper in the input tray.

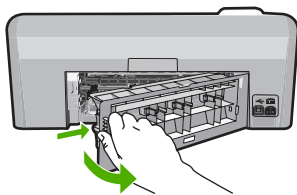
Cause: The product might have been out of paper.

Clear paper jams

In case of a paper jam, check the rear door. You might need to clear the paper jam from the rear door.

To clear a paper jam from the rear door

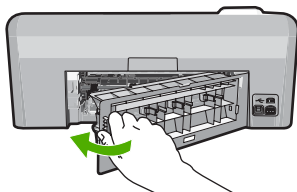
1. Press in the tab on the left side of the rear door to release the door. Remove the door by pulling it away from the product.



2. Gently pull the paper out of the rollers.

△ **CAUTION:** If the paper tears when you are removing it from the rollers, check the rollers and wheels for torn pieces of paper that might be remaining inside the product. If you do not remove all the pieces of paper from the product, more paper jams are likely to occur.

3. Replace the rear door. Gently push the door forward until it snaps into place.



4. Press **OK** on the control panel to continue the current job.

CD/DVD print troubleshooting

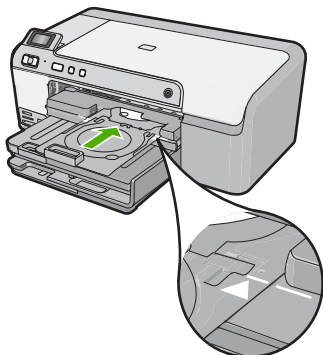
Use this section to solve any problems you might encounter while printing on CD/DVD surfaces with the HP Photosmart.

The product does not detect the CD/DVD holder

Try the following solutions to resolve the issue. Solutions are listed in order, with the most likely solution first. If the first solution does not solve the problem, continue trying the remaining solutions until the issue is resolved.

Solution 1: Push the CD/DVD holder into the CD/DVD tray

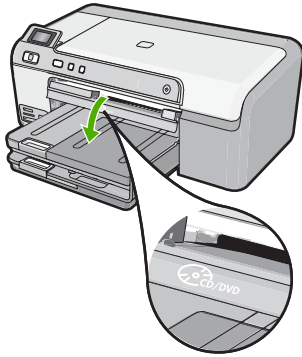
Solution: Push the CD/DVD holder forward into the CD/DVD tray until the lines on the holder line up to the white lines on the tray. The end of the holder marked with arrows goes into the CD/DVD tray first.



Cause: You did not push the CD/DVD holder far enough into the CD/DVD tray. If this did not solve the issue, try the next solution.

Solution 2: Remove the CD/DVD holder from the storage area

Solution: Remove the CD/DVD holder from the storage area below the main input tray. Lower the CD/DVD tray (located below the control panel).



Make sure you loaded a printable disc onto the CD/DVD holder with the printable side up. Push the CD/DVD holder forward into the CD/DVD tray until the lines on the holder line up to the white lines on the tray. The end of the holder marked with arrows goes into the CD/DVD tray first.

Cause: You inserted the CD/DVD holder back into the storage area. If this did not solve the issue, try the next solution.

Solution 3: Place the CD/DVD on the CD/DVD holder

Solution: Remove the CD/DVD holder from the storage area below the main input tray. Remove the printable disc from the CD/DVD tray and load it onto the CD/DVD holder with the printable side up. Push the holder forward into the CD/DVD tray until the lines on the holder line up to the white lines on the tray. The end of the holder marked with arrows goes into the CD/DVD tray first.

Cause: You inserted the disc directly into the CD/DVD tray without placing it on the CD/DVD holder.

If this did not solve the issue, try the next solution.

Solution 4: Load the next disc on the CD/DVD holder

Solution: Remove the CD/DVD holder from the CD/DVD tray. Remove the printed CD/DVD from the holder. Load the next disc onto the CD/DVD holder with the printable side up and reinsert the holder into the CD/DVD tray until the lines on the holder line up to the white lines on the tray. When the product detects the holder, the prompt disappears.

Cause: The product prompted you to insert the next disc when printing multiple CD/DVDs in a print job.

The product does not detect a CD/DVD on the holder

Solution: Remove the CD/DVD holder from the CD/DVD tray. Load a printable disc onto the CD/DVD holder with the printable side up and reinsert the holder into the CD/DVD tray until the lines on the holder line up to the white lines on the tray.

Cause: You inserted the CD/DVD holder into the CD/DVD tray without loading a CD/DVD onto the holder.

The product stalled while printing a CD/DVD

Solution: Ensure that there is at least 7.5 cm (3 inches) of space behind the product. Also, make sure that the slot on the back of the product is not blocked.

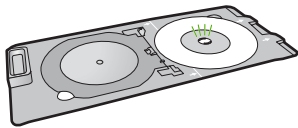
Cause: The product pulled the CD/DVD holder while printing on the CD/DVD. The holder can protrude about 7.5 cm (3 inches) from the back of the product. If there is not sufficient space behind the product, the holder stops and printing stalls.

The image on my printed disc is cropped and there is ink on the CD/DVD holder

Solution: If you are loading a regular-size (120 mm) CD/DVD onto the CD/DVD holder to be printed, **do not** flip the blue ring over the disc. The blue ring should only be used if you are printing on a small-size (80 mm) CD/DVD.

Before trying again, clean the CD/DVD holder to remove ink from the holder. This avoids ink contamination within the product, as well as protects your discs, hands, and clothing from stains later.

After the CD/DVD holder is clean and dry, load a new printable disc onto the holder with the printable side up. Leave the blue ring in its original location on the opposite side of the holder from your disc, as shown below. Reinsert the holder into the CD/DVD tray until the lines on the holder line up to the white lines on the tray and try your print again.



Cause: You loaded the CD/DVD onto the CD/DVD holder incorrectly.

The product is printing on a non-printable area of my disc

Try the following solutions to resolve the issue. Solutions are listed in order, with the most likely solution first. If the first solution does not solve the problem, continue trying the remaining solutions until the issue is resolved.

Solution 1: Change the software settings

Solution: Make sure the design you are printing is appropriate for the size of the media loaded in the CD/DVD holder, including the diameter of the inner and outer rings. Change the software settings accordingly to center and size your design for the disc you are using. Refer to the documentation or the online help of the software you are using for additional information.

Cause: Your design was not the correct size for the CD/DVD you loaded.

If this did not solve the issue, try the next solution.

Solution 2: Load a new CD/DVD with the printable side up

Solution: If you have already burned your content onto the CD/DVD, you might need to burn your contents again onto a new disc. Load the new disc onto the CD/DVD holder with the printable side up. Reinsert the holder into the CD/DVD tray until the lines on the holder line up to the white lines on the tray and try your print again.

Cause: You loaded the CD/DVD upside down on the holder.

The design is not centered on my disc

Solution: Change the software settings to center and size your design for the disc you are using. Refer to the documentation or the online help of the software you are using for additional information.

Cause: Your design settings were not correct.

The ink on the CD/DVD is not drying

Try the following solutions to resolve the issue. Solutions are listed in order, with the most likely solution first. If the first solution does not solve the problem, continue trying the remaining solutions until the issue is resolved.

Solution 1: Use inkjet printable discs

Solution: Make sure that the CD/DVD you use is compatible for inkjet printing. Inkjet printable discs normally have a white printing surface. (Some discs also have a silver printing surface.)

Cause: The surface of the disc was not compatible for printing.
If this did not solve the issue, try the next solution.

Solution 2: Load a new CD/DVD with the printable side up

Solution: If you have already burned your content onto the CD/DVD, you might need to burn your contents again onto a new disc. Load the new disc onto the CD/DVD holder with the printable side up. Reinsert the holder into the CD/DVD tray until the lines on the holder line up to the white lines on the tray and try your print again.

Cause: You loaded the CD/DVD upside down on the holder.

The product reports a CD/DVD size mismatch error

Solution: Cancel the print job and replace the CD/DVD currently loaded on the CD/DVD holder with a CD/DVD that is the same size as specified in the print job, or change the print settings in the software.

Cause: The size of the CD/DVD currently loaded on the CD/DVD holder did not match the size you specified when you started the print job from the computer.

The CD/DVD holder is stuck in the storage area

Solution: Pull the CD/DVD holder out as far as possible, until you feel resistance. Then, insert a flat blunt object (such as a butter knife or screwdriver) into the left corner of the storage slot and push down on the blue ring. With the blue ring pressed down, you should be able to pull the CD/DVD holder out of the storage slot.

Cause: You inserted the CD/DVD holder back into the storage area with a CD/DVD loaded and the blue ring flipped over the disc.

Information on ink cartridges and the print head

The following tips help maintain HP ink cartridges and ensure consistent print quality.

- Keep all ink cartridges in the original sealed packages until they are needed.
- Turn off the product by pressing the **On** button. Do not turn off the product by turning off a power strip or unplugging the power cord. If you improperly turn off the product, the print head assembly might not return to the correct position.
- Store ink cartridges at room temperature (15.6°-26.6° C or 60°-78° F).
- HP recommends that you do not remove the ink cartridges from the product until you have replacement cartridges available to install.
If you are transporting the product make sure you turn it off by pressing the **On** button to power it down properly. Also, make sure you leave the ink cartridges installed. Doing these actions will prevent ink leaking from the print head assembly.
- Clean the print head when you notice a significant decrease in print quality.

- Do not clean the print head unnecessarily. This wastes ink and shortens the life of the cartridges.
- Handle ink cartridges carefully. Dropping, jarring, or rough handling during installation can cause temporary printing problems.

Support process

If you have a problem, follow these steps:

1. Check the documentation that came with the product.
2. Visit the HP online support Web site at www.hp.com/support. HP online support is available to all HP customers. It is the fastest source for up-to-date device information and expert assistance and includes the following features:
 - Fast access to qualified online support specialists
 - Software and driver updates for the product
 - Valuable product and troubleshooting information for common problems
 - Proactive device updates, support alerts, and HP newsgroups that are available when you register the product
3. Call HP support. Support options and availability vary by device, country/region, and language. For support contact information, see the inside back cover of this guide.

3 Technical information

The technical specifications and international regulatory information for the HP Photosmart are provided in this section.

For additional regulatory and environmental information, including the Declaration of Conformity statement, see the onscreen Help.

System requirements

Software system requirements are located in the Readme file.

Product specifications

For product specifications, go to the HP Web site at www.hp.com/support.

Paper specifications

- Main input tray capacity: Plain paper sheets: Up to 125 (60 to 90 gsm. (20 lb) paper)
- Output tray capacity: Plain paper sheets: Up to 50 (60 to 90 gsm. (20 lb) paper)
- Photo tray capacity: Photo paper sheets: Up to 20



NOTE: For a complete list of supported media sizes, see the printer software.

Physical specifications

- Height: 18.3 cm (7.2 inches)
- Width: 45.8 cm (18.0 inches)
- Depth: 38.5 cm (15.2 inches)
- Weight: 5.8 kg (12.8 pounds)

Power specifications

- Power consumption: 42 watts maximum (average printing)
- Power adapter input rating: AC 100 to 240 V ~ 1300 mA 50–60 Hz
- Printer DC rating: DC 32 V===1300 mA



NOTE: Use only with the power adapter supplied by HP.

Environmental specifications

- Recommended operating temperature range: 15 °C to 32 °C (59 °F to 90 °F)
- Allowable operating temperature range: 5 °C to 35 °C (41 °F to 95 °F)
- Humidity: 15% to 80% RH non-condensing
- Non-operating (Storage) temperature range: –20 °C to 50 °C (–4 °F to 122 °F)
- In the presence of high electromagnetic fields, it is possible the output from the HP Photosmart may be slightly distorted
- HP recommends using a USB cable less than or equal to 3 metres (10 feet) in length to minimize injected noise due to potential high electromagnetic fields

Regulatory notices

The HP Photosmart meets product requirements from regulatory agencies in your country/region. For a complete listing of regulatory notices, see the onscreen Help.

Regulatory model identification number

For regulatory identification purposes, your product is assigned a Regulatory Model Number. The Regulatory Model Number for your product is SDGOB-0821. This regulatory number should not be confused with the marketing name (HP Photosmart D5400 Printer series, etc.) or product numbers (Q8420A, etc.).

Warranty

HP product	Duration of limited warranty
Software Media	90 days
Printer	1 year
Print or Ink cartridges	Until the HP ink is depleted or the "end of warranty" date printed on the cartridge has been reached, whichever occurs first. This warranty does not cover HP ink products that have been refilled, remanufactured, refurbished, misused, or tampered with.
Printheads	1 year

A. Extent of limited warranty

1. Hewlett-Packard (HP) warrants to the end-user customer that the HP products specified above will be free from defects in materials and workmanship for the duration specified above, which duration begins on the date of purchase by the customer.
2. For software products, HP's limited warranty applies only to a failure to execute programming instructions. HP does not warrant that the operation of any product will be interrupted or error free.
3. HP's limited warranty covers only those defects that arise as a result of normal use of the product, and does not cover any other problems, including those that arise as a result of:
 - a. Improper maintenance or modification;
 - b. Software, media, parts, or supplies not provided or supported by HP;
 - c. Operation outside the product's specifications;
 - d. Unauthorized modification or misuse.
4. For HP printer products, the use of a non-HP cartridge or a refilled cartridge does not affect either the warranty to the customer or any HP support contract with the customer. However, if printer failure or damage is attributable to the use of a non-HP or refilled cartridge or an expired ink cartridge, HP will charge its standard time and materials charges to service the printer for the particular failure or damage.
5. If HP receives, during the applicable warranty period, notice of a defect in any product which is covered by HP's warranty, HP shall either repair or replace the product, at HP's option.
6. If HP is unable to repair or replace, as applicable, a defective product which is covered by HP's warranty, HP shall, within a reasonable time after being notified of the defect, refund the purchase price for the product.
7. HP shall have no obligation to repair, replace, or refund until the customer returns the defective product to HP.
8. Any replacement product may be either new or like-new, provided that it has functionality at least equal to that of the product being replaced.
9. HP products may contain remanufactured parts, components, or materials equivalent to new in performance.
10. HP's Limited Warranty Statement is valid in any country where the covered HP product is distributed by HP. Contracts for additional warranty services, such as on-site service, may be available from any authorized HP service facility in countries where the product is distributed by HP or by an authorized importer.

B. Limitations of warranty

TO THE EXTENT ALLOWED BY LOCAL LAW, NEITHER HP NOR ITS THIRD PARTY SUPPLIERS MAKES ANY OTHER WARRANTY OR CONDITION OF ANY KIND, WHETHER EXPRESS OR IMPLIED WARRANTIES OR CONDITIONS OF MERCHANTABILITY, SATISFACTORY QUALITY, AND FITNESS FOR A PARTICULAR PURPOSE.

C. Limitations of liability

1. To the extent allowed by local law, the remedies provided in this Warranty Statement are the customer's sole and exclusive remedies.
2. TO THE EXTENT ALLOWED BY LOCAL LAW, EXCEPT FOR THE OBLIGATIONS SPECIFICALLY SET FORTH IN THIS WARRANTY STATEMENT, IN NO EVENT SHALL HP OR ITS THIRD PARTY SUPPLIERS BE LIABLE FOR DIRECT, INDIRECT, SPECIAL, INCIDENTAL, OR CONSEQUENTIAL DAMAGES, WHETHER BASED ON CONTRACT, TORT, OR ANY OTHER LEGAL THEORY AND WHETHER ADVISED OF THE POSSIBILITY OF SUCH DAMAGES.

D. Local law

1. This Warranty Statement gives the customer specific legal rights. The customer may also have other rights which vary from state to state in the United States, from province to province in Canada, and from country to country elsewhere in the world.
2. To the extent that this Warranty Statement is inconsistent with local law, this Warranty Statement shall be deemed modified to be consistent with such local law. Under such local law, certain disclaimers and limitations of this Warranty Statement may not apply to the customer. For example, some states in the United States, as well as some governments outside the United States (including provinces in Canada), may:
 - a. Preclude the disclaimers and limitations in this Warranty Statement from limiting the statutory rights of a consumer (e.g., the United Kingdom);
 - b. Otherwise restrict the ability of a manufacturer to enforce such disclaimers or limitations; or
 - c. Grant the customer additional warranty rights, specify the duration of implied warranties which the manufacturer cannot disclaim, or allow limitations on the duration of implied warranties.
3. THE TERMS IN THIS WARRANTY STATEMENT, EXCEPT TO THE EXTENT LAWFULLY PERMITTED, DO NOT EXCLUDE, RESTRICT, OR MODIFY, AND ARE IN ADDITION TO, THE MANDATORY STATUTORY RIGHTS APPLICABLE TO THE SALE OF THE HP PRODUCTS TO SUCH CUSTOMERS.

HP Limited Warranty

Dear Customer,

You will find below the name and address of the HP entity responsible for the performance of the HP Limited Warranty in your country.

You may have additional statutory rights against the seller based on your purchase agreement. Those rights are not in any way affected by this HP Limited Warranty.

Ireland: Hewlett-Packard Ireland Ltd, 30 Herbert Street IRL-Dublin 2

United Kingdom: Hewlett-Packard Ltd, Cain Road, Bracknell, GB-Berks RG12 1HN



Africa (English speaking)	+27 11 2345872
Afrique (francophone)	+33 1 4993 9230
021 672 280	الجزائر
Argentina (Buenos Aires)	54-11-4708-1600
Argentina	0-800-555-5000
Australia	1300 721 147
Australia (out-of-warranty)	1902 910 910
Österreich	+43 0820 87 4417
17212049	البحرين
België	+32 070 300 005
Belgique	+32 070 300 004
Brasil (Sao Paulo)	55-11-4004-7751
Brasil	0-800-709-7751
Canada	1-(800)-474-6836 (1-800 hp invent)
Central America & The Caribbean	www.hp.com/support
Chile	800-360-999
中国	1068687980
中国	800-810-3888
Colombia (Bogotá)	571-606-9191
Colombia	01-8000-51-4746-8368
Costa Rica	0-800-011-1046
Česká republika	810 222 222
Danmark	+45 70 202 845
Ecuador (Andinetel)	1-999-119 ☎ 800-711-2884
Ecuador (Pacifitel)	1-800-225-528 ☎ 800-711-2884
(02) 6910602	مصر
El Salvador	800-6160
España	+34 902 010 059
France	+33 0892 69 60 22
Deutschland	+49 01805 652 180
Ελλάδα (από το εξωτερικό)	+ 30 210 6073603
Ελλάδα (εντός Ελλάδας)	801 11 75400
Ελλάδα (από Κύπρο)	800 9 2654
Guatemala	1-800-711-2884
香港特別行政區	(852) 2802 4098
Magyarország	06 40 200 629
India	1-800-425-7737
India	91-80-28526900
Indonesia	+62 (21) 350 3408
+971 4 224 9189	العراق
+971 4 224 9189	الكويت
+971 4 224 9189	لبنان
+971 4 224 9189	قطر
+971 4 224 9189	اليمن
Ireland	+353 1890 923 902
1-700-503-048	ישראל
Italia	+39 848 800 871

Jamaica	1-800-711-2884
日本	+81-3-3335-9800
0800 222 47	الأردن
한국	1588-3003
Luxembourg (Français)	+352 900 40 006
Luxemburg (Deutsch)	+352 900 40 007
Malaysia	1800 88 8588
Mauritius	(262) 262 210 404
México (Ciudad de México)	55-5258-9922
México	01-800-472-68368
081 005 010	المغرب
Nederland	+31 0900 2020 165
New Zealand	0800 441 147
Nigeria	(01) 271 2320
Norge	+47 815 62 070
24791773	عمان
Panamá	1-800-711-2884
Paraguay	009 800 54 1 0006
Perú	0-800-101111
Philippines	2 867 3551
Polska	801 800 235
Portugal	+351 808 201 492
Puerto Rico	1-877-232-0589
República Dominicana	1-800-711-2884
Reunion	0820 890 323
România	0801 033 390
Россия (Москва)	095 777 3284
Россия (Санкт-Петербург)	812 332 4240
800 897 1415	السعودية
Singapore	+65 6272 5300
Slovensko	0850 111 256
South Africa (RSA)	0860 104 771
Suomi	+358 0 203 66 767
Sverige	+46 077 120 4765
Switzerland	+41 0848 672 672
臺灣	02-8722-8000
ໄທ	+66 (2) 353 9000
071 891 391	تونس
Trinidad & Tobago	1-800-711-2884
Türkiye (Istanbul, Ankara, Izmir & Bursa)	444 0307
Україна	(044) 230-51-06
600 54 47 47	المتحدة العربية الإمارات
United Kingdom	+44 0870 010 4320
United States	1-(800)-474-6836
Uruguay	0004-054-177
Venezuela (Caracas)	58-212-278-8666
Venezuela	0-800-474-68368
Việt Nam	+84 88234530

Free Manuals Download Website

<http://myh66.com>

<http://usermanuals.us>

<http://www.somanuals.com>

<http://www.4manuals.cc>

<http://www.manual-lib.com>

<http://www.404manual.com>

<http://www.luxmanual.com>

<http://aubethermostatmanual.com>

Golf course search by state

<http://golfingnear.com>

Email search by domain

<http://emailbydomain.com>

Auto manuals search

<http://auto.somanuals.com>

TV manuals search

<http://tv.somanuals.com>