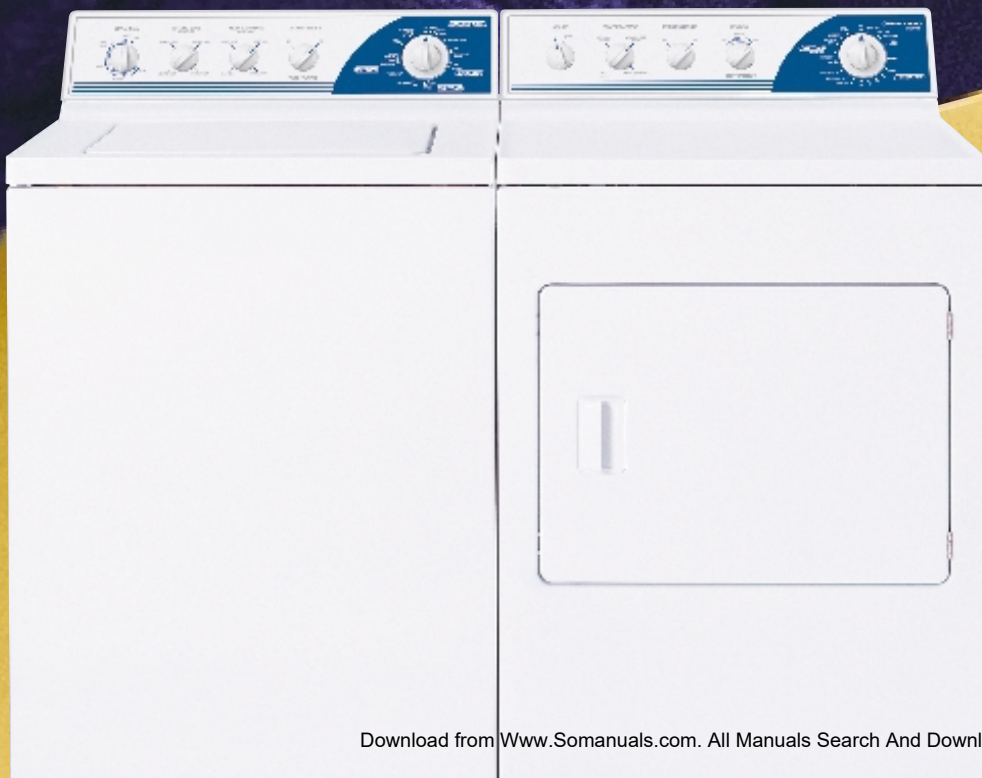


# HOTPOINT®

2 0 0 3 L a u n d r y



**For now. For the long run.**

## Hotpoint Washers

### *An excellent starting point.*

Whether you're a young person just starting out or a retiree settling into a more comfortable home, Hotpoint appliances help you make the best of your new beginning. Hotpoint washers provide the perfect example. With a fresh new look and a number of convenience features, these new washers are appealing additions to any home. The sleek, contemporary graphics make a modern statement, while the super capacity and multiple cycle options make laundry (and life) a lot easier.



#### **Extra Rinse option**

Ideal for those with sensitive skin, this option removes excess detergent residue from fabric fibers.



#### **Automatic presoak cycle**

This option soaks heavily soiled clothes for 15 or 30 minutes, then automatically goes into the cotton wash cycle. No need for a second trip to the washer!



#### **GentlePower™ agitator**

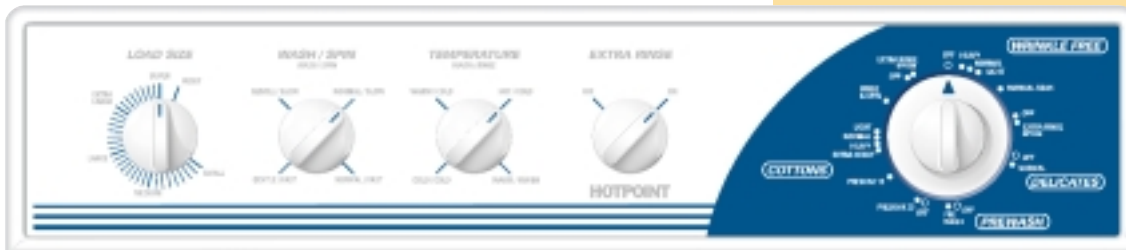
This dual-action agitator maximizes wash performance with a rotating spiral and flexible fins. The upper spiral continually circulates the wash load, pulling clothes from the top and lifting them from the bottom. The bottom fins move back and forth to provide gentle, effective cleaning action.



#### **Delicate cycle**

This extra-care setting uses gentle agitation to protect fine handwashables such as lingerie and sweaters.





VWSR4150D

### VWSR4150D

- 3.2 cu. ft. Super capacity plus washer
- Variable water levels
- 15 cycles
- 4 wash/spin speed combinations
- Extra-Rinse
- Auto presoaks
- GentlePower™ Agitator
- Bleach dispenser
- Fabric softener dispenser



VBRS3100D

### VBRS3100D

- 3.2 cu. ft. Super capacity washer
- 3 water levels
- 10 cycles
- 3 wash/spin speed combinations
- 3 wash/rinse temperature settings
- FlexCare™ Agitator
- Bleach dispenser
- Fabric softener dispenser



VWSR1070D

### VWSR1070D

- 3.2 cu. ft. Super capacity washer
- 3 water levels
- 7 cycles
- 1 wash/spin speed combination
- 3 wash/rinse temperature settings
- FlexCare™ Agitator



VBXR1090D

### VBXR1090D

- 2.7 cu. ft. Extra-large capacity washer
- 3 water levels
- 9 cycles
- 1 wash/spin speed combination
- 3 wash/rinse temperature settings
- FlexCare™ Agitator
- Bleach dispenser

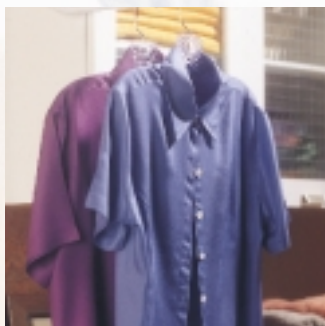


VWSR4150D

## Hotpoint Dryers

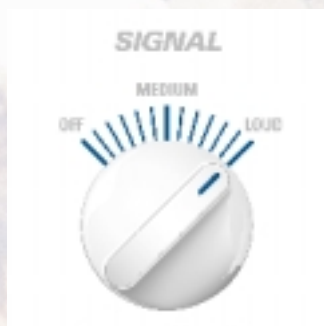
*The ideal solution for the design and value conscious.*

Hotpoint dryers are the perfect complement to your home and your busy lifestyle, providing modern styling and conveniences at a practical price. The dryer console offers an updated look and simple operation, with a distinctive upswept design and large, easy-to-read graphics. Conveniences like the no-heat tumble option and end-of-cycle signal give you more control over laundry results.



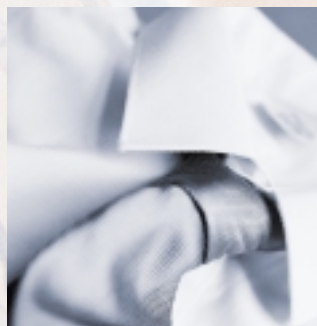
### **Press Guard Wrinkle Care**

This no-heat tumble cycle saves you the trouble of rushing to remove clothes by signaling every five minutes, for up to 20 minutes, after clothes are dry.



### **Variable End-of-cycle signal**

Great when you're busy, this audible signal reminds you when clothes are dry. The signal volume can be adjusted according to your needs, whether your laundry room is next to the nursery or in the basement.



### **Automatic dry control**

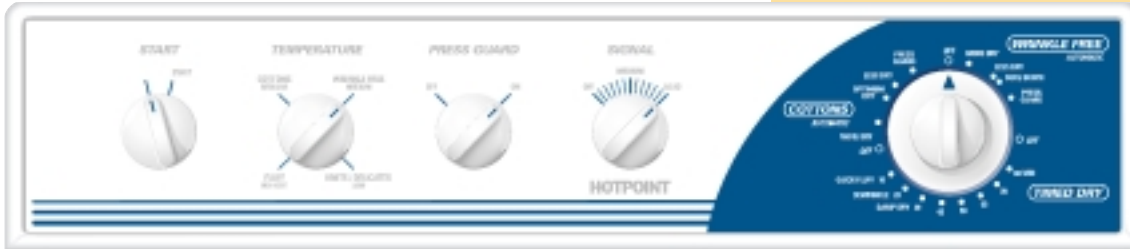
For each load, the dryer monitors the temperature with an automatic thermostat and ends the cycle when clothes are properly dried.



### **Dryer Interior light**

This brilliant light puts small items like socks and washcloths into clear view, making unloading faster and easier.

# Hotpoint Dryers



NWSR483EB (Electric), NWSR483GB (Gas)

- NWSR483EB (Electric)  
NWSR483GB (Gas)**
- 7.0 cu. ft. Super capacity dryer
  - Automatic dry control
  - 8 cycles
  - 4 heat selections
  - Press Guard Wrinkle Care
  - Upfront lint filter
  - Variable end-of-cycle signal
  - Dryer interior light
  - Reversible door



NBXR463EB (Electric), NBXR463GB (Gas)

- NBXR463EB (Electric)  
NBXR463GB (Gas)**
- 6.0 cu. ft. Extra-large capacity dryer
  - Automatic dry control
  - 6 cycles
  - 4 heat selections
  - Upfront lint filter
  - Reversible door



NVL333EB (Electric), NVL333GB (Gas)

- NVL333EB (Electric)  
NVL333GB (Gas)**
- 5.7 cu. ft. Extra-large capacity dryer
  - Automatic dry control
  - 3 cycles
  - 3 heat selections
  - Upfront lint filter
  - Reversible door



NWSR483EB/GB

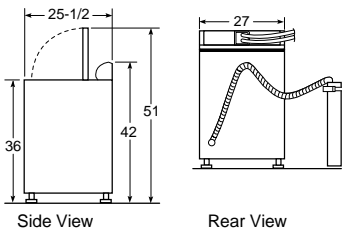


# Washer Specifications

Washers	VWSR4150D	VBSR3100D	VVSR1070D	VBXR1090D
<b>Capacity</b>				
Capacity cu. ft.	3.2 Super	3.2 Super	3.2 Super	2.7 Extra-large
<b>Controls</b>				
Rotary	●	●	●	●
Wash/rinse temps	3	3	3 timer	3
Water levels	Variable	3	3	3
<b>Wash system</b>				
Wash basket	ExtraAction™	ExtraAction™	PermaTuf® II	PermaTuf® II
Wash mechanism	GentlePower™ Agitator	GentlePower™ Agitator	FlexCare™ Agitator	FlexCare™ Agitator
Wash/spin combinations	4	3	1	1
<b>Drive system</b>				
Transmission	Steel	Steel	Steel	Steel
Maximum spin speed	630 RPM	630 RPM	630 RPM	630 RPM
<b>Dispensers</b>				
Bleach	●	●		●
Fabric softener	●			
<b>Wash cycles</b>				
Number of cycles	15	10	7	9
<b>Cottons regular</b>				
Auto soak (30 min.)	●	●	●	●
Auto soak (15 Min.)	●			
Extra heavy soil		●		●
Heavy soil	●	●	●	●
Medium soil	●	●	Normal	●
Light soil	●	●	●	●
<b>Easy care</b>				
Auto soak (15 min.)	●	●	●	●
Heavy soil	●	●		●
Medium soil	●	●	Normal	●
Light soil	●	●	●	●
Extra light soil				●
<b>Casuals-pulsed</b>				
Heavy soil				●
Medium soil				●
Light soil				●
<b>Delicate</b>				
Medium soil	●	●	Knits	
Light soil	●	●	●	
<b>Special cycles</b>				
2nd rinse	Cottons & easy care			
Rinse & spin (Quick rinse)	●	●		
Prewash	●			
Spin Only	●			
<b>Additional features</b>				
Quiet performance	Quiet-by-Design™	Quiet-by-Design™	Quiet-by-Design™	Quiet-by-Design™
Instructions/guides	Color lid instructions	Color lid instructions	Color lid instructions	Color lid instructions
<b>Appearance</b>				
Colors available*	WW	WW	WW	WW/CC
<b>Weights &amp; dimensions</b>				
Approx. shipping weight (lbs.)	160	160	160	160
H x W x D in inches	42 x 27 x 25-1/2	42 x 27 x 25-1/2	42 x 27 x 25-1/2	42 x 27 x 25-1/2

\*WW = White on white, CC=Bisque on bisque

## Washer Dimensions (in inches)



### Washer specifications:

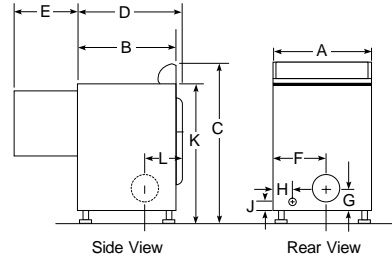
**Electrical rating:** 115V, 60 Hz, 10 Amps

**Circuit requirements:** An individual properly-grounded branch circuit, with a three-prong grounding-type receptacle protected by a 15- or 20-amp circuit breaker or time-delay fuse, is required.

**Washer Note:** Washer wall outlet must be located within 36" of service cord entry. Wall outlet must not be located behind dryer.

**Dryer Note:** Dryer wall outlet must be located within 36" of service cord entry and accessible when dryer is mounted in position.

## Dryer Dimensions (in inches)



	5.7 cu. ft. Capacity	6.0 cu. ft. Capacity	7.0 cu. ft. Capacity
A	27	27	27
B	25-1/2*	25-1/2*	25-1/2*
C	42	42	42
D	25-3/4	25-3/4	28-1/4
E	23-1/2	23-1/2	23-1/2
F	11-3/4	11-1/2	11-1/2
G	5-1/2	3-1/2	3-1/2
H	2	2	2
J	2-1/2	2-1/2	2-1/2
K	36	36	36
L	4-3/4	5-1/4	8-1/2

\*24-1/2" from the edge of the side panel to the front. 25-1/2" from front to edge of end caps.

## Dryer Specifications

### Exhaust Options:

**Electric:** 4-way via rear, right, left and bottom.

**Gas:** For 6.0 and 7.0 cu. ft. dryers, when viewed from the front of the unit, exhaust 3-way via rear, left and bottom. For 5.7 cu. ft. dryers, when viewed from the front of the unit, exhaust 3-way via rear, right and bottom. Dryer is shipped exhausted to the rear. Alternate exhausting knockouts are supplied.

### Circuit Requirements:

**Electric:** An individual, properly grounded branch circuit, protected by a 30-amp circuit breaker or a time-delay fuse is required.

### Electric Dryer Rating:

240V, 5600W, 24A, 60Hz—5.7, 6.0, 7.0 cu. ft. dryers  
208V, 4400W, 22A, 60Hz—5.7, 6.0, 7.0 cu. ft. dryers

**Gas:** An individual, properly grounded branch circuit, with a three-prong grounding-type receptacle, protected by a 15- or 20-amp circuit breaker or a time-delay fuse is required.

### Gas Dryer Electric Rating:

120V, 60Hz, 6A

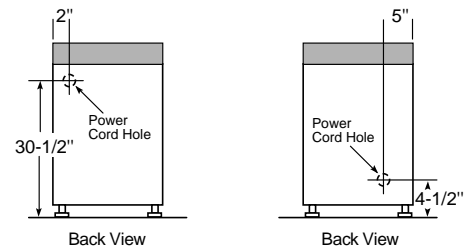
**Gas (BTU/HR):** 22,000 (except on 5.7 cu. ft. models which is 20,000). Factory-equipped for natural gas. Tested for LP gas. LP gas supply requires an optional conversion kit, 5.7 cu. ft. model kit is WE25X10003, 6.0 and 7.0 cu. ft. model kit is WE25X0217. Have a qualified gas technician install a conversion kit. See dryer ducting information for proper installation.

**Dryer Note:** Dryer wall outlet must be located within 36" of service cord entry and accessible when dryer is mounted in position.

## Power Cord Locations

5.7 cu. ft. Dryers

6.0 and 7.0 cu. ft. Dryers



Listed by  
Underwriters  
Laboratories

Dryers	Electric	NWSR483EB	NBXR463EB	NVL333EB
	Gas	NWSR483GB	NBXR463GB	NVL333GB
<b>Capacity</b>				
Capacity cu. ft		7.0 Super	6.0 Extra-large	5.7 Extra-large
<b>Controls</b>				
Rotary		●	●	●
Heat selections		4	4	3
<b>Dry system</b>				
Temperature sensor		Thermostat	Thermostat	Thermostat
Dryer drum		DuraDrum™	DuraDrum™	DuraDrum™
Drum baffles		White	White	White
<b>Signal</b>				
End-of-cycle		Variable		
<b>Dry cycles</b>				
Number of cycles		8	6	3
<b>Cottons regular</b>				
Automatic dry cottons		●	●	●
Optional		●		
<b>Easy care</b>				
Automatic dry easy care		●	●	●
Wrinkle care		●		
<b>Timed dry</b>				
Maximum time available		80 Mins.	80 Mins.	70 Mins.
<b>Special cycles</b>				
Dewrinkle		●	●	
<b>Additional features</b>				
Quiet performance		Quiet-by-Design™	Quiet-by-Design™	Quiet-by-Design™
Dryer interior light		●		
<b>Appearance</b>				
Colors Available*		WW	WW	WW/CC
<b>Weights &amp; dimensions</b>				
Approx. shipping weight - elect.		119	112	125
Approx. shipping weight - gas		125	115	130
H x W x D in inches		42 x 27 x 25-1/2**	42 x 27 x 25-1/2**	42 x 27 x 25-1/2**

\*WW = White on white, CC = Bisque on bisque.

\*\*24-1/2" from the edge of the side panel to the front.  
25-1/2" from front to edge of endcaps.

## Dryer Exhausting Information—Use Metal Duct Only Vertical and Horizontal Ducting

Domestic Dryer Models	Number of 90° Turns	Best Performance			
		Maximum Length of 4" Dia. Rigid Metal Duct		Maximum Length of 4" Dia. Flexible Metal Duct	
		Exhaust Hood Type		Exhaust Hood Type	
		A 4" Opening	B 2-1/2" Opening	A 4" Opening	B 2-1/2" Opening
7.0 and 6.0 Capacity Models all Electric Dryers	0	90 ft.	60 ft.	55 ft.	45 ft.
	1	60 ft.	45 ft.	40 ft.	30 ft.
	2	45 ft.	35 ft.	30 ft.	20 ft.
	3	35 ft.	25 ft.	20 ft.	15 ft.
7.0 and 6.0 Capacity Models all Gas Dryers	0	90 ft.	60 ft.	55 ft.	45 ft.
	1	60 ft.	45 ft.	40 ft.	30 ft.
	2	45 ft.	35 ft.	30 ft.	20 ft.
	3	35 ft.	25 ft.	20 ft.	15 ft.
5.7 Capacity Electric and Gas Dryers	0	60 ft.	48 ft.	30 ft.	18 ft.
	1	52 ft.	40 ft.	22 ft.	14 ft.
	2	44 ft.	32 ft.	14 ft.	10 ft.
	3	32 ft.	24 ft.	—	—
	4	28 ft.	16 ft.	—	—

## Dryer Exhausting Information

For complete information see installation instructions packed with dryer.

**Important Note:** GE Kit Number 14-A018 needed when converting rear exhaust to bottom or side (on 5.7 extra-large capacity models only).

### Ducting Materials

For best performance, this dryer should be vented with 4" diameter all-rigid metal exhaust duct. If "all-rigid metal" duct cannot be used, then "flexible all-metal" venting can be used, but it will reduce the maximum recommended duct length.

The following kit or parts are available from your local service organization. Kit WX8X75—7" aluminum duct and 4" hood, short tail.

(OR individual parts):

WX8X65 7" aluminum flex duct only

WX8X58 4" clamps (2)

WX8X67 4" exhaust hood

See installation instructions for complete information.

### Exhaust length calculation:

1. Determine the number of 90° turns needed for your installation.

If you exhaust to the side or bottom of dryer, add one turn.

2. The maximum length of 4" rigid (aluminum or galvanized) duct which can be tolerated is shown in the table. The maximum lengths for flexible ducts are less than for rigid duct. See table in installation instructions.

A turn of 45° or less may be ignored. Two 45° turns within the duct length should be treated as a 90° elbow. A turn over 45° should be treated as a 90° elbow.

**Exhausting the dryer to the outside is strongly recommended** to prevent large amounts of moisture and lint from being blown into the room. Gas dryers or any dryer located in a closet **must** be exhausted to the outside.

**Caution:** For personal safety do not terminate exhaust into a chimney, under any enclosed house floor (crawl space), or into an attic, since the accumulated lint could create a fire hazard or moisture could cause damage. Never terminate the exhaust into a common duct or plenum with a kitchen exhaust, since the combination of lint and grease could create a fire hazard.

Exhaust ducts should be terminated in a dampered wall cap to prevent back drafts, bird nesting, etc. The wall cap must also be located at least 12" above the ground or any other obstruction with the opening pointed down. Other terminations, such as louvered wall boxes, are acceptable provided they are equivalent to a 4" opening dampered wall cap.

## Special Installation Requirements

### Alcove or Closet Installation

- If your dryer is approved for installation in an alcove or closet, it will be stated on a label on the dryer back.
- The dryer **MUST** be exhausted to the outdoors. See installation instructions.
- Minimum clearances between dryer cabinet and adjacent walls or other surfaces are:
  - 0" either side
  - 3" front and rear
- Minimum vertical space from floor to overhead cabinets, ceilings, etc. is 52".
- Closet doors must be louvered or otherwise ventilated and must contain a minimum of 60 sq. in. of open area equally distributed. If this closet contains both a washer and a dryer, doors must contain a minimum of 120 sq. in. of open area equally distributed.
- No other fuel-burning appliance shall be installed in the same closet with a gas dryer.

### Bathroom or Bedroom Installation

- The dryer **MUST** be exhausted to the outdoors. See installation instructions.
- The installation must conform with the local codes, or in the absence of local codes, with the National Fuel Gas Code, ANSI Z223.

### Minimum Clearances other than Alcove or Closet Installations

- Minimum clearances to combustible surfaces:
  - 0" both sides
  - 3" rear

For more information on venting kits and accessories, please call 1-800-GE-CARES.



Listed by Underwriters Laboratories

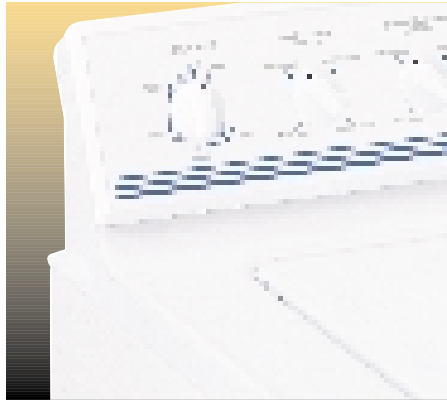
# Hotpoint Laundry Features

*Hotpoint offers performance, versatility and cleanability features to meet your every need.*



### Super capacity

The 3.2 cu. ft. super capacity plus washer and 7.0 cu. ft. super capacity dryer are designed to take on family-size loads.



### Updated styling

Unique upswept design with large, easy-to-read graphics provides a clean, contemporary look.



### Balance Pro™ suspension system

A floating rod-and-spring design and dynamic balance ring allow the washer to handle off-balanced loads on any type of floor.

Not all features available on all models

## Consumer Services

*Visit us at [hotpoint.com](http://hotpoint.com)*



### We're surfer-friendly!

Completely comprehensive, this site provides you with virtually everything you need to know about Hotpoint® appliances, parts, accessories and service. And, it's also surfer-friendly, so your searches won't be endless—they'll be effortless!



### The GE Answer Center® Information Service 800.626.2000 (GEAppliances.com)

Questions? Call any time.

Before or after you buy any GE or Hotpoint product, ask us about the features, product comparisons, pricing and where to find it. Call us any time. We never close.

### Industry-leading support—

#### GE Genuine Parts 800.626.2002

Enhance, upgrade or fix it. Check out our accessories!

Accessories can make great GE or Hotpoint products even better. Replacement parts for GE, Hotpoint and most other brands, too. Fast delivery, convenient, direct.

#### GE Appliance Service 800.432.2737 (800.GE.CARES)

##### Same day or next day service.

If you ever need product service, we'll come where and when you want—at your convenience. We're the largest manufacturer-owned service organization in the appliance industry. Same or next day service in most cases.

# HOTPOINT®



## Free Manuals Download Website

<http://myh66.com>

<http://usermanuals.us>

<http://www.somanuals.com>

<http://www.4manuals.cc>

<http://www.manual-lib.com>

<http://www.404manual.com>

<http://www.luxmanual.com>

<http://aubethermostatmanual.com>

Golf course search by state

<http://golfingnear.com>

Email search by domain

<http://emailbydomain.com>

Auto manuals search

<http://auto.somanuals.com>

TV manuals search

<http://tv.somanuals.com>