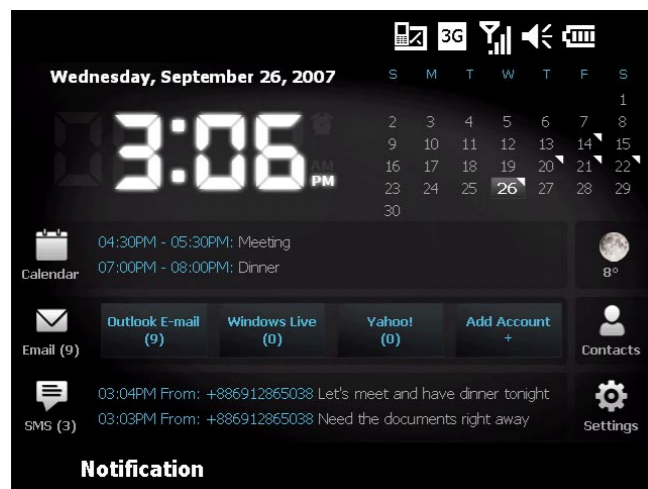


Using SnapVUE™

SnapVUE™ is an instant-on mode that gives you up-to-date weather information, SMS messaging, and a Direct Push function that enables you to receive instant work e-mails (Outlook E-mail) from your company's Exchange Server mailbox.

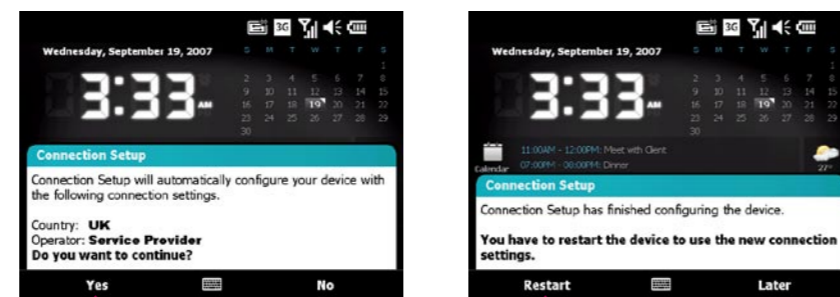
To change to SnapVUE mode, tap the **SnapVUE** button that is located on the lower left side of the touch panel. You can switch to SnapVUE mode anytime, whether Windows Vista® is running or off.



Set Up Data Connection

In SnapVUE, a 3G or GPRS/EDGE data connection is needed so you can access the Internet and download the latest weather information, synchronize information with the Exchange Server, and send and receive e-mails. The **Connection Setup** wizard automatically sets up the data connection for you based on the USIM/SIM card that you inserted on your Mobile Computer.

Note In order to use a 3G or GPRS/EDGE data connection to connect to the Internet, you need to have a 3G or 2G USIM/SIM card and a data plan from your wireless service provider.



1 When you see the notification message from the Connection Setup wizard, tap **Yes**.

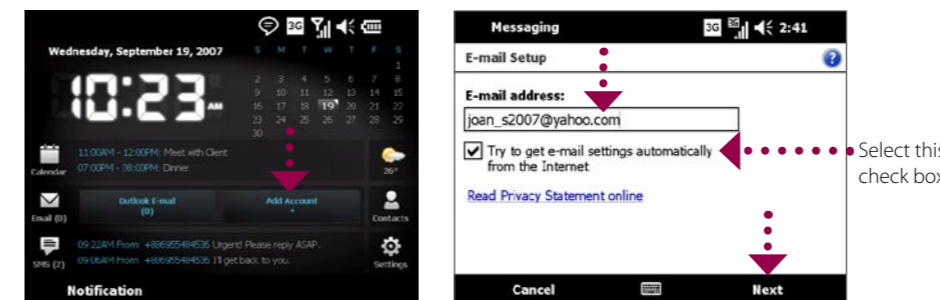
Note If your USIM/SIM card supports multiple network operator profiles, a message will appear with network profile choices. Select the profile you want to use and tap **OK**.

2 Connection Setup then starts to configure the data connection settings.

3 After the Connection Setup completes the configuration, tap **Restart**.

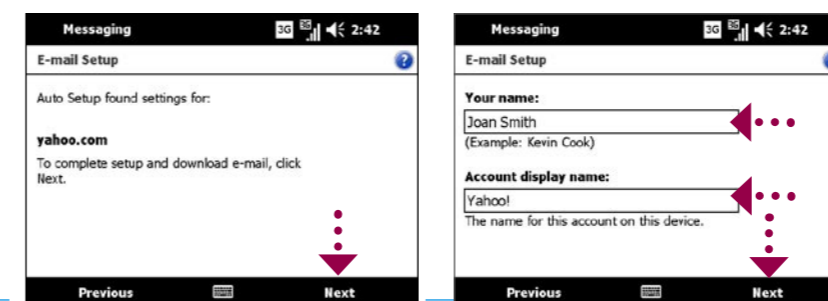
Set Up E-mail Accounts in SnapVUE™

Get e-mail messages anytime in SnapVUE mode. Set up your e-mail account(s) so you can send and receive e-mail messages using your favorite e-mail service.



1 Tap **Add Account** on the Home screen.

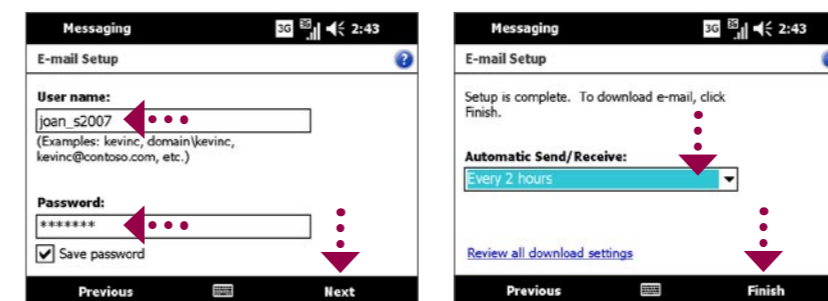
2 Enter your **E-mail address** and tap **Next**.



3 Auto Setup downloads e-mail server settings automatically to your device. Tap **Next**.

4 Enter **Your Name** and **Account display name**. Tap **Next**.

Note If Auto Setup is unsuccessful, you need to manually enter the settings in the succeeding screens.



5 Enter your **User name** and **Password** for the e-mail account. Tap **Next**.

6 Choose how frequent you want your device to automatically send and receive e-mail. Tap **Finish**.

You can also synchronize Outlook E-mail in SnapVUE with your company's Exchange Server so you can access your company e-mails.

Refer to the User Manual to learn how to get company e-mails in SnapVUE.

htc Shift

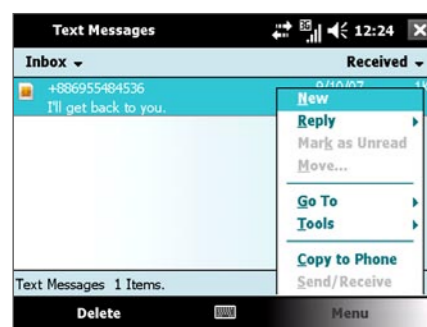
Read Me First

This **Read Me First** will help you get started with using your Mobile Computer. We recommend that you have this guide handy when you start using your Mobile Computer.

For a more complete reference, consult the User Manual that came with the device.

Send Text Messages

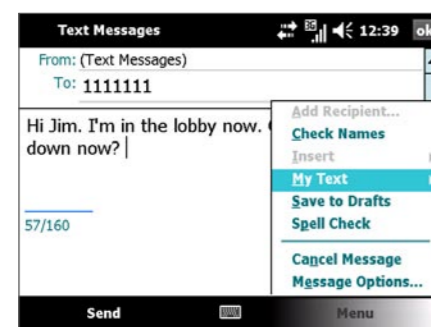
In SnapVUE mode, you can send short text messages (SMS) to other mobile phones or devices.



1 Tap the **SMS** icon on the Home screen and then tap **Menu > New**.

2 In the **To** field, enter the mobile phone number of the recipient.

Tip To add more recipients, enter their mobile phone numbers, separating them with a semicolon. You can also tap **To** to add mobile phone numbers from Contacts.



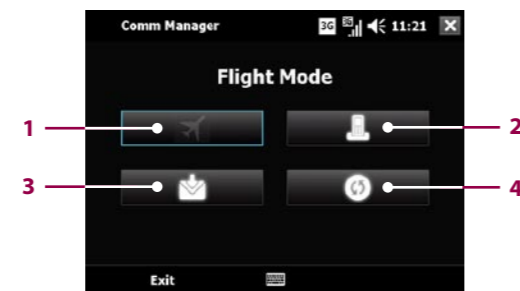
3 Enter your message.

- To quickly add common messages, tap **Menu > My Text** and tap a desired message.
- To check the spelling, tap **Menu > Spell Check**.

4 Tap **Send**.

The Comm Manager

Comm Manager acts like a central switch that allows you to easily connect and disconnect from the Internet and to turn on and off Direct Push. To open the Comm Manager, tap the **Settings** icon on the Home screen and then tap **Comm Manager**.



1 Tap to turn on **Flight Mode**. This disconnects the mobile computer from the network of your wireless service provider in both the SnapVUE mode and Windows Vista®. (To reconnect to your service provider's network, tap the **Modem** button.)

Note Turning on Flight Mode also turns off Bluetooth and Wi-Fi in Windows Vista®.

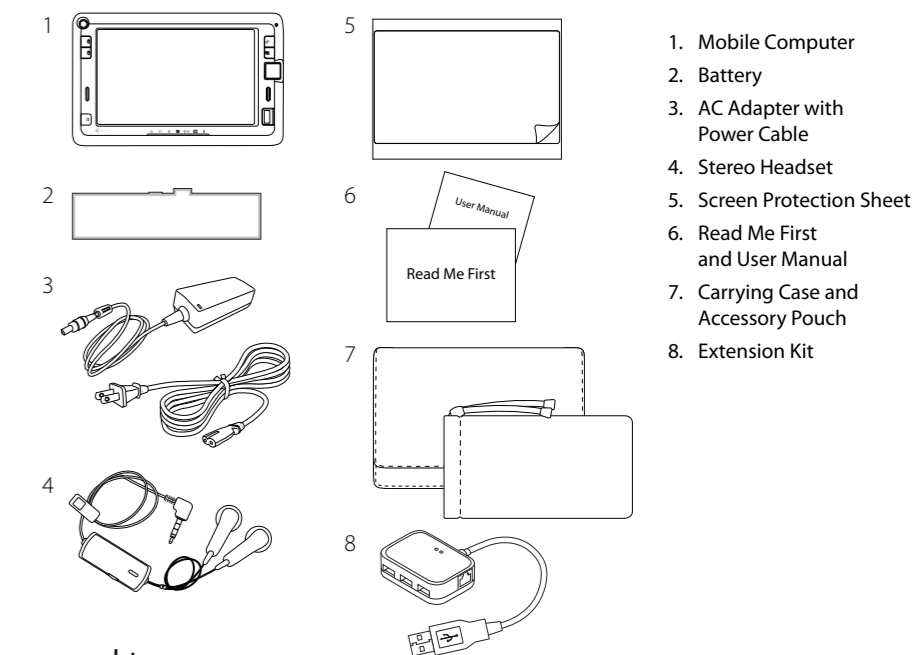
2 Tap to connect or disconnect from the network of your wireless service provider.

3 Tap to toggle **Direct Push** on (to instantly receive Outlook e-mails as they arrive) or off (to manually retrieve e-mails).

4 Tap to open **ActiveSync** where you can manually start or stop synchronization, change Exchange Server settings, set a regular sync schedule (if you're not using Direct Push), and more.

What's in the Box

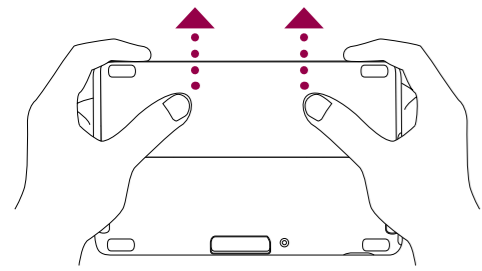
These are the items that you should find inside the box.



www.htc.com

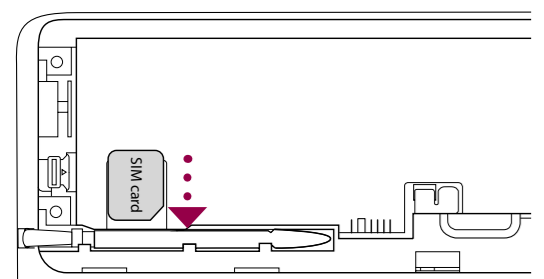
Before Using Your Mobile Computer

A. Remove the battery cover



- 1 With the bottom side facing up, turn the Mobile Computer so that the battery compartment faces away from you.
- 2 Press down firmly on the battery cover and then slide it out.

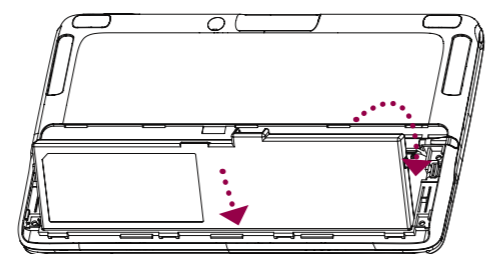
B. Insert a USIM/SIM card



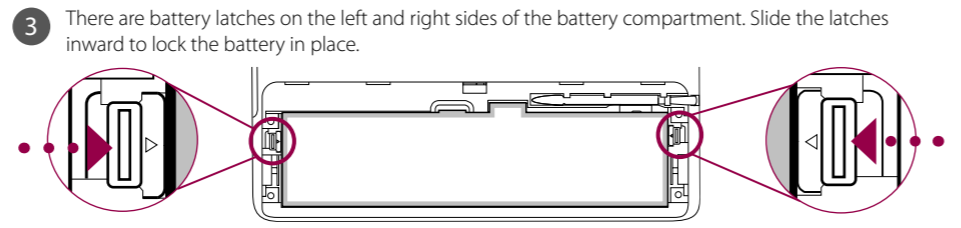
The USIM/SIM card slot is inside the battery compartment.

Insert your USIM/SIM card into the SIM card slot, with the gold contacts facing down and the cut-off corner directed toward the slot.

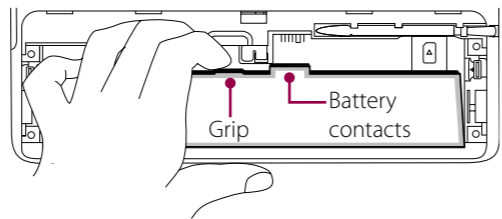
C. Install the battery



- 1 Turn the Mobile Computer so that the battery compartment faces toward you.
- 2 With the label facing up, insert the bottom end of the battery pack first and then press down the battery.



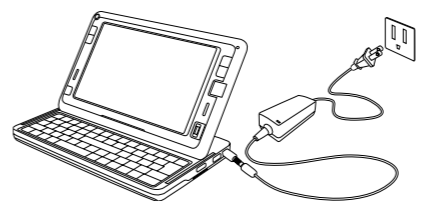
- 3 There are battery latches on the left and right sides of the battery compartment. Slide the latches inward to lock the battery in place.



Note Slide the battery latches outward to release the battery. Remove the battery by lifting it up from the protruding grip that is located beside the battery contacts.

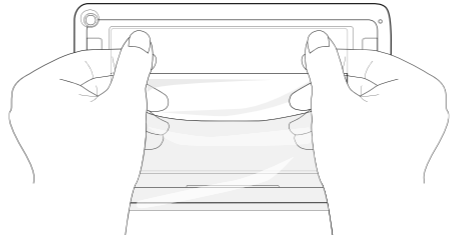
D. Charge the battery

New batteries are shipped partially charged. Use the AC adapter to charge the battery pack fully before using your Mobile Computer for the first time. When charging, the battery LED () lights amber. The battery LED lights green when the battery is fully charged.



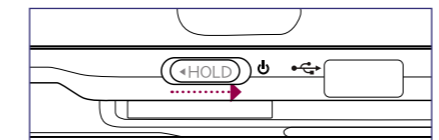
E. Attach the screen protection sheet

Use the supplied screen protection sheet to protect the touch screen from scratches, moisture, or smudges.



- 1 Peel off a small part of the screen protection sheet from its left and right corners.
- 2 Peel off the back sheet and then fix the whole protection sheet to cover the touch screen.
- 3 Attach the screen protection sheet starting from the top of the touch screen.

F. Turn on the power

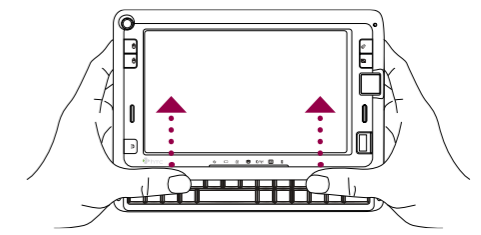


On the right side of your Mobile Computer, slide the Power/Hold switch to the right for 1 to 2 seconds to turn on the power.

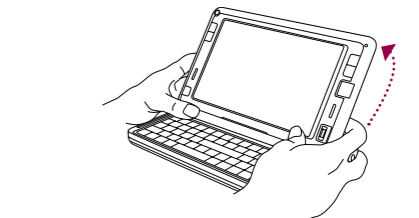
Note Your Mobile Computer comes with PC-cillin Internet Security which is Trend Micro's anti-virus software. Make sure to run the installer to install this anti-virus software. See the user manual for installation instructions.

Adjusting the Touch Panel

A. When sliding out and tilting



- 1 Hold the Mobile Computer with both hands. From the base of the touch panel, use your left and right thumbs to push and slide the touch panel outward.

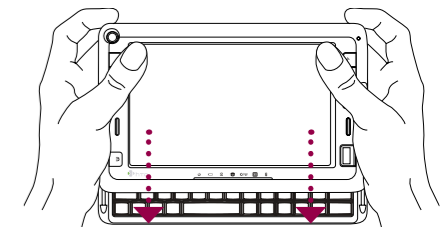


- 2 Tilt up the touch panel. To do so, press your left and right thumbs down on the base of the touch panel and then use your left and right index fingers to push up the panel.

B. When folding down into a tablet



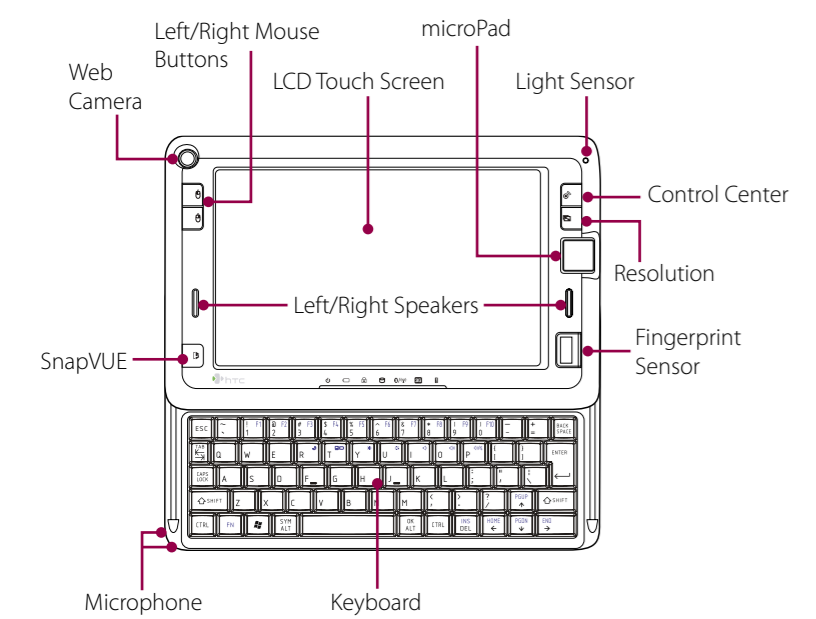
- 1 Fold down the touch panel by pressing down on the left and right sides of the panel.



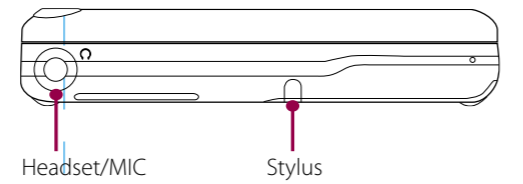
- 2 From the upper left and right edges of the touch panel, push and slide the touch panel towards you until the panel is aligned with the base of the keyboard.

The Mobile Computer

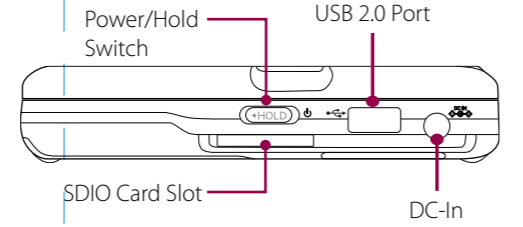
A. Front side



B. Left side



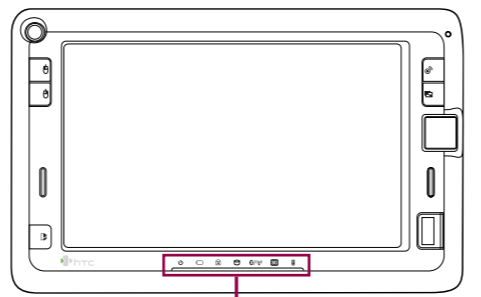
C. Right side



D. Back side



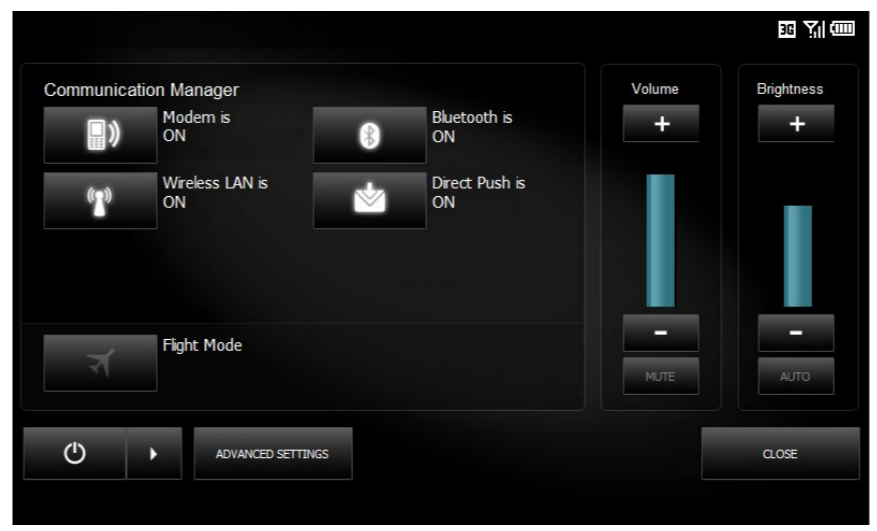
E. Status indicators



- Power
- Battery
- CAPS Lock
- Hard Disk Activity
- Bluetooth/Wi-Fi
- Data Connection
- E-mail/SMS

The Control Center

The **Control Center** provides a central location for you to quickly turn on and off the Bluetooth, Wi-Fi and 3G mobile connections, adjust volume and brightness, shut down Windows, and more. To open and use the Control Center, press the **Control Center** button on the upper right side of the touch panel.



Connect to the Internet

Use 3G or GPRS/EDGE

- 1 Open the Control Center and tap the **Modem** button.
- 2 Wait for the Mobile Computer to connect to your provider's network.

When connected, you will see one of the following status icons on the upper-right corner of the Control Center:

- H: HSDPA
- 3G: UMTS
- E: EDGE
- G: GPRS

- 3 When you see one of the above status icons, tap **Close** to exit from the Control Center.
- 4 Open Internet Explorer® and start browsing the web.

Use Wi-Fi

- 1 Open the Control Center and tap the **Wireless LAN** button to turn Wi-Fi on.
- 2 When Wi-Fi is on, tap **Close** to exit from the Control Center.
- 3 Tap **Start > Control Panel > Network and Internet > Network and Sharing Center**.
- 4 Tap **Manage wireless networks**.
- 5 Tap **Add** and then tap **Add a network that is in range of this computer**.
- 6 Select a wireless network and then tap **Connect**.
- 7 If you are connecting to a secured network, enter the network security key or passphrase and then tap **Connect**.
- 8 Tap **Close**.
- 9 Open Internet Explorer® and start browsing the web.

Free Manuals Download Website

<http://myh66.com>

<http://usermanuals.us>

<http://www.somanuals.com>

<http://www.4manuals.cc>

<http://www.manual-lib.com>

<http://www.404manual.com>

<http://www.luxmanual.com>

<http://aubethermostatmanual.com>

Golf course search by state

<http://golfingnear.com>

Email search by domain

<http://emailbydomain.com>

Auto manuals search

<http://auto.somanuals.com>

TV manuals search

<http://tv.somanuals.com>