



Back Cover

Front Cover



Inside Front Cover

Inside Back Cover

This is the cover art for 2 booklets: Getting Started & Having Fun. The booklets are side by side saddle-stich binding (or perfect-bound).

| | | | | | | | | | |
|--|---|------------------------|---|--|------------------------------------|--|-------------------|--|--|
| PhilippeBecker 612 Howard Street Suite 200 San Francisco, CA 94105 T 415 348 0054 F 415 348 0063 beckersf.com | FILE NAME TM1630 Touch Pro2 Guide_Cover.ai | | PRINTING STATIONS: 4 | | | | MATCH COLORS: | | CONFIDENTIAL THIS PROOF IS NOT FOR COLOR MATCH |
| | DATE 05.13.09 | DRAWN BY production | DELINE INFORMATION Varies, see dieline | | CYAN MAGENTA YELLOW BLACK | | 72K | | |
| | CREATIVE APPROVAL | PRODUCTION APPROVAL | PROOFREADING APPROVAL | | | | | | |
| | PRODUCT SUPPLIER T-Mobile | | PRINTER CONTACT | | | | | | |
| <small>CLIENT SIGNATURE INDICATES THAT THE CLIENT HAS PROOFREAD COPY AND CLOSELY EXAMINED ART FOR FINAL APPROVAL OF THIS MECHANICAL FILE TO PROCEED TO THE PRINTER. PHILIPPEBECKER IS NOT RESPONSIBLE FOR PROOFREADING COPY OF OTHER MATERIALS SUPPLIED. SPELLING, PUNCTUATION, GRAMMAR, AND CONTACT ARE THE SOLE RESPONSIBILITY OF THE CLIENT. THIS MECHANICAL FILE CONTAINS PROPRIETARY INFORMATION AND IS CONFIDENTIAL.</small> | | | | | | | | | |

OVERVIEW

This guide provides you with everything you need to get started. If you need additional information on features and services, please select one of these helpful options:

- Refer to your User Manual on the CD that comes with your device,
- Visit www.t-mobile.com,
- On your device, tap **Start > Help**,
- On your device, tap **Start > Programs > My Account**.

TABLE OF CONTENTS

| | |
|-------------------------------|----|
| Introducing Your Device | 4 |
| Service Activation | 6 |
| SIM Card and Battery | 7 |
| Getting Started Wizard | 9 |
| Home Screen | 10 |
| Communication Manager | 12 |
| Call Functions | 13 |
| Contacts | 14 |
| Synchronize | 15 |
| E-mail Setup | 17 |
| myFaves® Setup | 18 |
| Bluetooth® Setup | 25 |
| Emergency Dialing | 26 |
| Caring for Your Device | 27 |
| Tips for Safety | 28 |

Having Fun

Turn to the **Having Fun** section of this booklet to learn what else your new phone can do.

INTRODUCING YOUR DEVICE

HTC Touch PRO2



Adjustable Display
Open the slide and tilt the display up to 50°.



Ctrl key
Use the same Ctrl key shortcuts that you use on your computer keyboard.

Messaging key
Press to go to Messaging main screen.

SMS key
Press **ALT + SMS** to open your text messaging inbox.

Browser key
Press **ALT + Browser** key to launch Internet Explorer.

Comm key
Press **ALT + Comm** key to open Comm Manager.

SERVICE ACTIVATION

If you are a new T-Mobile® customer and your service has not been activated, simply call Customer Care at **1-800-937-8997** from your landline phone and a T-Mobile Activations representative will assist you.

You will need the following information when activating service:

- Service Agreement and agent code on your Agreement
- Your name, home address, home phone, and billing address
NOTE: For business and government account, please provide the name of your company or government agency, address, and tax ID.
- Your Social Security number, current driver's license number, and date of birth for credit check purposes
- Your choice of T-Mobile rate plan and services (see www.t-mobile.com for latest plan information)
- SIM serial number and IMEI number (located on the box bar code label)

By activating service, you acknowledge that you have read, understand, and agree to be bound by each of the terms and conditions of the Service Agreement.

SIM CARD AND BATTERY

Your Subscriber Identity Module (SIM) card identifies you to the wireless network. Your device will not work without the SIM card.

To insert the SIM and battery:

1. Detach your SIM card.



2. Press and slide to disengage the back battery cover. Lift the cover up and away.



3. Remove the battery by lifting it out using the groove in the upper right side of the battery compartment. Slide the SIM card into the slot with the golden contacts facing down and the notched corner facing out.



4. Align the golden contacts on the battery with the contacts in the battery compartment. Snap the battery into place and replace the battery cover.



5. Plug the charger into the sync connector on the bottom of your device and into an electrical outlet to charge. When charging is complete, disconnect the charger from the device.

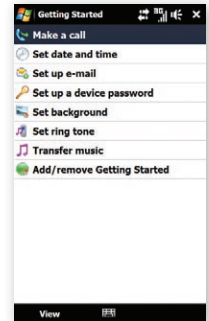
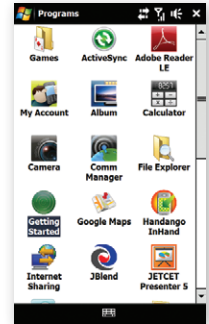


GETTING STARTED WIZARD

Press the **Power** key to power on your device.

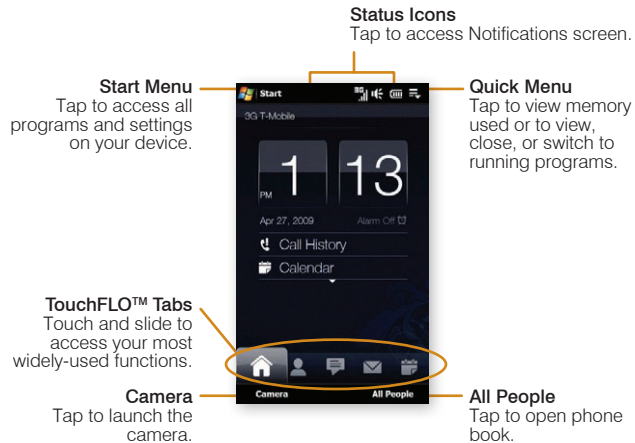
To run the Getting Started wizard:

1. Tap **Start**.
2. Tap **Programs**.
3. Tap **Getting Started**.
4. Tap to set up the following:
 - Make a call
 - Set date and time
 - Set up e-mail
 - Set up a device password
 - Set background
 - Set ring tone
 - Transfer music
 - Add / remove Getting Started



HOME SCREEN

On the Home screen, you can quickly access a variety of information, such as applications and settings on your device through the Quick Menu, Start Menu, Notifications, and TouchFLO™ navigation tabs.



Quick Menu

Tap the Quick Menu icon to view and stop currently running programs, switch between programs, or view current system memory usage.

Start Menu

Tap to access all of your programs and settings or return to the Home screen.

Notifications

Tap the top status bar to access the Notifications screen. View your connection status, missed calls, voicemail, new messages, and more.

TouchFLO™ 3D navigation tabs

The TouchFLO™ navigation tabs allow quick access to commonly used functions and programs.



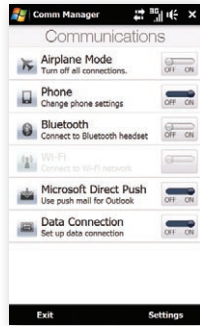
Scroll through and select TouchFLO™ tabs using your finger or the stylus:

- Tap to select the desired tab.
- Touch and hold the active tab, and then slide right or left over the tabs. Release when the desired tab is active.
- Swipe right or left to scroll through the tabs.

NOTE: To customize the Home screen tabs, please refer to the User Manual on the CD that comes with your device.

COMMUNICATION MANAGER

The Communication Manager allows you to enable or disable device features and data connections. To access the Communication Manager, from the Home screen, swipe right or left to the **Settings** tab and tap **Communications**.



Airplane Mode

Tap to toggle between turning airplane mode on or off

Phone

Tap to toggle between enabling or disabling the phone function

Bluetooth®

Tap to toggle between turning the Bluetooth feature on or off. Tap **Settings** > **Bluetooth** to configure the Bluetooth feature on your device.

Wi-Fi

Tap to toggle between turning Wi-Fi on or off. Tap **Settings** > **Wireless LAN** to configure Wi-Fi on your device.

Microsoft Direct Push

Tap to toggle between automatically receiving (as items arrive) or manually retrieving Outlook e-mail

Data Connection

Tap to connect or disconnect active data services (e.g. GPRS)

CALL FUNCTIONS

To make a call:

1. From the Home screen, press the **Send** key.
NOTE: If you have myFaves, tap **Phone**.
2. Tap the phone number.
3. Tap **Talk** or press the **Send** key.

To answer a call: Touch and drag the slider to **Answer** or press the **Send** key.

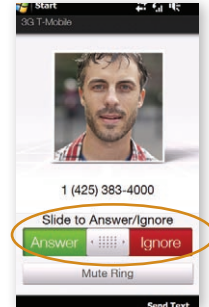
To end a call: Tap **End Call** or press the **End** key.

Set up and call voicemail

To set up voicemail, from the Home screen, press the **Send** key (if you have myFaves, tap **Phone**) and then touch and hold the **1** button or open the slide and then press and hold the **1** key on the keypad. To set up your voicemail, follow the tutorial.

To reset the password to the last four digits of your phone number, enter **#793#** and press the **Send** key.

To call voicemail, from the Home screen, press the **Send** key (if you have myFaves, tap **Phone**) and then touch and hold the **1** button.



Touch and slide to answer or ignore

CONTACTS

Add new contact

1. From the Home screen, press the **Send** key.
NOTE: If you have myFaves, tap **Phone**.
2. Tap the numbers for the desired phone number.
3. Tap **Save to contacts**.
4. Tap **Yes, Create new contact**.
5. Tap the **First** field to enter the contact's first name using the on-screen keyboard.
NOTE: You can also open the slider and use the keypad.
6. Tap **Done**.
7. Tap the **Last** field to enter the contact's last name.
8. Tap **Done**.
9. Tap the **Number Type** drop-down menu and tap the desired number type.
10. Tap **Save**.

Call contact from the phone book

1. From the Home screen, press the **Send** key.
NOTE: If you have myFaves, tap **Phone**.
2. Enter the contact's name by tapping the number buttons with the associated letter. A list of possible contact's displays.
3. Tap the desired contact to initiate the call.

SYNCHRONIZE

Synchronize using USB cable

You can synchronize your corporate e-mail, calendar, contacts, and tasks directly with your computer by connecting your device to your computer using the USB cable. Before you can synchronize using the USB cable, you must first install Microsoft ActiveSync 4.5 or higher on your computer. ActiveSync is a synchronization program that allows you to:

- Synchronize your corporate e-mail, calendar, tasks, contacts, and Internet Explorer favorites
- Copy files between your device and your computer
- Install applications on your device
- Back up and restore device information

Install ActiveSync on computer

1. Insert the CD that came with your device into the CD-ROM drive in your computer.
2. Follow the instructions on the CD to install ActiveSync and Microsoft Outlook if you do not already have it installed on your computer.

Connect device to computer

1. Plug the USB cable into the sync connector port on the bottom of your device.
2. Plug the other end into a USB port on your computer.
3. Follow the ActiveSync instructions on your computer to synchronize data between your device and computer.

Synchronize wirelessly

You can synchronize e-mail, calendar, contacts, and tasks directly with your computer wirelessly without using the USB cable.

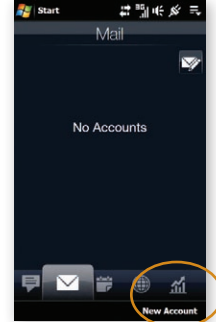
1. Tap **Start**.
2. Tap **Programs**.
3. Tap **ActiveSync**.
4. Tap **set up your device to sync with it**.
5. Enter your e-mail address and tap **Next**.
6. Enter your username, password, and domain and tap **Next**.
7. Enter the Server address, if necessary and tap **Next**.
8. Choose the data you want to synchronize. To adjust the e-mail size and the number of e-mails downloaded to your device, tap **Settings** at this screen.
9. Tap **Finish**.

E-MAIL SETUP

The Set Up E-mail application provides access to your work and personal e-mail from Microsoft® Exchange, AOL®, AIM®, Yahoo!®, Windows Live™, Gmail™, EarthLink®, Comcast®, and many more, including any POP3 or IMAP4 E-mail server. To set up your e-mail account:

1. From the Home screen, tap the **Mail** tab.
2. Tap **New Account**.
3. Tap the e-mail provider.
4. Read the Terms of Use and tap **Accept**, if necessary.
5. Enter your username and password.
6. Tap **Next**.
7. Tap **Finish**.

NOTE: To add additional e-mail accounts, while on the Mail tab, tap **Menu > Accounts > New Account**.



myFaves[®] SETUP

myFaves[®] is an optional calling plan. Benefits of signing up to myFaves:

- Unlimited nationwide calling to any five U.S. numbers, on any network (even landlines)*
- One-touch calling, text messaging, e-mail, and photo sharing**
- No domestic roaming or domestic long-distance charges
- Personalize contacts with favorite pictures and downloadable icons**

* myFaves only applies to calls directly between two people and allows unlimited nationwide calling to 5 U.S. numbers. You can change myFaves numbers once/month.

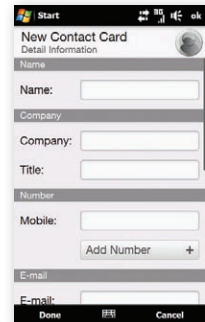
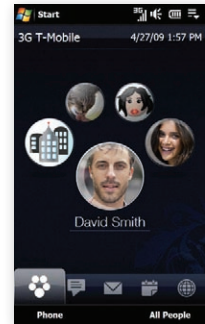
** Separate purchase/download charges may apply. Separate charges apply to send/receive domestic/international text/picture messages and e-mail.

Subscribe to myFaves[®]

To subscribe, go to www.t-mobile.com. When you have subscribed to myFaves, you will see five circles on your Home screen a few minutes after you power on your device.

Add myFaves contacts

1. From the Home screen, tap an unassigned myFaves circle.
2. Scroll to and tap a contact already saved in your phone book or tap **New**.
3. Enter the contact's name, company, title, phone number, and e-mail address.
4. Tap **Done** now or go to **Step 5** to assign an icon and **Step 8** to assign a ringtone.



Assign icon to myFaves

5. Tap the myFaves icon circle at the top right corner of your screen.
6. Tap one of the following:
 - **Facebook:** Enter the e-mail address and password for your Facebook account. Tap **Done**. Swipe up or down to scroll to and tap the Facebook contact. At Link Profiles, tap **Done**.
 - **Album:** Tap the desired picture. Touch and drag to move the crop circle to the desired location. Zoom the picture in or out by sliding your finger right or left on the Zoom bar. Tap **Done**.
 - **Camera:** Frame the subject and tap the **Shutter** icon to capture. Tap the **Back Arrow** icon.
 - **My Pictures:** Tap the desired picture. Touch and drag to move the crop circle to the desired location. Zoom the picture in or out by sliding your finger right or left on the Zoom bar. Tap **Done**.
 - **My Icons:** Tap the desired icon.
7. Tap **Done** now or go to **Step 8** to assign a ringtone.

Assign ringtone to myFaves

8. Scroll down and tap the **Ring tone** drop-down menu.
9. Tap the desired ringtone.
10. Tap **Done**.
11. When you are finished, tap **Done**.
12. Tap **Yes** to confirm saving the contact.

An hourglass displays in the circle while the contact is being added to the phone book. You can use your device during this time. Once the contact is added, you will receive a confirmation and the hourglass is replaced by your new contact.

Now you are ready to call your contact. From the Home screen, tap the contact circle and then tap **Call [number type]**.

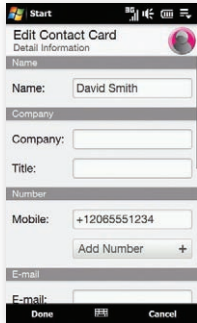
NOTE: Each original icon/ringtone selection and each change to an icon/ringtone may incur a separate download charge.

Edit myFaves

Names and icons: You can change names and icons at any time.

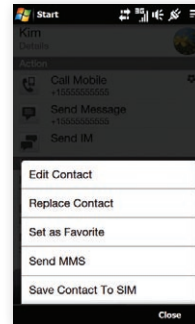
Phone numbers: You can only change a contact's phone number once per calendar month. If a number change is not allowed, you will receive an error message explaining why.

1. From the Home screen, tap the myFaves contact.
2. Tap **Edit Contact**.
3. Edit the contact's name, company, title, number, icon, ringtone, birthday, or anniversary. For more information on how to assign icons and ringtones, see instructions in the **Add myFaves contacts** section of this guide.



Replace myFaves contacts

1. From the Home screen, tap the myFaves contact.
2. Tap **Menu**.
3. Tap **Replace Contact**.
4. Swipe up or down to scroll to and tap a contact already saved in your phone book or tap **New**.
5. Enter the contact's name, company, title, phone number, and e-mail address.
6. Tap **Done** when finished.

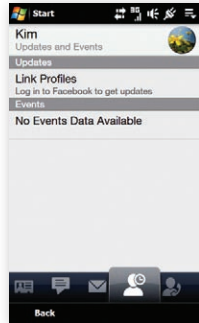


Add e-mail address

1. From the Home screen, tap the myFaves contact.
2. Tap the **Envelope** tab at the bottom of your screen.
3. Tap **Add Account**.
NOTE: To add additional e-mail accounts, tap **Menu > Add Email Address**.
4. Enter the e-mail address.
5. Tap **Ok**.

Link with Facebook

1. From the Home screen, tap the myFaves contact.
2. Tap the **Updates and Events** tab at the bottom of the screen.
3. Tap **Link Profiles**.
4. Enter the e-mail address and password for your Facebook account.
5. Tap **Done**.
6. Tap **Link Profiles** again.
7. Scroll to and tap the Facebook contact profile.
8. At **Link Profiles**, tap to select or clear the check boxes next to the content you want to link.
9. Tap **Done**.



BLUETOOTH® SETUP

Your device comes with Bluetooth technology, which is a wireless technology that enables a data connection between your device and a Bluetooth wireless headset and other Bluetooth devices.

Prepare Bluetooth wireless headset

To pair your device with a Bluetooth headset, make sure that your headset is fully charged and that you put the headset into pairing mode. See your Bluetooth headset's manual for more information.

Turn on Bluetooth feature and pair with headset

1. From the Home screen, touch and hold the active tab and then drag right or left to the **Settings** tab.
2. Tap **Communications**.
3. Tap **Settings**.
4. Tap **Bluetooth**.
5. Tap **Yes** to turn Bluetooth on.
6. Tap **Add**. Your device searches for your Bluetooth headset.
7. Tap the headset.
8. Enter the PIN, if required, and tap **OK**.
9. Tap **Done**.



EMERGENCY DIALING

While all phones are equipped with 911 emergency calling, this device may or may not permit its location to be approximated during a 911 call.*

* Availability of this feature depends on upgrades to the (a) wireless network and (b) 911 calling system that are required to be installed by the local 911 response agency or public safety answering point (PSAP); these upgrades may not be available everywhere within our wireless coverage area or your roaming area. This approximation of the device's location and the transmittal of location information are subject to emergency situations, transmission limits, network problems/limitations, interconnecting carrier problems, your device, buildings/tunnels, signal strength and atmospheric/topographical conditions, and may be curtailed, interrupted, dropped or refused. The device's approximate location is transmitted to the local 911 response agency or PSAP while the call is in progress; this approximation is intended solely to aid the PSAP in dispatching emergency assistance or to limit the search area for emergency services personnel. You should not rely solely on a phone for essential communications (such as a medical or other emergency). Please see T-Mobile's Terms and Conditions and Privacy Policy for additional service restrictions and details.

CARING FOR YOUR DEVICE

MAKING IT LAST

Your device is a complex electronic device; think of it as a mini-computer. Here are some hints that should help you extend the life of your new device.

Phones aren't cheap, so keep yours in a safe place — away from children who may find it fun to see if the device sinks or floats, and away from dogs that find plastic-coated products to be irresistible chew toys.

Water will damage your device and accessories — even a small amount such as water droplets from a soda in your car cup-holder, melting snowflakes, tears of joy, squirt-gun crossfire or steam from hot water in the kitchen or bathroom.

Use only batteries and accessories from the original manufacturer of your device. Non-approved accessories can cause damage to you or your device and shorten the device's life. Hint: If it's being sold out of someone's car trunk, walk away.

If your charger or any other accessory is damaged, replace it or take it to a qualified service dealer. Do not attempt to operate your device charger if it has received a sharp blow, been dropped, thrown from a speeding motorcycle or is otherwise damaged; doing so may damage your device.

TIPS FOR SAFETY

Check with your doctor if you have a pacemaker or hearing aid in order to ensure that cell phone usage is safe with your device. If you have questions about the interaction of cellular radio frequency and any other electronic equipment, ask the manufacturer of the equipment if cell phone radio frequencies will disrupt the equipment's performance.

When you are driving, T-Mobile encourages you to use your device in a safe and sensible manner. Here are a few tips:

- Assess road conditions before answering. Your safety is more important than any call.
- Prepare your hands-free headset, if you have one, or turn on your speakerdevice option before you start moving.
- Keep your device close. If it rings and you discover it's in the back seat, do NOT crawl over the seat to answer it while driving.
- Program frequently used numbers into your speed dial for easy one-touch dialing.



having fun

Table of Contents

| | |
|-------------------------------------|----|
| Memory Card | 2 |
| Text Messaging | 4 |
| Picture Messaging | 8 |
| Video Messaging | 10 |
| Instant Messaging | 12 |
| E-mail | 14 |
| myFaves® | 16 |
| Call myFaves | 16 |
| Send Text Message | 16 |
| Send E-mail Message | 17 |
| Send Picture or Video Message | 18 |
| Send Instant Message | 20 |
| Browsing | 21 |
| Accessories For Your Device | 23 |
| Additional Information | 24 |

Memory Card

Your device is capable of using a removable microSD memory card where you can store multimedia files, such as video clips, music tracks, sound files, images, and messaging data. See your User Manual for more information. Memory card sold separately.

To install the memory card, remove the back battery cover. Open the memory card slot cover and insert the card with the golden contacts facing down. Push it into the slot until it clicks into place and then replace the battery cover. To remove the card, press the card into the slot until it releases and pops out slightly, then pull it out.



Locate files on memory card

Pictures, videos, and music files are saved to the memory card by default, when installed.

1. Tap **Start**.
2. Tap **Programs**.
3. Tap **File Explorer**.
4. Tap **Up** until you see **My Device** in the top left corner below **File Explorer**.
5. Tap **Storage Card**.

NOTE: You can also see photos and videos stored on your memory card by going to **Start > Programs > Albums > Albums > Storage Card**.

Move files between memory card and device

1. Tap **Start**.
2. Tap **Programs**.
3. Tap **File Explorer**.
4. Tap **Up** until you see **My Device** in the top left corner below **File Explorer**.
5. Tap **Storage Card**.
6. Tap and hold the desired file.
7. Tap **Copy** or **Cut**.
8. Navigate to the destination location and tap **Menu**.
9. Tap **Edit**.
10. Tap **Paste**.

Text Messaging

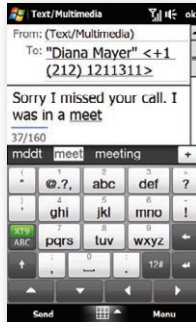
Your device supports three text modes:

- **Predictive (XT9®)** mode analyzes the keys you tap or press and attempts to finish the word you are entering. Words are also predicted based on words you have entered before.
- **Manual** mode does not attempt to predict the word you are entering.
- **Number (123) and Symbol** mode allows you to enter numbers and symbols.

Use on-screen keyboard

- To change text mode, while in the text entry screen, tap **XT9** on the on-screen keyboard to toggle between XT9 and manual mode.
- Tap **12#** to place in Number and Symbol mode.

See your User Manual for more information.



Use the keypad

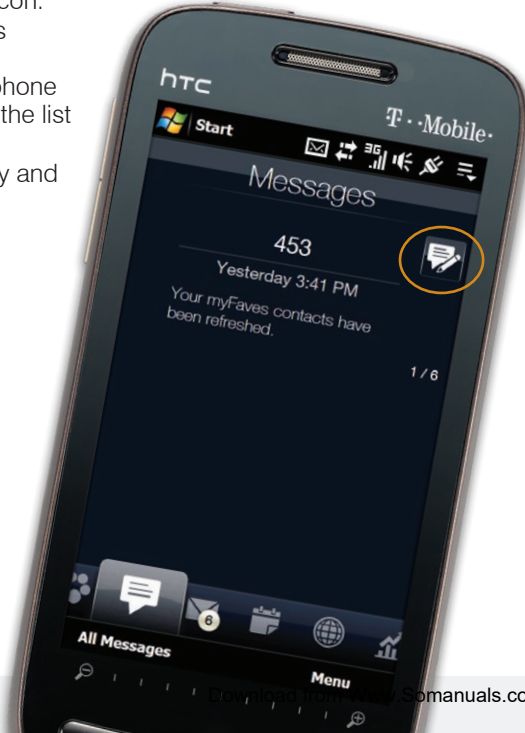


- To highlight text, position the cursor then press and hold the **Caps / Shift** key and use the directional arrows to highlight.
- To copy text, highlight the text and press **Ctrl + C**.
- To place copied text, position the cursor and press **Ctrl + P**.
- To type symbols, while in a text entry screen press the **ALT** key, then the **SYM** key, and then tap the desired symbol.


Send message

1. From the Home screen, tap the **Messages** tab.
2. Tap the **New Message** icon.
3. At **To**, enter the contact's phone number or name. If the contact is in your phone book, tap to select from the list displayed as you enter.
4. Tap in the message body and enter your message.
5. Tap **Send**.

Separate charges may apply to send/receive domestic/international text messages.



Read and delete message

Your device displays a **New Message** indicator  in your task bar when you receive a new text message. A circled number will also appear on the Messages tab on the Home screen.



To read a new message, from the Home screen, tap the **New Message** indicator in the task bar to open the Notifications screen. Tap the message you want to view.

To access messages in your Inbox:

1. From the Home screen, tap the **Messages** tab.
 2. Tap **All Messages**.
- OR
1. Tap **Start**.
 2. Tap **Messaging**.
 3. Tap **Text/Multimedia**.
 4. Tap the message you want to view.

To delete while in the inbox, touch and hold the message you want to delete and then tap **Delete**.

To delete while viewing a message, tap **Menu > Delete**.

Picture Messaging

Take and send pictures

1. From the Home screen, touch and hold the active tab and then drag right or left to the **Photos and Videos** tab.
2. Tap the **Camera** icon.
3. Frame your subject and tap the **Shutter** icon to capture.
4. Tap the **Envelope** icon
5. Tap one of the following:
 - **Send via MMS:** At **To**, enter the phone number. To select a contact in your phone book, begin to enter the contact's name or phone number, then tap the contact. Enter your subject and tap **Insert text here** to add text.
 - **Send via E-Mail:** At **To**, enter the e-mail address. To select a contact in your phone book, begin to enter the contact's name or phone number, then tap the contact. Enter your subject and tap **Insert text here** to add text.
6. Tap **Send**.



Separate charges may apply to send/receive domestic/international picture messages.

Video Messaging

Record and send videos

1. From the Home screen, touch and hold the active tab and then drag right or left to the **Photos and Videos** tab.
2. Tap the **Video** icon.
3. Frame your subject and tap the **Shutter** icon to begin recording.
4. Tap the **Shutter** icon again when finished.
5. Tap the **Envelope** icon.
6. Tap the desired account.
7. At **To**, enter the e-mail address. To select a contact in your phone book, begin to enter the contact's name or phone number, then tap the contact.
8. Enter your subject.
9. Tap **Insert text here**.
10. Enter your message.
11. Tap **Send**.



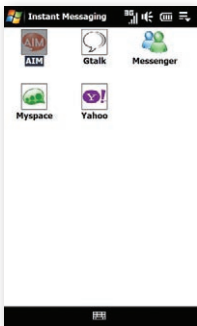
“Wishing you a Happy Birthday..!”

Separate charges may apply to send/receive domestic/international video messages.

Instant Messaging

Access and send instant messages

1. Tap **Start**.
2. Tap **Instant Messaging**.
3. Tap the instant messaging provider.
 - If you tapped **Windows Live™ Messenger**, tap **Sign in**.
 - If you tapped any other instant messaging provider, tap each provider that you would like to log in to and then tap **OK**.
 - To add a provider at a later time, tap **Options > Select Services** from the Instant Messaging sign in screen.
4. Tap the **AIM®**, **Google Talk™**, **MySpace®**, or **Yahoo! Messenger®** tab.
5. Sign in to your account to send IM messages to your contacts.



James05
movie @ 7.15. don't b late.

0207_lana
no worries. on my way.

James05
see you then!

Separate charges may apply to send/receive domestic/international instant messages.

E-mail

Access and send e-mail messages

To set up new e-mail accounts, see *E-Mail Setup* in the **getting started** section of this guide.

1. From the Home screen, tap the **Mail** tab.
2. If you have multiple accounts set up, tap the **Envelope** icon for the account you want to access.

NOTE: Touch and hold the icon to see the associated e-mail account.

3. Tap **Inbox**.
4. Tap **Menu**.
5. Tap **New**.
6. At **To**, tap **Menu**.
7. Tap **Add Recipient**.
8. Tap the desired contact.

NOTE: You will only see contact's who have e-mail addresses saved in their phone book profile.

9. Enter your subject and message.
10. Tap **Send**.



Wednesday, August 26

| | | | |
|---|-----------|----------------------|--------|
| • | Christine | Tonight? | 3:22p |
| • | Jason | RE: Sat May 5th | 1:06p |
| • | Donna | Shipping Confir... | 12:28p |
| | Erin | cookie recipe | 11:17a |
| | Jay | Birthday Surpris... | 11:09a |
| > | William | pics from this w... | 10:50a |
| | Amy | Trip to PA? | 10:36a |
| | Scott | book club on Fri... | 10:17a |
| | Philippe | beach trip - Sat... | 9:44a |
| | Kelsey | RE: copyright | 8:38a |
| | Tom | State football ga... | 8:02a |

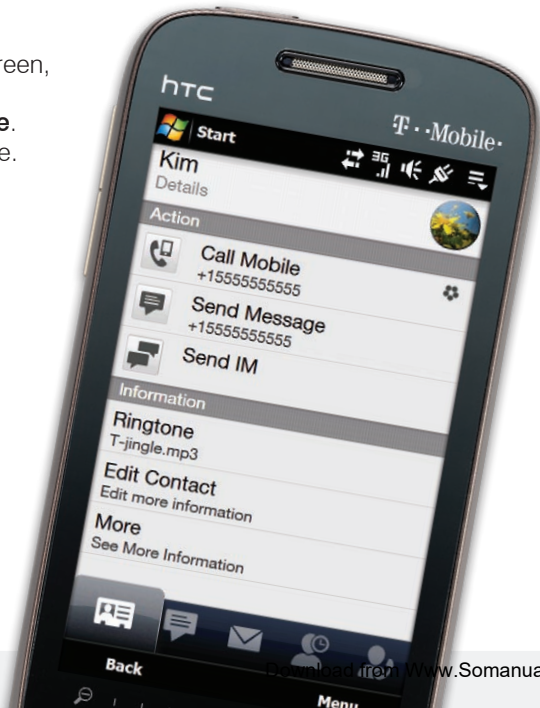
Separate charges may apply to send/receive/read domestic/international e-mails.

Call myFaves® contact

1. From the Home screen, tap the contact.
2. Tap **Call [Number Type]**.

Send text message

1. From the Home screen, tap the contact.
2. Tap **Send Message**.
3. Enter your message.
4. Tap **Send**.



Separate charges may apply to send/receive domestic/international text messages.

Send e-mail message

You will not see the Send E-mail link until you save an e-mail address for your myFaves contact. To add an e-mail address to a myFaves contact, see *myFaves setup - Add e-mail address* in the **getting started** section of this guide.

1. From the Home screen, tap the contact.
2. Tap **Send E-mail**.
3. Tap the account from which to send the e-mail.
4. Enter your subject and message.
5. Tap **Send**.

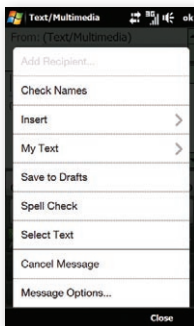


Separate charges may apply to send/receive domestic/international picture messages.

Send picture or video message

1. From the Home screen, tap the contact.
2. Tap **Send Message**.
3. Enter your subject and message
4. Tap **Menu**.
5. Tap **Insert**.
6. Tap **Picture/Video**.
7. Tap the desired picture or video.
8. Tap **Send**.

NOTE: If you have a memory card in your device, then videos are saved to the card by default. To locate videos on the memory card, tap **My Pictures** at the top left of your screen, then tap **My Device** > **Storage Card**.



“you’ve GOT to see this...”



Separate charges may apply to send/receive domestic/international video messages.

Send instant message

1. From the Home screen, tap the contact.
2. Tap **Send IM**.
3. Tap the desired instant messaging provider tab.

NOTE: To add an instant messaging provider that is not currently activated, tap **Options** >

Select Services from the Instant Messaging sign in screen.

4. Sign in to your account to send IM messages to your contact.

Separate charges may apply to send/receive domestic/international e-mail and instant messages.



Web Browsing

Experience the mobile Web like never before with T-Mobile's new web2goSM experience. New features include Web optimized device browser, a customizable start page for easy, one-click access to information, a powerful built-in Web search engine, and the ability to manage your account right from your device.

For more information about these services, see your services guide or visit t-mobile.com/shop/addons.

Visit a Web site

1. From the Home screen, touch and hold the active tab and then drag right or left to the **Internet** tab.
2. Tap **Browser**.
3. Tap **Menu**.
4. Tap **Go to Web Address**.
5. Enter the Web address for the desired Web site.
6. Tap the **Enter** button or press the **Enter** key.

Full access to the new t-zones[®] web2goSM experience requires the purchase of a compatible Web access data plan; separate additional charges may apply for downloads. Not all sites optimized for Web browsers. Actual content available for download may vary.

Download content

Download myFaves® icons, ringtones, wallpapers, and games:

1. From the Home screen, touch and hold the active tab and then drag right or left to the **Internet** tab.
2. Tap **Launch Browser/web2go**™.
3. Tap the **Downloads** tab to view content available for download.

Access account information

View your minutes remaining and bill summary, make payments, get information about additional plans and services, and more!

1. From the Home screen, touch and hold the active tab and then drag right or left to the **Programs** tab.
2. Tap **My Account**.
NOTE: You can also access My Account by tapping **Start > Programs > My Account**.



Separate purchase/download charges may apply.

Accessories For Your Device

Whether you're looking for a charger, a fashionable carrying case, a Bluetooth® headset or just want to browse for fun extras for your phone, T-Mobile® is the place to shop for accessories. Here are a few examples...

Memory Card



USB & Wall Charging System



Car Charger



To purchase accessories for your phone, visit T-Mobile.com, call 1.800.204.2449 or visit your nearest T-Mobile store.

*Accessory selection subject to change and may vary by location.

Additional Information

myFaves: Not available with all rate plans. myFaves only applies to calls directly between two people and allows unlimited nationwide calling to 5 U.S. numbers. You can change myFaves numbers once/month.

Messaging Plans/Features: You will be charged for all data sent by or to you through the network, regardless of whether received. Character length/file size of messages/ attachments may be limited. T-Mobile is not liable for content of messages/attachments or for any failures, delays or errors in any T-Mobile generated alerts or notifications.

Downloads: Additional charges apply; not all downloads available on all devices. You obtain no rights in downloads; duration of use may be limited; may be stored solely for use with your device. T-Mobile is not responsible for any download lost due to your error. See Pricing, Services and Device brochures, and **T-Mobile's Terms and Conditions (including arbitration provision)** at T-Mobile.com, for rate plan information, charges for features and services, and restrictions and details.

Yahoo!® and the Yahoo!® Messenger logos are registered trademarks of Yahoo! Inc. The Bluetooth® word mark and logo are owned by the Bluetooth SIG, Inc. and are used by T-Mobile under license. T-Mobile, t-zones, and the magenta color are federally registered trademarks of Deutsche Telekom AG. myFaves and the myFaves design are federally registered trademarks and web2go is a service mark of T-Mobile USA, Inc. All other brands, product names, company names, trademarks and service marks are the property of their respective owners. © 2009 T-Mobile USA, Inc.

Free Manuals Download Website

<http://myh66.com>

<http://usermanuals.us>

<http://www.somanuals.com>

<http://www.4manuals.cc>

<http://www.manual-lib.com>

<http://www.404manual.com>

<http://www.luxmanual.com>

<http://aubethermostatmanual.com>

Golf course search by state

<http://golfingnear.com>

Email search by domain

<http://emailbydomain.com>

Auto manuals search

<http://auto.somanuals.com>

TV manuals search

<http://tv.somanuals.com>