


Personalize Your Device

- Change the Today screen background**
Tap **Start > Settings > Personal tab > Today**.
- Set the date and time**
Tap **Start > Settings > System tab > Clock & Alarms > Time tab**.
- Manage power settings**
Tap **Start > Settings > System tab > Power > Advanced tab**.



Make a Voice or Video Call

- Press the **TALK** button or **Start > Phone**.
- On the Phone keypad, touch the keys with your finger or tap the keys using the stylus to enter the phone number.
- The Smart Dialing panel will display the matching phone numbers in Call History as well as the matching contacts found on your device and SIM card. Select the number or contact you want to call then press **TALK**. To make a video call, touch/tap  instead of pressing **TALK**.

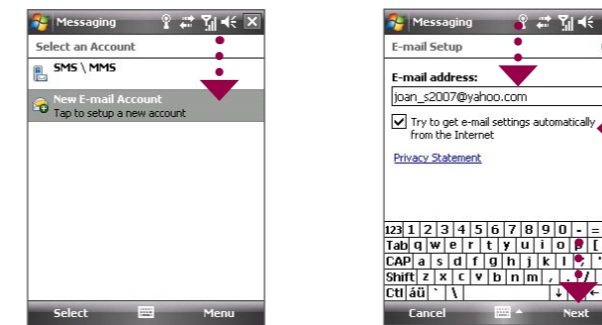


For hands-free phone conversation, connect the USB stereo headset or a Bluetooth® headset (not included) to your device.

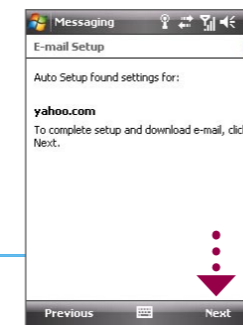
To learn how to connect a Bluetooth headset, refer to the User Manual.

Get E-mail On Your Device

Set up your device so you can send and receive e-mail messages using your favorite e-mail service.

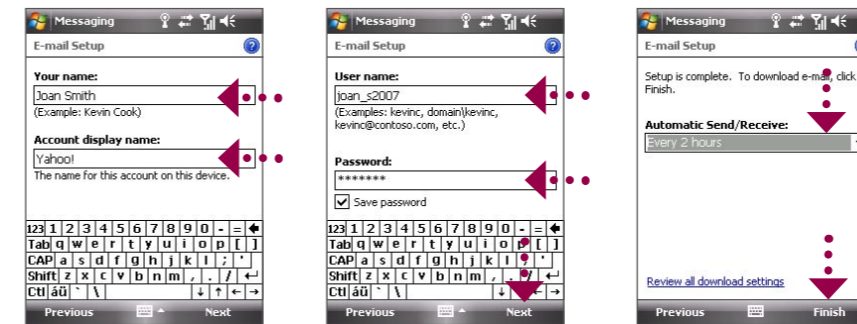


- Tap **Start > Messaging > New E-mail Account**.
- Enter your e-mail address and tap **Next**.



- Auto Setup downloads e-mail server settings automatically to your device. Tap **Next**.

Note If Auto Setup is unsuccessful, you need to manually enter the settings in the succeeding screens.



- Enter **Your Name** and **Account display name**. Tap **Next**.
- Enter your **User name** and **Password** for the e-mail account. Tap **Next**.
- Choose how frequent you want your device to automatically send and receive e-mail. Tap **Finish**.

You can also synchronize your device with your company's Exchange Server so you can access your company e-mail.



Refer to the User Manual to learn how to get your company e-mails on your device.

TOUCH CRUISE Read Me First

This **Read Me First** will help you get started with using your Windows Mobile® 6 powered device. We recommend that you have this guide handy when you start using your device.

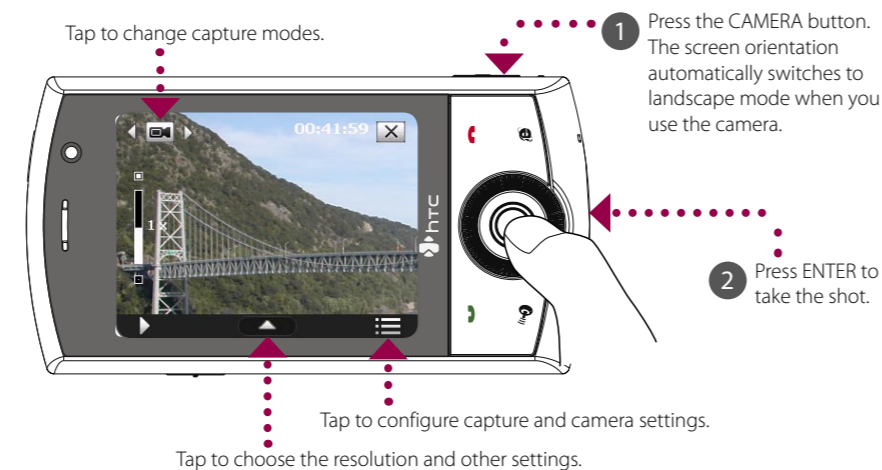
For a more complete reference, consult the User Manual that came with the device.


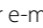
Secure Your Device

- To enable the SIM PIN**
Enabling the SIM PIN requires you to enter a PIN code first before you can use the phone features of your device.
You can enable the SIM PIN by tapping **Start > Settings > Personal tab > Phone** and selecting **Require PIN when phone is used**.
- To enable the device password**
Enabling the device password requires you to enter a password to unlock the device after it has been left idle for a set period of time.
 - Tap **Start > Settings > Personal tab > Lock**.
 - Select the **Prompt if device unused for** check box and enter the time you want.
 - Select the **Password type**.
 - Enter and confirm the password, then tap **OK**.
- To enable the key lock**
Enabling the key lock helps prevent accidental touch screen taps or button presses when the device is in your pocket or bag.
Lock the keys by tapping the **Launcher tab** () on HTC Home and then tapping . To unlock, tap **Unlock**.

Take a Photo

Use the Camera of your device to capture those precious moments.

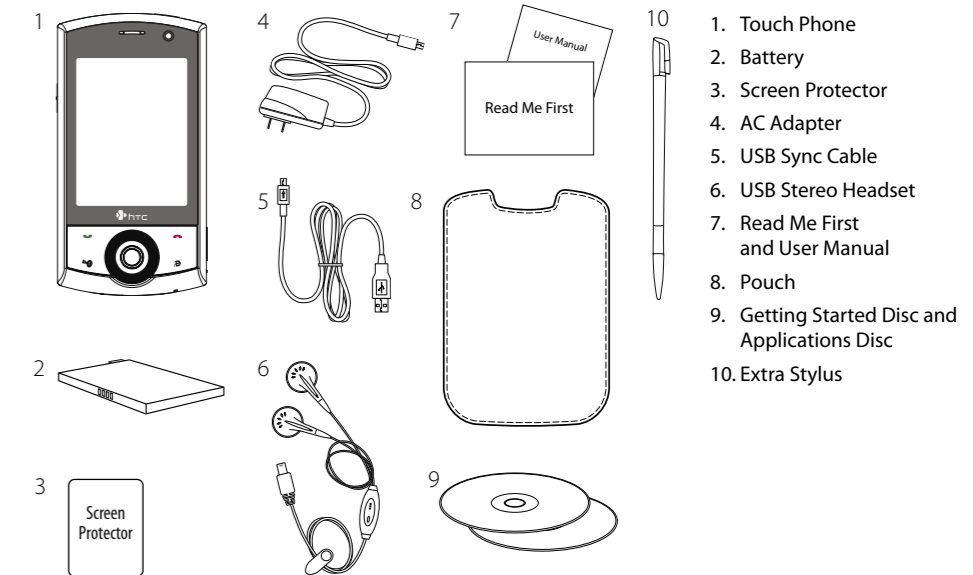


The photo will be saved to the My Pictures folder, unless you choose to delete it by tapping  after taking the photo. Tap  if you want to send the photo via MMS or e-mail.

Refer to the User Manual for more information about using the Camera.

What's in the Box

These are the items that you should find inside the box.

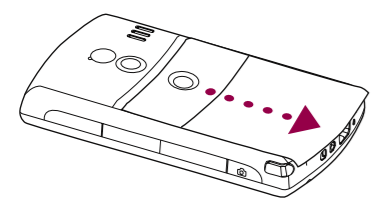


www.htc.com

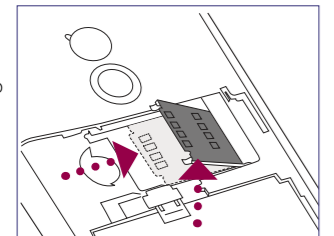


Before Using Your Device

A. Remove the back cover
Ensure that the device is turned off and slide the battery cover off.

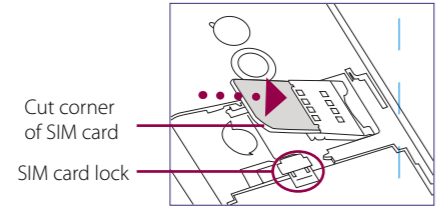


B. Install the SIM Card
1 Push the SIM card holder to the right to unlock it.



2 Flip the SIM card holder up.

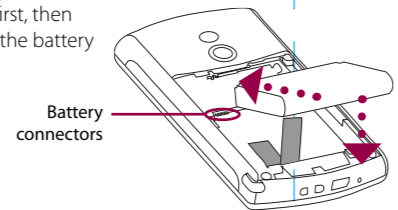
3 Insert the USIM/SIM card with its gold contacts facing down and its cut-off corner facing the battery compartment.



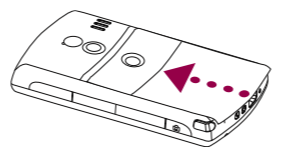
4 Push the SIM card holder down until it snaps into place to lock it. When you insert the battery, the SIM card lock secures the SIM card in place.

C. Install the battery

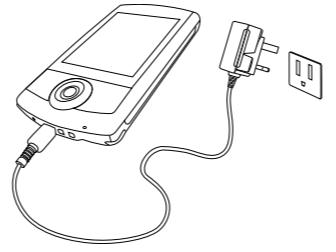
Install the battery by aligning its exposed copper contacts with the battery connectors inside the battery compartment. Insert the contact's side of the battery first, then gently push the battery into place.



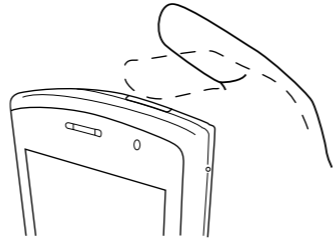
D. Replace the back cover
Slide the back cover into place.



E. Charge the battery
The battery is partially charged out of the box. To charge the battery inside your device, connect the AC adapter plug to an electrical outlet and connect the USB end to the Sync connector at the bottom of your device. The battery is fully charged after about 3 hours of charging.

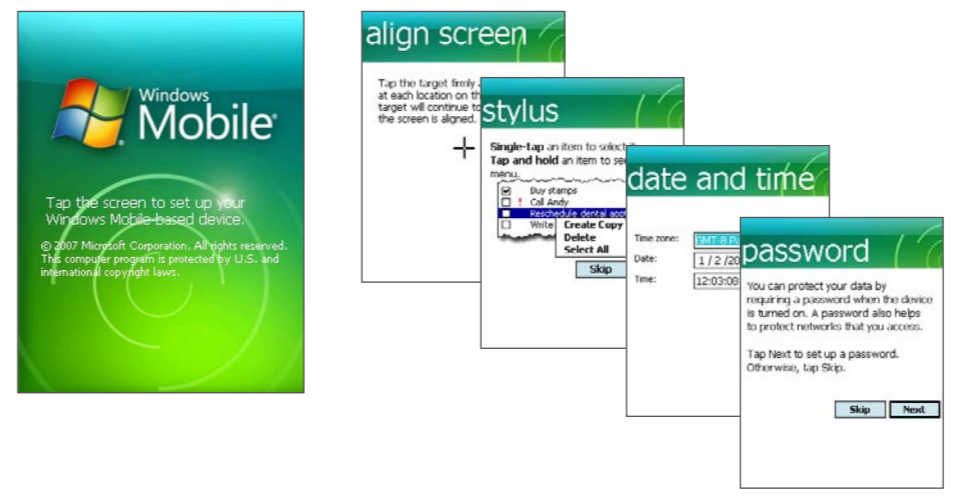


F. Power on/off the device
Press and hold the POWER button for about 3 seconds to power on/off your device. When powering off, a confirmation message will appear. Tap **Yes** to power off the device.



Quick Setup Wizard

When you power on your device for the first time, a Quick Start Wizard will guide you through touch screen calibration, provide a quick tutorial on stylus operation and pop-up menus, and allow you to set the date, time, and a device password. Follow the on-screen instructions to complete the wizard.



Synchronize Your Device and Computer

Synchronize your device with your computer to keep information such as Outlook e-mails, contacts, tasks, and appointments up-to-date on your device.

Set up synchronization software on your computer
Depending on the operating system of your computer, you will need either Microsoft ActiveSync® 4.5 (or later) or Windows Mobile® Device Center to synchronize your device with your computer.

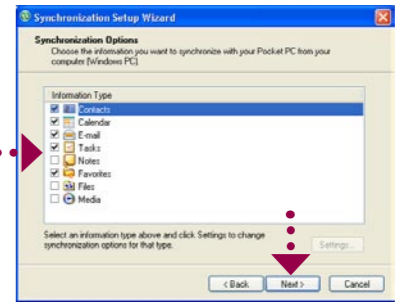
Set up ActiveSync on Windows® XP

1 Install ActiveSync 4.5 on your computer from the Getting Started Disc.



2 Connect your device to your computer. The Synchronization Setup Wizard automatically starts and guides you to create a synchronization partnership. Click **Next** to proceed.

3 To synchronize your device with your computer, clear the **Synchronize directly with a server running Microsoft Exchange** check box and click **Next**.



4 Select the information types that you want to synchronize, then click **Next**.

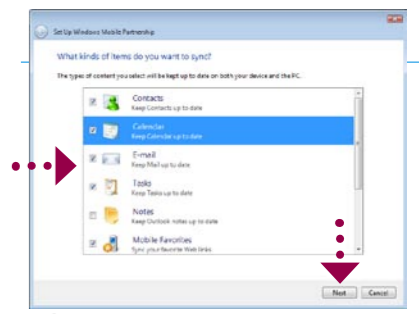
5 Choose whether to allow wireless connections while your device is connected to the computer.

6 Click **Finish**.

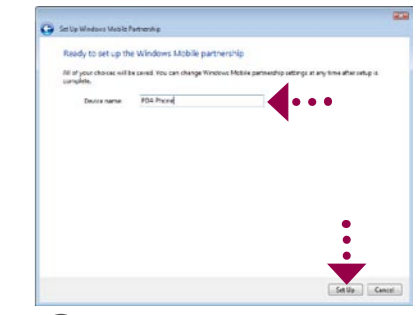
Set up Windows Mobile Device Center on Windows Vista®



1 Connect your device to your computer. In Windows Mobile Device Center, click **Set up your device**.

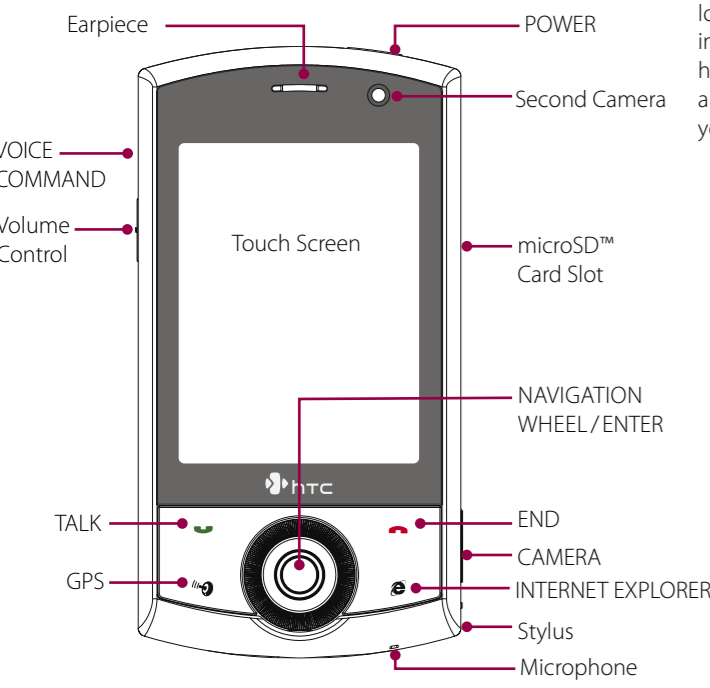


2 Select the information you want to synchronize and click **Next**.



3 Type a name for your device and click **Set Up**.

The Touch Phone



HTC Home™

HTC Home™ is a Today screen plug-in that gives you up-to-date local information at a glance, such as time, date, and weather information, and shows new messages and missed calls. It also has a customizable launcher where you can add your favorite applications for one-touch access and a Profile selector where you can quickly change the profile or ring tone of your device.



TouchFLO™

TouchFLO™ gives you better touch panel experience on your device. Using TouchFLO, you can easily scroll and pan the screen by sliding your finger on the touch panel. TouchFLO also has the Touch Cube where you can add your favorite contacts, access media, launch programs, and more.

Finger scrolling
While on a Web page, document, or list (such as contacts list, file list, etc.), slide your finger upward to scroll down or slide your finger downward to scroll up. To scroll to the right, slide your finger to the left. To scroll to the left, slide your finger to the right.

Finger panning
Touch and hold on the touch screen and then drag your finger around the screen.

Touch Cube
To open the Touch Cube, slide your finger upward, starting from the bottom of the touch screen where it shows a logo image. To close the Touch Cube, slide your finger downward.

Touch Cube is a three-dimensional, cubic user interface. To flip the interface from one side to another, slide your finger left or right on the touch screen.



Go Online and Surf the Web

Go online by turning on Wi-Fi® on your device.

Note If there is no Wi-Fi hotspot in your area, you can still connect to the Internet by using the 3G/GPRS or dial-up service of your wireless service provider. Refer to the User Manual to learn how to connect using 3G/GPRS or dial up.



1 Tap **Start > Programs > Comm Manager** and tap **Wi-Fi**.
2 Select the wireless network you want to connect to and tap **OK**.
3 Select **The Internet** and tap **Connect**.

Note If you are connecting to a secured wireless network, you may need to enter a **Key** for that network connection before you can connect to it.

When connected, launch Internet Explorer® Mobile (tap **Start > Internet Explorer**) to surf the Web.

Free Manuals Download Website

<http://myh66.com>

<http://usermanuals.us>

<http://www.somanuals.com>

<http://www.4manuals.cc>

<http://www.manual-lib.com>

<http://www.404manual.com>

<http://www.luxmanual.com>

<http://aubethermostatmanual.com>

Golf course search by state

<http://golfingnear.com>

Email search by domain

<http://emailbydomain.com>

Auto manuals search

<http://auto.somanuals.com>

TV manuals search

<http://tv.somanuals.com>