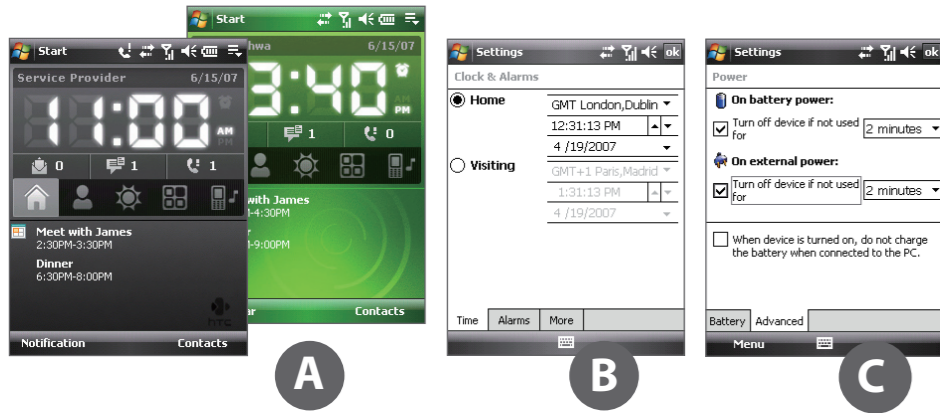


Personalize Your PDA Phone

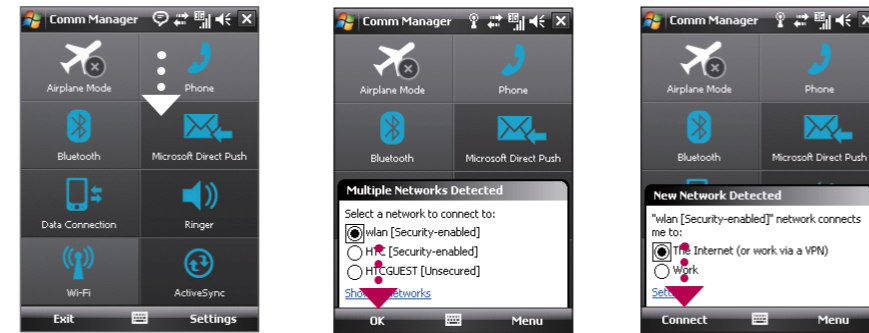
- Change the Today screen
Tap **Start > Settings > Personal** tab > **Today**.
- Set the date and time
Tap **Start > Settings > System** tab > **Clock & Alarm > Time** tab.
- Manage power settings
Tap **Start > Settings > System** tab > **Power > Advanced** tab.



Go Online and Surf the Web

Go online by turning on Wi-Fi® on your device.

Note If there is no Wi-Fi hotspot in your area, you can still connect to the Internet by using the GPRS/3G or dial-up service of your wireless service provider. Refer to the User Manual to learn how to connect using GPRS/3G or dial up.



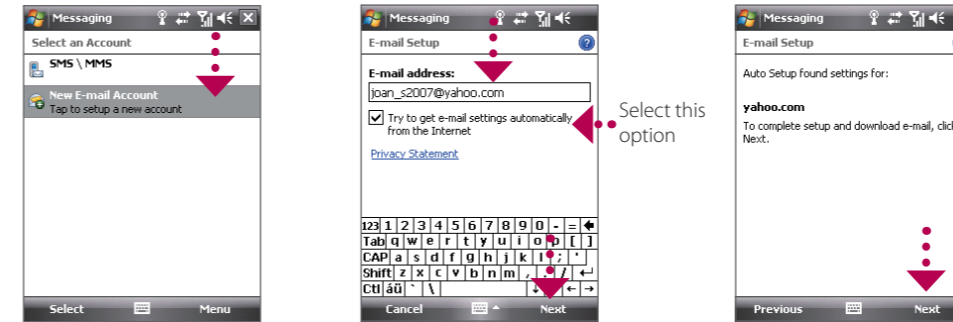
- Tap **Start > Programs > Comm Manager** and tap the **Wi-Fi** button.
- Select the wireless network you want to connect to and tap **OK**.
- Select **The Internet** and tap **Connect**.

Note If you are connecting to a secured wireless network, you may need to enter a **Key** for that network connection before you can connect to it.

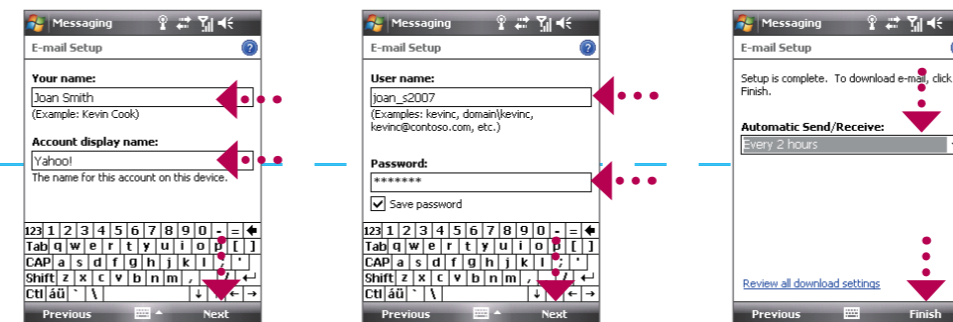
Use Internet Explorer® Mobile (tap **Start > Internet Explorer**) to surf the Web.

Get E-mail Using Your PDA Phone

Get your e-mail on your device. Set up your device so you can send and receive e-mails using your favorite e-mail service.



- Tap **Start > Messaging > New E-mail Account**.
- Type in your **E-mail address** and tap **Next**.
- Tap **Next**. If unsuccessful, you need to manually enter the settings in the succeeding screens.



- Type in **Your Name** and **Account display name**. Tap **Next**.
- Type in the **User name** and **Password** for the e-mail account. Tap **Next**.
- Select the frequency to send and receive e-mail. Tap **Finish**.

You can synchronize your device with your company's Microsoft Exchange server so you get your company e-mails on your device.

Refer to the user manual to learn how to get your company e-mails on your device.

This **Read Me First** will help you get started with using your Windows Mobile® 6 powered device. We recommend that you have this guide handy when you start using your device. For a more complete reference, consult the User Manual that came with the device.

Secure Your PDA Phone

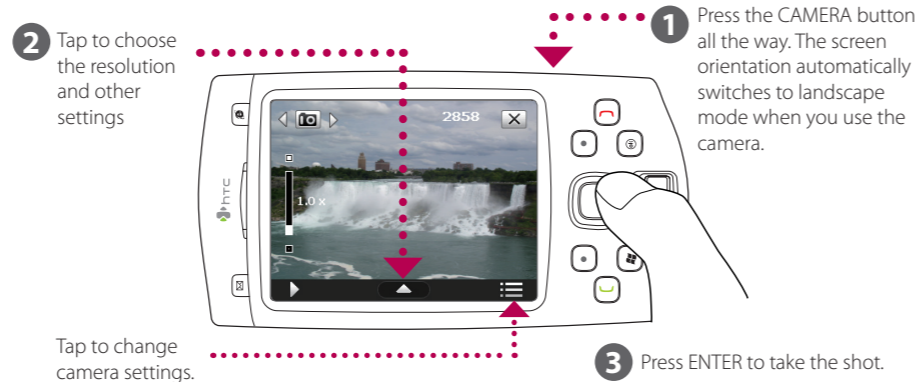
Protect your device from unauthorized access by enabling the SIM PIN and/or Device lock.

- To enable SIM PIN**
Enabling the SIM PIN requires you to enter a password first before you can use the phone features of the device.
Tap **Start > Settings > Personal** tab > **Phone** and select **Require PIN when phone is used**.
- To enable device lock**
Enabling the device lock requires you to enter a password to unlock the device after it has been left idle for a set period of time.
 - Tap **Start > Settings > System** tab > **Lock**.
 - Select the **Prompt if device unused for** check box and enter the time you want.
 - Select the **Password** type.
 - Enter and confirm the password, then tap **OK**.
- To enable key lock**
Enabling key lock helps prevent accidental key presses when the device is in your pocket or bag.
Lock the keys by tapping the **Launcher** tab () on HTC Home and then tapping .
To unlock, tap **Unlock**.
You can also protect the device and personal data with the fingerprint recognition software pre-installed on your device. Refer to the User Manual for more information about its use.

Take a Picture

Take out your device and capture those precious moments.

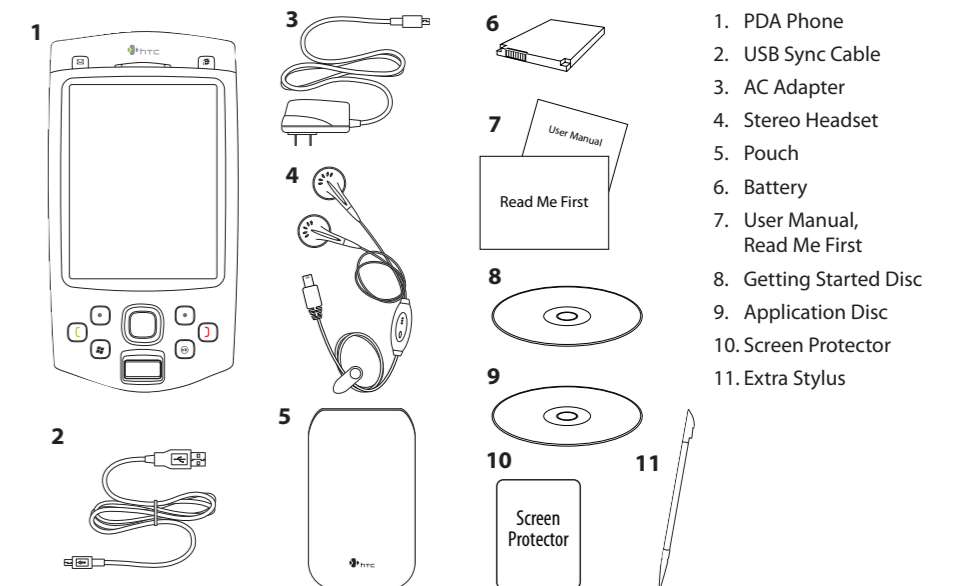
The photo will be saved to the My Pictures folder, unless you choose to delete it (by tapping after taking it) on the Review screen. Press to send the photo via MMS or e-mail. Refer to the User Manual to learn more about the Camera.



The camera comes with an auto-focus function to let you capture sharp and crisp photos and videos of your subjects. Depending on the option you have chosen in **Shoot Option**, you will need to press the CAMERA button either half-way or all the way to take a photo.

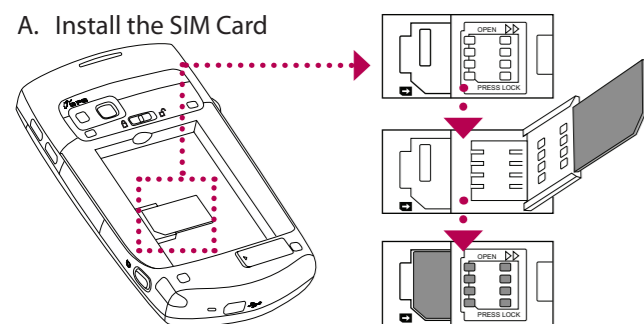
What's in the Box

These are the items that you should find inside the box.



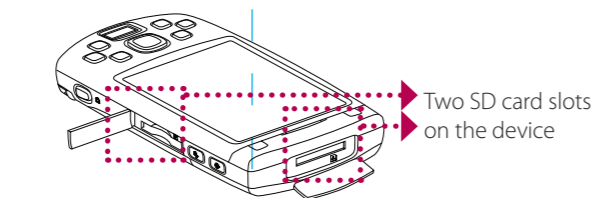
▶ Before You Turn On ...

A. Install the SIM Card



- Slide and hold the back cover latch to the unlock position (🔒) to release and remove the back cover.
- If you have installed the battery, remove it by lifting it up from its top end.
- Press and slide the SIM card holder towards right to unlock and lift it open.
- Insert the SIM card into the holder with its gold contacts facing down and its cut-off corner facing toward outside of the slot.
- Move the SIM card holder down, and then press gently to close and lock it in place.

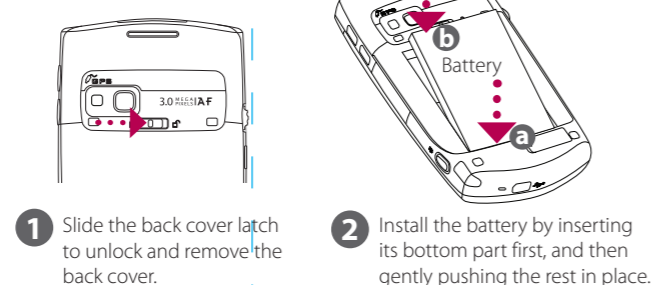
B. Install an SD™ card (not included in box)



Peel open the rubber that covers the storage card slot and insert the SD card into the slot with its gold contacts facing down.

To remove the SD card, press it to eject it from the slot.

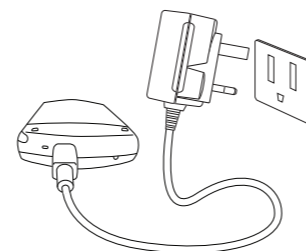
C. Install the battery



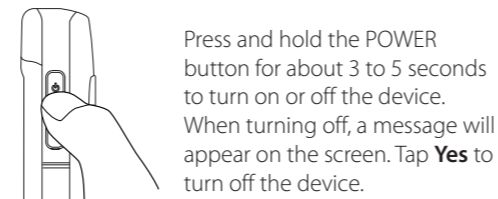
- Slide the back cover latch to unlock and remove the back cover.
- Install the battery by inserting its bottom part first, and then gently pushing the rest in place.

D. Charge the battery

The battery is not fully charged out of the box. Charge the battery by plugging the AC adapter plug to an electrical outlet and plugging the USB end to the sync connector port at the bottom of the device. The battery is fully charged after about 3 hours of charging.



E. Turn on/off the device

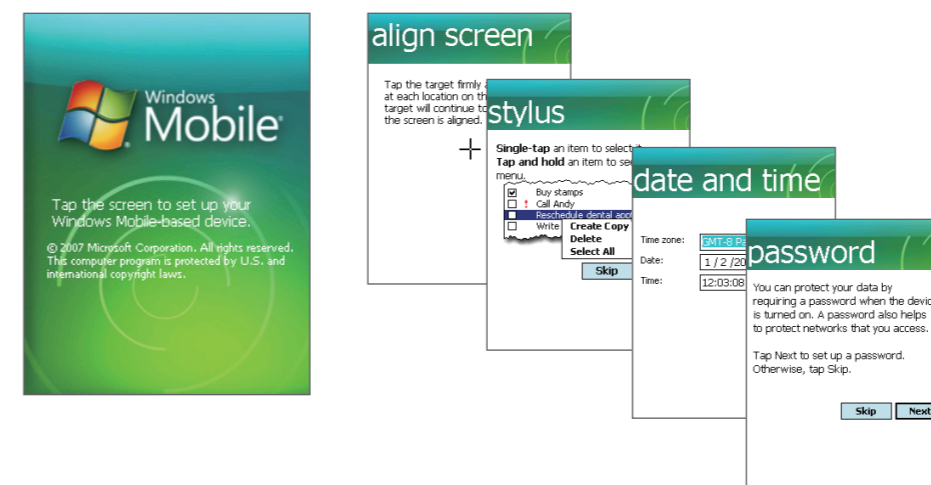


Press and hold the POWER button for about 3 to 5 seconds to turn on or off the device. When turning off, a message will appear on the screen. Tap **Yes** to turn off the device.

👤 Quick Setup Wizard

When you power on your device for the first time, a Quick Setup Wizard will guide you through touch screen calibration, provide a quick tutorial on stylus operation and pop-up menus, and allow you to set the date, time and a device password.

Follow the on-screen instructions to complete the wizard.



🔄 Synchronize Your PDA Phone and PC

Synchronize your PC with your device to keep information such as contacts, tasks, and appointments up-to-date on your device.

Set up synchronization software on your PC

Depending on the Operating System (OS) of your PC, you will need either Microsoft ActiveSync® 4.5 (or later) or Windows Mobile® Device Center to synchronize your device with your PC.

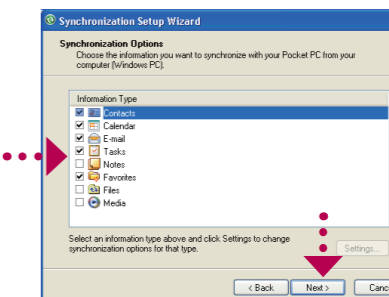
Set up ActiveSync on Windows XP®

- Install ActiveSync 4.5 on your PC from the Getting Started Disc.



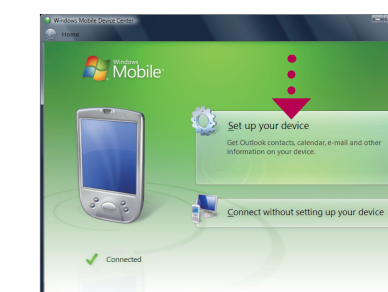
- Connect your device to your PC. The Synchronization Setup Wizard automatically starts and guides you to create a synchronization partnership. Click **Next** to proceed.

- To synchronize your device with your PC, clear the **Synchronize directly with a server running Microsoft Exchange** check box and click **Next**.

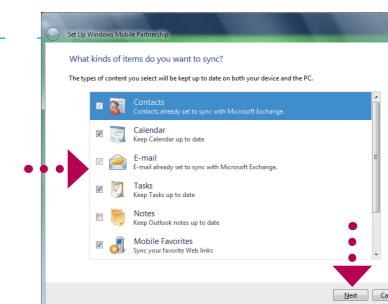


- Select the information types that you want to synchronize, then click **Next**.
- Click **Finish**.

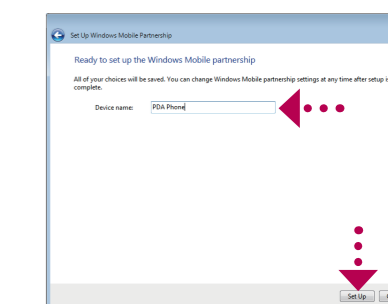
Set up Windows Mobile Device Center on Windows Vista®



- Connect your device to your PC. Windows Mobile Device Center will open. On the screen, click **Set up your device**.

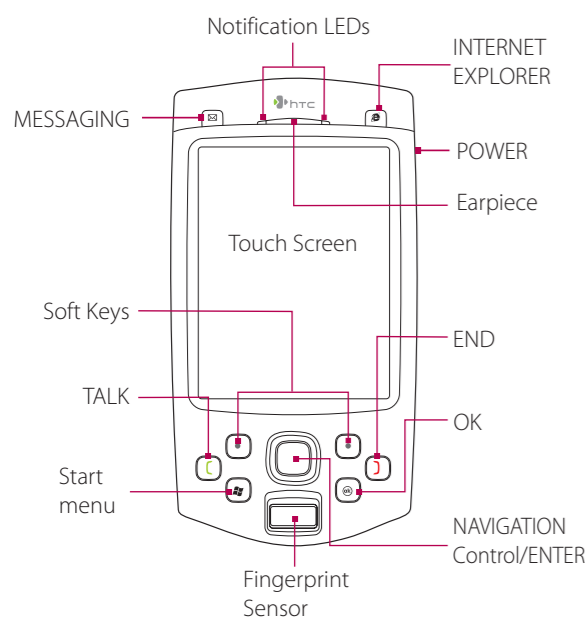


- Select the information you want to synchronize and click **Next**.



- Type in a name for your PDA phone and click **Set Up**.

The PDA Phone



HTC Home

HTC Home™ is a Today screen plug-in that gives you up-to-date local information at a glance, such as time, day and weather information, and shows new messages and missed calls.

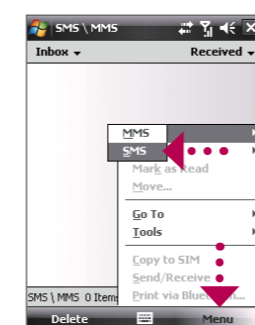
HTC Home also has three other tabs that let you quickly access your frequently-called contacts, often-used or accessed programs or device settings, and sound settings.



✉ Send a Text Message

Send out short text messages to another mobile phone.

- Tap **Start > Messaging > SMS \ MMS**.



- Tap **Menu > New > SMS**.



- Enter the mobile phone number* in **To** and then write your message. Tap **Send**.

* You can also tap **To** to choose a contact from your SIM card or Contacts list.

☎ Make that First Call

- Press the TALK button to open the Phone screen.
- Tap the keys on the Phone screen to enter the first few digits of a phone number or the beginning letters of a contact name.
- The Smart Dialing panel will display the matching phone numbers in Call History as well as the matching contacts found on your device and SIM card. Select the number or contact you want to call then press TALK.

For hands-free operation, connect your device with the wired headset or Bluetooth® headset (not included) to your device.

To learn how to connect a Bluetooth headset to your device, refer to the User Manual.



Free Manuals Download Website

<http://myh66.com>

<http://usermanuals.us>

<http://www.somanuals.com>

<http://www.4manuals.cc>

<http://www.manual-lib.com>

<http://www.404manual.com>

<http://www.luxmanual.com>

<http://aubethermostatmanual.com>

Golf course search by state

<http://golfingnear.com>

Email search by domain

<http://emailbydomain.com>

Auto manuals search

<http://auto.somanuals.com>

TV manuals search

<http://tv.somanuals.com>