

Copyright © Huawei Technologies Co., Ltd. 2009.

All rights reserved

No part of this document may be reproduced or transmitted in any form or by any means without prior written consent of Huawei Technologies Co., Ltd.

The product described in this manual may include copyrighted software of Huawei Technologies Co., Ltd and possible licensors. Customers shall not in any manner reproduce, distribute, modify, decompile, disassemble, decrypt, extract, reverse engineer, lease, assign, or sublicense the said software, unless such restrictions are prohibited by applicable laws or such actions are approved by respective copyright holders under licenses.

Trademarks and Permissions



HUAWEI, HUAWEI, and



are trademarks or registered trademarks of Huawei Technologies Co., Ltd.

Other trademarks, product, service and company names mentioned are the property of their respective owners.

Notice

Some features of the product and its accessories described herein rely on the software installed, capacities and settings of local network, and may not be activated or may be limited by local network operators or network service providers, thus the descriptions herein may not exactly match the product or its accessories you purchase.

Huawei Technologies Co., Ltd reserves the right to change or modify any information or specifications contained in this manual without prior notice or obligation.

NO WARRANTY

THE CONTENTS OF THIS MANUAL ARE PROVIDED "AS IS". EXCEPT AS REQUIRED BY APPLICABLE LAWS, NO WARRANTIES OF ANY KIND, EITHER EXPRESS OR IMPLIED, INCLUDING BUT NOT LIMITED TO, THE IMPLIED WARRANTIES OF MERCHANTABILITY AND FITNESS FOR A PARTICULAR PURPOSE, ARE MADE IN RELATION TO THE ACCURACY, RELIABILITY OR CONTENTS OF THIS MANUAL.

TO THE MAXIMUM EXTENT PERMITTED BY APPLICABLE LAW, IN NO CASE SHALL HUAWEI TECHNOLOGIES CO., LTD BE LIABLE FOR ANY SPECIAL, INCIDENTAL, INDIRECT, OR CONSEQUENTIAL DAMAGES, OR LOST PROFITS, BUSINESS, REVENUE, DATA, GOODWILL OR ANTICIPATED SAVINGS.

Import and Export Regulations

Customers shall comply with all applicable export or import laws and regulations and will obtain all necessary governmental permits and licenses in order to export, re-export or import the product mentioned in this manual including the software and technical data therein.

Table of Contents

| | |
|---------------------------------|---|
| Getting to Know the E1762 | 1 |
| Requirements for the PC | 3 |
| Preparing the E1762..... | 3 |
| Installation Guide..... | 5 |
| Safety Information | 8 |

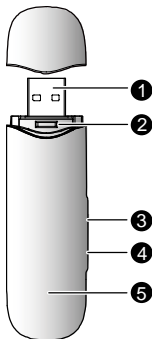
Thank you for purchasing Huawei E1762 HSPA USB Stick.

Note:

- n This manual briefly describes the preparation, the process for installing/uninstalling, and safety precautions for using Huawei E1762 HSPA USB Stick (hereinafter referred to as the E1762).
- n You are recommended to read the manual before using the E1762.

Getting to Know the E1762

The following figures show the appearance of the E1762. The actual product may differ.



Ⓜ USB Interface

Connects to the USB interface of the PC.

- **USIM/SIM card slot**

Holds the USIM/SIM card.

- **Ž Micro SD card slot**

Holds the Micro SD card.

- **External Antenna Jack**

Connects to an external antenna.

- **Indicator**

Indicates the status of the E1762.

- n Green, blinking twice every 3s: The E1762 is powered on.
- n Green, blinking once every 3s: The E1762 is registered to the GSM/GPRS/EDGE network.
- n Blue, blinking once every 3s: The E1762 is registered to the WCDMA/HSDPA/HSUPA network.
- n Green, always on: The GPRS/EDGE connection is set up.
- n Blue, always on: The WCDMA connection is set up.
- n Cyan, always on: The HSDPA/HSUPA connection is set up.
- n Off: The E1762 is removed from the PC.

Requirements for the PC

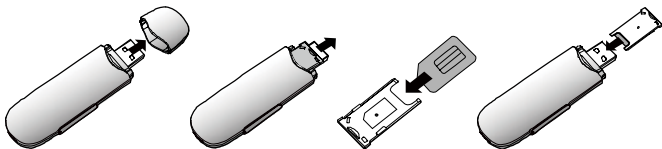
To use the E1762, the PC must meet the following requirements:

- n Standard USB interface.
- n Windows 2000 SP4, Windows XP SP2, Windows Vista.
- n The hardware of your PC must meet or exceed the recommended system requirements for the installed version of OS.
- n Display resolution: 800 × 600 or above.

Preparing the E1762

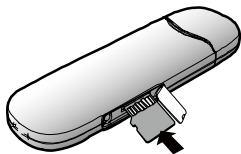
Inserting the USIM/SIM Card

Insert the USIM/SIM card into the card slots. Make sure that the cards are properly inserted.



Inserting the Micro SD Card

Insert the Micro SD card into the E1762, as shown in the following figure.



Note:

- n Micro SD card is an optional accessory.
- n Do not remove the USIM/SIM card and the Micro SD card when they are being used. Removing the cards during an operation may damage the cards as well as the device, and data stored on the cards may be corrupted.

Installation Guide

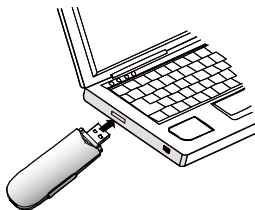
The procedure for installing the management program depends on the operating system installed on your PC. The following section takes Windows XP as an example.

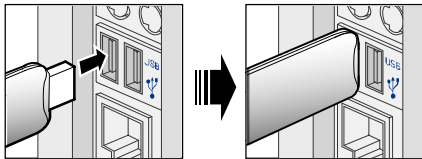
Connecting the E1762 with a PC

Note:

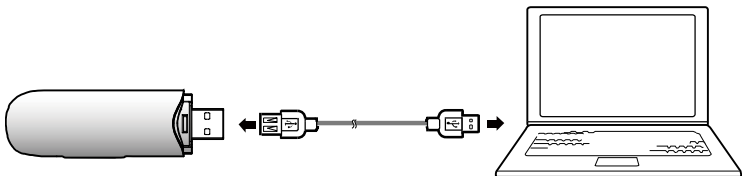
Power on your PC before connecting the E1762 with the PC. Otherwise, the normal installation of the E1762 may be affected.

One way: Plug the E1762 into the USB interface of the PC.





The other way: connect the E1762 to a PC using the USB extension cable.



Installing the E1762 Management Program

1. Connect the E1762 with the PC.
2. The OS automatically detects and recognises new hardware and starts the installation wizard

Note:

If the auto-run program does not respond, find the **AutoRun.exe** file in the driver path. Then double-click **AutoRun.exe** to run the program.

3. Follow the prompts of the installation wizard.
4. After the program is installed, the shortcut icon of the management program is displayed on the desktop.

Launching the Management Program

After the E1762 is installed, the management program is launched automatically. Then every time the E1762 is connected to the PC, the management program is launched automatically.

You can also double-click the shortcut icon on the desktop to launch the management program.


Uninstalling the Management Program

1. Choose **Start > Control Panel**.
2. Find the management program, and click **Add/Remove Program** to uninstall the management program.

Note:

It is recommended to restart the PC after the uninstallation to ensure that the management program is completely uninstalled.

Removing the E1762

1. Double-click  in the system tray. The Unplug or Eject Hardware interface is displayed.
2. Select the hardware related to the E1762 and click **Stop**.
3. When the prompt **"It is safe to remove the device"** is displayed, remove the E1762.

Note:

Before removing the E1762, exit the management program.

Safety Information

Read the safety information carefully to ensure the correct and safe use of your wireless device.

Interference

Do not use your wireless device where using the device is prohibited or when it causes danger or interference with electric devices.

Medical Device

- n When using your wireless device; follow the rules and regulations set forth by the hospitals and health care facilities.
- n Some wireless devices may affect the performance of hearing aids.
- n If you are using an electronic medical device, consult your doctor or medical device manufacturer to confirm whether the radio wave affects the operation of this device.

Area with Inflammables and Explosives

Do not use your wireless device and observe the rules when inflammable and explosive devices are present. Areas stored with inflammables and explosives include but are not limited to the following:

- n Petrol station.
- n Fuel depot (such as the bunk below the deck of a ship).
- n Container/Vehicle for storing or transporting fuels or chemical products.
- n Area where the air contains chemical substances and particles (such as granule, dust, or metal powder).

- n Area indicated with the "Explosives" sign.
- n Areas where wireless devices are not permitted.

Traffic Security

- n Observe local laws and regulations while using the wireless device. To prevent accidents, do not use your wireless device while driving.
- n RF signals may affect electronic systems of motor vehicles. For more information, consult the vehicle manufacturer.
- n In a motor vehicle, do not place the wireless device over the air bag or in the air bag deployment area.
- n Observe the rules and regulations of airline companies. When boarding, switch off your wireless device. Otherwise, the radio signal of the wireless device may interfere with the plane control signals.

Safety of Children

Do not allow children to use the wireless device without guidance. Small and sharp components of the wireless device may cause danger to children or cause suffocation if children swallow the components.

Environment Protection

Observe the local regulations regarding the disposal of your packaging materials, used wireless device and accessories, and promote their recycling.

WEEE Approval

The wireless device is in compliance with the essential requirements and other relevant provisions of the Waste Electrical and Electronic Equipment Directive 2002/96/EC (WEEE Directive).

RoHS Approval

The wireless device is in compliance with the restriction of the use of certain hazardous substances in electrical and electronic equipment Directive 2002/95/EC (RoHS Directive).

Laws and Regulations Observance

Observe laws and regulations when using your wireless device. Respect the privacy and legal rights of others.

Care and Maintenance

It is normal that your wireless device gets hot when you use it. Before you clean or maintain the wireless device, stop all applications and disconnect the wireless device from your PC.

- n Use your wireless device and accessories with care and in a clean environment. Keep the wireless device from a fire or a lit cigarette.
- n Protect your wireless device and accessories from water, vapor and keep them dry.
- n Do not drop, throw or bend your wireless device.
- n Clean your wireless device with a piece of damp and soft antistatic cloth. Do not use any chemical agents (such as alcohol and benzene), chemical detergent, or powder to clean it.
- n Do not leave your wireless device and accessories in a place with a considerably low or high temperature.

- n Use only accessories of the wireless device approved by the manufacturer. Contact the authorized service center for any abnormality of the wireless device or accessories.
- n Do not dismantle the wireless device or accessories. Otherwise, the wireless device and accessories are not covered by the warranty.

Emergency Call

This wireless device functions through receiving and transmitting radio signals. Therefore, the connection cannot be guaranteed in all conditions. In an emergency, you should not rely solely on the wireless device for essential communications.

Specific Absorption Rate (SAR)

Your wireless device is a radio transmitter and receiver. It is designed not to exceed the limits for exposure to radio waves recommended by international guidelines. These guidelines were developed by the independent scientific organization ICNIRP and include safety margins designed to assure the protection of all persons, regardless of age and health.

The guidelines use a unit of measurement known as the Specific Absorption Rate, or SAR. The SAR limit for wireless devices is 2.0 W/kg and the highest SAR value for this device when tested complied with this limit.

Body Worn Operation

Important safety information regarding radio frequency radiation (RF) exposure.

To ensure compliance with RF exposure guidelines the device must be used with a minimum of 1.5cm separation from the body.

Failure to observe these instructions could result in your RF exposure exceeding the relevant guideline limits.

Regulatory Information

The following approvals and notices apply in specific regions as noted.

CE Approval (European Union)


The wireless device is approved to be used in the member states of the EU. The wireless device is in compliance with the essential requirements and other relevant provisions of the Radio and Telecommunications Terminal Equipment Directive 1999/5/EC (R&TTE Directive).

* This device should be installed and operated with a minimum distance of 20cm between the radiator and your body when using it via USB cable.

FCC Statement

This device complies with Part 15 of the FCC Rules. Operation is subject to the following two conditions: (1) this device may not cause harmful interference, and (2) this device must accept any interference received, including interference that may cause undesired operation.

Australian Compliance

This wireless device is manufactured in accordance with the Australian Communications and Media Authority (ACMA)  compliance.

Version: V100R001_01 Part Number: 3101****

Free Manuals Download Website

<http://myh66.com>

<http://usermanuals.us>

<http://www.somanuals.com>

<http://www.4manuals.cc>

<http://www.manual-lib.com>

<http://www.404manual.com>

<http://www.luxmanual.com>

<http://aubethermostatmanual.com>

Golf course search by state

<http://golfingnear.com>

Email search by domain

<http://emailbydomain.com>

Auto manuals search

<http://auto.somanuals.com>

TV manuals search

<http://tv.somanuals.com>